

SWIMMING POOL
WATERPROOFING
SOLUTIONS

SOPREMAPOOL



SOPREMAPOOL

SUMMARY

SOPREMA.....	3
PRESENTATION	4
SOPREMAPOOL 3D.....	6
SOPREMAPOOL DESIGN.....	8
SOPREMAPOOL PREMIUM.....	10
SOPREMAPOOL ONE.....	12
COMPLEMENTS & ACCESSORIES.....	14





An independent family group since 1908, **SOPREMA** has established itself as one of the world's leading waterproofing companies and also as a specialist in roofing, sound sublayers and insulation. Over the years, the **SOPREMA** Group has grown and diversified around the world, integrating complementary activities into its original business: waterproofing.

With a workforce of more than 8,400 people and a turnover of more than 3 billion euros, **SOPREMA** has a global commercial industrial presence with 73 factories, more than 90 operating subsidiaries and a presence in 90 countries, as well as 18 highly focused sustainable development R&D centres and 22 training centres in 8 countries.

As a result of a close collaboration between the marketing and the R&D departments, the **SOPREMA** products range is innovative and in perfect harmony with market requirements and current standards. **SOPREMA**'s success is built on a basic principle: to focus on the idea.

SOPREMA's products and services aim to meet the most demanding needs of building professionals, in terms of waterproofing reinforced PVC membranes for swimming pools, waterproofing of roof terraces, civil engineering works, insulation, roofing, natural lighting, green and photovoltaic roofs.

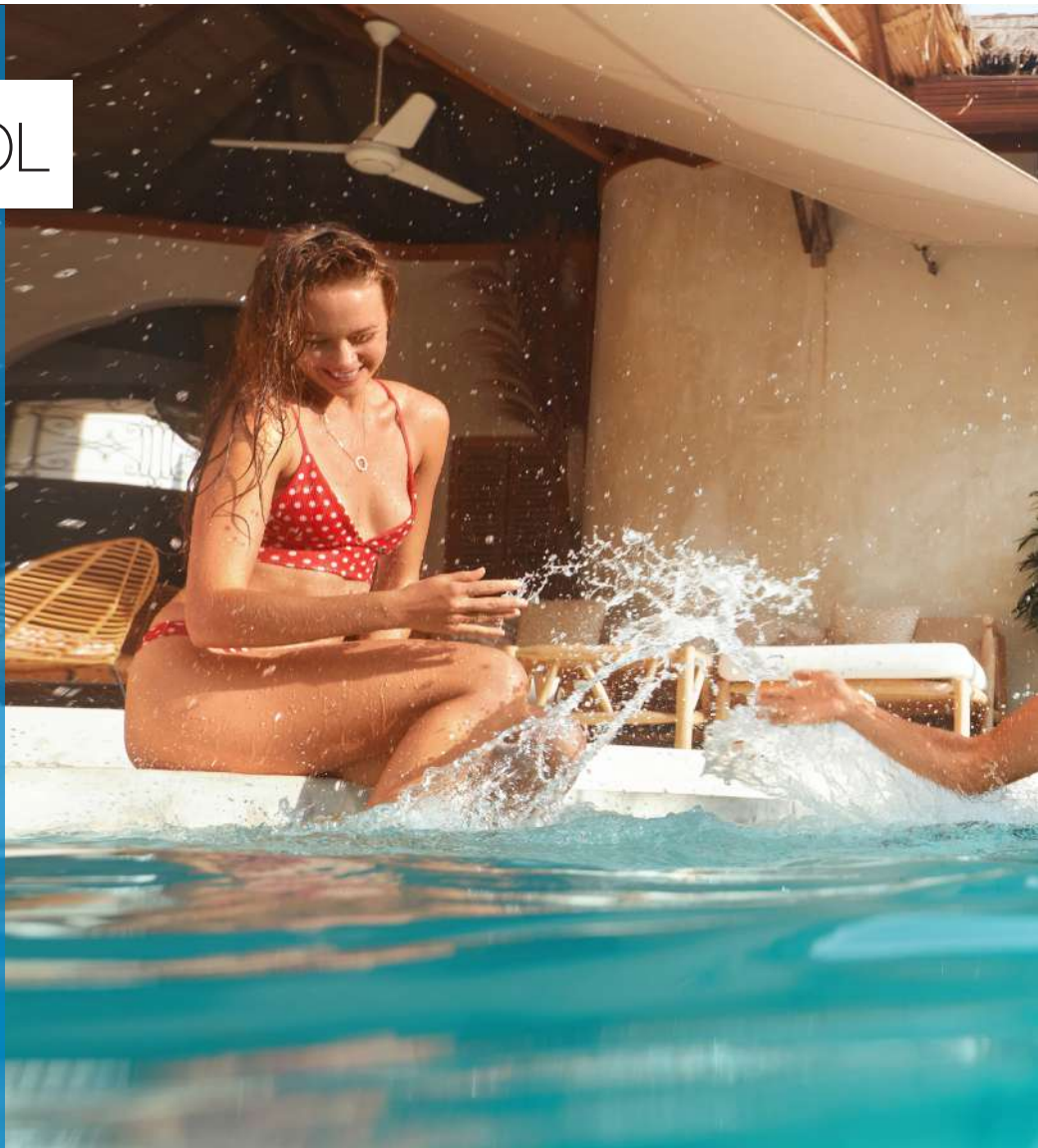
SOPREMA offers original, high-performance and high-tech solutions that address all building problems. Constantly optimized by the research and development services in a logic ecodesign, **SOPREMA** systems today display exceptional performance in terms of strength, reliability and longevity.

At **SOPREMA** we are very committed to sustainability and we work towards a sustainable construction model focusing on 2 main points: manufacturing energy efficient products and adopting a closed, circular life cycle construction model that allows the reuse of construction waste. It is necessary to promote a renewed vision of construction with more responsible and respectful practices with the environment.

All **SOPREMA** plants are ISO 9001 certified. In addition, some also are ISO 14001, ISO 16001 and ISO 18001.

SOPREMAPOOL

SOPREMA, world leader in waterproofing solutions, offers a wide range of reinforced synthetic membranes and other complementary products for the installation and maintenance of the swimming pool under the name **SOPREMAPOOL**.



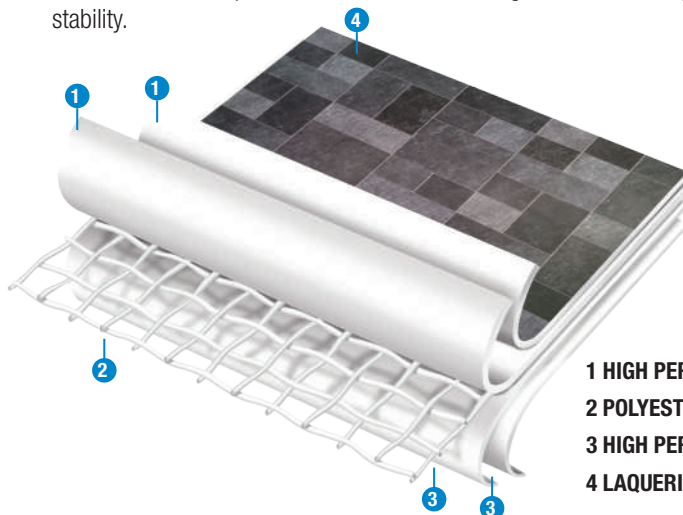
REINFORCED MEMBRANES

4 LAYERS MEMBRANE

Reinforced synthetic membranes manufactured by impregnation with high quality raw materials (resins, plasticizers, stabilizers and pigments).

Composed of 4 layers with different and complementary formulations, introducing a polyester reinforcement between the second and third layers.

This reinforcement provides the membrane with great tensile strength and high dimensional stability.



- 1 HIGH PERFORMANCE PVC: LAYERS 1 & 2**
- 2 POLYESTER REINFORCEMENT**
- 3 HIGH PERFORMANCE PVC: LAYERS 3 & 4**
- 4 LAQUERING FINISHING***

*EXCEPT SOPREMAPOOL ONE

THE +

- Varnish impregnation in all 4 layers
- Optimal welding
- U.V. ray resistance
- Resistance against microorganisms with "Bio Shield" treatment
- Resistance against punching
- High mechanical resistance
- Resistance against standard chemicals for water treatment in swimming pools covered with PVC liner



NEW FORMULATION

Our laboratories have improved its formulation by integrating an exclusive varnish in the 4 layers for the entire SOPREMAPOOL range, thus achieving greater durability and resistance to:

- Color
- Chlorine
- Stains
- Microorganisms

BIO-SHIELD » TREATMENT

Its formulation with "BIO-SHIELD" treatment guarantees total resistance to the formation of microorganisms and prevents any molecular change.

GUARANTEE

GUARANTEE
12 years
WATERPROOFING



GUARANTEE
3 years
STAINS

SOPREMAPOOL
3D + DESIGN + PREMIUM

GUARANTEE
10 years
WATERPROOFING

SOPREMAPOOL
ONE



SENSITIVE BALI

6

THE +

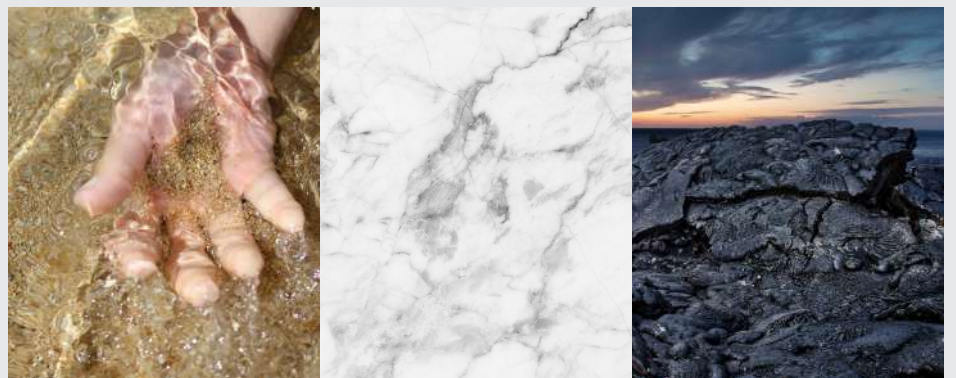
- Attractive and aesthetic
- Easy and quick installation
- Sensory experience
- Varnish impregnation in all 4 layers
- Varnish coating
- Exclusive designs
- Multiple designs

SOPREMAPOOL 3D

180/100 AND 150/100 REINFORCED MEMBRANE

PVC reinforced membrane of 1.8 mm and 1.5 mm with varnish impregnation in all 4 layers and varnished coating for superior protection against UV rays, microorganisms and chlorine.

The 3D range replicates the feeling and the aesthetic aspects of mosaics and natural materials.



The relief motifs, of great aesthetic appeal, are a plus to the characteristic advantages of reinforced PVC cladding: a simple and quick installation and a great protective and waterproofing capacity.

The thickness of the Sensitive membranes is 1.8 mm and 1.5 mm for all Spirit Ceram designs.

All the 3D membranes have slip prevention according to the European standard EN 15836 and DIN 51097. Produced according the European standard EN 15836-2 (2010).

DIMENSIONS

Roll of 1.65 x 25 m.



GUARANTEE - 3D

• 12 years waterproofing guarantee

• 3 years antibacterial stains guarantee



SENSITIVE GREY



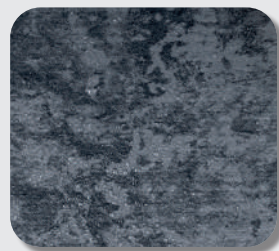
SENSITIVE SAND
156988/SSSA



SENSITIVE WHITE
156988/SSHB



SENSITIVE GREY
156988/SSGM



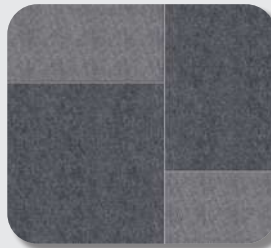
SENSITIVE BLACK
156988/SSNB



SENSITIVE BALI SAND
156988/SSBS



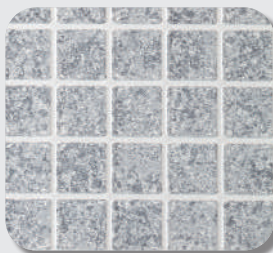
SENSITIVE BALI
156988/SSBA



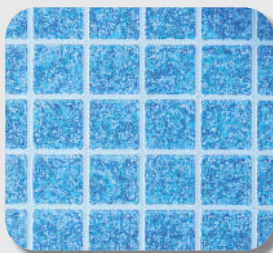
SENSITIVE BALI XL
156988/SSXL



SENSITIVE WOOD
156988/SSWO



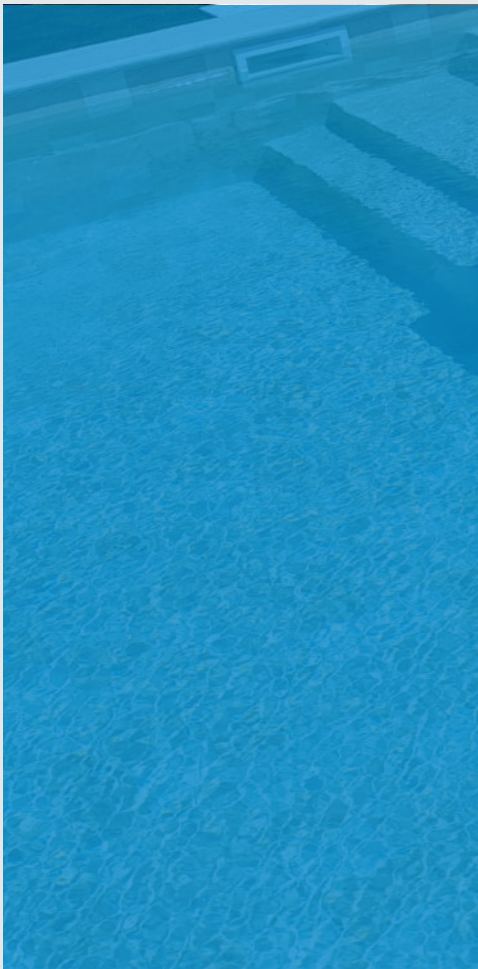
SPIRIT CERAM GREY
157009/SCG



SPIRIT CERAM BLUE
157009/SCB

SENSITIVE GREY





BALI SAND

8

THE +

- Flexible
- Smooth
- Varnish impregnation in all 4 layers
- Varnish coating
- Exclusive designs
- Multiple designs



GUARANTEE - DESIGN

- 12 years waterproofing guarantee
- 3 years antibacterial stains guarantee

SOPREMAPOOL DESIGN

150/100 REINFORCED MEMBRANE

PVC reinforced membrane of 1.5 mm with varnish impregnation in all 4 layers and varnished coating for superior protection against UV, microorganisms and chlorine.

DIMENSIONS

Roll of 1.65 x 25 m.

GRIP (anti-slip version)

All designs* are available in the antislip version.

DIMENSIONS

Roll of 1.65 x 10 m.

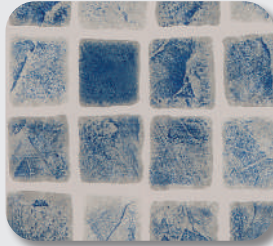
* Except Sky Blue and Pearl Black models.



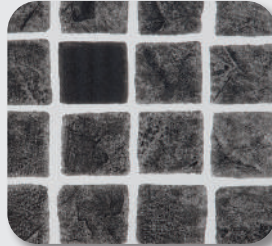
MARBELLA BLUE



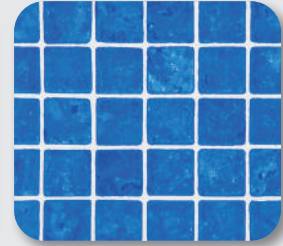
MARBELLA BLUE
156975/MMB



MARBELLA GREY
156975/MMG



MARBELLA BLACK
156975/MMBK



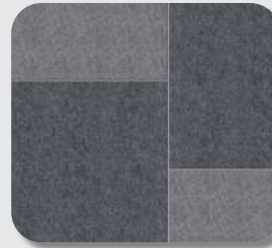
MOSAIC BLUE
156975/MNB



BALI SAND
156975/SDBA



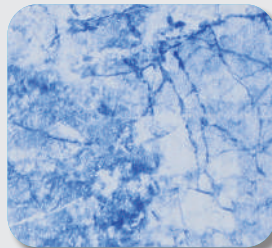
BALI
156975/BALI



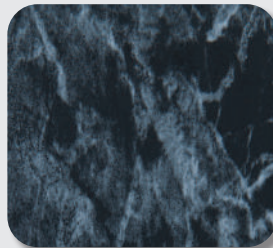
BALI XL
156975/XL



WOOD
156975/WO



SKY BLUE
156975/SB



PEARL BLACK
156975/PB

PEARL BLACK





MEDIUM GREY

THE +

- Flexible
- Smooth
- Varnish impregnation in all 4 layers
- Varnish coating
- Intense and multiple colors



GUARANTEE - PREMIUM

- 12 years waterproofing guarantee
- 3 years antibacterial stains guarantee

SOPREMAPOOL PREMIUM

150/100 REINFORCED MEMBRANE

PVC reinforced membrane of 1.5 mm with varnish impregnation in all 4 layers and varnished coating for superior protection against UV, microorganisms and chlorine.

DIMENSIONS

Roll of 1.65 x 25 m.

GRIP (anti-slip version)

All colors are available in the antislip version.

DIMENSIONS

Roll of 1.65 x 10 m.



SAND



LIGHT BLUE
156967/CA



AZURE BLUE
156967/AB



DARK BLUE
156967/DB



WILD MUSK
156967/VM



SAND
156967/SA



WHITE
156967/HB



LIGHT GREY
156967/GC



MEDIUM GREY
156967/GM



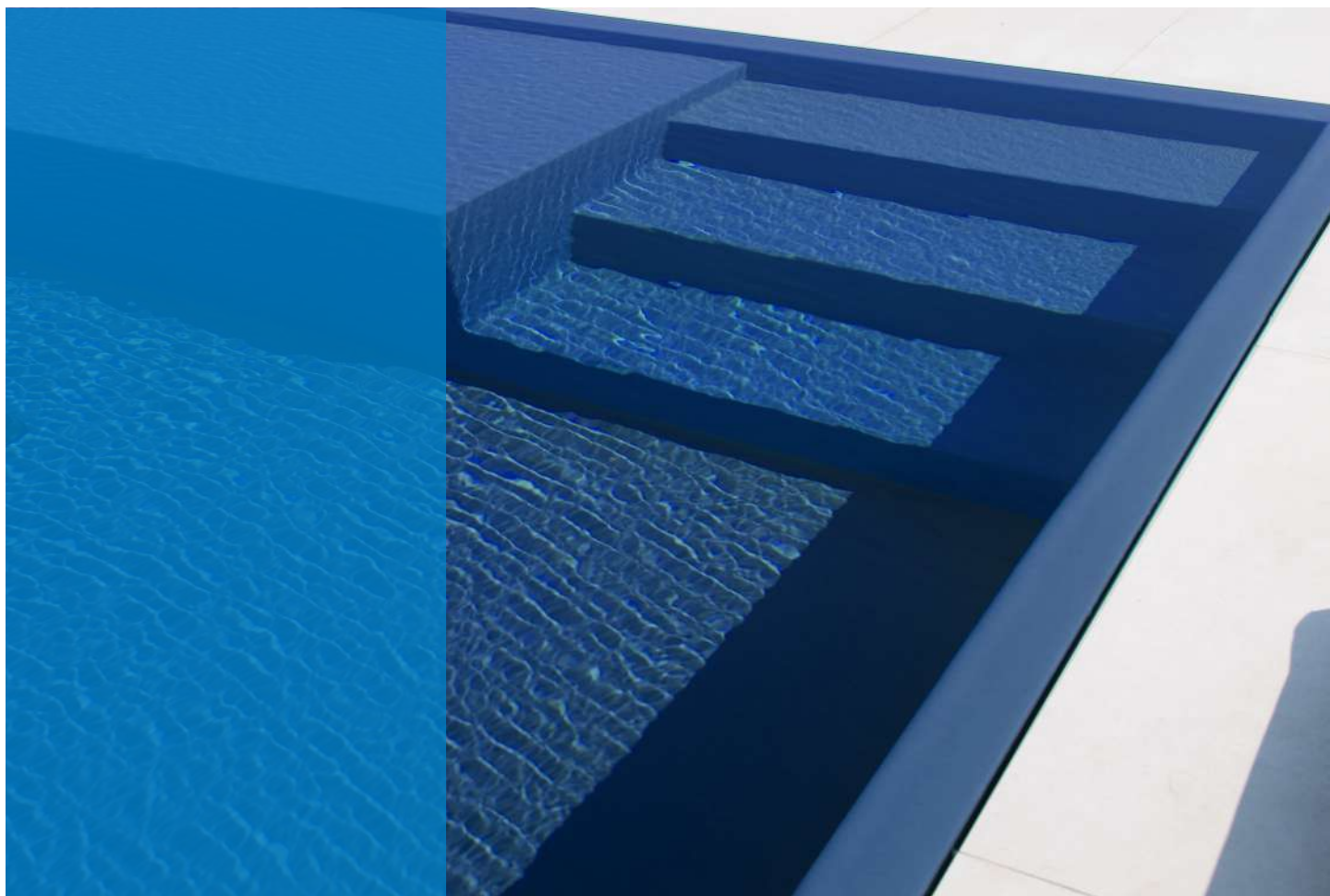
BASALT GREY
156967/GA



BLACK
156967/NB

DARK BLUE





SAPPHIRE BLUE

12

THE +

- Flexible
- Smooth
- Varnish impregnation in all 4 layers
- Intense and multiple colors

SOPREMAPOOL ONE

150/100 REINFORCED MEMBRANE

PVC reinforced membrane of 1.5 mm with varnish impregnation in all 4 layers and protection standard against UV and microorganisms.

DIMENSIONS

Roll of 1.65 x 25 m.

GRIP (anti-slip version)

All colors are available in the antislip version.

DIMENSIONS

Roll of 1.65 x 10 m.



GUARANTEE - ONE

• 10 years waterproofing guarantee



WHITE



LIGHT BLUE
156966/CA



AZURE BLUE
156966/AB



SHAPPHIRE BLUE
156966/BS



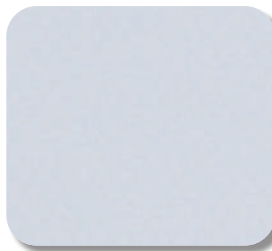
CARIBBEAN GREEN
156966/VC



NATURAL GREEN
156966/VG



SAND
156966/SA



WHITE
156966/HB



LIGHT GREY
156966/GC



MEDIUM GREY
156966/GM



BASALT GREY
156966/GA

BASALT GREY



COMPLEMENTS & ACCESSORIES



PVC LIQUID

Liquid PVC for liner covering inground pools.

Colors:

Transparent, Light Blue, Azure Blue, Sapphire Blue, Dark Blue, Caribbean Green, Natural Green, Wild Musk, Sand, White, Light Grey, Medium Grey, Basalt Grey, Black, Bali & Bali XL, Bali Sand, Wood, Sensitive Sand, Sensitive White, Sensitive Grey and Sensitive Black.

Content:
1 l.



ALSAN FLEX POOL

Alsan Flex POOL is both a sealant and an adhesive dedicated for swimming pools either ground pools (concrete, polyester) or above-ground pools.

Alsan Flex POOL is a one-component, moisture curing, elastic sealant. It is a high-modulus hybrid-based polymer.

Color:

White

Content:

290 ml.
Box with 12 units.



ALSAN FLEX POOL TR

Alsan Flex POOL TR is both a sealant and an adhesive dedicated for swimming pools either ground pools (concrete, polyester) or above-ground pools.

Alsan Flex POOL TR is a transparent one-component, moisture curing, elastic sealant. It is a high-modulus hybrid-based polymer.

Color:

Transparent

Content:

290 ml.
Box with 12 units.



ALSAN BOND POOL SP

Alsan Bond POOL SP is a fast-drying sprayable solvent-based adhesive dedicated to bonding the geotextile to the pool support prior to liner installation. It is suitable for indoor and outdoor applications.

Content:

500 ml.
Box with 12 units.



GLUE

Neoprene glue for single and double gluing the reinforced membrane to the pool structure at singular points.

Content:
5 l.



PVC METAL STRIP

Profile to weld the reinforced membrane on the vertical walls.

Content:

Lot of 10 units.

Dimensions:

2 m x 0,05 m



PVC METAL ANGLE

Profile to fix the reinforced membrane in pools of new construction or rehabilitations where there is a raising coronation.

Dimensions:

2 m
Lot of 10 units.

ALUMINIUM PROFILE HUNG

Profile to anchor the reinforced membrane, especially suitable for new construction pools.

Dimensions:
2 m
Lot of 10 units.

PVC CORD

Cord to weld at the extreme of the reinforced membrane that allows it to be attached to the corresponding profile.

Content:
Lot of 2 units
Dimensions:
25 m x 9 mm

PVC BORDER

PVC cord to close the anchoring profile.

Colors:
White, Medium Grey, Dark Grey, Blue and Sand.
Content:
30 ml.

EXPANSION NAILS

Expansion nail for fixing.

Content:
100 Units
Dimensions:
4.8 \varnothing x 26 mm

PP350 GEOTEXTILE

350 g / m² polypropylene geotextile for the separation between the membrane and the pool shell.

Dimensions:
50 x 2 m

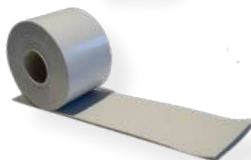
LIQUID PVC APPLICATOR

Applicator for the PVC liquid.

DISINFECTANT FOR STRUCTURE

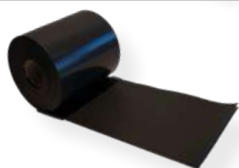
Product to clean and disinfect the pool structure. Procedure prior to the installation of the reinforced membrane that prevents the proliferation of microorganisms between the soil and the membrane.

Content:
250 ml. 2.5% solution.

WELDING STRIP

Strip to install Sopremapool 3D membranes.

Dimensions:
25 m x 0,15 m

PVC MARKING STRIP

Band for the separation of the swimming lanes.

Dimensions:
25 m x 0,25 m

POOL LEISTER KIT

Complete kit of tools for the installation of synthetic membranes in swimming pools: Leister Triac AT 230V / 1600 W; 40 mm, 20 mm and 5 mm flat nozzle for hot air torch; quick flat bandlet nozzle 8x2 mm; 40 mm silicone pressure roller; 8 mm brass pressure castor; synthetic diaphragm welding tip; angled floor chisel 28 cm for PVC membranes; anti-cut gloves level 5 Taeki size 10; cutter blades 18 mm metal body; cutter retractable blade metal body; spid convex brush brass-plated steel; meter tape 5 m x 25 mm; bi-material PH 1x100 screwdriver; transport package <30 kg.

**SOPREMA Group
at your service**

SOPREMAPOOL
Let's go swimming!

www.sopremapool.com
sopremapool@soprema.com

