

OMEGA



2 YEAR
WARRANTY



- + Vertical, ducted installation with modular air intake/outlet configurations
- + Available in 5 capacities (10 to 28 l/h)
- + Air heating options (electrical heating or hot water coil)
- + Titanium water condenser option, enabling to re-use the excess heat to warm the pool

ACCESSORIES INCLUDED IN THE PACK



Hygro control box

PRODUCT REFERENCES

OMEGA ducted	10T	14T	16T	20T	28T
Standard model	W28OM10	W28OM14	W28OM16	W28OM20	W28OM28
Model with water condenser option	W28OM10C	W28OM14C	W28OM16C	W28OM20C	W28OM28C
Model with electric heating option	W28OM10E	W28OM14E	W28OM16E	W28OM20E	W28OM28E
Model with electric heating option and condenser	W28OM10EC	W28OM14EC	W28OM16EC	W28OM20EC	W28OM28EC
Model with hot water coil option	W28OM10B	W28OM14B	W28OM16B	W28OM20B	W28OM28B
Model with hot water coil option and condenser	W28OM10BC	W28OM14BC	W28OM16BC	W28OM20BC	W28OM28BC

TECHNICAL FEATURES

OMEGA ducted	10T	14T	16T	20T	28T
Capacity (l/h)*	10	14	16	20	28
Absorbed power*** (W)	3 840	4 390	5 830	6 430	9 900
Air flow (m ³ /h)	3 000	4 000	5 000	6 000	8 500
Available pressure (mmCE)	20				
Electric power supply	380-400V / 3N~ / 50Hz				
Nominal absorbed intensity (A)***	7,6	9	12	16,4	19
Max. absorbed intensity (A)***	13	16	18,5	20,1	23,8
Refrigerant fluid	R407C				
Refrigerant fluid quantity (kg)	3,5/3,8 (1)		3,5/3,9 (1)	3,5/3,8 (1)	8,2/8,5 (1)
Acoustic Power ((dB(A))**	-	83,6	-	82	-

For all OMEGA orders a deposit of 30% will be requested with the order.

* Standard unit, in the following nominal conditions: air 30°C, humidity 70%.

** Values measured and certified in compliance with EN ISO 3741 & EN ISO 354 standards, by CCTM (Centre de Transfert de Technologie du Mans) on standard units.

*** excluding the power consumption of electric heating option.

**** An annual check of the sealing of the refrigerating circuit must be carried out for all refrigerating equipment with a load in refrigerating fluid >2 kg and < 30 kg (cf. Art 3 7/05/05 regulation, French decree n° 737-2007).

(1) for units with water condenser option.

ELECTRIC RESISTANCE SPECIFICATIONS

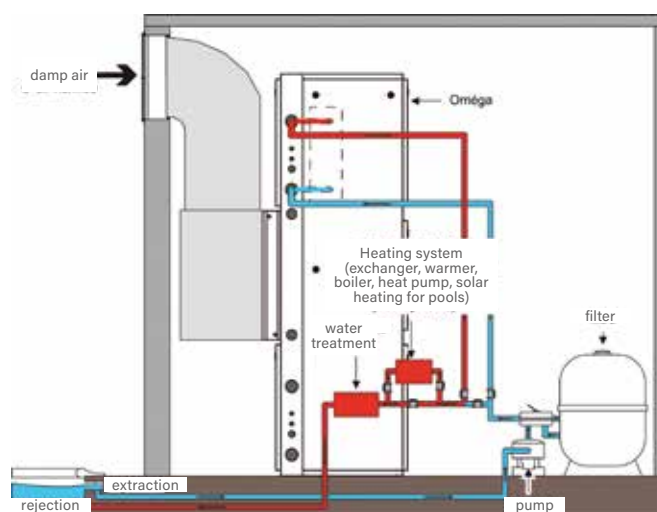
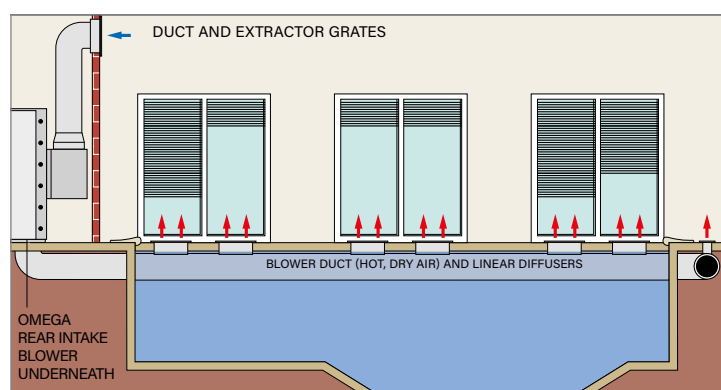
OMEGA ducted	10T	14T	16T	20T	28T
Electric resistance power (kW)	24	34	42	53	76
Electric resistance Max. absorbed intensity (A)	9,5	11,6	13,6	15,2	23

HOT WATER COIL SPECIFICATIONS

OMEGA ducted	10T	14T	16T	20T	28T
Power (kW) with primary at 50-40 °C / 90-70 °C	9,5 / 24	11,6 / 34	13,6 / 42	15,2 / 53	23 / 76
Water flow (m ³ /h) with primary at 90/70°C	1,66	2,03	2,35	2,64	3,98
Load loss (mmCE) with primary 90/70°C	930	1340	1760	2170	1410
Connection (mm)	20 / 27 male thread				

INSTALLATION

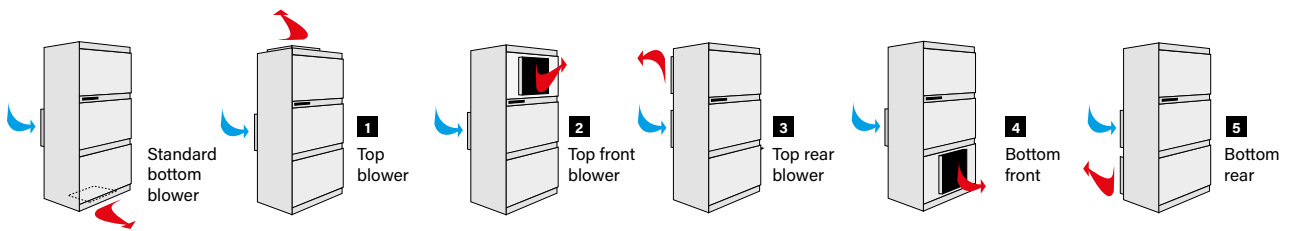
- Installation in a technical room nearby the pool hall.
- Damp air extractor frame on the rear face for connection to wall or ceiling extractor duct.
- Hot, dry air blower either under or over the system for direct assembly on buried ducts or ceiling service area ducts.
- Simplified aeraulic assembly with very little load loss making it possible to keep the available ventilator pressure for the duct network.
- Hot water coil or extra electric heating fitted inside the system (see options).
- A remote regulator box, temperature sensor and humidity sensor in a duct and box enable you to adjust the operation of one unit or two dehumidifier units.



BLOWER OPTIONS

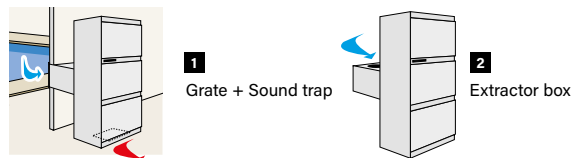
OMEGA ducted		10T	14T	16T	20T	28T
Blower on the top	1	W28SODE			W28SODE20	W28SODE28
Blower on the top to the front	2	W28SOHAV			W28SOHAV20	W28SOHAV28
Blower on the top to the rear	3	W28SOHAR			W28SOHAR20	W28SOHAR28
Blower on the bottom to the front	4	W28SOBAV				
Blower on the bottom to the rear	5	W28SOBAR				

The standard blower on the OMEGA systems is installed under the system (blower inversed compared to the CEA). Optionally, blower can be installed on the top or bottom and either to the front of the rear.



OMEGA INTAKE

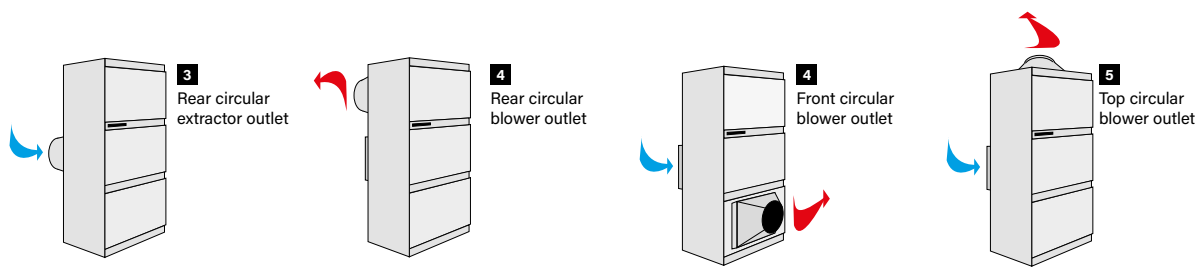
OMEGA ducted		10T	14T	16T	20T	28T
Extractor grate 1000 x 600 (4000 à 6000 m ³ /h) with counter frame	Grate	WFA01477				
	Counter frame	WFA01479				
Sound trap 600 mm (for direct intake from 100 X 600 grate) 1		WCH01236				
Extraction box for Omega systems 2	Caisson	WCH02822		WCH03048		WCH03049
	Diameter	Ø500		Ø630		Ø500
Intake box for 1000 x 600 grate	Caisson	WCH02822		WCH03048		WCH03049
	Diameter	Ø500		Ø630		Ø500



EXTRACTION AND SUPPLY ACCESSORIES

OMEGA ducted	10T	14T	16T	20T	28T
Diameter	Ø500			Ø630	
Rear circular extractor accessories	3	WCH03701		WCH03702	WCH03703
Front/rear circular blower accessories	4	WCH03595		WCH03331	WCH03704
Upper circular blower accessories	5	WCH03705		WCH03706	WCH03707

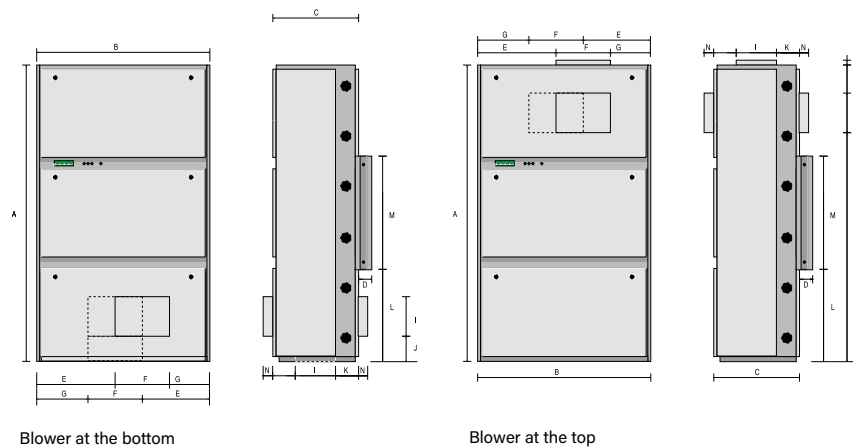
Other accessories or casing: contact us.



WEIGHT AND DIMENSIONS

OMEGA ducted	10T	14T	16T	20T	28T
Weight (kg)	342	344	346	397	505

	Oméga 10 to 20	Oméga 28
A	1940	2170
B	1150	1734
C	625	652
D	70	102
E	445	413
F	410	908
G	295	413
H	240	190
I	345	387
J	75	240
K	225	216
L	655	673
M	630	824
N	60	50
O	20	0
Extractor Width	1060	1650



ACCESSOIRES EN OPTION

Filters for OMEGA 10, 14, 16 et 20 tri	Filters for OMEGA 28 tri	Remote regulator box for the dehumidifier
WSD01916	WSD03350	R0771000