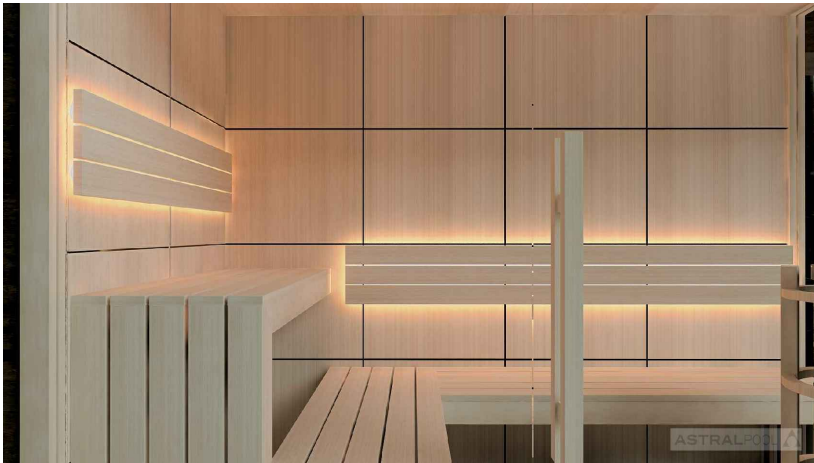
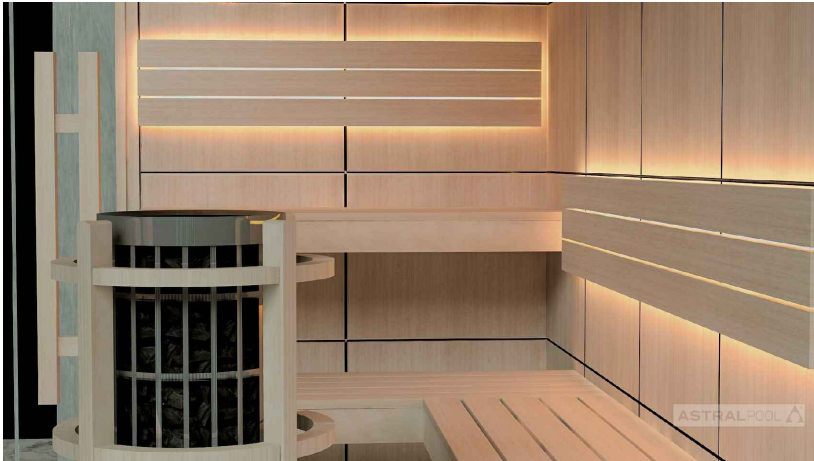


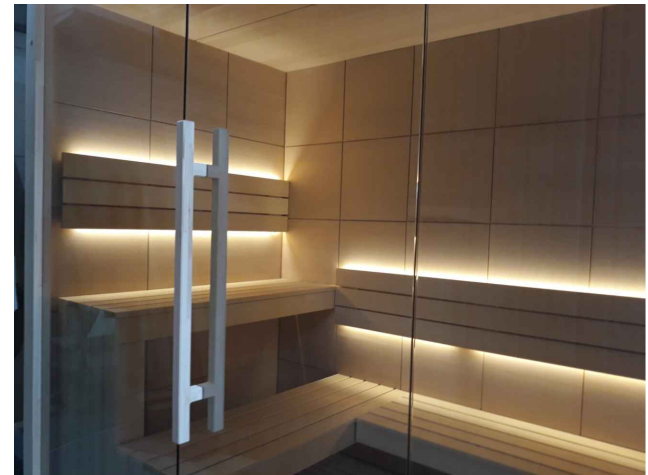
LOBOS

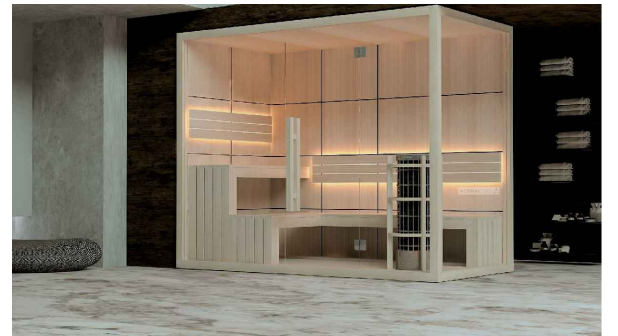
FLUIDRA ARCHITECTS



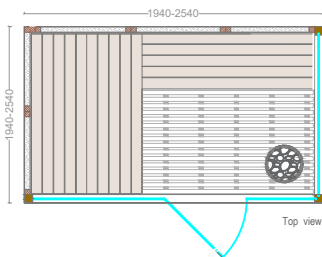
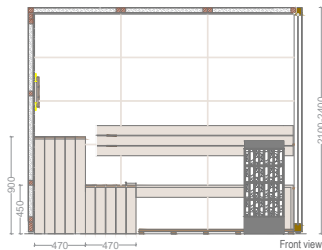


Clear design
Wood of great quality
Elegant detail





- Construction of Hemlock plywood vertical panels 66mm thick
- Tongue and groove system for optimum sealing. Temperature resistance up to 150 ° Celsius
- Thermal insulated inside with mineral wool and moisture insulated with aluminium foil
- Floor frame made of impregnated solid wood
- Floor grill made of Abachi wood
- Full glass front panel of 8mm tempered transparent glass with solid wooden frame
- Door: 8mm tempered transparent glass no frame; wooden handle square profile
- Benches made of Abachi or similar type with low heat conductivity. Benches withstand the weight of 200 kg/m.
- Sauna Led light along benches and wall light shades, 12V, warm white light
- Heater Power 6kW
- Control panel: touch screen series
- Silicon wiring 400 V III + N- wire + Ground wire
- Sauna rocks
- Air ventilation
- Wooden accessories set – bucket with ladle, combined thermo hygrometer, sand timer



Fluidra Balkans JSC
190, GOLYAMOKONARSKO
SHOSSE, 4027 PLOVDIV
BULGARIA
Tel. + 359-32-960-189
www.fluidra.com

LOBOS

FLUIDRA ARCHITECTS