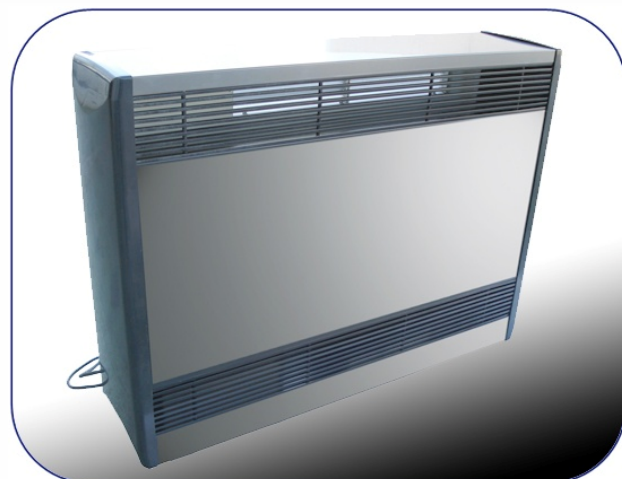
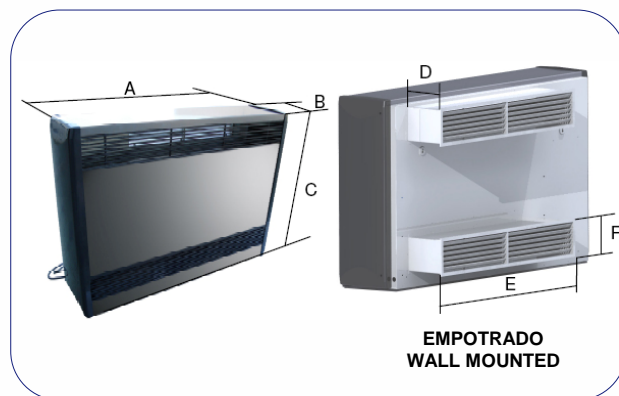


La nueva consola deshumidificadora CDP LINE se utiliza en instalaciones donde se requiere un control de humedad y temperatura.

The new CDP LINE dehumidifier is used in facilities requiring humidity control and individualized temperature management.



| MODELOS MODELS | CODIGO CODE | | ELECTR.RES H2O BAT. | CAPACIDAD CAPACITY | EMPOTR. WALL- MOUNTED |
|-------------------|-------------|------------|------------------------|-----------------------|-----------------------------|
| | 220/2/50Hz | 380/3/50Hz | | | |
| CDP-2+E | 41493 | 41493-003 | 4 Kw | 2,1 l/h | ✓ |
| | 41494 | 41494-003 | | | |
| CDP-2+A | 41495 | 41495-003 | 6 Kw | | ✓ |
| | 41496 | 41496-003 | | | |
| CDP-3+E | 41497 | 41497-003 | 4 Kw | 3,1 l/h | ✓ |
| | 41498 | 41498-003 | | | |
| CDP-3+A | 41499 | 41499-003 | 9 Kw | | ✓ |
| | 41500 | 41500-003 | | | |
| CDP-4+E | 41501 | 41501-003 | 5 Kw | 4,2 l/h | ✓ |
| | 41502 | 41502-003 | | | |
| CDP-4+A | 41503 | 41503-003 | 12 Kw | | ✓ |
| | 41504 | 41504-003 | | | |
| CDP-5+E | 41505 | 41505-003 | 5 Kw | 5,1 l/h | ✓ |
| | 41506 | 41506-003 | | | |
| CDP-5+A | 41507 | 41507-003 | 12 Kw | | ✓ |
| | 41508 | 41508-003 | | | |



CARACTERÍSTICAS TÉCNICAS / TECHNICAL FEATURES

| MODELOS MODELS | POT CALORIFICA HEAT POWER | VENTILADOR FAN FLOW | CONSUMO CONSUMPTION (Amp) | | PESO WEIGHT (kg) | DIMENSIONES / DIMENSIONS Tolerancia ±1cm / Tolerance ±1cm | | | | | |
|-------------------|------------------------------|------------------------|------------------------------|------------|---------------------|--|--------|--------|--------|--------|--------|
| | | | 220/2/50Hz | 380/3/50Hz | | A (mm) | B (mm) | C (mm) | D (mm) | E (mm) | F (mm) |
| | | | CDP-2+E | 4277 W. | | 700 m ³ /h | 25,1 | 9,1 | 74 | 1210 | 315 |
| CDP-2+A | 7,1 | 3,1 | 78 | | 360 | | 700 | 150 | | | |
| CDP-3+E | 5313 W. | 800 m ³ /h | 26,1 | 9,4 | 74 | + 90 conexiones connections | 315 | 900 | 360 | 700 | 150 |
| CDP-3+A | | | 8,1 | 3,4 | 78 | | | | 360 | 700 | 150 |
| CDP-4+E | 7068 W. | 1000 m ³ /h | 33,2 | 12 | 92 | 1510 | 315 | 900 | 360 | 950 | 150 |
| CDP-4+A | | | 10,1 | 4,5 | 102 | | | | 360 | 950 | 150 |
| CDP-5+E | 8473 W. | 1200 m ³ /h | 34,5 | 13 | 92 | + 90 conexiones connections | 315 | 900 | 360 | 950 | 150 |
| CDP-5+A | | | 11,5 | 5,4 | 102 | | | | 360 | 950 | 150 |

Nos reservamos el derecho de cambiar total o parcialmente las características de nuestros artículos o contenido de este documento sin previo aviso.
We reserve the right to change all or part of the features of the articles or contents of this document, without prior notice.