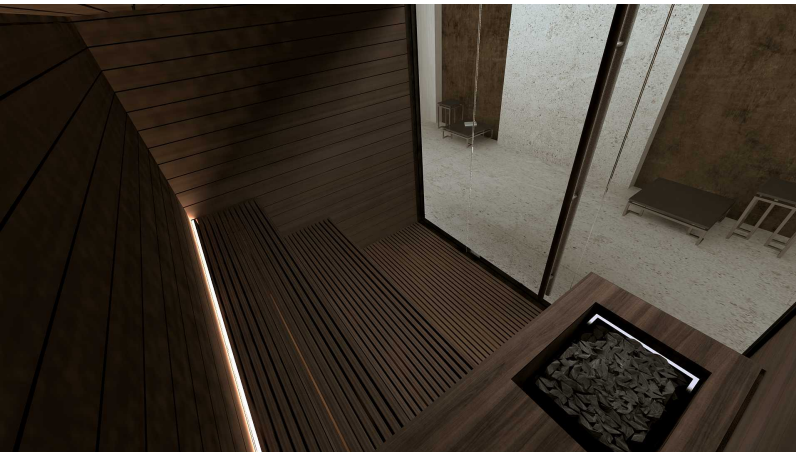


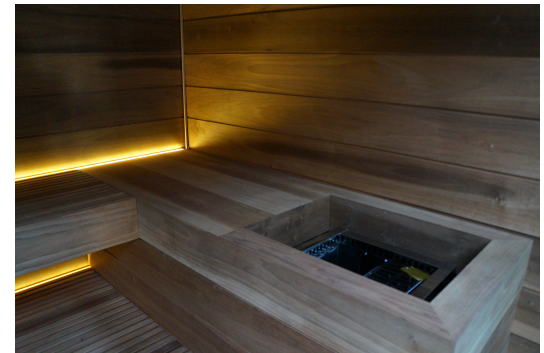
ESSENTIA

FLUIDRA ARCHITECTS





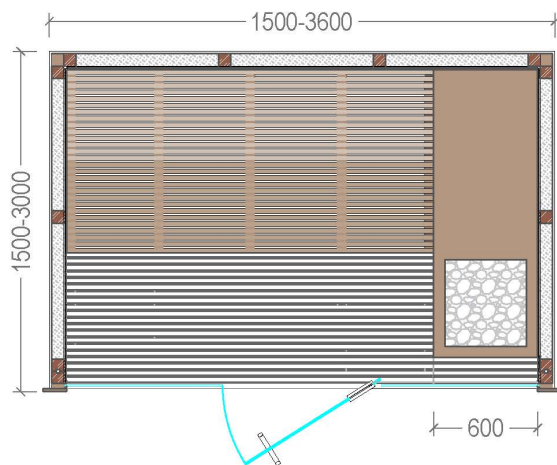
Precise lines.
Accurately balanced proportions.
Monomaterial surfaces traced by thin shadow lines that reveal the mass.
Exclusive natural wood.
Creativity and care of detail fuse together to form a refined and essential concept.
Perfectly blending nordic tradition with Italian design timeless elegance,
Essentia is the new sauna fitting every kind of location.



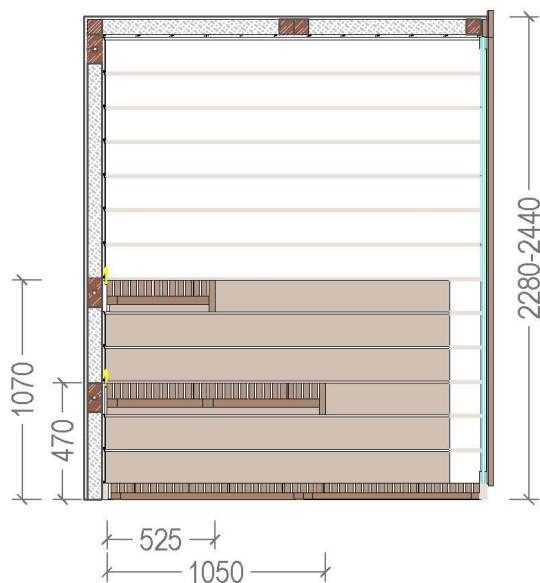
ESSENTIA²



Top view



Side view



FLUIDRA ARCHITECTS

- Construction of Thermo Magnolia / Thermo Aspen wood horizontal panels 85mm thick.
- Tongue and groove system for optimum sealing.
Temperature resistance up to 150 ° Celsius
- Thermal insulated inside with mineral wool and moisture insulated with aluminium foil
- Floor frame made of impregnated solid wood moist ure resist ant.
- Floor grill made of Thermo Magnolia / Thermo Aspen
- Front panel: 8mm tempered glasf transarent with wooden frame; handle cilindric profile ,auto closing hydraulic mechanism
- Open Benches made of Thermo Magnolia / Thermo Aspen with low heat conductivity.
Benches withstand the weight of 200 kg/m
- Sauna Led light behind benches, 12V, warm white light
- Lux sauna Heater . Power according to different sizes.
Manual for installation and use. Heater protection box.
- Control panel: Touch screen
- Silicon wiring 400 V III + N- wire + Ground wire
- Sauna rocks
- Air ventilation - ensuring a minimum of five air changes per hour
- S.S. accessories set – bucket with ladle, combined thermo-hygrometer

Options



Sauna & Steam

Fluidra Balkans JSC
190, GOLYAMOKONARSKO SHOSSE,
4027 PLOVDIV
BULGARIA
Tel. + 359-32-960-189
www.fluidra.com

ESSENTIA

FLUIDRA ARCHITECTS