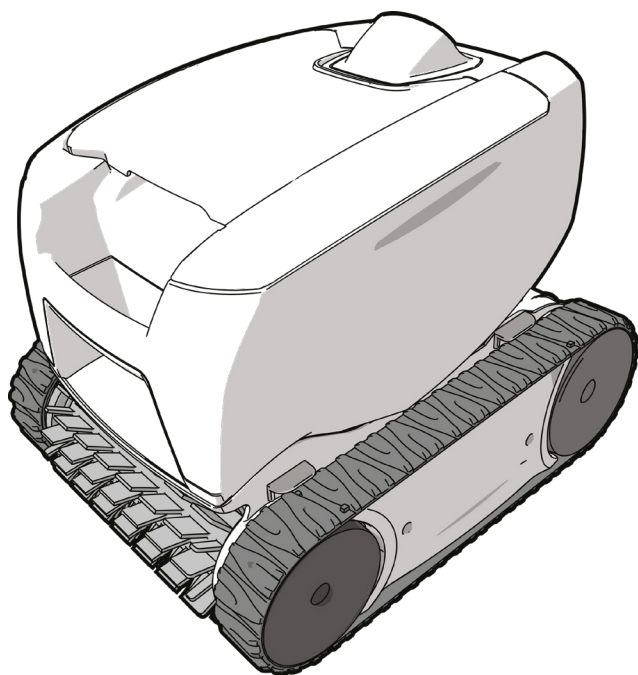


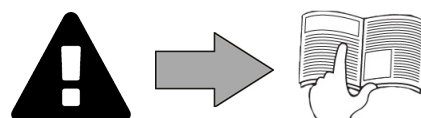
TornaX Genius

Installation and user manual - English
Electric cleaner
Translation of the original instructions in French

EN



More documents on:
www.zodiac.com



WARNINGS

EN

GENERAL WARNINGS

- Failure to respect the warnings may cause serious damage to the pool equipment or cause serious injury, even death.
- Only a person qualified in the technical fields concerned (electricity, hydraulics or refrigeration) is authorised to perform any servicing or repairs to the appliance. The qualified technician working on the appliance must use/wear personal protective equipment (such as safety goggles and protective gloves, etc.) in order to reduce the risk of injury occurring when working on the appliance.
- Before handling the machine, ensure that it is switched off and isolated.
- The appliance is intended to be used with pools for a specific purpose; it must not be used for any purpose other than that for which it was designed.
- This appliance is not intended for use by children.
- This appliance is not intended for use by individuals (including children, over the age of 8) lacking in experience or with impaired physical, sensory or mental capabilities, unless:
 - they receive supervision and are instructed on how to use the appliance by a person responsible for their safety; and
 - if they understand the hazards involved.
- Children must be supervised to ensure that they do not play with the appliance.
- The appliance must be installed according to the manufacturer's instructions and in compliance with local standards in force. The installer is responsible for installing the appliance and for compliance with national installation regulations. Under no circumstances may the manufacturer be held liable in the event of failure to comply with applicable local installation standards.
- For any work other than the simple user maintenance described in this manual, the product should be referred to a qualified professional.
- Incorrect installation and/or use may cause serious damage to property or serious injuries (possibly causing death).
- All equipment, even postage and packing paid, travels at the risks and perils of the recipient. The latter shall issue reserves in writing on the carrier's delivery slip if damage is detected, caused during transport (confirmation to be sent to the carrier within 48 hours by registered letter). In the event that an appliance containing refrigerant has been turned on its side, mention your reservations in writing to the carrier.
- If the appliance suffers a malfunction, do not try to repair it yourself; instead contact a qualified technician.
- Refer to the warranty conditions for details of the permitted water balance values for operating the appliance.
- Deactivating, eliminating or by-passing any of the safety mechanisms integrated into the appliance shall automatically void the warranty, in addition to the use of spare parts manufactured by unauthorised third-party manufacturers.
- Do not spray insecticide or any other chemical (flammable or non-flammable) in the direction of the appliance, as this may damage the body and cause a fire.
- Do not touch the fan or moving parts and do not place a rod or your fingers in the vicinity of the moving parts during operation of the appliance. Moving parts can cause serious injury or even death.

WARNINGS ASSOCIATED WITH ELECTRICAL APPLIANCES

- The power supply to the appliance must be protected by a dedicated 30 mA residual current device, complying with the standards and regulations in force in the country in which it is installed.
- Do not use any extension lead when connecting the appliance; connect the appliance directly to a suitable power supply.
- Before carrying out any operations, check that:
 - The required input voltage indicated on the appliance information plate corresponds to the mains voltage;
 - The mains supply is compatible with the appliance's electricity needs and is correctly grounded;
 - The plug (where applicable) is compatible with the socket.
- In the event of abnormal operation or the release of odours from the appliance, turn it off immediately, unplug it from its power supply and contact a professional.
- Before servicing or performing maintenance on the appliance, check that it is powered off and completely disconnected from the power supply.
- Do not disconnect and reconnect the appliance to the power supply when in operation.
- Do not pull on the power cord to disconnect it from the power supply.
- If the power cord is damaged, it must be replaced by the manufacturer, an authorised representative or a repair facility only.
- Do not perform maintenance or servicing operations on the appliance with wet hands or if the appliance is wet.
- Before connecting the appliance to the power supply, check that the connection unit or socket to which the appliance will be connected is in good condition and shows no signs of damage or rust.
- For any component or sub-assembly containing a battery: do not recharge or dismantle the battery, or throw it into a fire. Do not expose it to high temperatures or direct sunlight.
- In stormy weather, disconnect the appliance from the power supply to prevent it from suffering lightning damage.
- Do not immerse the appliance in water (with the exception of cleaners) or mud.

SPECIFIC FEATURES APPLICABLE TO "Pool cleaners"

- The cleaner is designed to operate properly in pool water at a temperature of between 15°C and 35°C.
- To avoid possible injury or damage to the cleaner, do not operate the cleaner out of the water.
- In order to prevent possible injury, bathing is prohibited when your cleaner is in the pool.
- Do not use the cleaner during shock chlorination.
- Do not leave the cleaner unattended for an extended period.

WARNING ON THE USE OF A CLEANER IN A POOL WITH A VINYL SURFACE:

- Before installing your new cleaner, carefully inspect the lining of your pool. If the liner has eroded in some areas, or if you notice gravel, folds, roots or corrosion caused by metal beneath the liner, or if you notice that the surface (floor and walls) is damaged, do not install the cleaner before performing the necessary repairs or before having the liner replaced by a qualified professional. The manufacturer may not be held liable in any way for damage caused to the liner.
- The surface of certain vinyl patterned surfaces can wear rapidly and the patterns disappear on contact from objects such as cleaning brushes, toys, inflatable buoys, chlorine distributors and automatic pool cleaners. The decoration on some vinyl surfaces can be scratched or worn by basic friction such as through the use of a pool brush. The colours of certain patterns can also be erased during use or when in contact with objects in the pool. The pool cleaner manufacturer may not be held liable for the erased patterns, wear or scratching of vinyl surfaces, which are not covered by the limited warranty.



- Before handling the appliance, it is vital that you read this installation and user manual, as well as the "warnings and warranty" booklet delivered with the appliance. Failure to do so may result in material damage or serious or fatal injury and will void the warranty.
- Keep and pass on these documents for reference during the appliance's service life.
- The distribution or modification of this document in any way is prohibited, without prior authorisation from Zodiac®.
- Zodiac® is constantly developing its products to improve their quality. The information contained herein may therefore be modified without notice.

CONTENTS



1 Specifications

4

1.1 | Description

4

1.2 | Technical specifications and parts list

5



2 Installation

6

2.1 | Set-up

6

2.2 | Attachment to the base

6



3 Use

7

3.1 | Operating principle

7

3.2 | Pool preparation

7

3.3 | Immersing the cleaner

7

3.4 | Electricity supply connections

8

3.5 | Starting the cleaning cycle

9

3.6 | Ending the cleaning cycle

10



4 Maintenance

11

4.1 | Cleaning the cleaner

11

4.2 | Cleaning the filter

11

4.3 | Cleaning the propeller

12

4.4 | Replacing the brush

13

4.5 | Replacing the tracks

14



5 Troubleshooting

15

5.1 | Appliance behaviour

15

5.2 | User alerts

16



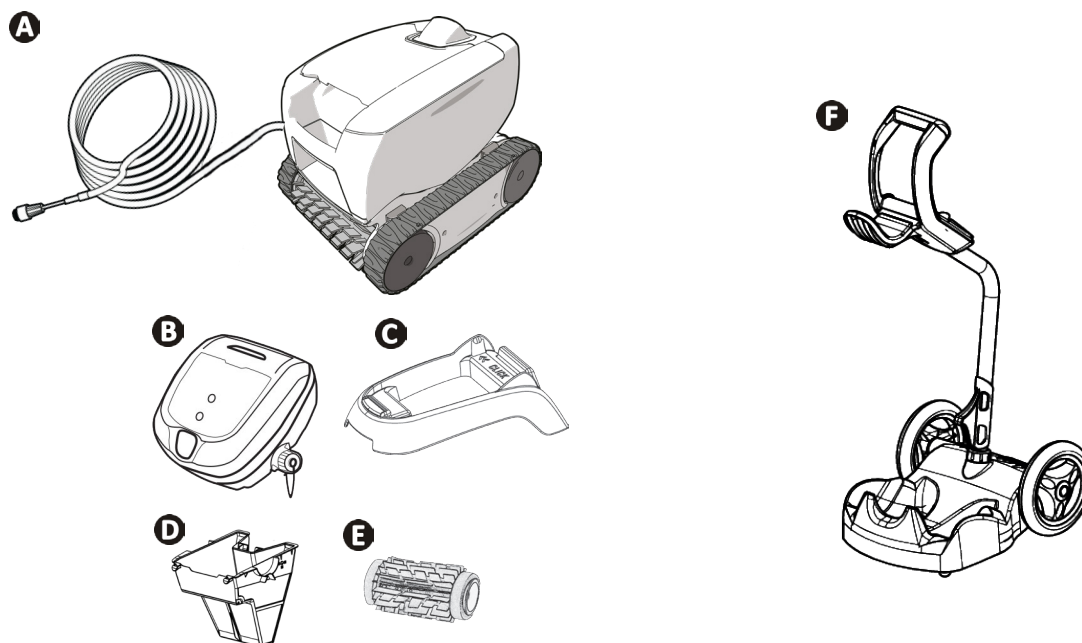
Tip: to make it easier to contact your retailer

Write down your retailer's contact details to help you find them more easily and fill in the "product" information on the back of the manual; your retailer will ask you for this information.



1 Specifications

➤ 1.1 | Description



A	Cleaner + floating cable	✓
B	Control box	✓
C	Base for control box	✓
D	100µ fine debris filter	✓
	200µ large debris filter	+
	60µ very fine debris filter	+
E	Standard flap brush/ Tile brush (depending on the model)	✓
	Tile brush	+
F	Caddy kit	+

✓: Supplied +: Available as an option

Symbol	Description	
	Starting / Stopping the appliance:	✓
	"Floor only" cleaning	Depending on the model
	"Floor + Walls" cleaning	Depending on the model
	"Control" indicator	✓
	Choice of surface to be cleaned:	Depending on the model
	"Floor only"	
	"Floor + Walls"	

✓: Available

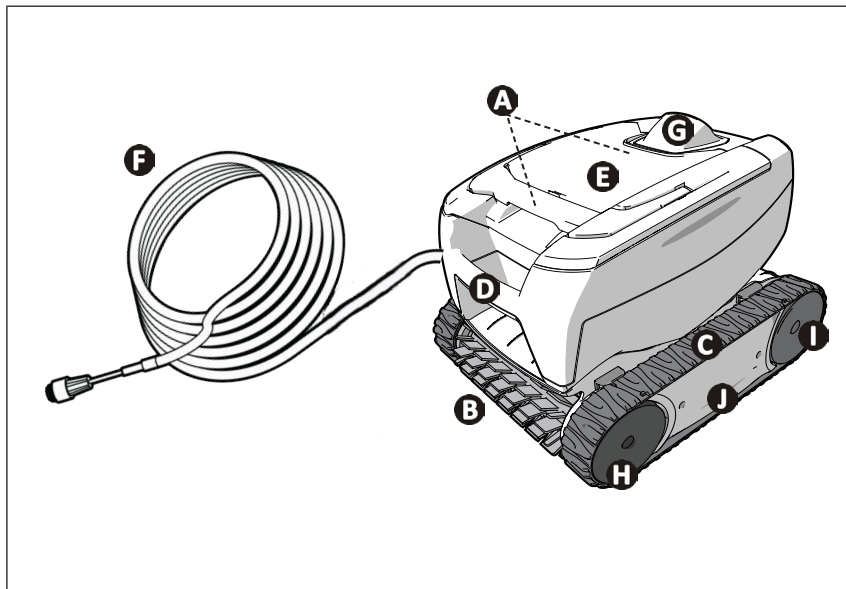
➤ 1.2 I Technical specifications and parts list

1.2.1 Technical specifications

Control box power supply voltage	100-240 VAC, 50/60 Hz
Cleaner power supply voltage	30 VDC
Maximum power input	100 W
Cable length	14 m or 16.5 m (depending on the model)
Cleaner size (L x W x h)	37 x 29 x 30 cm
Package size (L x W x H)	56 x 37 x 38 cm
Cleaner weight	5.5 kg
Packaged weight	10.1 kg
Theoretical cleaning width	17 cm

EN

1.2.2 Parts List

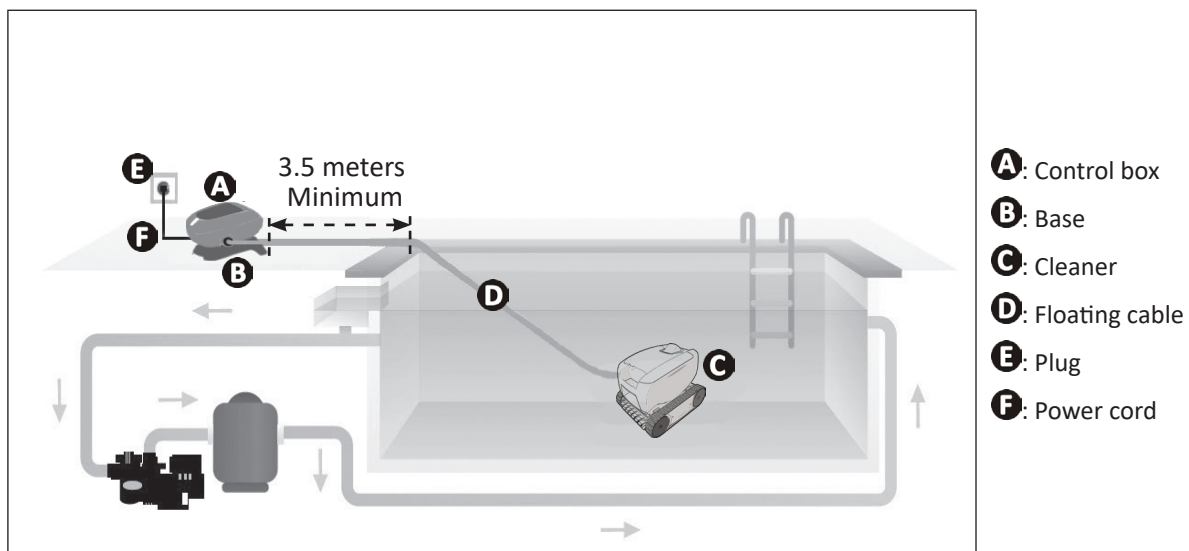


- A**: Filter access handle (location varies depending on the model)
- B**: Brush
- C**: Tracks
- D**: Carry handle
- E**: Transparent window (depending on the model)
- F**: Floating cable
- G**: External flow guide
- H**: Front wheels
- I**: Rear wheels
- J**: Cartridges

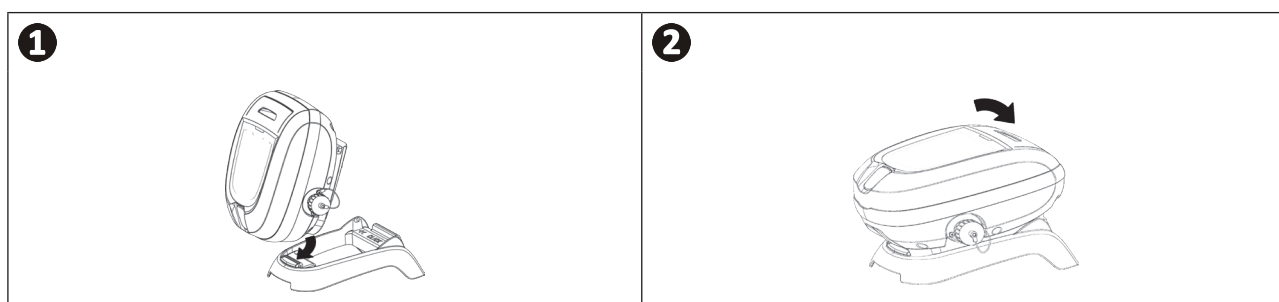


2 Installation

2.1 | Set-up



2.2 | Attachment to the base





3 Use

3.1 I Operating principle

The cleaner is separate from the filtration system and can function independently. It simply needs connecting to the mains.

It finds the best route to move around and clean the areas of the pool for which it has been designed (depending on the model: floor only, floor and walls). Debris is sucked in and stored in the cleaner's filter.

The control box is used to remotely control your cleaner and provide initial diagnostics indicators.

EN

3.2 I Pool preparation



- This product is intended to be used in pools which are permanently installed. Do not use it in pools which may be dismantled. A permanent pool is built into the ground or on the ground and cannot be easily dismantled and stored.

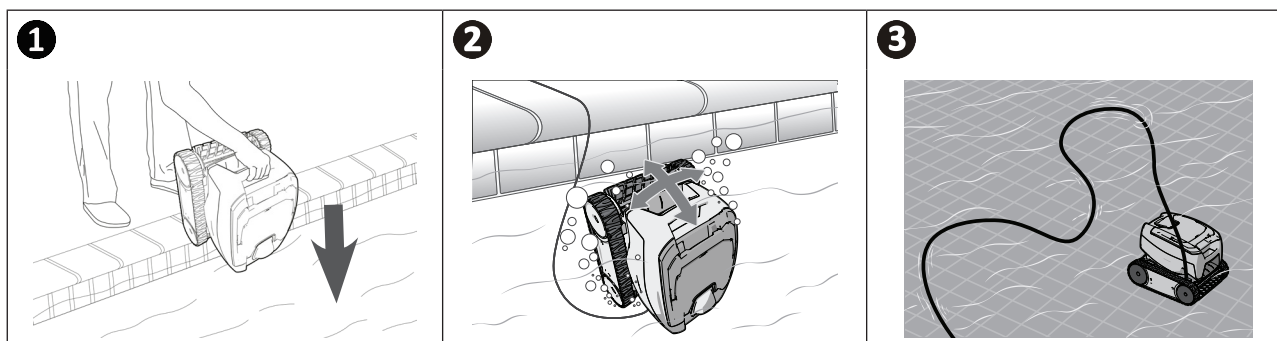
- The appliance must operate in pool water with the following properties:

Water temperature	Between 15°C and 35°C
pH	Between 6.8 and 7.6
Chlorine	< 3 mg/ l

- When the pool is dirty, especially when commissioning, remove the largest debris using a net in order to optimise the appliance's performances.
- Remove any thermometers, toys and other objects that might damage the appliance.

3.3 I Immersing the cleaner

- Place as much of the floating cable as possible in the water.
- Place the cleaner into the water using the handle (see figure 1).
- Move it slightly in all directions so that the air contained in the cleaner escapes (see figure 2).
- It is essential that the appliance sinks on its own and settles on the pool floor (see figure 3)..



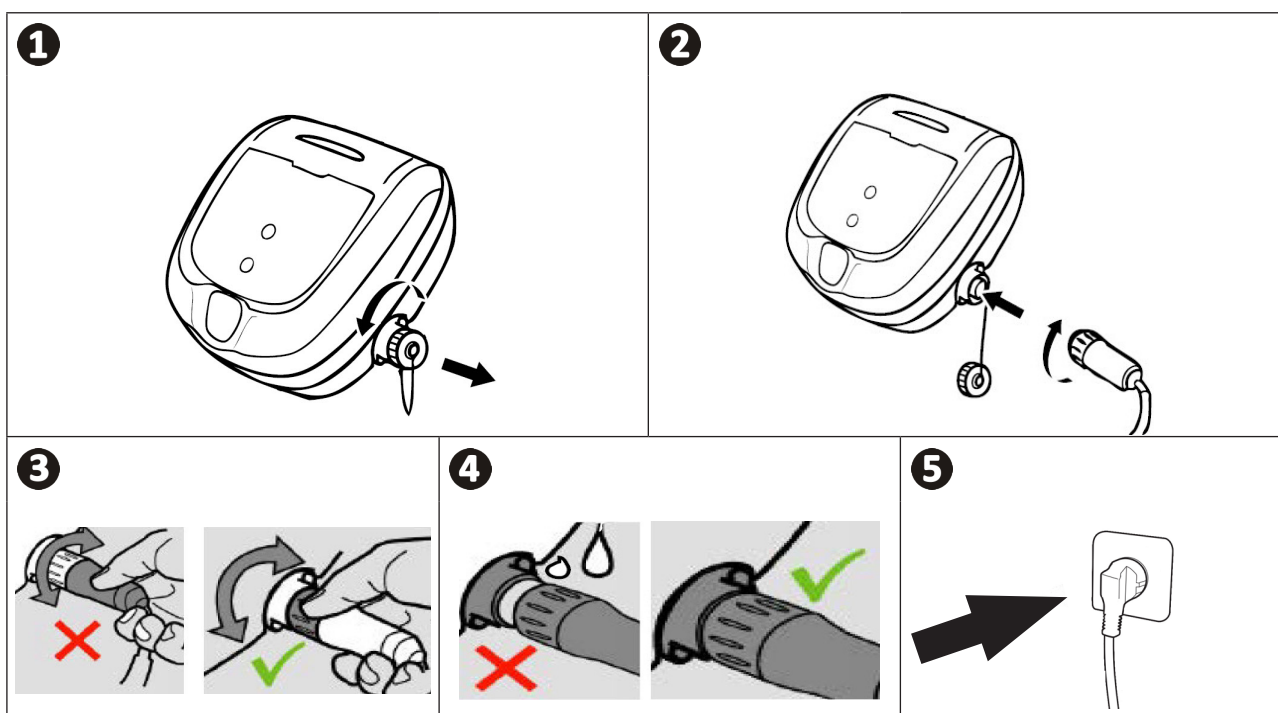
➤ 3.4 I Electricity supply connections

To prevent all risks of electrocution, fire or serious injury, please comply with the following instructions:



- Use of an electrical extension is prohibited when connecting the control box.
- Make sure that the socket can be easily accessed at all times and is protected from rain or splashes.
- The control box is splash-proof, but must not be immersed in the water or any other liquid. It must not be installed in a floodable area; keep it at least 3.5 metres away from the edge of the pool and avoid exposing it to direct sunlight.
- Place the control box near the socket.

- Unscrew the protective cap (see figure ➊).
- Connect the floating cable to the control box and lock it in place by turning the ring only in the clockwise direction (to prevent damage to the floating cable) (see figure ➋, ➌).
- Make sure that the connector is fully pushed in so that no water can get in (see figure ➍).
- Connect the power cord (see figure ➎). Only connect the control box to a power outlet protected by a 30 mA maximum residual current device (**if in doubt contact a qualified technician**).



Tip: positioning the unit for better operation

Place the control box halfway along the length of the pool, in accordance with the safety conditions relating to the electrical connection.

▶ 3.5 I Starting the cleaning cycle


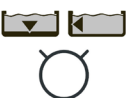


To prevent all risks of injury or equipment damage, comply with the following directives:

- Bathing is prohibited when the appliance is in the pool.
- Do not use the appliance during shock chlorination.
- Do not leave the appliance unattended for an extended period.
- Do not use the appliance if the roller shutter is closed.

EN

3.5.1 Launching the cleaning cycle

- Press and release , the LED lights up.
- The appliance starts the cleaning cycle in "floor only" or "floor + walls" mode (depending on the model).
- Press and release  to select the "floor only" or "floor + walls" mode (depending on the model).

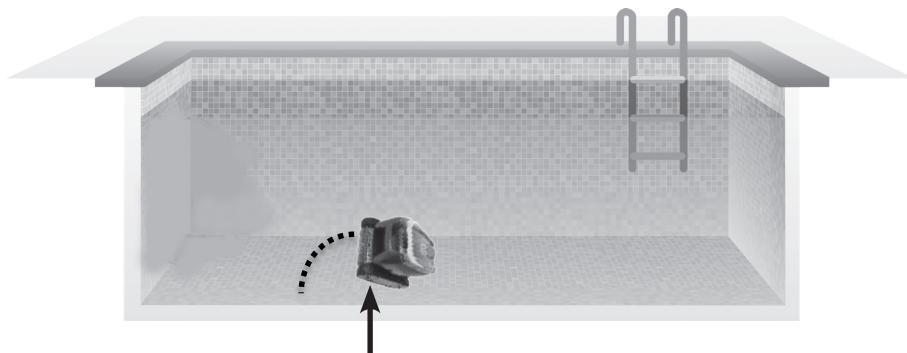


Tip to improve cleaning performance

Regular use of the cleaner (without exceeding 3 cycles per week) means that your pool will always be clean and the filter less clogged.

3.5.2 The cleaner rears up during certain rotations

- The more grip on the surface of the lining, the more the robot will tend to rear up.



➤ 3.6 I Ending the cleaning cycle

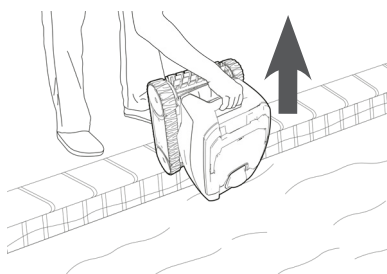


- To prevent damage to the equipment:

- Do not pull on the cable to remove the appliance from the pool. Use the handle.
- Do not leave the appliance to dry out in sunlight after use.
- Store all the elements away from sunlight, humidity and bad weather.
- Screw the protective cap back on if you unplug the control box power cord.

- Once the cycle is complete, the appliance stops and the LED on the control box switches off.
- To stop the appliance during cleaning, press ; the LED goes out.
- Carefully pull on the floating cable to bring the robot to the edge of the pool.
- When the cleaner is within arm's reach, pick it up by the handle and lift it gently out of the pool so that the water it contains drains into the pool (see figure 1).
- Place the cleaner on the ground or vertically at the location provided on the caddy (available as an optional extra) for it to dry out quickly. Then store it with the control box away from sunlight and any splashes.

1



Tip to prevent the floating cable from becoming tangled

The appliance's behaviour is strongly impacted by the tangling of the cable. A cable that is correctly untangled will guarantee better coverage of the pool.

- Untangle the cable and lay it out in the sun so that it returns to its original shape.
- Then wind it up carefully and place it on the caddy handle (available as an optional extra) or on a fixed support.



4 Maintenance



To avoid serious injury:

- Disconnect the cleaner from the power supply.

4.1 I Cleaning the cleaner

- The appliance must be cleaned regularly using clean or slightly soapy water. Do not use solvents.
- Rinse the appliance thoroughly with clean water.
- Do not let your appliance dry in the sun by the pool.



Tip: replace the filter and the brush every 2 years

You are encouraged to change the filter and the brush every 2 years to preserve the integrity of the appliance and guarantee optimum performance.

4.2 I Cleaning the filter



- The cleaner's performance may be reduced if the filter is full or dirty.
- Clean the filter regularly with clean water for efficient pool cleaning.
- If the filter is clogged, clean it with an acidic solution (spirit vinegar, for example). It is recommended that you do this at least once a year, since the filter will clog if not used for several months (winterising period).

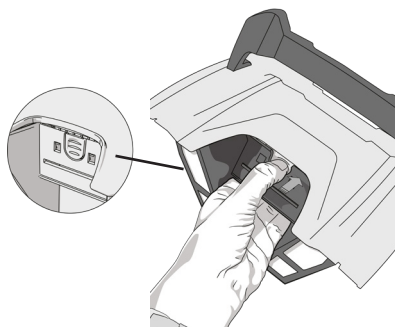
1



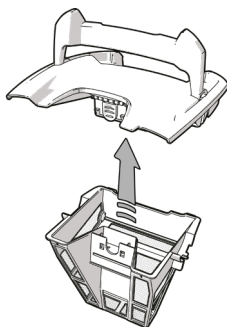
2



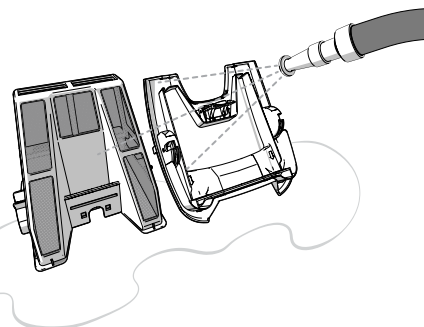
3



4



5



Tip: If the filter is clogged

Clean the filter with an acidic solution (such as spirit vinegar) at least once a year. The filter may clog if not used for several months (winterising period).

➤ 4.3 I Cleaning the propeller

To avoid serious injury:



- Disconnect the cleaner from the power supply.

- Wear gloves when handling the propeller



- Remove the filter using the handle (see figure ➊).
- Remove the external flow guide by lifting it so as to clear the clips (see figure ➋).
- Upon first removal, you will notice that the internal flow guide is securely tightened, which is why we recommend inserting a screwdriver into the holes to loosen it by turning the screwdriver in the anti-clockwise direction (see figure ➌).
- Once the internal flow guide has been loosened, unscrew it by hand (see figure ➍).
- Remove the internal flow guide (see figure ➎).
- Put on a pair of gloves and pull the propeller, holding it firmly to take it out (see figure ➏).
- Remove any debris (leaves, stones, etc.) which may be blocking the propeller (see figure ➐).

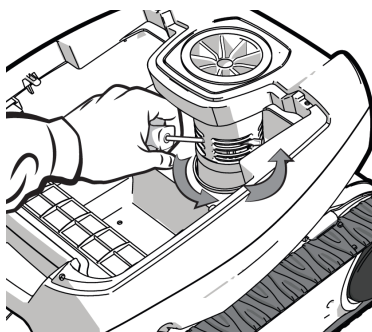
➊



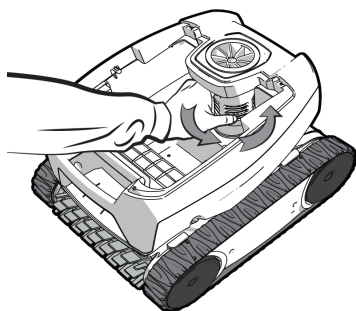
➋



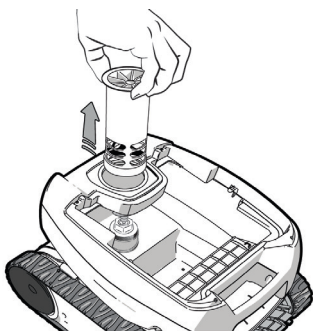
➌



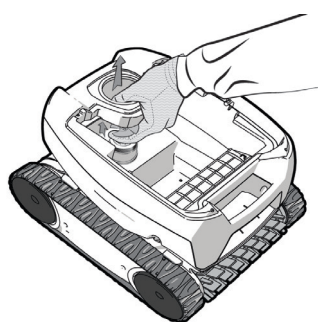
➍



➎



➏



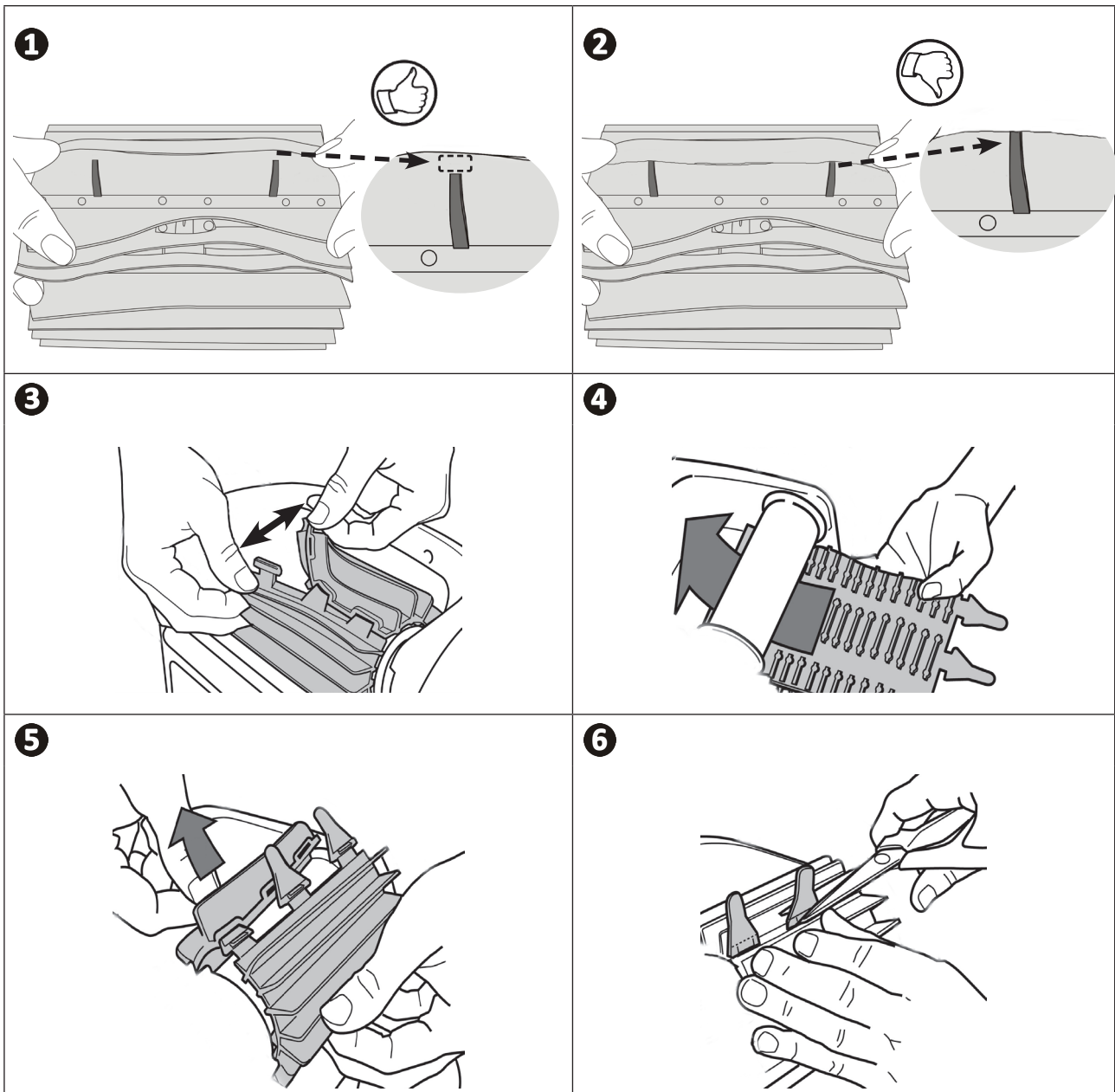
➐



➤ 4.4 I Replacing the brush

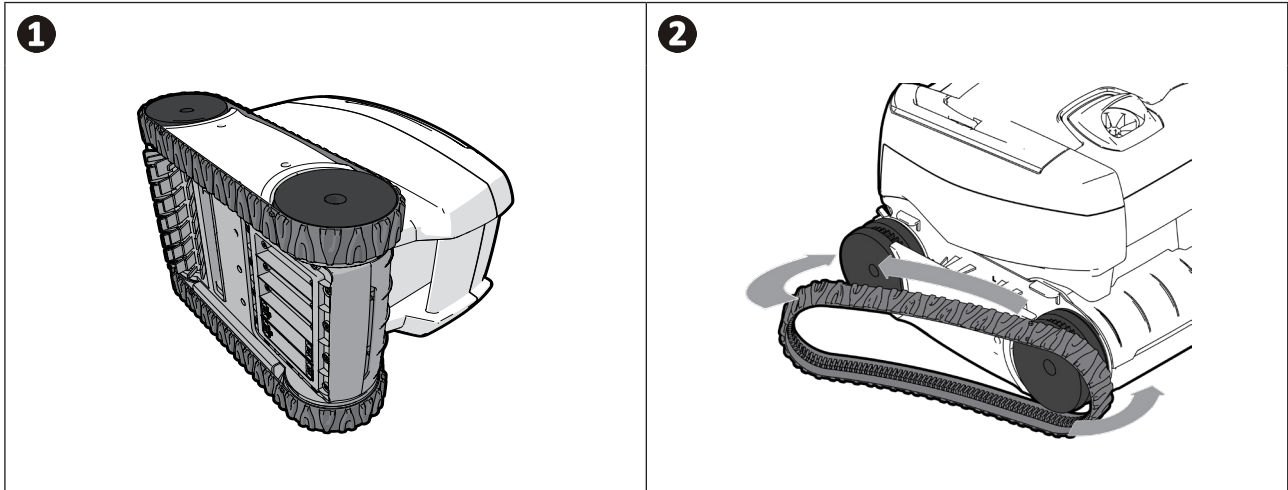
- The brush is equipped with wear indicators; the distance between the indicators and the end of the brush indicates whether the brush is in good condition (see figure ➊).
- The brush is worn and should be replaced when the wear indicators appear as shown in figure ➋.
- To remove the worn brush, remove the tabs from the holes in which they are fixed (see figure ➌).
- To fit the new brush, start by fitting the side without tabs under the brush holder (see figure ➍).
- Roll the brush around its support, slide the tabs into the attachment holes and pull on the end of each tab until its edge passes through the slit (see figure ➎).
- Cut the tabs using a pair of scissors for them to be below flap level (see figure ➏).

EN



➤ 4.5 I Replacing the tracks


- Place the cleaner on its side (see figure **1**).
- Starting with one of the wheels, pull the inside of the track to separate it from the wheel (see figure **2**). Then remove the track from the cleaner.
- To install the new track, position the inside of the track on the first wheel's grooves.
- Stretch the track around the second wheel. Press down on the track to position it correctly on the wheel grooves.
- Make sure that the track passes under the guides (if the model includes track guides).










5 Troubleshooting




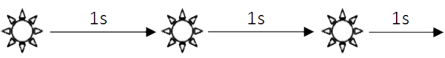

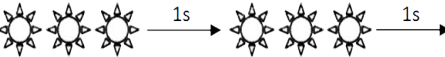
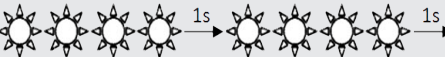
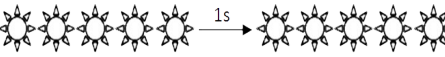
- If a problem occurs, before you contact your retailer, please carry out these few simple checks using the following tables.
- If the problem persists, contact your retailer.
-  : Actions to be performed by a qualified technician only

EN

5.1 I Appliance behaviour

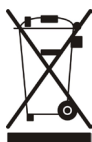
When the cleaner moves forward in a straight line, it is no longer flat on the floor. (To run on the pool floor, it is normal for the front of the cleaner to rise)	<ul style="list-style-type: none"> • There is still air in the appliance's casing. Repeat the cleaner immersion operations (see § "3.3 Immersing the cleaner"). • The filter is full or dirty: simply clean it. • The propeller is damaged, contact your retailer 
The cleaner does not or no longer climbs the pool sides as it originally did. (Its electronic programme means that the cleaner does not systematically climb the walls).	<ul style="list-style-type: none"> • The filter is full or dirty: simply clean it. • The filter is clogged: clean it with an acidic solution (spirit vinegar, for example), or replace it where necessary. • Even though the water seems clear, microscopic algae are present in your pool, they are not visible to the naked eye, and they make the sides slippery and prevent the cleaner from climbing. Carry out shock chlorination and slightly reduce the pH. Do not leave the cleaner in the water during shock treatment. <p>If the problem continues contact your retailer </p>
The cleaner does not move on start-up.	<ul style="list-style-type: none"> • Check that the outlet to which the control box is connected is receiving a power supply. • Check that the cleaning cycle has been launched and that the light is on. <p>If the problem continues contact your retailer </p>
The cable gets tangled The cleaner doesn't clean the entire pool The cleaner's discharge nozzles become blocked	<ul style="list-style-type: none"> • Check that you place as much of the floating cable as possible in the water. • Stop the filter pump and begin a new cleaning cycle. • Place the control box halfway along the length of the pool, in accordance with the safety conditions, see "3.4 I Electricity supply connections". If cleaning is not optimal, vary the location of the control box and the place at which the cleaner enters the pool.
The control box does not respond to any button presses.	<ul style="list-style-type: none"> • Unplug the cable from the mains socket, wait 10 seconds and plug it back in again.
The robot does not tilt upwards to climb the walls	<ul style="list-style-type: none"> • The brush is worn: check the wear indicators "4.4 I Replacing the brush" and that the brush is properly attached to its brush support. Replace the brush where necessary. • The pool is tiled with a right angle between the floor and the walls: the brush may require adaptation to optimise cleaning: contact your retailer 
The cleaner climbs the walls slowly and stops under the water line The cleaner climbs the walls quickly and goes past the water line, aspirating air	<ul style="list-style-type: none"> • The cleaner may behave differently depending on the lining of the pool. A parameter may require changing. To do this, contact your retailer 

5.2 I User alerts

Flashing LED: 	Solutions
	<ul style="list-style-type: none"> Check that the cleaner is correctly connected to the control box. If necessary, unplug it and reconnect it following the appropriate procedure.
	<ul style="list-style-type: none"> Check that there is nothing preventing the brush and support from turning. To do so, remove the tracks and manually rotate the wheels to check that there are no external elements jammed in a housing.
	<ul style="list-style-type: none"> Cleaner operating outside the pool. Make sure you start the cleaner when it is in the water (see § "3.3 Immersing the cleaner"). Check that there are no stones or hair in the propeller (see § "4.3 I Cleaning the propeller"). Clean or change the filter if necessary.
	<ul style="list-style-type: none"> Temperature too high in the control box: <ul style="list-style-type: none"> - Preferably install the box in a shaded location. - Allow the box to cool before starting a new cycle. General cleaner surge current. Check the solutions for flashing indicators No. 2 and No. 3.
	<ul style="list-style-type: none"> The cleaner may be stuck in one area of the pool. Re-start a cycle or check the solutions for the flashing indicator No. 2.



Tip: if you require assistance, inform your retailer about the appliance's condition to save time
Provide this information to your retailer



Recycling

This symbol means that your appliance must not be thrown into a normal bin. It will be selectively collected for the purpose of reuse, recycling or transformation. If it contains any substances that may be harmful to the environment, these will be eliminated or neutralised.
Contact your retailer for recycling information.

Votre revendeur
Your retailer

Modèle appareil
Appliance model

Numéro de série
Serial number

Pour plus d'informations, enregistrement produit et support client :
For more information, product registration and customer support:

www.zodiac.com

