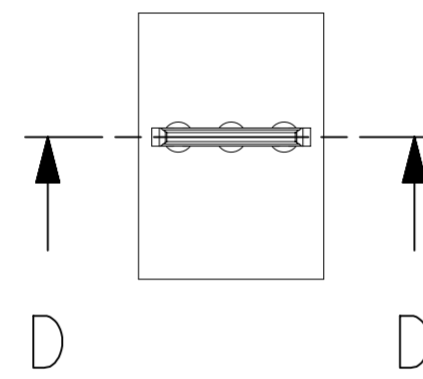
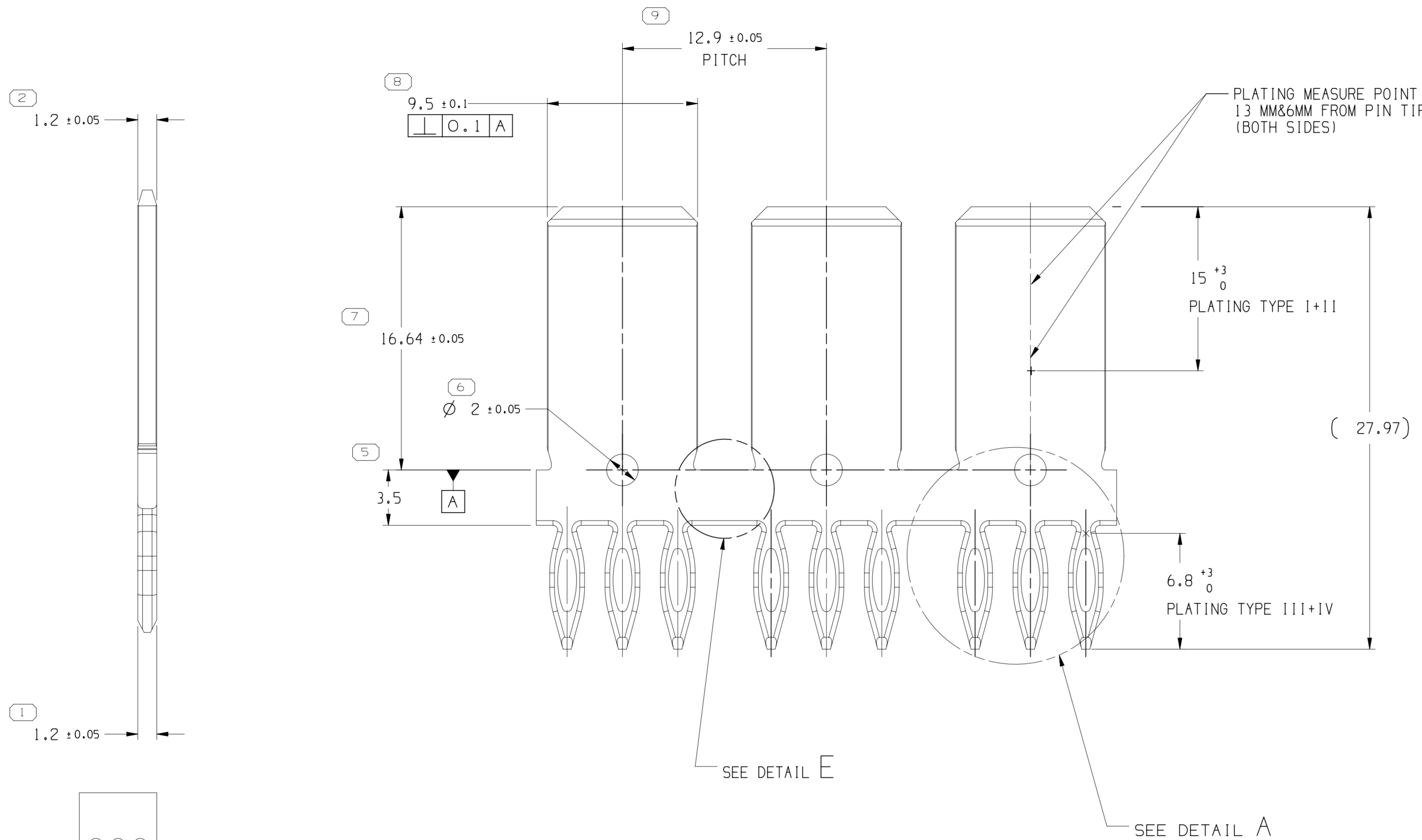
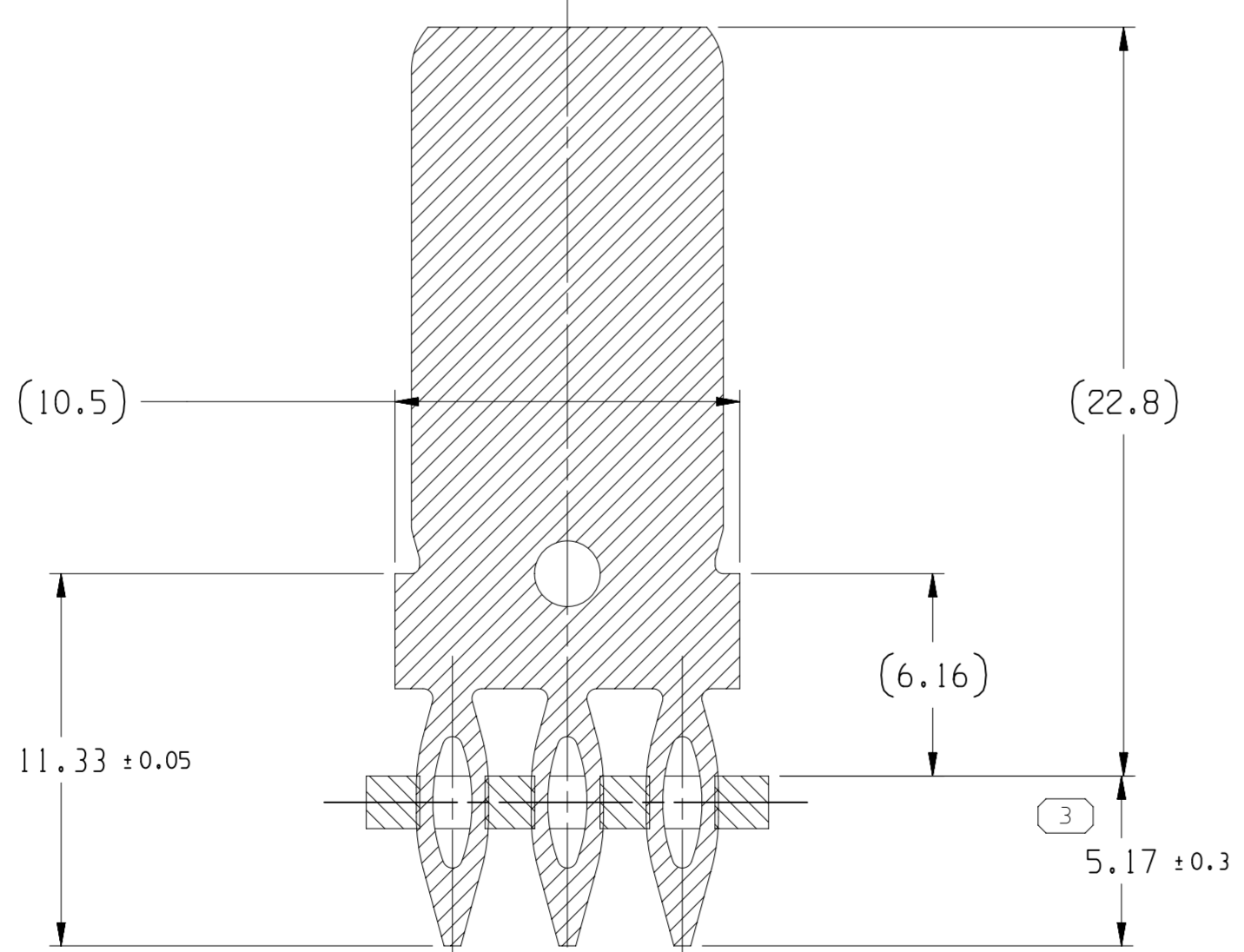
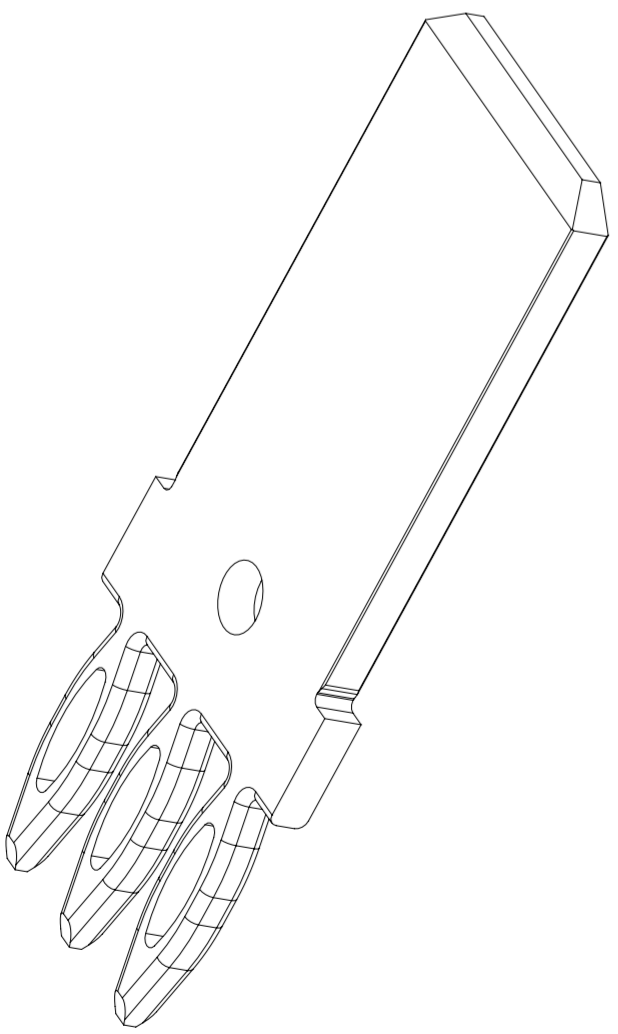


UNWARP DIRECTION

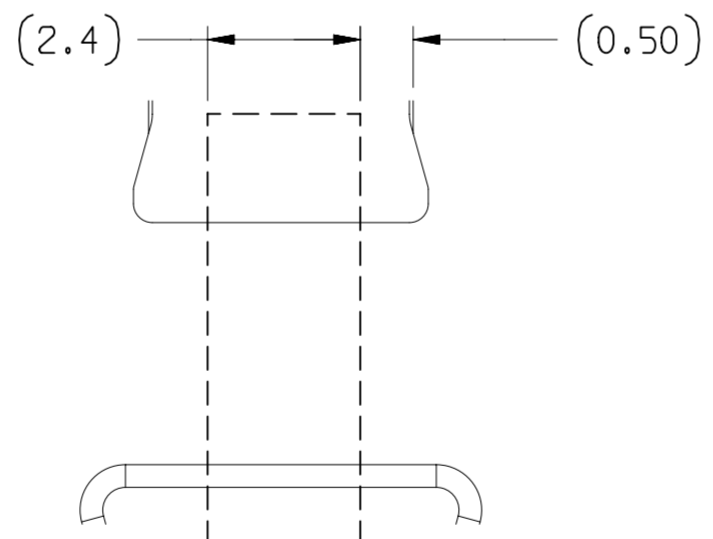


D

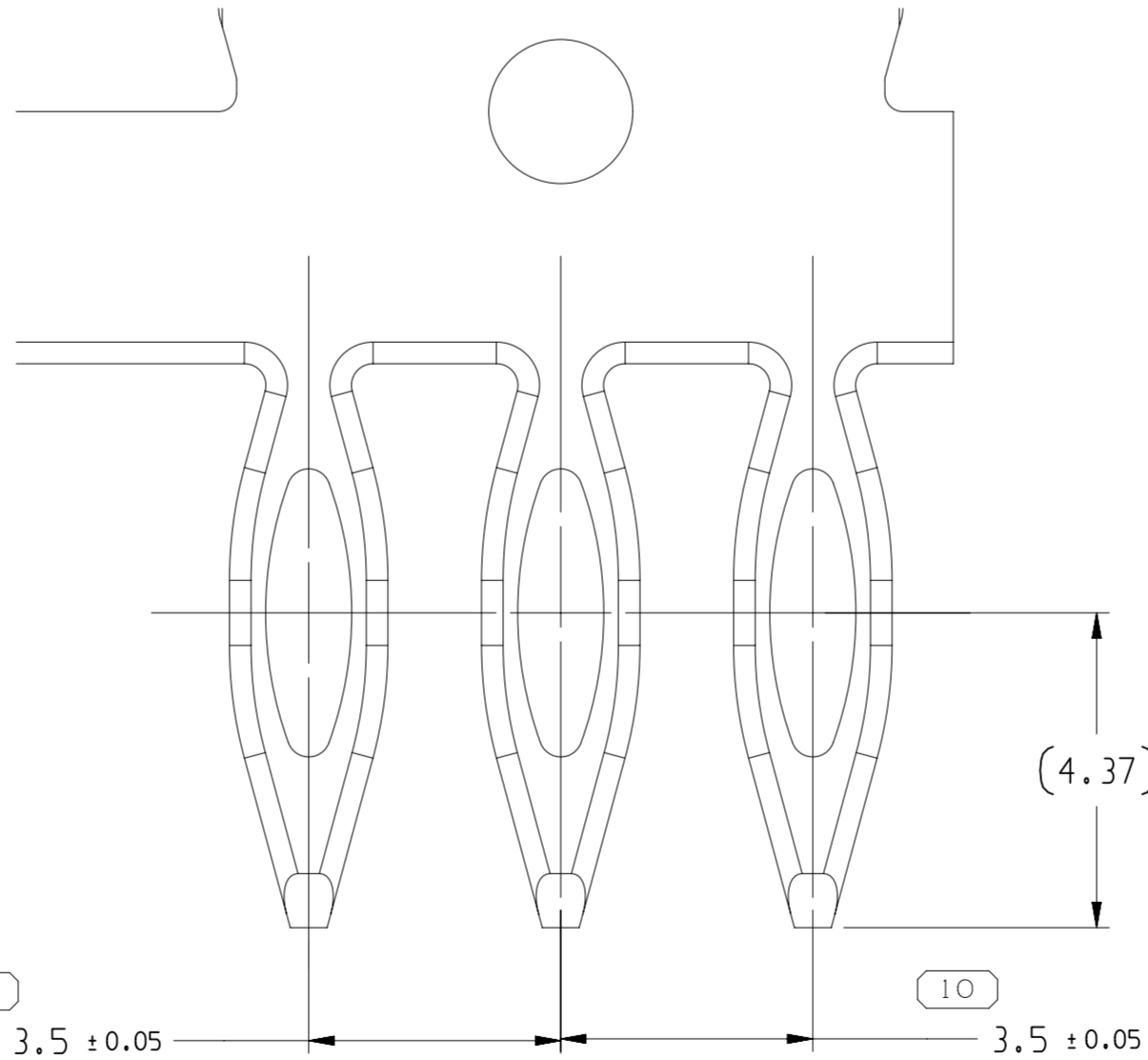
D



SECTION D-D



DETAIL E  
SCALE 10:1



DETAIL A  
SCALE 10:1

| SYMBOL DEFINITION                                                                                                                          |                                  |    |
|--------------------------------------------------------------------------------------------------------------------------------------------|----------------------------------|----|
| A DIMENSION WITHOUT AN INSPECTION REPORT SYMBOL ( ) DOES NOT REQUIRE INSPECTION. IT MAY BE CONTROLLED ON THE INDIVIDUAL COMPONENT DRAWING. | TOTAL NO OF INSPECTIONS REQUIRED | 11 |
|                                                                                                                                            | LAST NO. USED                    | 11 |

| MISSING SYMBOLS          |  |
|--------------------------|--|
| NO MISSING SYMBOL NUMBER |  |

| DWG STATUS |     |     |     | ZONE |  | REVISION HISTORY |                 |  | AUTH   |     | DR  |     | APVD |  |
|------------|-----|-----|-----|------|--|------------------|-----------------|--|--------|-----|-----|-----|------|--|
| DATE       | STG | REV | N/P | CHG  |  |                  |                 |  |        |     |     |     |      |  |
| 01DE22     | R   | 01  | -   | -    |  |                  | INITIAL RELEASE |  | 448705 | WBL | YFC | WBL |      |  |

NOTES:

1. UNLESS OTHERWISE SPECIFIED AND/OR INDICATED: DIMENSIONS ARE TO FACE OF VIEW SHOWN AND AUTOMATICALLY ROUNDED BY COMPUTER FOR INSPECTION (SEE MATH MODEL FOR PRECISE DIMENSINOS). FOR ALL OTHER DIMENSIONS NOT SHOWN BUT REQUIRED FOR TOOL BUILD, SEE MATH FOR PRECISE TOOL PATH DATA.

2. BURRS AND SLIVERS PERMISSIBLE ONLY WITHIN CONFINES OF THE CARRIER FEATURE. MAX BURR TO BE 20% OF STAMPED MATERIAL THICKNESS, ENDS OF TERMINAL MUST BE FREE OF BURRS.

PLATING NOTES:

- AFTER TERMINAL IS FORMED, PLATING EACH TERMINAL AS SPECIFIED IN THE CHART AS FOLLOW:  
DETAILD TECHNICAL REQUIREMENT OF FOLLOWS"  
EAAW\_4-2\_PE-CS\_09-06\_EN R01  
COMPONENTS GENERAL SPECIFICATION FOR CS STAMPING  
PARTS OF PIN HEADER & MEPA"

NICKEL PLATING OVERALL UNLESS SPECIFIED.

- I. UNDER PLATING - 0.001 TO 0.002 MM THICK NICKEL

- II. TOP PLATING - 0.001-0.003 MM SILVER

- III. UNDER PLATING - 0.001 TO 0.003 MM THICK NICKEL

- IV. TOP PLATING - 0.0003-0.0011 MM THICK MATTE TIN

CLEANLINESS REQUIREMENTS:

1. INCOMING PART CLEANLINESS  
PINS TO BE CLEAN AND FREE OF OILS, LUBRICANTS, MOLD RELEASE PROCESSING  
CHEMICALS AND RESIDUES. THE ABSENCE OF SULPHUR AND AMINES MUST BE DETERMINED BY FTIR AND/OR SEM.
2. TERMINALS MUST BE CLEAN AND FREE OF ANY MANUFACTURING DEBRIS OR RESIDUE.

PACKAGING NOTES:

1. TERMINALS MUST BE SINGLE WRAPPED  
ON REEL WITH PAPER INTERLEAF.
2. FULL REEL SHALL NOT EXCEED 30 LBS. IN WEIGHT.
3. PARTS SHALL BE ADAQUATELY PROTECTED FROM ENVIRONMENTAL  
CONDITIONS REELS SHALL BE PLACED IN CLEAN POL YE THYLENE BAGS  
AND SHALL BE BE CLOSED DURING STORAGE AND SHIPMENT  
WITH DESSICANT ENCLOSED.
4. ALL PACKAGING, INCLUDING REELS, BOXES AND/OR TOTES, TO BE  
APPROVED BY APTIV.
5. PLASTIC REEL IS RECOMMENDED TO BE USED.
6. A MAX OF ONE RIVET SPLICES MAY BE USED PER REEL FOR STAMPING

| A. LINE DRAWN THROUGH A PART NUMBER INDICATES THAT PHYSICAL PARTS ARE NOT AVAILABLE FOR ORDERING.                                                                               |            |
|---------------------------------------------------------------------------------------------------------------------------------------------------------------------------------|------------|
| PART NUMBERS THAT DO NOT HAVE A LINE PRESENT INDICATE THAT PHYSICAL PARTS ARE AVAILABLE FOR ORDERING.                                                                           |            |
| CONTACT APTIV SALES TO ASSURE AVAILABILITY OF PARTS.                                                                                                                            |            |
| PART DRAWING                                                                                                                                                                    |            |
| STYLE                                                                                                                                                                           |            |
| VOLUME (CM <sup>3</sup> )                                                                                                                                                       | DISTR CODE |
| UNLESS OTHERWISE SPECIFIED<br>THIS DOCUMENT IS IN ACCORDANCE WITH ASME Y14.5-2009. SEE APTIV ENGINEERING DESIGN STANDARD 86-2017 FOR ISO 1101/2004 RECONCILIATION REQUIREMENTS. |            |
| ALL DIMENSIONS ARE IN MILLIMETERS                                                                                                                                               |            |
| REFERENCE                                                                                                                                                                       |            |
| THIRD ANGLE PROJECTION                                                                                                                                                          |            |
| DO NOT SCALE                                                                                                                                                                    |            |
| USE MATH DATA                                                                                                                                                                   |            |

| • APTIV •                                                                                                                                                                                                                                                                    |            |
|------------------------------------------------------------------------------------------------------------------------------------------------------------------------------------------------------------------------------------------------------------------------------|------------|
| CONNECTION SYSTEMS                                                                                                                                                                                                                                                           |            |
| Copyright © 2022 APTIV. ALL RIGHTS RESERVED.                                                                                                                                                                                                                                 |            |
| THIS DRAWING IS THE PROPERTY OF APTIV AND CONTAINS APTIV CONFIDENTIAL INFORMATION. THE REPRODUCTION, DISTRIBUTION AND UTILIZATION OF THIS DOCUMENT OR ITS RELATED CAD DATA, AS WELL AS COMMUNICATION OF ANY CONTENT TO OTHERS, WITHOUT EXPRESS AUTHORIZATION, IS PROHIBITED. |            |
| DR                                                                                                                                                                                                                                                                           | DATE       |
| APVD1 WENBO LI                                                                                                                                                                                                                                                               | 01DE22     |
| APVD2 YUFENG CHEN                                                                                                                                                                                                                                                            | 01DE22     |
| APVD3 WENBO LI                                                                                                                                                                                                                                                               | 01DE22     |
| APVD4                                                                                                                                                                                                                                                                        |            |
| APVD5                                                                                                                                                                                                                                                                        |            |
| SUBSTANCES OF CONCERN AND RECYCLED CONTENT 10949001 10949001                                                                                                                                                                                                                 |            |
| MATERIAL SEE CHART                                                                                                                                                                                                                                                           |            |
| DRAWING NAME TAXI TERM M 9.5 N/A                                                                                                                                                                                                                                             |            |
| DRAWING NUMBER 35714995                                                                                                                                                                                                                                                      |            |
| SIZE A2x3                                                                                                                                                                                                                                                                    | SCALE 5:1  |
| FRAME NO 2                                                                                                                                                                                                                                                                   | SHEET NO 1 |
| STG 1                                                                                                                                                                                                                                                                        | REV 01     |
| N/P -                                                                                                                                                                                                                                                                        |            |

| DRAWING NUMBER |           |            |            |       |        |       |  |  |  |
|----------------|-----------|------------|------------|-------|--------|-------|--|--|--|
| 35714995       |           |            |            |       |        |       |  |  |  |
| SIZE A2x3      | SCALE 5:1 | FRAME NO 2 | SHEET NO 1 | STG 1 | REV 01 | N/P - |  |  |  |

|          |     |        |            |              |
|----------|-----|--------|------------|--------------|
| 35714765 | 01  | R      | 35714767   | I+II+III+IV  |
| 35714767 | 01  | R      | C19010     | N/A          |
| P/N      | REV | STATUS | MAT'L SPEC | PLATING TYPE |

|                                      |                      |
|--------------------------------------|----------------------|
| MAX PUSH IN FORCE FOR SINGLE PIN(N)  | 300                  |
| MIN RETENTION FORCE(N) - INITIAL     | 30                   |
| MIN RETENTION FORCE(N) - AFTER AGING | 20                   |
| PCB MATERIAL                         | FR-4                 |
| PCB THICKNESS                        | ≥1.57MM              |
| FINISHED PTH SIZE                    | 1.99MM-2.09MM        |
| PTH PLATING TYPES                    | IMMERSION TIN OR OSP |

| PROCESS SENSITIVE DIMENSION                                                                      |         |
|--------------------------------------------------------------------------------------------------|---------|
| DIMENSIONS ENCLOSED IN ( ) INDICATE REFERENCE DIMENSIONS AND NO TOLERANCE LIMITS ARE ESTABLISHED |         |
| DIMENSIONAL RANGE (MM)                                                                           | CHART D |
| FROM 0 TO 12                                                                                     | >12     |
| TOLERANCE UNLESS OTHERWISE SPECIFIED                                                             |         |
| ±0.1                                                                                             | ±0.2    |
| ANGULAR TOLERANCE 12°                                                                            |         |

20641723