
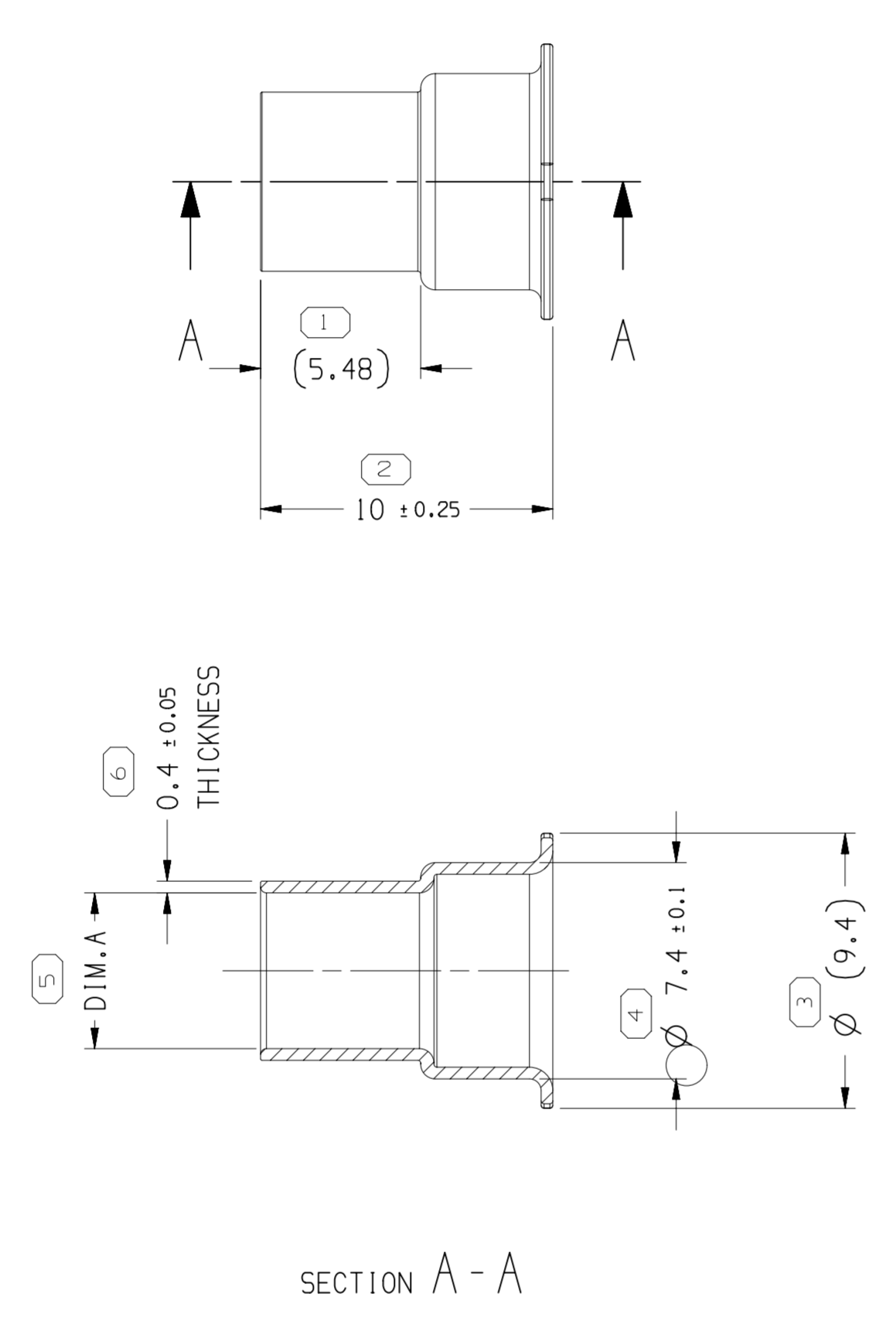
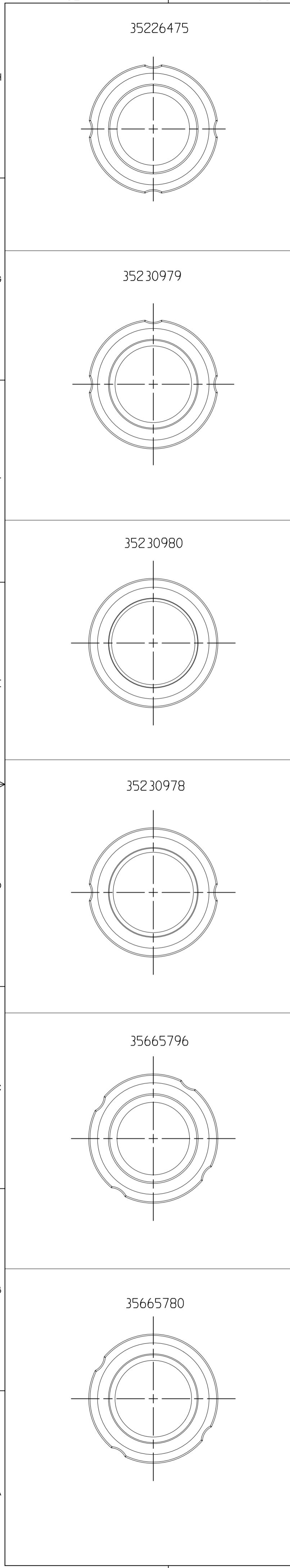


SYMBOL DEFINITION	
A DIMENSION WITHOUT AN INSPECTION REPORT SYMBOL  DOES NOT REQUIRE INSPECTION. IT MAY BE CONTROLLED ON THE INDIVIDUAL COMPONENT DRAWING.	TOTAL NO OF INSPECTIONS REQUIRED
	6
	LAST NO. USED
	6

MISSING SYMBOLS		DWG STATUS				ZONE	REVISION HISTORY				AUTH	DR	APVD 1	APVD 2
NO MISSING SYMBOL NUMBER		DATE	STG	REV	N/P	CHG								
		23SE19	R	01	-	-				CREATED PART DRAWING	444580	WZM	TY	WZM
		16DE19	R	02	-	-				UPDATED ATTRIBUTE	444947	WZM	TY	WZM
		09AU22	R	03	-	-	A8			ADDED PART NUMBERS- 35665796 & 35665780	447992	VA	DY	TY



- NOTES:
- UNLESS OTHERWISE SPECIFIED AND/OR INDICATED: DIMENSIONS ARE TO FACE OF VIEW SHOWN AND AUTOMATICALLY ROUNDED BY COMPUTER FOR INSPECTION (SEE MATH MODEL FOR PRECISE DIMENSIONS). FOR ALL OTHER DIMENSIONS NOT SHOWN BUT REQUIRED FOR TOOL BUILD, SEE MATH MODEL FOR PRECISE TOOL PATH DATA.
 - THIS PART USED IN ASSEMBLY DRAWING: 35214364.
 - PLATING:
 UNDERPLATE: THICKNESS OF NICKEL SHALL BE 1.5µm - 4µm PER ASTM B-689, TYPE 1, CLASS X.
 OVERPLATE: THICKNESS OF SILVER SHALL BE 3µm-6µm PER ASTM B-700, TYPE 3, GRADE B, CLASS N, ANTI TARNISH TREATMENT PER DELPHI M5815 SPECIFICATION REQUIREMENTS. ANY COATING BRAND OTHER THAN EVABRITE MUST BE APPROVED BY APTIV.
 - PART MUST BE FREE OF MICRO CRACK, BURRS, SHARP EDGE, OIL, GREASE OR OTHER CONTAMINANTS.
 - ALL DIMENSIONS ARE AFTER PLATING.
 - COMPONENTS MUST BE PACKAGED IN A SEALED BAG.

PART NO	REV	MATERIAL	DIM. -A	PLATING	CABEL SIZE	VOLUME CM ³
35665780	01	COPPER	∅ 5.63±0.1	SILVER	M6488 4mm ²	0.092
35665796	01	COPPER	∅ 5.33±0.1	SILVER	M6488 3mm ²	0.091
35230978	01	COPPER	∅ 5.90±0.1	SILVER	JAS0 3mm ²	0.093
35230980	01	COPPER	∅ 6.13±0.1	SILVER	M6488 5mm ²	0.094
35230979	02	COPPER	∅ 5.63±0.1	SILVER	M6488 4mm ²	0.092
35226475	01	COPPER	∅ 5.33±0.1	SILVER	M6488 3mm ²	0.091

AB
AB

DIMENSIONAL RANGE (MM)		CHART M	
FROM	TO	FROM	TO
> 0	> 6	> 70	> 120
> 6	> 30	> 120	> 160
> 30	> 70	> 160	> 200
> 70	> 120	> 200	> 250
> 120	> 160	> 250	> 315
> 160	> 200	> 315	> 400

TOLERANCE UNLESS OTHERWISE SPECIFIED

±0.1	±0.2	±0.3	±0.4	±0.45	±0.55	±0.7	±0.85	±1.05
------	------	------	------	-------	-------	------	-------	-------

ANGULAR TOLERANCE ±1°

LINE DRAWN THROUGH A PART NUMBER INDICATES THAT PHYSICAL PARTS ARE NOT AVAILABLE FOR ORDERING.

PART NUMBERS THAT DO NOT HAVE A LINE PRESENT INDICATE THAT PHYSICAL PARTS ARE AVAILABLE FOR ORDERING.

CONTACT APTIV SALES TO ASSURE AVAILABILITY OF PARTS.

DWG TYPE: PART DRAWING

STYLE: [Symbol]

VOLUME (CM³): [Symbol]

DISTR CODE: D

UNLESS OTHERWISE SPECIFIED THIS DOCUMENT IS IN ACCORDANCE WITH ASME Y14.5-2009. SEE DELPHI ENGINEERING DESIGN STANDARD B6 2017 FOR ISO 1101:2004 RECONCILIATION REQUIREMENTS.

ALL DIMENSIONS ARE IN MILLIMETERS

THIRD ANGLE PROJECTION

DO NOT SCALE

USE MATH DATA

NX

• APTIV •

CONNECTION SYSTEMS
Chennai, India
COPYRIGHT 2019 APTIV. ALL RIGHTS RESERVED.

THIS DRAWING IS THE PROPERTY OF APTIV AND CONTAINS APTIV CONFIDENTIAL INFORMATION. THE REPRODUCTION, DISTRIBUTION AND UTILIZATION OF THIS DOCUMENT OR ITS RELATED CAD MATH DATA, AS WELL AS COMMUNICATION OF ANY CONTENT TO OTHERS, WITHOUT EXPRESS AUTHORIZATION, IS PROHIBITED.

DR	DATE
APVD1 WENZHENG MA	23SE19
APVD2 TIMON YU	23SE19
APVD3 WENZHENG MA	23SE19
APVD4	
APVD5	

SUBSTANCES OF CONCERN AND RECYCLED CONTENT PER APTIV 10949001

MATERIAL SEE CHARTS

DRAWING NAME: TAXI SLEV BUSHING ID= OD=

DRAWING NUMBER: 35242832

SIZE	SCALE	FRAME NO	SHEET NO	STG	REV	N/P
A1	10:1	1 OF 1	1 OF 1	R	03	-