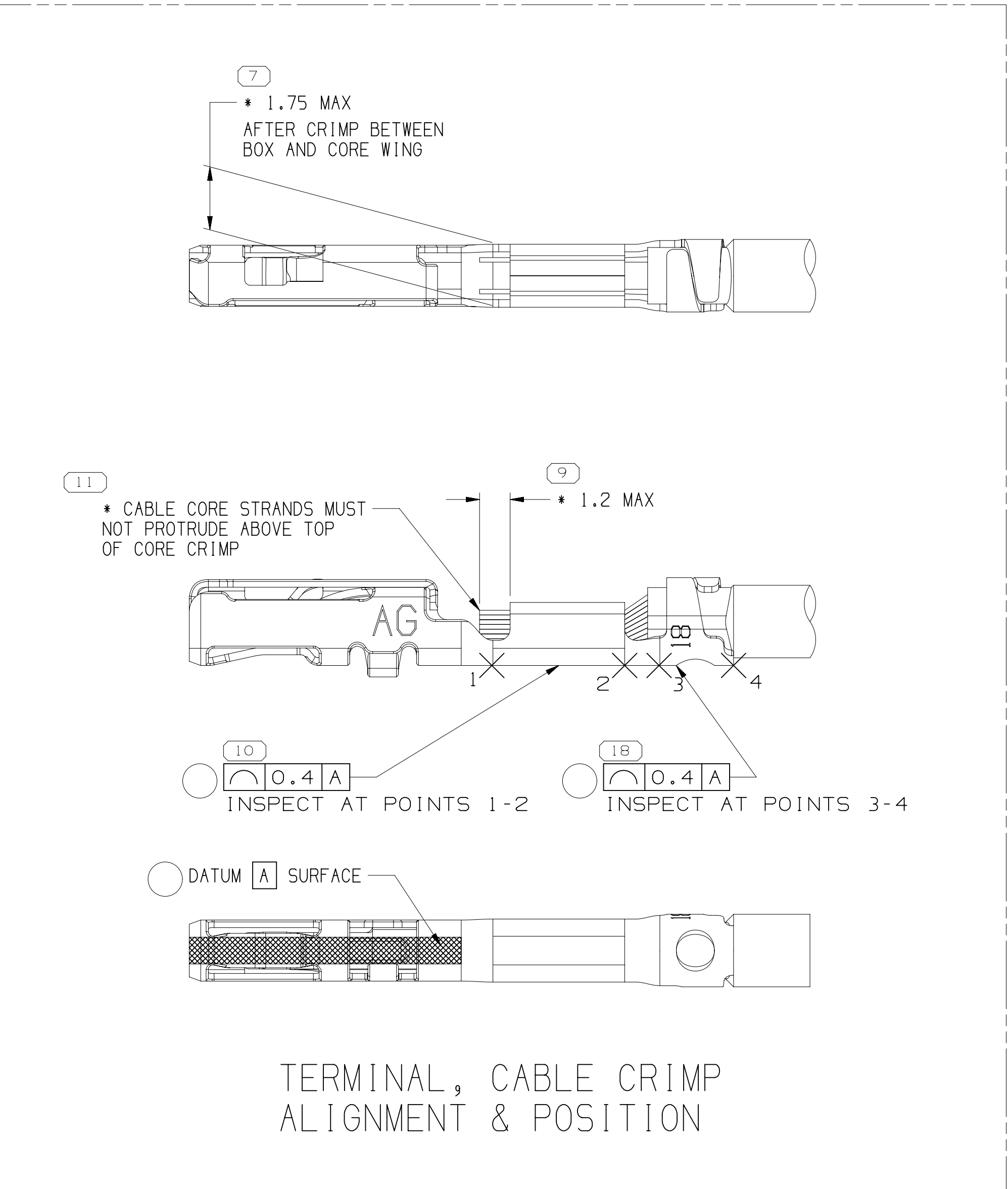
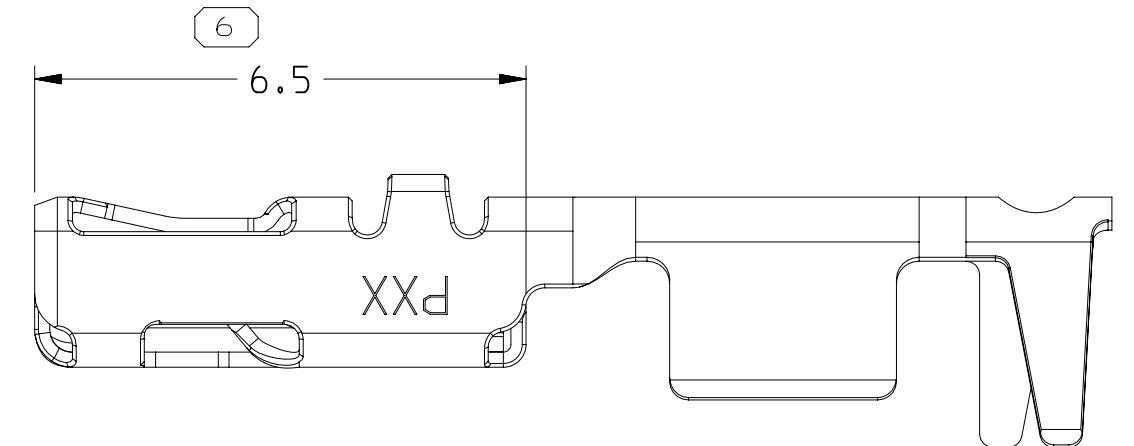
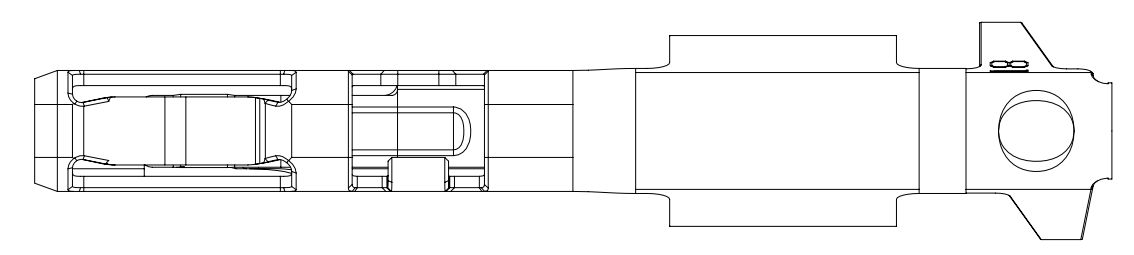
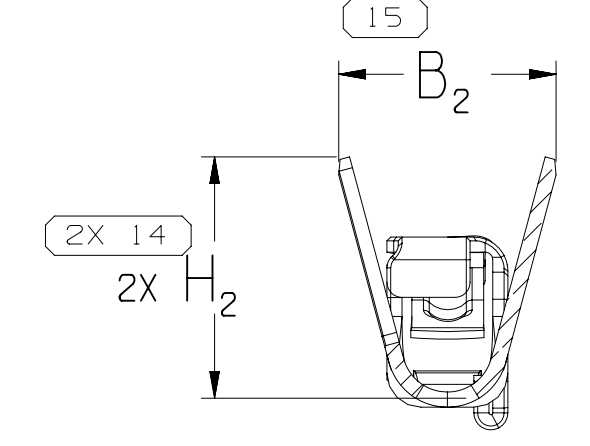
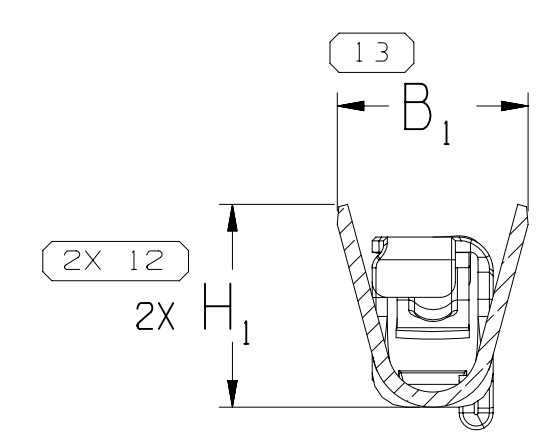
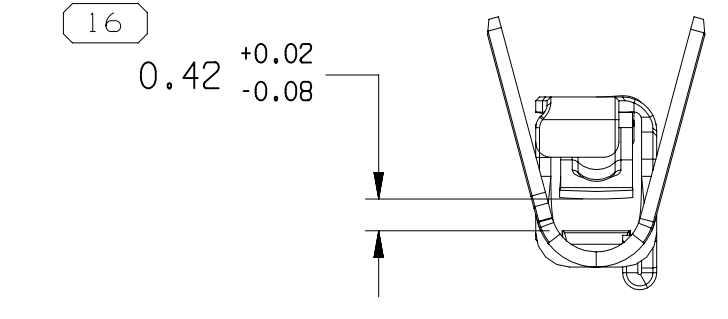
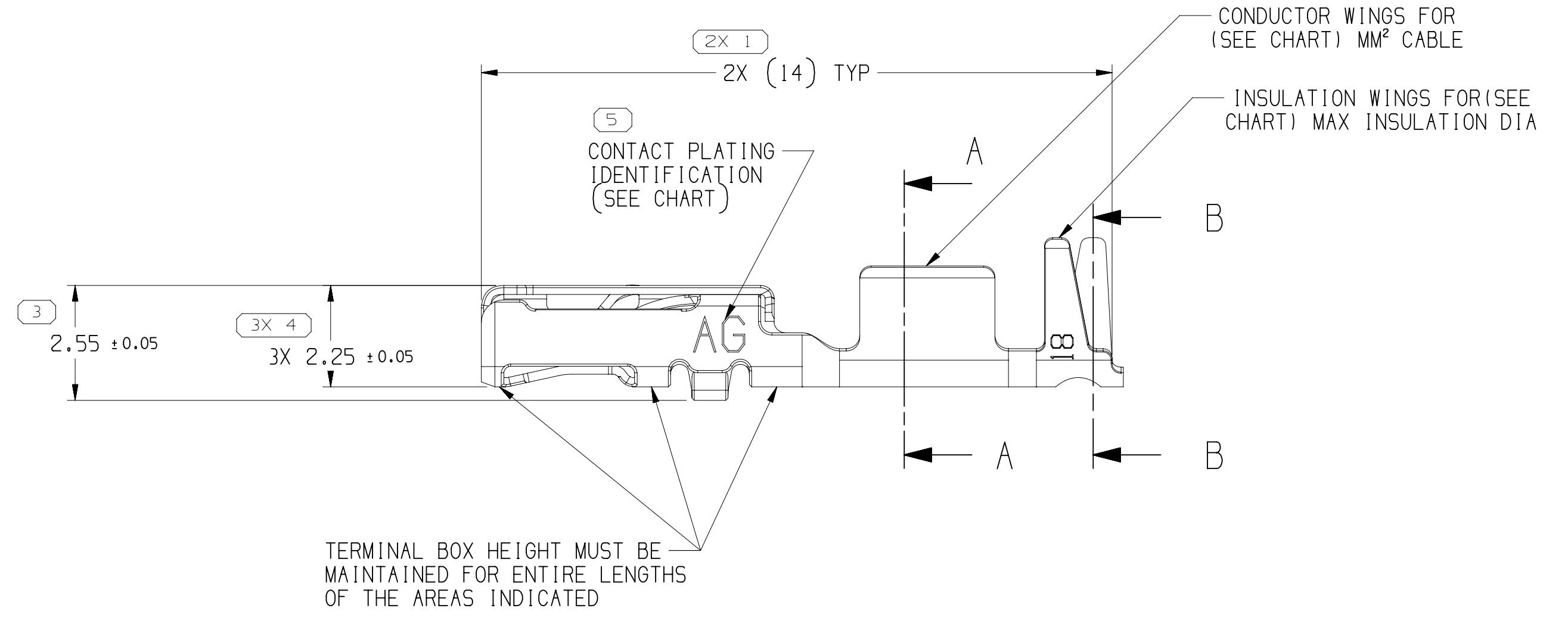
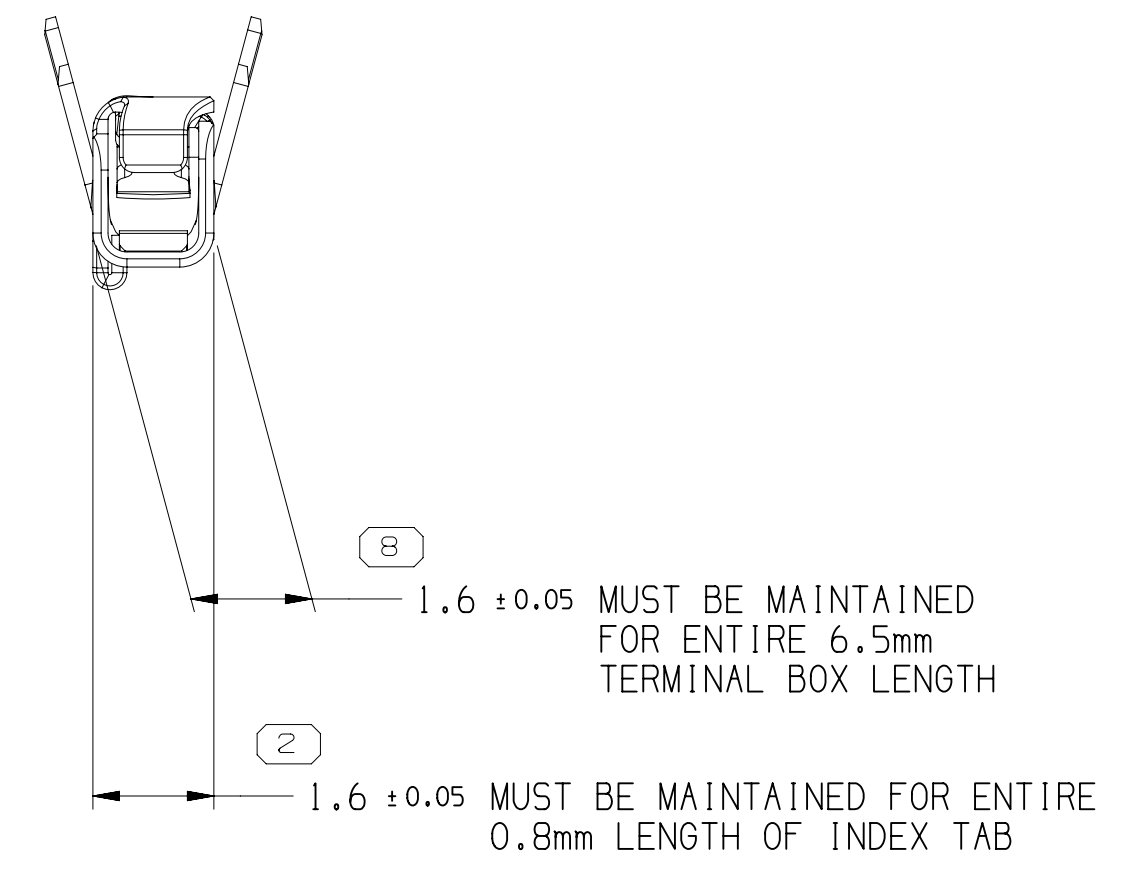
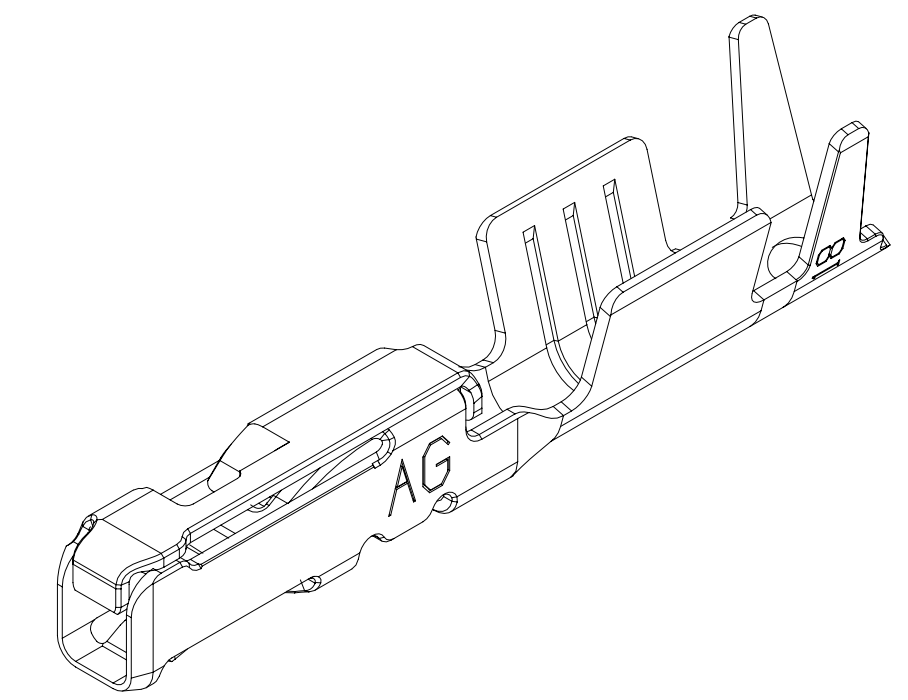
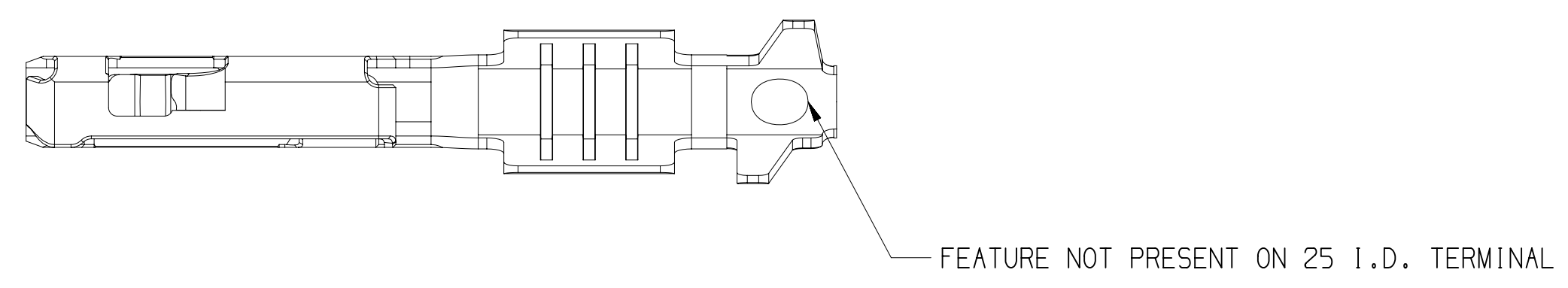


SYMBOL DEFINITION		TOTAL NO OF INSPECTIONS REQUIRED	
A DIMENSION WITHOUT AN INSPECTION REPORT SYMBOL () DOES NOT REQUIRE INSPECTION. IT MAY BE CONTROLLED ON THE INDIVIDUAL COMPONENT DRAWING.		22	
	LAST NO. USED	18	

DWS STATUS		ZONE		REVISION HISTORY		AUTH		DR		APVD	
DATE	STG	REV	N/P	CHG							
19JA12	R	01	-	-	13919112 - WAS PE201747 AND RELEASED 13919113 - WAS PE201748 AND RELEASED 13919114 - WAS PE201749 AND RELEASED	416783	MAL	MAL	RBS		
02MY12	R	02	-	-	ALL PARTS - UPDATED PERFORMANCE REQUIREMENTS NOTE	417979	JEG	JEG	RBS		
04.NI.12	R	03	-	-	ALL PARTS - CONTACT AREA PLATING TYPE COLUMN WAS "11" ON TAXI CHART	418431	JAR	JAR	RBS		
07FE13	R	04	-	-	ALL PARTS - ADDED PLATING NOTE IV AND CRIMP AREA COLUMN IV WAS 1	421380	CGD	JWM	RBS		
11MR13	R	05	-	-	ALL PARTS - UPDATED PLATING TYPE NOTE	421590	CBG	CBG	RBS		
29JL14	R	06	-	-	ALL PARTS - 3X 2.25 ± 0.05 WAS 2.25 ± 0.05, ADDED LABEL ON D'IM #4, MAX INSULATION CRIMP NOTE, REVISED NOTES, NUMBERING, PLATING TYPE & PERFORMANCE REQUIREMENT RATINGS NOTES AND UPDATED CRIMP AREA COLUMN CHART	426685	APB	APB	RBS		
27AU14	R	07	-	-	ALL PARTS - UPDATED PDM ATTRIBUTES	427393	APB	APB	RBS		
21OC14	R	08	-	-	ALL PARTS - UPDATED PART AVAILABILITY, REMOVED DIM #17 AND REVISED MAT'L DESCRIPTION COLUMN CHART	427975	APB	APB	RBS		
23FE15	R	09	-	-	13919113 - 13919114 - REVISED CABLE DIAMETER COLUMN CHART	428888	APB	APB	RBS		
16JL15	R	10	-	-	13919112 - CABLE SIZE WAS 0.8	430190	APB	APB	RDL		
02JL15	R	11	-	-	REVISED TERMINAL LEAD-IN FOR ALL PARTS	430558	JHG	JHG	RBS		
14OC15	R	12	-	-	ALL PARTS - UPDATED PART AVAILABILITY	431036	APB	APB	RBS		
05DE18	R	13	-	-	ALL PARTS - UPDATED MATERIAL SPEC; REV LEVELS ADV TO 03	441787	CM	CM	RS		
11DE18	R	14	-	-	ALL PARTS - CORRECTED TOLERANCE FOR "B2" TO MATCH TOG (1 ± 0.25 WAS ± 0.3)	441895	JGO	JAA	AGH		
05AP19	R	15	-	-	ALL PARTS - DIM #10 WAS 0 ± 2" AND ADDED GDOT PROFILE OF LINE CONTROL FRAME & DATUM [A] OVERALL INFO	441273	DAV	JAA	RBS		



- NOTES
- UNLESS OTHERWISE SPECIFIED AND/OR INDICATED: DIMENSIONS ARE TO FACE OF VIEW SHOWN AND AUTOMATICALLY ROUNDED BY COMPUTER FOR INSPECTION (SEE MATH MODEL FOR PRECISE DIMENSIONS). FOR ALL OTHER DIMENSIONS NOT SHOWN BUT REQUIRED FOR TOOL BUILD, SEE MATH MODEL FOR PRECISE TOOL PATH DATA.
 - RECOMMENDED MATING BLADE THICKNESS 0.64 ± 0.03mm. RECOMMENDED MATING BLADE WIDTH NOT TO EXCEED 1mm AND NO LESS THAN 0.6mm. SEE USCAR EWCAP-001 DRAWING (0.64 PIN) FOR OTHER MATING BLADE REQUIREMENTS.
 - MAX INSULATION CRIMP WIDTH 1.77mm AND HEIGHT 2.3mm FOR CABLE SIZE UP TO 1.9mm O.D. MAX CORE CRIMP WIDTH 1.67mm
 - MAXIMUM CURRENT CAPACITY IS 7.5 AMPS WITH 0.8mm² COPPER CABLE.
 - * DENOTES DIMENSIONS MADE AT CUT-OFF AND CRIMP DIE
 - PARTS MEET THE PERFORMANCE REQUIREMENTS OF GWM3191 DEC 2007 AND SAE/USCAR-2 R5 REVISION FOR THE FOLLOWING CLASSIFICATIONS:
 - TEMPERATURE CLASS 3 (-40° C TO +125° C)
 - VIBRATION CLASS 1 (ON BODY OR CHASSIS)
 - VIBRATION CLASS 2 (ON ENGINE) FOR SAE/USCAR-2 ONLY
 - SEALING CLASS 2 OR 3 (SEALED - CONNECTOR & CABLE SEAL DEPENDENT)
 - DO NOT PROBE, TEST OR OTHERWISE CONTACT THE INTERIOR REGION (THE SPRING OR ANY MOVING PART) OF THIS TERMINAL. SEVERE DAMAGE CAN OCCUR, COMPROMISING THE PERFORMANCE OF THE ELECTRICAL INTERFACE.
 - PLATING TYPE:
 - REFLOW TIN 1.9-3.3 MICROMETERS THICK OVER NICKEL UNDERPLATE 0.13-0.5 MICROMETERS THICK
 - GOLD 0.075-0.127 MICROMETERS THICK OVER PALLADIUM 0.510 - 0.635 MICROMETERS, OVER NICKEL UNDERPLATE 0.127-0.254 MICROMETERS THICK
 - SILVER 2.0 - 3.0 MICROMETERS THICK OVER NICKEL UNDERPLATING 0.13 - 0.51 MICROMETERS THICK.
 - MATTE TIN 1.9-7.0 MICROMETERS THICK OVER NICKEL UNDERPLATING 0.13-0.51 MICROMETERS THICK (FOR USE WITH SELECTIVE SILVER PLATING SPECIFICATION)
 - MATTE TIN 1.9 - 3.75 MICROMETERS THICK OVER NICKEL UNDERPLATING 0.127 - 0.254 MICROMETERS THICK (FOR USE WITH SELECTIVE GOLD PLATING SPECIFICATION)
 - SEE TAXI P/N 13767042 FOR SIMILAR TERMINALS WITH DIFFERENT CONNECTOR CAVITY INDEX.

PART NUMBER	REV	N/P	MATERIAL DESCRIPTION	CONTACT AREA PLATING TYPE (SEE NOTE 8)	CRIMP AREA PLATING TYPE (SEE NOTE 8)	CONTACT PLATING	CONTACT PLATING I.D.	ID	CABLE SIZE (mm ²)	CABLE DIAMETER	B ₁ ± 0.15	B ₂ ± 0.25	(H ₁)	(H ₂)
13919112	03	AB	COPPER ALLOY	III	IV	SILVER	AG	18	0.75 - 0.8	1.7 - 1.9	2.52	2.88	2.68	3.31
13919113	03	AB	COPPER ALLOY	III	IV	SILVER	AG	21	0.35 - 0.5	1.2 - 1.83	2.04	2.8	2.06	3.17
13919114	03	AB	COPPER ALLOY	III	IV	SILVER	AG	25	0.13 - 0.22	0.81 - 1.2	1.54	1.74	1.56	1.77

APTIV
CONNECTION SYSTEMS
WARREN, OH
COPYRIGHT 2012 APTIV. ALL RIGHTS RESERVED.

THIS DRAWING IS THE PROPERTY OF APTIV AND CONTAINS APTIV CONFIDENTIAL INFORMATION. THE REPRODUCTION, DISTRIBUTION AND UTILIZATION OF THIS DOCUMENT OR ITS RELATED CAD DATA, AS WELL AS COMMUNICATION OF ANY CONTENT TO OTHERS, WITHOUT EXPRESS AUTHORIZATION, IS PROHIBITED.

DWS TYPE: PART DRAWING	
STYLE: D	DISTR CODE: D
VOLUME (OPT):	

UNLESS OTHERWISE SPECIFIED THIS DOCUMENT IS IN ACCORDANCE WITH ASME Y14.5M-1994 AS MODIFIED BY THE 0M GLOBAL DIMENSIONING AND TOLERANCING ADDENDUM-2002. SEPARATE PATTERNING OF FEATURES MAY BE ORDERED SEPARATELY REGARDLESS OF DATUM REFERENCES.

ALL DIMENSIONS ARE IN MILLIMETERS

THIRD ANGLE PROJECTION	DO NOT SCALE USE MATH DATA
------------------------	----------------------------

DRAWING NUMBER: TAXI TERM F OCS 0.64 IDR	
13919105	
SIZE: A0	SCALE: 10:1
FRAME NO: 1 OF 1	SHEET NO: 2 OF 1
STG: R	REV: 15