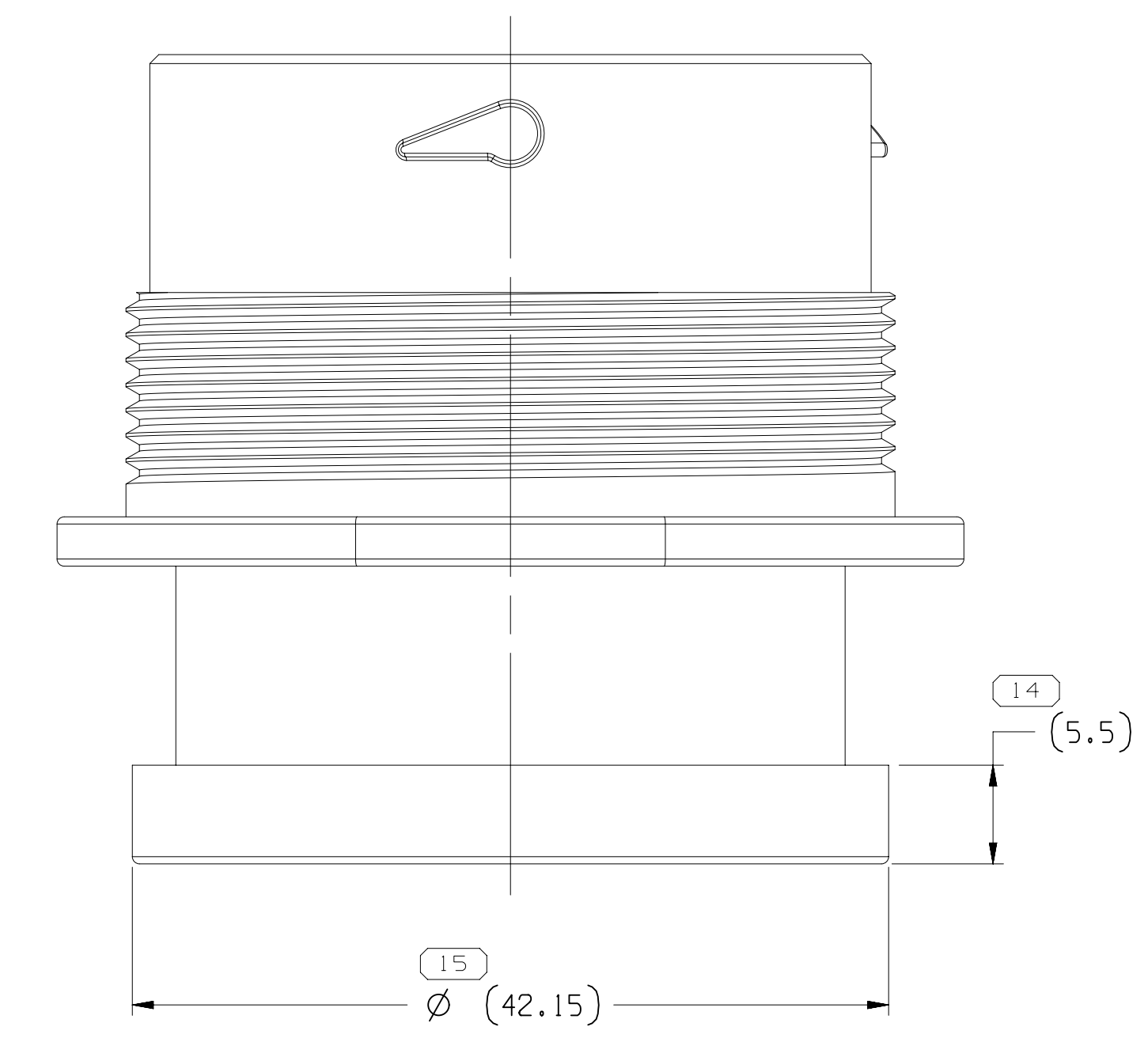
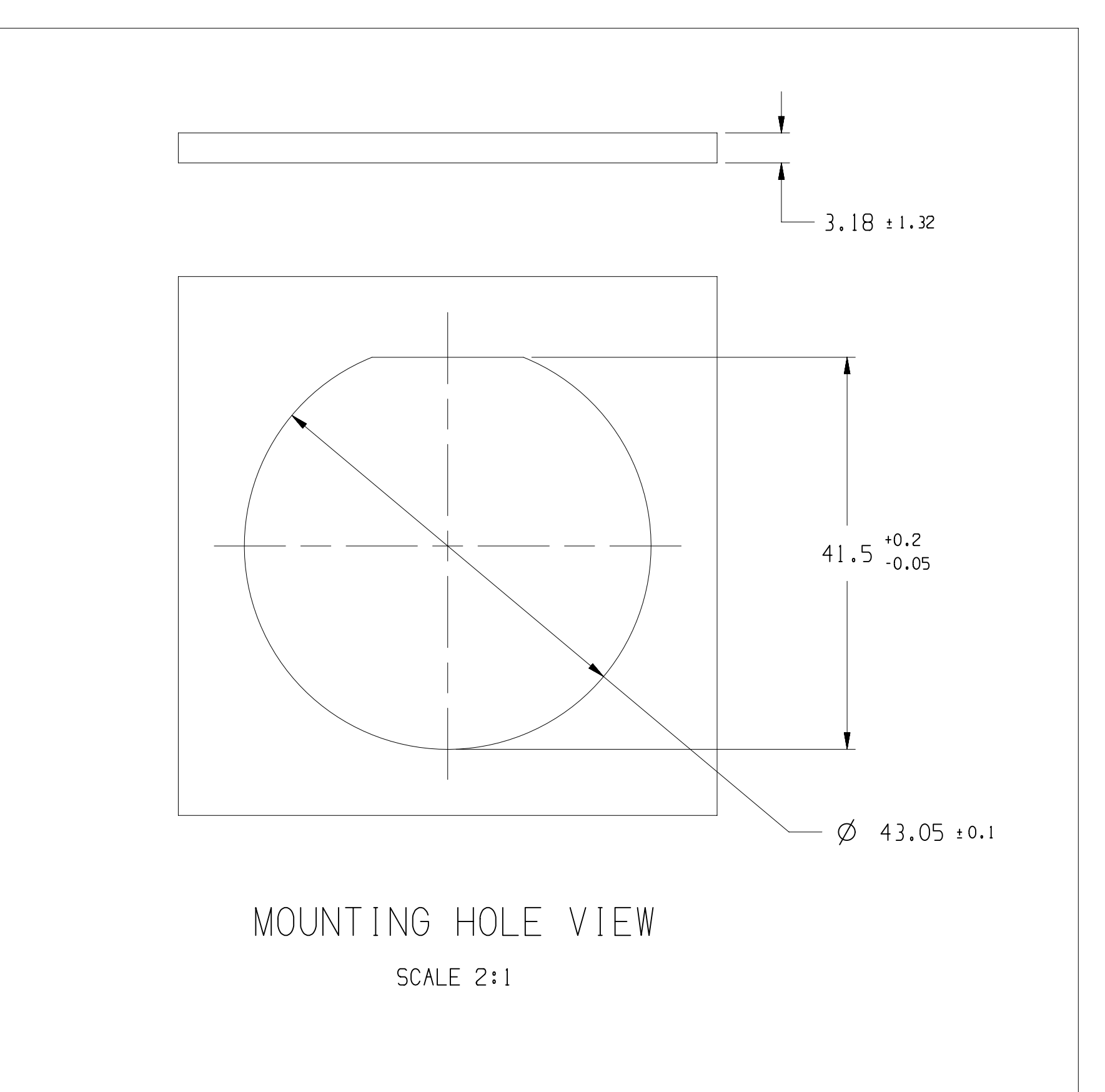
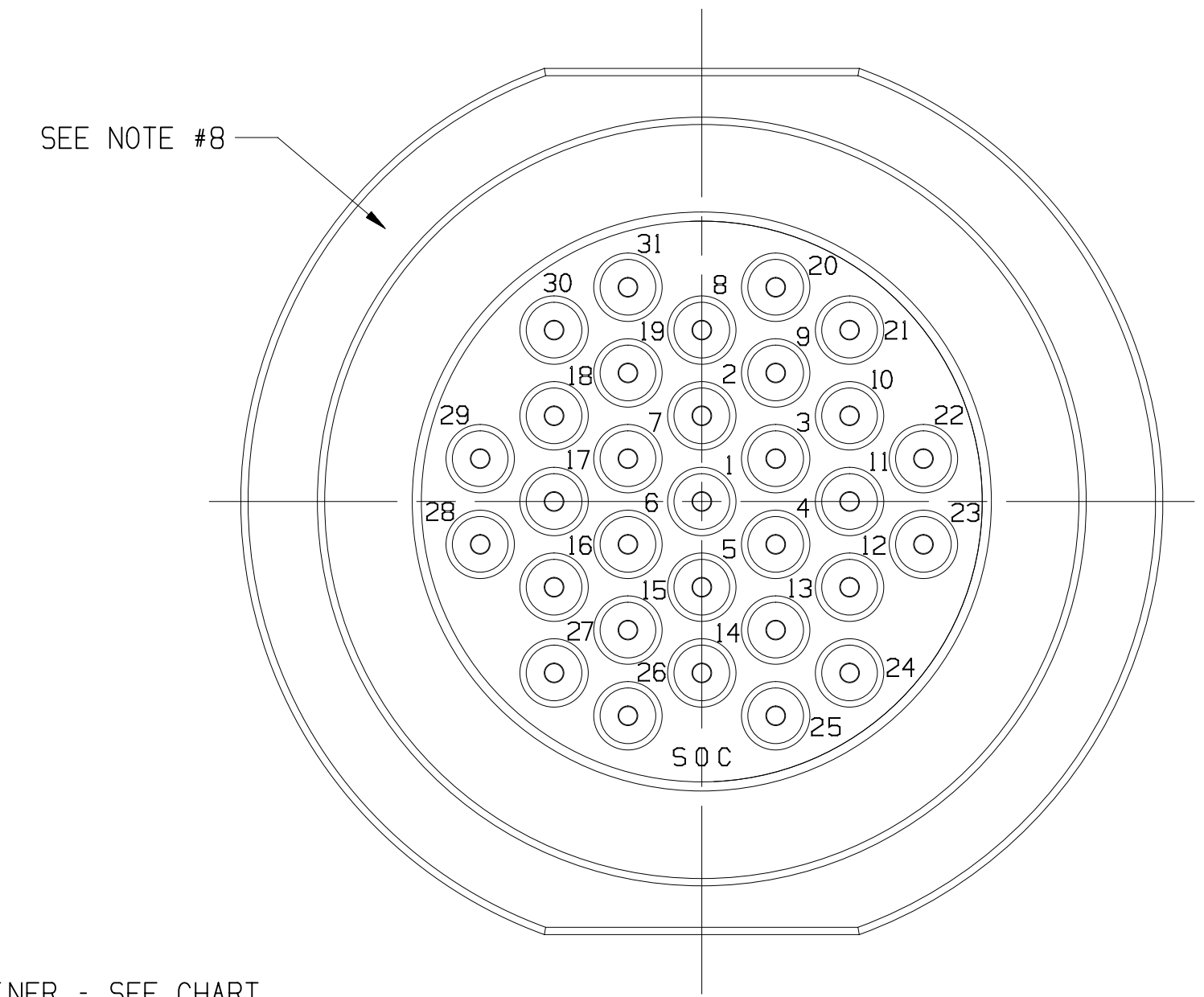
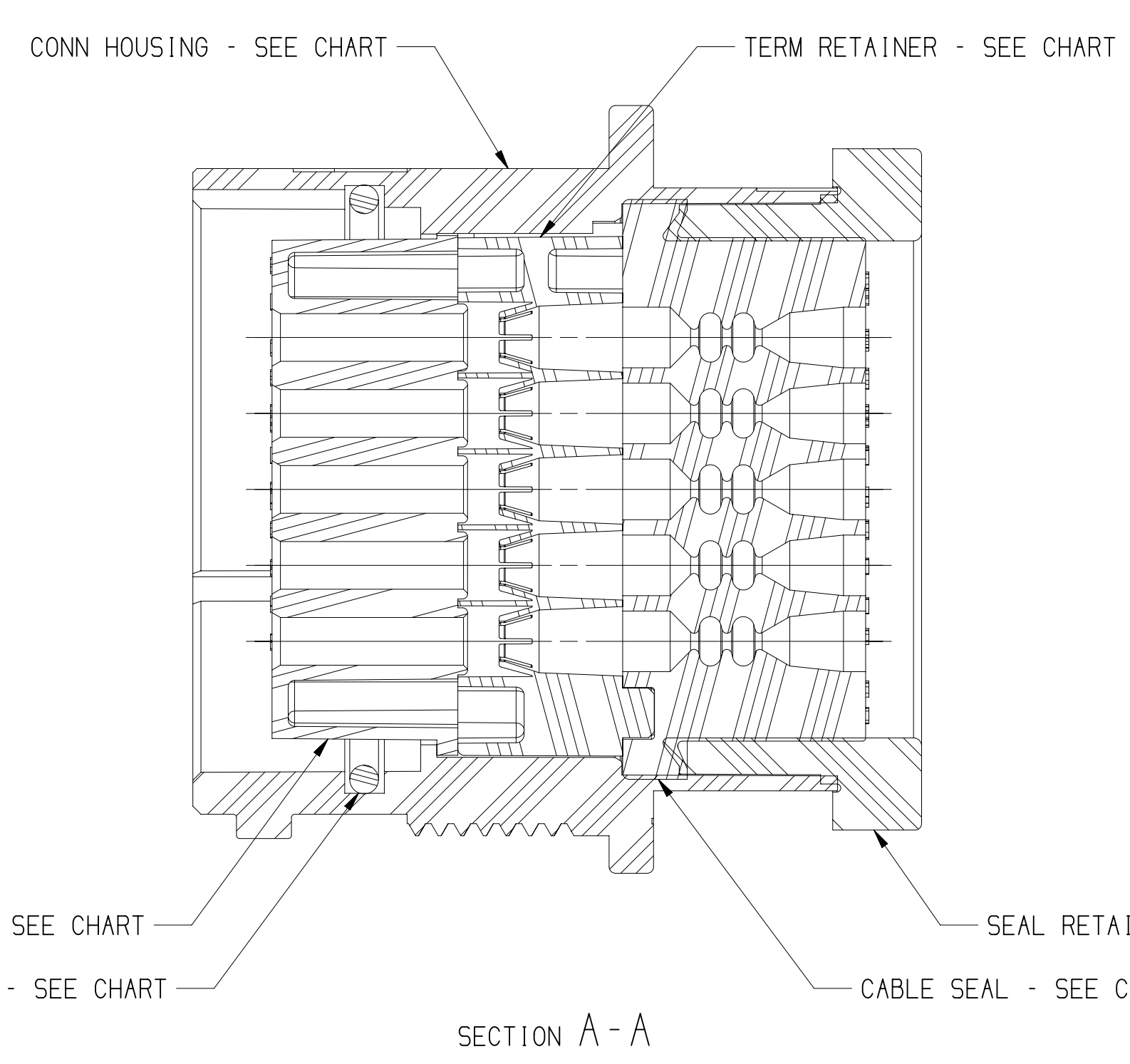
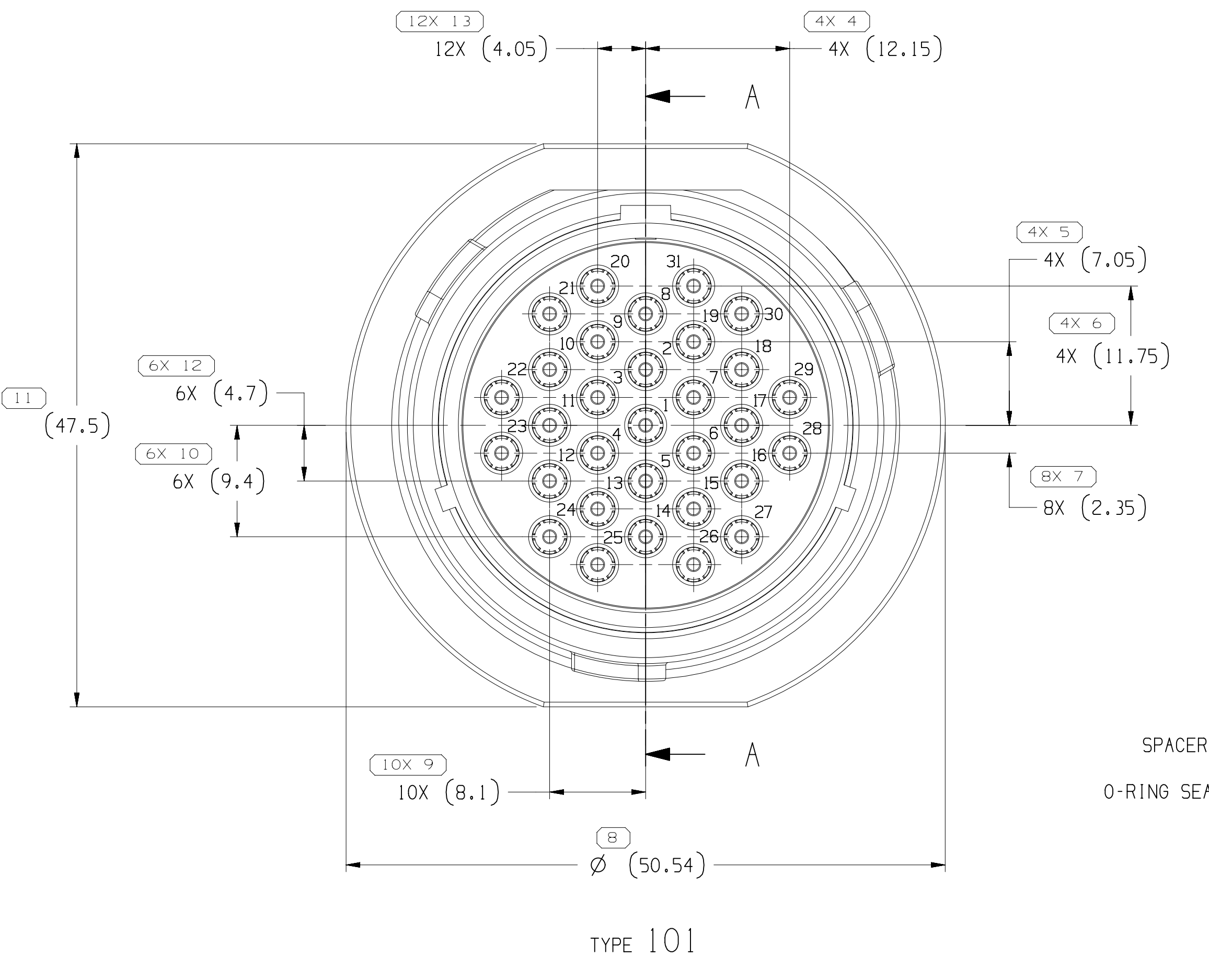
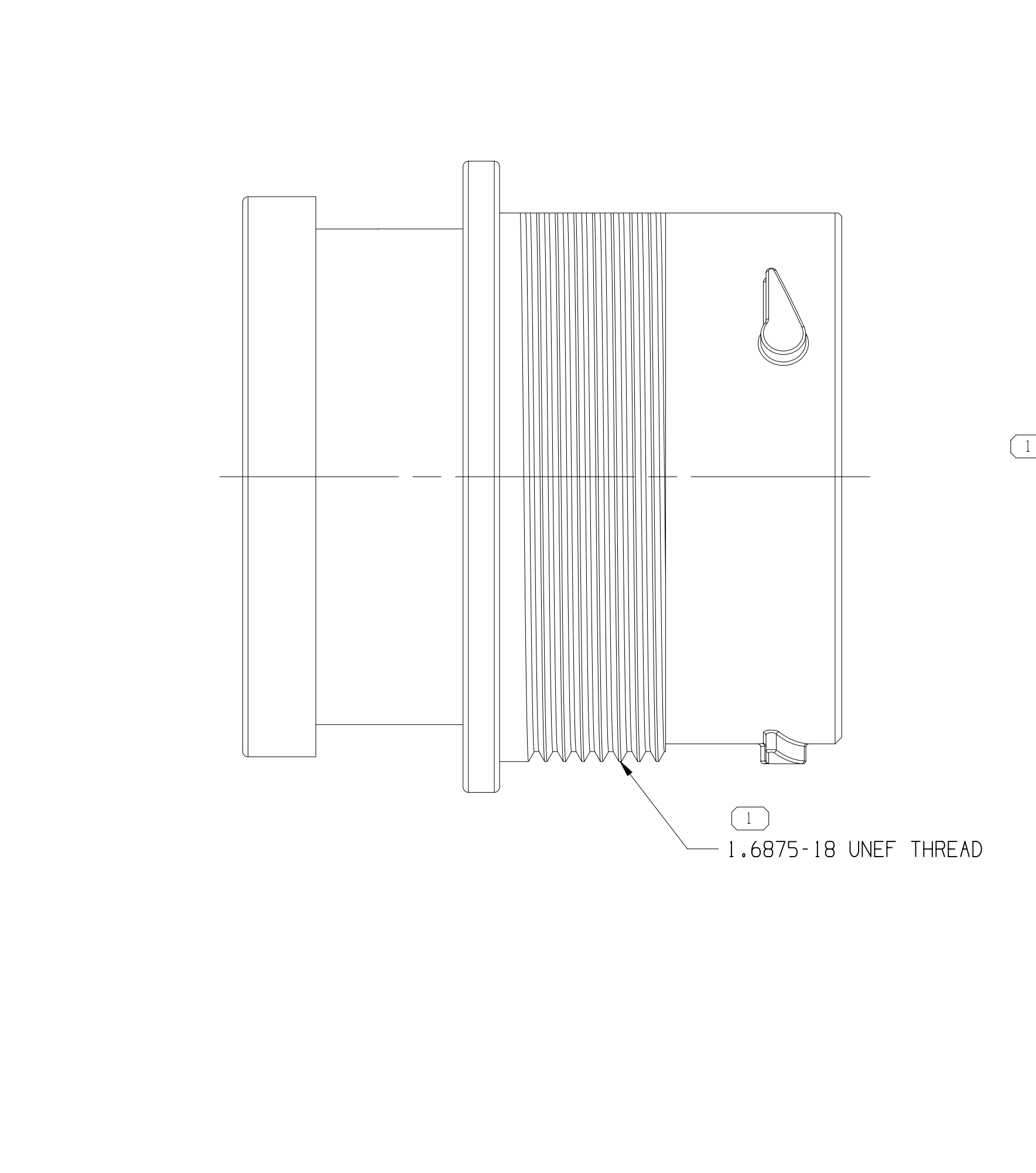
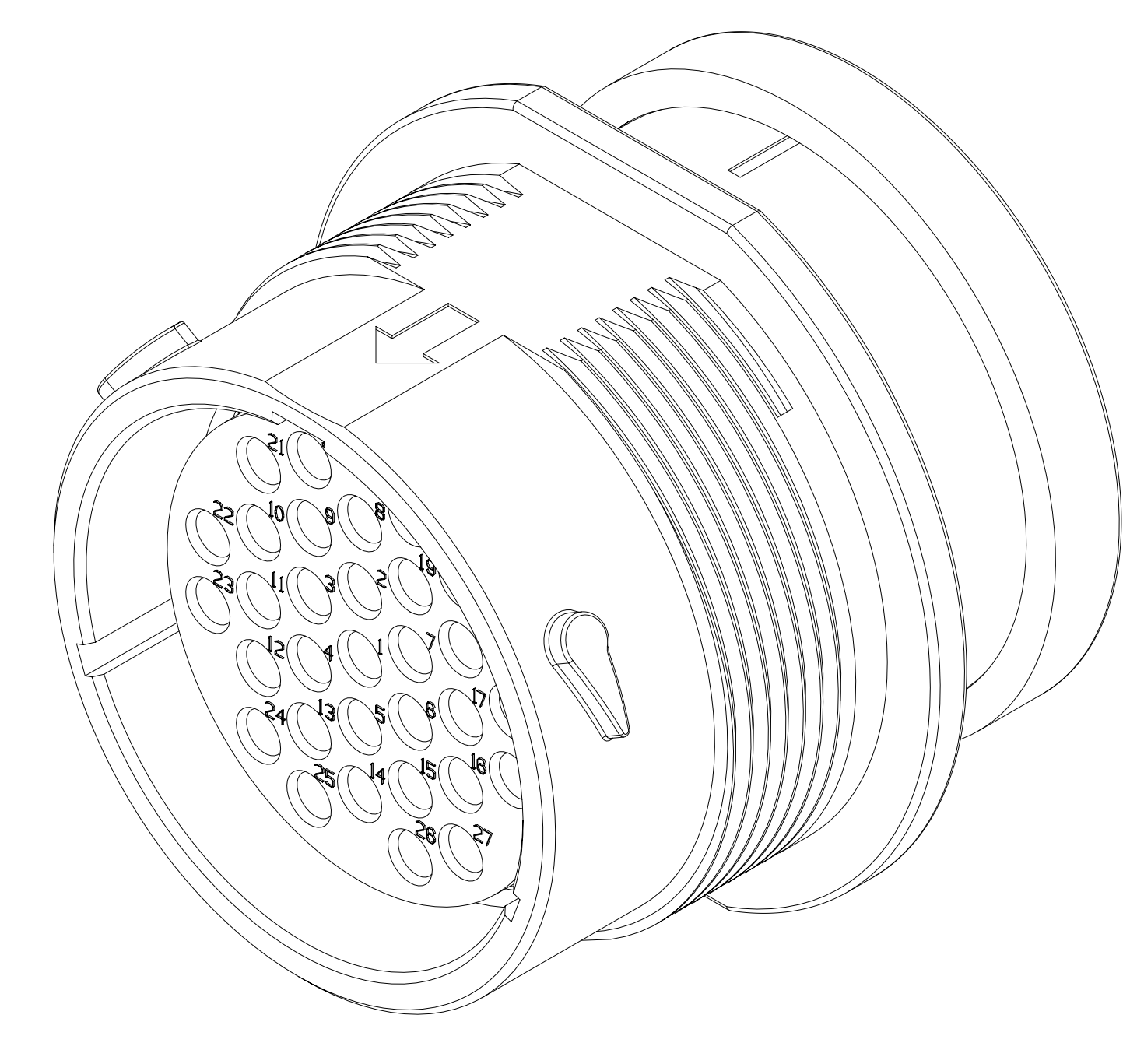
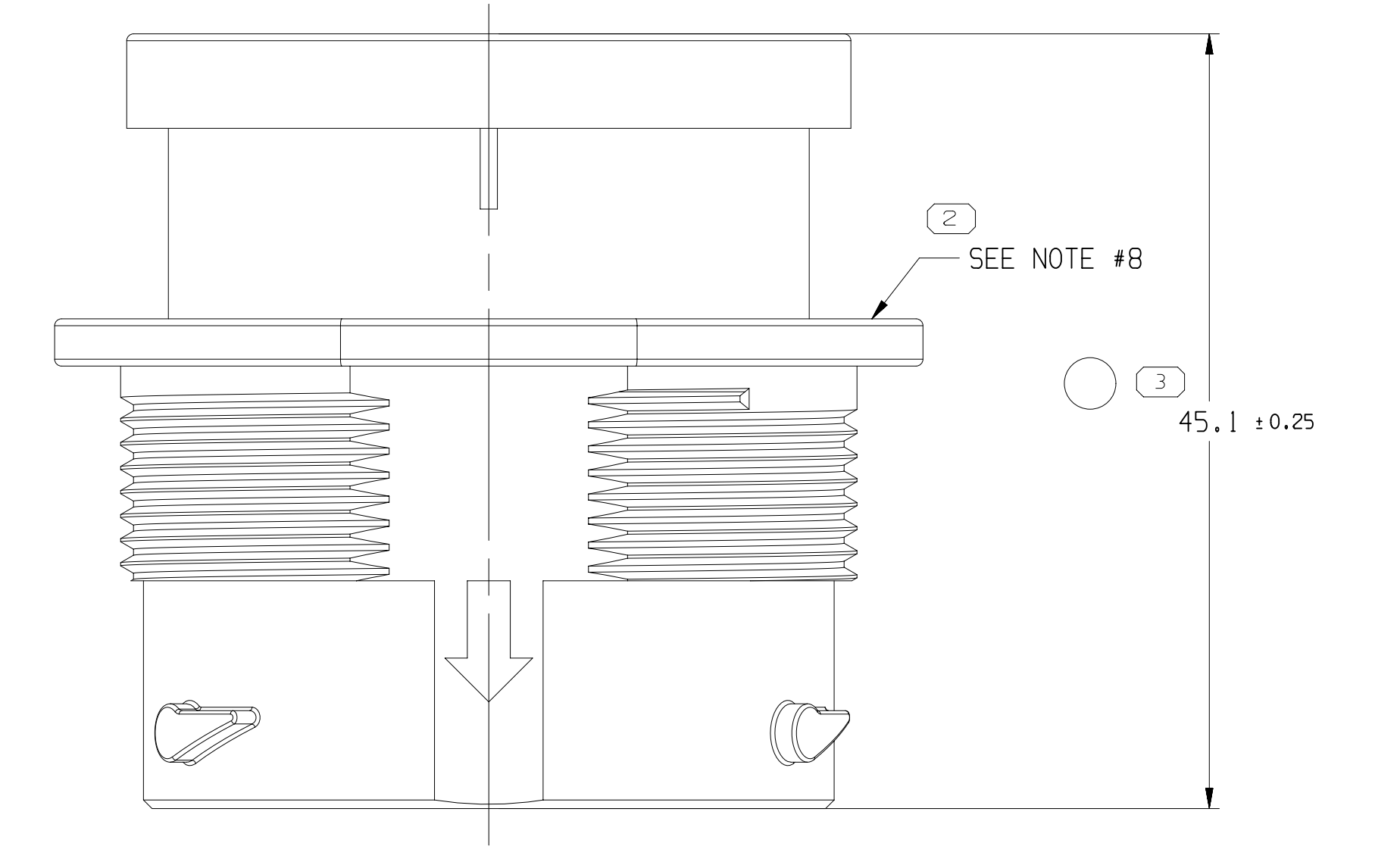
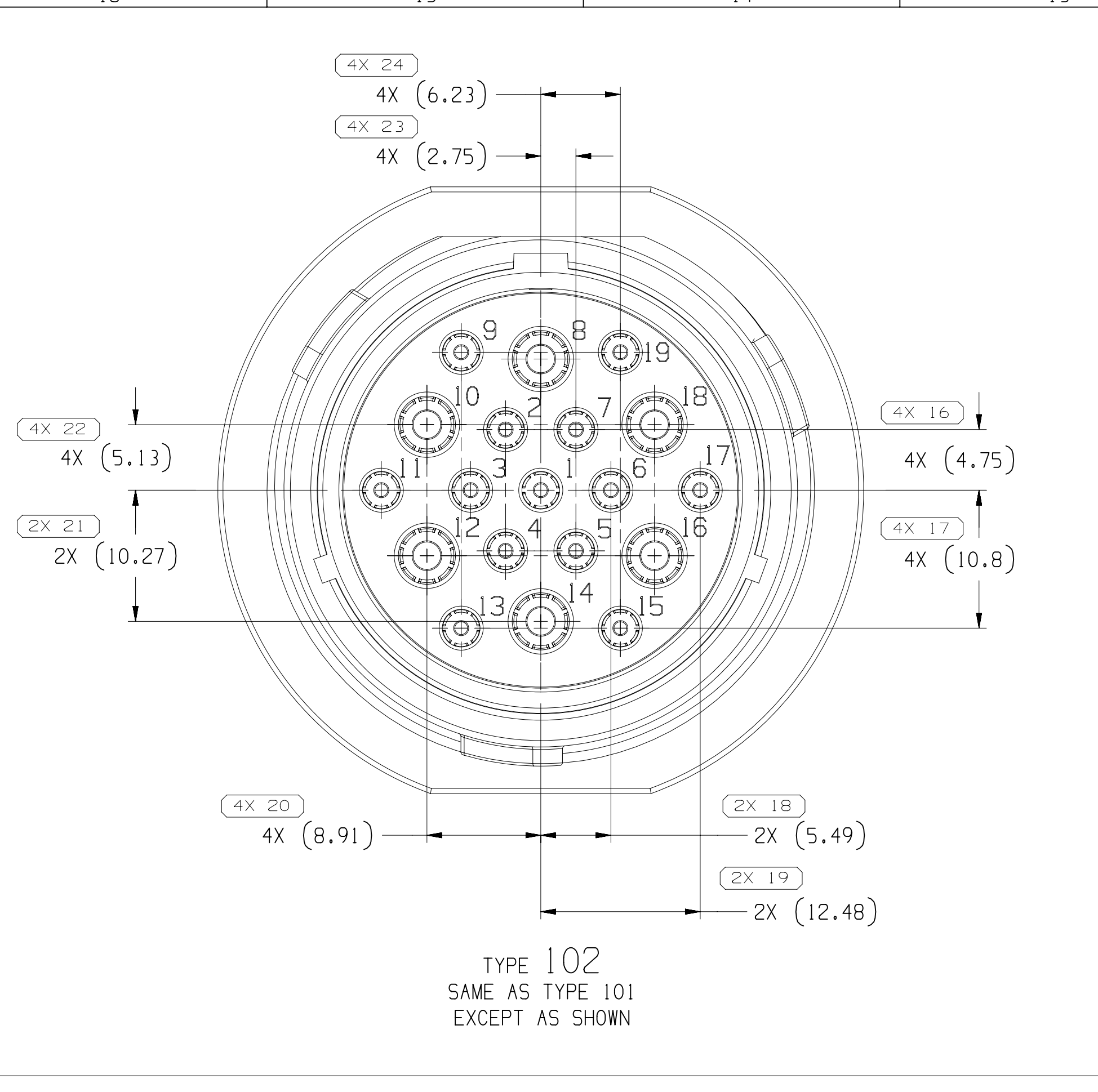


DWG STATUS				ZONE		REVISION HISTORY		AUTH		DR		APVD	
DATE	STG	REV	N/P	CHG									
06JN13	R	01	-	-			ALL PARTS - RELEASED	422795	MLM	MLM	GER	1	
07AUI3	R	02	-	-			ALL PARTS - 45.4 ±0.25/-0.3 WAS 45.4 ±0.2/-0.3, ADDED "MATING PART NUMBER" COLUMN AND REVISED RETENTION FORCE NOTE	423506	ORA	JWM	GER	2	
010C13	R	03	-	-			15544348-49 - SPACER WAS 13697458; 15544350 - SPACER WAS 13667936; 15544351 - TERM RETAINER WAS 13667902 AND SPACER WAS 13697113	424010	IMF	JAA	GER	3	
24JAI7	R	04	-	-			ALL PARTS - ADDED "THIS PART ACCEPTS NUT P/N" NOTE	435503	GDH	JWM	VHG	4	
26N019	R	05	-	-			ALL PARTS - 45.1 ±0.25 WAS 45.4 ±0.25/-0.3	550539	JGM	JGM	ERG	5	

SYMBOL DEFINITION
 A DIMENSION WITHOUT AN INSPECTION REPORT SYMBOL () DOES NOT REQUIRE INSPECTION. IT MAY BE CONTROLLED ON THE INDIVIDUAL COMPONENT DRAWING.

TOTAL NO OF INSPECTIONS REQUIRED	91
LAST NO. USED	24

MISSING SYMBOLS				NO MISSING SYMBOL NUMBER	
-----------------	--	--	--	--------------------------	--



- NOTES
- UNLESS OTHERWISE SPECIFIED AND/OR INDICATED: DIMENSIONS ARE TO FACE OF VIEW SHOWN AND AUTOMATICALLY ROUNDED BY COMPUTER FOR INSPECTION (SEE MATH MODEL FOR PRECISE DIMENSIONS). FOR ALL OTHER DIMENSIONS NOT SHOWN BUT REQUIRED FOR TOOL BUILD, SEE MATH MODEL FOR PRECISE TOOL PATH DATA.
 - THIS PRODUCT IS NOT CATEGORIZED AS AN APPEARANCE ITEM, MINOR IMPERFECTIONS INCLUDING, BUT NOT LIMITED TO, FLOW MARKS, COLOR BLEMISHES, GATE VESTIGE, AND SOFT FLASH THAT DO NOT AFFECT THE FIT, FORM, OR FUNCTION OF THE PART ARE PERMISSIBLE PER DPMP-4.7-CS-01.
 - THIS PART IS NOT CONTROLLED FOR AUTOMATIC FEEDING.
 - CAVITIES TO ACCEPT THE FOLLOWING TERMINALS OR EQUIVALENT:
 - HES 1.6 - 13663718
 - HES 2.4 - 13783291
 - FOR APPLICATION DATA SEE THE INDIVIDUAL APPLICATION DRAWINGS.
 - SEAL RETAINER PULL RETENTION FORCE MUST EXCEED 880 N.
 - SHIPPING CAP 13752446 OR EQUIVALENT CAN BE ADDED AFTER HARNESS BUILD TO PROTECT PINS & PROTECT AGAINST CONTAMINATION.
 - DELPHI ASSEMBLY PART NUMBER, AND JULIAN DATE OF MANUFACTURE TO BE LAZER ETCHED ON HOUSING SURFACE SHOWN. CHARACTER HEIGHT TO BE 2MM MINIMUM.
 - ASSEMBLY NUT TORQUE TO ATTACH ASSEMBLY TO MOUNTING HOLE TO BE 3 NM ±0.5 NM.
 - THIS PART ACCEPTS THE FOLLOWING COMPONENTS OR EQUIVALENT:
 - NUT 15417623

PART NO	REV	N/P	TYPE	TOTAL CAVITIES	CONN HOUSING	TERM RETAINER	SPACER	CABLE SEAL	SEAL RETAINER	O-RING SEAL	CABLE OD	MATING PART NUMBER		
15544351	01	AD	102	19	15543568	13697113	13697458	15543615	15543570	15454125	N/A	2.25-3.7	2.9-4.3	15544346
15544350	01	AD	102	19	15543568	13697113	13697458	15543614	15543570	15454125	N/A	1.3-2.85	2.45-3.6	15544345
15544349	01	AD	101	31	15543568	13667902	13667936	15543581	15543570	15454125	N/A	2.25-3.7	N/A	15544344
15544348	01	AD	101	31	15543568	13667902	13667936	15543580	15543570	15454125	N/A	1.3-2.85	N/A	15544343

APTIV
 CONNECTION SYSTEMS
 WARREN, OH
 COPYRIGHT 2013 APTIV. ALL RIGHTS RESERVED.

THIS DRAWING IS THE PROPERTY OF APTIV AND CONTAINS APTIV CONFIDENTIAL INFORMATION. THE REPRODUCTION, DISTRIBUTION AND UTILIZATION OF THIS DOCUMENT OR ITS RELATED CAD DATA, AS WELL AS COMMUNICATION OF ANY CONTENT TO OTHERS, WITHOUT EXPRESS AUTHORIZATION, IS PROHIBITED.

DR: M. MELLOTT
 APVD: M. MELLOTT
 APVD: G. ROBISON

DATE: 06JN13
 06JN13
 06JN13

DRAWING NAME: TAXI ASM CONN F HES
 DRAWING NUMBER: 15544347

SCALE: 3:1
 SHEET NO: 1 OF 1
 STG: R
 REV: 05

THIRD ANGLE PROJECTION	DO NOT SCALE	USE MATH DATA	APPROVED