

WITH AND WITHOUT SHORTING BAR [LOCATION] SRS ASSEMBLY OPTION(S)

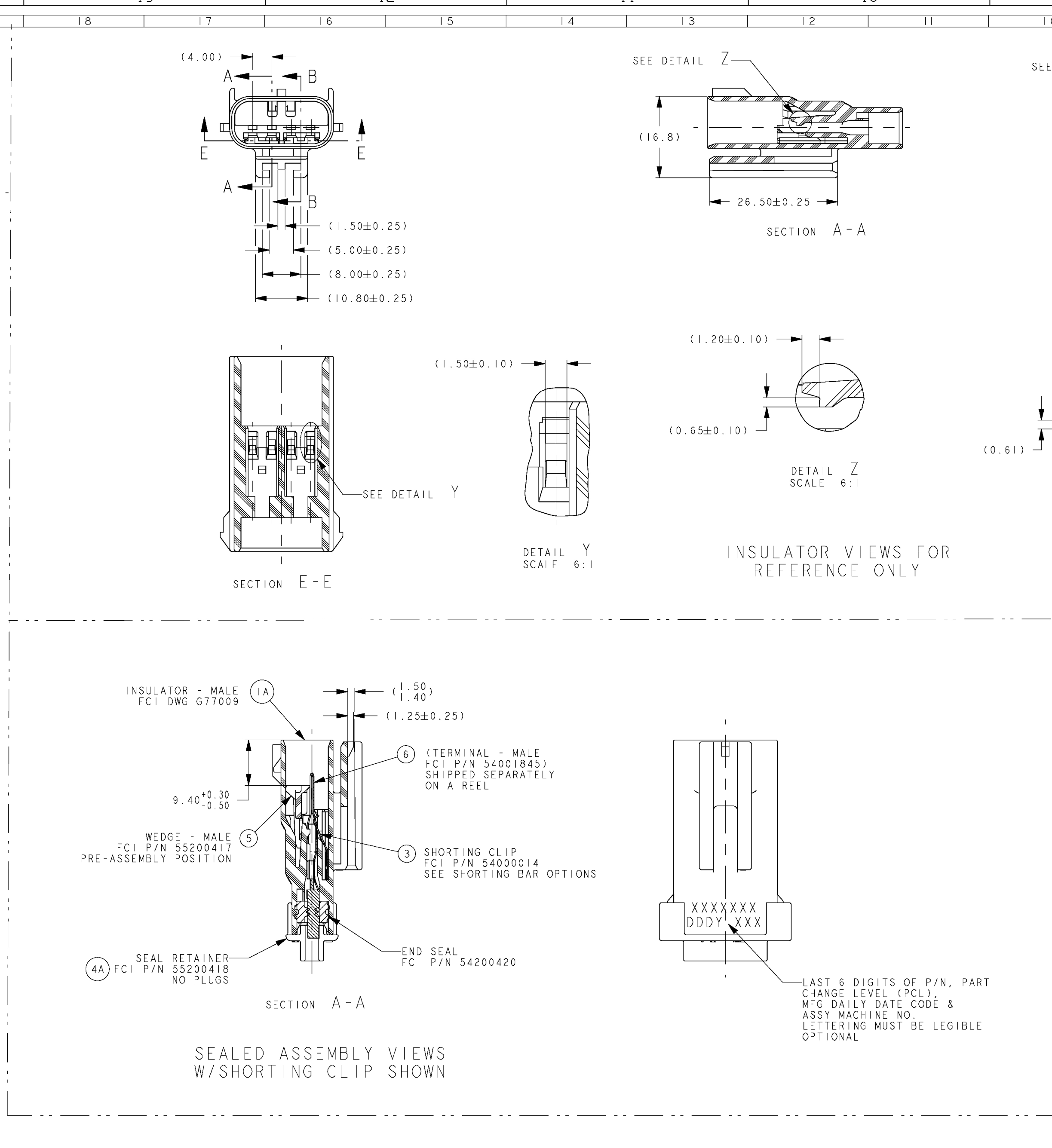
REV	DATE	BY	CHKD	ZONE	REVISION HISTORY	AUTH	DR	APVD	APV2
15AU02	R	01	-	-	15422503 - MOVED TO TAXI & 15443858 - RELEASED	229312	HH	HH	DG
01AP03	R	02	-	-	ALL PARTS - DWG UPDATED TO LATEST PRINT	238851	LFS	KGP	JCH
13DE07	R	03	-	-	ALL PARTS - DWG UPDATED TO LATEST PRINT	296750	AVE	AVE	MMW
12JA08	R	04	-	-	ALL PARTS - DWG UPDATED TO LATEST PRINT	297254	VMC	VMC	VMC
27AP21	R	05	-	-	ALL PARTS - UPDATED DWG TO LATEST SUPPLIER PRINT: 15509573, 33500198-99, 33500201-03, 33500209-12, 33500214-17, 33503709-17 - WERE ON SHT 04	554065	LGD	JAA	JAF
21JL21	R	06	-	-	33503714 - CORRECTED MVL PART NUMBER	554822	LGD	JAA	JVP
02SE21	R	07	-	-	33503714 - CORRECTED BOM CHART, RETAINER WAS N/A	555199	JAA	JAA	JAF

CHART - ASSEMBLY PART NUMBERS

REV	DATE	BY	CHKD	ZONE	UN-SEALED		SEALED	
					WITH CLIP	W/O CLIP	WITH CLIP	W/O CLIP
15AU02	R	01	-	-				
01AP03	R	02	-	-				
13DE07	R	03	-	-				
12JA08	R	04	-	-				
27AP21	R	05	-	-				
21JL21	R	06	-	-				
02SE21	R	07	-	-				

MAT'NG PART NUMBER CHART

REV	DATE	BY	CHKD	ZONE	REVISION HISTORY	AUTH	DR	APVD	APV2
15AU02	R	01	-	-	15422503 - MOVED TO TAXI & 15443858 - RELEASED	229312	HH	HH	DG



NOTES:

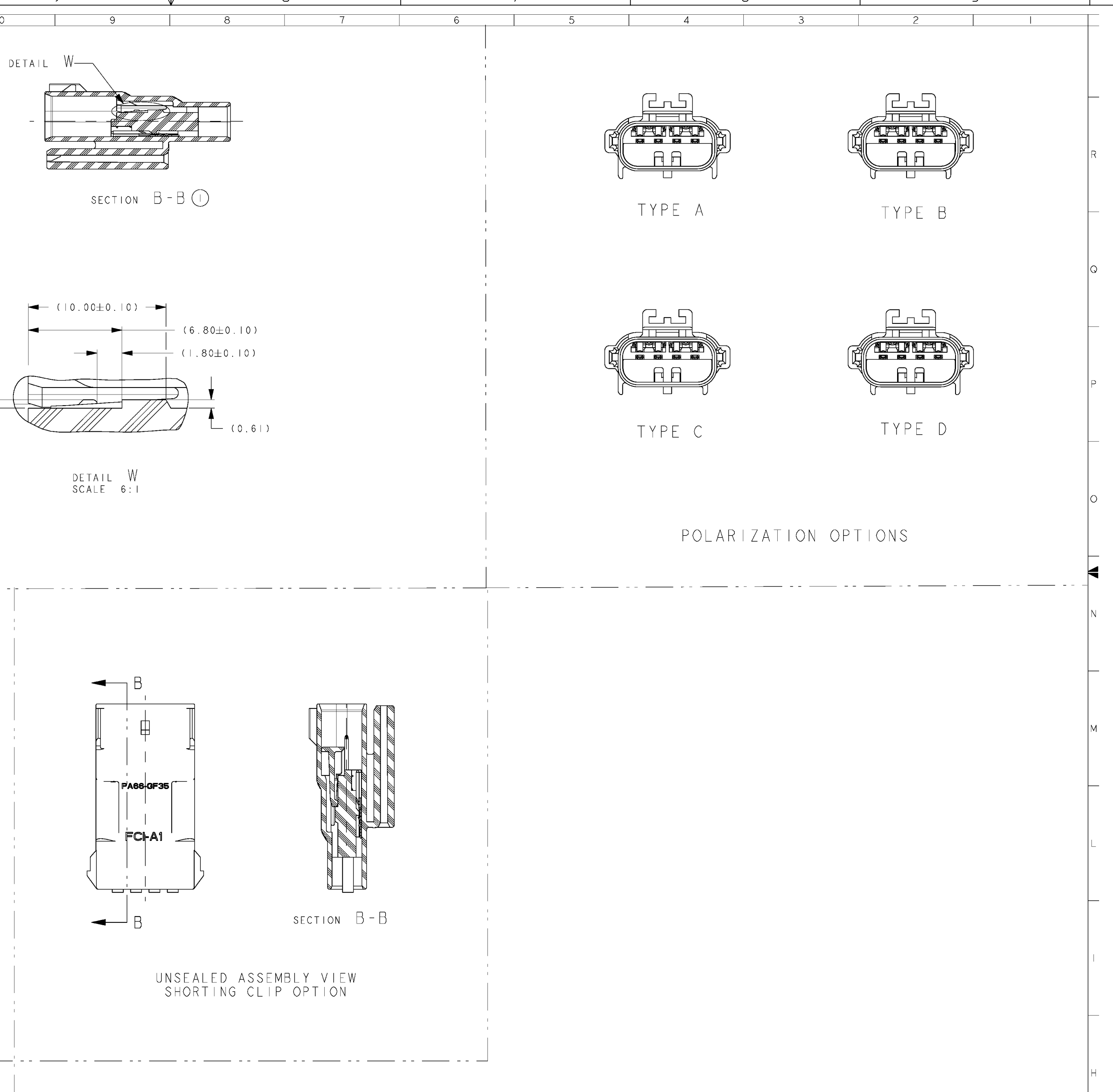
- QUALITY ASSURANCE REQUIREMENTS PER CHRYSLER PS-7300 :1 SPC DATA REQUIRED
- ENGINEERING APPROVAL OF SUPPLIER SAMPLES IS REQUIRED PRIOR TO AUTHORIZATION OF PART PRODUCTION.
- CHANGES IN DESIGN CONFIGURATION OR PROCESSING FROM THE PART PREVIOUSLY APPROVED FOR PART PRODUCTION REQUIRES PRIOR ENGINEERING APPROVAL.
- WIRING FABRICATORS MUST SPECIFY PROPER INSULATION TYPE FOR TEMPERATURE CLASS THE CONNECTOR SYSTEM IS USED FOR.
- ALL THE SEALED CONNECTOR APPLICATIONS MUST BE USED WITH CHRYSLER WIRE SPECIFICATION W6808B, W58002 OR W51888 20, 18, OR 16 GAGE WIRES ONLY UNLESS OTHERWISE SPECIFIED (WIRE INSULATIONS 01.50 MINIMUM TO 02.41 MAXIMUM).
- ALL NON-SEALED APPLICATIONS MAY BE USED WITH ANY WIRE INSULATION 22 GAGE THROUGH 14 GAGE (EXCEPT AS NOTED) PROVIDING THAT A TERMINAL GRIP FOR THAT GAGE/INSULATION COMBINATION IS SHOWN ON C18002-CUST TERMINAL DRAWING.
- MAXIMUM INSULATION CRIMP WIDTH = 3.30
MAXIMUM INSULATION CRIMP HEIGHT = 2.80
MAXIMUM INSULATION DIAMETER = 2.65
- TEST METHOD PER CHRYSLER PERFORMANCE SPECIFICATION SAE/USCAR-2 REV. 5, CONNECTOR ENGAGE & DIS-ENGAGE WITH LATCH DEPRESSURE FORCE NOT TO EXCEED 75N.
- WEDGE SEATING FORCES - 75 N. MAXIMUM
X-MAS TREE CLIP INSERTION FORCE - 75 N. MAX
- SUPPLIER, MOLD & CAVITY I.D. SIGNIFIES TOOL OWNERSHIP, FOR REFERENCE.
- ANNUAL QUALITY REQUIREMENTS:
IT IS PERMISSIBLE TO PERFORM CONTINUOUS CONFORMANCE PER MVL SPECIFICATION WAGA-001 INSTEAD OF ANNUAL LAYOUT & ANNUAL PV REQUIREMENTS OF QS 1600 SECTION 9 & SAE/USCAR-2 REV. 5 EXCEPT AS NOTED BELOW:
INSERTION OR TO FULLY SEATED POSITION IS 6N MINIMUM AND WEDGE REMOVAL FROM FULLY SEATED POSITION IS 75N MAXIMUM
- ALL NON-REFERENCE DIMENSIONS ARE REQUIRED
- MUST CONFORM TO THE FOLLOWING CHRYSLER/YMA STANDARDS:
SAE/USCAR-2 REV 3 EXCEPT AS NOTED ABOVE
PS-7300 QUALITY ASSURANCE (CHRYSLER)
PS-4480 CEM-4 (CHRYSLER) PART 2, 1 (IG-009-2 YNA)
PS-9227 DATA EXCHANGE (CHRYSLER) (G-009-7 YNA)
PS-10252 INFORMATION SECURITY (CHRYSLER)
- USED WITH: DBL X-MAS TREE CLIP - CHRYSLER P/N 04701091
SGL X-MAS TREE CLIP - CHRYSLER P/N 04625797
C18002-CUST 1.5MM TERMINAL IS SYMMETRICAL ABOUT CENTERLINE CAN BE INSERTED 180°
- RETAINER P/N 55200425 IS NOT POLARIZED AND IT MUST HAVE PROPER PLUG LOCATION FOR SINGLE SHORTING CLIP OR 2-WAY APPLICATION SEE SAFETY RESTRAINT SYSTEM (SRS) OPTION VIEWS AND CHART

REQUIREMENTS

REV	DATE	BY	CHKD	ZONE	REVISION HISTORY	AUTH	DR	APVD	APV2
15AU02	R	01	-	-	15422503 - MOVED TO TAXI & 15443858 - RELEASED	229312	HH	HH	DG

REVISION HISTORY

REV	DATE	BY	CHKD	ZONE	REVISION HISTORY	AUTH	DR	APVD	APV2
15AU02	R	01	-	-	15422503 - MOVED TO TAXI & 15443858 - RELEASED	229312	HH	HH	DG



REQUIREMENTS

REV	DATE	BY	CHKD	ZONE	REVISION HISTORY	AUTH	DR	APVD	APV2
15AU02	R	01	-	-	15422503 - MOVED TO TAXI & 15443858 - RELEASED	229312	HH	HH	DG

REVISION HISTORY

REV	DATE	BY	CHKD	ZONE	REVISION HISTORY	AUTH	DR	APVD	APV2
15AU02	R	01	-	-	15422503 - MOVED TO TAXI & 15443858 - RELEASED	229312	HH	HH	DG

MAT'NG PART NUMBER CHART

REV	DATE	BY	CHKD	ZONE	REVISION HISTORY	AUTH	DR	APVD	APV2
15AU02	R	01	-	-	15422503 - MOVED TO TAXI & 15443858 - RELEASED	229312	HH	HH	DG

REVISION HISTORY

REV	DATE	BY	CHKD	ZONE	REVISION HISTORY	AUTH	DR	APVD	APV2
15AU02	R	01	-	-	15422503 - MOVED TO TAXI & 15443858 - RELEASED	229312	HH	HH	DG
01AP03	R	02	-	-	ALL PARTS - DWG UPDATED TO LATEST PRINT	238851	LFS	KGP	JCH
13DE07	R	03	-	-	ALL PARTS - DWG UPDATED TO LATEST PRINT	296750	AVE	AVE	MMW
12JA08	R	04	-	-	ALL PARTS - DWG UPDATED TO LATEST PRINT	297254	VMC	VMC	VMC
27AP21	R	05	-	-	ALL PARTS - UPDATED DWG TO LATEST SUPPLIER PRINT: 15509573, 33500198-99, 33500201-03, 33500209-12, 33500214-17, 33503709-17 - WERE ON SHT 04	554065	LGD	JAA	JAF
21JL21	R	06	-	-	33503714 - CORRECTED MVL PART NUMBER	554822	LGD	JAA	JVP
02SE21	R	07	-	-	33503714 - CORRECTED BOM CHART, RETAINER WAS N/A	555199	JAA	JAA	JAF

REVISION HISTORY

REV	DATE	BY	CHKD	ZONE	REVISION HISTORY	AUTH	DR	APVD	APV2
15AU02	R	01	-	-	15422503 - MOVED TO TAXI & 15443858 - RELEASED	229312	HH	HH	DG

REVISION HISTORY

REV	DATE	BY	CHKD	ZONE	REVISION HISTORY	AUTH	DR	APVD	APV2
15AU02	R	01	-	-	15422503 - MOVED TO TAXI & 15443858 - RELEASED	229312	HH	HH	DG

MAT'NG PART NUMBER CHART

REV	DATE	BY	CHKD	ZONE	REVISION HISTORY	AUTH	DR	APVD	APV2
15AU02	R	01	-	-	15422503 - MOVED TO TAXI & 15443858 - RELEASED	229312	HH	HH	DG

15443165

APV1 H. HERNANDEZ 15AU02

APV2 H. HERNANDEZ 15AU02

APV3 D. GARCIA 19AU02

APV4

APV5

APV6

APV7

APV8

APV9

APV10

APV11

APV12

APV13

APV14

APV15

APV16

APV17

APV18

APV19

APV20

APV21

APV22

APV23

APV24

APV25

APV26

APV27

APV28

APV29

APV30

APV31

APV32

APV33

APV34

APV35

APV36

APV37

APV38

APV39

APV40

APV41

APV42

APV43

APV44

APV45

APV46

APV47

APV48

APV49

APV50

APV51

APV52

APV53

APV54

APV55

APV56

APV57

APV58

APV59

APV60

APV61

APV62

APV63

APV64

APV65

APV66

APV67

APV68

APV69

APV70

APV71

APV72

APV73

APV74

APV75

APV76

APV77

APV78

APV79

APV80

APV81

APV82

APV83

APV84

APV85

APV86

APV87

APV88

APV89

APV90

APV91

APV92

APV93

APV94

APV95

APV96

APV97

APV98

APV99

APV100