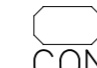
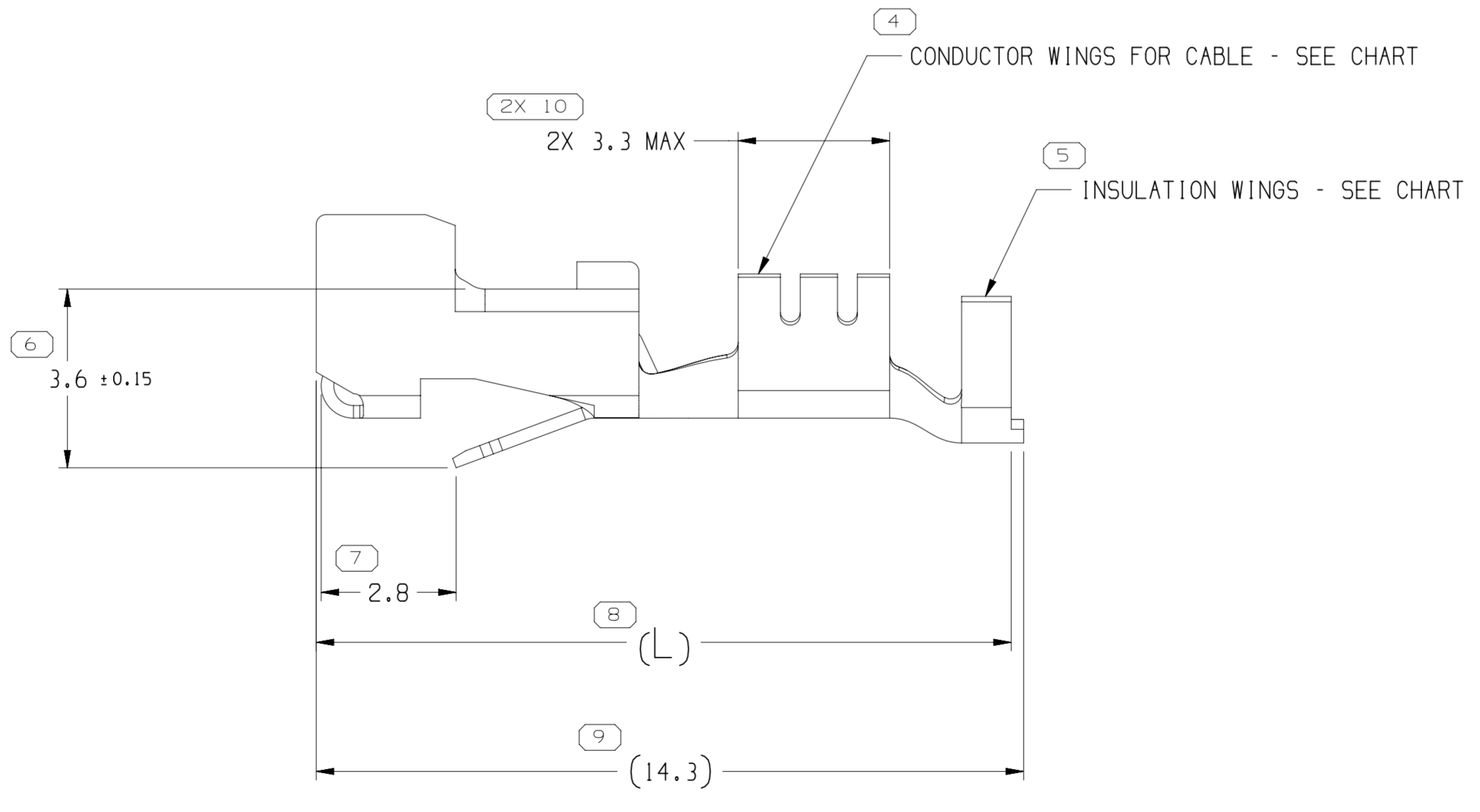
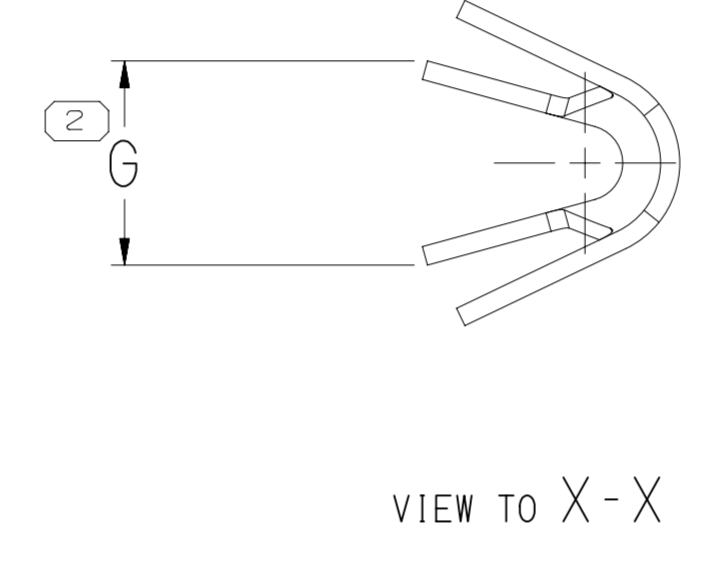
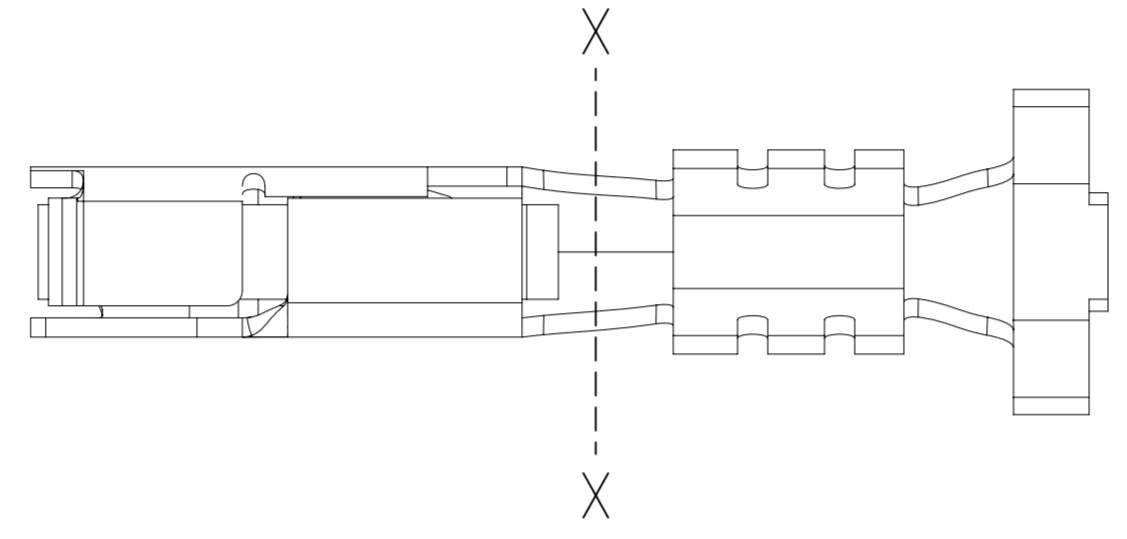
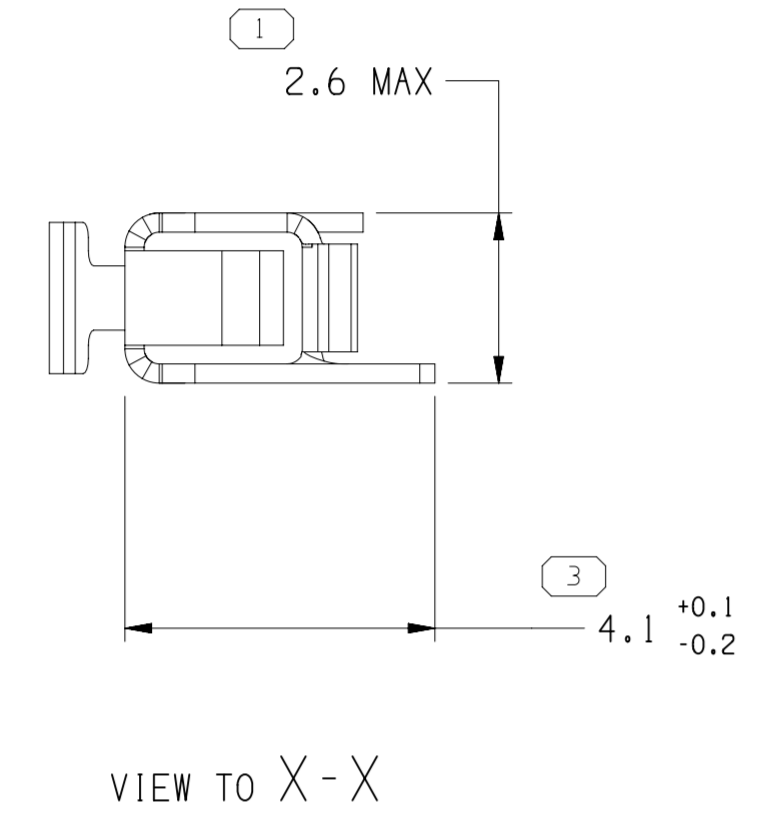
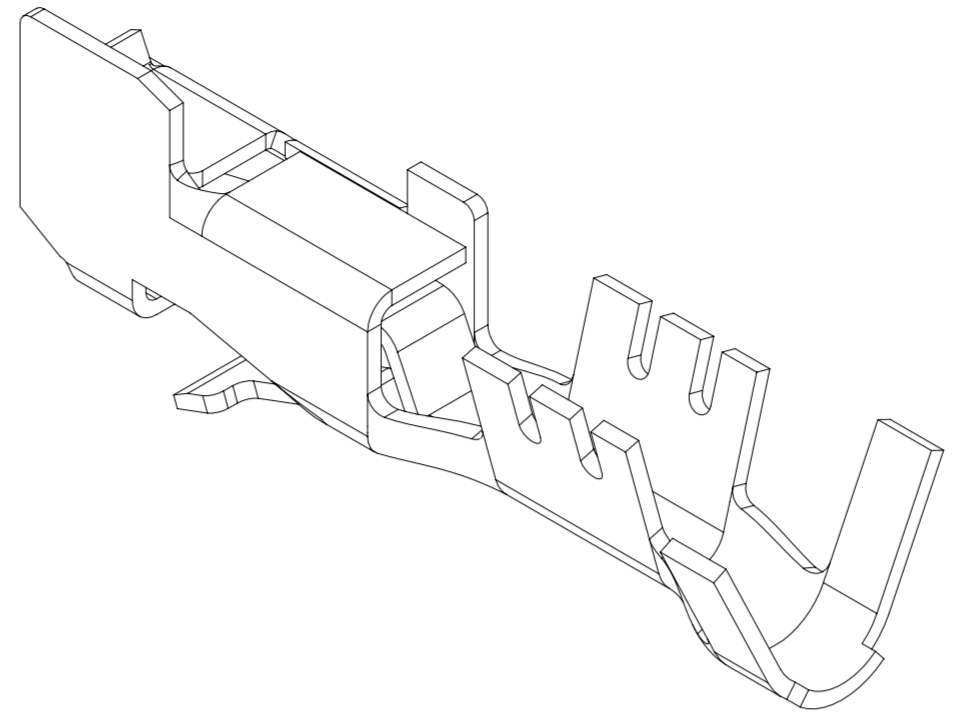


SYMBOL DEFINITION		MISSING SYMBOLS	
A DIMENSION WITHOUT AN INSPECTION REPORT SYMBOL  DOES NOT REQUIRE INSPECTION. IT MAY BE CONTROLLED ON THE INDIVIDUAL COMPONENT DRAWING.	TOTAL NO OF INSPECTIONS REQUIRED	11	NO MISSING SYMBOL NUMBER
	LAST NO. USED	10	

DWG STATUS					ZONE	REVISION HISTORY	AUTH	DR	APVD 1	APVD 2
DATE	STG	REV	N/P	CHG						
17DE01	R	05	-	-		CLEARED REV COL; ALL PARTS - REVISED TOLERANCE CRIMP WINGS	218778	AFM	EOV	GM
26FE04	R	06	-	-		ALL PARTS - CREATED SOLID MODEL	241869	RAO	EAR	BG
280C04	R	07	-	-		UPDATED PDM ATTRIBUTES	260569	MJM	MJM	BG
180C05	R	08	-	-		UPDATED PDM ATTRIBUTES	272913	EFS	JVM	BG
02AU06	R	09	-	-		ALL PARTS - ADDED 3.3 MAX DIM	283169	TLD	TLD	BG
05MY16	R	10	-	-		ALL PARTS - UPDATED PDM ATTRIBUTES	432949	NRM	LES	LES
31JA20	R	11	-	-		12191054 - UPDATED CABLE SIZE	550929	GDH	EVV	AGH



NOTES
 1. UNLESS OTHERWISE SPECIFIED AND/OR INDICATED:
 DIMENSIONS ARE TO FACE OF VIEW SHOWN AND AUTOMATICALLY ROUNDED BY COMPUTER FOR INSPECTION (SEE MATH MODEL FOR PRECISE DIMENSIONS). FOR ALL OTHER DIMENSIONS NOT SHOWN BUT REQUIRED FOR TOOL BUILD, SEE MATH MODEL FOR PRECISE TOOL PATH DATA.

A LINE DRAWN THROUGH A PART NUMBER INDICATES THAT PHYSICAL PARTS ARE NOT AVAILABLE FOR ORDERING.
 PART NUMBERS THAT DO NOT HAVE A LINE PRESENT INDICATE THAT PHYSICAL PARTS ARE AVAILABLE FOR ORDERING.
 CONTACT APTIV SALES TO ASSURE AVAILABILITY OF PARTS.

DWG TYPE: PART DRAWING

STYLE: [Symbol]

VOLUME (CM³): [Symbol] D

DISTR CODE: [Symbol]

UNLESS OTHERWISE SPECIFIED
 THIS DOCUMENT IS IN ACCORDANCE WITH ASME Y14.5M-1994 AS AMENDED BY THE GM GLOBAL DIMENSIONING AND TOLERANCING ADDENDUM - 1997. ALL GEOMETRIC TOLERANCES AND RELATED DATUMS APPLY RFS. RULE #1 (PERFECT FORM AT MMC) DOES NOT APPLY WHEN RELATIONSHIP BETWEEN FEATURES IS ESTABLISHED BY ORIENTATION OR LOCATION TOLERANCES. SEPARATE POSITION CALLOUTS MAY BE GAGED SEPARATELY, REGARDLESS OF DATUM REFERENCE.
 ALL DIMENSIONS ARE IN MILLIMETERS

THIRD ANGLE PROJECTION [Symbol]

DO NOT SCALE [Symbol]

USE MATH DATA [Symbol]

ANGULAR TOLERANCE ±2°

• APTIV •
 CONNECTION SYSTEMS
 WARREN, OH
 COPYRIGHT 1996 APTIV. ALL RIGHTS RESERVED.

THIS DRAWING IS THE PROPERTY OF APTIV AND CONTAINS APTIV CONFIDENTIAL INFORMATION. THE REPRODUCTION, DISTRIBUTION AND UTILIZATION OF THIS DOCUMENT OR ITS RELATED CAD MATH DATA, AS WELL AS COMMUNICATION OF ANY CONTENT TO OTHERS, WITHOUT EXPRESS AUTHORIZATION, IS PROHIBITED.

DR	DATE
APVD1 J. VAZQUEZ	08FE96
APVD2 A. UGALDE G.	15JA96
APVD3 A. UGALDE G.	15JA96
APVD4	
APVD5	

SUBSTANCES OF CONCERN AND RECYCLED CONTENT PER APTIV 10949001

MATERIAL: SEE CHRT

DRAWING NAME: TAXI TERM F M/P 150.2 LOCKING LANCE

DRAWING NUMBER: 12124077

SIZE	SCALE	FRAME NO	SHEET NO	STG	REV	N/P
A1	10:1	1 OF 1	2 OF 2	R	11	-

PART NO	REV	N/P	MAT'L SIZE	MAT'L SPEC	PART NO	REV	N/P	MAT'L SPEC	SIZE (MM ²)	DIA	ID	G _{±0.2}	L
-	-	-	0.254 X 26.97	-	12191054	03	AG	GOLD PLATED COPPER ALLOY	0.5-0.35	2.2-1.3	21	2.2	14.2
-	-	-	0.254 X 26.97	-	12176860	03	AF	GOLD PLATED COPPER ALLOY	1-0.8	2.4-2.03	17	2.7	14
UNPLATED					PLATED				CABLE				

Date: 05-Feb-20 Time: 11:28:52
 User: j12p2077-cus01-502/11
 File: p12_0202020_11:27:713posn.rvt