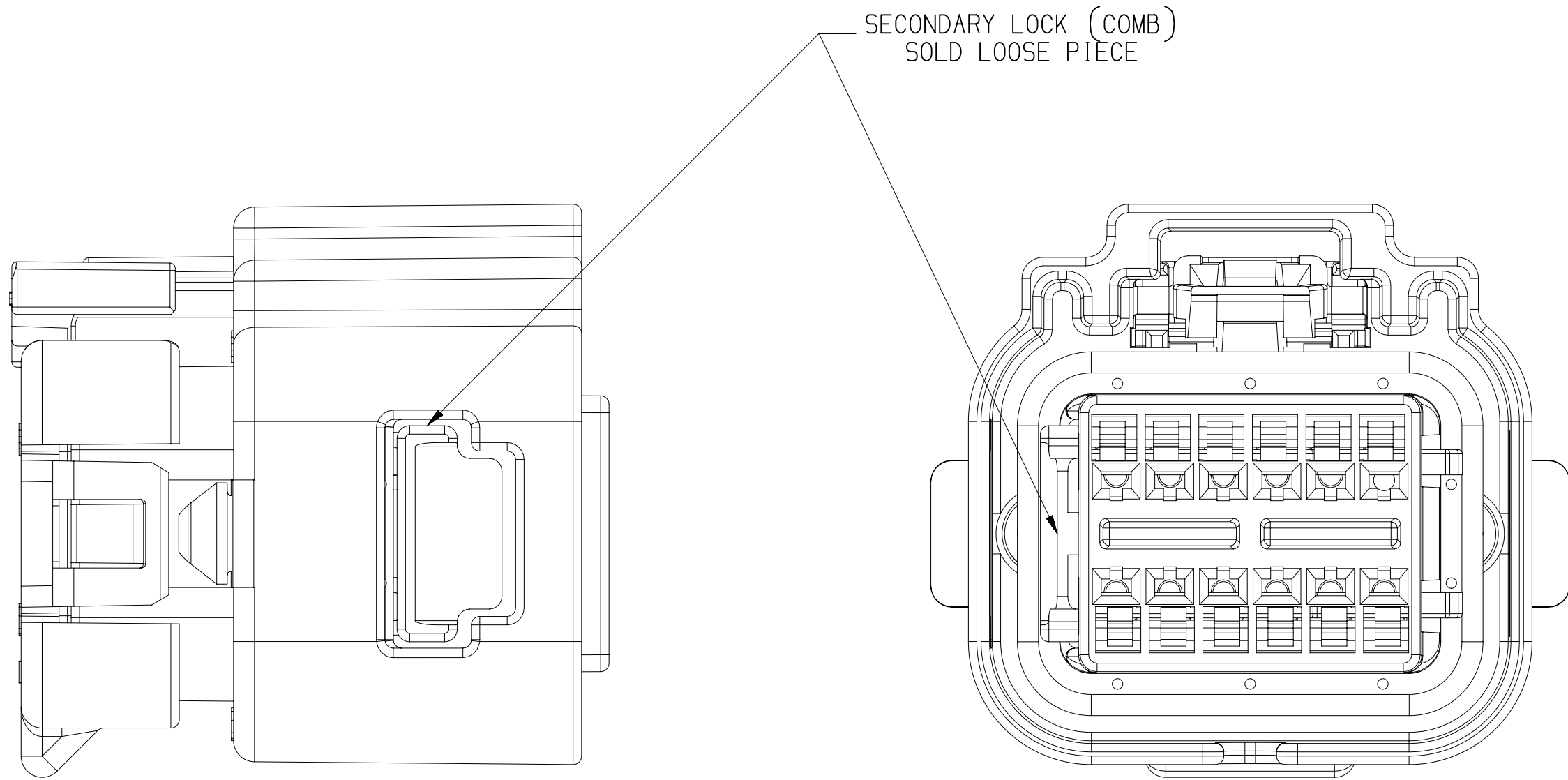
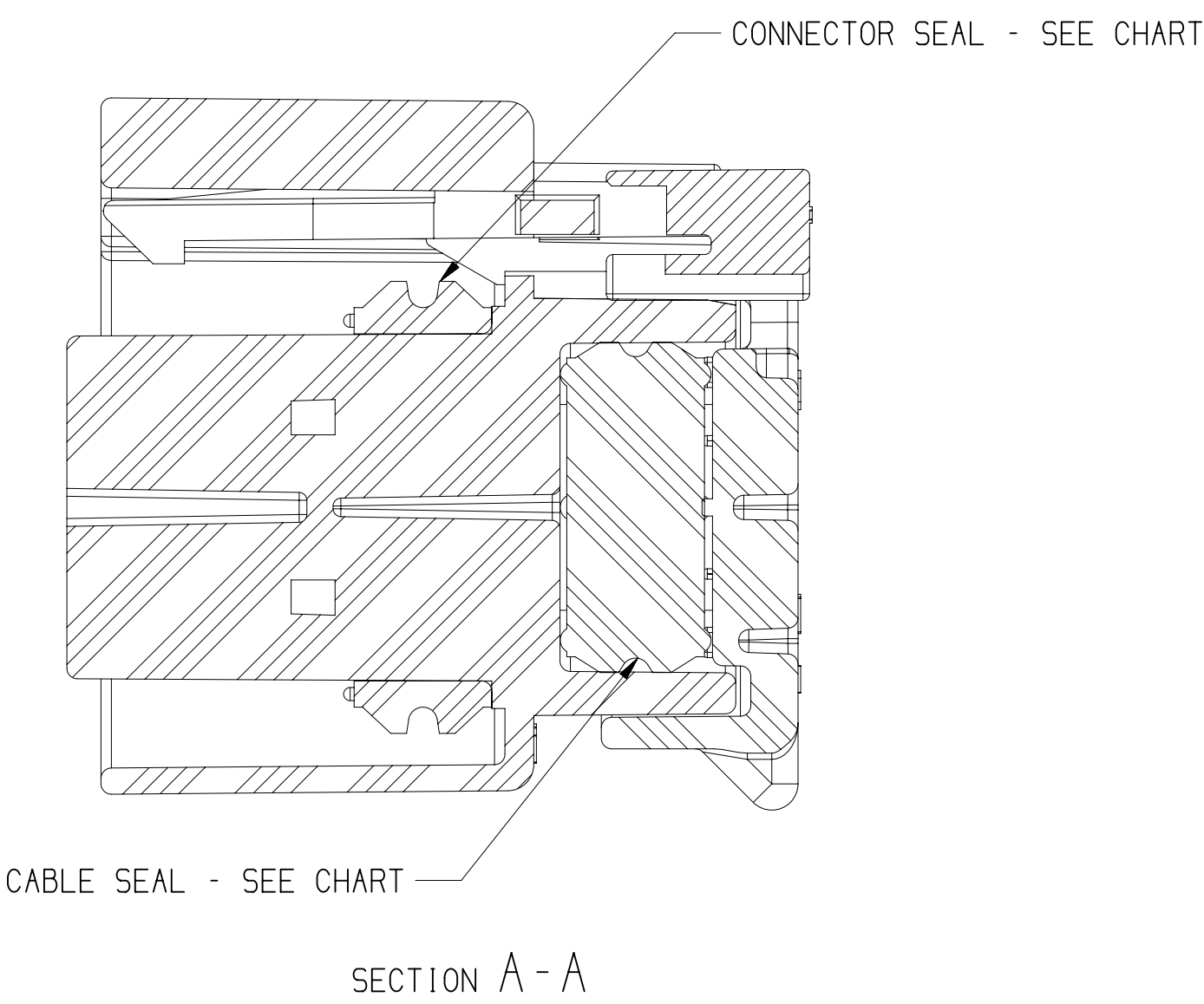
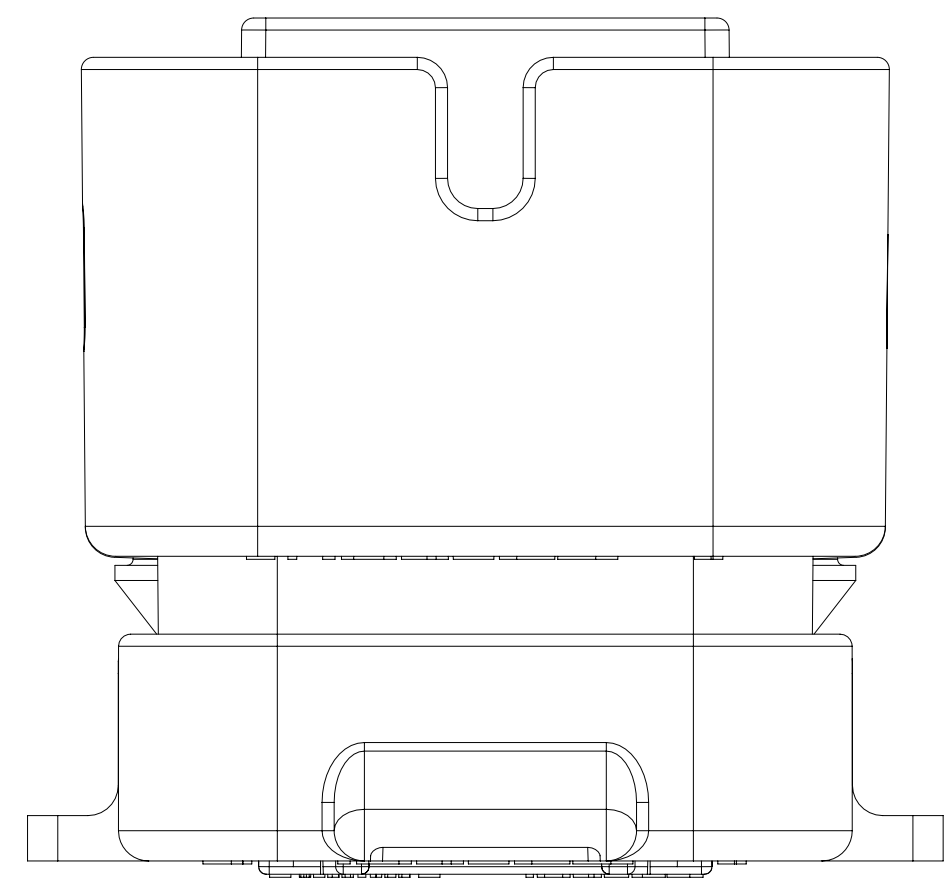
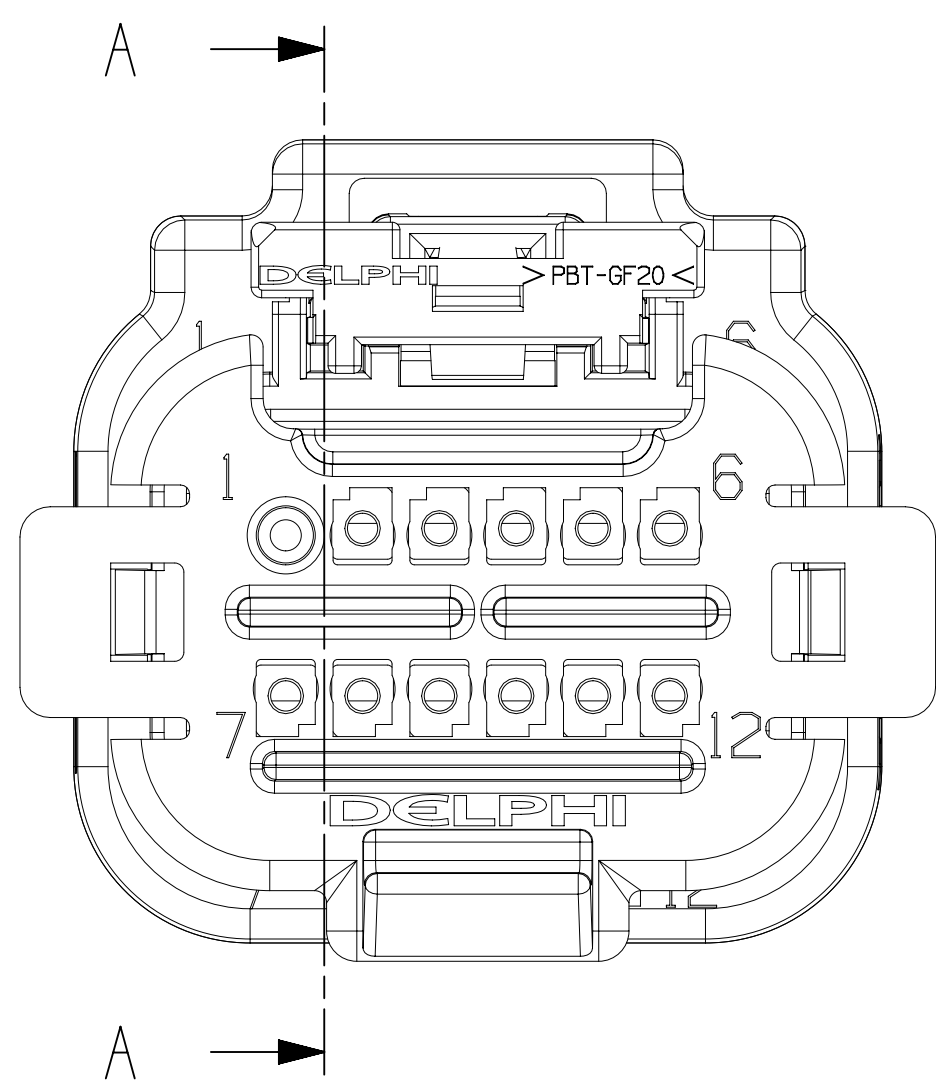
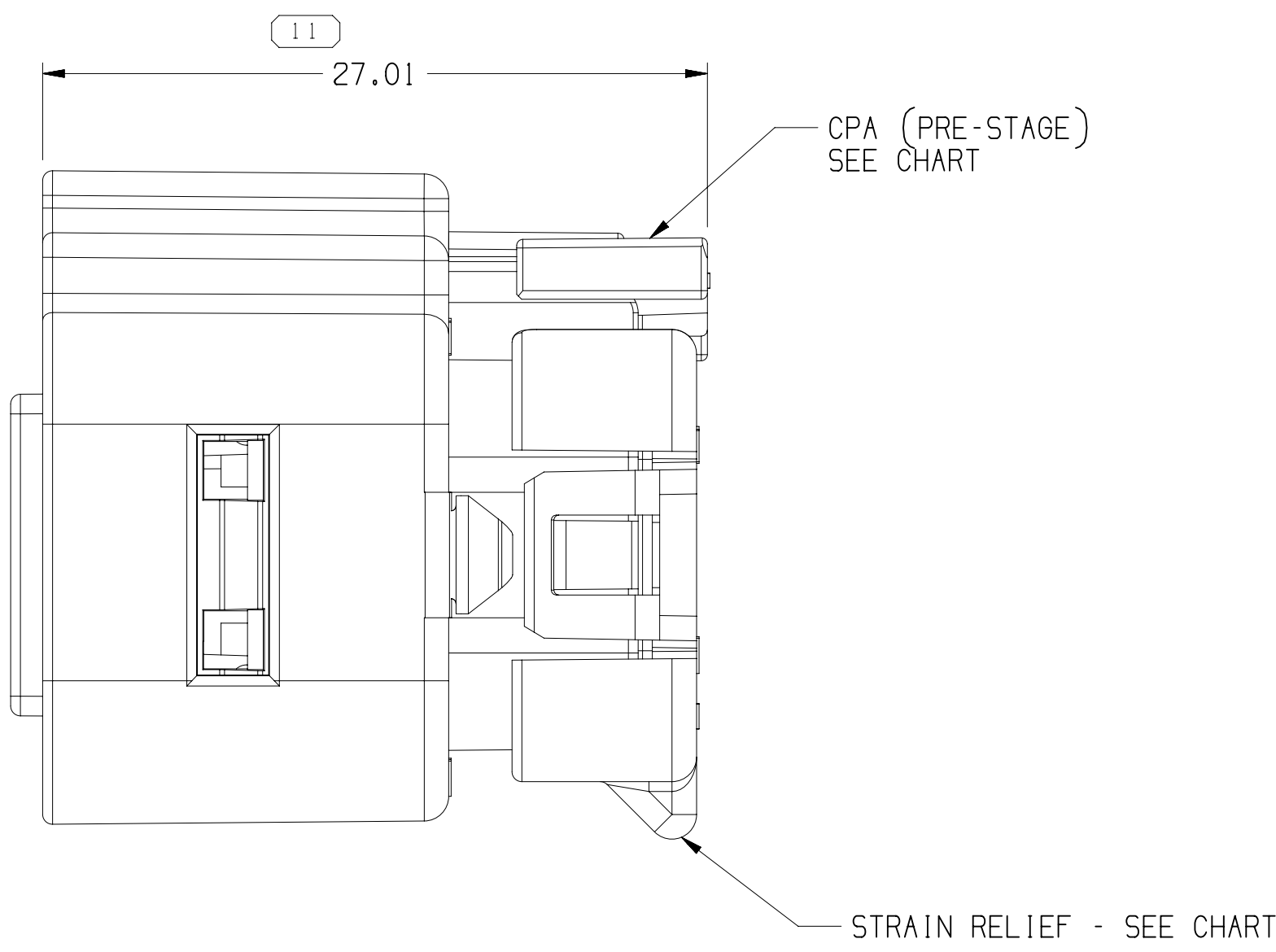
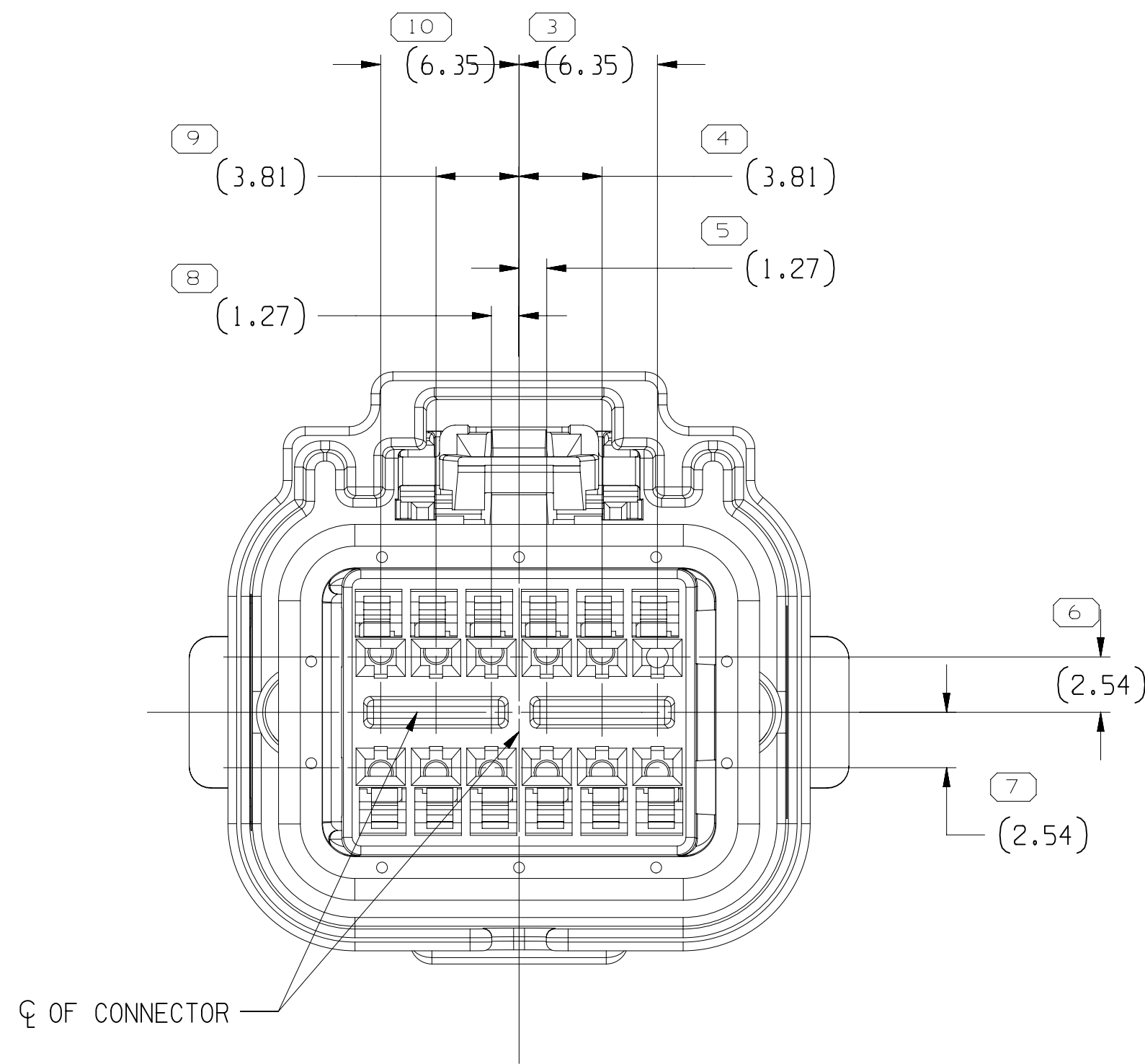
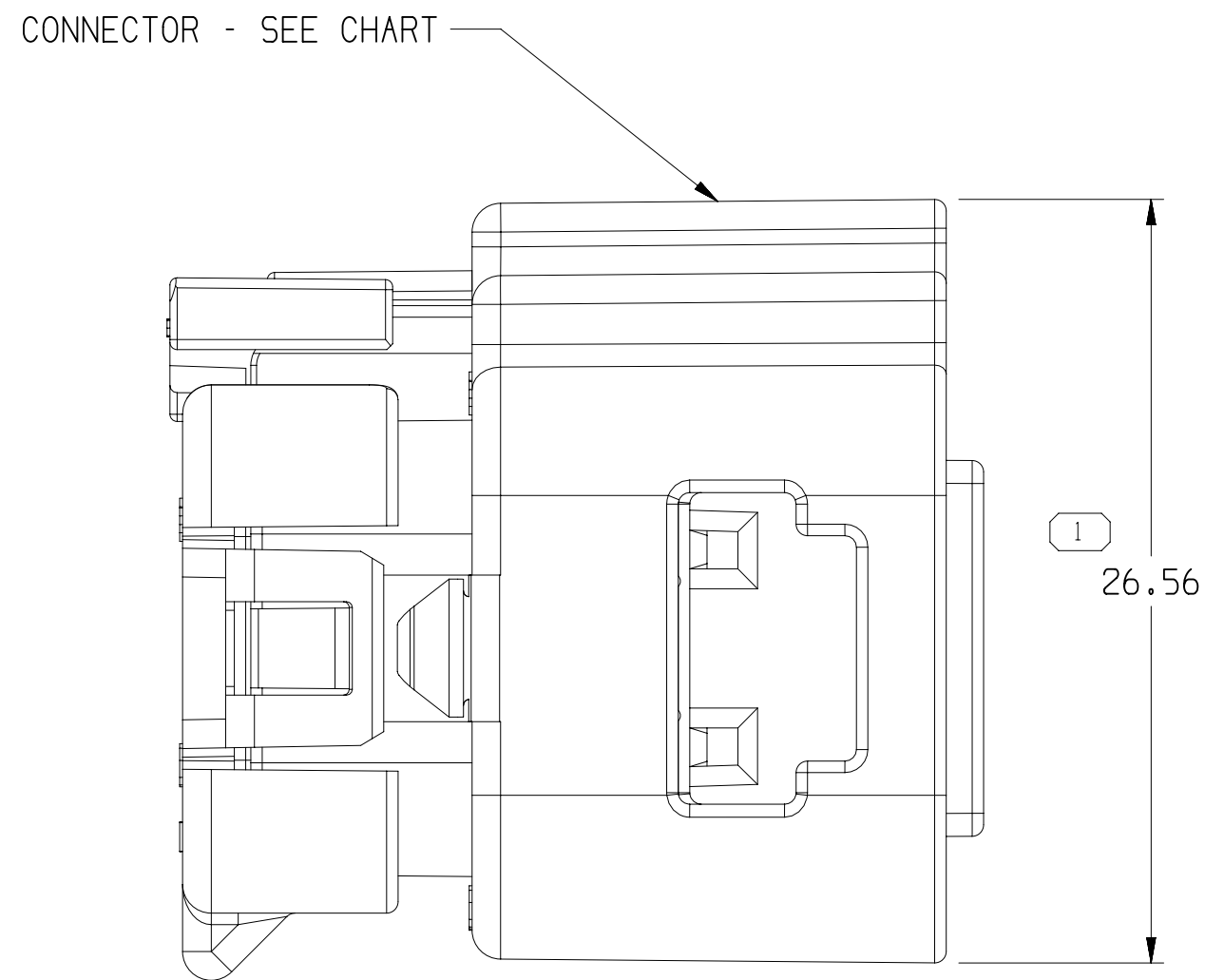
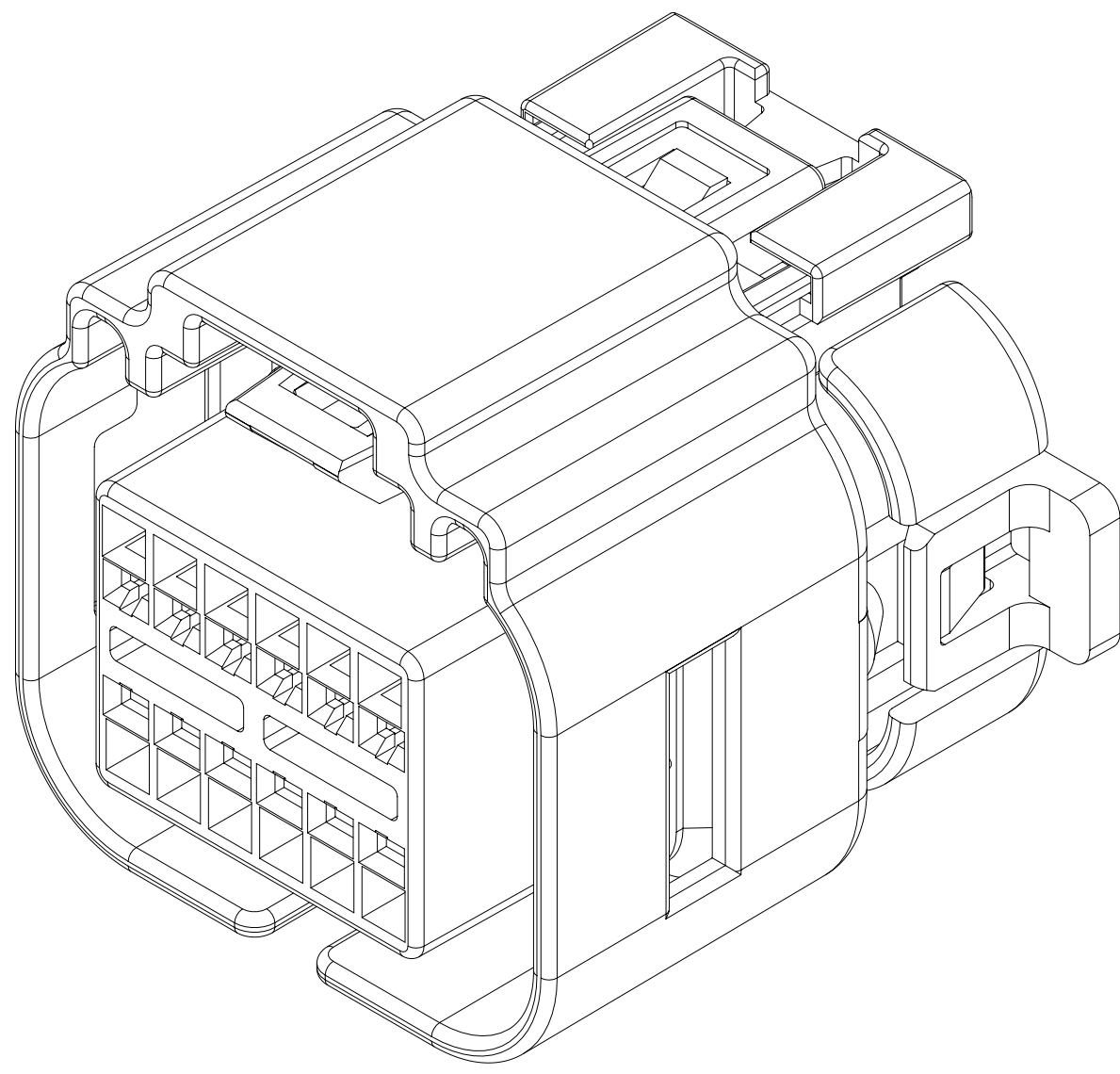
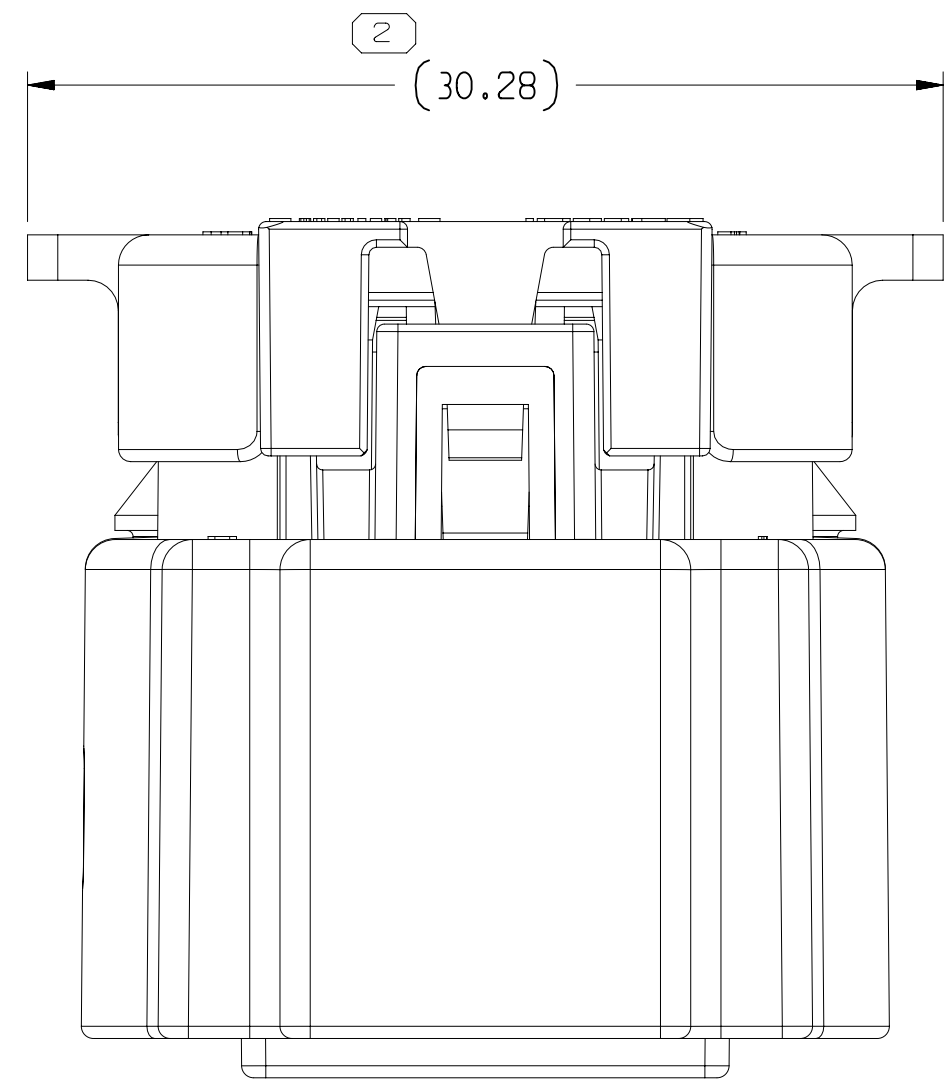


| SYMBOL DEFINITION | | MISSING SYMBOLS | |
|--|--|--------------------------|--|
| A DIMENSION WITHOUT AN INSPECTION REPORT SYMBOL DOES NOT REQUIRE INSPECTION. IT MAY BE CONTROLLED ON THE INDIVIDUAL COMPONENT DRAWING. | | NO MISSING SYMBOL NUMBER | |
| TOTAL NO OF INSPECTIONS REQUIRED | | 11 | |
| LAST NO. USED | | 11 | |

| DWS STATUS | | | | REVISION HISTORY | | | | AUTH | | DR | APVD | APVD |
|------------|-----|-----|-----|------------------|------|------------------------------------|--|--------|-----|-----|------|------|
| DATE | STG | REV | N/P | CHG | ZONE | | | | | | | |
| 14JL15 | R | 01 | - | - | | RELEASED PART DRAWING | | 430178 | AGC | JVM | VHG | |
| 03MR16 | R | 01 | AA | - | | DELETE LINE TO MAKE PART AVAILABLE | | 432171 | DSD | ZWD | JHJ | |
| 14AP21 | R | 01 | AB | - | | RELEASED PART: 33545341 | | 446620 | HZ | SBH | SBH | |



NOTES

- UNLESS OTHERWISE SPECIFIED AND/OR INDICATED:

- DIMENSIONS ARE TO FACE OF VIEW SHOWN AND AUTOMATICALLY ROUNDED BY COMPUTER FOR INSPECTION (SEE MATH MODEL FOR PRECISE DIMENSIONS). FOR ALL OTHER DIMENSIONS NOT SHOWN BUT REQUIRED FOR TOOL BUILD, SEE MATH MODEL FOR PRECISE TOOL PATH DATA.
- FOR APPLICATION DATA SEE THE APPLICATION DRAWING.
- WHEN PARTS ARE SHIPPED THEY MUST BE PACKED IN PLASTIC BAGS OR SHIPPING CONTAINERS MUST BE LINED WITH PLASTIC LINERS. BAGS OR LINERS MUST BE SEALED TO AVOID FOREIGN MATTER.
- THIS PRODUCT IS NOT CATEGORIZED AS AN APPEARANCE ITEM, MINOR IMPERFECTIONS INCLUDING, BUT NOT LIMITED TO, FLOW MARKS, COLOR BLEMISHES, GATE VESTIGE, AND SOFT FLASH THAT DO NOT AFFECT THE FIT, FORM, OR FUNCTION OF THE PART ARE PERMISSIBLE PER DPNP-4.7-CS-01.
- THIS PART IS NOT CONTROLLED FOR AUTOMATIC FEEDING.
- THE FORCE TO DISENGAGE THE SECONDARY LOCK CAN BE BETWEEN 8 AND 13N.

| | | | | | |
|----------|-----------|----------------|------------|---------------|----------|
| 35545341 | 13877791 | 13877794 | 35545339 | 13877795 | 13960982 |
| 33269315 | 13877791 | 13877794 | 13877793 | 13877795 | 13960982 |
| PART NO | CONNECTOR | CONNECTOR SEAL | CABLE SEAL | STRAIN RELIEF | CPA |

| DIMENSIONAL RANGE (MM) | | CHART | |
|--------------------------------------|------|-------|-------|
| FROM | TO | | |
| > 0 | > 20 | > 30 | > 70 |
| > 20 | > 30 | > 70 | > 100 |
| | | > 100 | > 150 |
| | | > 150 | > 200 |
| | | > 200 | > 250 |
| | | > 250 | > 300 |
| | | > 300 | > 400 |
| TOLERANCE UNLESS OTHERWISE SPECIFIED | | | |
| ±0.15 | ±0.2 | ±0.3 | ±0.4 |
| | | ±0.5 | ±0.6 |
| | | ±0.8 | ±1 |
| | | | ±1.2 |
| ANGULAR TOLERANCE 12° | | | |