
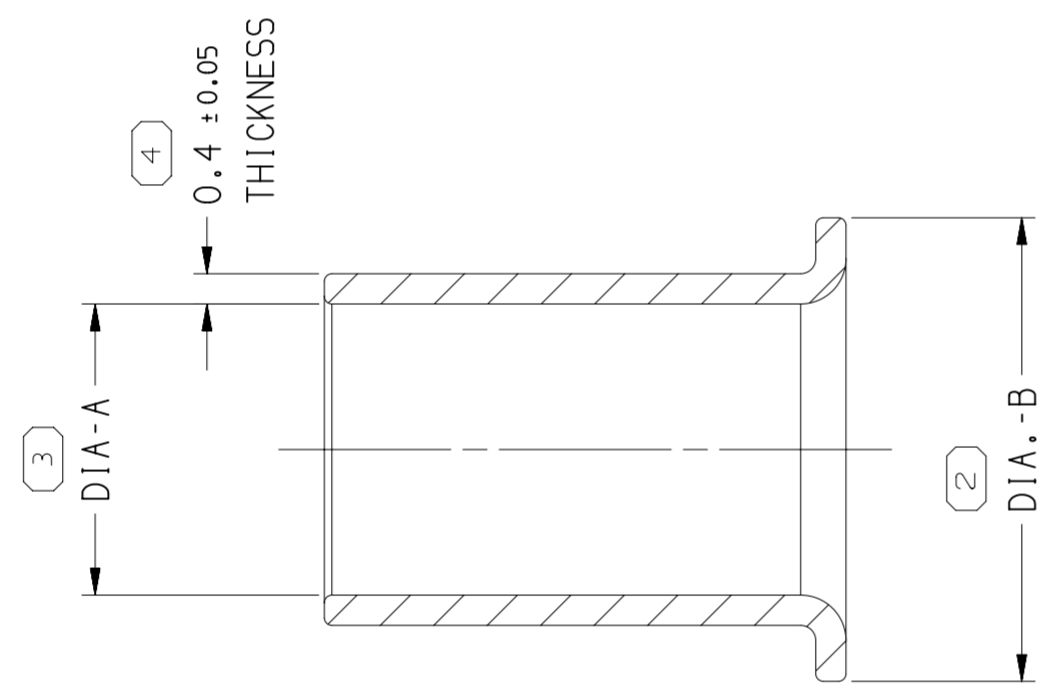
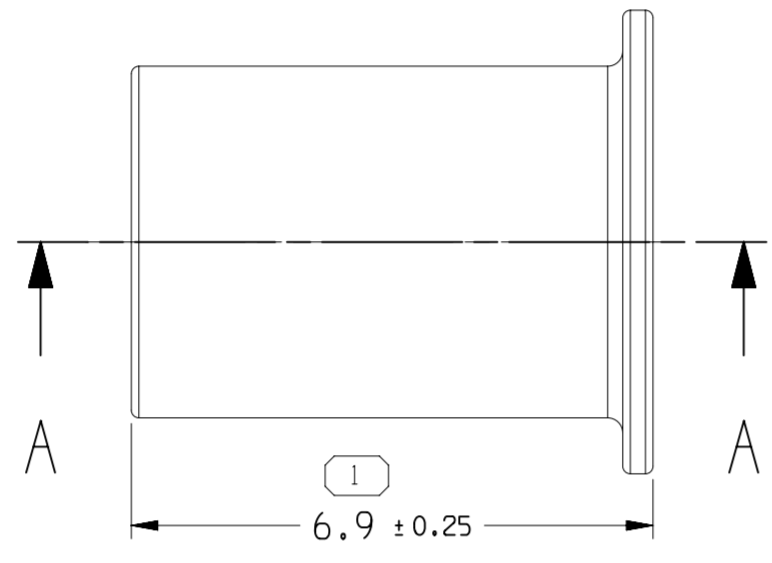
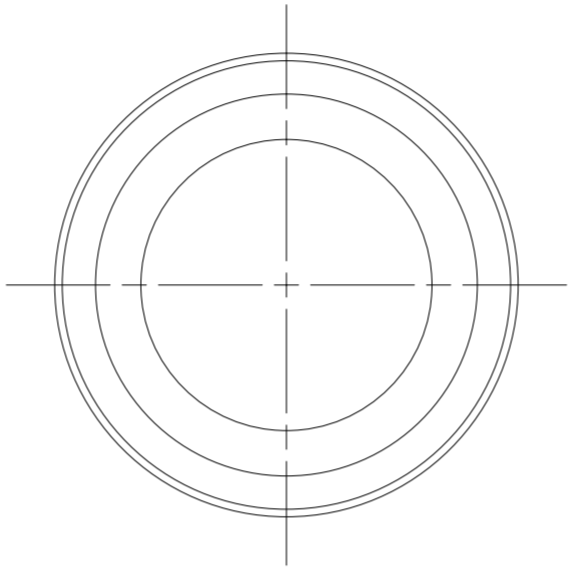
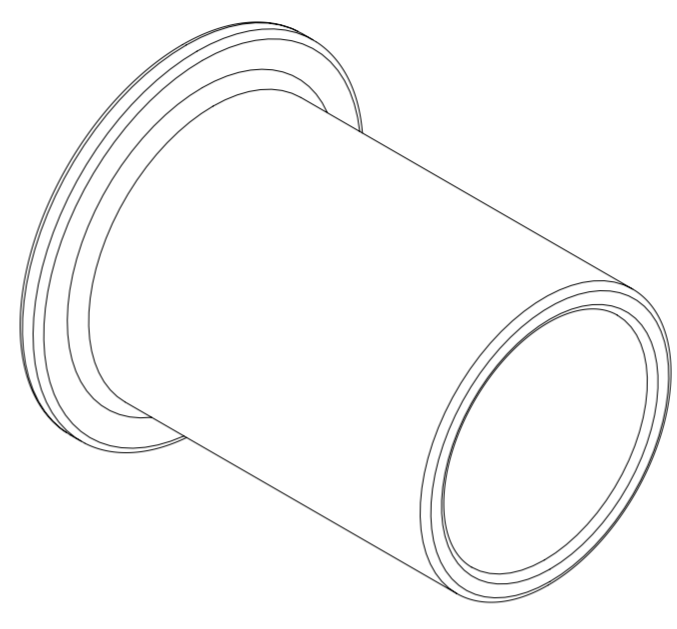


SYMBOL DEFINITION		TOTAL NO OF INSPECTIONS REQUIRED	
A DIMENSION WITHOUT AN INSPECTION REPORT SYMBOL  DOES NOT REQUIRE INSPECTION. IT MAY BE CONTROLLED ON THE INDIVIDUAL COMPONENT DRAWING.		4	
	LAST NO. USED	4	

MISSING SYMBOLS		DWG STATUS				REVISION HISTORY				AUTH		DR		APVD	
NO MISSING SYMBOL NUMBER		DATE	STG	REV	N/P	CHG	ZONE								
		23SE19	R	01	-	-		CREATED PART DRAWING				444580	WZM	TY	WZM
		16DE19	R	02	-	-		UPDATED ATTRIBUTE				444947	WZM	TY	WZM
		09AU22	R	03	-	-		ADDED PART NUMBER - 35665798, 35665782				447992	VA	DY	TY



SECTION A - A

NOTES:

- UNLESS OTHERWISE SPECIFIED AND/OR INDICATED:
DIMENSIONS ARE TO FACE OF VIEW SHOWN AND AUTOMATICALLY ROUNDED BY COMPUTER FOR INSPECTION (SEE MATH MODEL FOR PRECISE DIMENSIONS). FOR ALL OTHER DIMENSIONS NOT SHOWN BUT REQUIRED FOR TOOL BUILD, SEE MATH MODEL FOR PRECISE TOOL PATH DATA.
- THIS PART USED IN ASSEMBLY DRAWING: 35214364.
- PLATING: THICKNESS OF MATTE TIN SHALL BE 2µm - 5µm PER ASTM B-545.
- PART MUST BE FREE OF MICRO CRACK, BURRS, SHARP EDGE, OIL, GREASE OR OTHER CONTAMINANTS.
- ALL DIMENSIONS ARE AFTER PLATING.
- COMPONENTS MUST BE PACKAGED IN A SEALED BAG.

PART NO	REV	MATERIAL	DIA-A	DIA-B	CABEL SIZE	VOLUME CM ³
35665782	01	COPPER	∅ 4.15±0.1	∅ 6.43±0.1	M6488 4mm ²	0.043
35665798	01	COPPER	∅ 3.85±0.1	∅ 6.13±0.1	M6488 3mm ²	0.040
35236786	01	COPPER	∅ 4.65±0.1	∅ 6.93±0.1	M6488 5mm ²	0.048
35236784	01	COPPER	∅ 4.50±0.1	∅ 6.70±0.1	JASO 3mm ²	0.046
35236785	01	COPPER	∅ 4.15±0.1	∅ 6.43±0.1	M6488 4mm ²	0.043
35242858	01	COPPER	∅ 3.85±0.1	∅ 6.13±0.1	M6488 3mm ²	0.040

LINE DRAWN THROUGH A PART NUMBER INDICATES THAT PHYSICAL PARTS ARE NOT AVAILABLE FOR ORDERING.

PART NUMBERS THAT DO NOT HAVE A LINE PRESENT INDICATE THAT PHYSICAL PARTS ARE AVAILABLE FOR ORDERING.

CONTACT APTIV SALES TO ASSURE AVAILABILITY OF PARTS.

DWG TYPE: PART DRAWING

STYLE: [Symbol]

VOLUME (CM³): [Symbol]

DISTR CODE: D

UNLESS OTHERWISE SPECIFIED THIS DOCUMENT IS IN ACCORDANCE WITH ASME Y14.5-2009. SEE DELPHI ENGINEERING DESIGN STANDARD B6 2017 FOR ISO 1101:2004 RECONCILIATION REQUIREMENTS.

ALL DIMENSIONS ARE IN MILLIMETERS

THIRD ANGLE PROJECTION

DO NOT SCALE

USE MATH DATA

NX

• APTIV •

CONNECTION SYSTEMS
Chennai, India
COPYRIGHT 2019 APTIV. ALL RIGHTS RESERVED.

THIS DRAWING IS THE PROPERTY OF APTIV AND CONTAINS APTIV CONFIDENTIAL INFORMATION. THE REPRODUCTION, DISTRIBUTION AND UTILIZATION OF THIS DOCUMENT OR ITS RELATED CAD MATH DATA, AS WELL AS COMMUNICATION OF ANY CONTENT TO OTHERS, WITHOUT EXPRESS AUTHORIZATION, IS PROHIBITED.

DR	DATE
APVD1: WENZHENG MA	23SE19
APVD2: TIMON YU	23SE19
APVD3: WENZHENG MA	23SE19
APVD4:	
APVD5:	

SUBSTANCES OF CONCERN AND RECYCLED CONTENT PER APTIV 10949001

MATERIAL: SEE CHART

DRAWING NAME: TAXI SLEV SHIELD ID= OD=

DRAWING NUMBER: 35236754

SIZE	SCALE	FRAME NO	SHEET NO	STG	REV	N/P
A1	10:1	1 OF 1	1 OF 1	R	03	-

DIMENSIONAL RANGE (MM)		CHART M	
FROM	TO		
> 0	> 6	> 30	> 70
> 6	> 30	> 70	> 120
> 30	> 70	> 120	> 160
> 70	> 120	> 160	> 200
> 120	> 160	> 200	> 250
> 160	> 200	> 250	> 315
> 200	> 250	> 315	> 400

TOLERANCE UNLESS OTHERWISE SPECIFIED

TOLERANCE	±0.1	±0.2	±0.3	±0.4	±0.45	±0.55	±0.7	±0.85	±1.05
ANGULAR TOLERANCE	±1°								