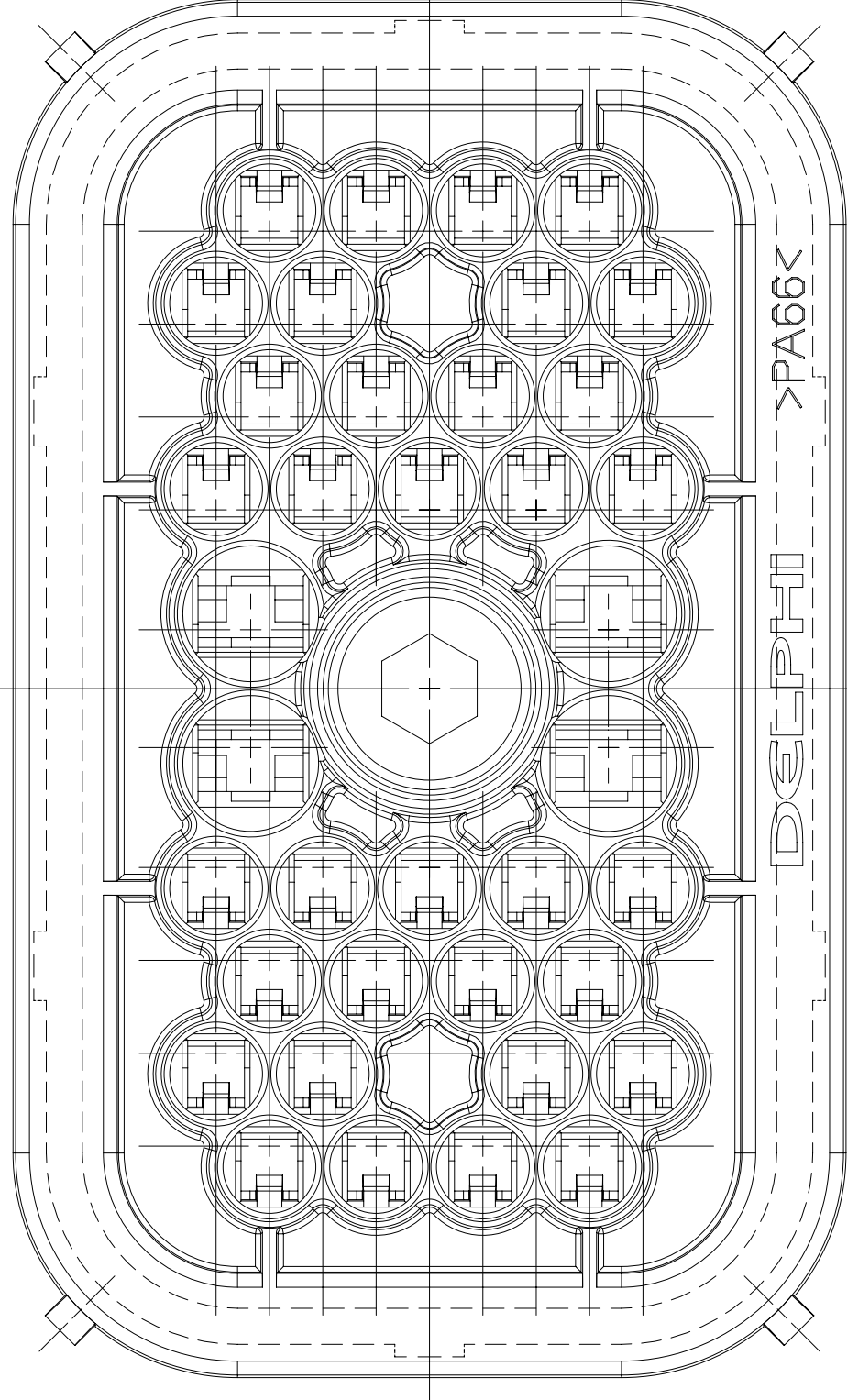
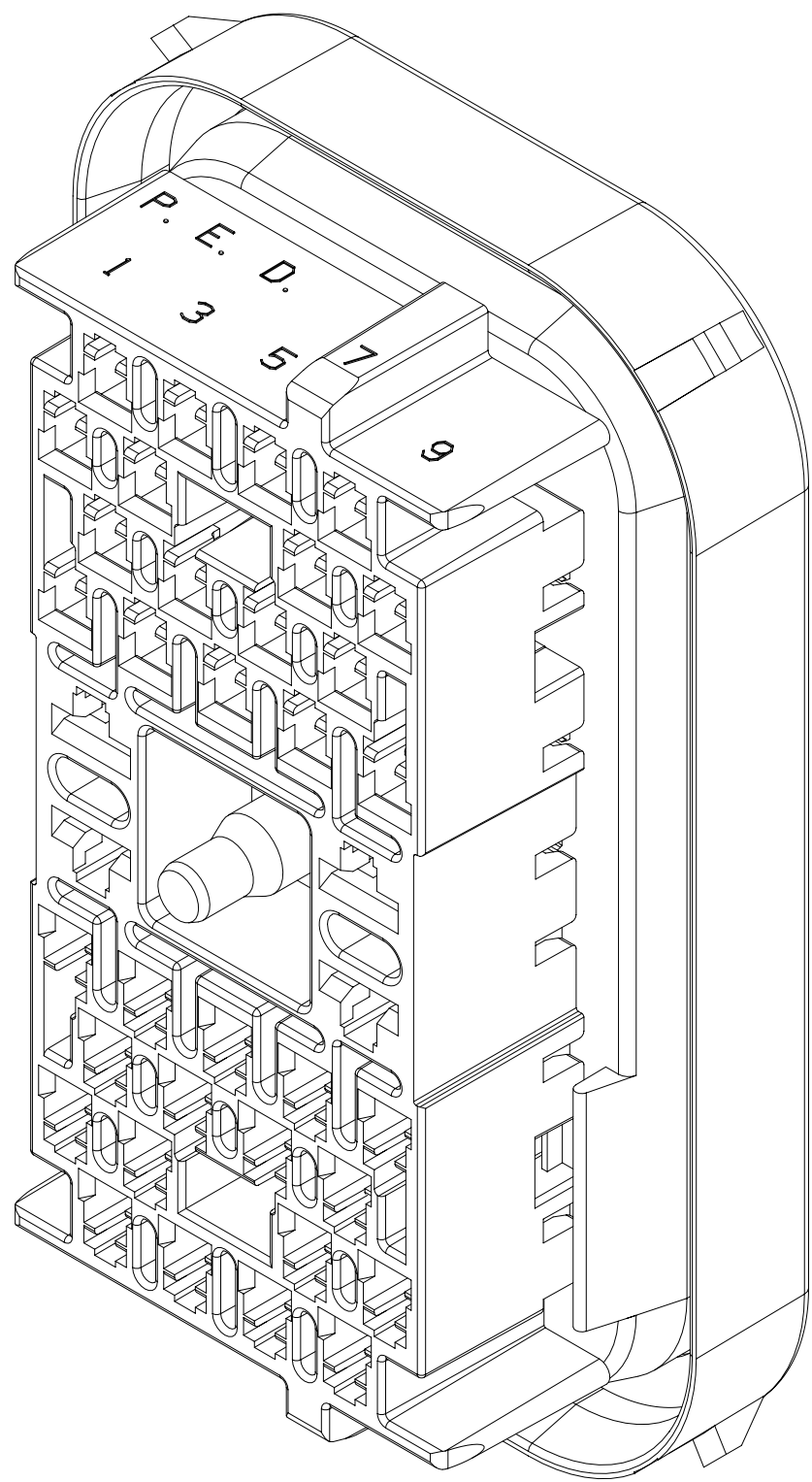
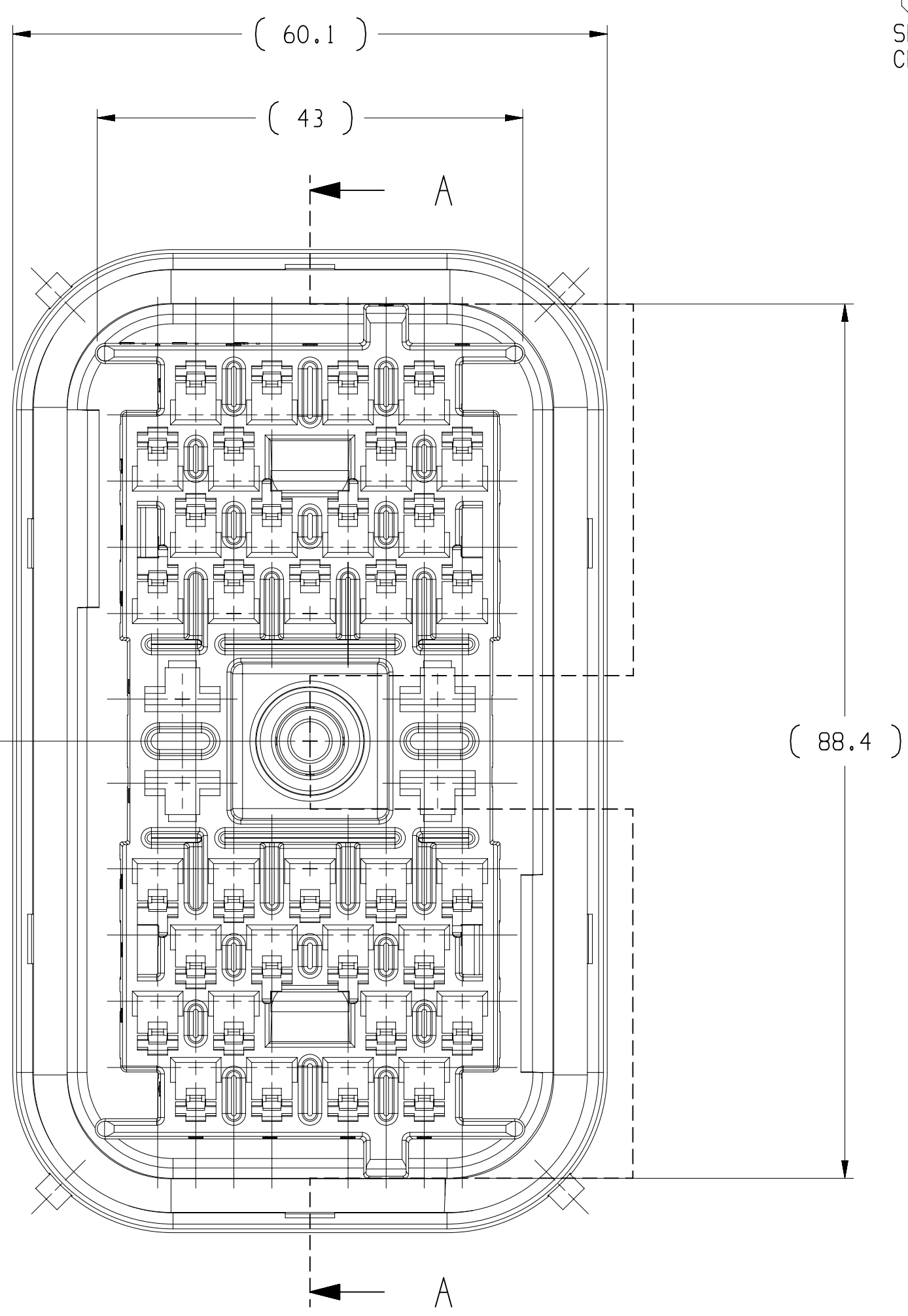


SYMBOL DEFINITION		MISSING SYMBOLS	
A DIMENSION WITHOUT AN INSPECTION REPORT SYMBOL ○ DOES NOT REQUIRE INSPECTION. IT MAY BE CONTROLLED ON THE INDIVIDUAL COMPONENT DRAWING.	TOTAL NO OF INSPECTIONS REQUIRED	NO MISSING SYMBOL NUMBER	
	LAST NO. USED		
	9		
	9		

DWG STATUS		ZONE		REVISION HISTORY		AUTH		DR		APVD	
DATE	STG	REV	N/P	CHG							
21DE99	R	001	-	-	ALL PARTS - ADDED DIM, ADDED LABEL & NOTE & REMOVED NOTES.	198142	DAA	GMC	DN		
21DE99	R	002	-	-	ALL PARTS - ADDED SYMBOLS (7 PLCS) & REVISED NOTE	198170	DAA	GMC	DN		
21DE99	R	003	-	-	ALL PARTS - 49.99 +1.35/-0.64 WAS Ø0.64	198187	DAA	GMC	DN		
26JA00	R	004	-	-	ALL PARTS - 50 +1.3/-0.6 WAS 49.99 +1.35/-0.64 & REMOVED 45.55 Ø0.15 DIM	199266	DAA	GMC	DN		
14JN04	R	05	-	-	15324303 - OBSOLETE AND ADDED NOTE 8	253207	ESH	JVM	SAN		
25MY04	R	06	-	-	12191499 - RESTRICTED & 15492642 - RELEASED	256336	CTR	FRG	MGR		
07AP05	R	07	-	-	15492642 & 12191499 - REVISED NOTE 6	266596	MDH	JAA	WTM		
02NO05	R	08	-	-	12191499 - OBSOLETE	273876	BLG	JVM	MGR		
25JL07	R	09	-	-	ADDED NON-APPEARANCE NOTE, REMOVED BLACK BOX NOTE & ADHESIVE NOTE FROM DIM 6, REVISED NOTE 3 & DIMS (8 PLCS)	401952	DB	DB	BDO		
11SE08	R	10	-	-	ALL ACTIVE PARTS - ADDED RETAINER MUST WITHSTAND NOTE	406076	MDH	FKV	WTM		
21AP15	R	11	-	-	15492642 - UPDATED MOUN WASHER	429342	JVR	JVM	JBR		
30AP21	R	12	-	-	15492642 - ADDED "TORQUE" NOTE	554198	AHY	JAA	JVP		



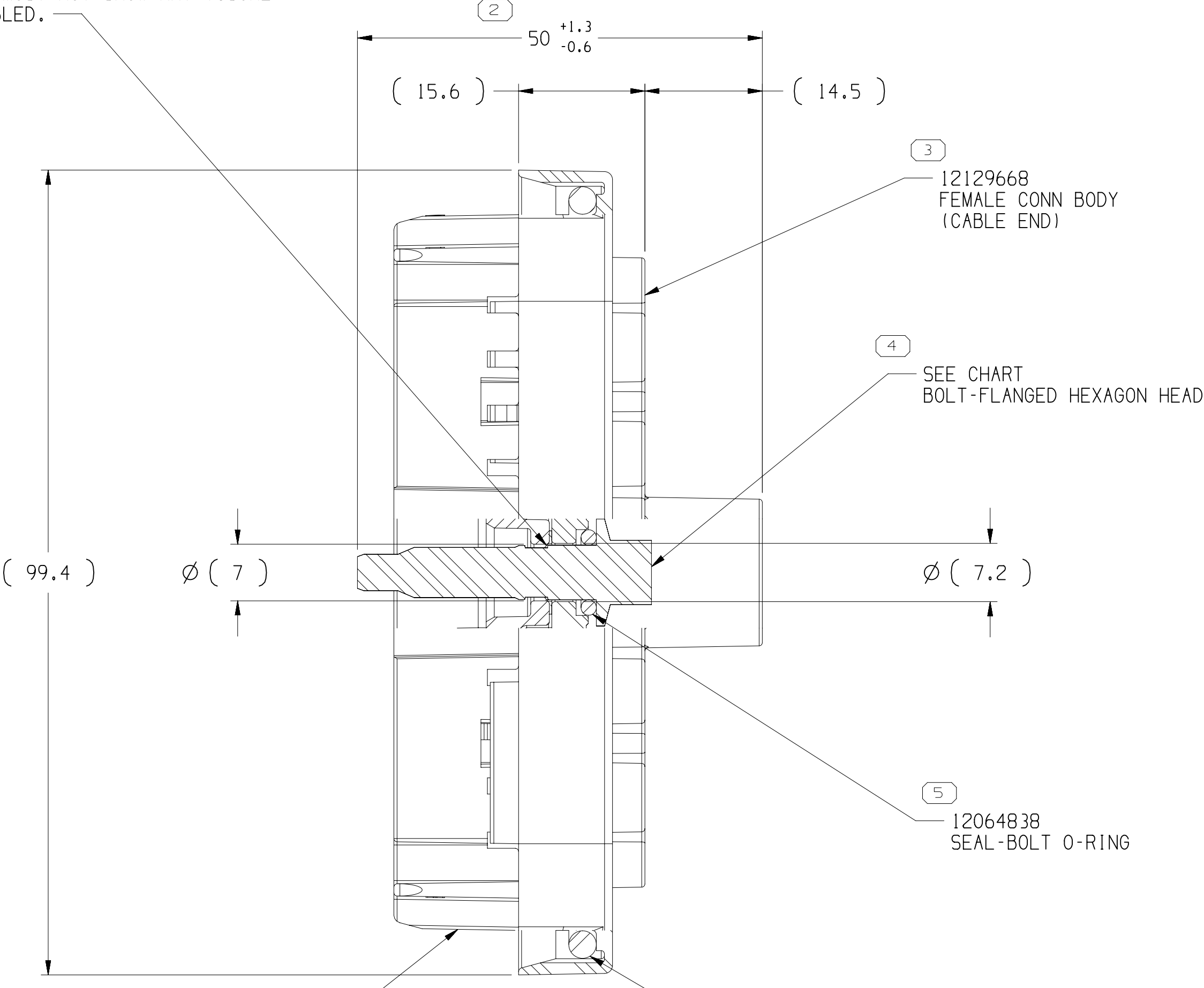
CABLE END



TERMINAL END

TYPE 101

1 SEE CHART - MOUN WASHER. MUST NOT SHOW ANY VISUAL CRACKS AFTER BEING ASSEMBLED.



SECTION A - A

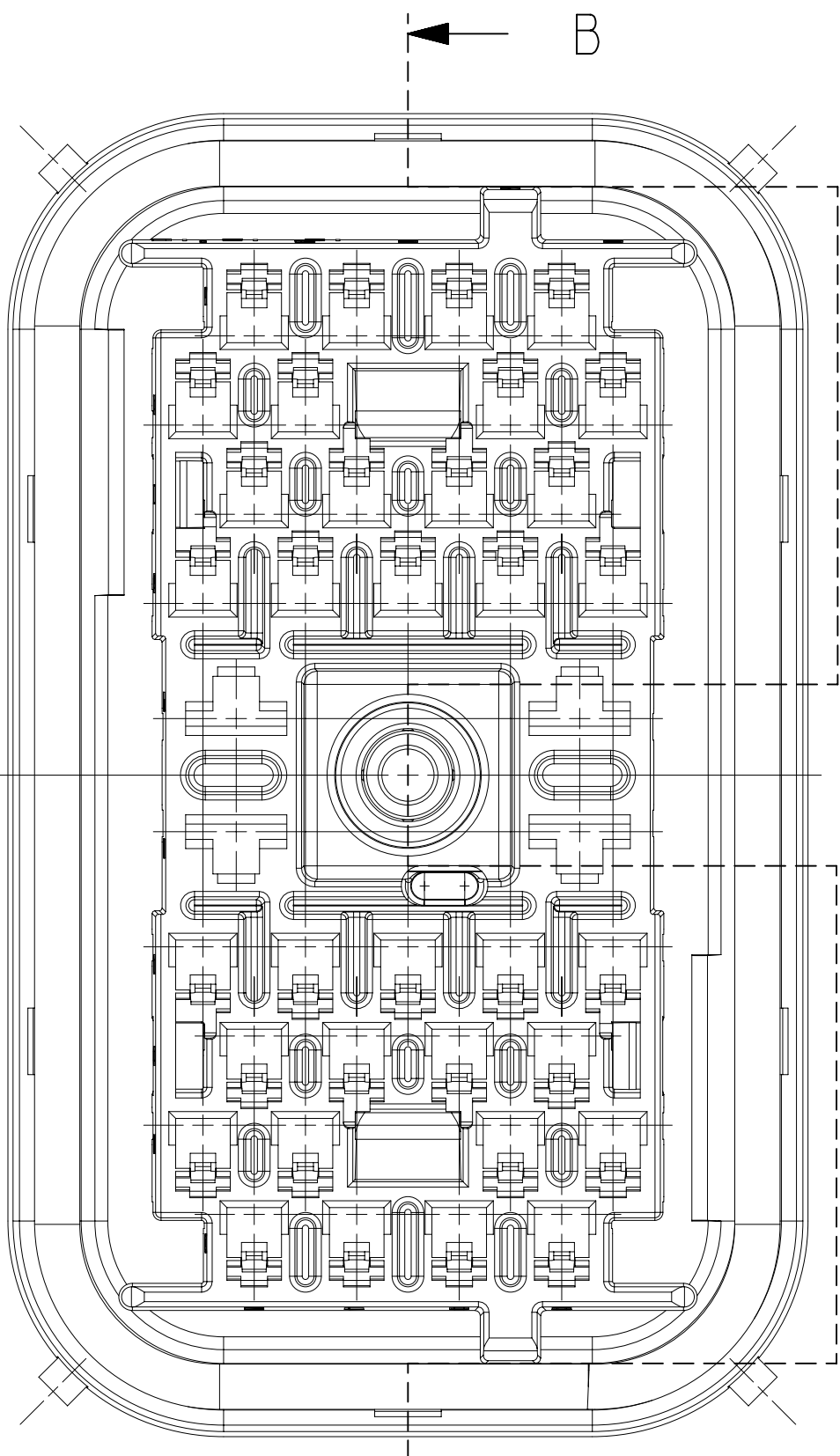
12129672 - SHROUD SEAL

12129667 FEMALE CONN BODY (TERMINAL END)

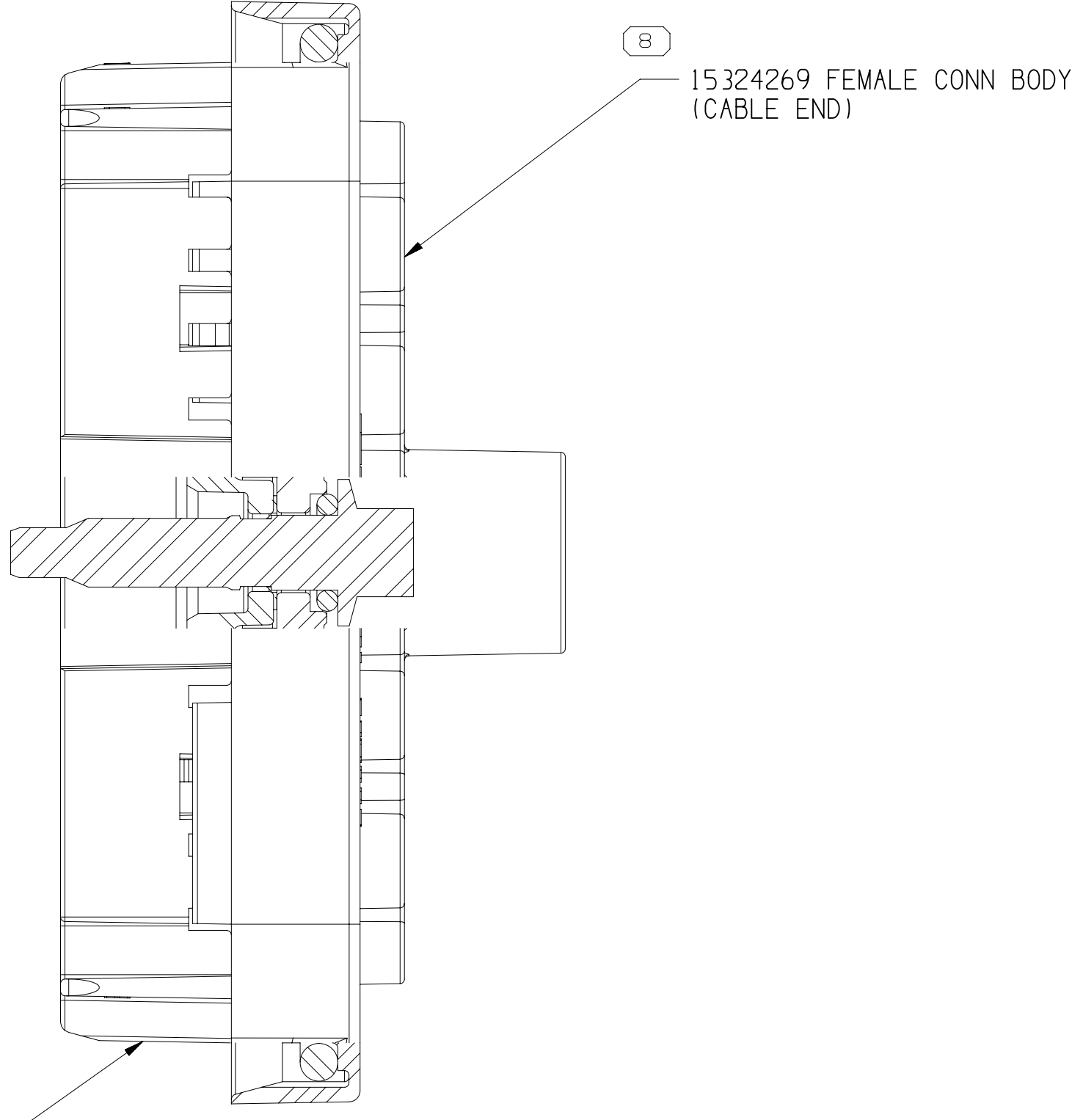
12129668 FEMALE CONN BODY (CABLE END)

SEE CHART BOLT-FLANGED HEXAGON HEAD

12064838 SEAL-BOLT O-RING



TYPE 102
SAME AS TYPE 101
EXCEPT AS SHOWN



SECTION B - B

15324268 FEMALE CONN BODY (TERMINAL END)

15324269 FEMALE CONN BODY (CABLE END)

NOTES

- UNLESS OTHERWISE SPECIFIED AND/OR INDICATED:
DIMENSIONS ARE TO FACE OF VIEW SHOWN AND AUTOMATICALLY ROUNDED BY COMPUTER FOR INSPECTION. (SEE MATH MODEL FOR PRECISE DIMENSIONS.) FOR ALL OTHER DIMENSIONS NOT SHOWN BUT REQUIRED FOR TOOL BUILD, SEE MATH MODEL FOR PRECISE TOOL PATH DATA.
- WHEN PARTS ARE SHIPPED THEY MUST BE PACKED IN PLASTIC BAGS OR SHIPPING CONTAINERS MUST BE LINED WITH PLASTIC LINERS. BAGS OR LINERS MUST BE SEALED TO AVOID ENTRY OF FOREIGN MATTERS.
- DESIGN WILL PASS SALT FOG AND IMMERSION TEST AFTER CONDITIONING AS SPECIFIED IN ESA-710 (METRI-PACK), ETC. - WHEN MATED TO MATING PART OR EQUIVALENT.
- THIS PART IS NOT CONTROLLED FOR AUTOMATIC FEEDING.
- THIS PRODUCT IS NOT CATEGORIZED AS AN APPEARANCE ITEM, MINOR IMPERFECTIONS INCLUDING, BUT NOT LIMITED TO, FLOW MARKS, COLOR BLEMISHES, GATE VESTIGE, AND SOFT FLASH THAT DO NOT AFFECT THE FIT, FORM, OR FUNCTION OF THE PART ARE PERMISSIBLE PER EANP-4-3-CS-01-EN.
- OBSOLETE PART(S) CONTAINS A HEXAVALENT CHROME COATING. DO NOT USE THIS PART ON NEW APPLICATIONS. HEXAVALENT CHROME IS A BANNED SUBSTANCE. IF THIS PART IS REQUIRED FOR CURRENT OR FUTURE BUSINESS OR FOR SERVICE REQUIREMENTS, CONTACT THE PRODUCT LINE ENGINEER OR MATERIALS ENGINEERING TO GET A NEW PART THAT IS FREE FROM HEXAVALENT CHROME. EXISTING INVENTORY OF THIS PART MAY BE USED UNTIL JULY 1, 2007 FOR SERVICE REQUIREMENTS.
- FOR APPLICATION DATA SEE THE INDIVIDUAL APPLICATION DRAWINGS.
- RETAINER MUST WITHSTAND A MINIMUM FORCE OF 805 N APPLIED AXIALLY TO THE THREADED END OF THE BOLT.
- THIS ASSEMBLY IS TO BE BOLTED TO CONNECTOR WITH A TORQUE ON THE BOLT OF 5.6 Nm TO 7.9 Nm

15492642	01	AE	101	15492621	15492512
15324303	A5	-	102	12160585	12004737
12191499	A10	-	101	12160585	12004737
PART NO	REV	N/P	TYPE	BOLT	MOUN WASHER

DIMENSIONAL RANGE (MM)		CHART	
FROM	TO	20	300
20	30	30	300
30	40	40	300
40	50	50	300
50	60	60	300
60	70	70	300
70	80	80	300
80	90	90	300
90	100	100	300
100	110	110	300
110	120	120	300
120	130	130	300
130	140	140	300
140	150	150	300
150	160	160	300
160	170	170	300
170	180	180	300
180	190	190	300
190	200	200	300
200	210	210	300
210	220	220	300
220	230	230	300
230	240	240	300
240	250	250	300
250	260	260	300
260	270	270	300
270	280	280	300
280	290	290	300
290	300	300	300

A LINE DRAWN THROUGH A PART NUMBER INDICATES THAT PHYSICAL PARTS ARE NOT AVAILABLE FOR ORDERING.	
PART NUMBERS THAT DO NOT HAVE A LINE PRESENT INDICATE THAT PHYSICAL PARTS ARE AVAILABLE FOR ORDERING.	
CONTACT APTIV SALES TO ASSURE AVAILABILITY OF PARTS.	
DWG TYPE	
PART DRAWING	
STYLE	
VOLUME (CM)	
DISTR CODE	
UNLESS OTHERWISE SPECIFIED	
THIS DOCUMENT IS IN ACCORDANCE WITH ASME Y14.5M-1994 AS MODIFIED BY THE GM GLOBAL DIMENSIONING AND TOLERANCING ADDENDUM-2003. SEPARATE PATTERNING OF FEATURES MAY BE ORDERED SEPARATELY REGARDLESS OF DATUM REFERENCES.	
ALL DIMENSIONS ARE IN MILLIMETERS	
REFERENCE	
THIRD ANGLE PROJECTION	
DO NOT SCALE	
USE MATH DATA	
NX	
DRAWING NUMBER	
15324306	
SIZE	
A0	
SCALE	
2:1	
FRAME NO	
1 OF 1	
SHEET NO	
1 OF 1	
STG	
REV	
12	