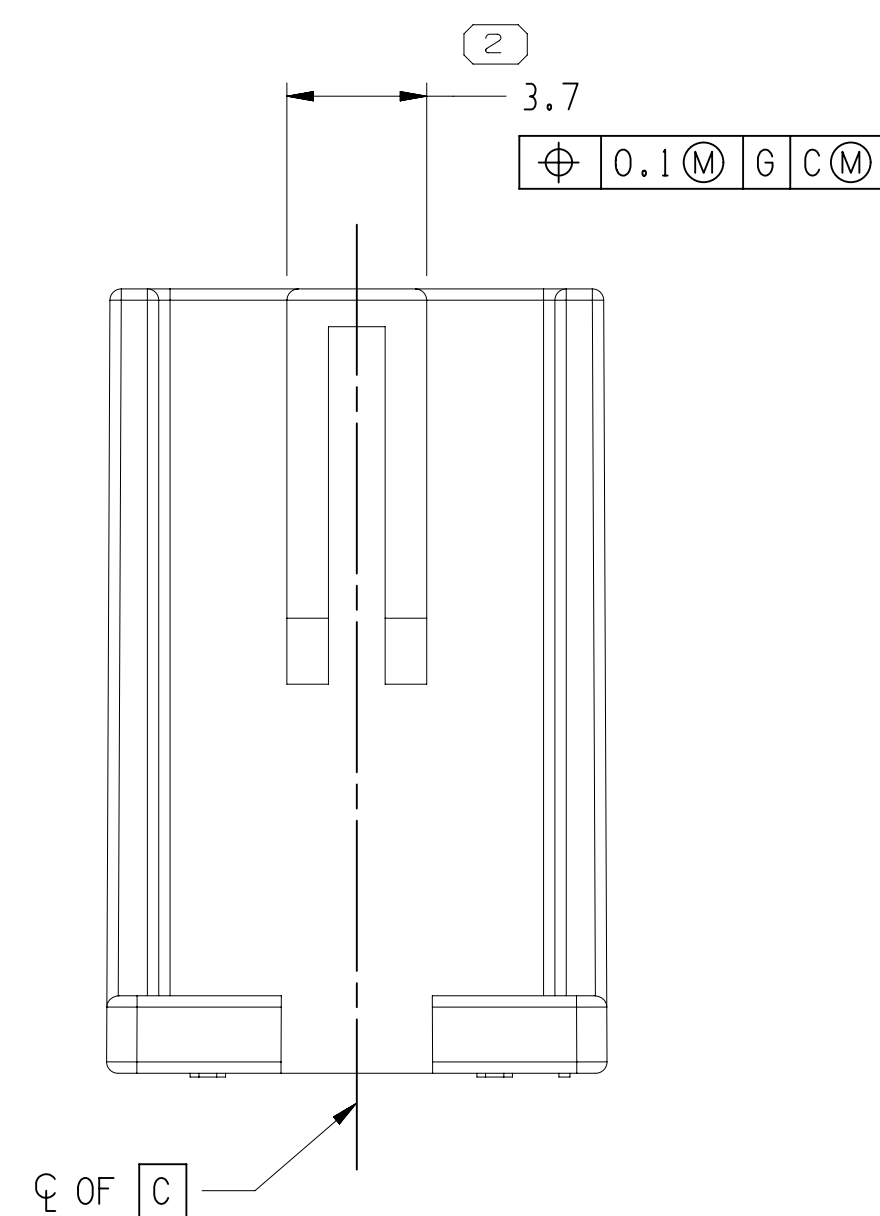
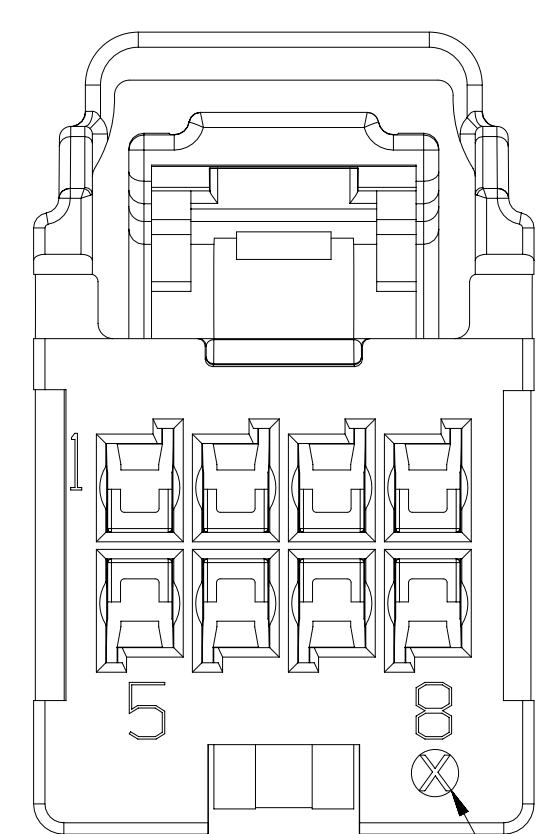
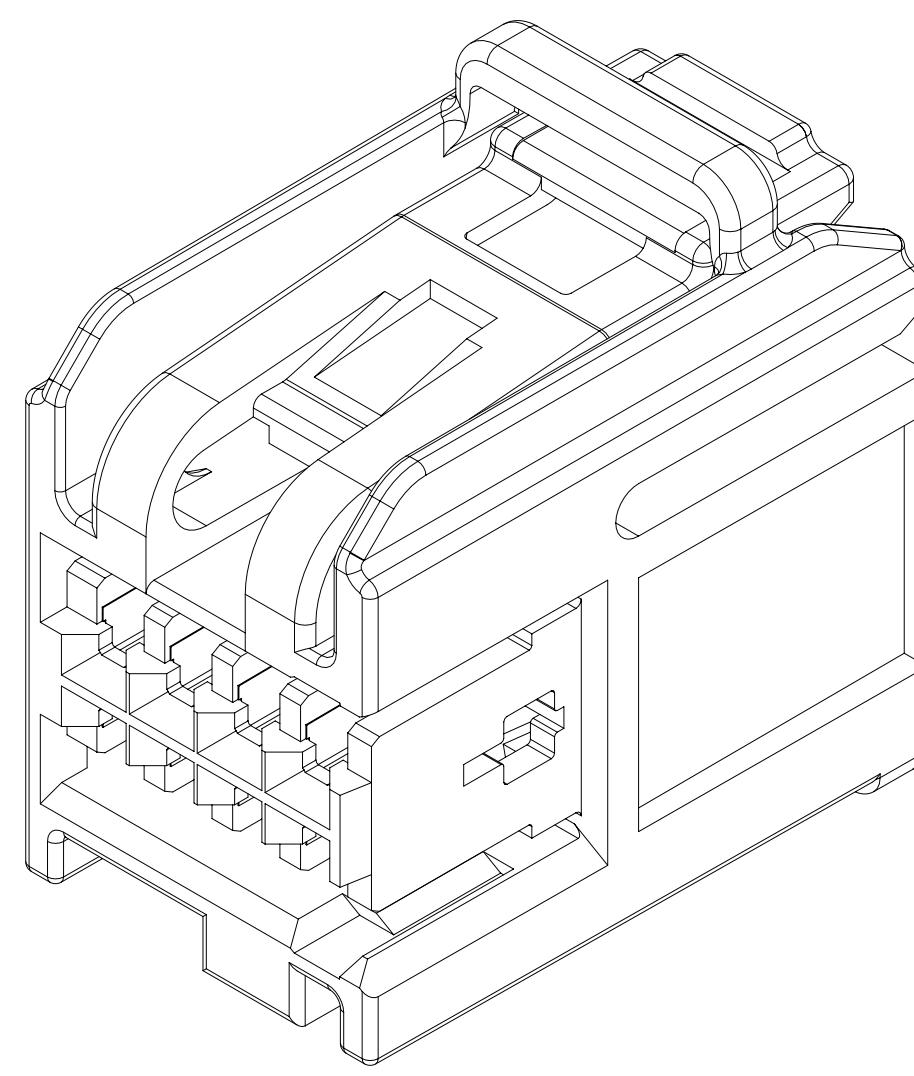
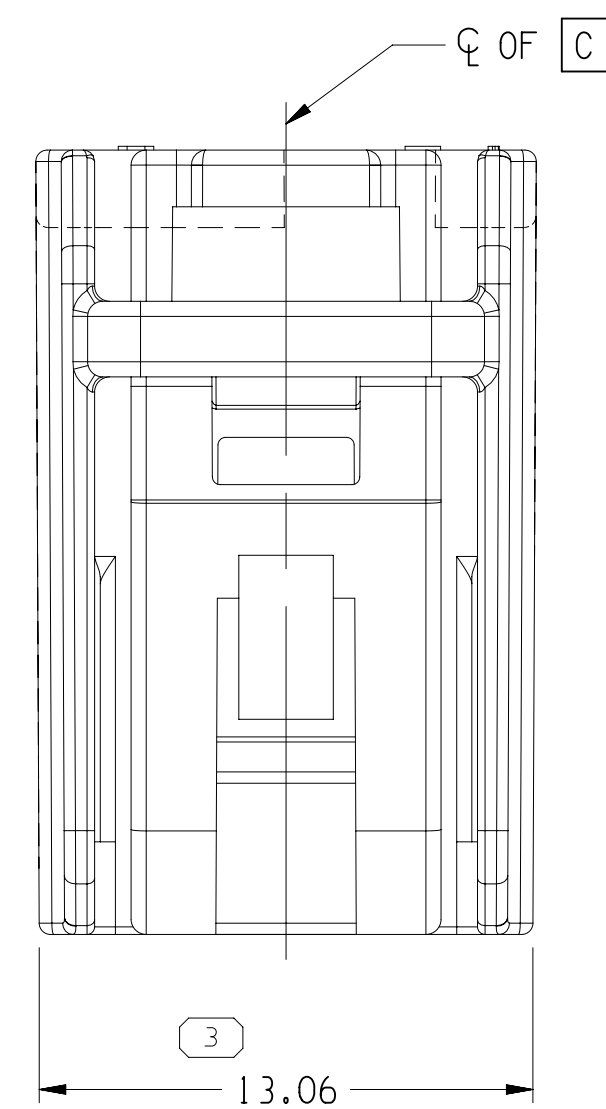


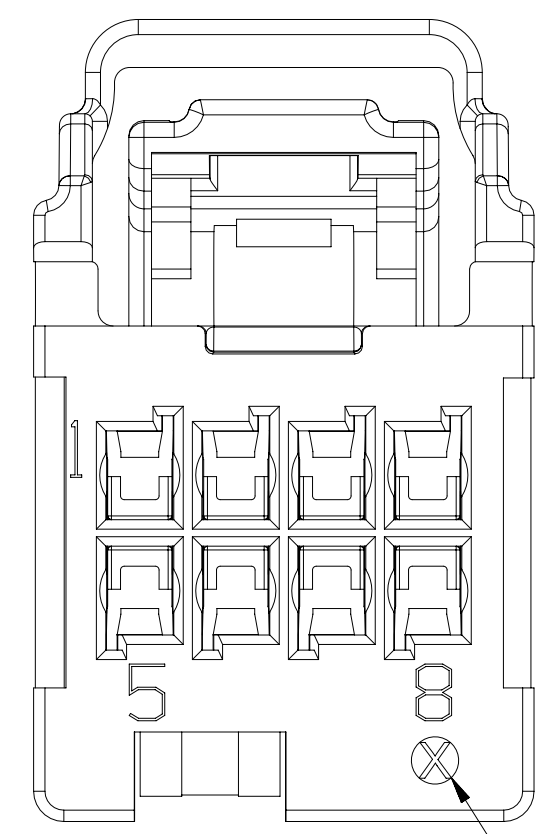
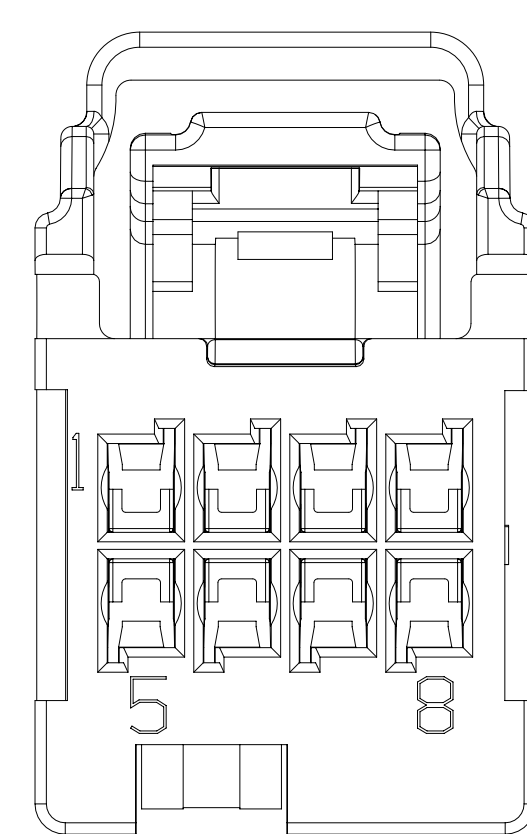
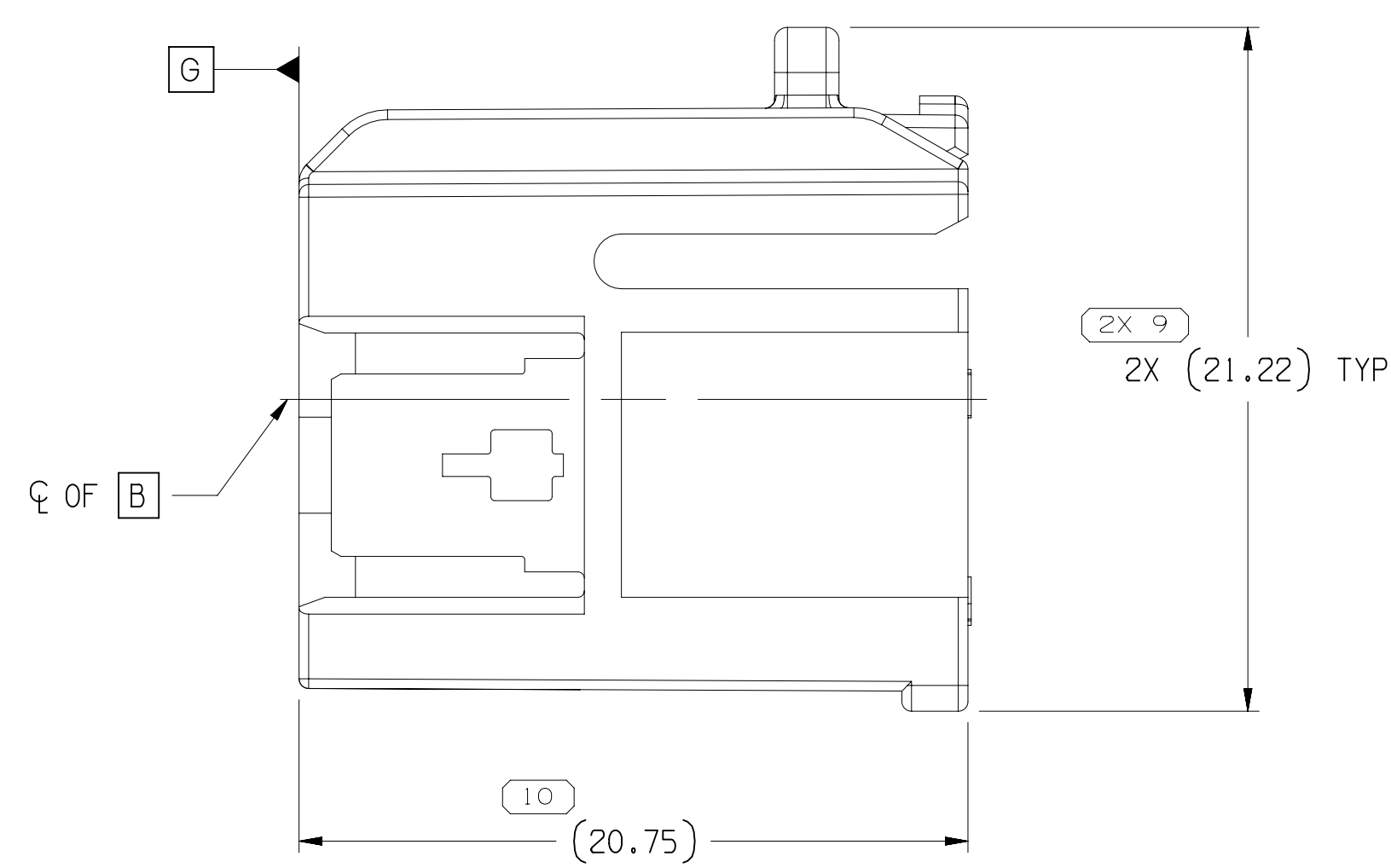
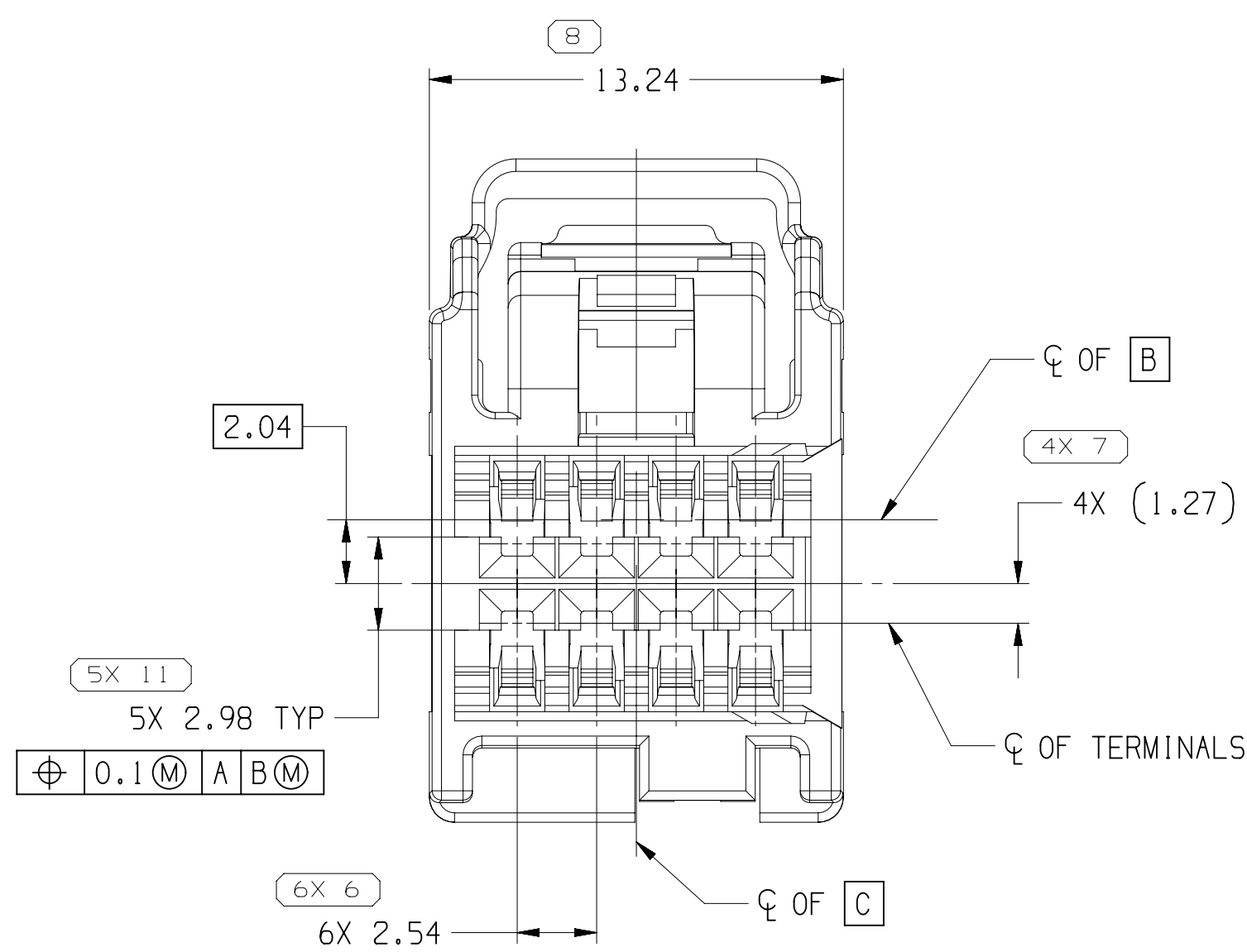
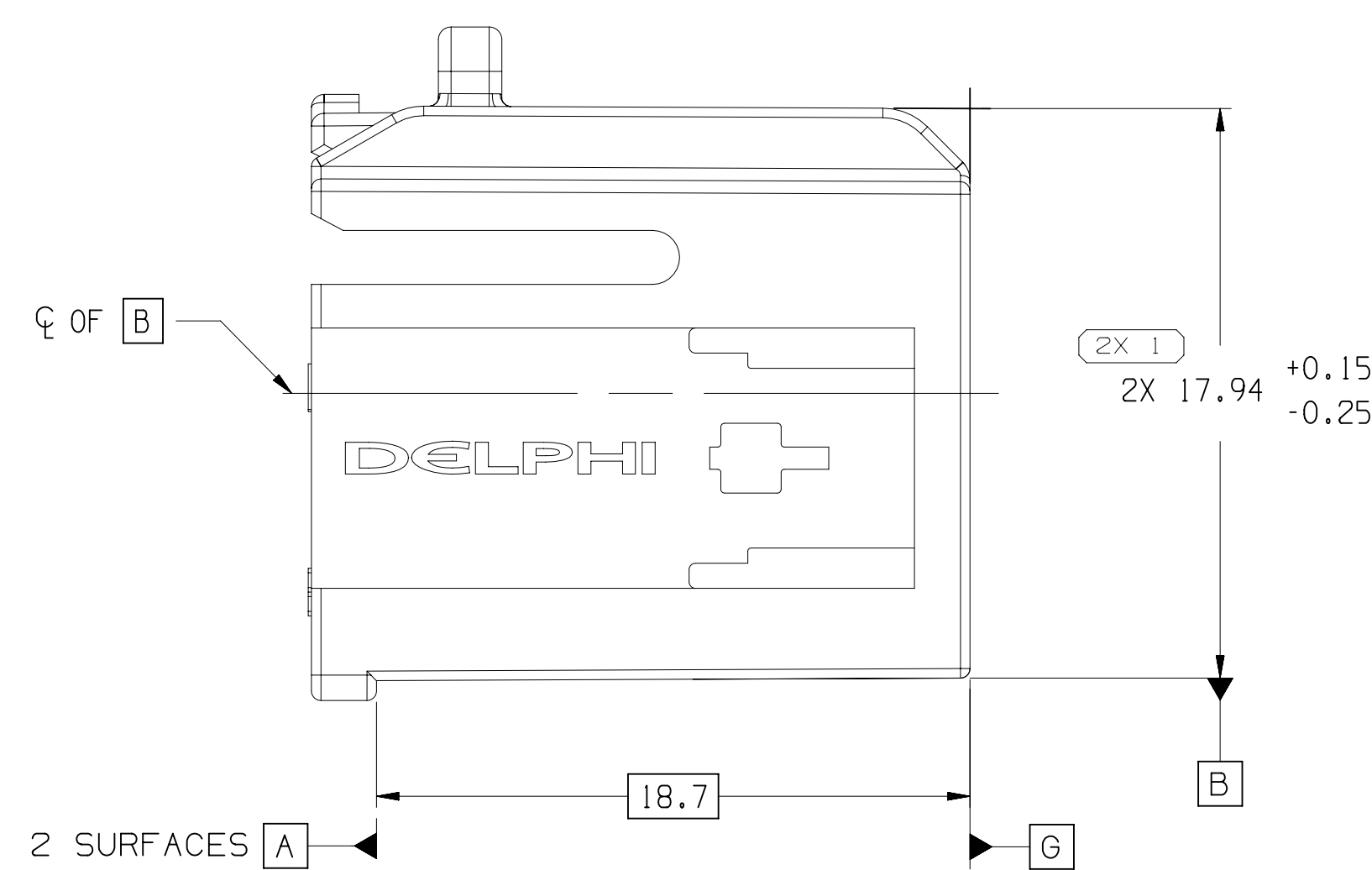
MISSING SYMBOLS		DWG STATUS					ZONE	REVISION HISTORY					AUTH	DR	APV	APV2
NO MISSING SYMBOL NUMBER		DATE	STG	REV	N/P	CHG										
		23MY12	R	01	-	-		CREATED PD, TOD & MATH MODEL		416878	AGG	AGG	DAT			
		04JUL12	R	02	-	-		ALL PARTS - REVISED GRAPHICS		418745	AGG	AGG	AGG	W		
		19JUL12	R	03	-	-		ALL PARTS - REVISED MOLDABILITY FEATURES		418909	AGG	AGG	AGG			
		06NOV12	R	04	-	-		ALL PARTS - 17.94 +0.15/-0.25 WAS 17.94 +0.15 AND UPDATED PART AVAILABILITY		420334	AAM	AGG	AGG			
		28MY19	R	05	-	-		35151774-75 - RELEASED		443432	COD	COD	DS			



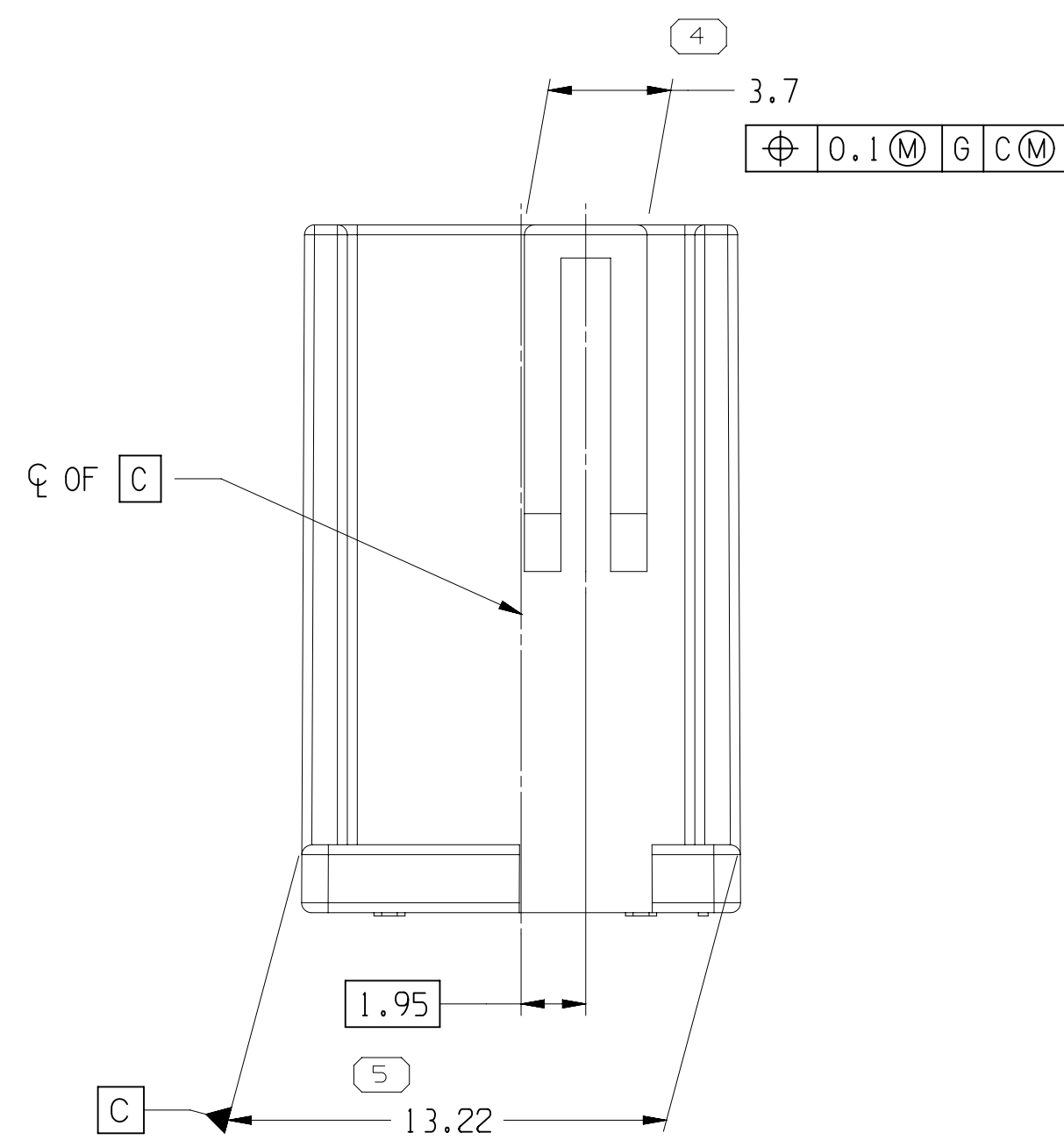
TYPE 102
SAME AS TYPE 101
EXCEPT AS SHOWN



TYPE 103
SAME AS TYPE 101
EXCEPT AS SHOWN
BACK VIEW



TYPE 104
SAME AS TYPE 102
EXCEPT AS SHOWN
BACK VIEW



TYPE 101

35151774	01	-	POLYESTER COMPOUND GRAY	104	2.085
35151775	01	-	POLYESTER COMPOUND BLACK	103	2.081
13942895	03	AA	POLYESTER COMPOUND GRAY	102	2.085
13942894	03	AA	POLYESTER COMPOUND BLACK	101	2.081
PART NO	REV	N/P	MATERIAL SPECIFICATION AND COLOR	TYPE	VOL (CM ³)
9			8	7	

NOTES

1. UNLESS OTHERWISE SPECIFIED AND/OR INDICATED:

DIMENSIONS ARE TO FACE OF VIEW SHOWN AND
AUTOMATICALLY ROUNDED BY COMPUTER FOR INSPECTION
(SEE MATH MODEL FOR PRECISE DIMENSIONS). FOR ALL
OTHER DIMENSIONS NOT SHOWN BUT REQUIRED FOR TOOL
BUILD, SEE MATH MODEL FOR PRECISE TOOL PATH DATA.

2. THIS PRODUCT IS NOT CATEGORIZED AS AN APPEARANCE ITEM, MINOR IMPERFECTIONS INCLUDING, BUT NOT LIMITED TO, FLOW MARKS, COLOR BLEMISHES, GATE VESTIGE, AND SOFT FLASH THAT DO NOT AFFECT THE FIT, FORM, OR FUNCTION OF THE PART ARE PERMISSIBLE PER EANP-4-3-CS-01-EN.
3. CORPORATE BRAND TO BE APPLIED TO PRODUCT DESIGN PER THE LATEST REVISION OF ESD S1085201.
4. FOR APPLICATION DATA SEE THE INDIVIDUAL APPLICATION DRAWINGS.
5. TO ASSURE CORRECT TERMINAL POSITION, AN ELECTRICAL TEST HOLDER APPROVED BY BOTH THE DELPHI PACKARD NORTH AMERICA PRODUCT LINE ENGINEER AND ASSEMBLY TOOLING DESIGN UNIT MUST BE USED. FAILURE TO USE AN APPROVED TEST HOLDER MAY RESULT IN UNSEALED TERMINALS.

LIMITS ARE ESTABLISHED									
DIMENSIONAL RANGE (MM)									
FROM	> 0	> 20	> 30	> 70	> 100	> 150	> 200	> 250	> 300
TO	20	30	100	150	200	250	300	400	
TOLERANCE UNLESS OTHERWISE SPECIFIED									
	±0.15	±0.2	±0.3	±0.4	±0.5	±0.6	±0.8	±1	±1.1
ANGULAR TOLERANCE 12°									

LINE DRAWN THROUGH A PART NUMBER INDICATES THAT PHYSICAL PARTS ARE NOT AVAILABLE FOR ORDERING.	
PART NUMBERS THAT DO NOT HAVE A LINE PRESENT INDICATE THAT PHYSICAL PARTS ARE AVAILABLE FOR ORDERING.	
CONTACT APTIV SALES TO ASSURE AVAILABILITY OF PARTS.	
CWG TYPE	PART DRAWING
STYLE	
VOLUME (CM) SEE CHART	DISTR CODE D
UNLESS OTHERWISE SPECIFIED	
THIS DOCUMENT IS IN ACCORDANCE WITH ASME Y14.5M-1994 AS INDICATED BY THE GW GLOBAL DIMENSIONING AND DIMENSIONING EXTENSION (DSE) SEPARATE PATTERNS OF FEATURES MAY BE GIVEN SEPARATELY REGARDLESS OF DATUM REFERENCES.	
ALL DIMENSIONS ARE IN MILLIMETERS	
REFERENCE	

● ACTIV ●

CONNECTION SYSTEMS

WARREN, OH

COPYRIGHT 2012 ACTIV. ALL RIGHTS RESERVED.

THIS DRAWING IS THE PROPERTY OF ACTIV AND CONTAINS ACTIV
 INFORMATION. NO REPRODUCTION, DISTRIBUTION AND
 UTILIZATION OF THIS DOCUMENT OR ITS RELATED CAD DATA DATA,
 AS COMMUNICATION OF ANYTHING TO OTHERS WITHOUT EXPRESS
 AUTHORIZATION, IS PROHIBITED.

	DATE
DR	
APV01 A. GONZALEZ	23MY12
APV02 M. HERNANDEZ	23MY12
APV03 D. TORRES	23MY12
APV04	
SUBSTANCES OF ORIGIN AND RECYCLED CONTENT PER APV1 (0346000)	
MATERIAL SEE CHART	
DRAWING NAME	
TAXI CONN 8 F OCS 0.64	

DRAWING NUMBER							
1 3942896							
SIZE	SCALE	FRAME NO	SHEET NO	STG	REV	N	
A0	5:1	1 OF 1	1 OF 1	R	05		
2				1			