

# SHIELDPACK™

## HV AK CLASS 1 SMU 2 AND 3 WAY AK



### AVAILABLE CONFIGURATIONS

Connector Type	Wire-to-device
Cable Exit Orientation	180°
Cable Range (mm²)	2.5 - 4 (power) 0.5 - 0.75 (HVIL)
Terminal Type (mm)	2.8
# of Power Terminals	2
Shielding	Multicore
HVIL	Shunt on female or inline
Assembly Assurance	CPA/TPA
Number of Indexes	5



### APPLICATIONS

Battery pack	PTC heater
DC / DC converter	HV PDU
Electric AC	On-board charger (OBC)

See back page for representative part numbers and packaging dimensions.

### BENEFITS

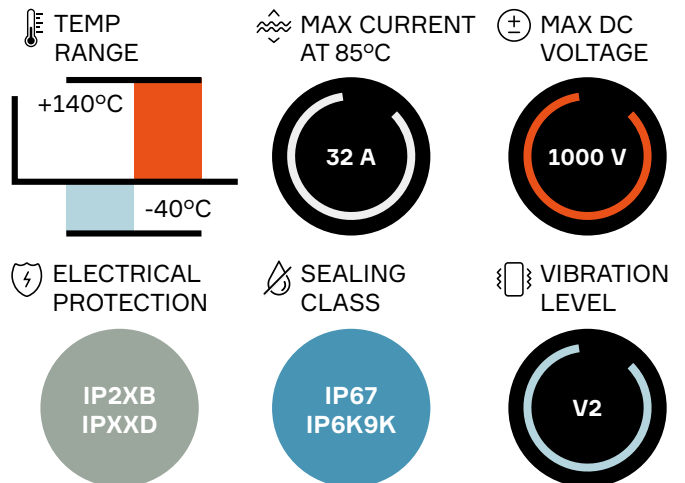
- Standard AK interface
- High vibrations and operating temperatures
- Multiple layouts & HVIL options in the same interface

### FEATURES

- Designed according to AK interface specification and LV215 latest revision
- Finger proof/touch safe
- Multicore shielded cable for wiring simplification
- Fully interchangeable with other AK supplier sources



### PERFORMANCE



### About Aptiv

Aptiv is a global technology company that develops safer, greener and more connected solutions enabling the future of mobility.

Visit [aptiv.com](https://www.aptiv.com) →



Code	Header 2 way	Header 3 way	Mating outer housing	BOM
A	35149836	35149842	33372017	1
B	35149837	35149843	33372014	
C	35149838	35149844	33372016	
D	35149839	35149845	33372015	
E	35149840	35149846	35061103	

## ASSOCIATED PARTS

Part number	Description	BOM		
		2 way, HVIL pass-through	2 way, HVIL shunt	3 way
<b>Header</b>				
35194900	DCS-2 2.8 male unsealed terminal 2.5-4 mm <sup>2</sup> Ag	2	2	3
35149868	TPA (Terminal Position Assurance) 2 way	1	1	-
35149869	TPA (Terminal Position Assurance) 3 way	-	-	1
15540356	MTS 0.64 female terminal 0.5-0.75 mm <sup>2</sup> Ag	2	2	-
<b>Mating Connector</b>				
13799603	CTS 2.8 female terminal 2.5 mm <sup>2</sup> Ag	2	2	3
13882331	CTS 2.8 female terminal 4 mm <sup>2</sup> Ag			
33504709	HVIL male DuoTwin 0.64 0.5 mm <sup>2</sup> Ag	2	-	-
35174268	Spacer	1	1	1
35174446	Shielding	2	2	2
35174249	Cable strain relief 3 x 2.5 mm <sup>2</sup>	-	-	1
35174250	Cable seal 3 x 2.5 mm <sup>2</sup>	-	-	1
35174511	Inner housing 2 way	1	-	-
35174507	Cable strain relief 2 x 4.0 mm <sup>2</sup>	-	1	-
35174508	Cable seal 2 x 4.0 mm <sup>2</sup>	1	1	-
35174280	Inner ferrule	1	1	1
35174278	Outer ferrule	1	1	1
35174509	Inner housing sub-assembly	-	1	-
35174448	Inner housing 3 way	-	-	1
35174513	TPA (Terminal Position Assurance)	1	-	-
35174510	Cable strain relief 2 x 4.0 + 2 x 0.5 mm <sup>2</sup>	1	-	-

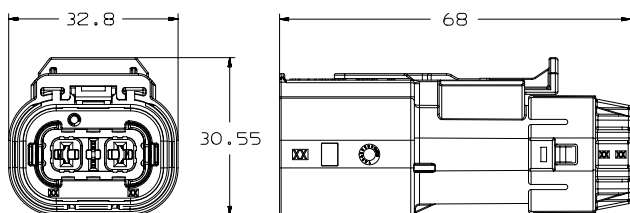
\* Both DCK terminals and CTS terminals are compatible.

### Component Kits\*\*

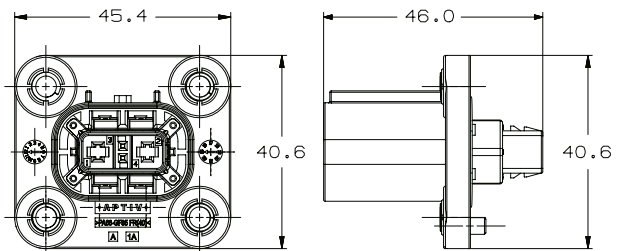
Part number	Description (pass-through version)	Part number	Description (shunted version)
35122237	2 x 4 mm <sup>2</sup> + 2 x 0.5 mm <sup>2</sup> cable code A	33367712	2 x 4 mm <sup>2</sup> cable code A
35122238	2 x 4 mm <sup>2</sup> + 2 x 0.5 mm <sup>2</sup> cable code B	35122240	2 x 4 mm <sup>2</sup> cable code B
33367711	2 x 4 mm <sup>2</sup> + 2 x 0.5 mm <sup>2</sup> cable code C	35122241	2 x 4 mm <sup>2</sup> cable code C
35122239	2 x 4 mm <sup>2</sup> + 2 x 0.5 mm <sup>2</sup> cable code D	33367710	2 x 4 mm <sup>2</sup> cable code D
35086591	2 x 4 mm <sup>2</sup> + 2 x 0.5 mm <sup>2</sup> cable code E	35086590	2 x 4 mm <sup>2</sup> cable code E

\*\* Available configurations with associated BOM (Bill Of Materials).

### DIMENSION MEASUREMENT SAMPLE



33367712



35149836

Part numbers, specifications, dimensions and performance data in this document are for general references only and are subject to change without notice. To verify product information, please contact an Aptiv representative.

CS-SP69-HV-En0323