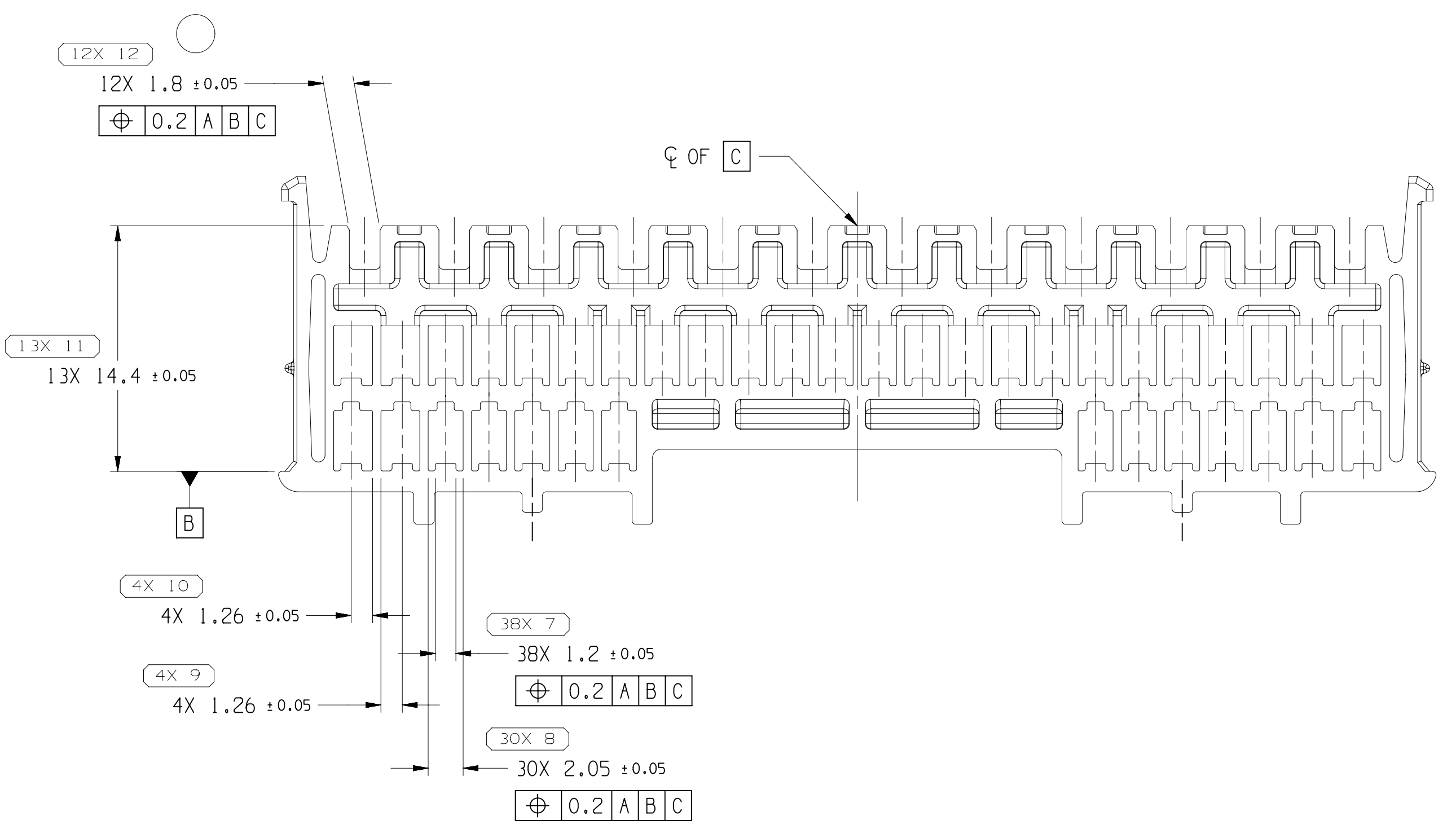
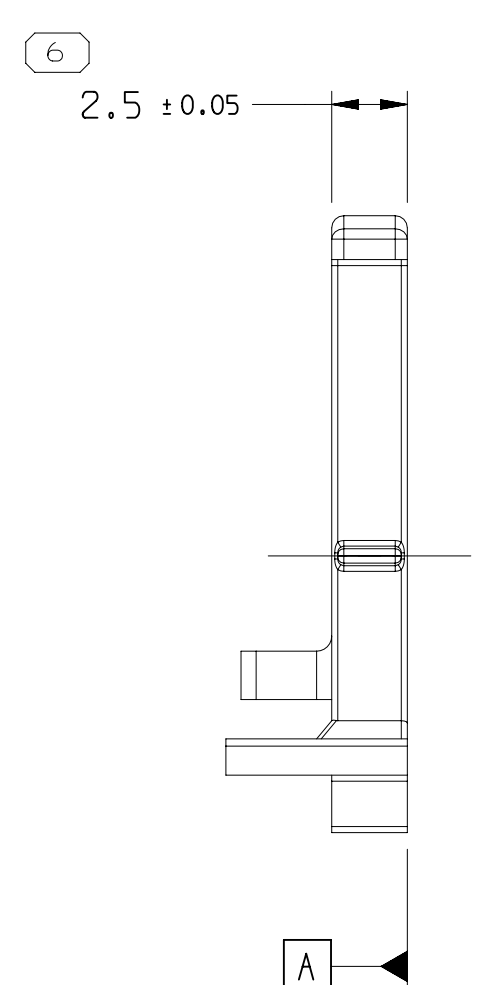
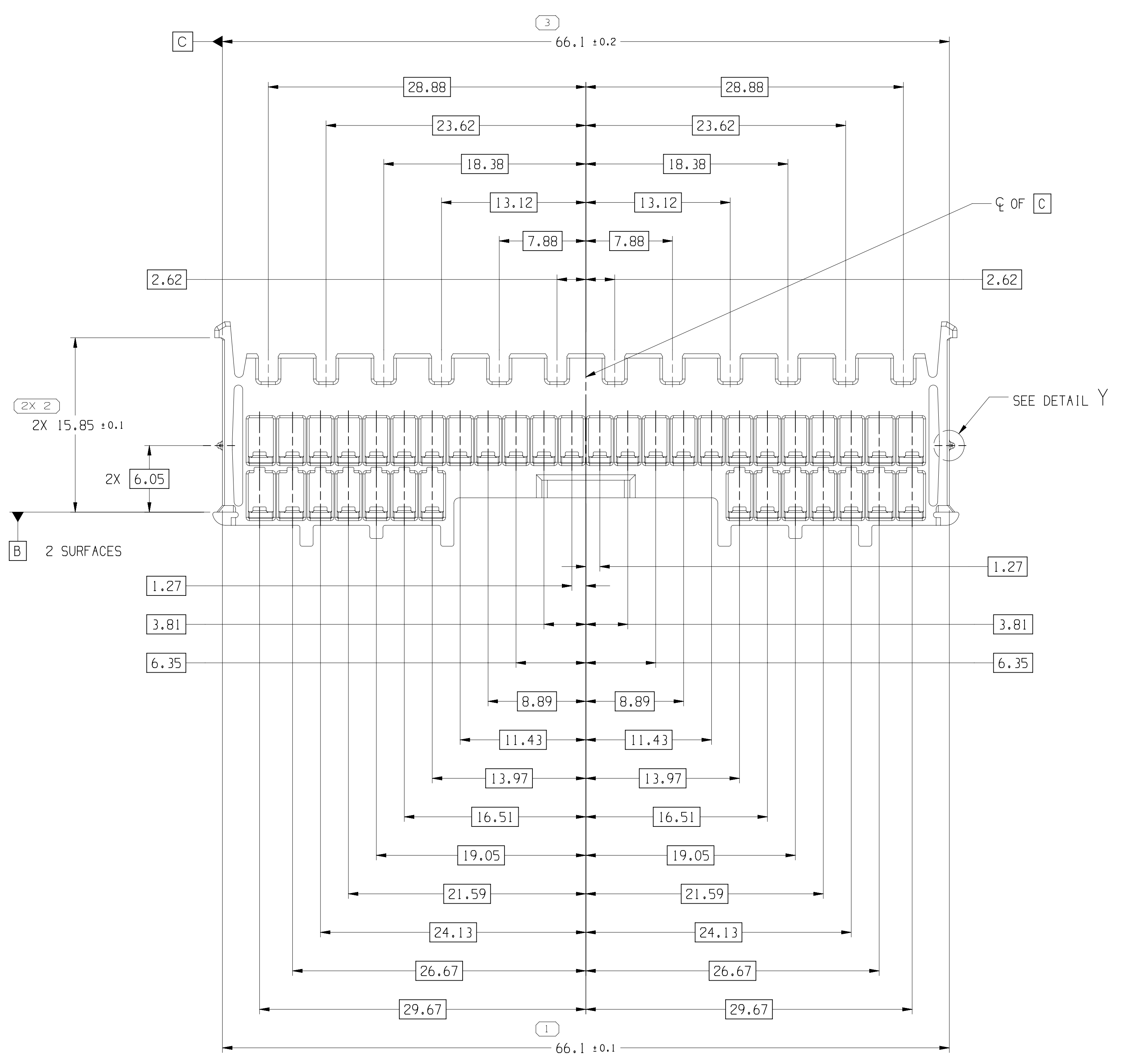
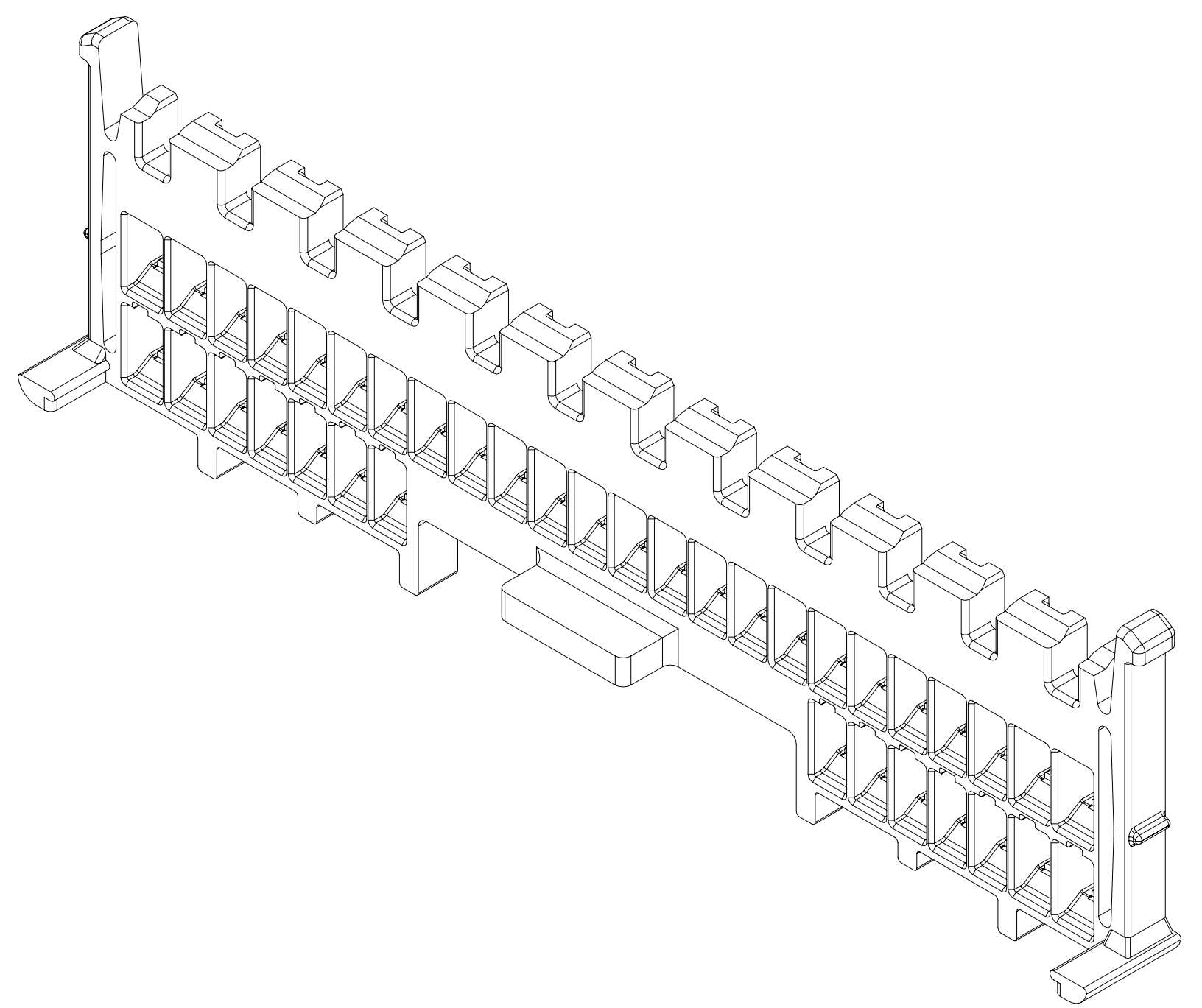
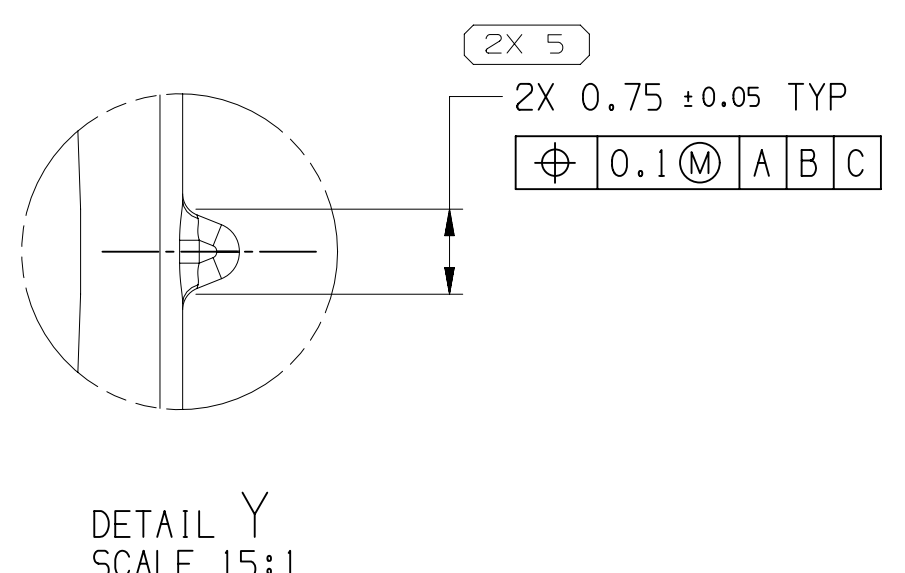
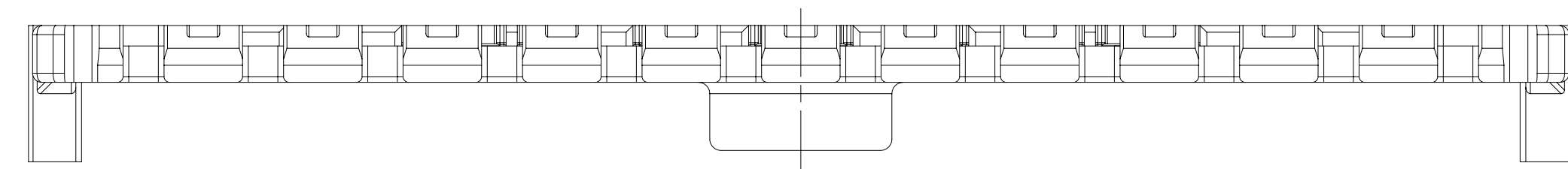
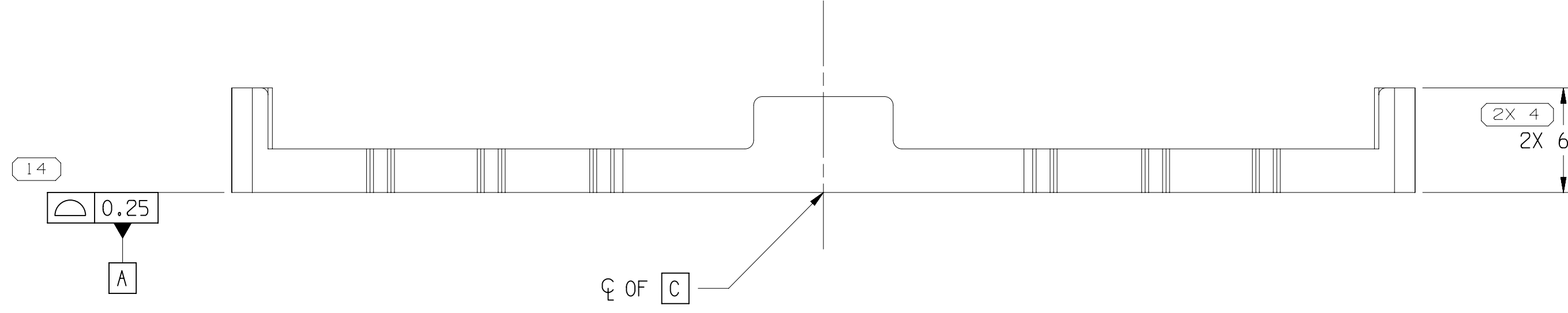


SYMBOL DEFINITION			TOTAL NO OF INSPECTIONS REQUIRED	
	A DIMENSION WITHOUT AN INSPECTION REPORT SYMBOL DOES NOT REQUIRE INSPECTION. IT MAY BE CONTROLLED ON THE INDIVIDUAL COMPONENT DRAWING.		111	
	INDICATES THE DIMENSION IS SHOWN ON THE PART DRAWING AND THE TOOL MUST BE QUALIFIED AT 80% OF THE TOLERANCE SHOWN UNLESS SUPERSEDED BY A "TBT".	LAST NO. USED	14	

MISSING SYMBOLS		ZONE		REVISION HISTORY		AUTH		DR		APVD	
DATE	STG	REV	N/P	CHG							
110C16	R	01	-	-	RELEASED PART DRAWING	433779	EVV	EVV	JSK		
13FE17	R	02	-	-	REVISED GRAPHICS	435649	EVV	EVV	JSK		
19SE17	R	02	AA	-	GD&T TOL WAS 0.1 AND REMOVED FEATURE CONTROL FRAME #13	437741	EVV	EVV	JSK		
10N017	R	02	AB	-	UPDATED PART AVAILABILITY	438353	JGM	JGM	JSK		
28N019	R	03	-	-	REVISED GRAPHICS, RELOCATED DIM #12 AND UPDATED "PART USED IN ASSEMBLIES" NOTE	550526	JGM	JGM	HH		



- NOTES
- UNLESS OTHERWISE SPECIFIED AND/OR INDICATED:
DIMENSIONS ARE TO FACE OF VIEW SHOWN AND AUTOMATICALLY ROUNDED BY COMPUTER FOR INSPECTION (SEE MATH MODEL FOR PRECISE DIMENSIONS). FOR ALL OTHER DIMENSIONS NOT SHOWN BUT REQUIRED FOR TOOL BUILD, SEE MATH MODEL FOR PRECISE TOOL PATH DATA.
 - THIS PART USED IN ASSEMBLIES SHOWN ON TAXI 33390102.
 - THIS PRODUCT IS NOT CATEGORIZED AS AN APPEARANCE ITEM, MINOR IMPERFECTIONS INCLUDING, BUT NOT LIMITED TO, FLOW MARKS, COLOR BLEMISHES, GATE VESTIGE, AND SOFT FLASH THAT DO NOT AFFECT THE FIT, FORM, OR FUNCTION OF THE PART ARE PERMISSIBLE PER EANP-4-3-CS-01-EN.
 - REFERENCE MATING COMPONENTS OR EQUIVALENT:
TAXI CONNECTOR 33390106



DIMENSIONAL RANGE (MM)	TOLERANCE (UNLESS OTHERWISE SPECIFIED)	CHART	ET
FROM 0 TO >20	±0.15	1	
>20 TO >30	±0.2	2	
>30 TO >70	±0.3	3	
>70 TO >100	±0.4	4	
>100 TO >150	±0.5	5	
>150 TO >200	±0.6	6	
>200 TO >250	±0.7	7	
>250 TO >300	±0.8	8	
>300 TO >400	±1.0	9	

APTIV
CONNECTION SYSTEMS
WARREN, OH
COPYRIGHT 2016 APTIV. ALL RIGHTS RESERVED.

THIS DRAWING IS THE PROPERTY OF APTIV AND CONTAINS APTIV CONFIDENTIAL INFORMATION. THE REPRODUCTION, DISTRIBUTION AND UTILIZATION OF THIS DOCUMENT OR ITS RELATED CAD DATA, AS WELL AS COMMUNICATION OF ANY CONTENT TO OTHERS, WITHOUT EXPRESS AUTHORIZATION, IS PROHIBITED.

DATE: 11/03/16
DR: ELIAS VAZQUEZ V.
APVD: ELIAS VAZQUEZ V.
APVD3: JUSTIN S. KOPELOS
APVD4:
APVD5:

SUBSTANCES OF CONCERN AND RECYCLED CONTENT PER APTIV 10949001

MATERIAL: POLYAMIDE COMPOUND BLUE

DRAWING NAME: LOCK SECONDARY COMB
DRAWING NUMBER: 33390125

SIZE: A0
SCALE: 4:1
FRAME NO: 1 OF 1
SHEET NO: 1 OF 1
STG REV N/P: R 03