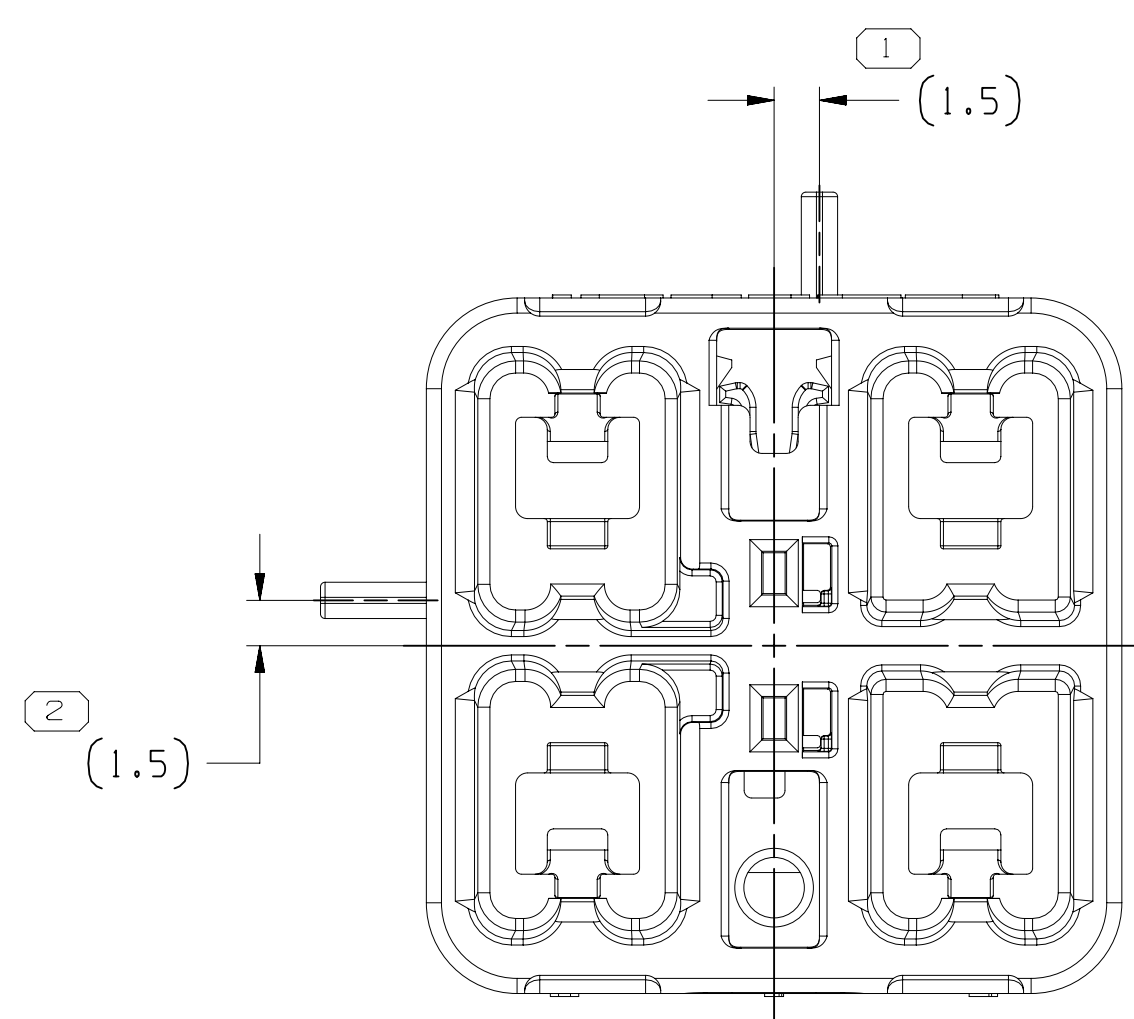
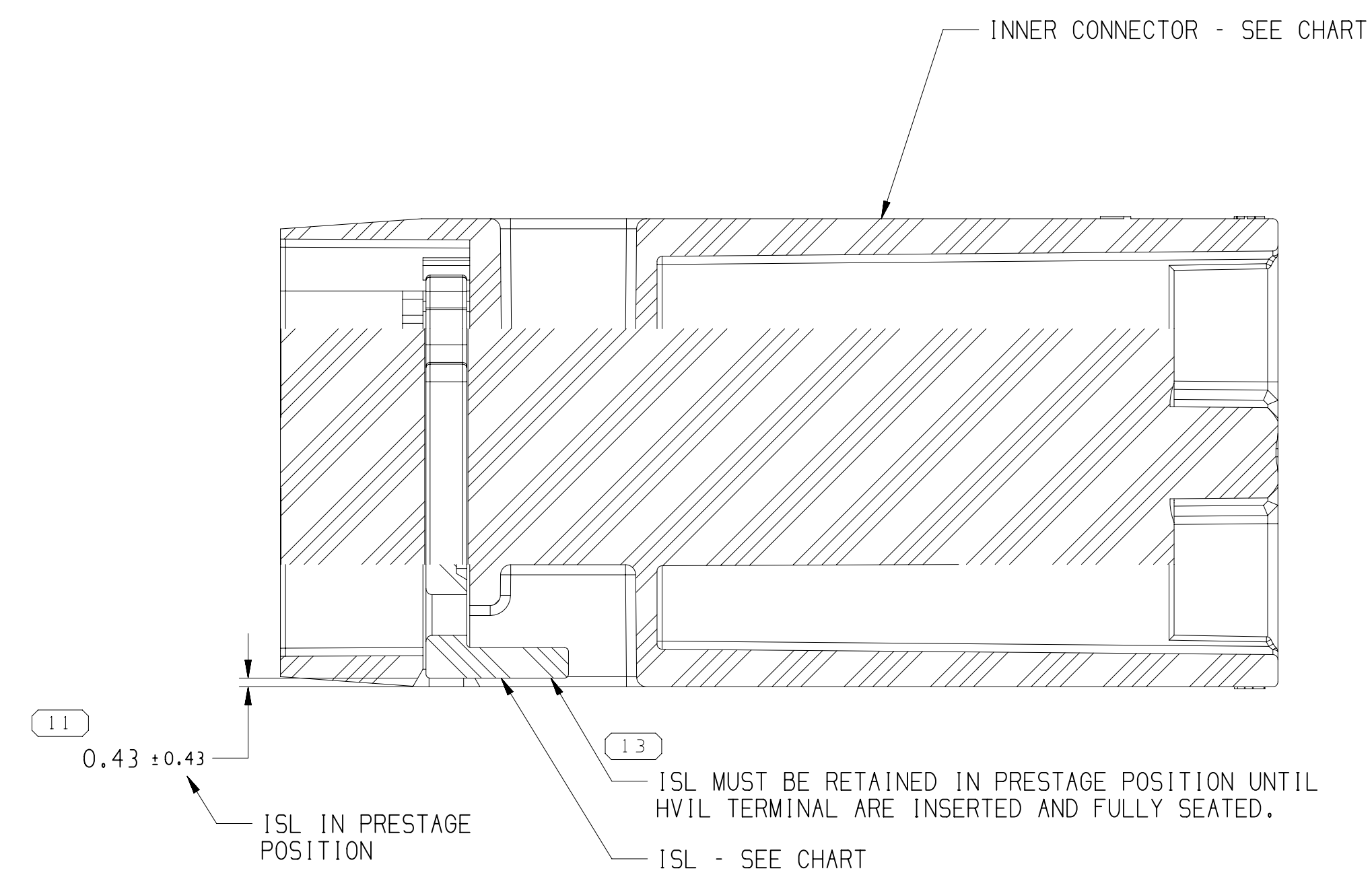


SYMBOL DEFINITION		TOTAL NO OF INSPECTIONS REQUIRED	MISSING SYMBOLS
A DIMENSION WITHOUT AN INSPECTION REPORT SYMBOL DOES NOT REQUIRE INSPECTION. IT MAY BE CONTROLLED ON THE INDIVIDUAL COMPONENT DRAWING.		13	NO MISSING SYMBOL NUMBER
	LAST NO. USED	13	

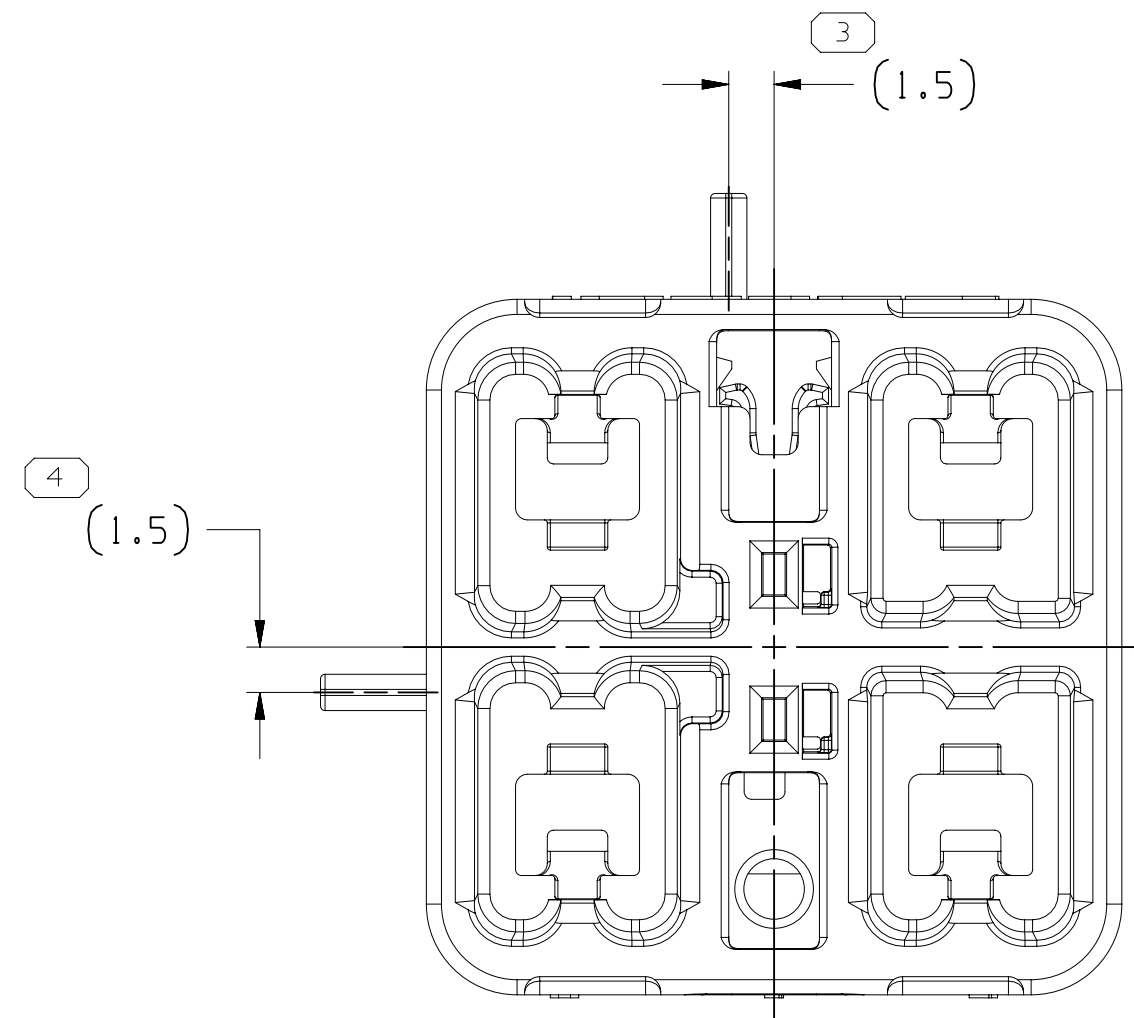
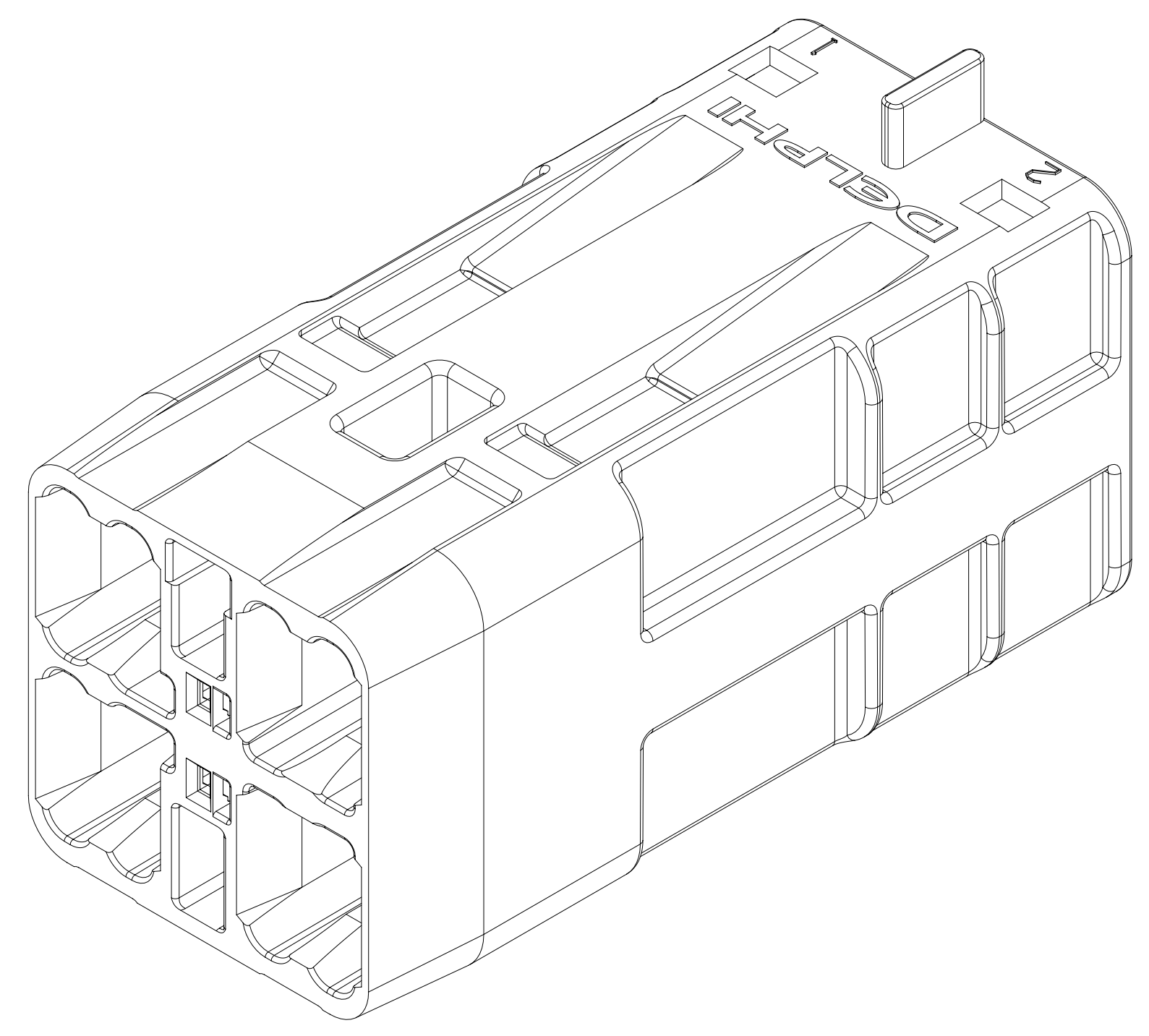
DWG STATUS		ZONE		REVISION HISTORY		AUTH	DR	APVD	APVD
DATE	STG	REV	N/P	CHG					
27FE18	R	01	-	-	ALL PARTS - REVISED GRAPHICS, ADDED "PART PERFORMANCE REQUIREMENTS", "CONNECTOR EXTRACTION FORCE" & "ASSEMBLY ARE MODULAR" NOTES AND REVISED "CHARGED", "MIN CREEPAGE DISTANCE", "ELECTRIC HI-POT TEST" & "PACKAGED" NOTES; 35149737 - UPDATED PART AVAILABILITY	436185	AGC	AGC	TM
26SE18	R	02	-	-		440875	GDH	JAA	TM
28N018	R	03	-	-	ALL PARTS - REVISED VALIDATION AND CAUTION NOTE.	441703	AHG	AHG	TM



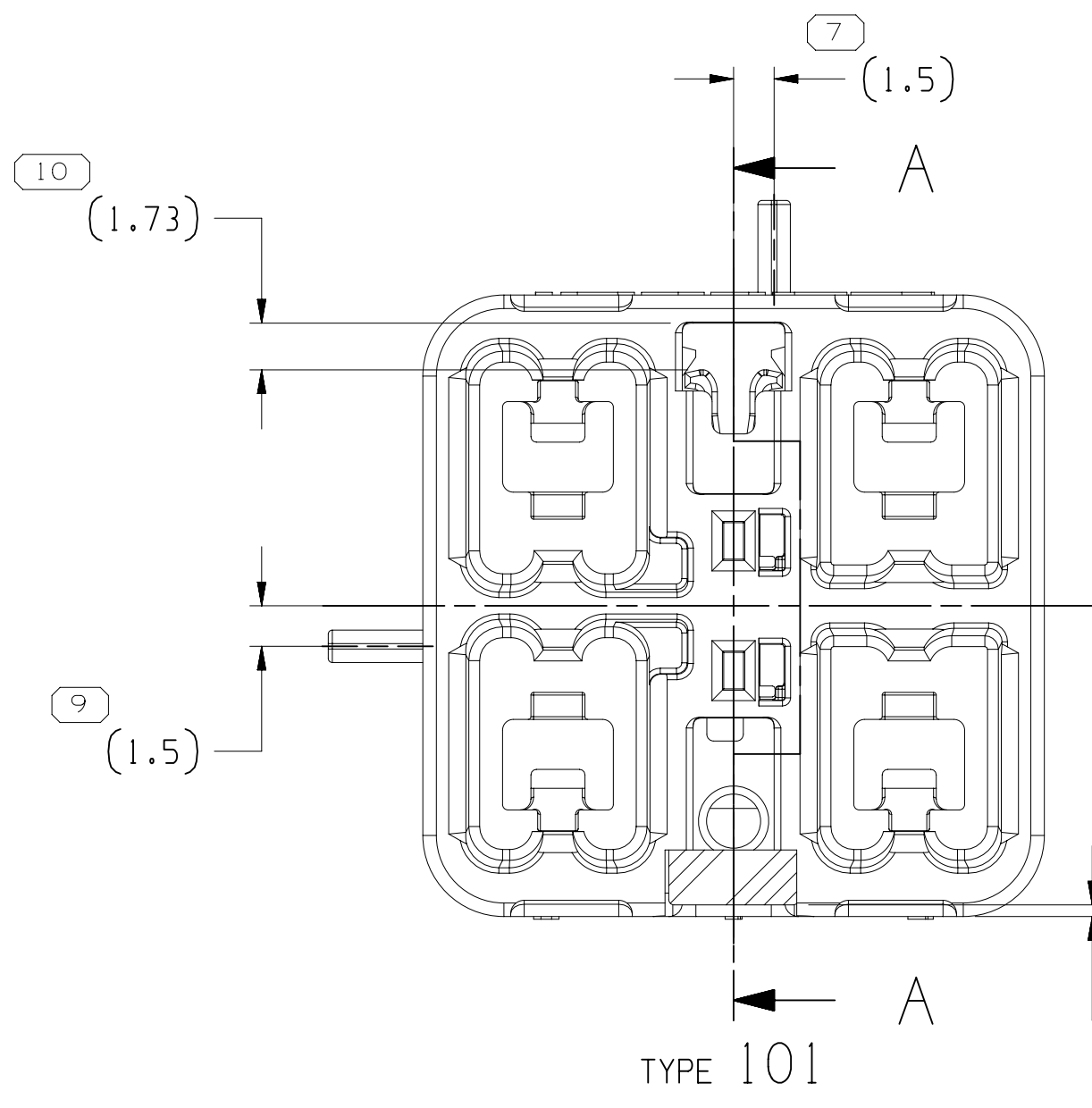
TYPE 102  
SAME AS TYPE 101  
EXCEPT AS SHOWN



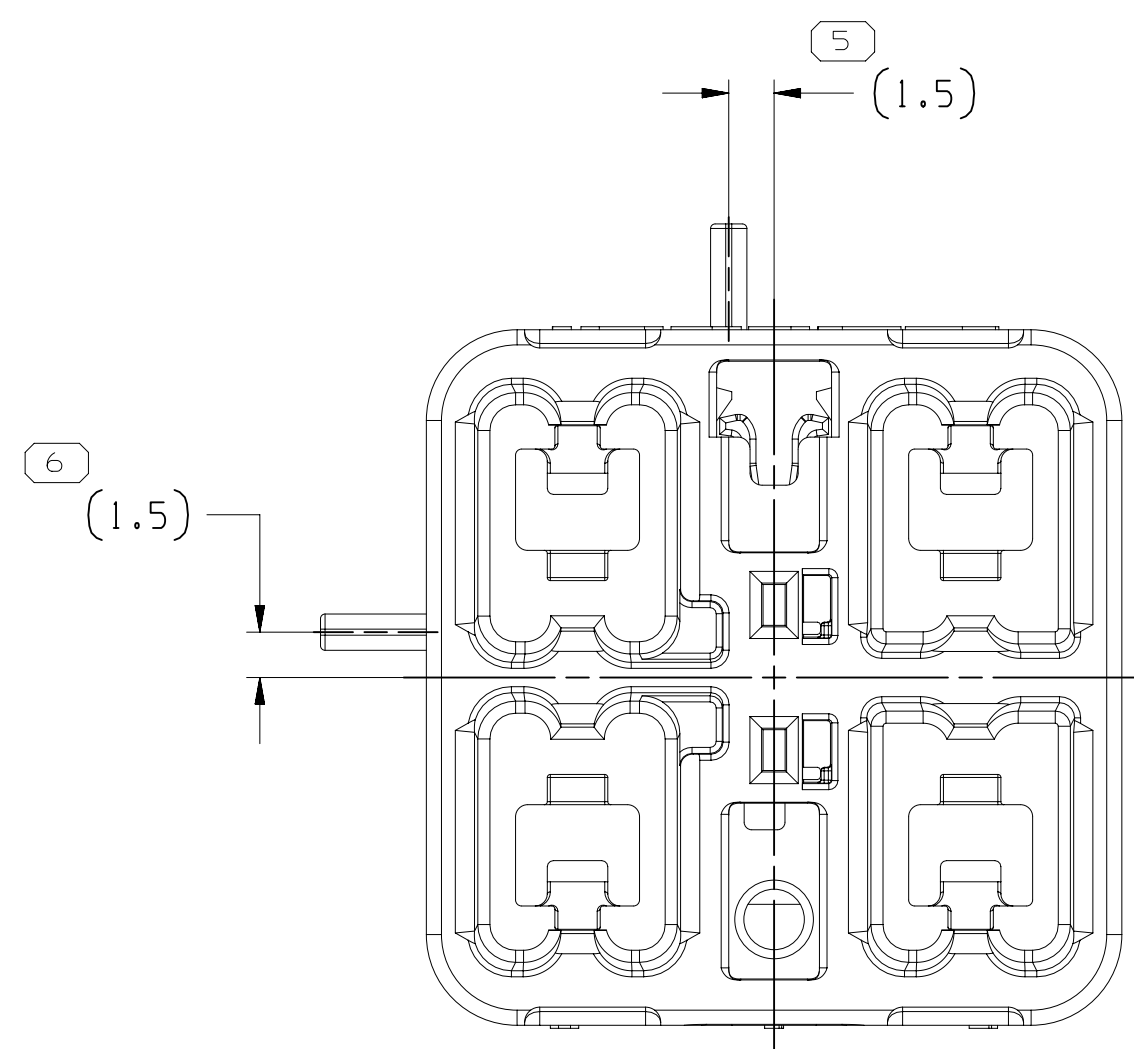
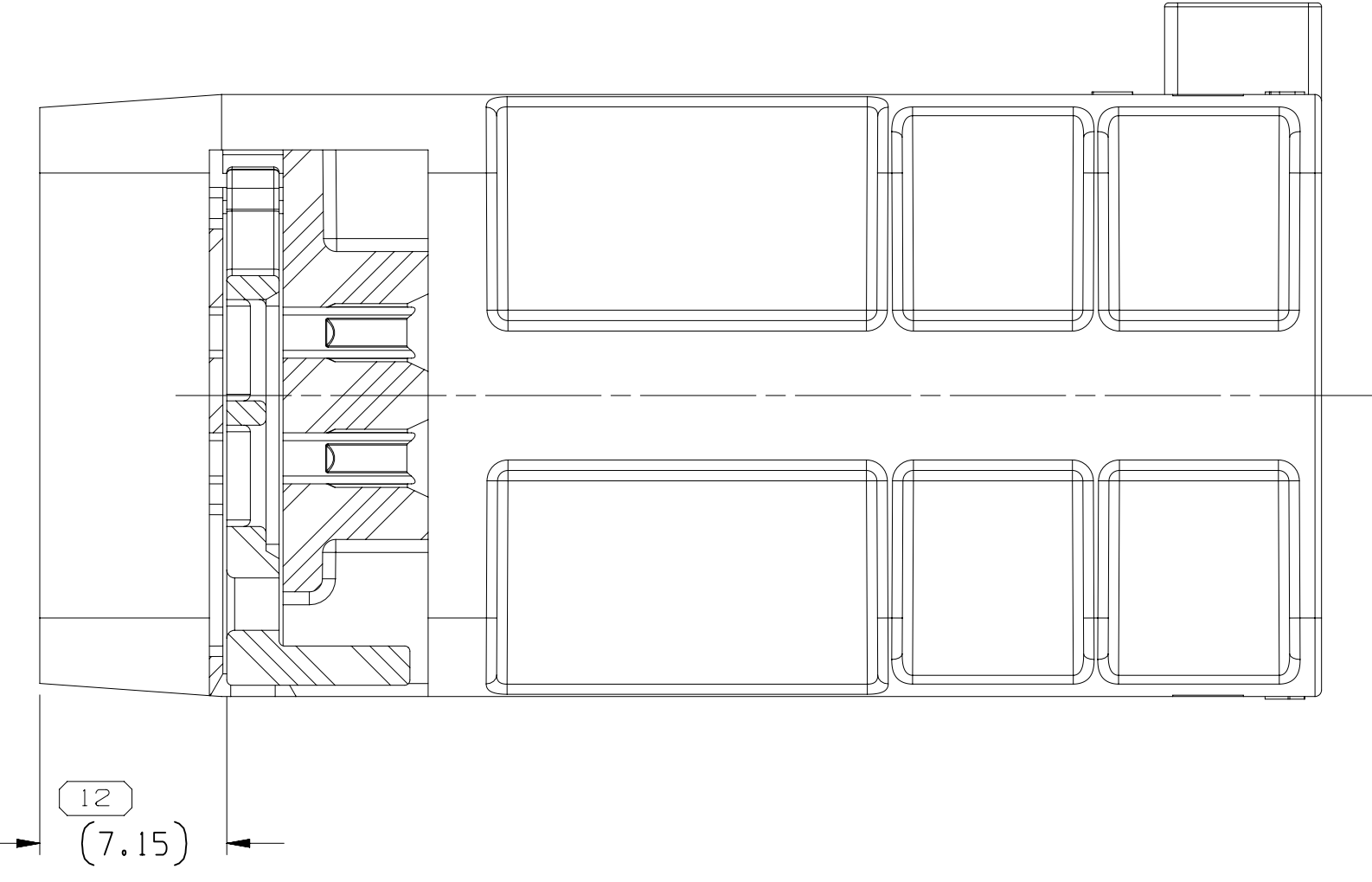
SECTION A - A



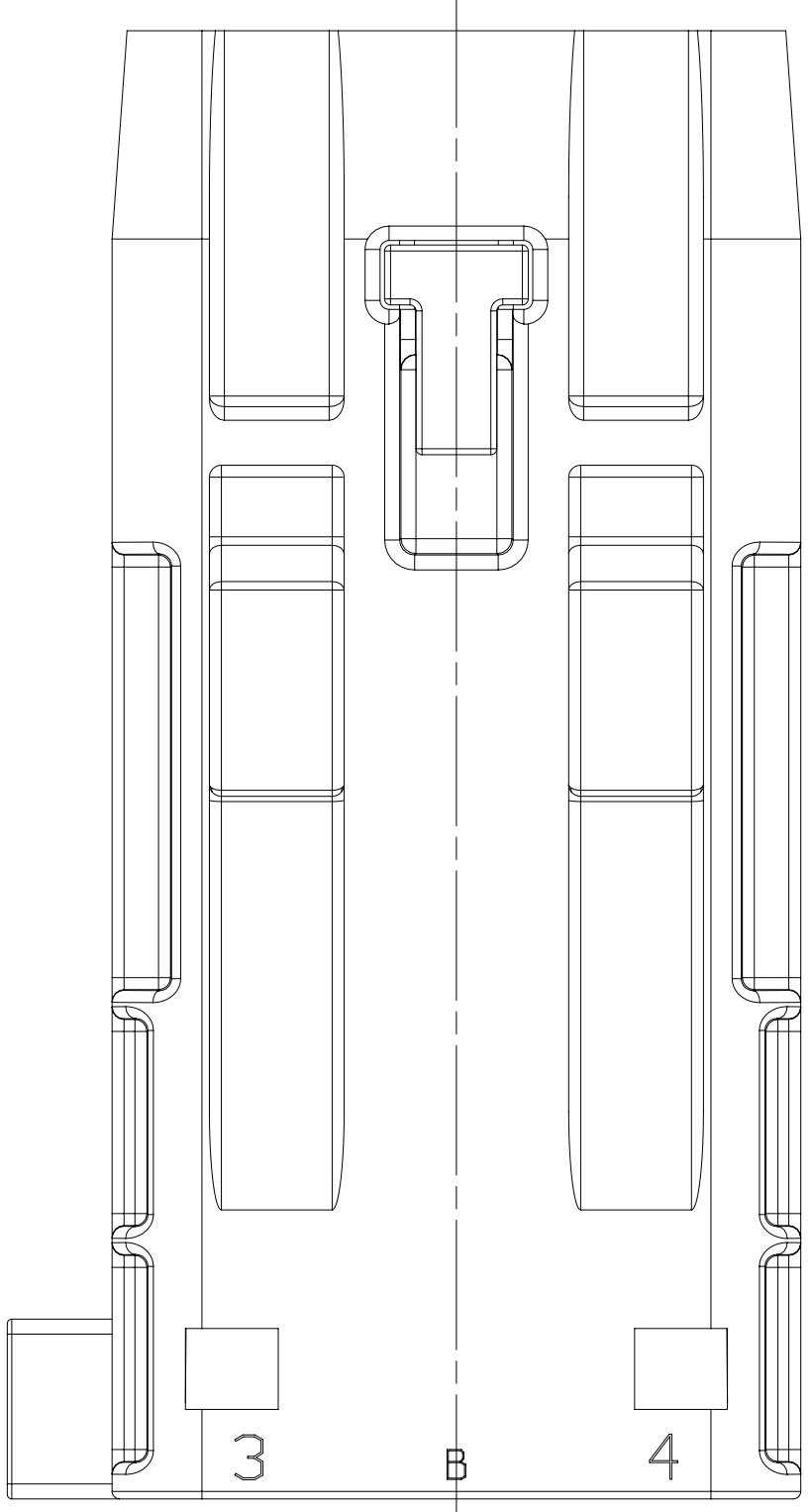
TYPE 103  
SAME AS TYPE 101  
EXCEPT AS SHOWN



TYPE 101



TYPE 104  
SAME AS TYPE 101  
EXCEPT AS SHOWN



NOTES

- UNLESS OTHERWISE SPECIFIED AND/OR INDICATED:  
DIMENSIONS ARE TO FACE OF VIEW SHOWN AND AUTOMATICALLY ROUNDED BY COMPUTER FOR INSPECTION (SEE MATH MODEL FOR PRECISE DIMENSIONS). FOR ALL OTHER DIMENSIONS NOT SHOWN BUT REQUIRED FOR TOOL BUILD, SEE MATH MODEL FOR PRECISE TOOL PATH DATA.
- THIS PRODUCT IS NOT CATEGORIZED AS AN APPEARANCE ITEM, MINOR IMPERFECTIONS INCLUDING, BUT NOT LIMITED TO, FLOW MARKS, COLOR BLEMISHES, GATE VESTIGE, AND SOFT FLASH THAT DO NOT AFFECT THE FIT, FORM, OR FUNCTION OF THE PART ARE PERMISSIBLE PER DPNP-4.7-CS-01.
- WHEN THE MALE INNER CONNECTOR ASSEMBLY IS FULLY POPULATED WITH TERMINALS AND PLUGGED INTO A HEADER OUTER HOUSING ASSEMBLY, THE SYSTEM MUST WITHSTAND AN ELECTRIC HI-POT TEST OF 3000 VOLTS AC FOR 10 SECONDS BETWEEN ADJACENT POWER CIRCUITS AND ALSO BETWEEN THE POWER TERMINALS AND SHIELD.
- ELECTRIC VEHICLE CHARGING AND OTHER HEAVY DUTY CYCLE APPLICATIONS CARRYING >25A REQUIRE THE FOLLOWING:
  - MIN. 5.0 MM<sup>2</sup> COPPER CONDUCTORS.
  - TERMINAL TO CONDUCTOR INTERFACE RESISTANCE <2.0 MILLIOHMS. SOLDERED CRIMPS ARE RECOMMENDED.
  - TERMINAL TEMPERATURES NEED TO BE MEASURED IN THE VEHICLE APPLICATION TO ENSURE T-RISE OVER AMBIENT IS <35°C AT MAX. STEADY STATE CURRENT.
- MINIMUM CREEPAGE DISTANCE= 15.68MM
  - ASSESSED PER IEC60664 WITH POLLUTION DEGREE= 2 OR 3, WHEN CONNECTOR IS FULLY MATED
  - CREEPAGE PATH: BACK OF MALE POWER TERMINAL IN CAVITY 1 OR 2 TO BACK OF MALE POWER TERMINAL IN CAVITY 3 OR 4 (OR VICE VERSA) IN MALE INNER CONNECTOR
- PARTS MUST BE FREE OF DUST, CARDBOARD FIBERS OR ANY PARTICULATE MATTER THAT MAY CAUSE FIT OR FUNCTION CONCERNS.
- PARTS MUST BE APPROPRIATELY PACKAGED TO AVOID ANY DAMAGE DURING SHIPPING OR HANDLING. THE SHIPPING CONTAINER MUST BE LINED WITH PLASTIC LINERS, BUBS OR LINERS MUST BE SEALED TO AVOID FOREIGN MATTER.
- WIRING SUPPLIER MUST VERIFY AND COMPLETE CABLE ASSEMBLY VALIDATION PER CUSTOMER REQUIREMENTS. THIS WOULD INCLUDE CRIMP VALIDATION STUDIES FOR SELECTED CABLE & TERMINAL COMBINATIONS.
- FOR APPLICATION DATA SEE THE INDIVIDUAL APPLICATION DRAWINGS.
- PARTS MEET THE PERFORMANCE REQUIREMENTS OF SAE/USCAR-2 R6, SAE/USCAR-37 AUG 2008, FOR THE FOLLOWING CLASSIFICATIONS:
  - TEMPERATURE CLASS 3 (-40°C TO 125°C)
  - VIBRATION CLASS 1 (ON BODY OR CHASSIS)
  - SEALING CLASS 3 (P/V LEAK/ SUBMERSION/ HIGH PRESSURE SPRAY)
- HIGH VOLTAGE 280 TERMINAL-CONNECTOR EXTRACTION FORCE (PRIMARY LOCK ONLY) IS ≥20N (FOR REFERENCE ONLY)
- SIGNAL 0.64MM TERMINAL-CONNECTOR EXTRACTION FORCE (PRIMARY LOCK ONLY) IS ≥30N (FOR REFERENCE ONLY)
- CAUTION: INNER CONNECTOR ASSEMBLIES ARE MODULAR AND CAN MATE TO MULTIPLE HEADER ASSEMBLIES SHOWN ON TAXI'S 33300637 AND 35161786. INDEXING MUST BE VERIFIED WHEN MULTIPLE PARTS WITHIN THIS CONNECTOR FAMILY ARE USED. PLEASE SEE INDIVIDUAL APPLICATION DRAWING FOR MATING PART DETAILS.
- REFERENCE MANUAL 33357995 FOR ASSEMBLY/DISASSEMBLY INFORMATION.

35149739	01	AB	104	35132017	33299801
35149738	01	AB	103	35132016	33299801
35149737	01	AB	102	35132015	33299801
35099976	01	AB	101	35132013	33299801
PART NO	REV	N/P	TYPE	INNER CONNECTOR	ISL SECONDARY LOCK

A LINE DRAWN THROUGH A PART NUMBER INDICATES THAT PHYSICAL PARTS ARE NOT AVAILABLE FOR ORDERING.																																																	
PART NUMBERS THAT DO NOT HAVE A LINE PRESENT INDICATE THAT PHYSICAL PARTS ARE AVAILABLE FOR ORDERING.																																																	
CONTACT APTIV SALES TO ASSURE AVAILABILITY OF PARTS.																																																	
DWG TYPE	PART DRAWING																																																
STYLE																																																	
VOLUME (OPT)	DISTR CODE																																																
	D																																																
UNLESS OTHERWISE SPECIFIED THIS DOCUMENT IS IN ACCORDANCE WITH ASME Y14.5M-1994 AS MODIFIED BY THE 0M GLOBAL DIMENSIONING AND TOLERANCING ADDENDUM-2002. SEPARATE PATTERNING OF FEATURES MAY BE ORDERED SEPARATELY. REGARDLESS OF DATUM REFERENCES.																																																	
ALL DIMENSIONS ARE IN MILLIMETERS																																																	
REFERENCE																																																	
THIRD ANGLE PROJECTION	DO NOT SCALE USE MATH DATA																																																
<table border="1"> <thead> <tr> <th>DIMENSIONS (MM)</th> <th>RANGE (MM)</th> <th>TOLERANCE</th> </tr> </thead> <tbody> <tr> <td>FROM</td> <td>&gt;0</td> <td>&gt;30</td> </tr> <tr> <td>TO</td> <td>&gt;30</td> <td>&gt;70</td> </tr> <tr> <td></td> <td>&gt;70</td> <td>&gt;100</td> </tr> <tr> <td></td> <td>&gt;100</td> <td>&gt;150</td> </tr> <tr> <td></td> <td>&gt;150</td> <td>&gt;200</td> </tr> <tr> <td></td> <td>&gt;200</td> <td>&gt;250</td> </tr> <tr> <td></td> <td>&gt;250</td> <td>&gt;300</td> </tr> <tr> <td></td> <td>&gt;300</td> <td>&gt;400</td> </tr> <tr> <td colspan="3">TOLERANCE UNLESS OTHERWISE SPECIFIED</td> </tr> <tr> <td></td> <td>+0.15</td> <td>+0.2</td> </tr> <tr> <td></td> <td>+0.3</td> <td>+0.4</td> </tr> <tr> <td></td> <td>+0.5</td> <td>+0.6</td> </tr> <tr> <td></td> <td>+0.8</td> <td>+1</td> </tr> <tr> <td></td> <td>+1</td> <td>+1.2</td> </tr> <tr> <td colspan="3">ANGULAR TOLERANCE 12°</td> </tr> </tbody> </table>		DIMENSIONS (MM)	RANGE (MM)	TOLERANCE	FROM	>0	>30	TO	>30	>70		>70	>100		>100	>150		>150	>200		>200	>250		>250	>300		>300	>400	TOLERANCE UNLESS OTHERWISE SPECIFIED				+0.15	+0.2		+0.3	+0.4		+0.5	+0.6		+0.8	+1		+1	+1.2	ANGULAR TOLERANCE 12°		
DIMENSIONS (MM)	RANGE (MM)	TOLERANCE																																															
FROM	>0	>30																																															
TO	>30	>70																																															
	>70	>100																																															
	>100	>150																																															
	>150	>200																																															
	>200	>250																																															
	>250	>300																																															
	>300	>400																																															
TOLERANCE UNLESS OTHERWISE SPECIFIED																																																	
	+0.15	+0.2																																															
	+0.3	+0.4																																															
	+0.5	+0.6																																															
	+0.8	+1																																															
	+1	+1.2																																															
ANGULAR TOLERANCE 12°																																																	

**• APTIV •**  
CONNECTION SYSTEMS  
WARREN, OH  
COPYRIGHT 2018 APTIV. ALL RIGHTS RESERVED.

THIS DRAWING IS THE PROPERTY OF APTIV AND CONTAINS APTIV CONFIDENTIAL INFORMATION. THE REPRODUCTION, DISTRIBUTION AND UTILIZATION OF THIS DOCUMENT OR ITS RELATED CAD DATA, AS WELL AS COMMUNICATION OF ANY CONTENT TO OTHERS, WITHOUT EXPRESS AUTHORIZATION, IS PROHIBITED.

DR	DATE
APVD1 A. GARCIA CABELLO	27FE18
APVD2 A. GARCIA CABELLO	27FE18
APVD3 THOMAS MATHEWS	28FE18
APVD4	
APVDS	

SUBSTANCES OF CONCERN AND RECYCLED CONTENT PER APTIV 10949001

INTERNAL SEC CHART

DRAWING NAME: TAXI ASM CONN 6 0.64 HVIL M/P 280

DRAWING NUMBER: 33314144

SIZE: A0  
SCALE: 4:1  
FRAME NO: 1 OF 1  
SHEET NO: 1 OF 1  
STG REV: R 03