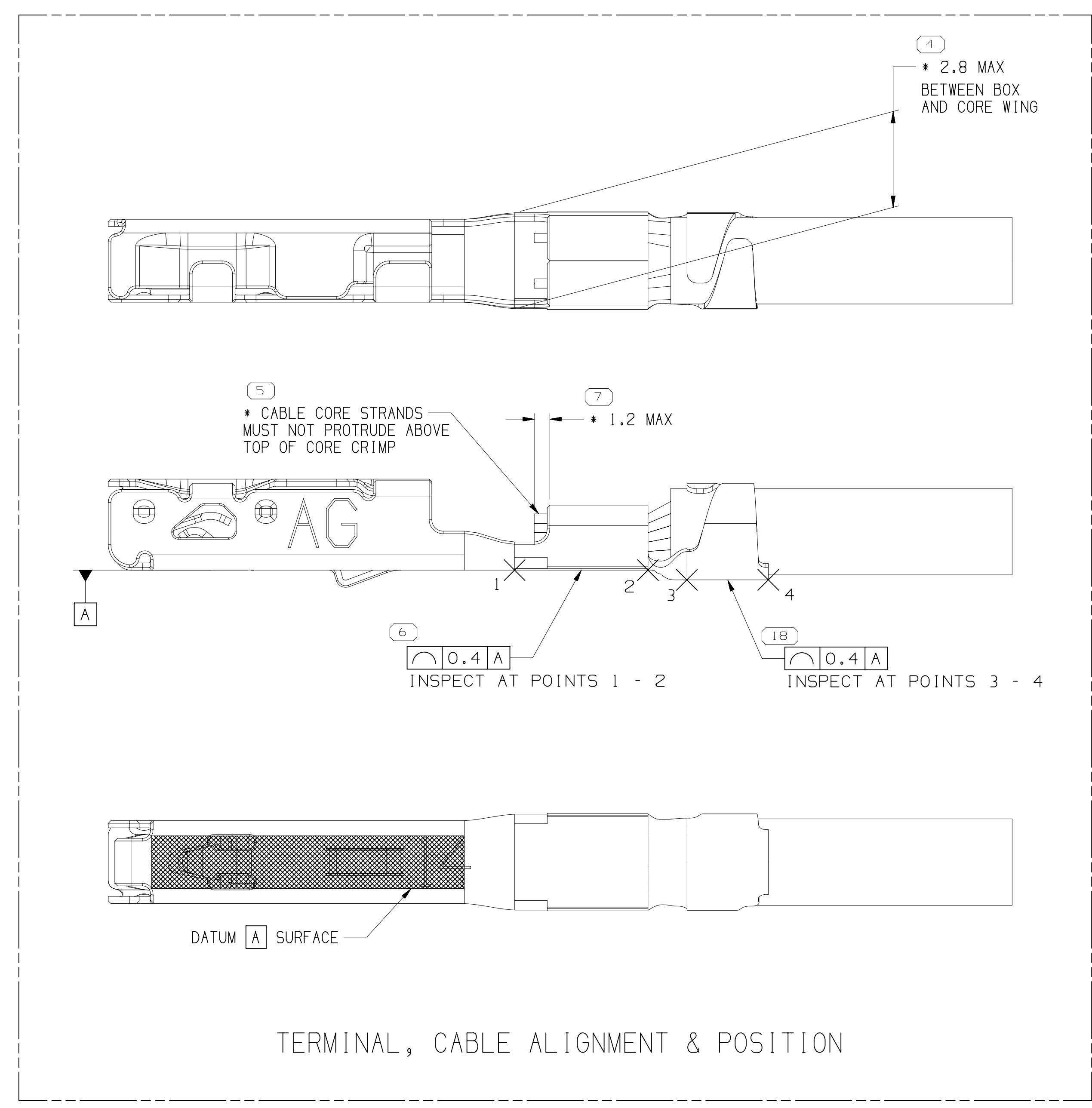
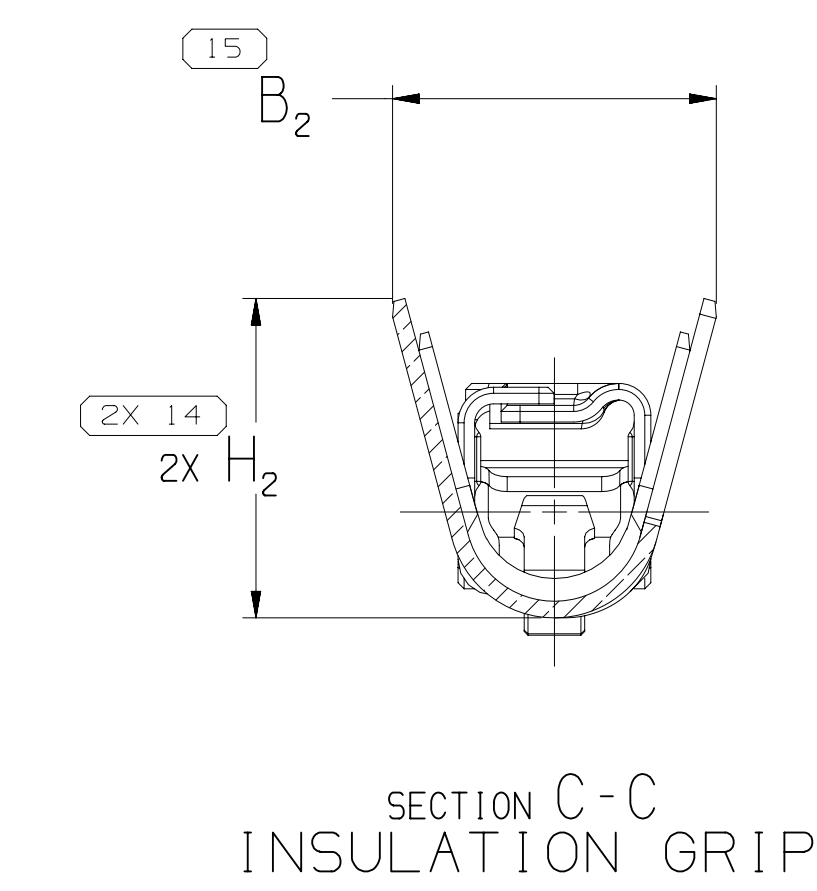
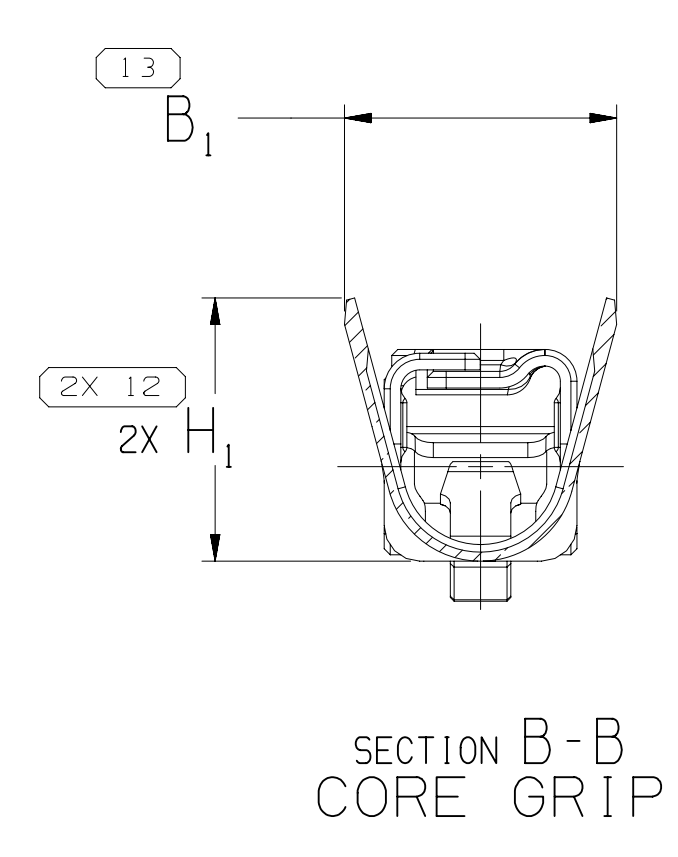
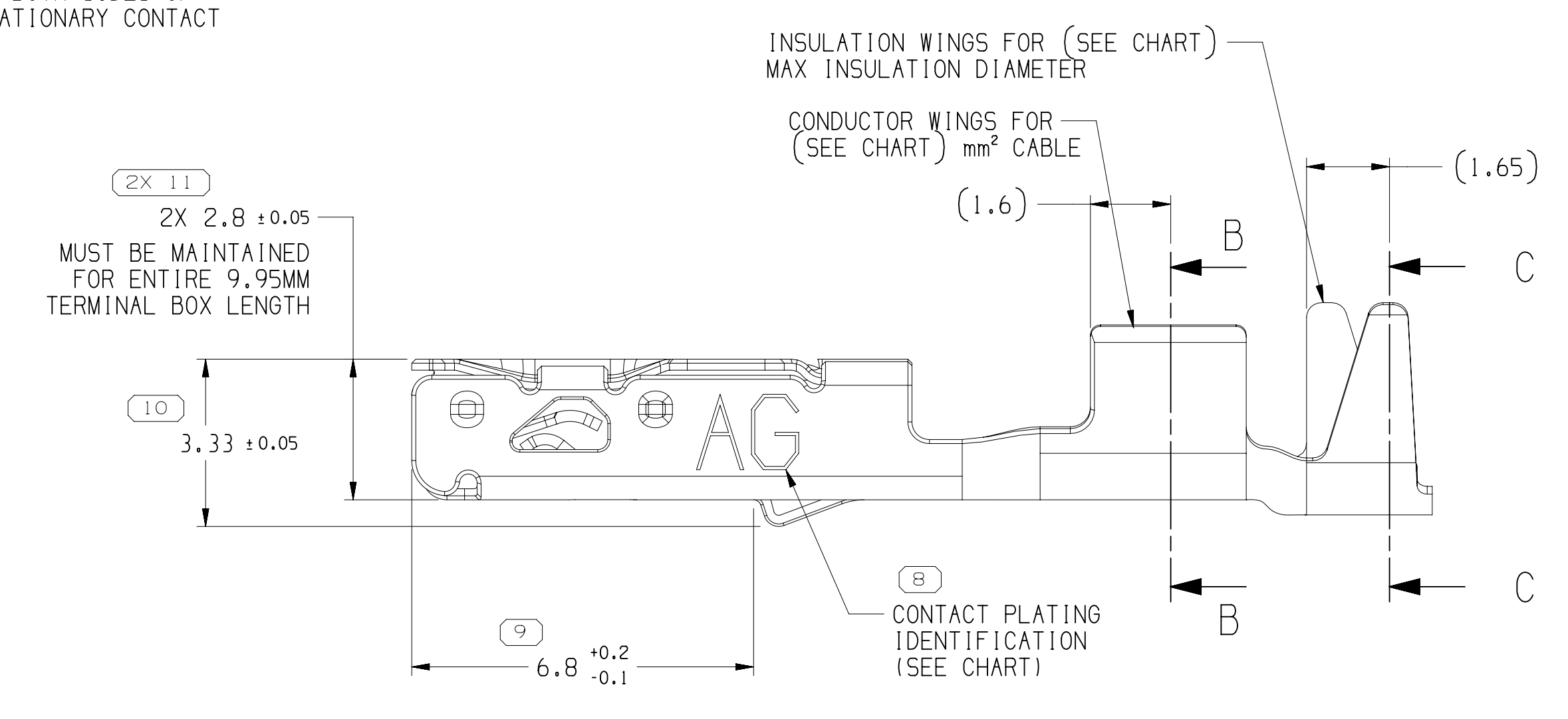
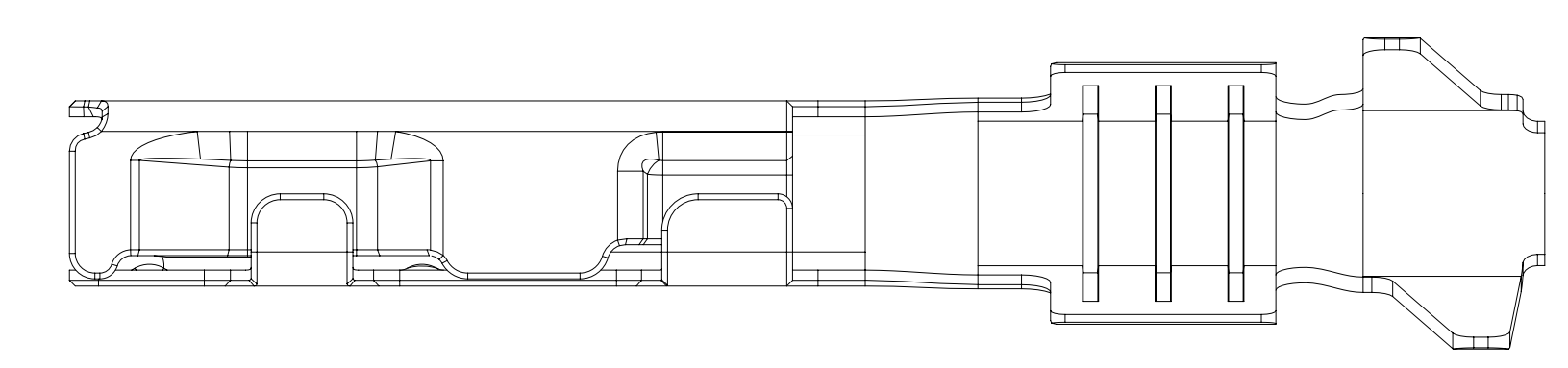
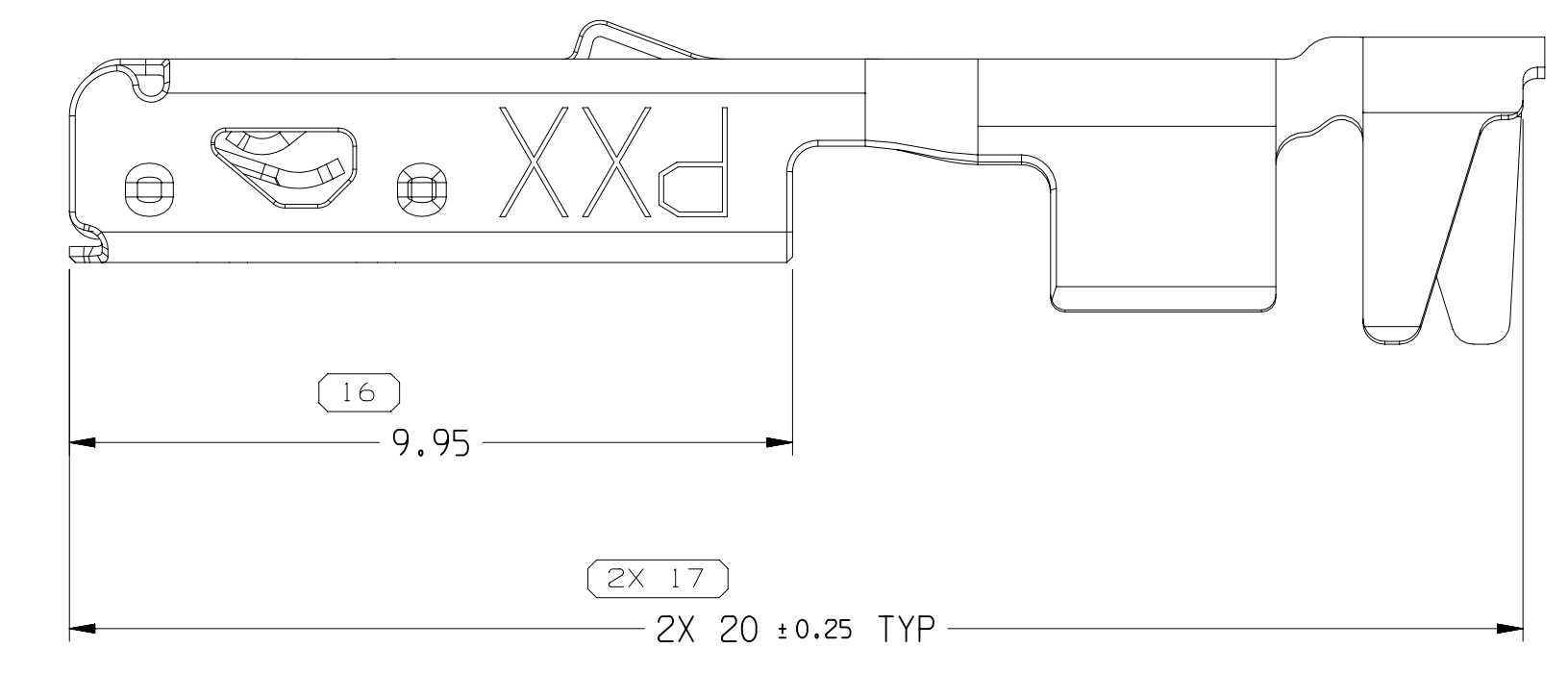
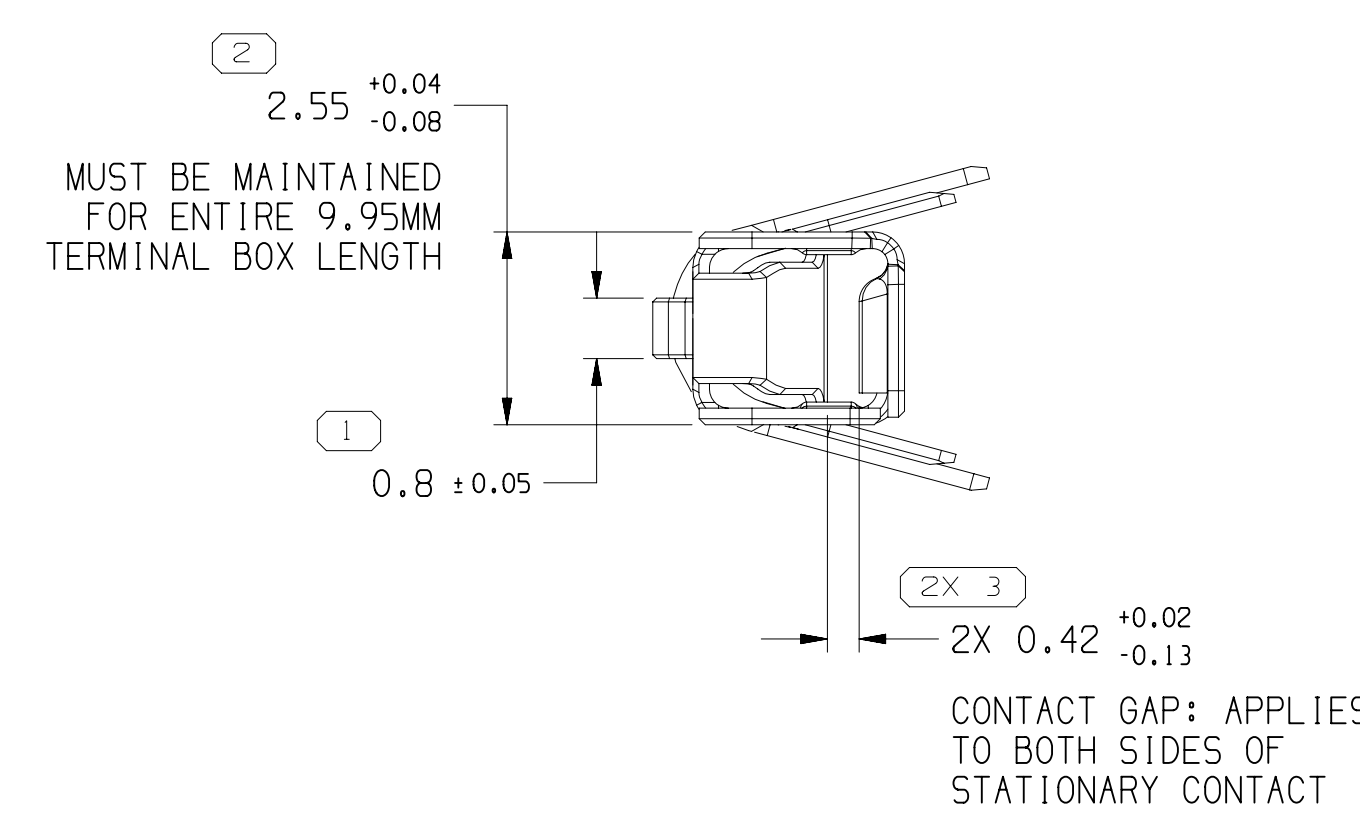


SYMBOL DEFINITION		TOTAL NO OF INSPECTIONS REQUIRED	MISSING SYMBOLS
A DIMENSION WITHOUT AN INSPECTION REPORT SYMBOL DOES NOT REQUIRE INSPECTION. IT MAY BE CONTROLLED ON THE INDIVIDUAL COMPONENT DRAWING.		23	NO MISSING SYMBOL NUMBER
		18	

DWS STATUS		ZONE		REVISION HISTORY		AUTH		DR		APVD	
DATE	STG	REV	N/P	CHG							
02NO18	R	01	-	-	ALL PARTS - RELEASED PART DRAWING	440159	DAV	JAA	RBS		
04DE18	R	02	-	-	ALL PARTS - UPDATED PDM ATTRIBUTES	441753	LVD	JAA	LES		
14DE18	R	03	-	-	35138795,96 - UPDATED PART AVAILABILITY	441933	JAA	JAA	AGH		



- NOTES
- UNLESS OTHERWISE SPECIFIED AND/OR INDICATED:  
DIMENSIONS ARE TO FACE OF VIEW SHOWN AND AUTOMATICALLY ROUNDED BY COMPUTER FOR INSPECTION (SEE MATH MODEL FOR PRECISE DIMENSIONS). FOR ALL OTHER DIMENSIONS NOT SHOWN BUT REQUIRED FOR TOOL BUILD, SEE MATH MODEL FOR PRECISE TOOL PATH DATA.
  - RECOMMENDED MATING BLADE THICKNESS 0.8 <sup>+0.04</sup>/<sub>-0.03</sub>MM  
RECOMMENDED MATING BLADE WIDTH NOT TO EXCEED 1.6MM AND NO LESS THAN 1.1MM. SEE USCAR EWCAP-001 (1.5 BLADE) FOR MATING BLADE REQUIREMENTS.
  - DO NOT PROBE, TEST OR OTHERWISE CONTACT THE INTERIOR REGION (THE SPRING OR ANY MOVING PART) OF THIS TERMINAL. SEVERE DAMAGE CAN OCCUR, COMPROMISING THE PERFORMANCE OF THE ELECTRICAL INTERFACE.
  - MAXIMUM CURRENT CAPACITY AS DEFINED BY USCAR-2 R5 SECTION 5.3.3 IS 22 AMPS WITH 2.0MM<sup>2</sup> COPPER CABLE.
  - \* DENOTES DIMENSIONS MADE AT CUT-OFF AND CRIMP DIE
  - THIS TERMINAL CAN BE USED WITH USCAR CAVITY STANDARD EWCAP-002
  - MAXIMUM INSULATION CRIMP WIDTH OF 2.9MM AND HEIGHT OF 3.4MM FOR CABLE SIZE UP TO 2.7MM O.D.
  - PLATING TYPE:  
I. SILVER 2.0 - 3.0 MICROMETERS THICK OVER NICKEL UNDERPLATE 0.127 - 0.510 MICROMETERS THICK.  
II. MATTE TIN 1.9 - 7.0 MICROMETERS THICK OVER NICKEL UNDERPLATE 0.127 - 0.510 MICROMETERS THICK.
  - PARTS MEET THE PERFORMANCE REQUIREMENTS OF GWN3191 DEC 2007 AND SAE/USCAR-2 R5 REVISIONS FOR THE FOLLOWING CLASSIFICATIONS:  
TEMPERATURE CLASS 3 (1-40° C TO +125° C)  
VIBRATION CLASS 1 (ON BODY OR CHASSIS)  
SEALING CLASS 1 (UNSEALED) FOR GAGE I.D. 25 & 14  
SEALING CLASS 2 & 3 (SEALED-CONNECTOR DEPENDENT) FOR GAGE I.D. 21 & 17

PART NO	REV	N/P	MAT'L SPEC	CONTACT AREA PLATING TYPE (SEE NOTE #8)	CRIMP AREA PLATING TYPE (SEE NOTE #8)	CONTACT PLATING I.D	MAT'L SIZE	I.D.	SIZE (MM <sup>2</sup> )	DIAMETER	B <sub>1</sub> ±0.15	B <sub>2</sub> ±0.25	(H <sub>1</sub> )	(H <sub>2</sub> )
35138794	01	AA	COPPER ALLOY	I	II	AG	0.22 X 27.5	14	1.5 - 2	2 - 2.8	3.6	4.3	3.5	4.2
35138795	01	AB	COPPER ALLOY	I	II	AG	0.22 X 27.5	17	0.75 - 1	1.7 - 2.34	2.5	3.6	2.6	3.6
35138796	01	AB	COPPER ALLOY	I	II	AG	0.22 X 27.5	21	0.35 - 0.5	1.2 - 1.83	2.1	3	2.1	3
35138797	01	AA	COPPER ALLOY	I	II	AG	0.22 X 27.5	25	0.13 - 0.22	0.81 - 1.2	1.5	1.9	1.5	1.7

2 PROCESS SENSITIVE DIMENSION	THIRD ANGLE PROJECTION	DO NOT SCALE USE MATH DATA
DIMENSIONS ENCLOSED IN ( ) INDICATE REFERENCE DIMENSING AND NO TOLERANCE LIMITS ARE ESTABLISHED		
DIRECTIONAL RANGE (MM)	CHART D	
FROM 0 TO 12	> 12	
TOLERANCE UNLESS OTHERWISE SPECIFIED		
±0.1	±0.2	
ANGULAR TOLERANCE ±2°		

**APTIV**  
CONNECTION SYSTEMS  
WARREN, OH  
COPYRIGHT 2018 APTIV. ALL RIGHTS RESERVED.

THIS DRAWING IS THE PROPERTY OF APTIV AND CONTAINS APTIV CONFIDENTIAL INFORMATION. THE REPRODUCTION, DISTRIBUTION AND UTILIZATION OF THIS DOCUMENT OR ITS RELATED CAD DATA, AS WELL AS COMMUNICATION OF ANY CONTENT TO OTHERS, WITHOUT EXPRESS AUTHORIZATION, IS PROHIBITED.

DR	DATE
APVD1 DANIEL ALVAREZ	02NO18
APVD2 J. S. ALVARADO	02NO18
APVD3 R. SNADER	07NO18
APVD4	
APVD5	

SUBSTANCES OF CONCERN AND RECYCLED CONTENT PER APTIV 10949001

DRAWING NAME: TAXI TERM F OCS 1.5

DRAWING NUMBER: 13849927

SIZE: A0  
SCALE: 10:1  
FRAME NO: 1 OF 1  
SHEET NO: 5 OF 5  
STG REV N/P: R 03