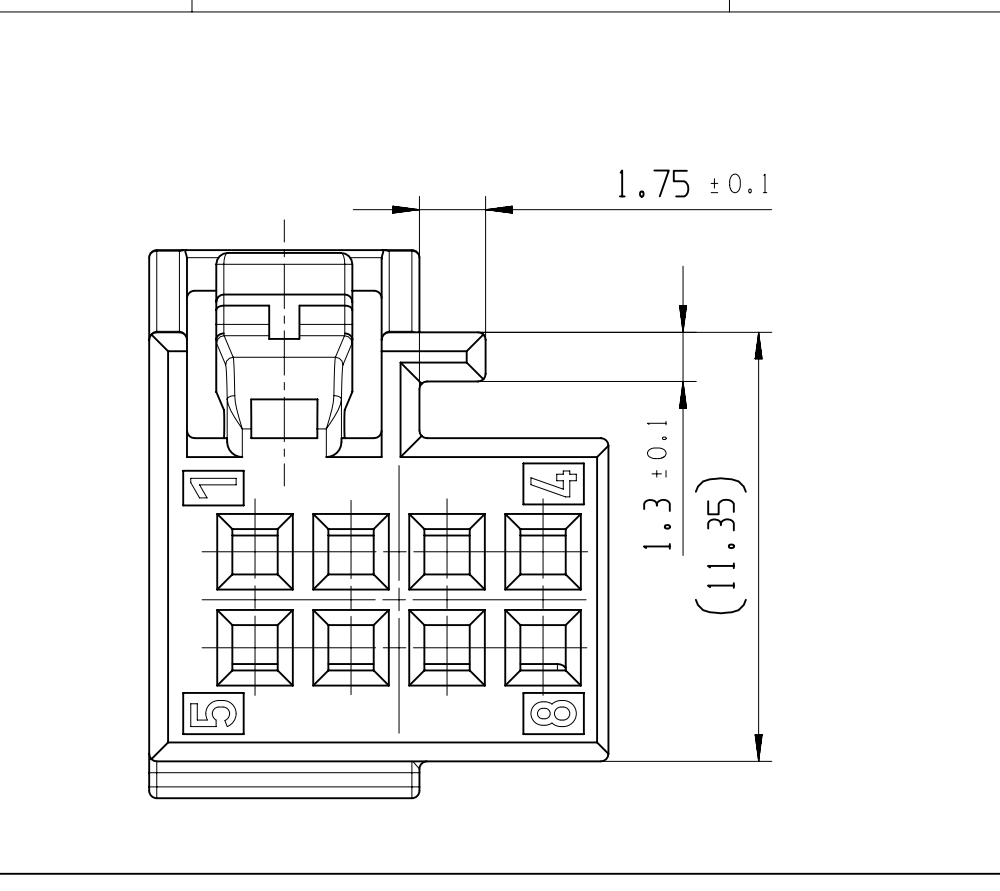
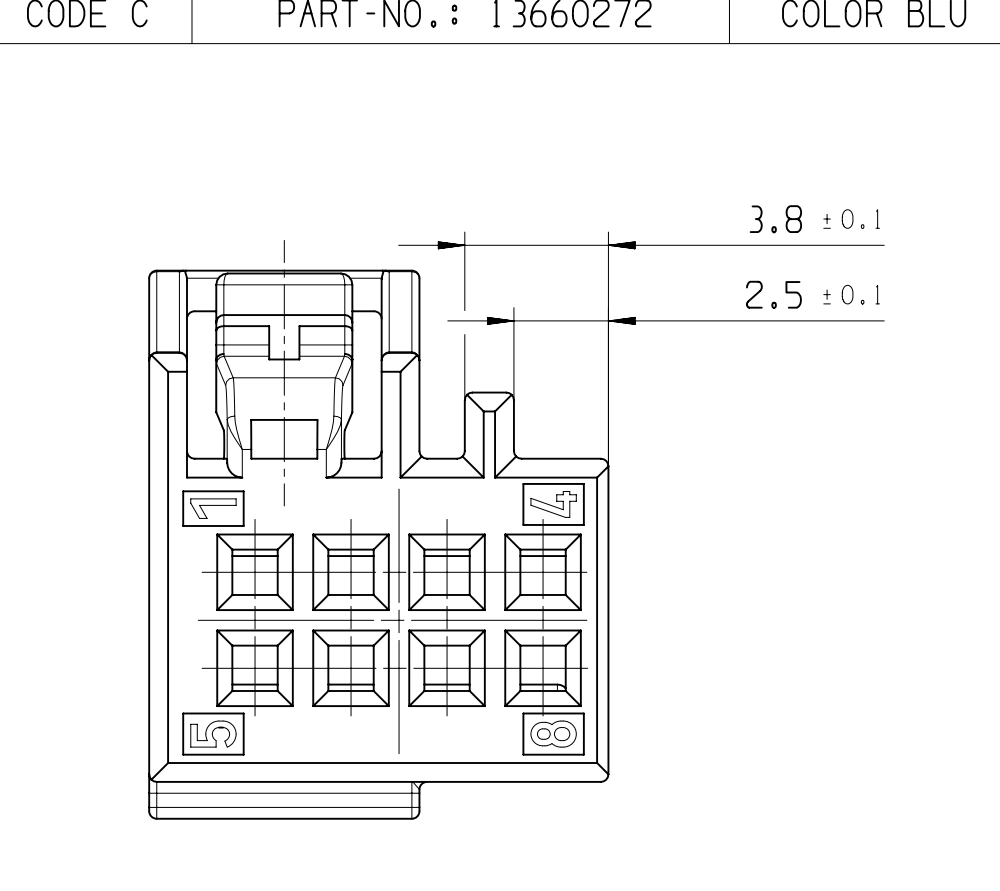
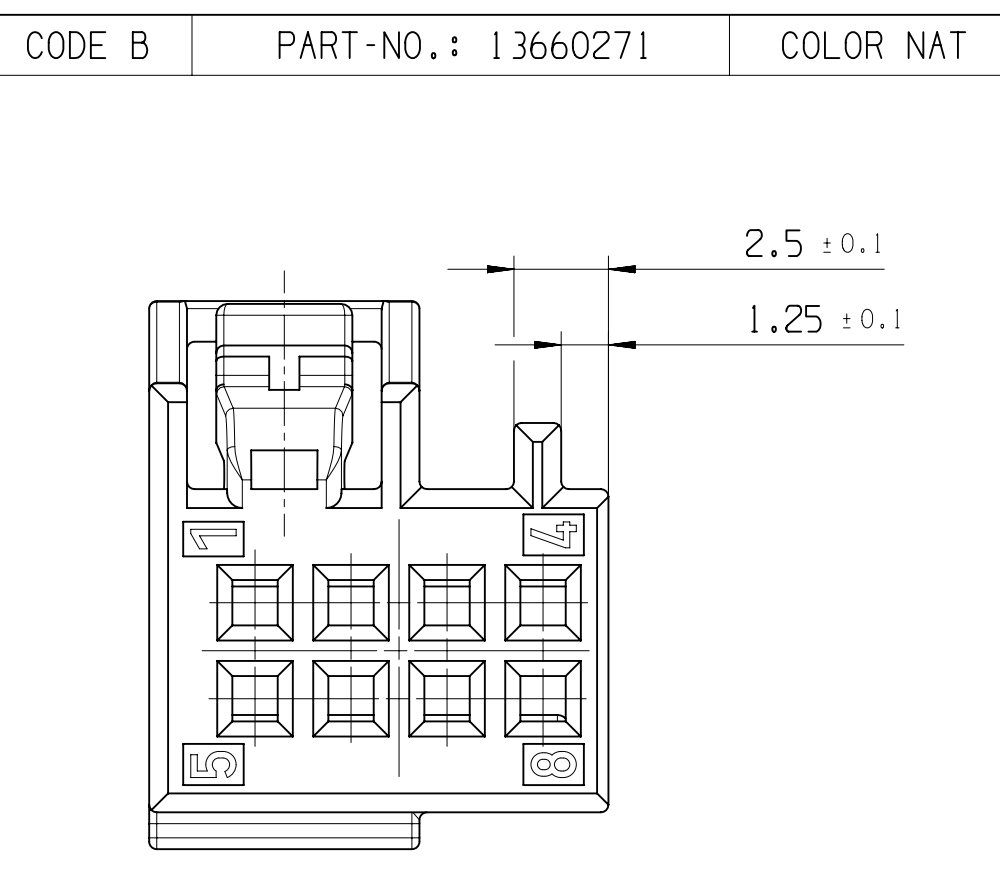
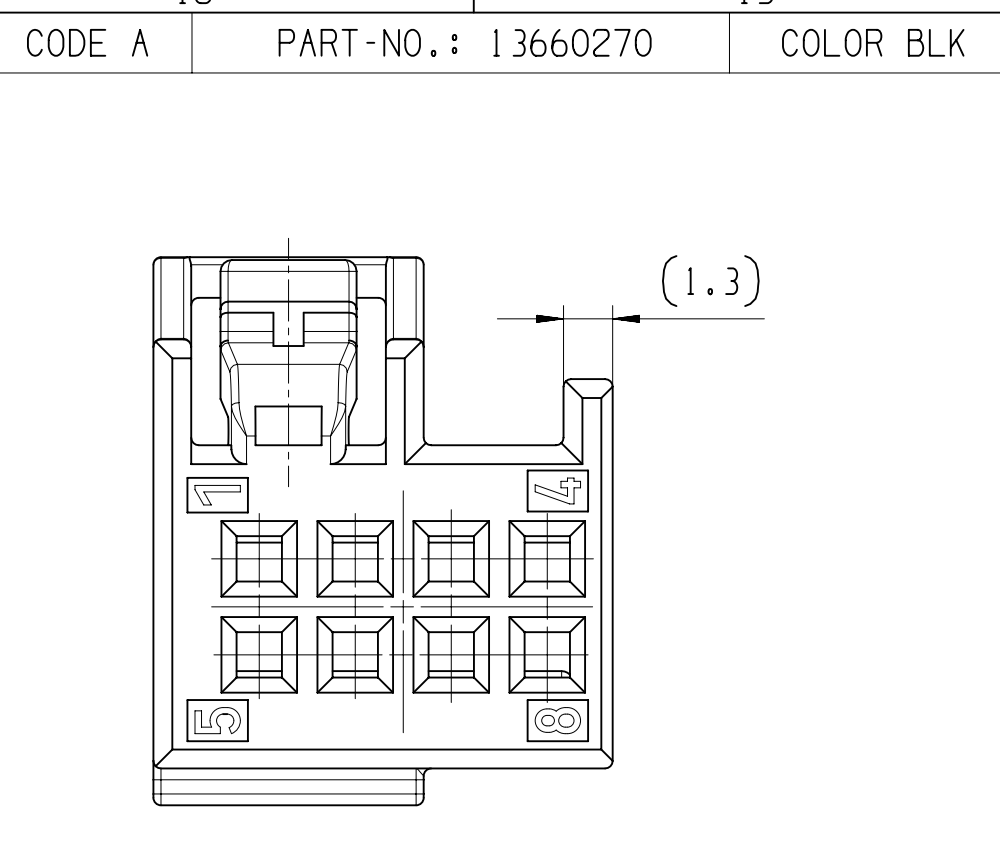
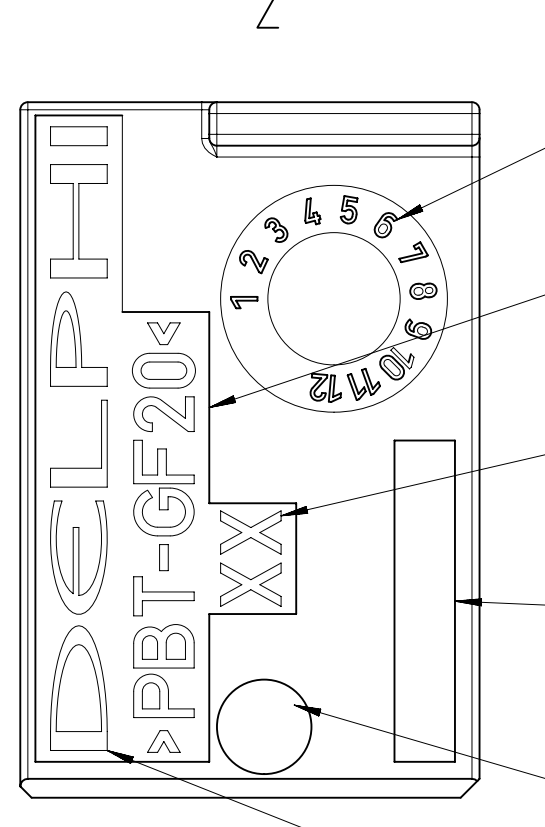
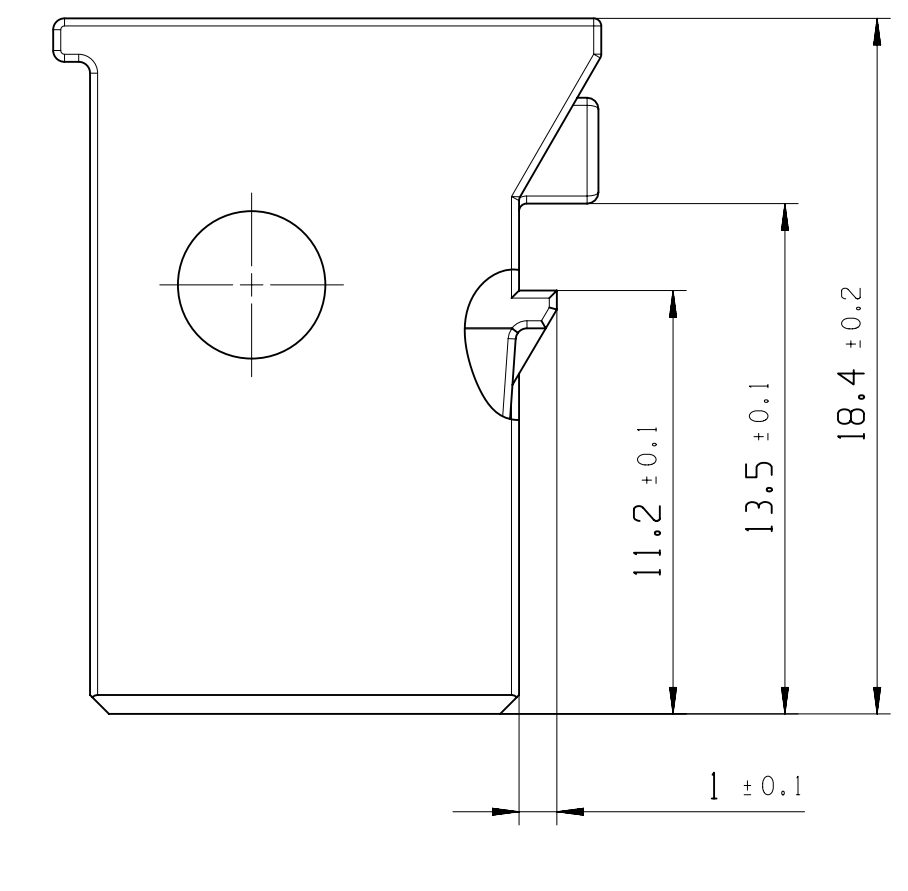
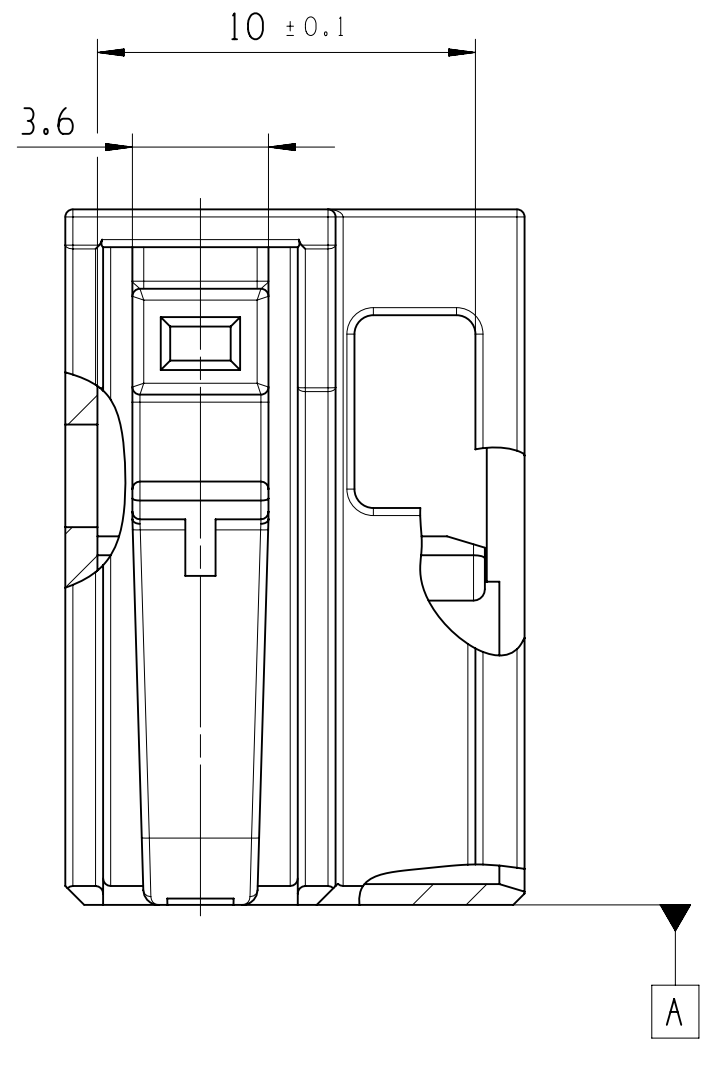
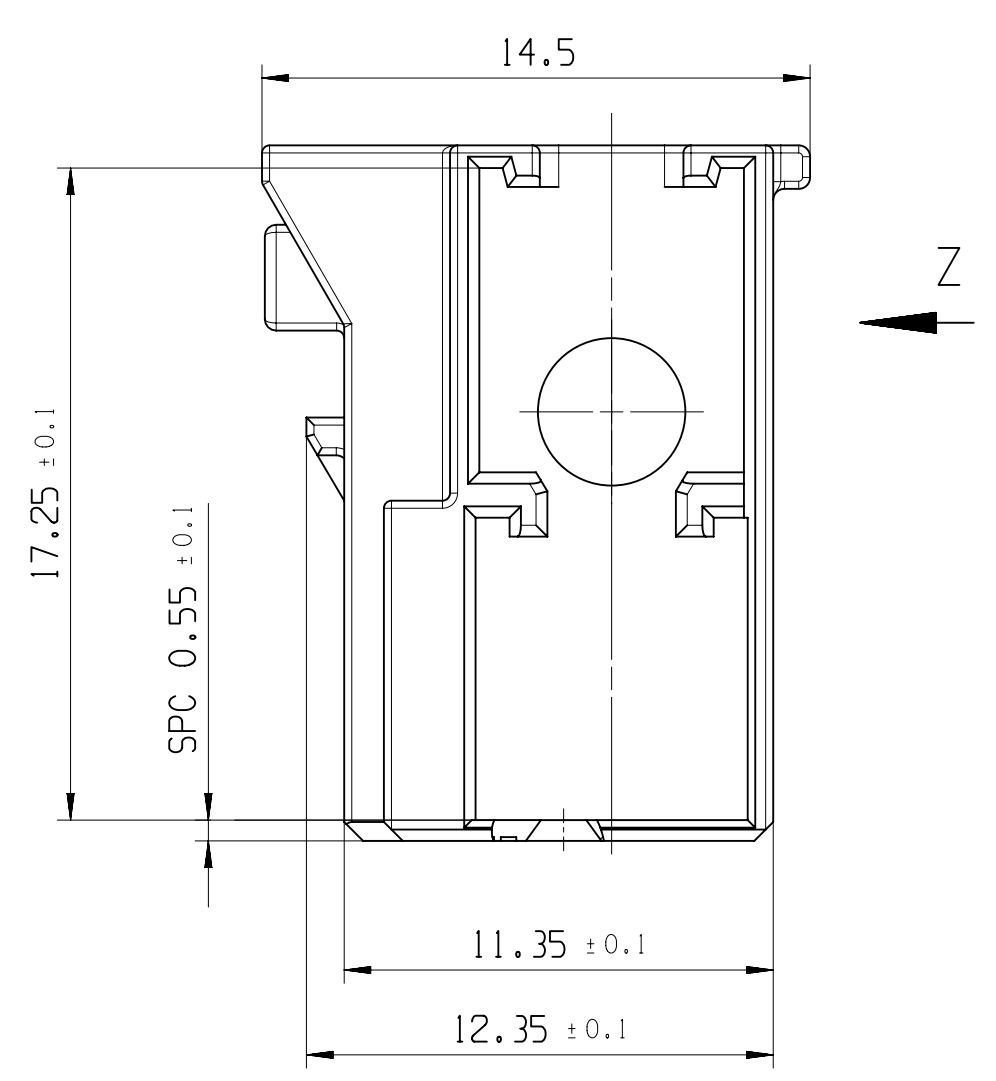
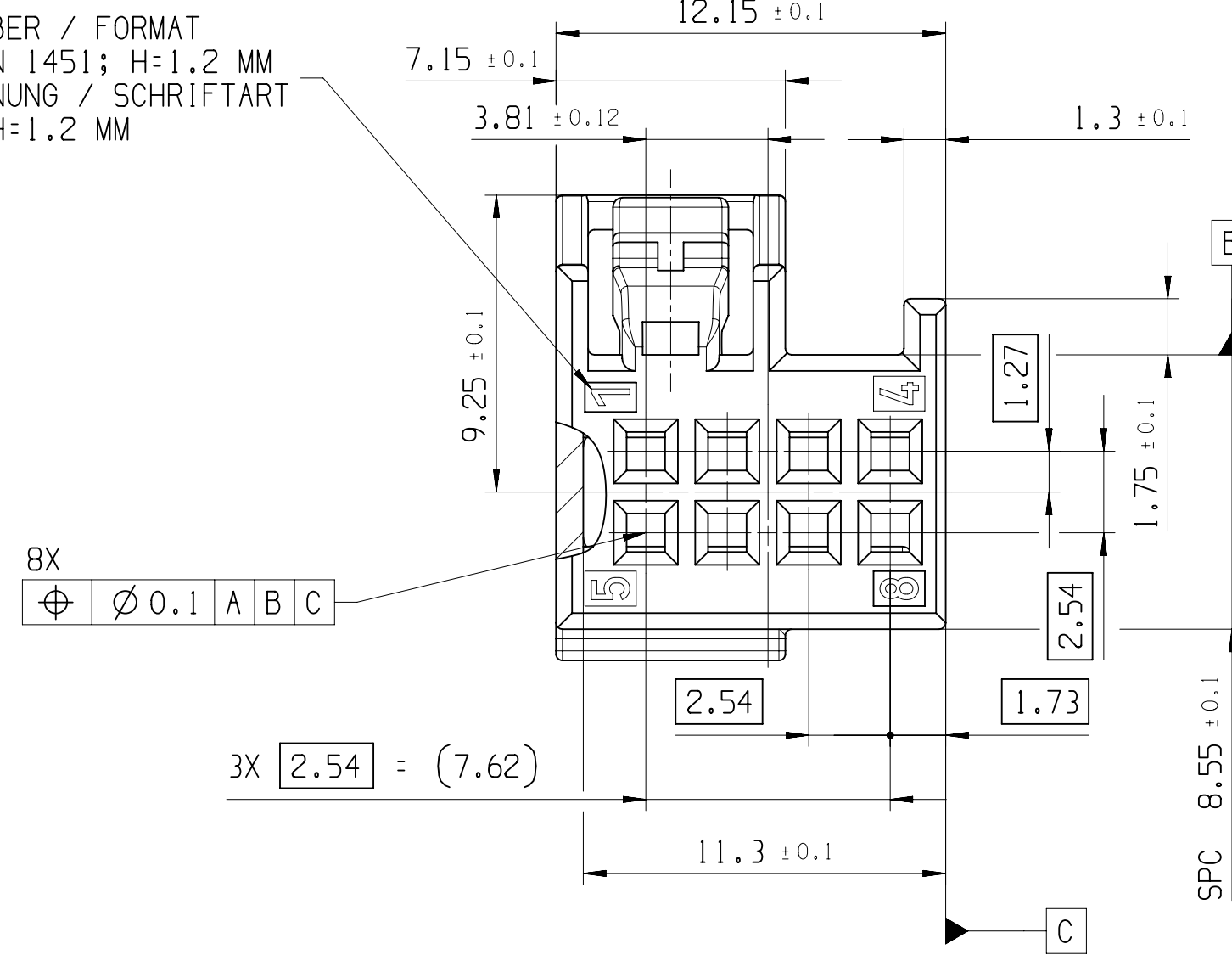


COD	PART-NO.:	CHG PART-REV	DATE DATUM	CUSTOMER NUMBER KUNDENNUMMER	INDEX	MATERIAL WERKSTOFF	SIMILAR TO BAL	DWG STATUS DATE	STG	REV	IN	PL	CHG	ZONE	REVISION HISTORY	AUTH	DR	APVD 1	APVD 2	
A	13660270	01	16MY13	---	-	PBT GF20 BLK	9011	16MY13	R	01	AA				INITIAL RELEASE / FREIGABE			N.PAP	O.HAC	SYS
B	13660271	01	16MY13	---	-	PBT GF20 NAT	-	25JUN20	R	01	AA				REPLACEMENT INSERT REVISED - BLANK WAS DRAWLER			C.ELI	O.HAC	SYS
C	13660272	01	16MY13	---	-	PBT GF20 BLU	5012								NECHSELNSETZ GEÄNDERT - BLANK WUR DRAWLER					
D	13660273	01	16MY13	---	-	PBT GF20 VLT	4004								COLOR ADDED TO CHART / FARBE IN TABELLE HINZUG. DISTRI. CODE DISTRIBUTIBARE WSKF ABG. LIMITED					



PART CAVITY NUMBER / FORMAT
ACCORDING TO DIN 1451: H=1.2 MM
KAMMERKENNZEICHNUNG / SCHRIFTTART
NACH DIN 1451: H=1.2 MM



DATE INSERT SIMILAR FIRM HASCO Z 485/6/1;
HAS TO BE THE MANUFACTURING DATE
DATUMSSTEMPEL AENLICH FA. HASCO Z 485/6/1;
ENTSPRECHEND DEM HERSTELLUNGSDATUM

MATERIAL NAME ACCORDING TO VDA 260 /
FORMAT ACCORDING TO DIN 1451: H=1.6 MM
WERKSTOFFKENNZEICHNUNG NACH VDA 260 /
SCHRIFTTART NACH DIN 1451: H=1.6 MM

TOOL CAVITY NUMBER / FORMAT
ACCORDING TO DIN 1451: H=1.6 MM
NESTKENNZEICHNUNG / SCHRIFTTART
NACH DIN 1451: H=1.6 MM

REPLACEMENT INSERT - BLANK
WECHSELEINSATZ - BLANK

INDEX REPLACEMENT INSERT /
FORMAT ACCORDING TO DIN 1451: H=1.6 MM; SEE CHART
WECHSELEINSATZ INDEXSTEMPEL /
SCHRIFTTART NACH DIN 1451: H=1.6 MM; SIEHE TABELLE

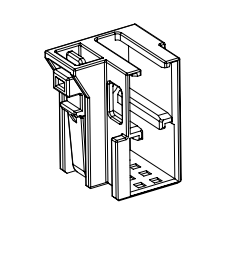
MANUFACTURER MARK A:1.5 MM
HERSTELLERZEICHEN A:1.5 MM

- REMARKS:
- KEYING A DRAWN
 - NOT DIMENSIONED GEOMETRY HAS TO BE TAKEN FROM THE CORRESPONDING 3D DATA-FILE
 - MAXIMUM DRAFT ANGLE 0°30'
 - LETTERS AND ENGRAVINGS 0.1 MM RAISED; SIGN PLANE 0.1 MM RECESSED
 - SPC : STATISTICAL PROCESS CONTROL
 - MATING PART: INSERT B WAY DWG-NO. : 15493343

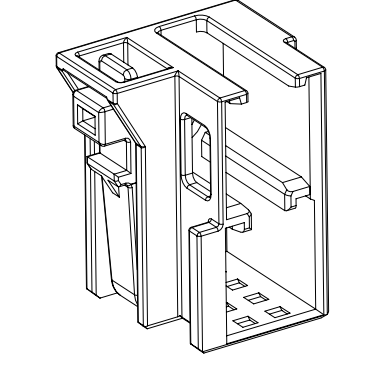
- BEMERKUNGEN:
- CODIERUNG A GEZEICHNET
 - NICHT DIMENSIONIERTE GEOMETRIEN SIND DEM ENTSPRECHENDEN 3D DATENFILE ZU ENTNEHMEN
 - ZULAESSIGE ENTFORMUNGSSCHRAEGE MAX. 0°30'
 - SCHRIFTEN UND GRAVUREN 0.1 MM ERHABEN; SCHRIFTFLAECHE 0.1 MM VERTIEFT
 - SPC : STATISTISCHE PROZESS KONTROLLE
 - PASSENDES GEGENSTUECK: EINSATZ B POL. DWG-NO. : 15493343

KEY PRODUCT CHARACTERISTICS				
NO & TYPE	DESCRIPTION	RATIONALE	PTS	ZONE
1	SAFETY/COMPLIANCE		0	
2	FIT/FUNCTION		0	
3	S/C CHECKPOINTS		0	
4	F/F CHECKPOINTS		0	

SCALE / MASSSTAB: 1:1



SCALE / MASSSTAB: 2:1



APTIV
CONNECTION SYSTEMS
D-42119 WUPPERTAL

THIS DRAWING IS THE PROPERTY OF APTIV AND CONTAINS APTIV INFORMATION. THE REPRODUCTION, DISTRIBUTION AND UTILIZATION OF THIS DOCUMENT OR ITS RELATED CAD DATA, AS WELL AS COMMUNICATION OF ANY CONTENT TO OTHERS, WITHOUT EXPRESS AUTHORIZATION, IS PROHIBITED.

DESE ZEICHNUNG IST EIGENTUM DER FIRMA APTIV UND ENTHAEHLT APTIV VERTRAEULICHE INFORMATIONEN. DIE REPRODUKTION, VERTEILUNG UND NUTZUNG DIESER DOKUMENTE ODER DIESER ZUGEHOERENDE CAD DATEN, ABER AUCH ALS KOMMUNIKATION VON BEZUGENEN INHALT ZU ANDEREN, IST OHNE BEZUGENEN GENEHMIGUNG DURCH DIE APTIV UNZULASSIG.

DR	DATE
N. PAPURCU	16MY13
O. HACKEL	16MY13
SYS	16MY13

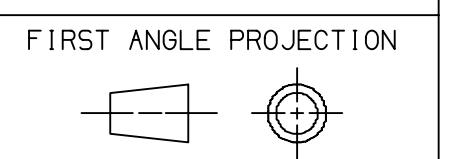
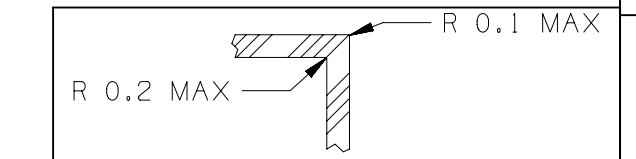
SUBSTANCES OF CONCERN AND RECYCLED CONTENT PER APTIV 10W4001
POTENTIELL GEFÄHRLICHE STOFFE UND REZYKLIERTANTEIL
GEMÄSS APTIV 10W4001

MATERIAL: SEE CHART / SIEHE TABELLE

DRAWING NAME: COVER B WAY FOR MTS 0.64
KAPPE B POL. FUER MTS 0.64

DRAWING NUMBER: 13543539
SIZE: A0
SCALE: 5:1
FRAME NO: 1 OF 1
SHEET NO: 1 OF 1
REV: 01
APP: AA

DTM TO CHECK	DIMENSIONAL RANGE (MM)	CHART	ET
PRUEFMASSE	FROM > 0	> 20	> 30
DIM FOR HELP	TO 20	20	30
HILFSMASSE		100	150
		200	250
		300	400
THEORETIC DIM			
THEORETIC MASS			



DO NOT SCALE
USE MATH DATA