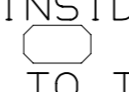
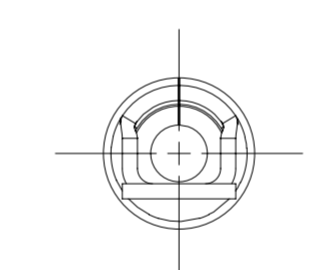
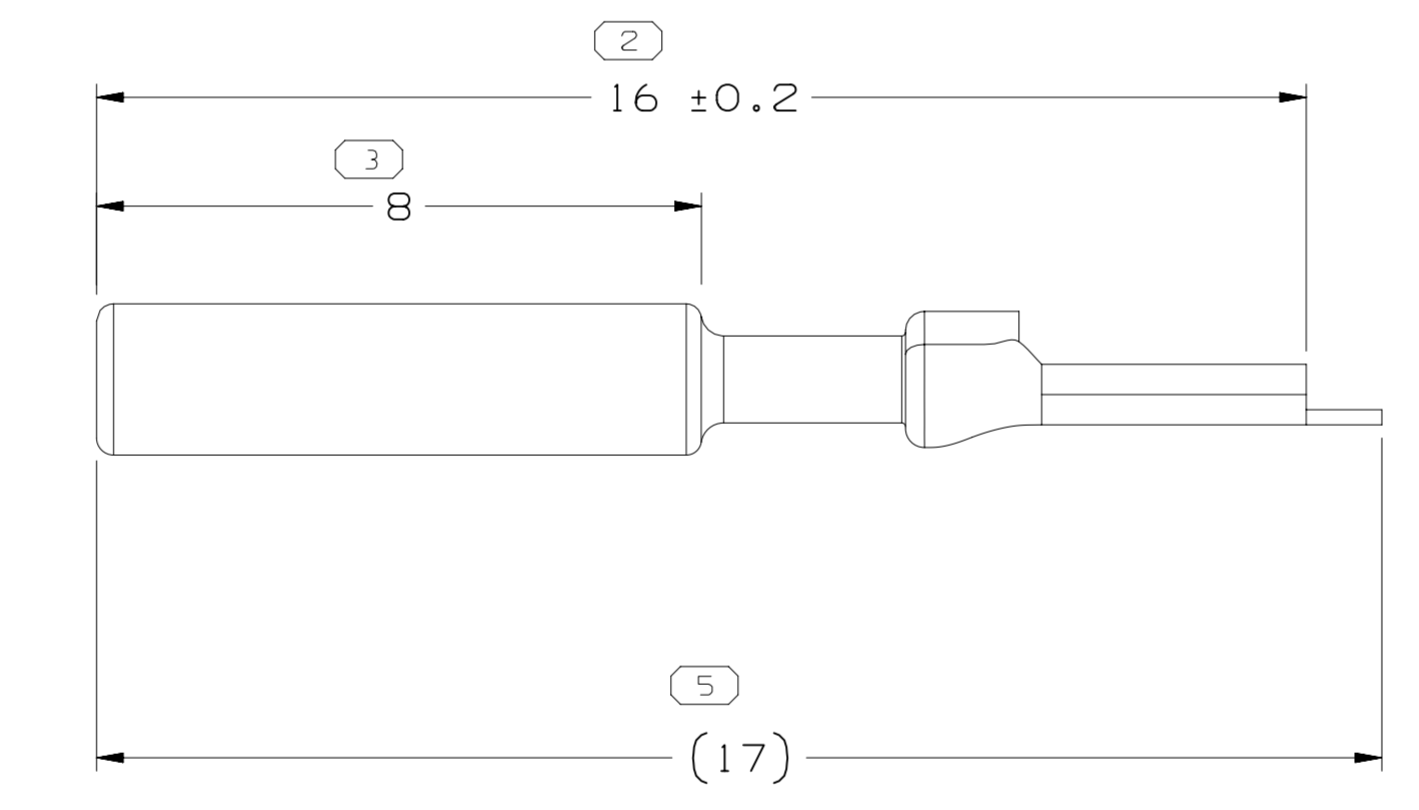
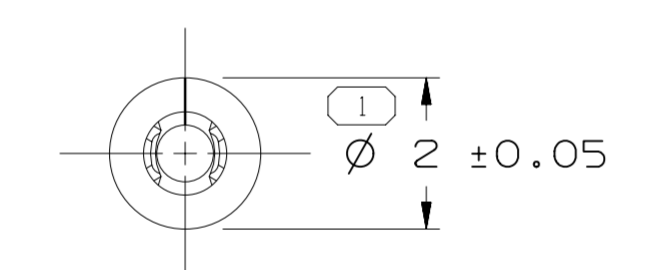
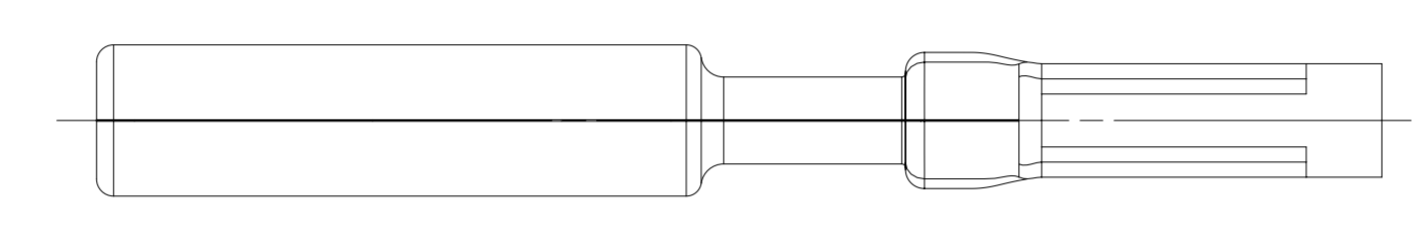
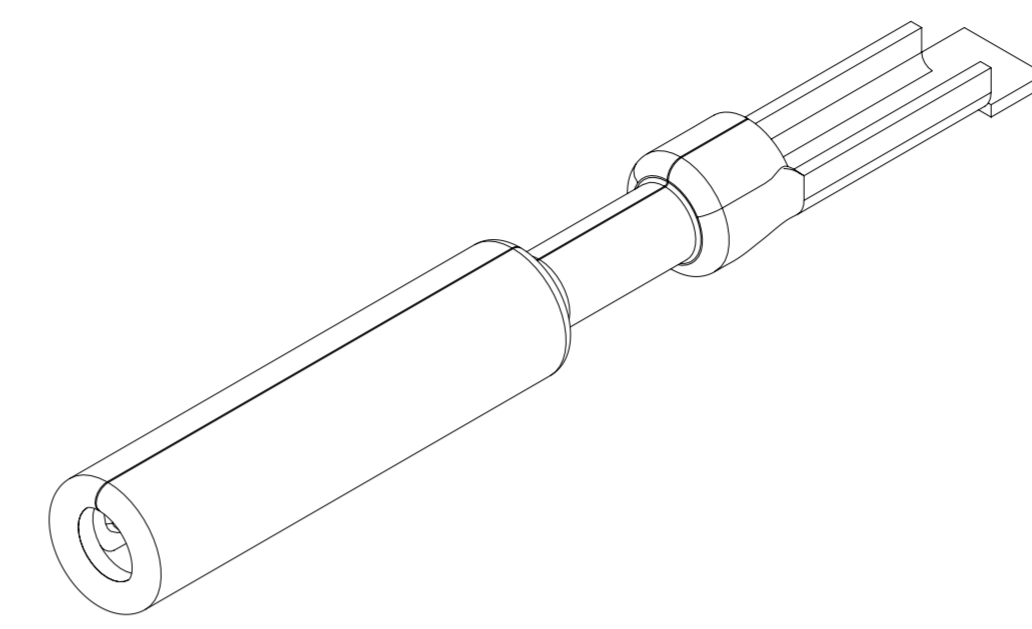


SYMBOL DEFINITION		MISSING NUMBERS		DWG STATUS				REVISION HISTORY				AUTH		DR		APVD	
DATE	STG	REV	N/P	CHG	ZONE	DATE	STG	REV	N/P	CHG	ZONE	AUTH	DR	APVD 1	APVD 2	APVD 3	APVD 4
09AP02	R	B6	-	-		223708	ECB	FRG	ESD			223708	ECB	FRG	ESD		
20JN13	R	B7	-	-		423039	ORA	DCH	JFF			423039	ORA	DCH	JFF		
160C15	R	B8	-	-		431032	NRM	JVM	RPL			431032	NRM	JVM	RPL		
150C19	R	03	-	-		550263	JAA	JAA	OMS			550263	JAA	JAA	OMS		

THE NUMBER INSIDE THE SYMBOL  CORRESPONDS TO THE NUMBER ON THE INSPECTION REPORT FOR THIS DRAWING/PART NUMBER

TOTAL NO. OF SYMBOLS ON DRAWING: 4  
LAST NO. USED: 5



- NOTES
- UNLESS OTHERWISE SPECIFIED AND/OR INDICATED: DIMENSIONS ARE TO FACE OF VIEW SHOWN AND AUTOMATICALLY ROUNDED BY COMPUTER FOR INSPECTION. (SEE MATH MODEL FOR PRECISE DIMENSIONS.) FOR ALL OTHER DIMENSIONS NOT SHOWN BUT REQUIRED FOR TOOL BUILD, SEE MATH MODEL FOR PRECISE TOOL PATH DATA.
  - MATING COMPONENTS OR EQUIVALENT: CONNECTOR 15317915 PIN Ø 1MM
  - MAXIMUM CURRENT CAPACITY IS 7 AMPS.
  - THIS PART IS SONICALLY WELDED TO PART 15317934 TO FORM TERMINAL ASSEMBLY 15317918.

**1** LINE DRAWN THROUGH A PART NUMBER INDICATES THAT PHYSICAL PARTS ARE NOT AVAILABLE FOR ORDERING.

PART NUMBERS THAT DO NOT HAVE A LINE PRESENT INDICATE THAT PHYSICAL PARTS ARE AVAILABLE FOR ORDERING.

CONTACT APTIV SALES TO ASSURE AVAILABILITY OF PARTS.

DWG TYPE: **PART DRAWING**

STYLE: \_\_\_\_\_

VOLUME (CM<sup>3</sup>): \_\_\_\_\_ DISTR CODE: **D**

UNLESS OTHERWISE SPECIFIED THIS DOCUMENT IS IN ACCORDANCE WITH ASME Y14.5M-1994 AS AMENDED BY THE GM GLOBAL DIMENSIONING AND TOLERANCING ADDENDUM - 1997. ALL GEOMETRIC TOLERANCES AND RELATED DATUMS APPLY RFS. RULE #1 (PERFECT FORM AT MMC) DOES NOT APPLY WHEN RELATIONSHIP BETWEEN FEATURES IS ESTABLISHED BY ORIENTATION OR LOCATION TOLERANCES. SEPARATE POSITION CALLOUTS MAY BE GAGED SEPARATELY, REGARDLESS OF DATUM REFERENCE. ALL DIMENSIONS ARE IN MILLIMETERS.

DIMENSIONAL RANGE (MM) CHART E

FROM	0	> 20	> 30	> 70	> 100
TO	20	30	70	100	> 100

TOLERANCE UNLESS OTHERWISE SPECIFIED

±0.15	±0.2	±0.3	±0.4	±0.5
-------	------	------	------	------

ANGULAR TOLERANCE ±2°

THIRD ANGLE PROJECTION

DO NOT SCALE

USE MATH DATA

**NX**

**• APTIV •**

CONNECTION SYSTEMS  
WARREN, OH  
COPYRIGHT 1998 APTIV. ALL RIGHTS RESERVED.

THIS DRAWING IS THE PROPERTY OF APTIV AND CONTAINS APTIV CONFIDENTIAL INFORMATION. THE REPRODUCTION, DISTRIBUTION AND UTILIZATION OF THIS DOCUMENT OR ITS RELATED CAD MATH DATA, AS WELL AS COMMUNICATION OF ANY CONTENT TO OTHERS, WITHOUT EXPRESS AUTHORIZATION, IS PROHIBITED.

DR	DATE
APVD1: FCO. KOPCA	28AP98
APVD2: FCO. KOPCA	28AP98
APVD3: K. MURPHY	05MY98
APVD4	
APVD5	

SUBSTANCES OF CONCERN AND RECYCLED CONTENT PER APTIV-A 10949001

MATERIAL: **GOLD PLATED COPPER ALLOY**

DRAWING NAME: **TERM F MIC/P 100W AU SEALED**

DRAWING NUMBER: **15326101**

SIZE	SCALE	FRAME NO	SHEET NO	STG	REV	N/P
A1	10:1	1 OF 1	1 OF 1	R	03	-

Sheet: N5027c-101-CUS01-S01/03 Date: 15-Oct-19 Time: 14:09:12  
Part: N5027c-101-5019-14:08-164pass-non-w027c