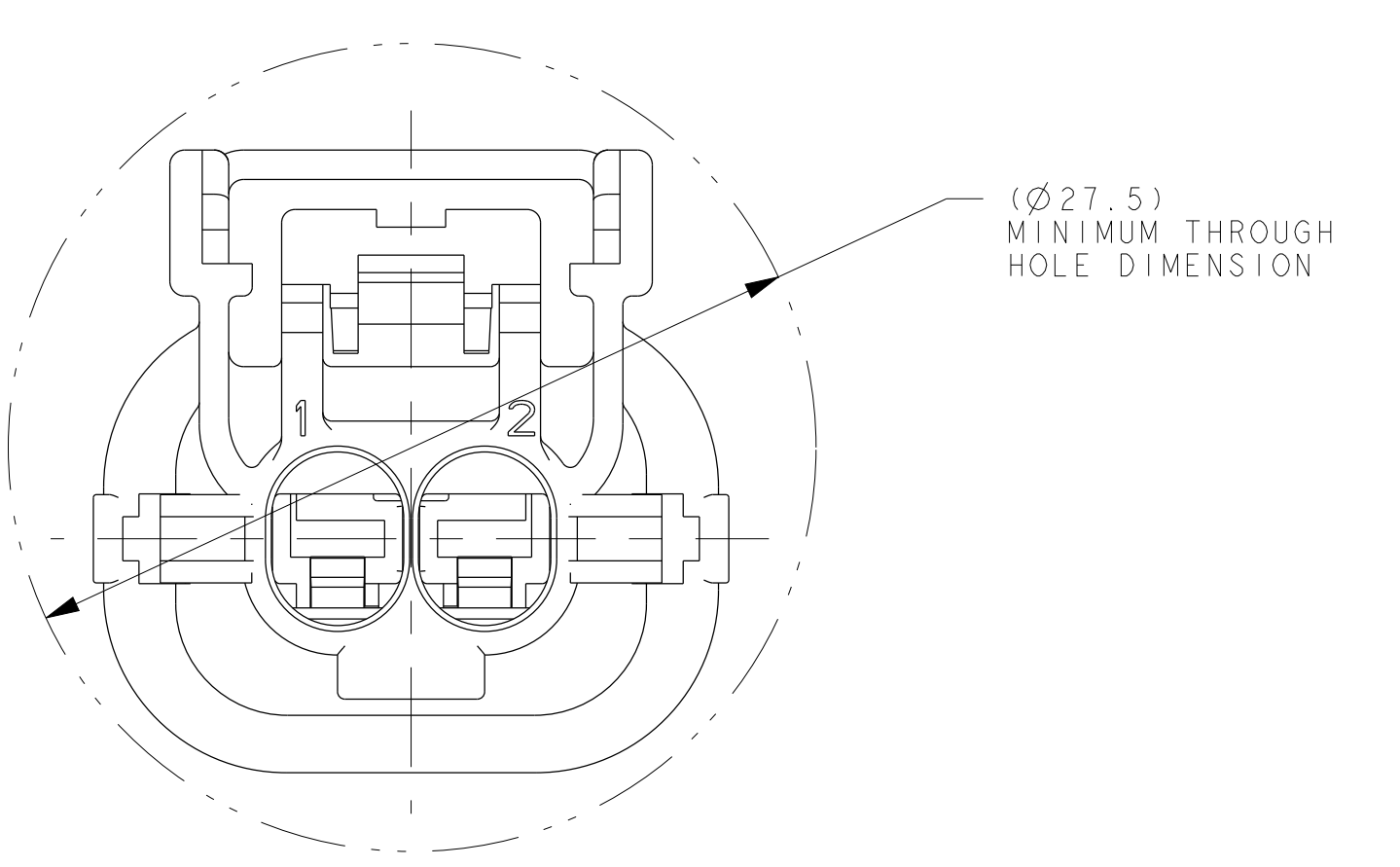
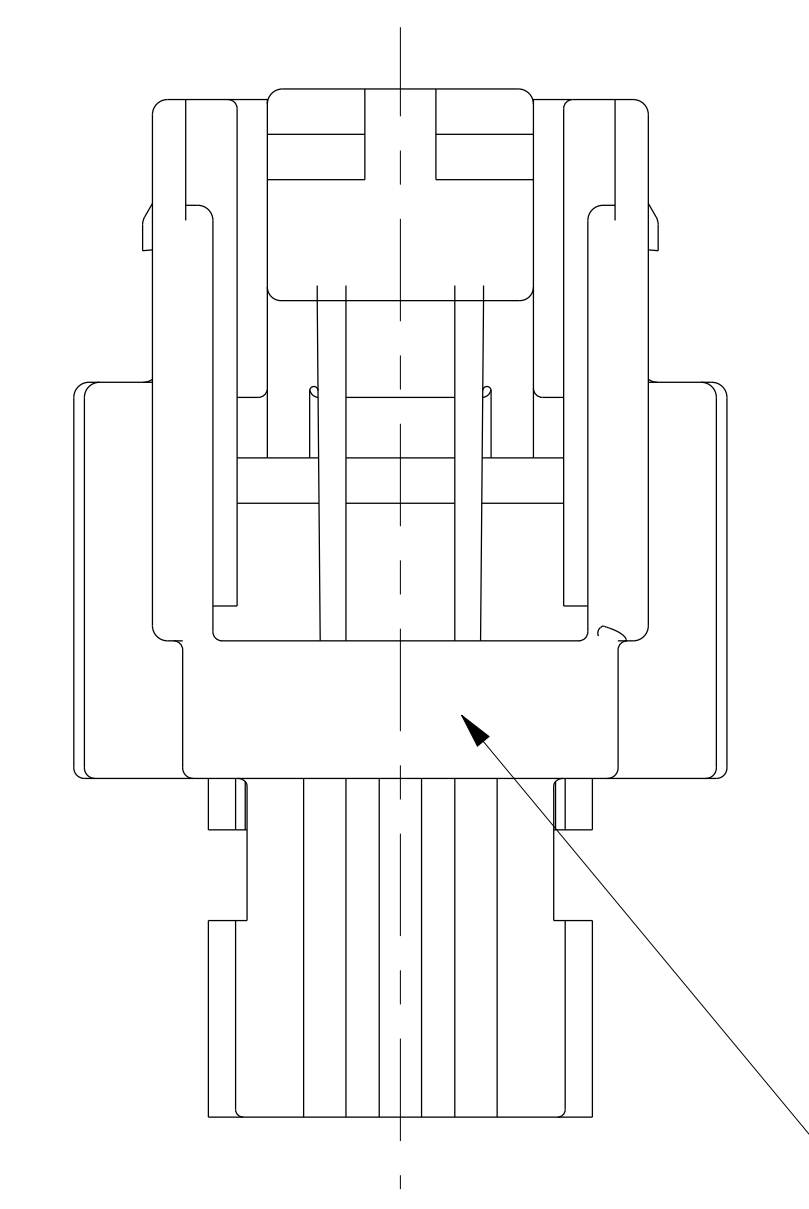
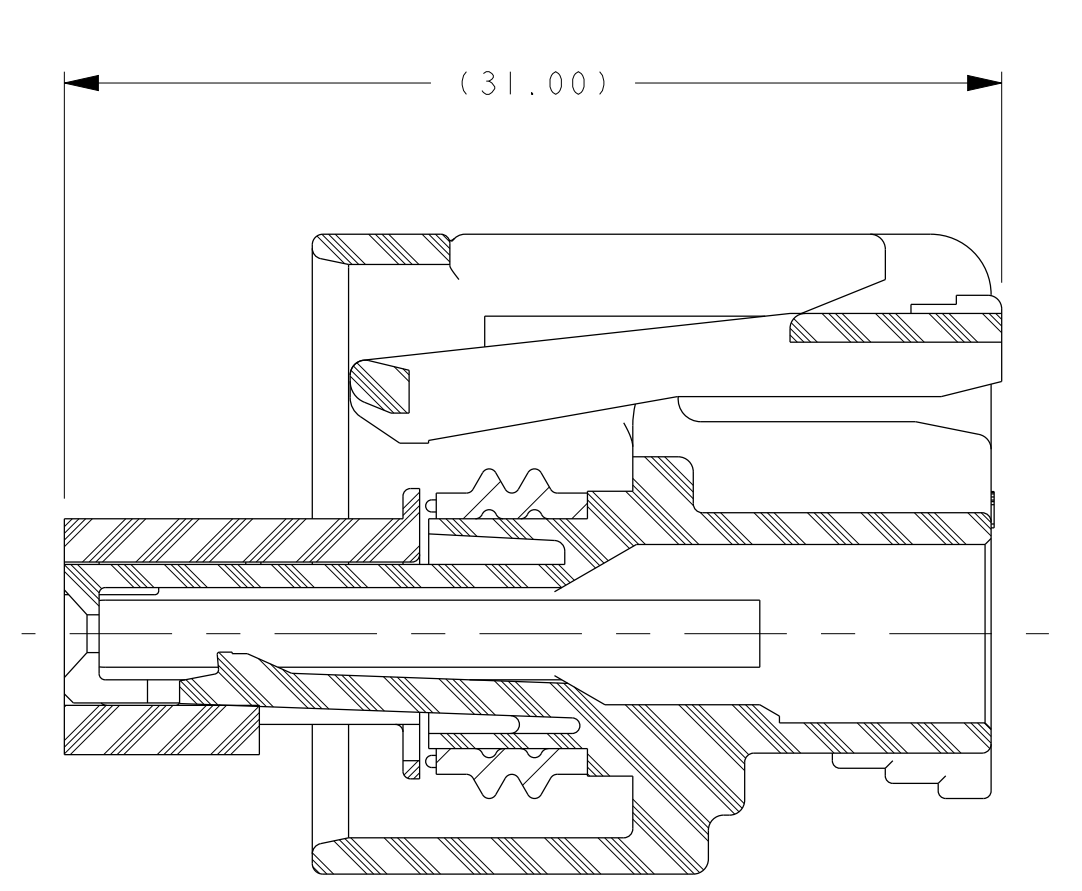
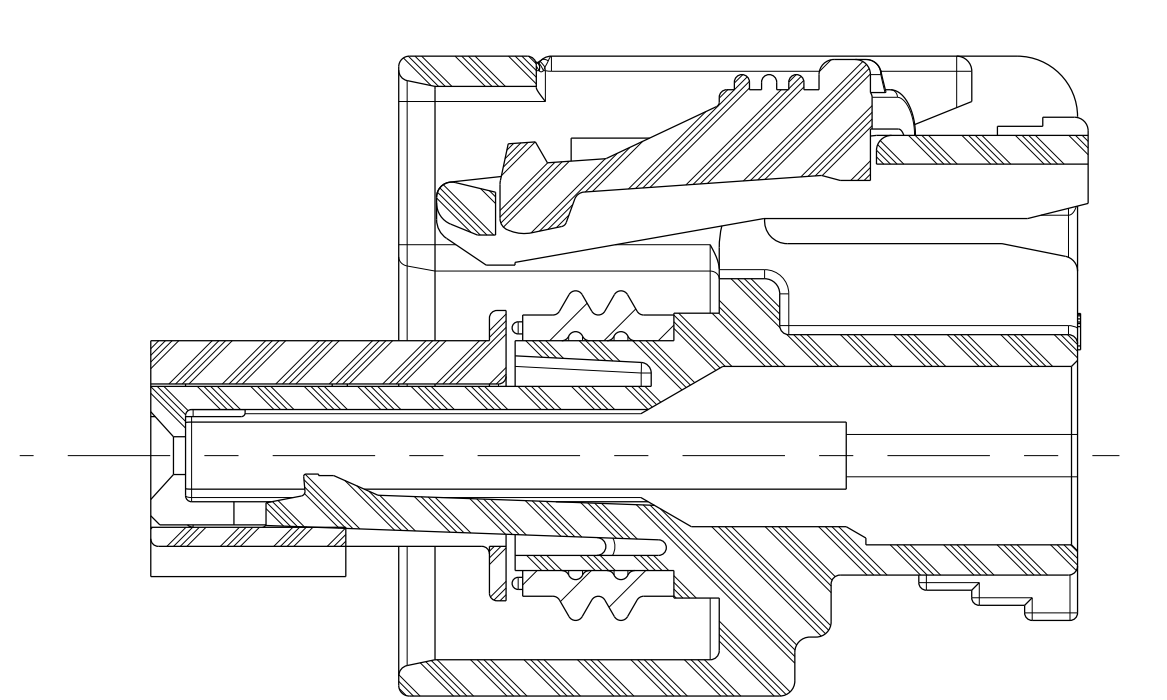
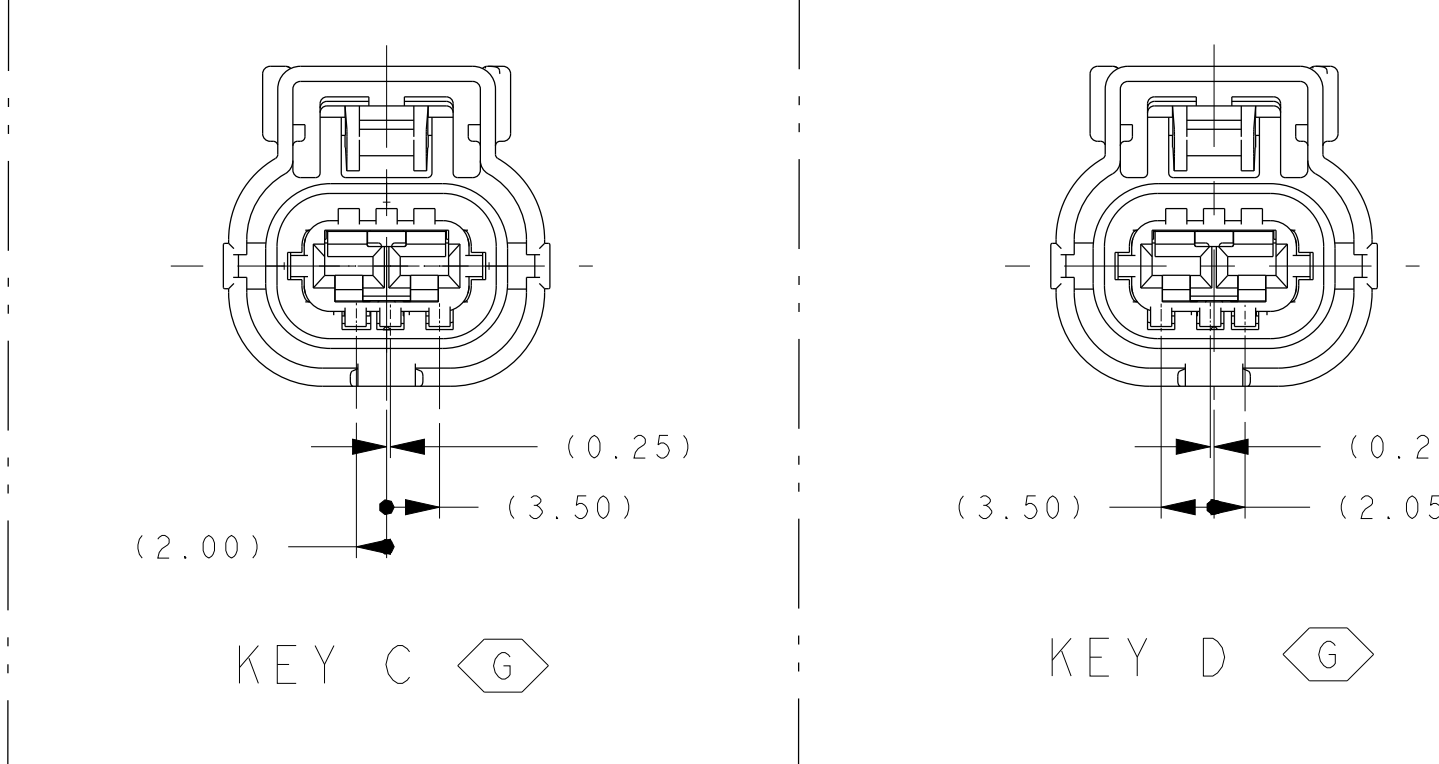
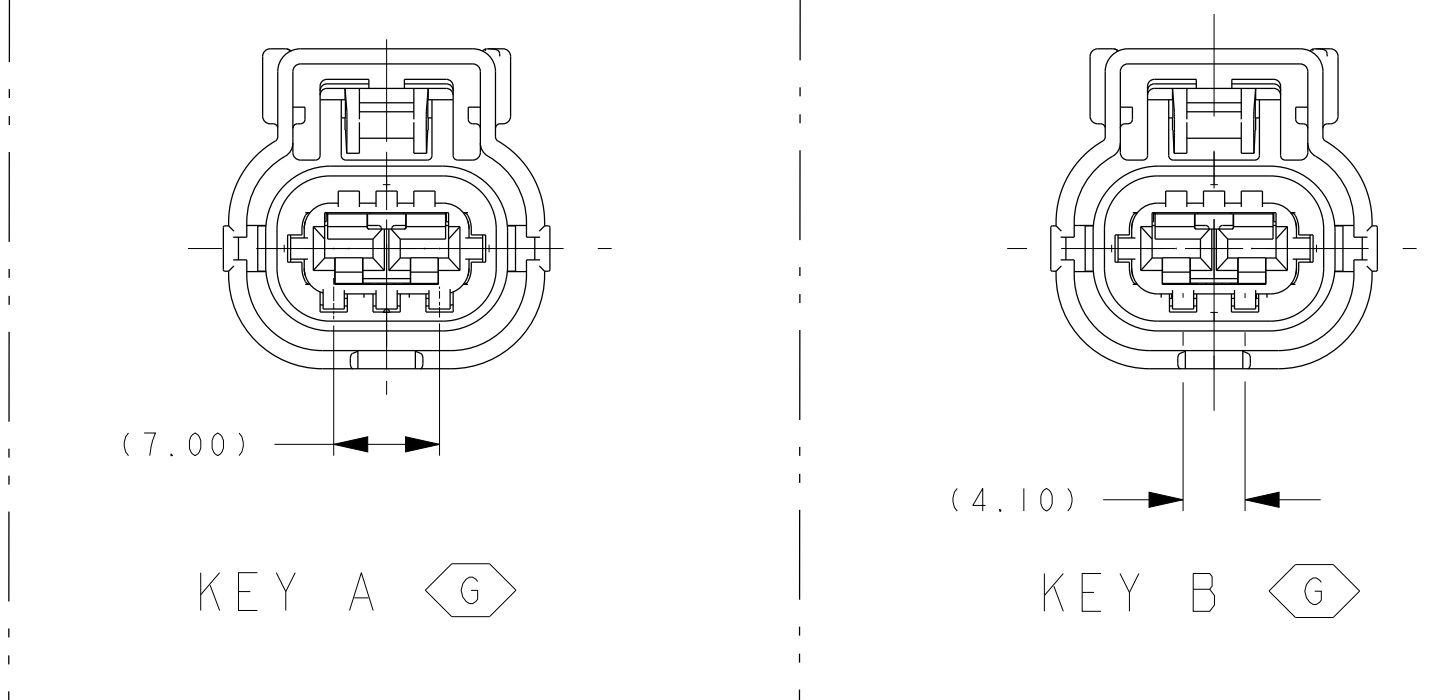
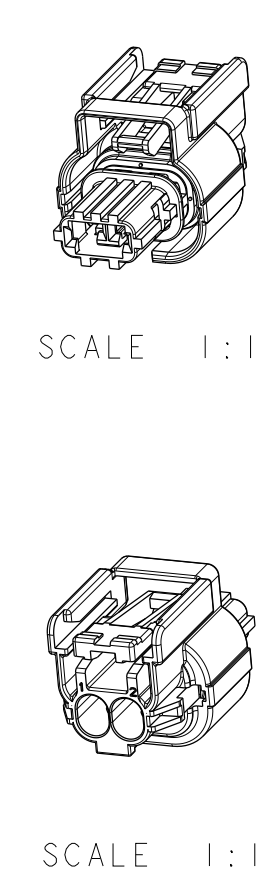
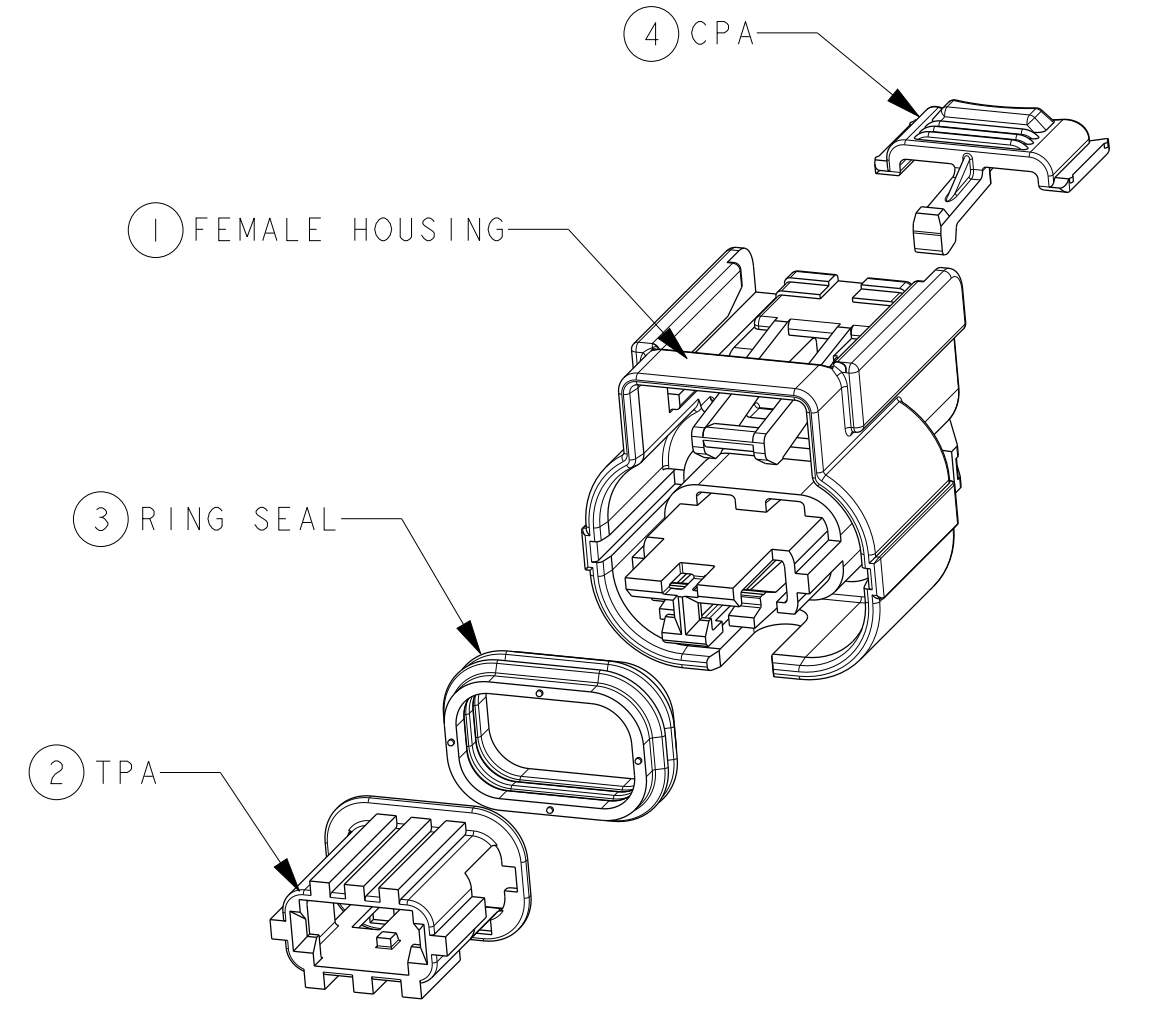


ASSEMBLY PART NUMBER CHART										
PART NUMBERS				KEY OPTION	COMPONENTS					
DELPHI	REV	MVL	REV		ITEM 1	ITEM 2		ITEM 3	ITEM 4	
					INSULATOR (HOUSING)	TPA PA66 GF35	RING SEAL	CPA (RED)		
13821046	01	F019300	A	A	PA66 GF35	COLOR	DELPHI	MVL	SILICONE	PA66 GF35
13919555	01	F119300	A	B	DK GREY	33509847	F645000			
-	-	TBD	-	C	ROYAL BLUE	33509846	F436000			
-	-	TBD	-	D	TBD		TBD		DELPHI 33509852	NO
33509856	02	F809800	B	A	TBD		TBD		MVL F646000	
33509857	02	F909800	B	B	DK GREY	33509847	F645000		BURNT ORANGE	DELPHI 33509852
-	-	TBD	-	C	ROYAL BLUE	33509846	F436000			MVL F752210
-	-	TBD	-	D	TBD		TBD			

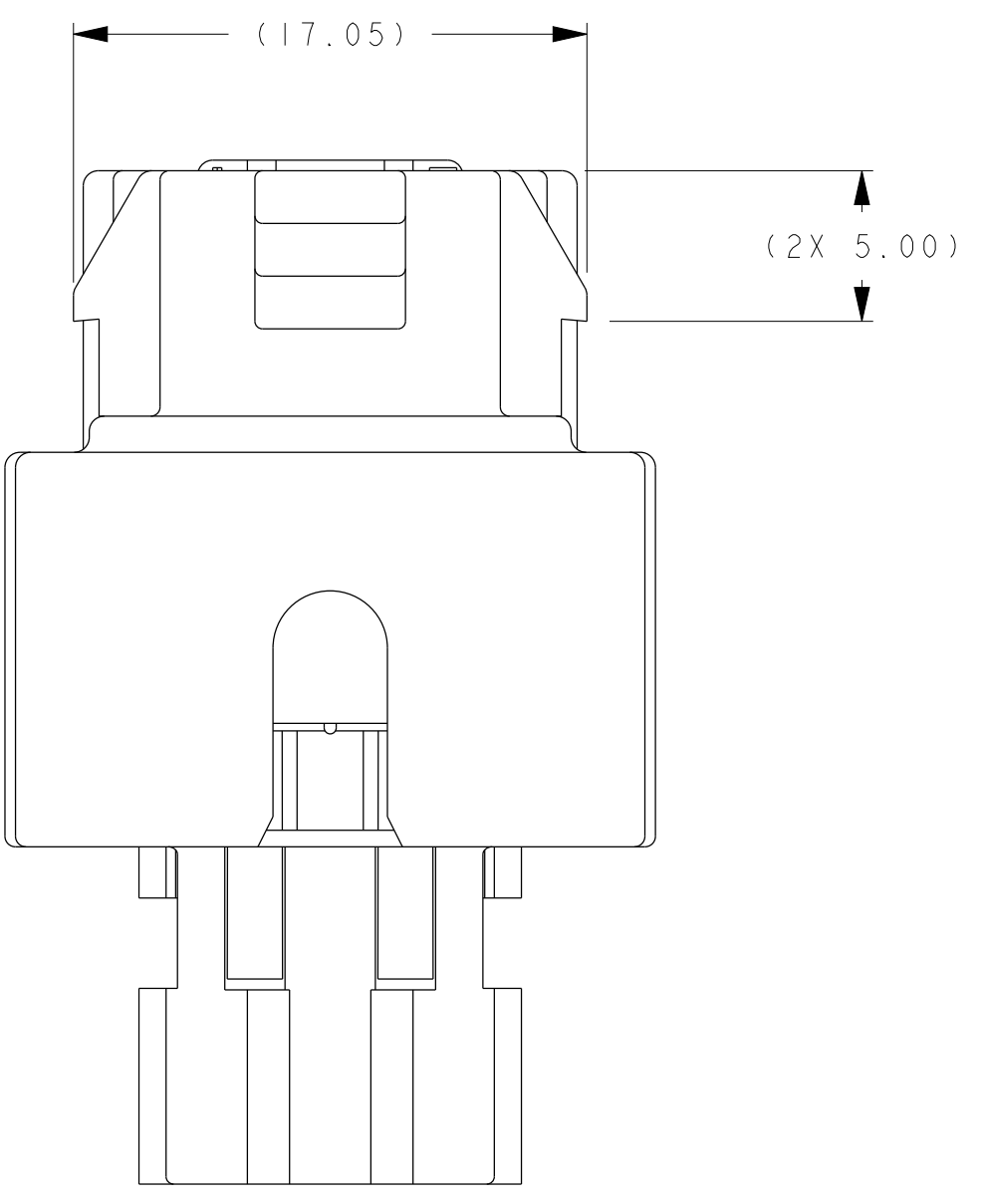
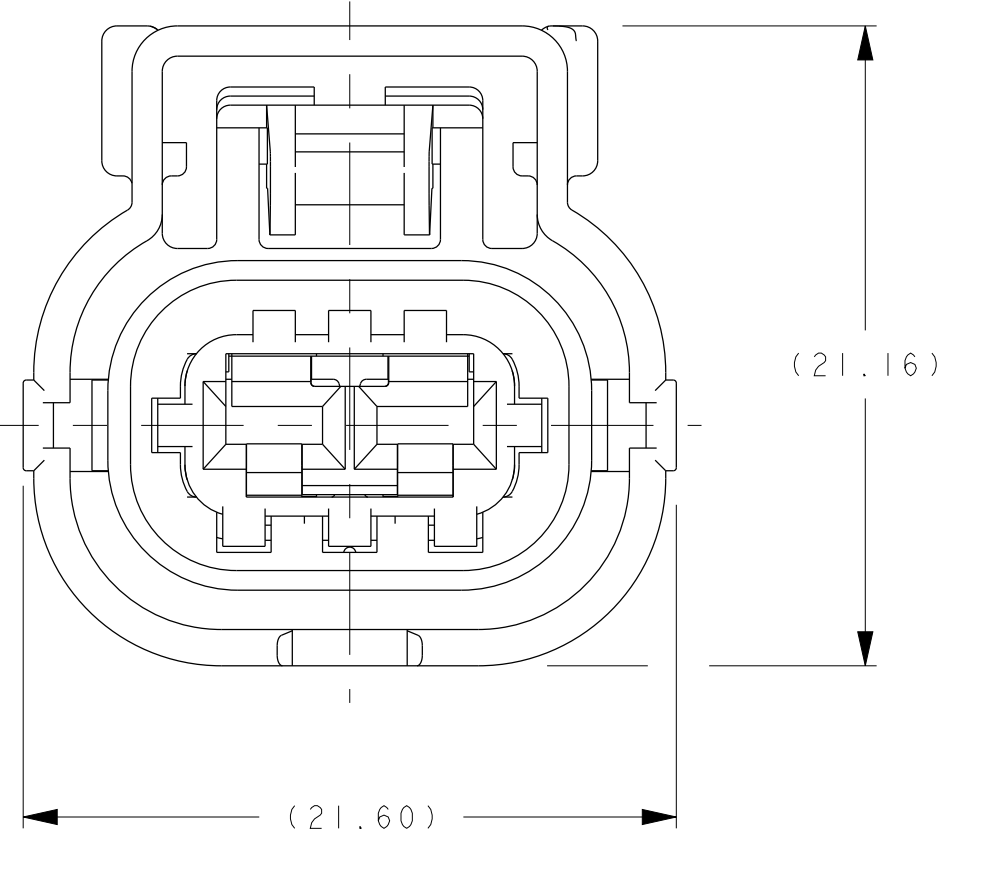
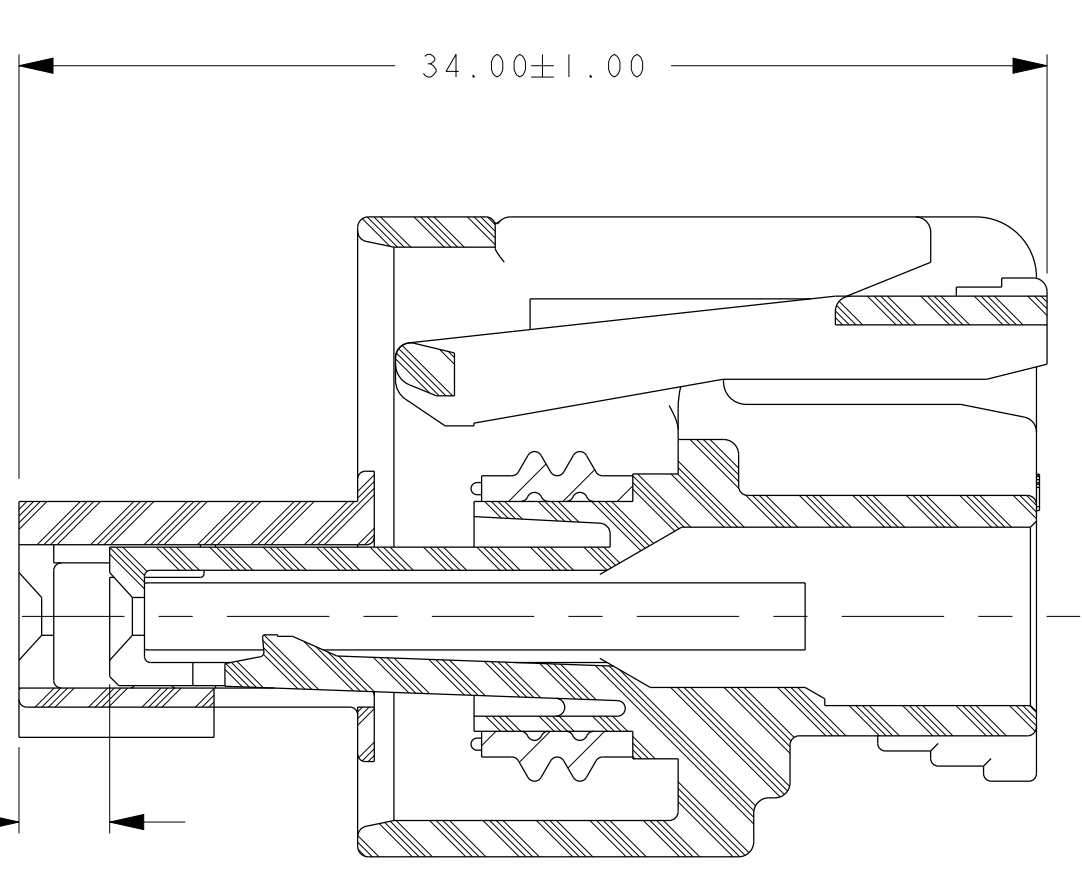
APPLICABLE COMPONENTS CHART										
ITEM NO.	DESCRIPTION	PLATING OR COLOR	SUPPLIER		DELPHI NUMBER	GRIP CODE	WIRE SIZE	WIRE INSULATION DIAMETER RANGE	MATERIAL/SPEC NO.	
			NAME	NUMBER						
5	2.8mm SEALED SYSTEM TERMINAL (F)	TIN	MVL	54001807	10810375	18	20-18 AWG 0.50-1.00mm ²	1.40mm-2.13mm	COPPER ALLOY / NA	
	2.8mm SEALED SYSTEM TERMINAL (F)	TIN	MVL	54001404	13627267	14	16-14 AWG 1.50-2.50mm ²	2.18mm-3.00mm	COPPER ALLOY / NA	
	2.8mm SEALED SYSTEM TERMINAL (F)	GOLD	MVL	54001811	13948955	18AU	20-18 AWG 0.50-1.00mm ²	1.40mm-2.13mm	COPPER ALLOY / NA	
	2.8mm SEALED SYSTEM TERMINAL (F)	GOLD	MVL	54001410	15470590	14AU	16-14 AWG 1.50-2.50mm ²	2.18mm-3.00mm	COPPER ALLOY / NA	
6	2.80mm SYSTEM CABLE SEAL ROUND	GREEN	MVL (OSR)	F676000	13791654		20-18 AWG 0.50-1.00mm ²	1.40mm-2.13mm	SILICONE	
	2.80mm SYSTEM CABLE SEAL ROUND	BLUE	MVL (OSR)	F576000	13948585		16-14 AWG 1.50-2.00mm ²	2.18mm-2.80mm	SILICONE	
	2.80mm SYSTEM CABLE SEAL ROUND	YELLOW	MVL	60994034	10779161		2.5mm ²	2.70mm-3.00mm	SILICONE	
7	2.80mm SYSTEM CAVITY PLUG ROUND	WHITE	DELPHI	-	15305170		OPTIONAL AS REQUIRED		SILICONE	



OPTIONAL: ASSEMBLY NUMBER, DATE CODE AND MACHINE NUMBER THIS LOCATION-SEE NOTES



SCALE 2:000

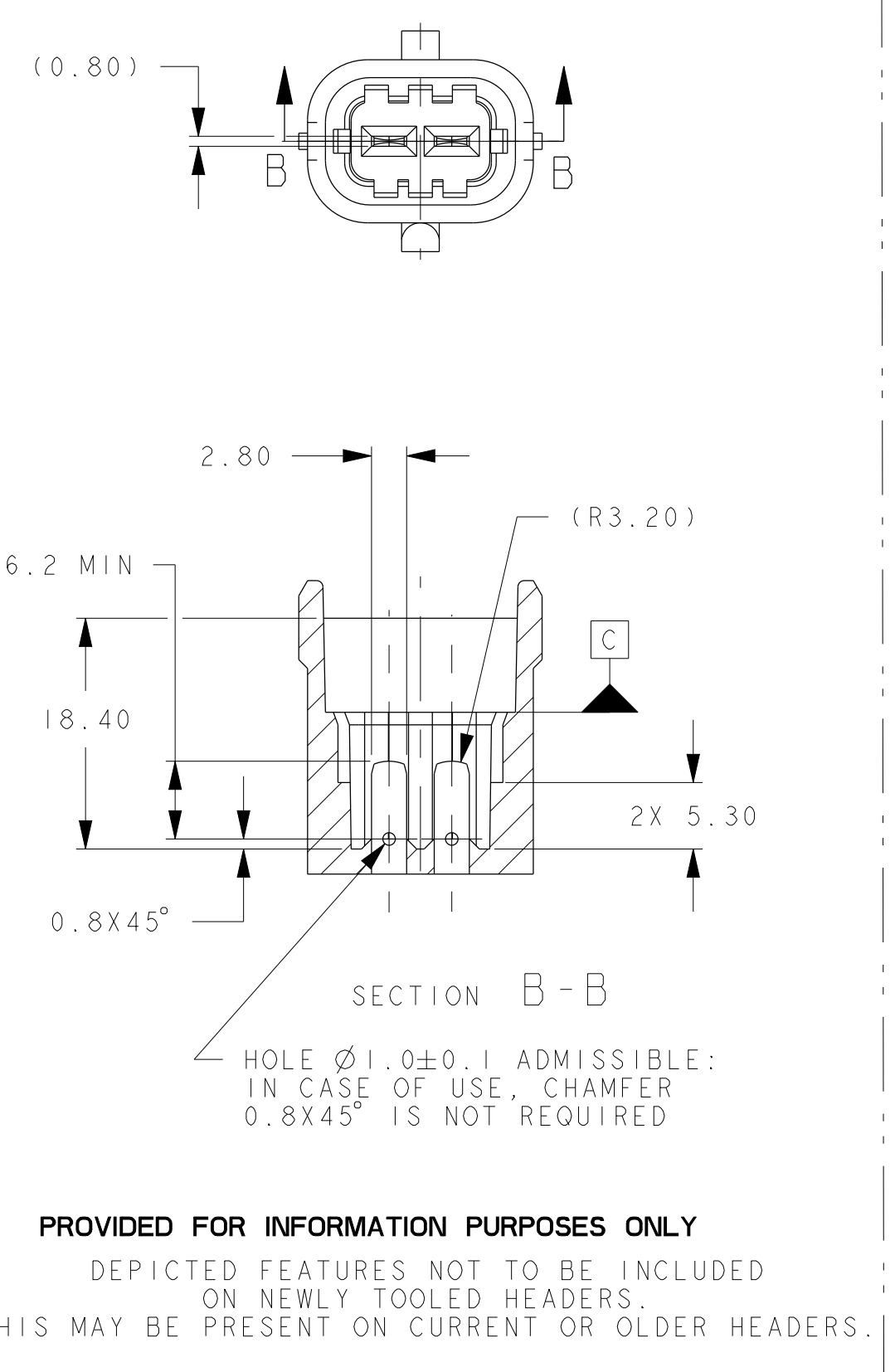


NOTES:

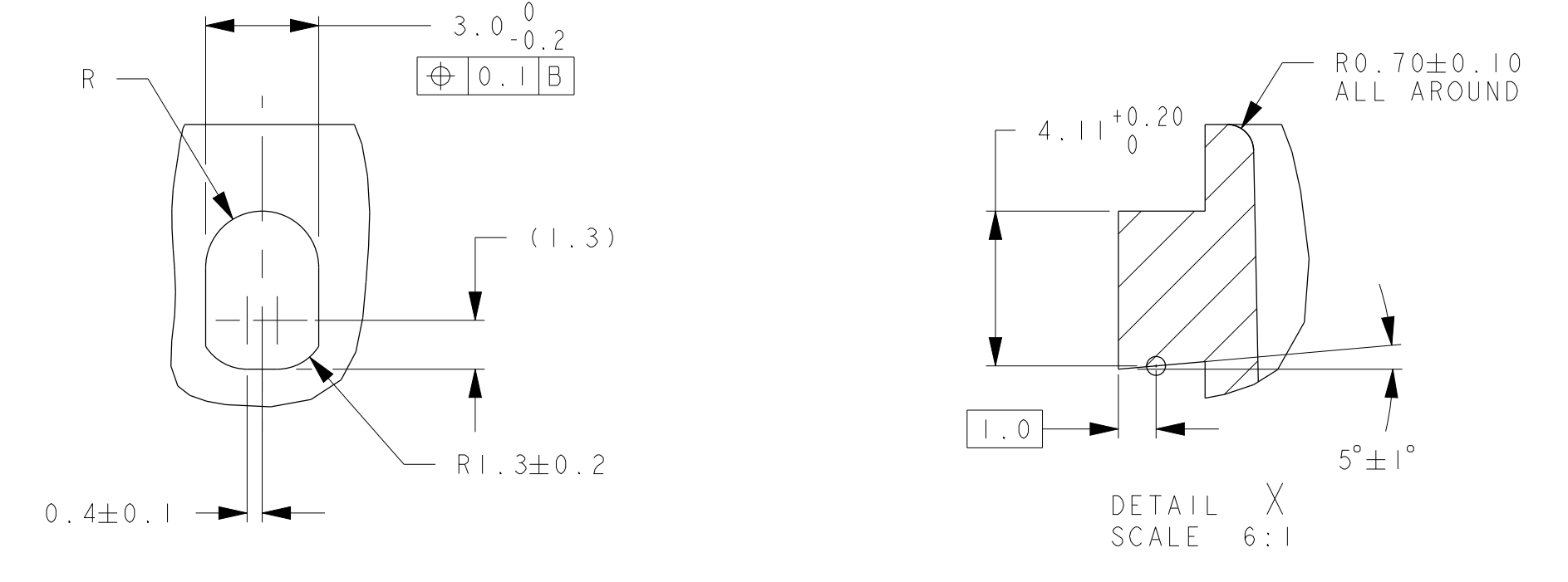
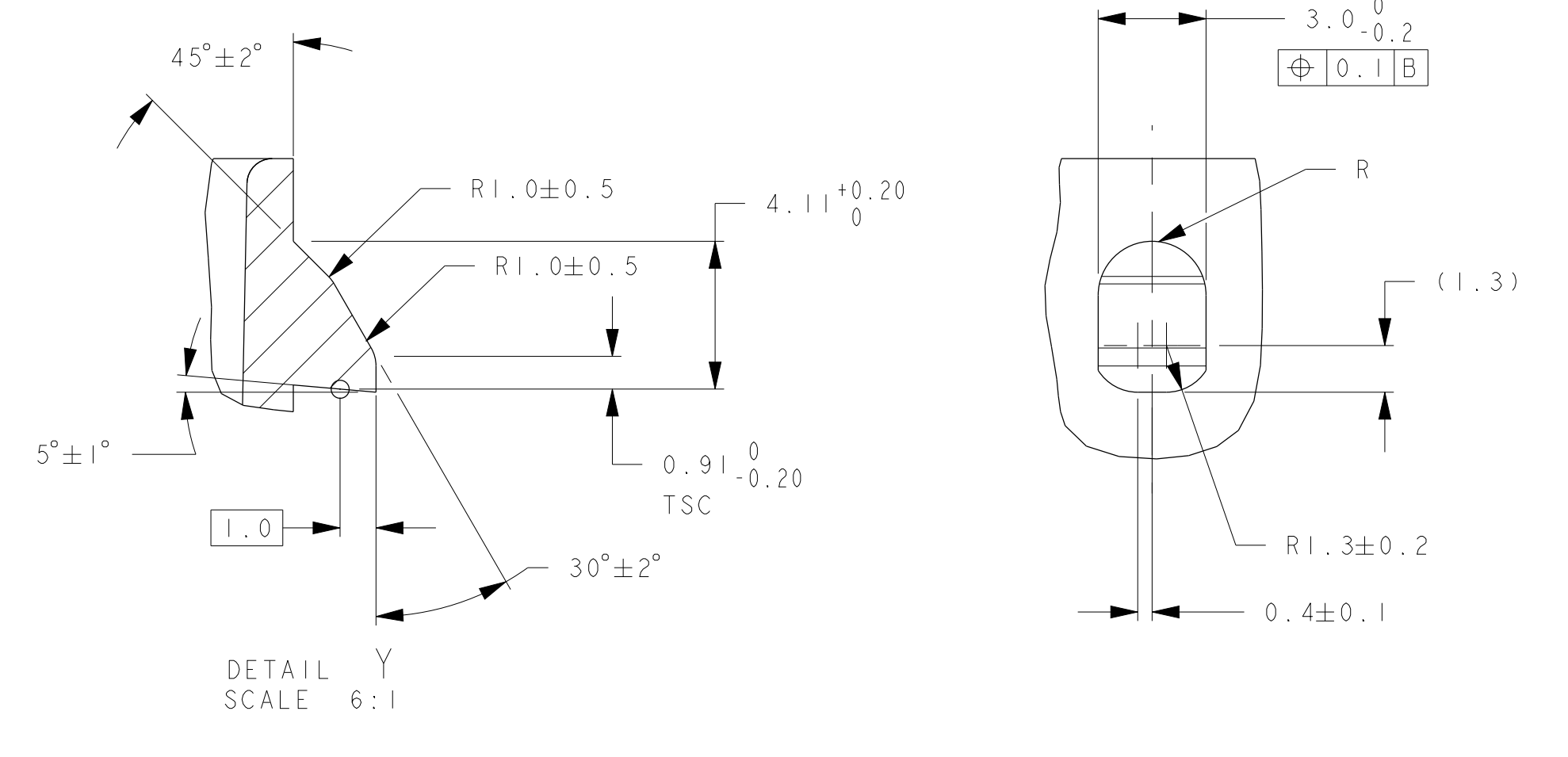
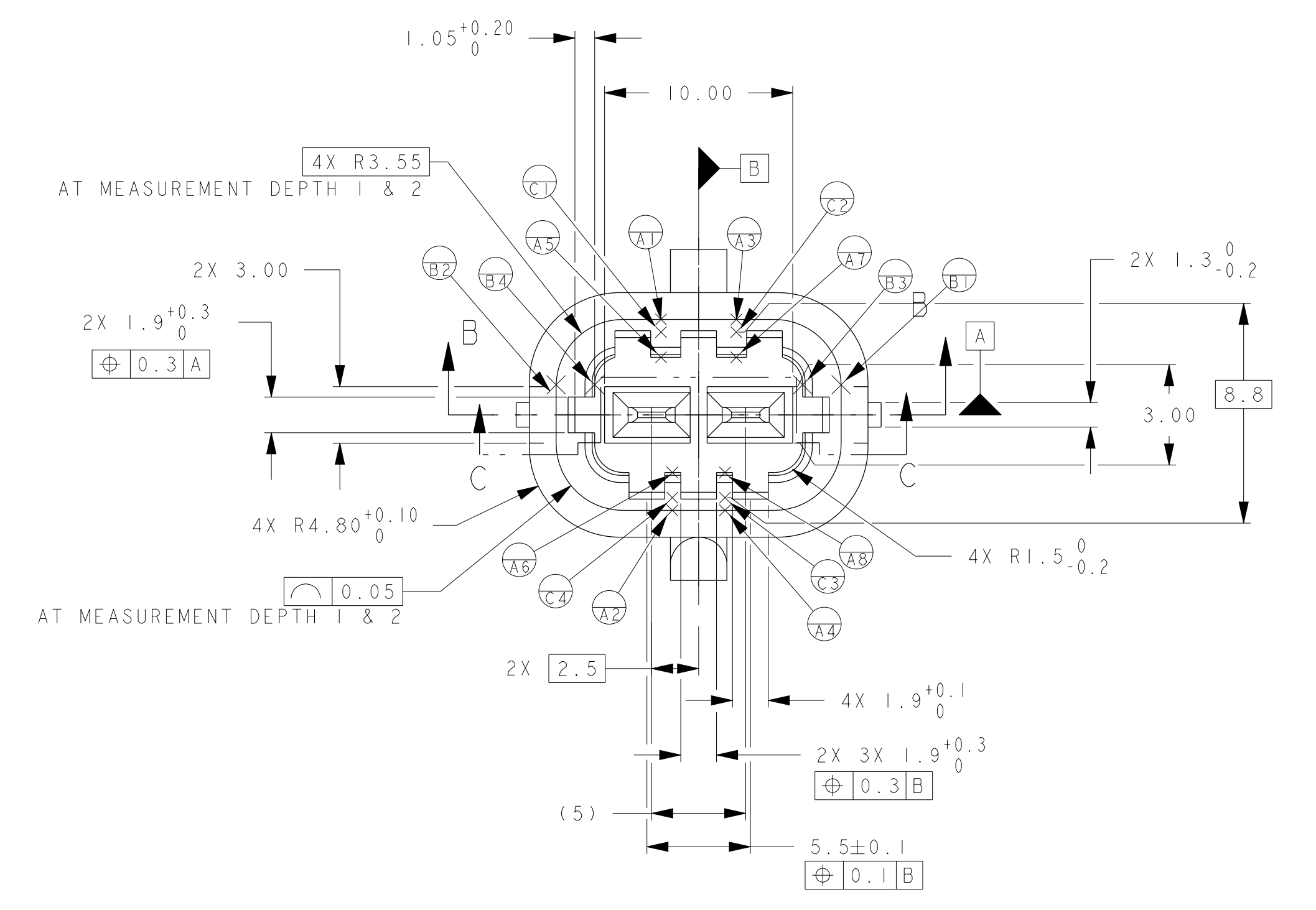
- VALIDATED TO SAE/USCAR-2 REV 5
 - VALIDATED TO THE FOLLOWING TEMP, VIBRATION, AND SEALING CLASSES:
 - SAE/USCAR-2 V3 T3 (125°C) WITH GOLD TERMINALS
 - SAE/USCAR-2 SEALING S3 T3 (125°C) (ISO16750 9K EQUIVALENT)
 - CONNECTOR MAY BE USED WITH THE FOLLOWING TERMINALS:
 - DELPHI APEX 2.8 TERMINALS LISTED IN THE APPLICABLE COMPONENTS CHART ON THIS DRAWING WITH WIRE SIZES DEFINED IN NOTE 4.
 - SEE DELPHI DRAWING C15004-CUST FOR SPECIFIC TERMINAL DETAILS AND CRIMPING REQUIREMENTS
 - PLATING OF TERMINALS AND MATING DEVICE BLADES MUST BE COMPATIBLE - SEE NOTE 5.
 - EXCESSIVELY THICK TIN PLATING ON DEVICE BLADES IS NOT RECOMMENDED
 - CONNECTOR SYSTEM VALIDATED TO USCAR-2 REQUIREMENTS WITH THE FOLLOWING RANGE OF WIRE SIZES AND TYPES IN CONJUNCTION WITH APPROPRIATE COMPONENTS FOUND IN THE "APPLICABLE COMPONENTS" CHART:
 - AWG - WIRE SIZES: 20AWG - 14AWG
 - INSULATION DIAMETER: 1.70mm MIN - 2.77mm MAX
 - WIRE TYPE: MIL-123-A, MS-8288 OR EQUIVALENT (STRUCTURE AND PROPERTIES ACCORDING TO SAE J1128)
 - METRIC - WIRE SIZE: 0.50mm² - 2.50mm²
 - INSULATION DIAMETER: 1.40mm MIN - 3.00mm MAX
 - WIRE TYPE: FLR2X-A OR EQUIVALENT (STRUCTURE AND PROPERTIES ACCORDING TO ISO 6722)
- CONTACT DELPHI ENGINEERING REGARDING USE OF OTHER WIRE SIZES AND/OR TYPES
- WIRE AND INSULATION TYPE MUST BE APPROPRIATE FOR TEMPERATURE CLASS & APPLICATION ENVIRONMENT
- CONNECTOR IS MATE COMPATIBLE WITH DEVICES CONFORMING WITH THE FOLLOWING INTERFACE SPECIFICATIONS:
 - BOSCH DWG 1928S00000 VARIANT A
 - GM DWG 13115604
- FOR CONSTRUCTION OF NEW DEVICES, SEE SHEET 2 FOR INTERFACE DETAILS.
- NOTE: EXCESSIVELY THICK TIN PLATING ON DEVICE BLADES IS NOT RECOMMENDED. SEE EWCAP-001 (280-7001) BLADE SPECIFICATION FOR PREFERRED PLATING
- DEVICE SUPPLIERS RESPONSIBLE FOR VALIDATING PERFORMANCE OF DEVICE TO SAE/USCAR-2 REV 5
- ANNUAL QUALITY REQUIREMENTS:
 - IT IS PERMISSIBLE TO PERFORM CONTINUOUS CONFORMANCE PER DELPHI SPECIFICATION #AQA-001 INSTEAD OF ANNUAL LAYOUT AND ANNUAL PV REQUIREMENTS OF ISO TS16949 AND SAE/USCAR-2 REV 5. FOR TERMINAL TO CONNECTOR AND TPA TO CONNECTOR ONLY.
 - SOURCE ID, MOLD & CAVITY ID SIGNIFIES TOOL OWNERSHIP. FOR REFERENCE
 - (K) INDICATES IN-PROCESS INSPECTION FOR MANUFACTURING DIMENSIONS OR SPECIFICATIONS.

EN-14-0394 PN CHART TPA ROYAL BLUE WAS DK BLUE. ADD DELPHI COMPONENT PART NUMBERS	ECO 423850 - UPDATE VIEWS FOR DESIGN IMPROVEMENT TO CPA F752210. DELPHI P/N'S ADDED FOR W/P P/N'S. REVISED NOTE 5. REMOVE PART NUMBERS 54001432, 54001448, 54001840 AND 54001819. ADD SHEET 2 WITH INTERFACE DETAILS.
EN-12-0118 AP CHART ADD 0.5mm ² WIRE. REVISE WIRE SIZE COLUMN. REVISE INSUL. O.D. COLUMN	NOTES REVISE NOTE 4 WITH 0.5mm ² WIRE INFO
1200130 AP CHART CORRECTED WIRE INSULATION DIA RANGE FOR F576000; 2.18mm-2.80mm was 2.18mm-2.77mm	NEW RELEASE - RELEASED AT REV B
EN-NO. ZONE	CHANGE DESCRIPTION
PROJECT SPEC	PACKING SPEC
APPROVAL DATE	APPROVAL DATE
DESIGNED BY	DESIGNED BY
CHECKED BY	CHECKED BY
DATE	DATE
PROJECT	PROJECT
STATE	STATE
PART NUMBER	PART NUMBER
REV	REV
SCALE	SCALE

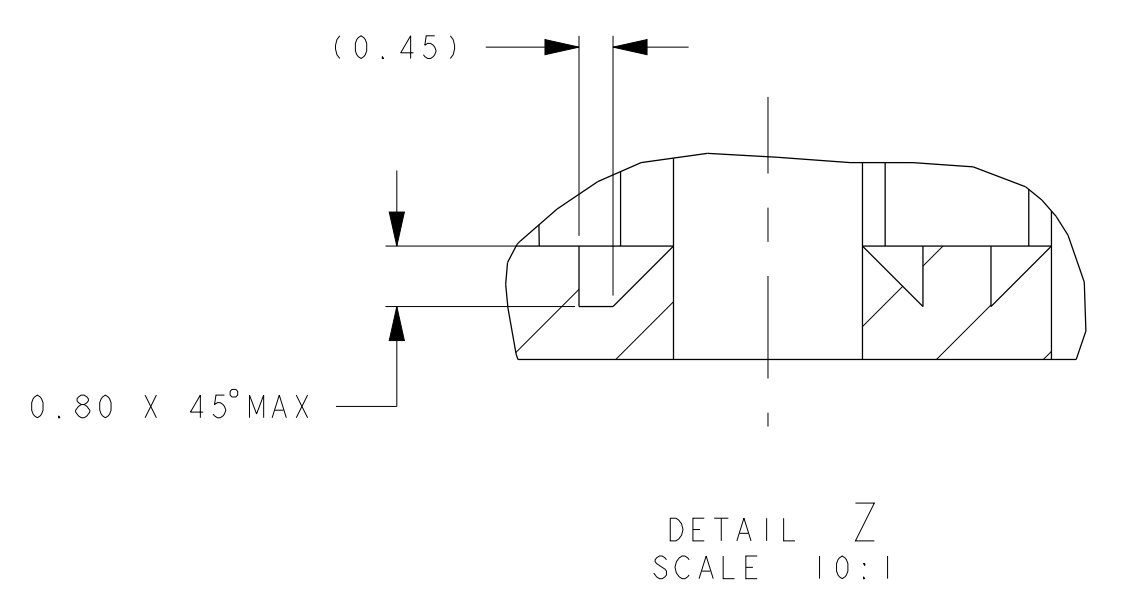
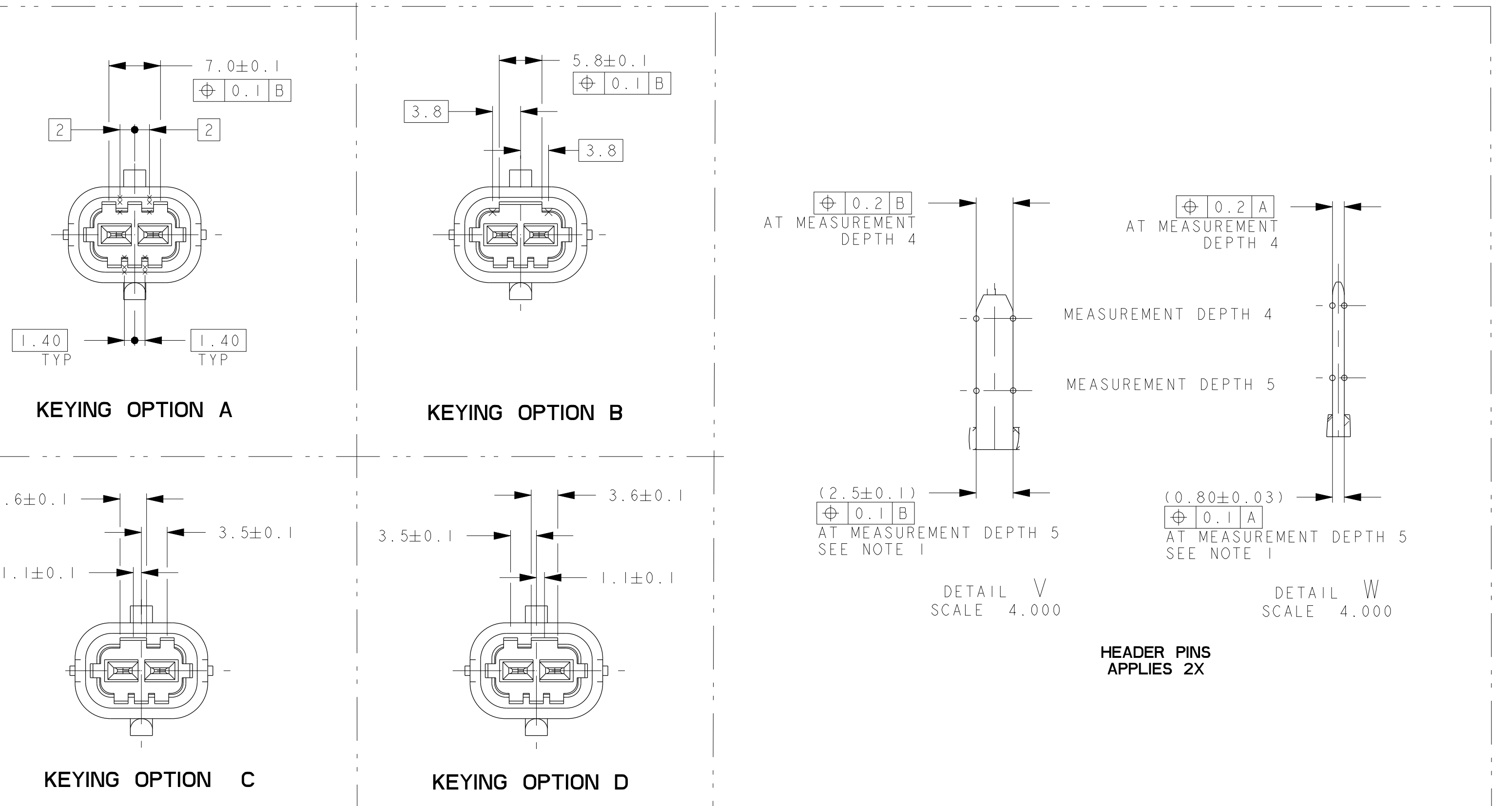
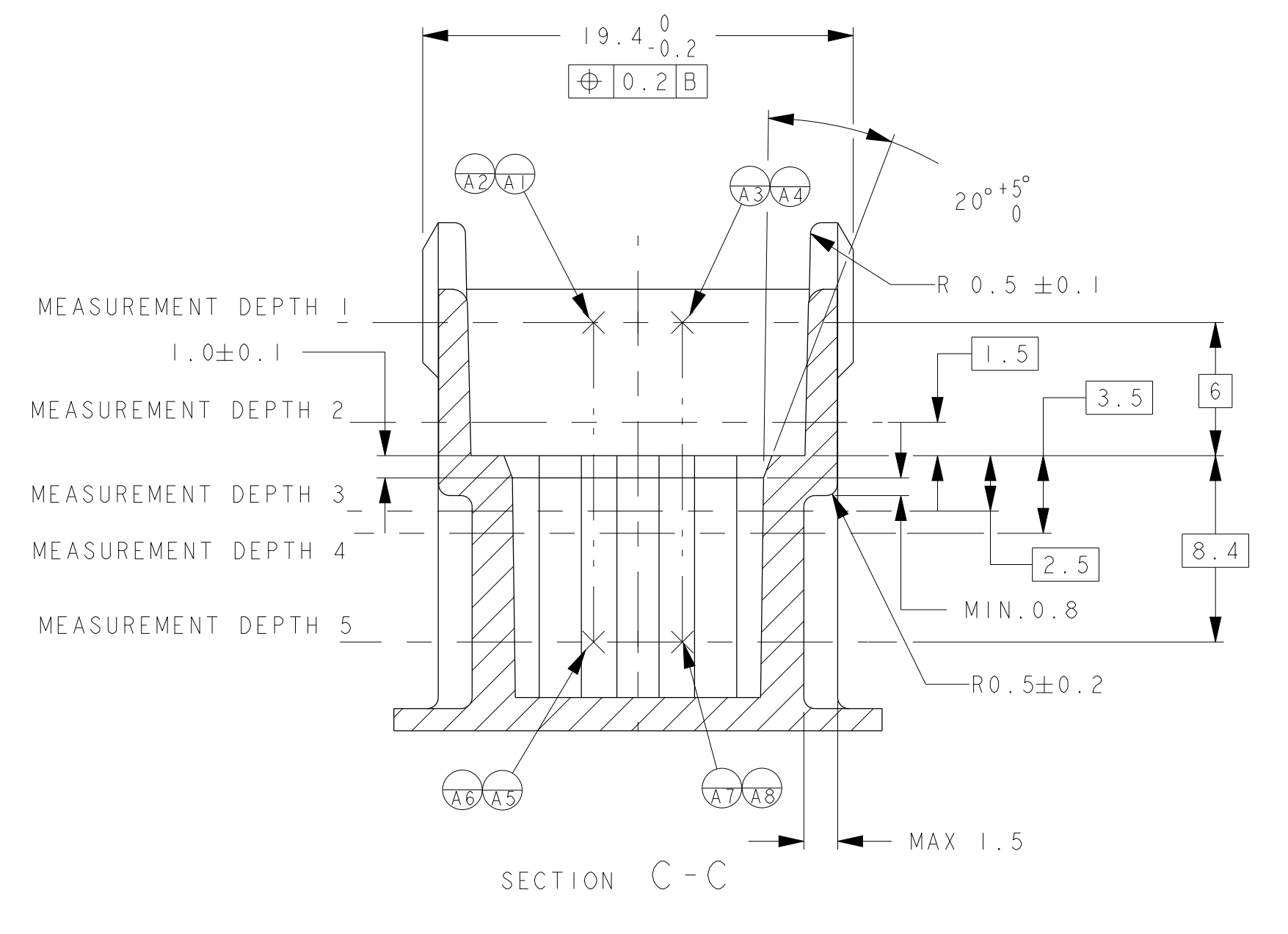
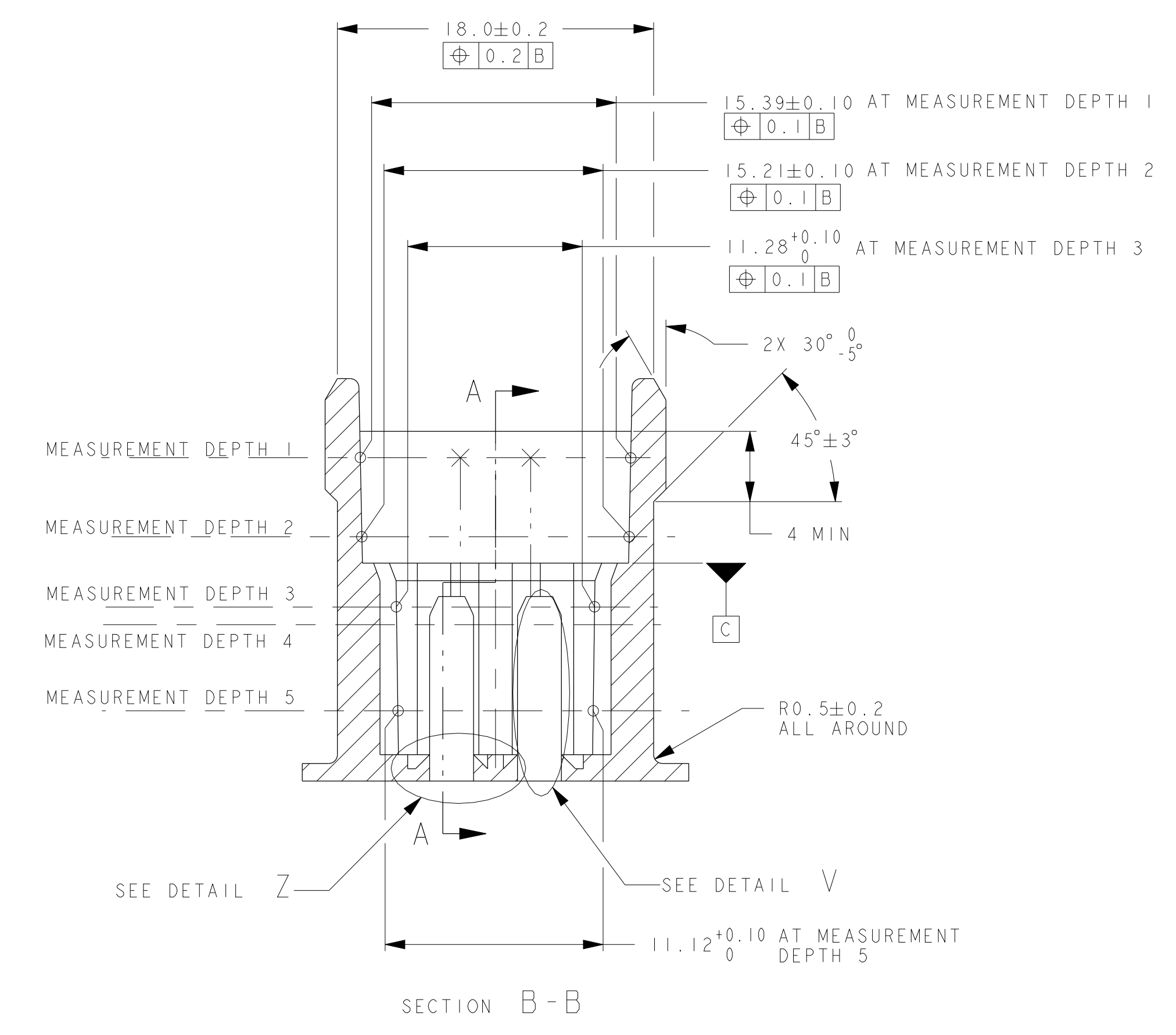
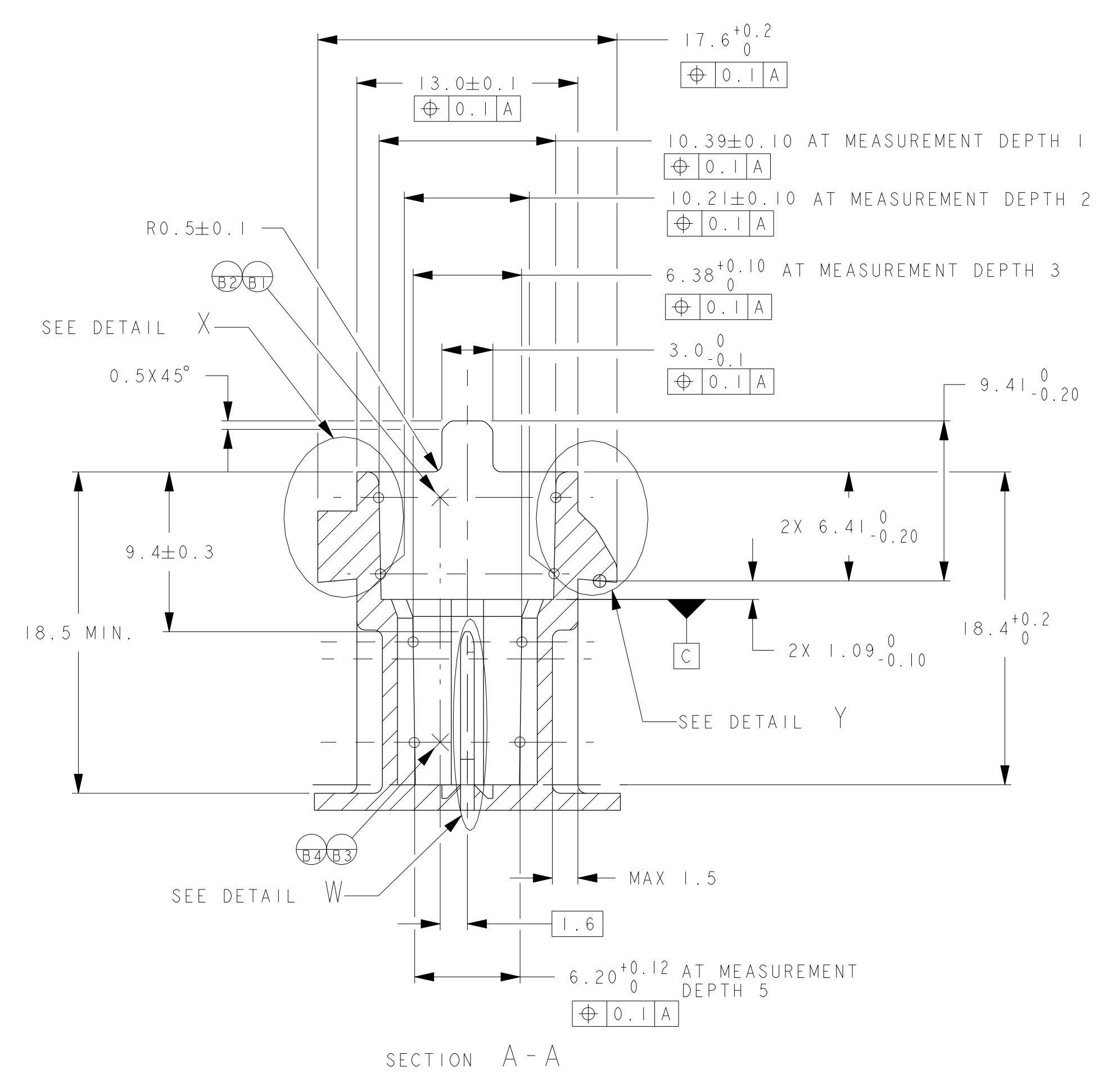
DELPHI
PCC0605490
SERIAL RELEASED
See Table



PROVIDED FOR INFORMATION PURPOSES ONLY
DEPICTED FEATURES NOT TO BE INCLUDED
ON NEWLY TOOLED HEADERS.
THIS MAY BE PRESENT ON CURRENT OR OLDER HEADERS.



LATCH CONSTRUCTION



INTERFACE NOTES (REF):
1. FOR HEADER BLADE INFORMATION SEE EWCAP DRAWING EWCAP-001.

REV	DATE	BY	CHKD	DESCRIPTION
1				ISSUED FOR MANUFACTURE
2				REVISION
3				REVISION
4				REVISION

PROJECT SPEC	PACKAGING SPEC	APPLICATION SPEC	COPYRIGHT	DELPHI CORPORATION AND/OR ITS AFFILIATES. ALL RIGHTS RESERVED. REVISED THIS DRAWING IS THE PROPERTY OF DELPHI CORPORATION AND CONTAINS DELPHI CONFIDENTIAL INFORMATION. THE INFORMATION CONTAINED HEREIN IS UNCLASSIFIED AND AVAILABLE TO THE PUBLIC WITHOUT RESTRICTIONS. ANY REPRODUCTION OR TRANSMISSION OF THIS INFORMATION IS PROHIBITED WITHOUT THE WRITTEN PERMISSION OF DELPHI CORPORATION.
REVISED BY	DATE	BY	CHKD	DESCRIPTION
1				ISSUED FOR MANUFACTURE
2				REVISION
3				REVISION
4				REVISION

REV	DATE	BY	CHKD	DESCRIPTION
1				ISSUED FOR MANUFACTURE
2				REVISION
3				REVISION
4				REVISION