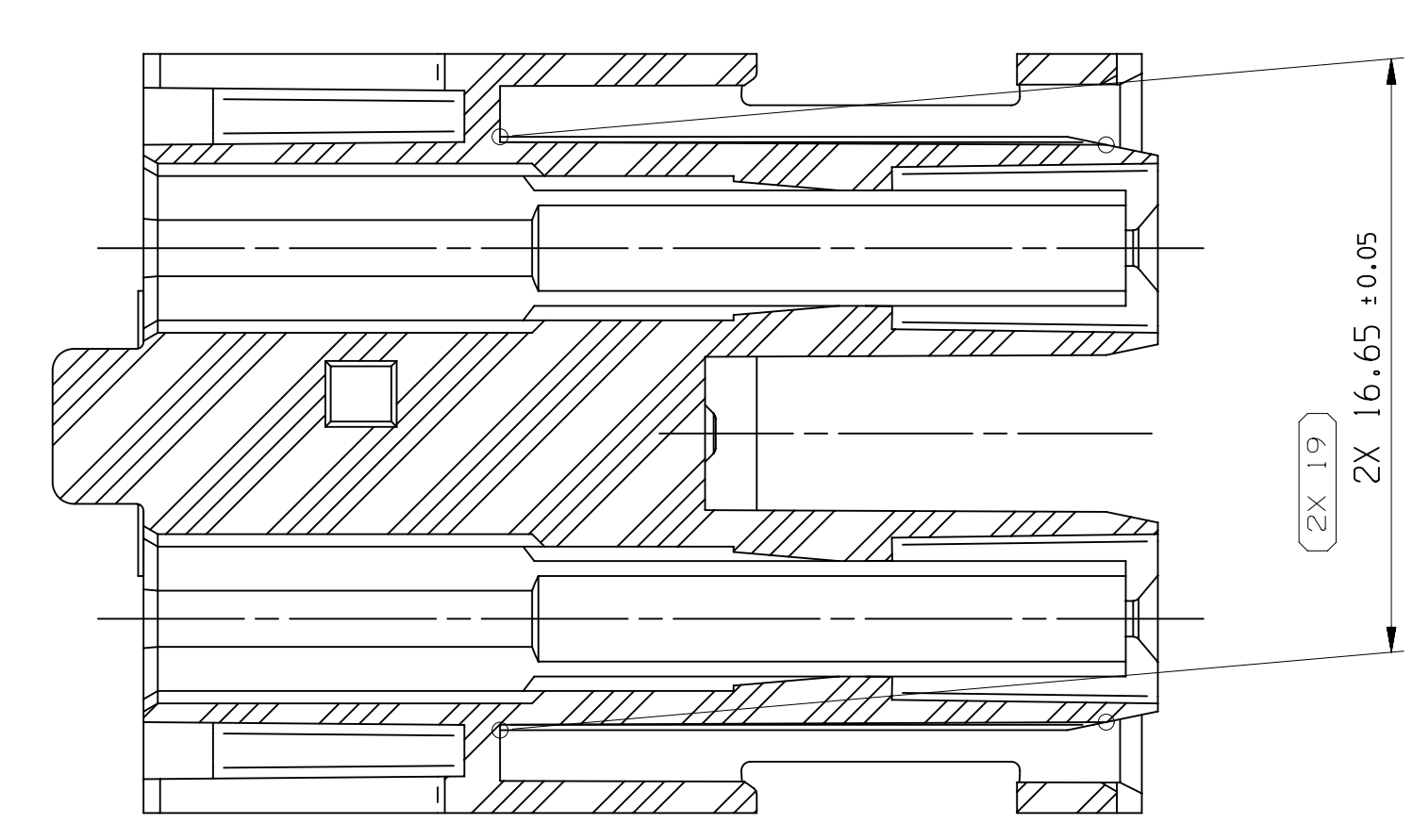
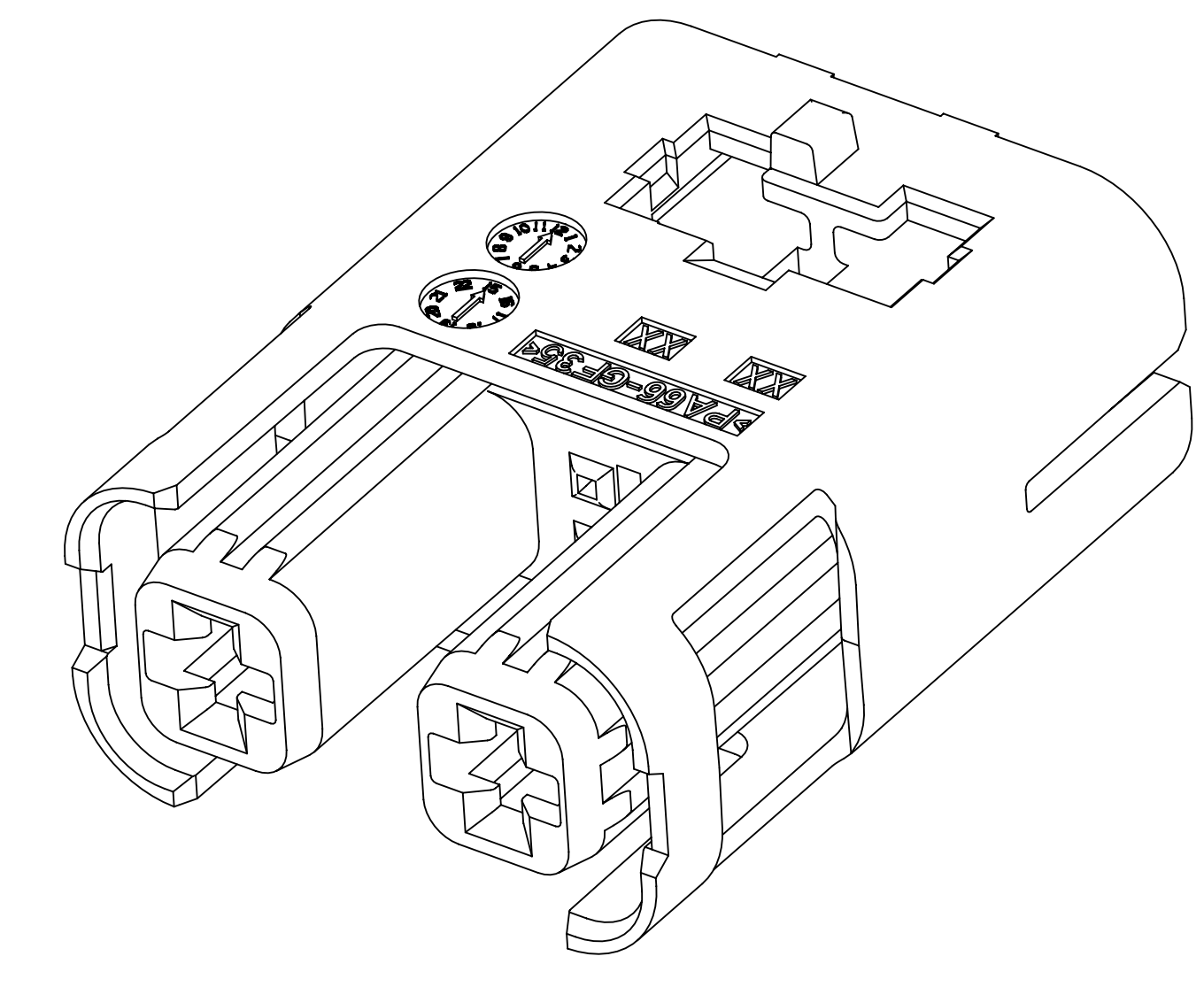
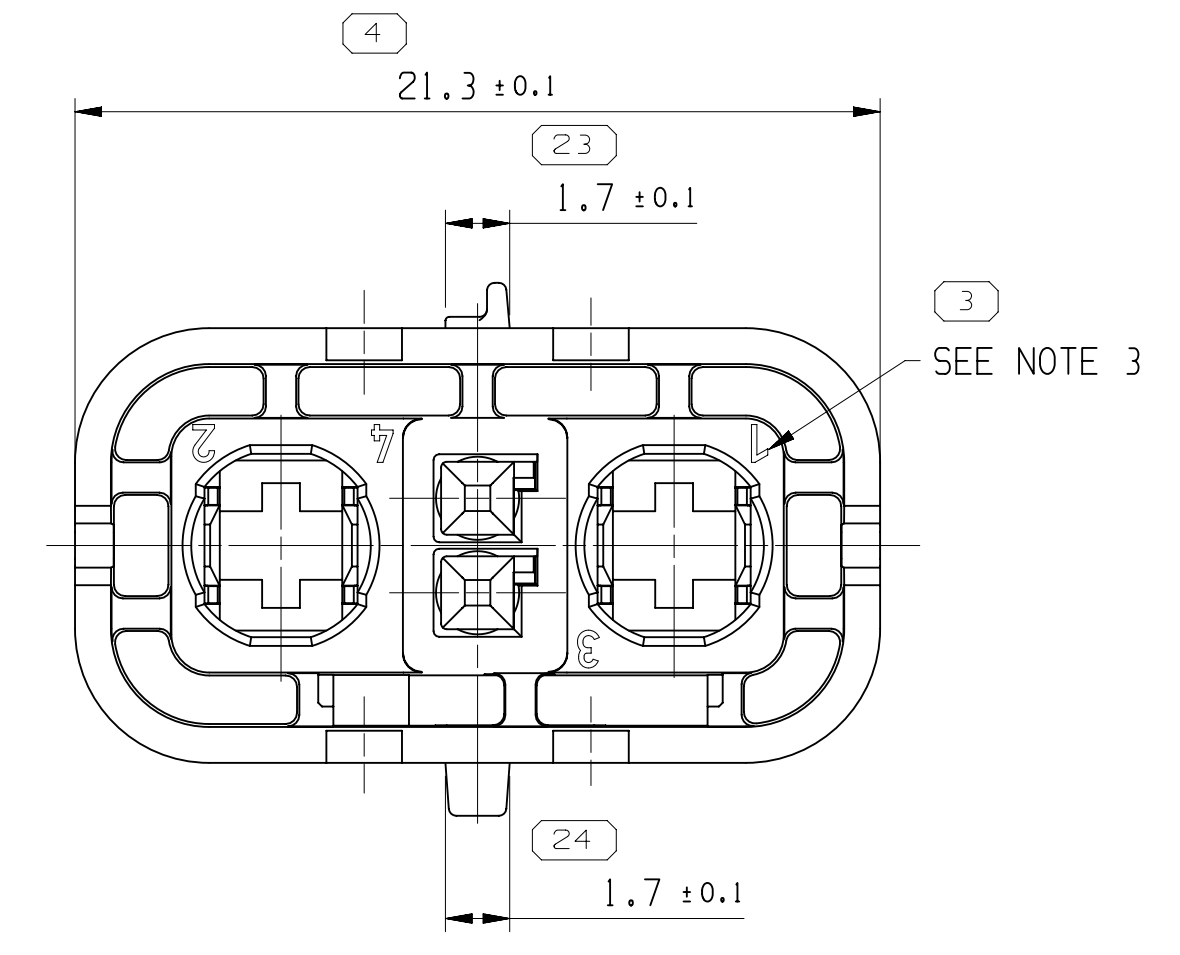
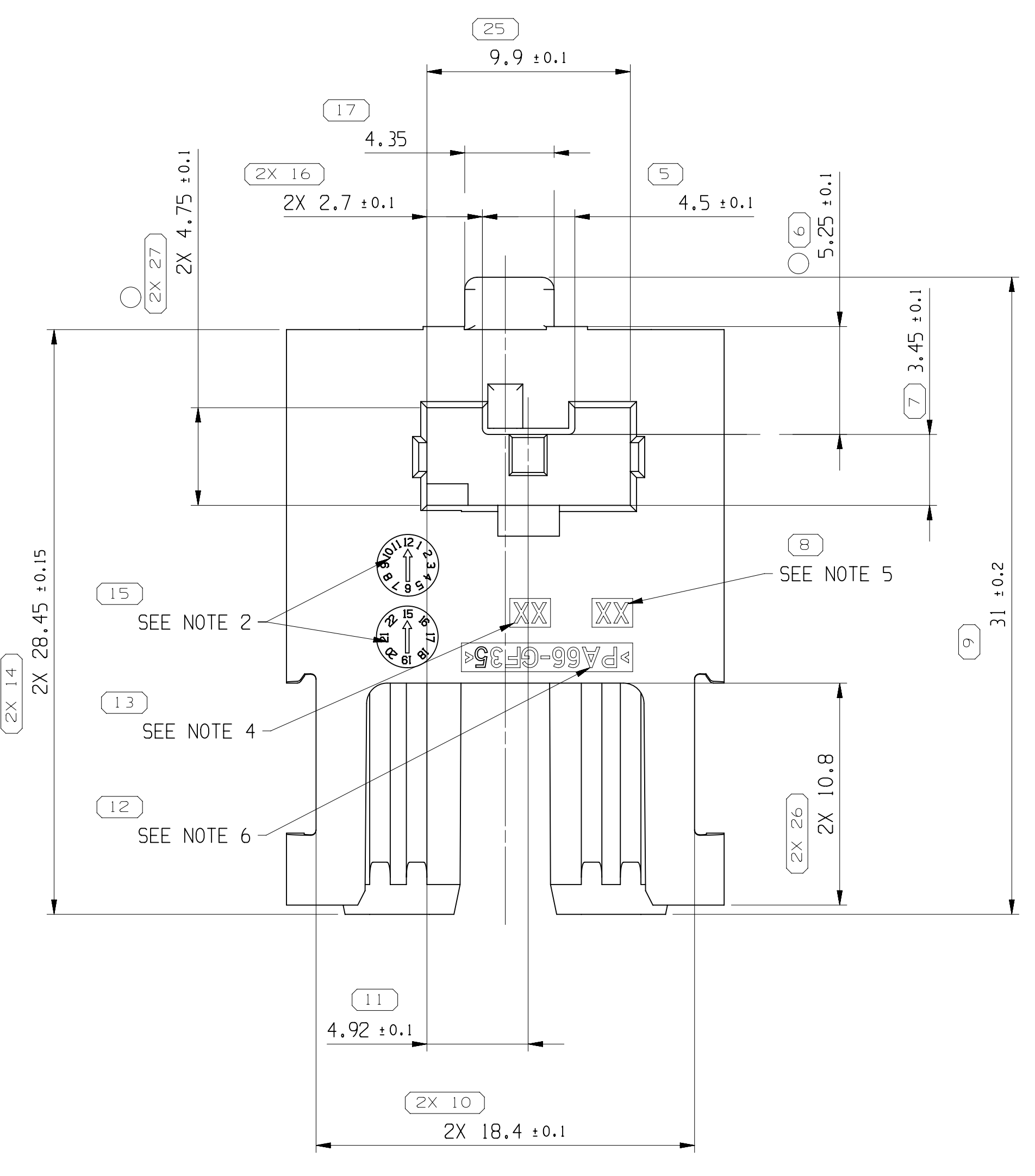


SYMBOL DEFINITION		TOTAL NO OF INSPECTIONS REQUIRED	44
A DIMENSION WITHOUT AN INSPECTION REPORT SYMBOL DOES NOT REQUIRE INSPECTION. IT MAY BE CONTROLLED ON THE INDIVIDUAL COMPONENT DRAWING.		LAST NO. USED	34

DWG STATUS				REVISION HISTORY				AUTH		DR		APVD	
DATE	STG	REV	N/P	CHG	ZONE	DESCRIPTION	DATE	BY	DATE	BY	DATE	BY	
22JA18	R	01	-	-		CREATED PART DRAWING	438642	HWH	WJ	TY			
20FE19	R	01	AA	-		UPDATED PDM ATTRIBUTES	442615	YLX	TY	TY			
21FE19	R	01	AB	-		UPDATED PDM ATTRIBUTES	442705	YLX	TY	TY			

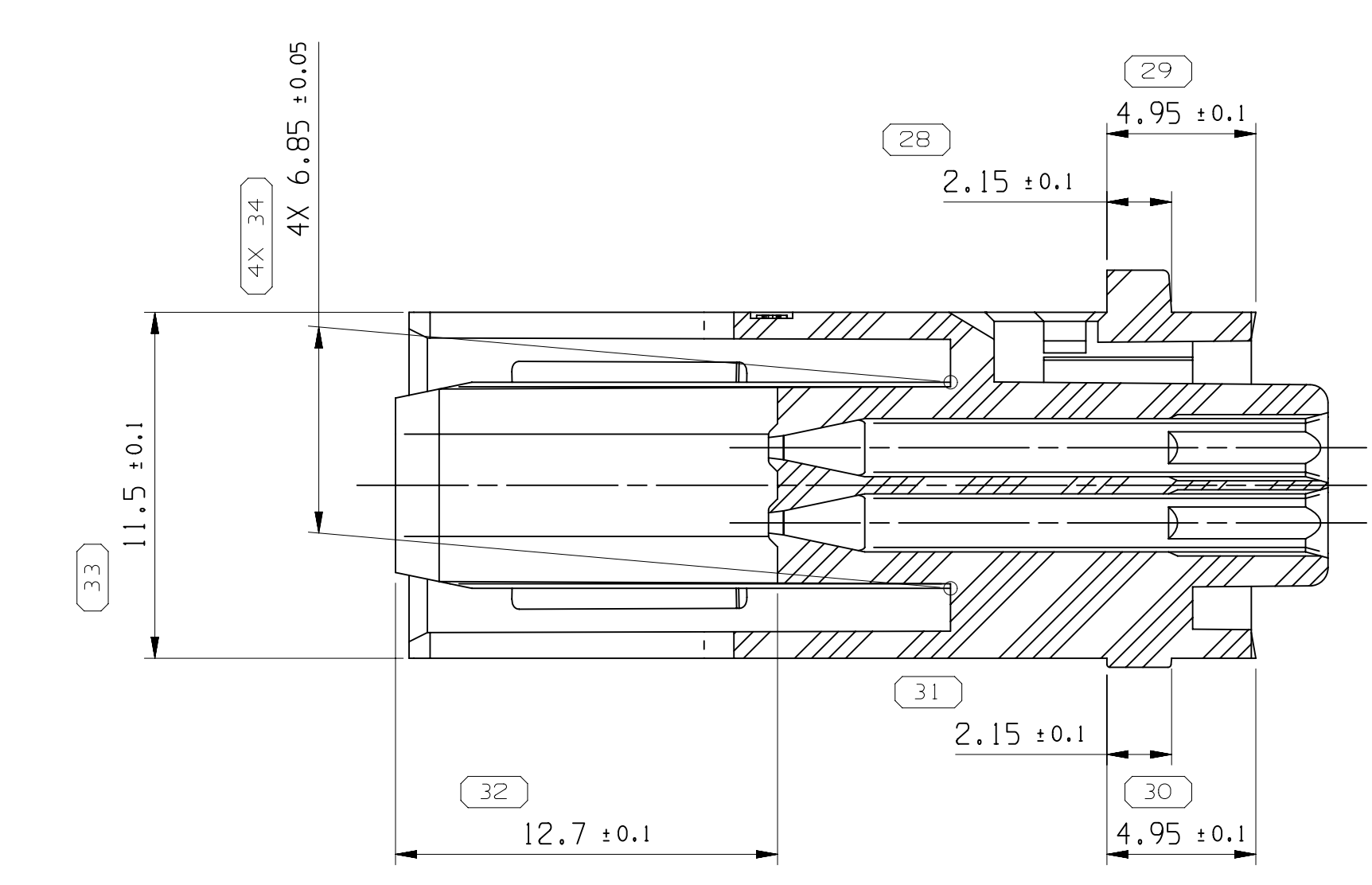
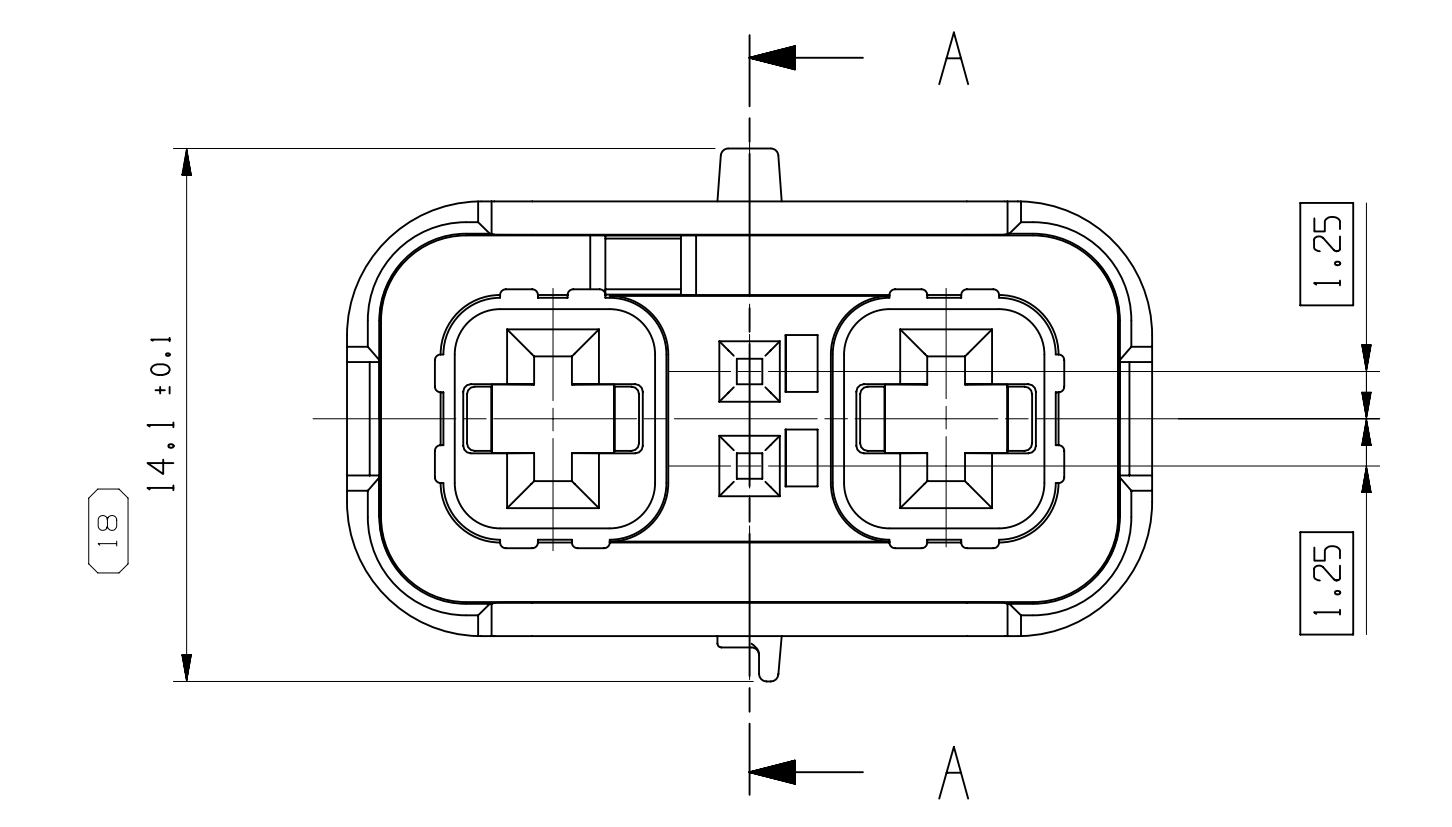
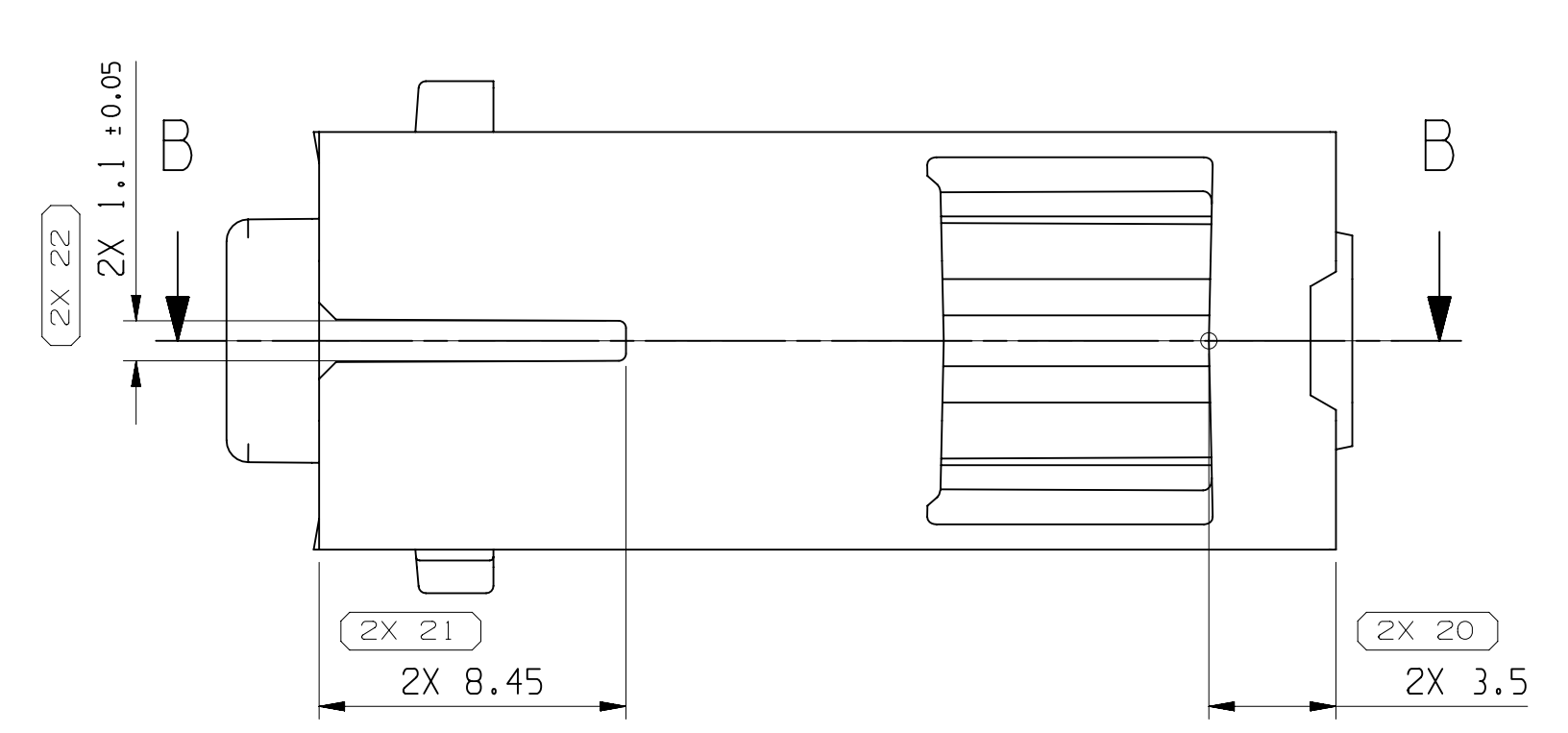


SECTION B-B



NOTES:

- UNLESS OTHERWISE SPECIFIED AND/OR INDICATED: DIMENSIONS ARE TO FACE OF VIEW SHOWN AND AUTOMATICALLY ROUNDED BY COMPUTER FOR INSPECTION (SEE MATH MODEL FOR PRECISE DIMENSIONS). FOR ALL OTHER DIMENSIONS NOT SHOWN BUT REQUIRED FOR TOOL BUILD, SEE MATH MODEL FOR PRECISE TOOL PATH DATA.
- YEAR AND MONTH INSERT SIMILAR FIRM HASCO Z 485/3/1; HAS TO BE THE MANUFACTURING DATE LETTERS 0.2 MM RAISED / SIGN PLANE 0.3 MM RECESSED
- PART CAVITY NUMBER / FORMAT ACCORDING TO DIN 1451; H=1.0 MM LETTERS 0.2 MM RECESSED
- TOOL CAVITY NUMBER / FORMAT ACCORDING TO DIN 1451; H=1.0 MM LETTERS 0.1 MM RAISED / SIGN PLANE 0.2 MM RECESSED
- INDEX REPLACEMENT INSERT / FORMAT ACCORDING TO DIN 1451; H=1.0 MM LETTERS 0.1 MM RAISED / SIGN PLANE 0.2 MM RECESSED
- MATERIAL NAME ACCORDING TO VDA 260 / FORMAT ACCORDING TO DIN 1451; H=1.0 MM LETTERS 0.1 MM RAISED / SIGN PLANE 0.2 MM RECESSED
- THIS PRODUCT IS NOT CATEGORIZED AS AN APPEARANCE ITEM, MINOR IMPERFECTIONS INCLUDING, BUT NOT LIMITED TO, FLOW MARKS, COLOR BLEMISHES, GATE VESTIGE, AND SOFT FLASH THAT DO NOT AFFECT THE FIT, FORM, OR FUNCTION OF THE PART ARE PERMISSIBLE PER EANP_4-3_CS_01_EN.
- NO REGRIND, EXCEPTION OF DELPHI ENGINEERING APPROVAL.
- THIS PART USED IN ASSEMBLY 3512237 TYPICALLY.



SECTION A-A

DIMENSION NUMBER	MINIMAL VALUE	MAXIMAL VALUE
27#	-	4.9
6#	-	5.4

DIMENSIONS OUT OF TOLERANCE RANGE BUT ACCEPTED FOR CHN TOOL 33372092-PM-A-COO1

•APTIV•

CONNECTION SYSTEMS

Anting, China

COPYRIGHT 2018 APTIV, ALL RIGHTS RESERVED.

THIS DRAWING IS THE PROPERTY OF APTIV AND CONTAINS APTIV CONFIDENTIAL INFORMATION. THE REPRODUCTION, DISTRIBUTION AND UTILIZATION OF THIS DOCUMENT OR ITS RELATED CAD DATA, AS WELL AS COMMUNICATION OF ANY CONTENT TO OTHERS, WITHOUT EXPRESS AUTHORIZATION, IS PROHIBITED.

DR	DATE
APVD1 HUIWEI HUANG	22JA18
APVD2 WEIGUO JIANG	22JA18
APVD3 TIMON YU	22JA18
APVD4	
APVD5	

SUBSTANCES OF CONCERN AND RECYCLED CONTENT PER APTIV 10949001

MATERIAL: SEE CHART

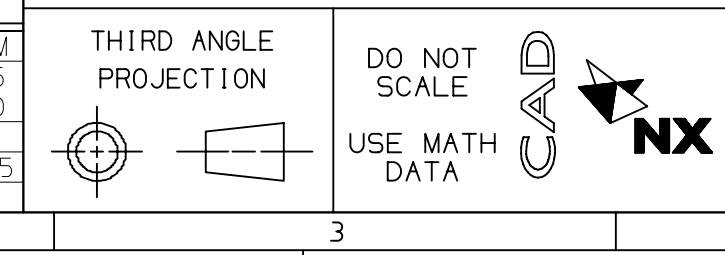
DRAWING NAME: TAXI MOUN HOUSING

DRAWING NUMBER: 33372091

SIZE: A0 SCALE: 5:1 FRAME NO: 1 OF 1 SHEET NO: 1 OF 1 REV: 01

35174511	01	-	INNER HOUSING WITH PASS THROUGH HVIL	POLYAMIDE BLEND, NAT	2.682
PART NO	REV	N/P	DESCRIPTION	MATERIAL AND COLOR	VOLUME (CM ³)

4	PROCESS SENSITIVE DIMENSION
DIMENSIONS ENCLOSED IN () INDICATE REFERENCE DIMENSING AND NO TOLERANCE LIMITS ARE ESTABLISHED	
DIMENSIONAL RANGE (MM)	CHART
FROM > 0	> 6
TO 6	> 30
	> 70
	> 120
	> 160
	> 200
	> 250
	> 315
	400
TOLERANCE (UNLESS OTHERWISE SPECIFIED)	
±0.1	±0.2
±0.2	±0.3
±0.4	±0.45
±0.55	±0.7
±0.85	±1.05
ANGULAR TOLERANCE ±1°	



User: Engineer Date: 2023/03/14 10:21:57 Draw: 14-Mon-19 Times: 12455157