

TYPE 1301

TYPE 1302

OPTIONAL CONSTRUCTION

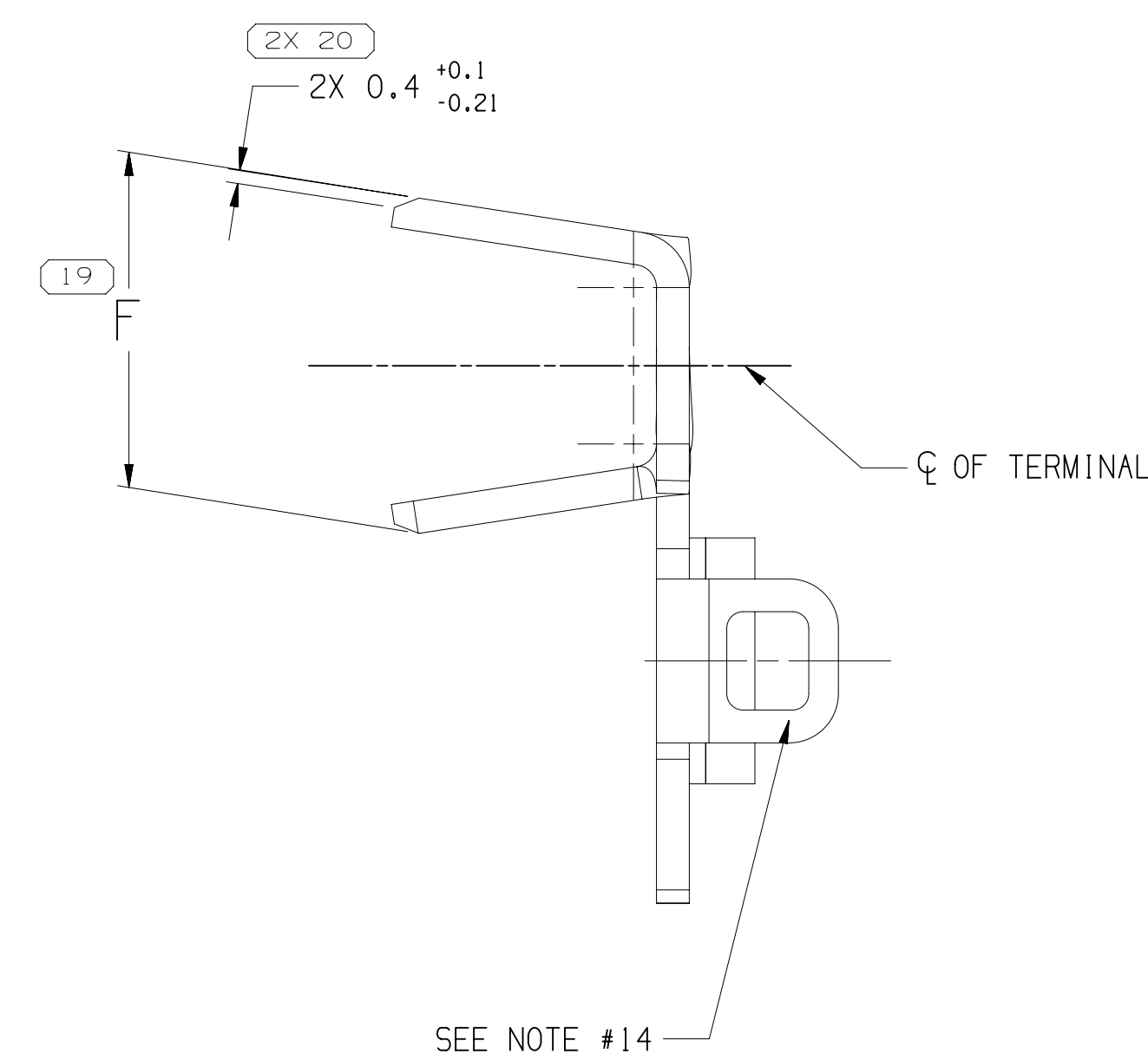
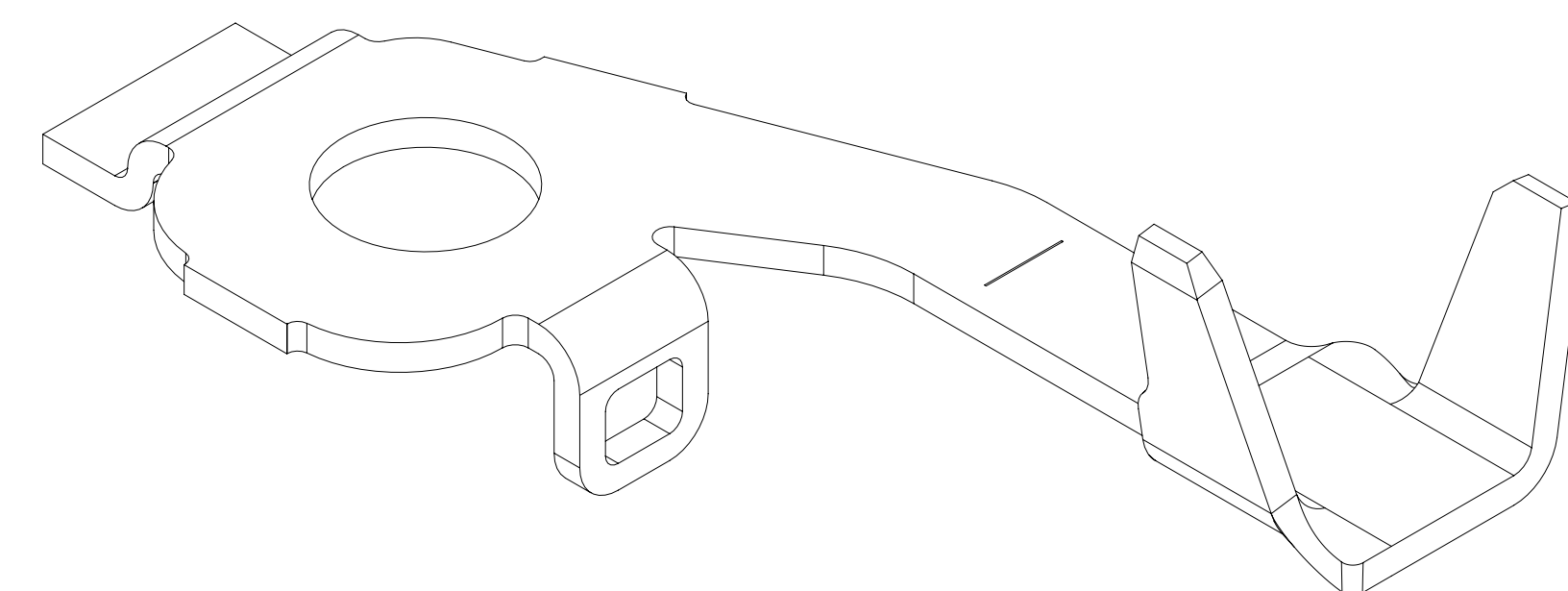
SEE NOTE #13


SCALE 3:1

TYPE 1302

SAME AS TYPE 1301
EXCEPT AS SHOWN

TYPE 1301



SYMBOL DEFINITION		
A DIMENSION WITHOUT AN INSPECTION REPORT SYMBOL  DOES NOT REQUIRE INSPECTION. IT MAY BE CONTROLLED ON THE INDIVIDUAL COMPONENT DRAWING.	TOTAL NO OF INSPECTIONS REQUIRED	23
	LAST NO. USED	22

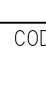
MISSING SYMBOLS		DWG STATUS				ZONE	REVISION HISTORY		AUTH	DR	APPROV	REVNO
NO MISSING SYMBOL NUMBER		DATE	STG	REV	N/P		CHG					
250C18	R	01	-	-		35240172-73 - RELEASED PART DRAWING		441115	AHG	AGH	LB	
22F619	R	02	-	-		ALL PARTS - ADDED DIM #22		424217	JGM	AGH	AGH	
19E220	R	03	-	-		35240173 - REVISED GRAPHICS; 35240172 - UPDATED PDM ATTRIBUTES		553082	JGM	JGM	AGH	
06F021	R	04	-	-		ALL PARTS - UPDATED PART AVAILABILITY		553580	AHY	AHY	AGH	
05MR21	R	05	-	-		ALL PARTS - UPDATED PDM ATTRIBUTES		553725	LVD	JAA	AGH	

NOTES

1. UNLESS OTHERWISE SPECIFIED AND/OR INDICATED:

1. DIMENSIONS ARE TO FACE OF VIEW SHOWN AND AUTOMATICALLY ROUNDED BY COMPUTER FOR INSPECTION (SEE MATH MODEL FOR PRECISE DIMENSIONS), FOR ALL OTHER DIMENSIONS NOT SHOWN BUT REQUIRED FOR TOOL BUILD, SEE MATH MODEL FOR PRECISE TOOL PATH DATA.
2. "PXX" INDICATES "P" PLUS LAST TWO DIGITS OF MAKE DIE SERIES NUMBER (P01, P02, P03, ETC.).
3. 0.4 R PERMISSIBLE ON ALL "SHARP" CORNERS.
4. VISIBLE CRACKS ARE NOT PERMISSIBLE.
5. PART ARE SYMMETRICAL ABOUT CENTERLINE.
6. PART ARE MADE FROM TIN PLATED STOCK.
7. TERMINALS SHALL BE FREE DEBRIS, RESIDUAL ABRASIVE MATERIALS, CORROSION PRODUCTS AND ANY EXTERNAL RESIDUES. NO LUBE EXCESS IS PERMISSIBLE.
8. "A" DENOTES CABLE SIZE OR GAUGE OF SECONDARY LEAD.
9. TERMINAL MUST BE ABLE TO WITHSTAND A TORQUE OF TBD Nm.
10. PARTS MUST BE KEPT THE SONIC WELDING AREA DRY PRIOR TO THE WELDING PROCESS.
11. SONIC WELD AREA AS NOTED ON DRAWING MUST BE KEPT FREE OF TIN PLATING OR OTHER COATING/PLATING.
12. TERMINALS TO BE LOOSE PIECE.
13. OPTIONAL CONSTRUCTION FOR EU ONLY
ALL DIMENSIONS TO BE THE SAME AS PREFERRED CONSTRUCTION EXCEPT PLATING ZONE MEASUREMENT
14. TERMINAL TAB CAN BE PARTIALLY OR FULL PLATED

19		PROCESS SENSITIVE DIMENSION	
DIMENSIONS ENCLOSED IN () INDICATE REFERENCE DIMENSIONS AND NO TOLERANCE LIMITS ARE ESTABLISHED			
DIMENSIONAL RANGE (MM)		CHART D	
FROM	0		
TO	12	>12	
TOLERANCE UNLESS OTHERWISE SPECIFIED			
	±0.1	±0.2	
ANGULAR TOLERANCE ±2°			

LINE DRAWING THROUGH A PART NUMBER INDICATE THAT PHYSICAL PARTS ARE NOT AVAILABLE FOR ORDERING.	
PART NUMBERS THAT DO NOT HAVE A LINE PRESENT INDICATE THAT PHYSICAL PARTS ARE AVAILABLE FOR ORDERING. CONTACT APVY SALES TO ASSURE AVAILABILITY OF PARTS.	
DWG TYPE PART DRAWING	
STYLE	
VOLUME (CM ³)	DISTR CODE 
UNLESS OTHERWISE SPECIFIED	
THIS DOCUMENT IS IN ACCORDANCE WITH ASME Y14.5M-1994 AS MODIFIED BY THE ISO GLOBAL DIMENSIONING AND FITTING ADDENDUM-2001. SEPARATE PATTERNS OF FEATURES MAY BE GAUGED SEPARATELY REGARDLESS OF DATUM REFERENCES.	
ALL DIMENSIONS ARE IN MILLIMETERS	
REFERENCE	

• APTIV •

CONNECTION SYSTEMS

WARREN, OH

COPYRIGHT 2018 APTIV. ALL RIGHTS RESERVED.

THIS DRAWING IS THE PROPERTY OF APTIV AND CONTAINS APTIV CONFIDENTIAL INFORMATION. THE REPRODUCTION, DISTRIBUTION AND UTILIZATION OF THIS DOCUMENT OR ITS RELATED CAD DATA, AS WELL AS COMMUNICATION OF ANY CONTENT TO OTHERS, WITHOUT EXPRESS AUTHORIZATION, IS PROHIBITED.

DW	DATE
APV01 ARMANDO HERNANDEZ	250C19
APV02 ARMANDO HERNANDEZ	250C18
APV03 LUIS BERINO	250C18
APV04	
APV05	

SUBSTANCES OF CONCERN AND RECYCLED
CONTENT PER APTIV 10949001

MATERIALS
SEE CHART

DRAWING NAME:

TAXI TERM RING SONIC

DRAWING NUMBER

15485965

SIZE	SCALE	FRAME NO	SHEET NO	S10	R15	REV	APP
A0	1	1	OF 1	13	0	05	

35240172	02	AC	1302	47.18 X 1.0	TIN PLATED COPPER ALLOY	6 - 15.25 15 - 20	1 - 12 1 - 4	8	12.97
35240173	03	AB	1301	47.18 X 1.0	TIN PLATED COPPER ALLOY	0.5 - 6.5	1 - 8	5	10.25
PART NO	REV	N/P	TYPE	MAT'L SIZE	MAT'L SPEC	BUNDLE SIZE MM²	NO. OF WIRES (MIN-MAX)	D	F ±0.5