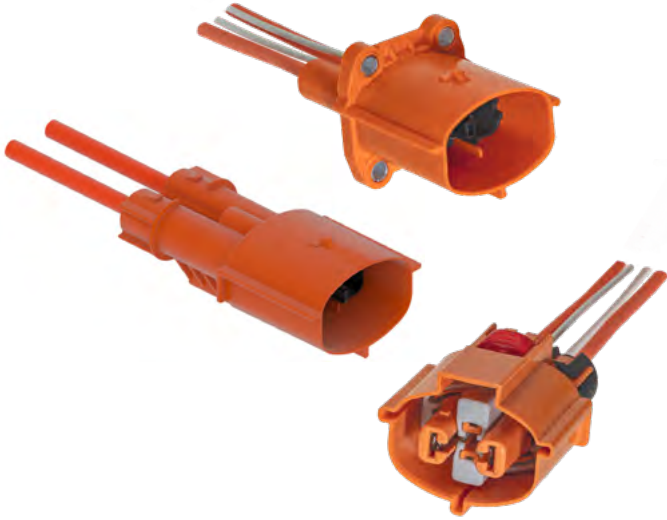


POWERPACK

HV630 UI OBC 2 WAY



AVAILABLE CONFIGURATIONS

Connector Type	Wire-to-device, wire-to-wire
Cable Exit Orientation	180°
Cable Range (mm ²)	6 - 12
Terminal Type	6.3 Terminal
# of Power Terminals	2 power
Shielding Type	Unshielded
HVIL	2 Signal cables
Assembly Assurance	CPA
Number of Indexes	3



APPLICATIONS

On-board charger (OBC)

See back page for representative part numbers and packaging dimensions.

BENEFITS

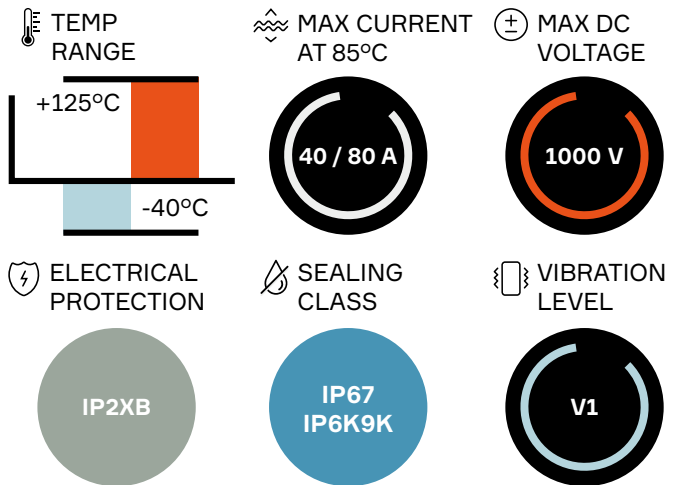
- Inner connector with TPA can be plugged into header during device assembly (on wire-to-device)
- Industry leading vibration performance
- External header housing is the same for the HV280 and HV630

FEATURES

- Tool-less unmating system
- Finger proof/touch safe
- Panel mount to device with face seal (on wire-to-device)
- Aluminum compression bushings
- ISO cable compatibility
- Secondary terminal locking



PERFORMANCE



About Aptiv

Aptiv is a global technology company that develops safer, greener and more connected solutions enabling the future of mobility.

Visit [aptiv.com](https://www.aptiv.com) →



CONNECTOR PART NUMBERS

Index	Header connector 80 A	Header connector 40 A Sealed even unmated	Inline Male Connector 80 A	Mating connector	BOM
101	35197119	35472532	35197170	35197127	1
102	35197120	-	35197171	35197129	1
103	-	-	35312616	35197131	1

ASSOCIATED PARTS

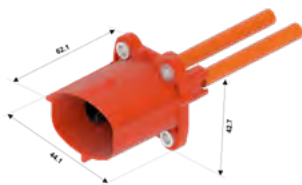
Part Number		Description	BOM
Header 80 A	Header 40 A Sealed even unmated		
35197125	35472597	TPA	1
	13964786	OCS 1.5 Male Terminal sealed 0.75 - 1 mm ²	2
	13834623	Cable Seal OCS 1.5, 0.75 - 1 mm ²	2
35135145*	-	6.3 Male Terminal	2
-	33386364	APEX® Male terminal 6.3 for 6 mm ²	2
-	10810380	Cable Seals - APEX® 6.3 for 6 mm ²	2
Inline connector			
	35197125	Inner Connector	1
	35197158	Cable Seal 8 mm ²	2
	35197159	Cable Seal 10 mm ²	2
	35197160	Cable Seal 12 mm ²	2
	35197162	Retainer - Cable Seal 8 mm ²	2
	35197163	Retainer - Cable Seal 10 & 12 mm ²	2
	13964786	OCS 1.5 Male Terminal sealed 0.75 - 1 mm ²	2
	13834623	Cable Seal OCS 1.5 0.75 - 1 mm ²	2
	35135145*	6.3 Male Terminals	2
Mating connector			
	35171862*	6.3 Female Terminals crimp version 6 - 10 mm ²	2
	35116544*	6.3 Female Terminals Weld to Wire option	2
	35406662**	Cable Seal 6 mm ²	2
	35197158	Cable Seal 8 mm ²	2
	35197159	Cable Seal 10 mm ²	2
	35197160	Cable Seal 12 mm ²	2
	35197162	Retainer - Cable Seal 6 & 8 mm ²	2
	35197163	Retainer - Cable Seal 10 & 12 mm ²	2
	35138799	OCS 1.5 Female Terminal sealed 0.75 - 1 mm ²	2
	35138798	OCS 1.5 Female Terminal sealed 1.25 - 1.5 mm ²	2
	35138799	Cable Seal OCS 1.5	2

* Non Aptiv terminal, please consult us

** Valid only for Header Connector 40A



DIMENSION MEASUREMENT SAMPLE



Header Connector 80A



Header Connector 40A



Inline Male Connector



Mating Connector

Part numbers, specifications, dimensions and performance data in this document are for general references only and are subject to change without notice. To verify product information, please contact an Aptiv representative.

CS-SP146-HV-En0323

• **A P T I V** •

aptiv.com | © 2023 Aptiv. All rights reserved