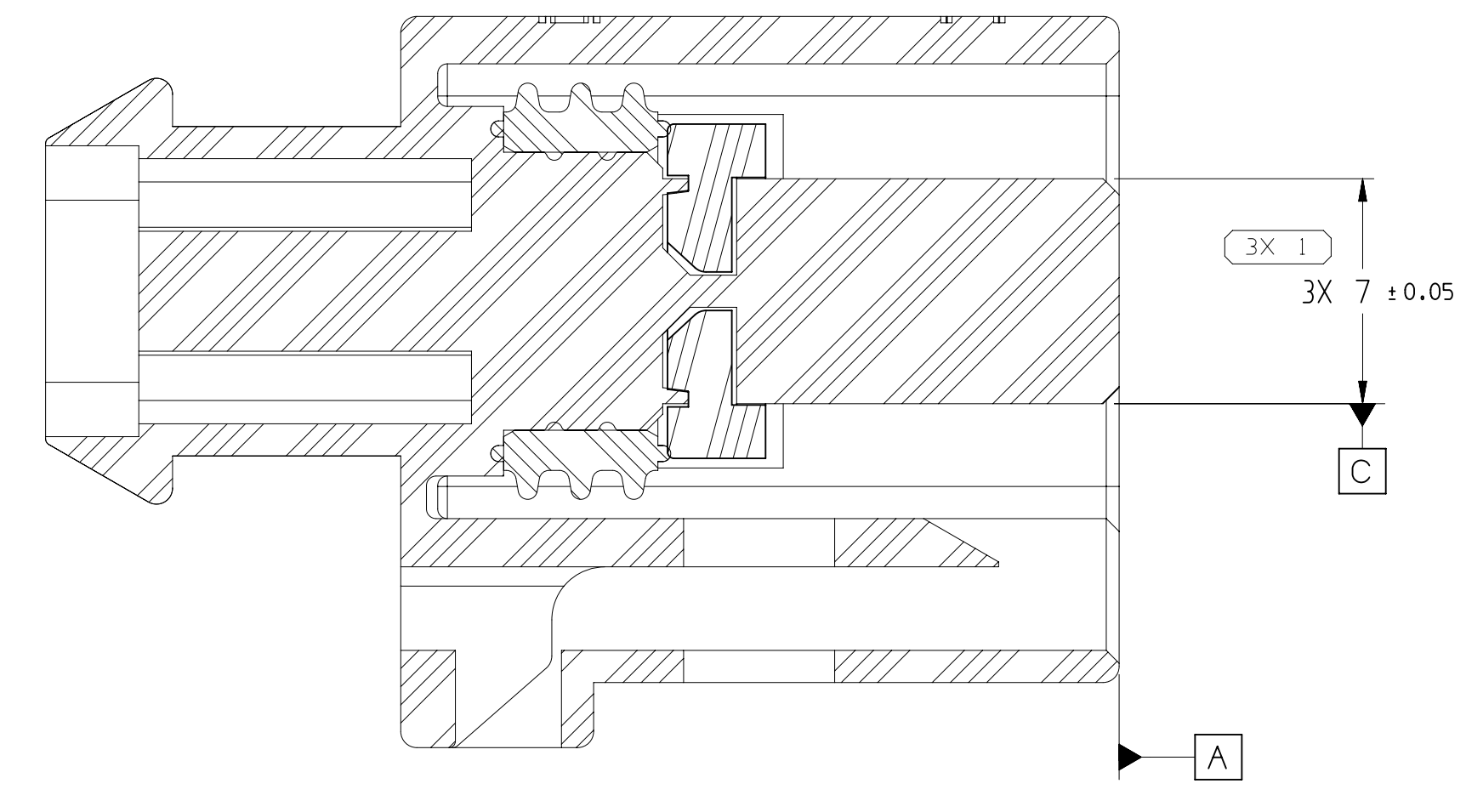
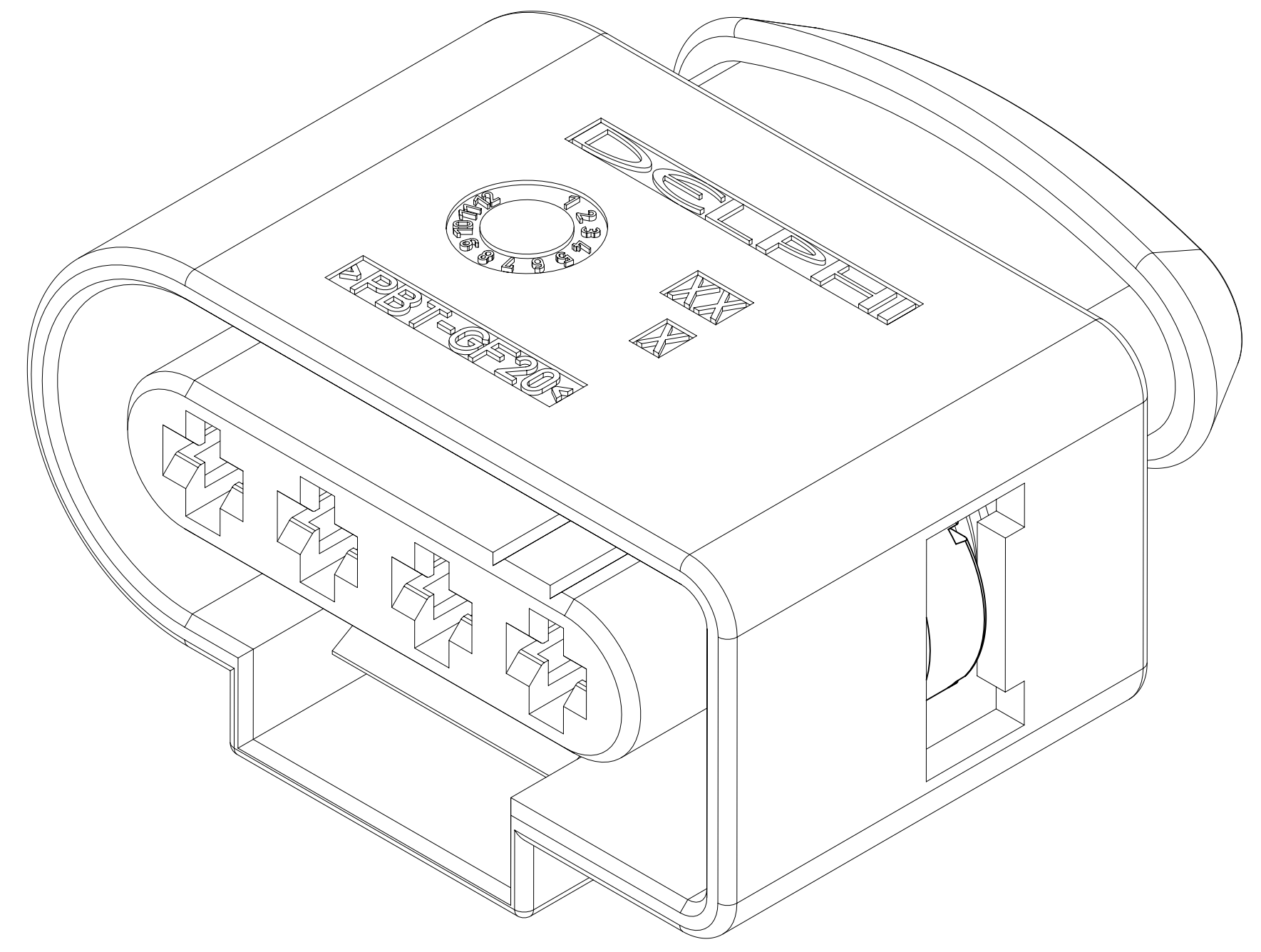
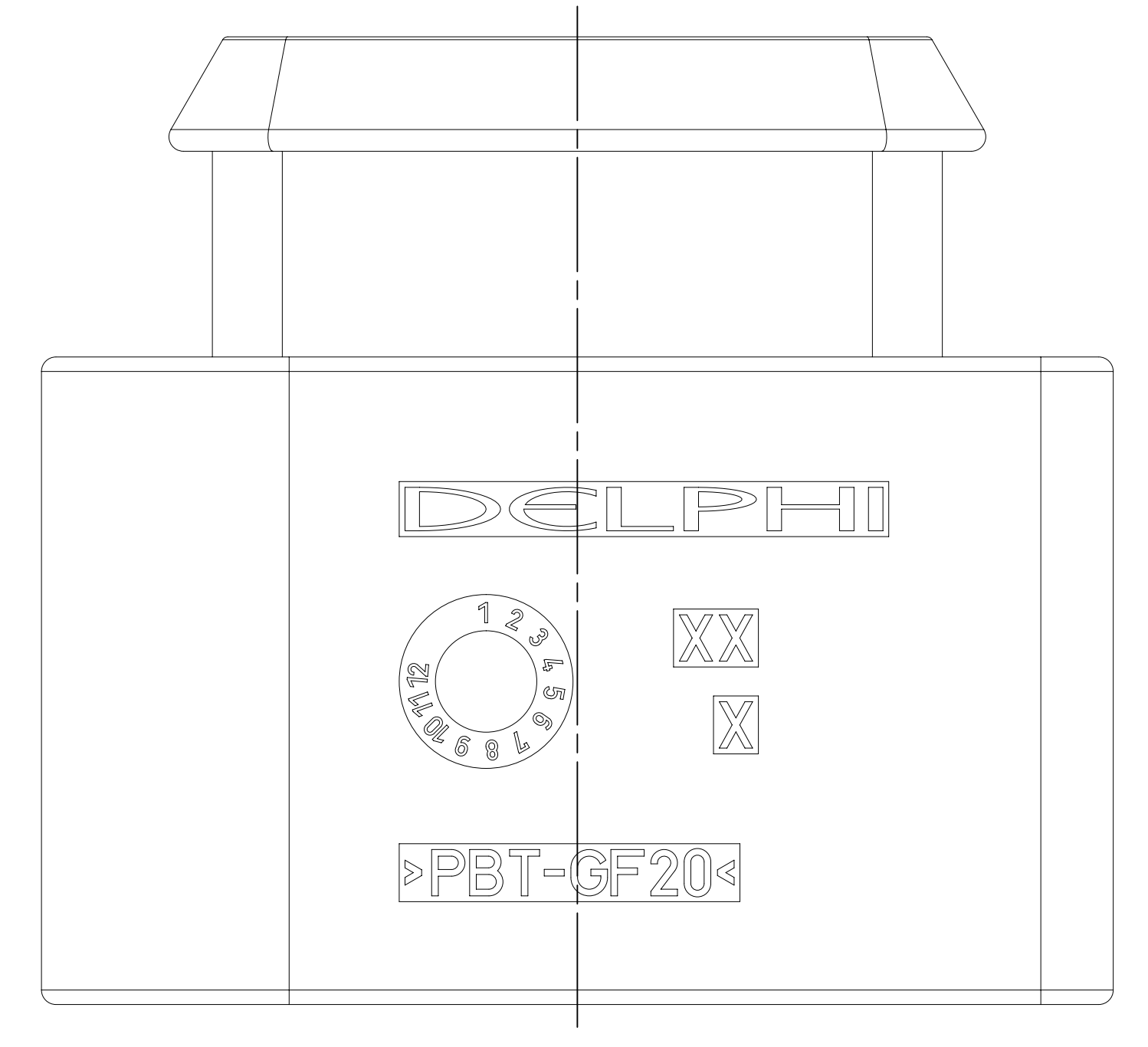
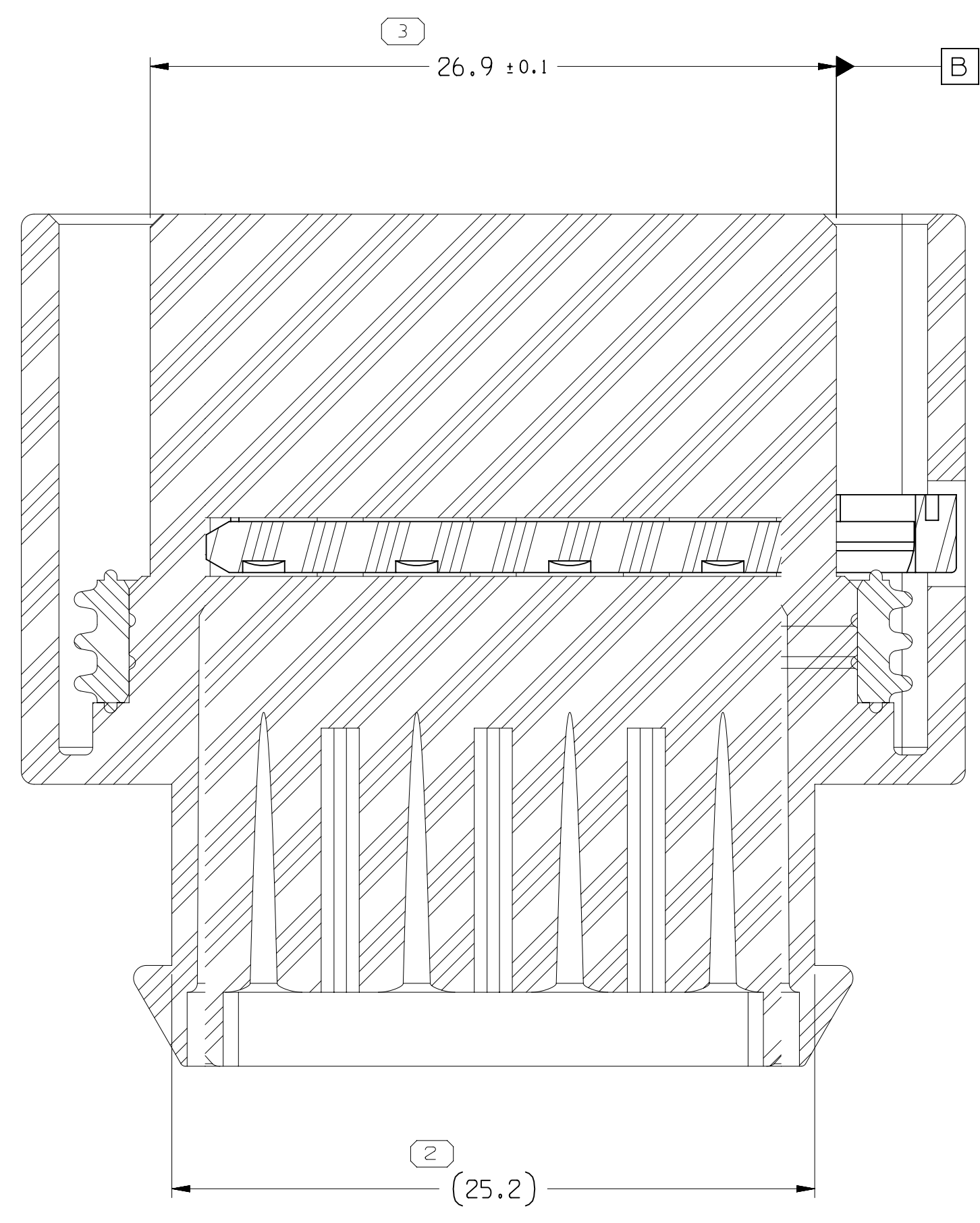
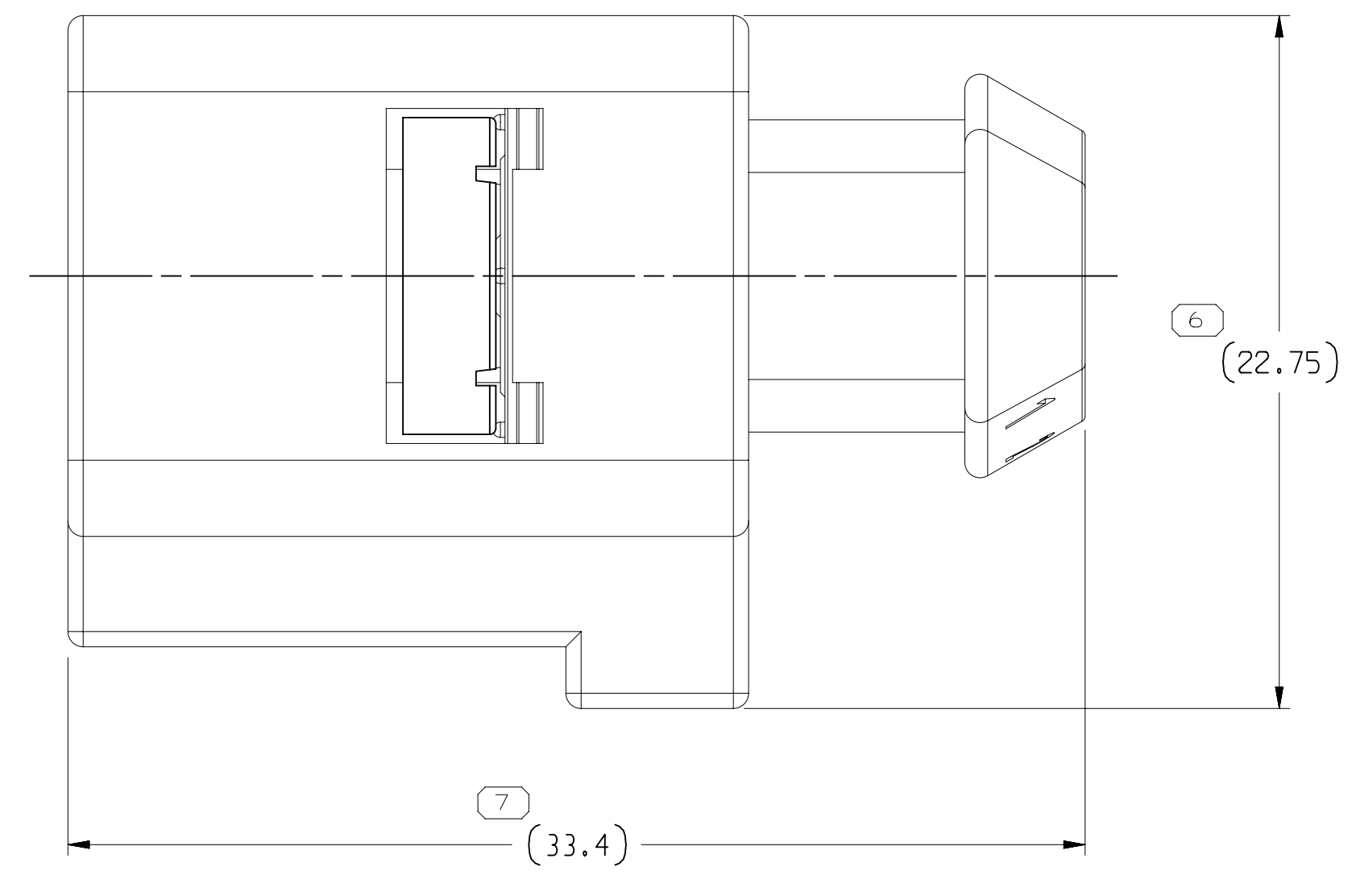
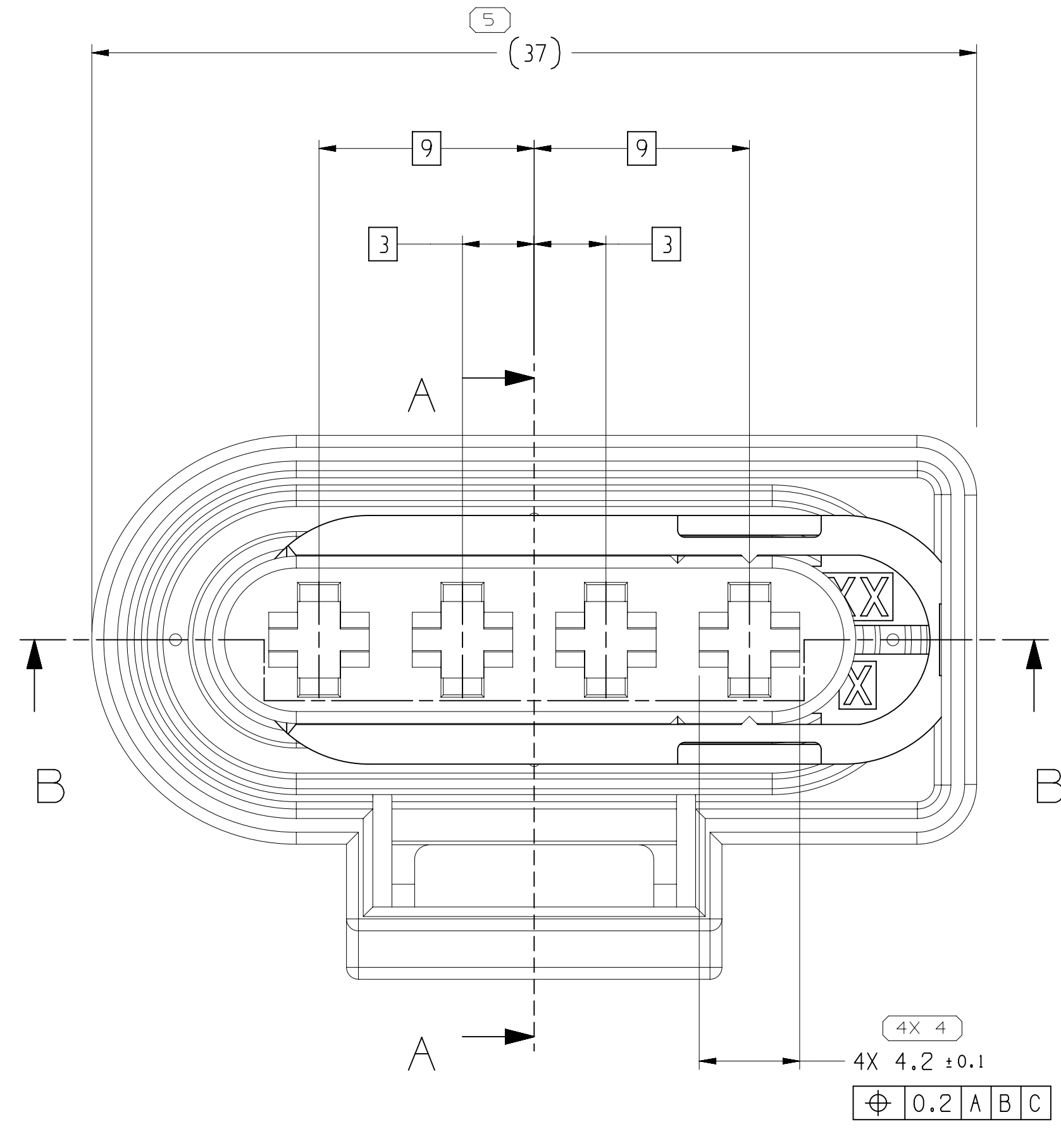


SYMBOL DEFINITION		TOTAL NO OF INSPECTIONS REQUIRED	MISSING SYMBOLS
A DIMENSION WITHOUT AN INSPECTION REPORT SYMBOL () DOES NOT REQUIRE INSPECTION. IT MAY BE CONTROLLED ON THE INDIVIDUAL COMPONENT DRAWING.		12	NO MISSING OL NUMBER
		LAST NO. USED	7

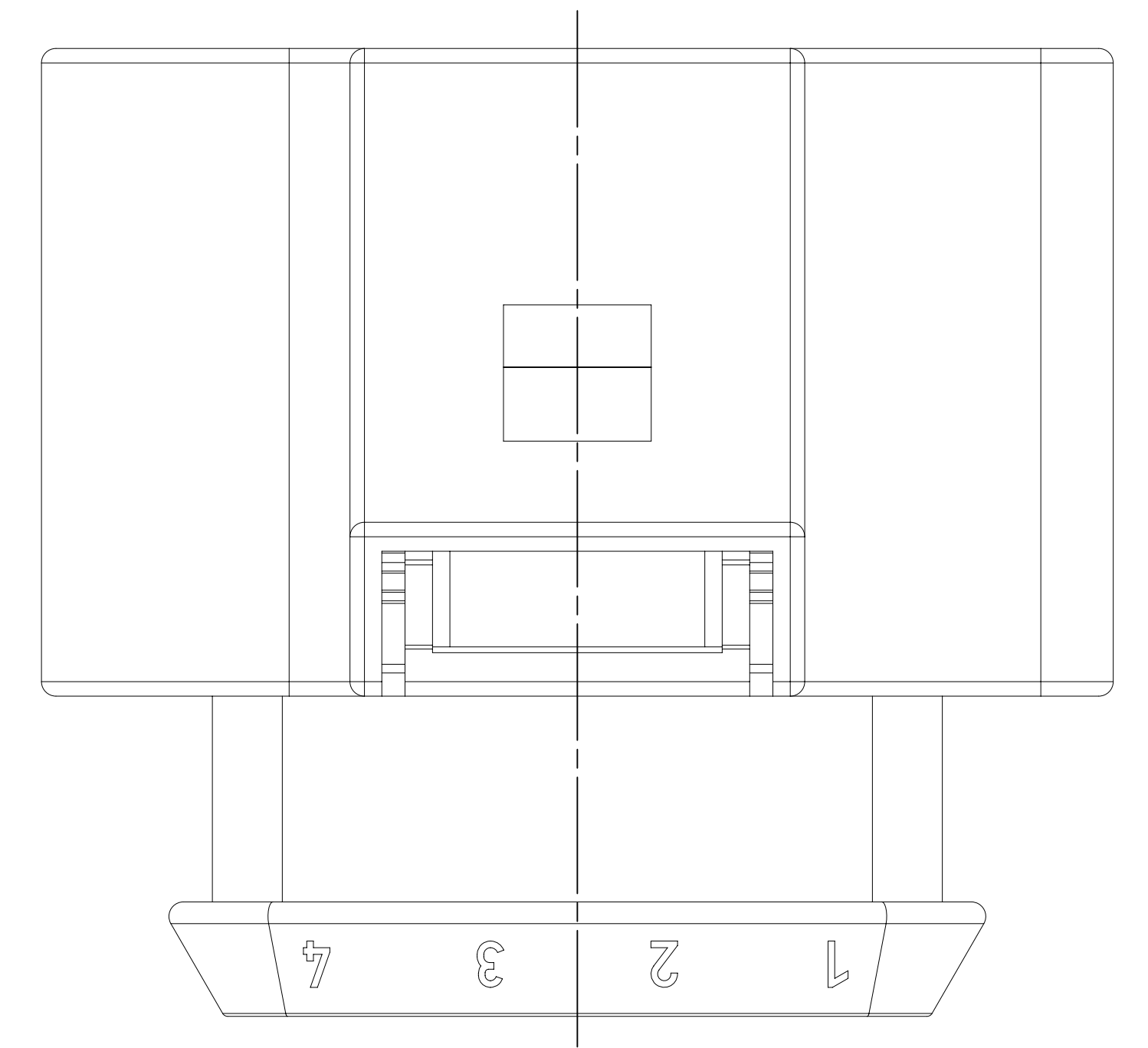
DWG STATUS	DATE	STG	REV	N/P	CHG	ZONE	REVISION HISTORY	AUTH	DR	APVD	APVD
14JN19	R	01	-	-	-		13601424 - WAS ON DRAWING 13601425, 3X 7 ± 0.05 WAS 7 & 26.9 ± 0.1 WAS 26.9 AND ADDED SEALING CODE NOTE: 35357261 - RELEASED	443484	LVD	JAA	LWV
20FE20	R	02	-	-	-		35357261 - UPDATED PART AVAILABILITY	551062	AHY	AHY	SV



SECTION A - A



SECTION B - B



NOTES

- UNLESS OTHERWISE SPECIFIED AND/OR INDICATED:
DIMENSIONS ARE TO FACE OF VIEW SHOWN AND AUTOMATICALLY ROUNDED BY COMPUTER FOR INSPECTION (SEE MATH MODEL FOR PRECISE DIMENSIONS). FOR ALL OTHER DIMENSIONS NOT SHOWN BUT REQUIRED FOR TOOL BUILD, SEE MATH MODEL FOR PRECISE TOOL PATH DATA.
- REFERENCE MATING COMPONENTS OR EQUIVALENT:
ACTIVE TERMINAL SYSTEM 280 SEALED 15344661
- THIS PRODUCT IS NOT CATEGORIZED AS AN APPEARANCE ITEM, MINOR IMPERFECTIONS INCLUDING, BUT NOT LIMITED TO, FLOW MARKS, COLOR BLEMISHES, GATE VESTIGE, AND SOFT FLASH THAT DO NOT AFFECT THE FIT, FORM, OR FUNCTION OF THE PART ARE PERMISSIBLE PER DPNP-4.7-CS-01.
- PART MECHANICALLY AND ENVIRONMENTALLY CONFORMS TO SAE/USCAR-2 R4:
CONNECTOR-CONNECTOR OR DEVICE MATING FORCE IS 100 N MAXIMUM.
SECONDARY LOCK ENGAGE FORCE TO FINAL POSITION IS 8N < X <= 60N
SECONDARY LOCK DISENGAGE FORCE FROM FINAL POSITION IS 8N < X <= 60N
SECONDARY LOCK RETENTION FORCE FROM PRE-STAGE POSITION IS 8N MINIMUM
- FOR APPLICATION DATA SEE THE INDIVIDUAL APPLICATION DRAWINGS.
- PART(S) RESTRICTED FOR USE IN FCA 2019KB PLATFORM AND TESLA MODEL. REFER TO CHART FOR SPECIFIC RESTRICTED PART NUMBERS.
- SEALING CODE 4 - DESIGN WILL MEET REQUIREMENTS OF SAE/USCAR-2 CONNECTOR SYSTEM ENVIRONMENTAL TEST FLOWCHART (PRESSURE/VACUUM AND SUBMERSION).

PART NO	REV	N/P	CONN BODY	SECONDARY LOCK	CONN SEAL	RESTRICTED USAGE
35357261	01	AA	13601422	13601420	13601418	-
13601424	02	AD	13601422	13601420	13601418	RESTRICTED (SEE NOTE #6)

DIMENSIONAL RANGE (MM)	TOLERANCE	CHART	ET
FROM 0 TO > 20	> 0.15	> 30	> 100
> 20 TO > 30	> 0.2	> 100	> 200
> 30 TO > 50	> 0.3	> 200	> 300
> 50 TO > 100	> 0.4	> 300	> 400
> 100 TO > 150	> 0.5	> 400	> 500
> 150 TO > 200	> 0.6	> 500	> 600
> 200 TO > 250	> 0.7	> 600	> 700
> 250 TO > 300	> 0.8	> 700	> 800
> 300 TO > 400	> 1.0	> 800	> 1000

APTIV
CONNECTION SYSTEMS
WARREN, OH
COPYRIGHT 2019 APTIV. ALL RIGHTS RESERVED.

THIS DRAWING IS THE PROPERTY OF APTIV AND CONTAINS APTIV CONFIDENTIAL INFORMATION. THE REPRODUCTION, DISTRIBUTION AND UTILIZATION OF THIS DOCUMENT OR ITS RELATED CAD DATA, AS WELL AS COMMUNICATION OF ANY CONTENT TO OTHERS, WITHOUT EXPRESS AUTHORIZATION, IS PROHIBITED.

DR	DATE
APVD1 LUIS VILLARREAL	14JN19
APVD2 J.S. ALVARADO	14JN19
APVD3 LUCIA MELCHOR	14JN19
APVD4	
APVD5	

UNLESS OTHERWISE SPECIFIED
THIS DOCUMENT IS IN ACCORDANCE WITH ASME Y14.5M-1994 AS MODIFIED BY THE 2018 GLOBAL DIMENSIONING AND TOLERANCING ADDENDUM-2009. SEPARATE PATTERNING OF FEATURES MAY BE AWARDED SEPARATELY REGARDLESS OF DATUM REFERENCES.

ALL DIMENSIONS ARE IN MILLIMETERS

UNLESS OTHERWISE SPECIFIED

THIRD ANGLE PROJECTION

DO NOT SCALE USE MATH DATA

DATE: 20-Feb-20 Time: 10:35:47