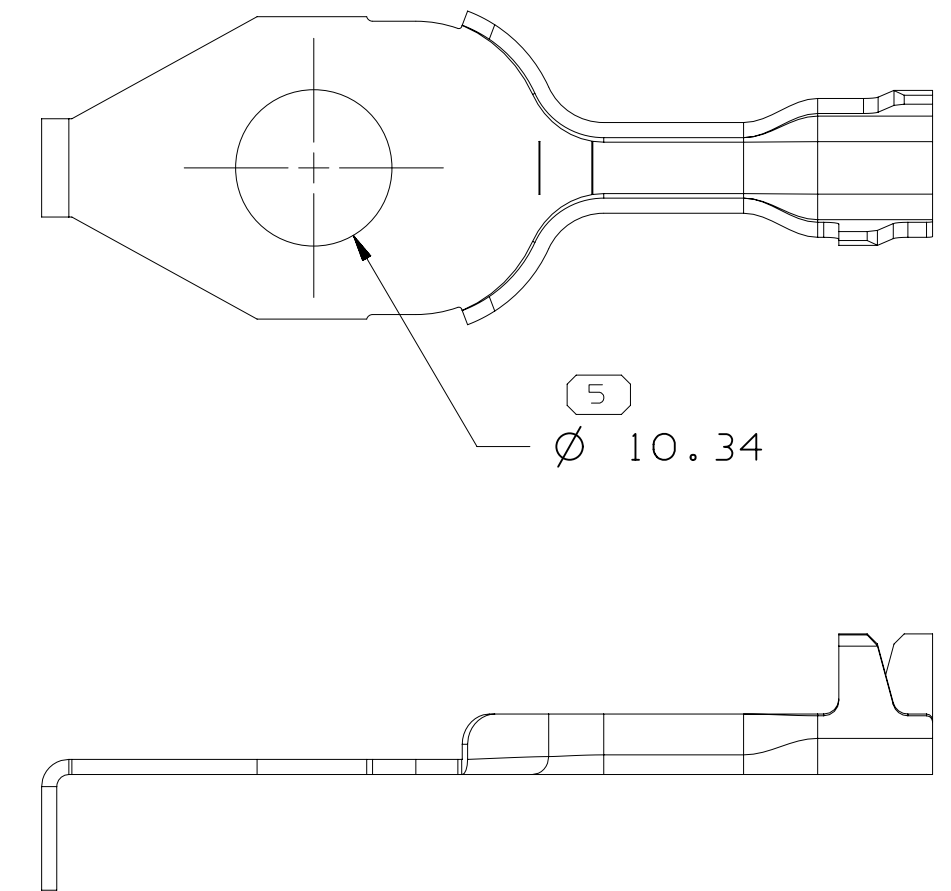
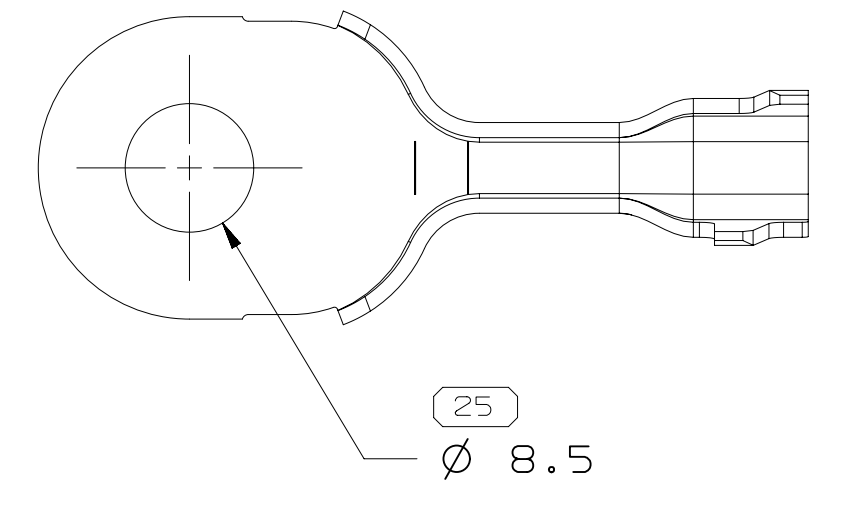


| SYMBOL DEFINITION | | MISSING SYMBOLS | |
|--|-----------------------------------|-----------------|--|
| A DIMENSION WITHOUT AN INSPECTION REPORT SYMBOL () DOES NOT REQUIRE INSPECTION. IT MAY BE CONTROLLED ON THE INDIVIDUAL COMPONENT DRAWING. | TOTAL NO. OF INSPECTIONS REQUIRED | 12-14 | |
| | LAST NO. USED | | |
| | 27 | | |
| | 27 | | |

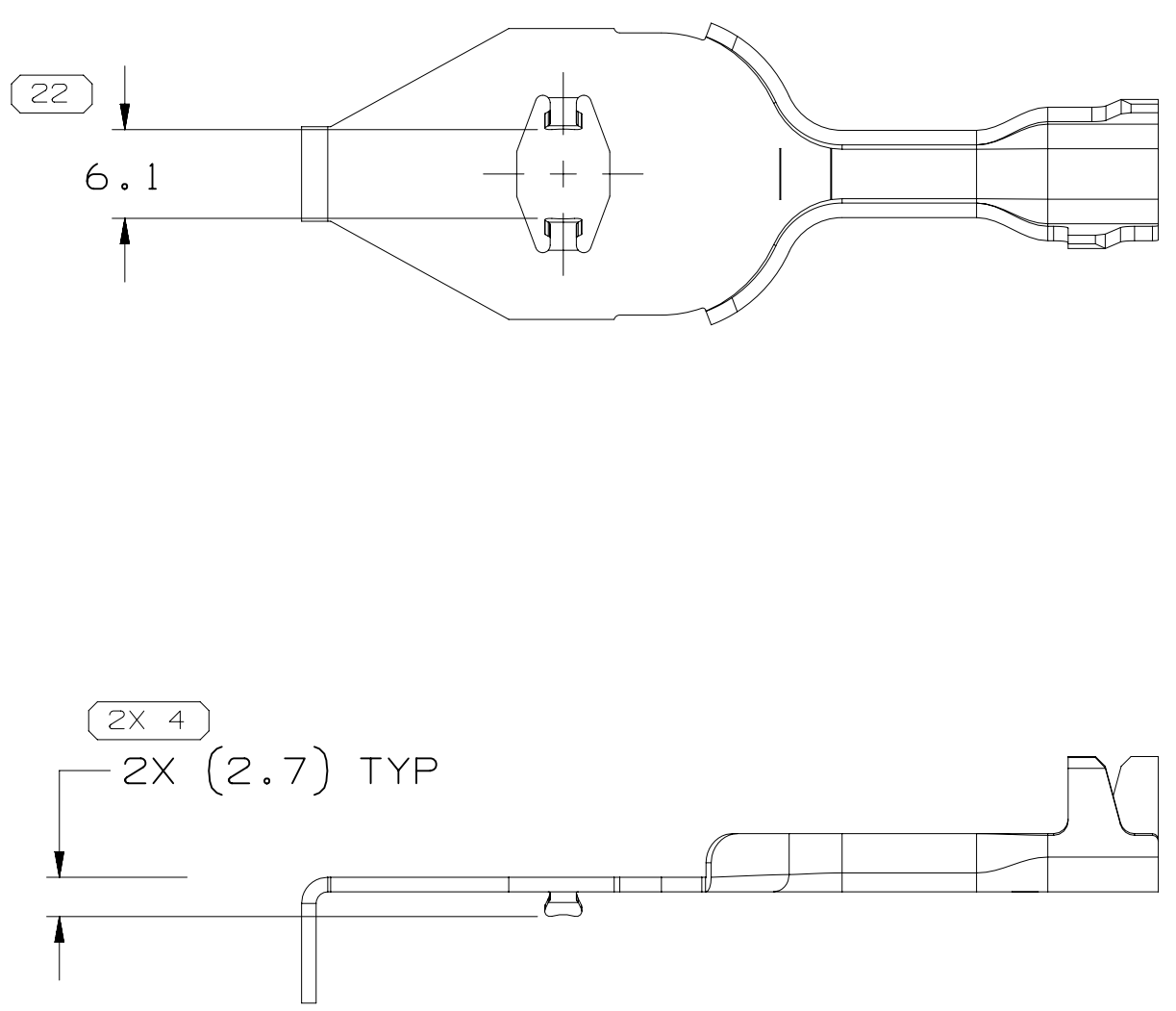
| DWG STATUS | | ZONE | | REVISION HISTORY | | AUTH | | DR | | APVD | |
|------------|-----|------|-----|------------------|---|--------|-----|-----|-----|------|--|
| DATE | STG | REV | N/P | CHG | | | | | | | |
| 01DE03 | R | 01 | - | - | SHEET 1 PART DRAWING CREATED AND RELEASED | 248906 | JEB | JEB | RAP | | |
| 13JA04 | R | 02 | - | - | 15482716-RELEASED; 15482714-RELEASED; 15485964-RELEASED; 15485962-RELEASED; 15485964-RELEASED; ALL PARTS-REVISED NOTE 2; ALL PARTS-DIM 9 WAS 16 Ø.3, DIM 125) WAS 25 Ø.15 | 250340 | ADK | END | RAP | | |
| 16MR04 | R | 03 | - | - | ALL PARTS - ADDED NOTE & DIMS 3 PLCS; 2X (9.3) WAS 2X (8.15); 2X (4) TYP WAS 2X 4 TYP & 2X (2.7) TYP WAS 2X 2.1 TYP; REVISED NOTE #2; MATL SPEC WAS MS302XXX - C102 | 252912 | MAC | MAC | RAP | | |
| 07AP04 | R | 04 | - | - | ALL PARTS - 10.25 +/-1 WAS 10.25 AND 16.5) WAS 6.5 | 253575 | EES | EES | RAP | | |
| 26MY04 | R | 05 | - | - | ALL PARTS - ADDED "NO. OF WIRES" COLUMN TO CHART & ADDED BUNDLE SIZES 15476583, 15482714, 15482716 - REVISED MATERIAL SPECS | 255191 | EES | EES | RAP | | |
| 29JN04 | R | 06 | - | - | 15476583, 15482714, 15482716 - 17 WAS 12; 7.7 Ø.3 WAS 12.7 Ø.3 | 256415 | ADK | ADK | RAP | | |
| 08JL09 | R | 07 | - | - | UPDATED PDM ATTRIBUTES | 408338 | RGC | MMC | RGC | | |
| 24MR10 | R | 08 | - | - | ALL PARTS - 4 +/-0.12MM WAS 4 +/-0.08MM | 410385 | JAR | JAR | CRD | | |
| 08AP10 | R | 09 | - | - | ALL PARTS - SH 1 OF 4 WAS SH 1 OF 2 | 410278 | ARC | ARC | CRD | | |
| 15MY10 | R | 10 | - | - | SHT 1 OF 6 WAS SHT 1 OF 4; ALL PARTS - ADDED "RESTRICTED USAGE" & "REPLACED BY" COLUMNS | 410844 | MAL | MAL | CRD | | |
| 25FE11 | R | 11 | - | - | ALL PARTS - UPDATED PDM ATTRIBUTES | 413473 | AHY | JVM | CRD | | |
| 17OC11 | R | 12 | - | - | ALL PARTS - REMOVED "RESTRICTED USAGE" AND "REPLACED BY" FROM CHART | 415770 | AHY | JVM | LRS | | |
| 25NO11 | R | 13 | - | - | 13918209 - RELEASED | 416217 | CBG | CBG | ACT | | |
| 16DE11 | R | 14 | - | - | ALL PARTS - RELOCATED SYMBOL CHART | 416497 | CBG | CBG | ACT | | |
| 29AU12 | R | 15 | - | - | 15485962 - CORRECTED ANTI-ROTATION COLUMN TO "NO" INSTEAD OF "YES" | 419450 | LRS | RGC | LRS | | |
| 05AU15 | R | 16 | - | - | ALL PARTS - ADDED PROCESS NOTES 4 & 6 AND SONIC WELD AREA LABEL; 13270287 - RELEASED AND ADDED NOTE OF CLEANNES | 430391 | NRM | JVM | ERG | | |
| 07SE15 | R | 17 | - | - | ALL PARTS - REVISED SHALL BE FREE OF DEBRIS NOTE; 33270287 - ADDED RESTRICTED USAGE COLUMN | 430477 | ABH | JVM | ERG | | |
| 07OC15 | R | 18 | - | - | 13918209, 15485964, 15485960, 15482714, 15482716 - PROCESS NOTE NON APPLICABLE; 15476583 - OBSOLETE | 430973 | ERG | VMR | ERG | | |
| 22NO17 | R | 19 | - | - | SHT 1 OF 12 WAS SHT 1 OF 7 | 438258 | ASL | JVM | LES | | |
| 25OC18 | R | 20 | - | - | "SHT 1 OF 14" WAS "SHT 1 OF 12" | 441115 | AHG | AHG | LB | | |



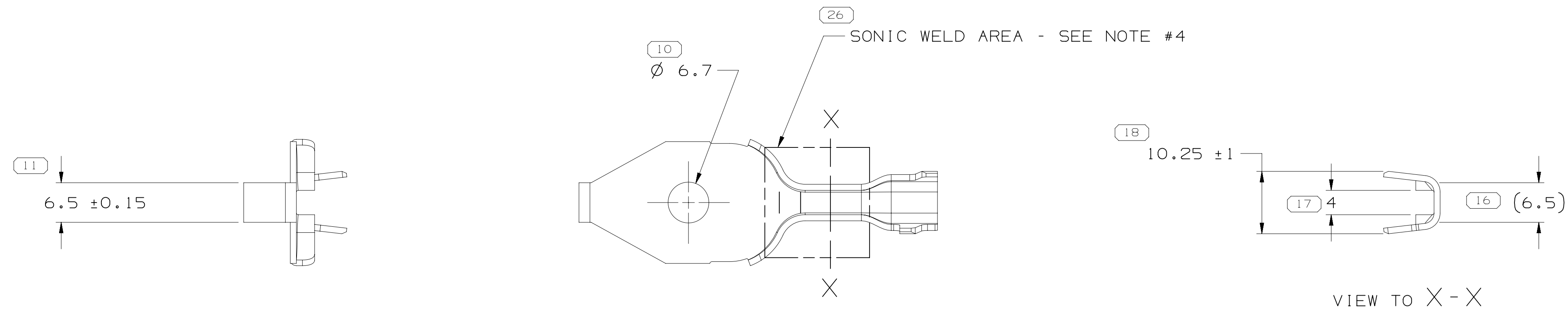
TYPE 102
SAME AS TYPE 101
EXCEPT AS SHOWN



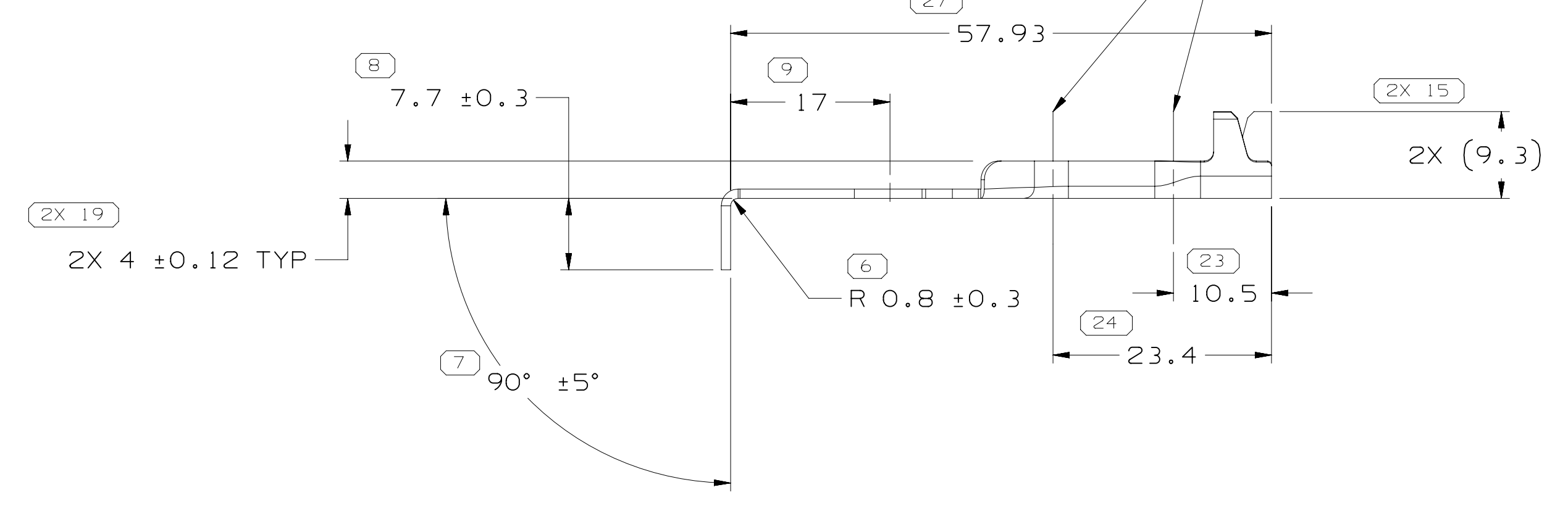
TYPE 107
SAME AS TYPE 106
EXCEPT AS SHOWN



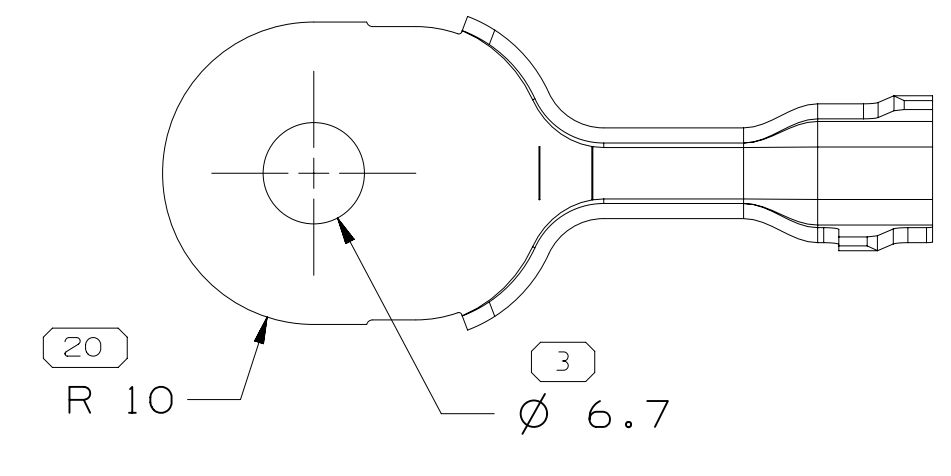
TYPE 103
SAME AS TYPE 101
EXCEPT AS SHOWN



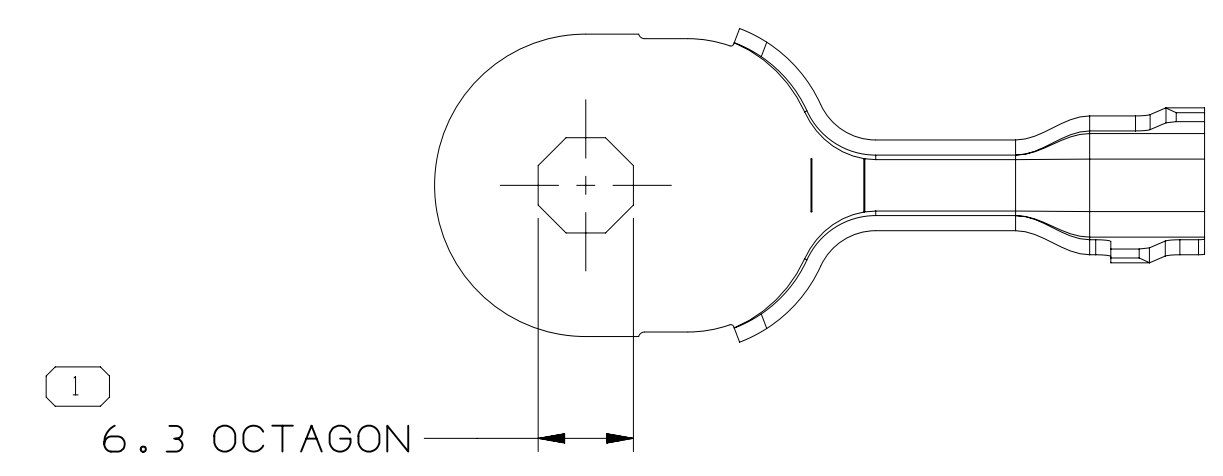
THE TOP OF FORMED WALLS (2 SIDES) MUST BE 4 ± 0.12MM IN HEIGHT WITHIN THIS SPECIFIED AREA.



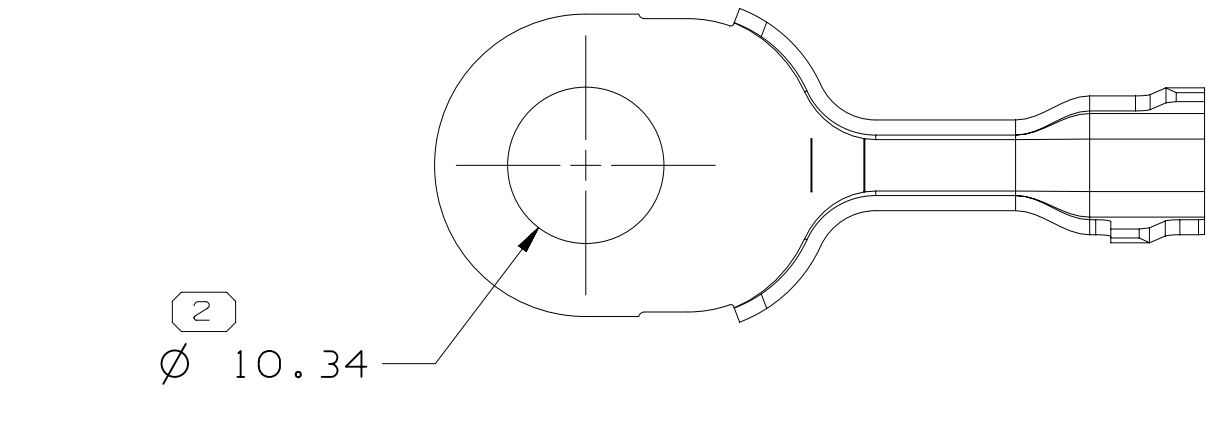
TYPE 101



TYPE 104
SAME AS TYPE 101
EXCEPT AS SHOWN



TYPE 105
SAME AS TYPE 104
EXCEPT AS SHOWN



TYPE 106
SAME AS TYPE 104
EXCEPT AS SHOWN

- NOTES
- UNLESS OTHERWISE SPECIFIED AND/OR INDICATED:
DIMENSIONS ARE TO FACE OF VIEW SHOWN AND AUTOMATICALLY ROUNDED BY COMPUTER FOR INSPECTION (SEE MATH MODEL FOR PRECISE DIMENSIONS). FOR ALL OTHER DIMENSIONS NOT SHOWN BUT REQUIRED FOR TOOL BUILD, SEE MATH MODEL FOR PRECISE TOOL PATH DATA.
 - TERMINAL MUST BE MADE USING FIN-LUBE 0177 STAMPING LUBE OIL. ANY OTHER LUBRICANT MUST BE APPROVED BY PRODUCT ENGINEERING.
 - TERMINALS ARE TO BE SINGULATED FROM CARRIER AND PLACED IN CLEAN CLOSED PLASTIC BAG PRIOR TO STORAGE AND SHIPMENT.
 - SONIC WELD AREA AS DEFINED ON DRAWING MUST BE KEPT FREE OF TIN PLATING OR OTHER COATING/PLATING.
 - PARTS MUST BE KEPT THE SONIC WELDING AREA DRY PRIOR TO THE WELDING PROCESS.
 - PARTS RESTRICTED FOR USE IN LEAR ONLY. REFER TO CHART FOR SPECIFIC RESTRICTED PART NUMBERS.

PROCESS NOTE

- PARTS SHALL BE FREE OF DEBRIS; RESIDUAL ABRASIVE MATERIALS; CORROSION PRODUCTS; OIL/LUBRICANT AND ANY EXTERNAL RESIDUE.

| PART NO | REV | N/P | MAT'L SIZE | MATERIAL SPECIFICATION | TYPE | ANTI-ROTATION | BUNDLE SIZE MM ² | NO. OF WIRES (MIN-MAX) | RESTRICTED USAGE | PROCESS NOTE |
|----------|-----|-----|------------|------------------------|------|---------------|-----------------------------|------------------------|------------------|--------------|
| 33270287 | 01 | AA | 1.0 X 55 | COPPER ALLOY | 105 | YES | 2.5-6.5 | 1-8 | SEE NOTE 6 | - |
| 13918209 | 01 | AD | 1.0 X 55 | COPPER ALLOY | 107 | NO | 2.5-6.5 | 1-8 | - | - |
| 15485964 | 02 | AL | 1.0 X 55 | COPPER ALLOY | 106 | NO | 2.5-6.5 | 1-8 | - | - |
| 15485962 | 02 | AL | 1.0 X 55 | COPPER ALLOY | 105 | YES | 2.5-6.5 | 1-8 | - | - |
| 15485960 | 02 | AL | 1.0 X 55 | COPPER ALLOY | 104 | NO | 2.5-6.5 | 1-8 | - | - |
| 15476583 | 03 | AJ | 1.0 X 70 | COPPER ALLOY | 103 | YES | 2.5-6.5 | 1-8 | - | - |
| 15482714 | 03 | AJ | 1.0 X 70 | COPPER ALLOY | 102 | YES | 2.5-6.5 | 1-8 | - | - |
| 15482716 | 03 | AJ | 1.0 X 70 | COPPER ALLOY | 101 | YES | 2.5-6.5 | 1-8 | - | - |

| | |
|--|---------|
| 18 PROCESS SENSITIVE DIMENSION | |
| DIMENSIONS ENCLOSED IN () INDICATE REFERENCE DIMENSING AND NO TOLERANCE LIMITS ARE ESTABLISHED. | CHART D |
| FROM 0 TO 12 | > 12 |
| TOLERANCE UNLESS OTHERWISE SPECIFIED | ±0.1 |
| ANGULAR TOLERANCE | ±2° |

| | | |
|------------------------|--------------|---------------|
| THIRD ANGLE PROJECTION | DO NOT SCALE | USE MATH DATA |
|------------------------|--------------|---------------|

APTIV
CONNECTION SYSTEMS
WARREN, OH
COPYRIGHT 2003 APTIV. ALL RIGHTS RESERVED.
THIS DRAWING IS THE PROPERTY OF APTIV AND CONTAINS APTIV CONFIDENTIAL INFORMATION. THE REPRODUCTION, DISTRIBUTION AND UTILIZATION OF THIS DOCUMENT OR ITS RELATED CAD DATA, AS WELL AS COMMUNICATION OF ANY CONTENT TO OTHERS, WITHOUT EXPRESS AUTHORIZATION, IS PROHIBITED.

DRAWING NUMBER: 15485965
SHEET NO: 1 OF 7
REV: 01

Title: 01833-1B
Date: 02/25/2010
Time: 09:38:32