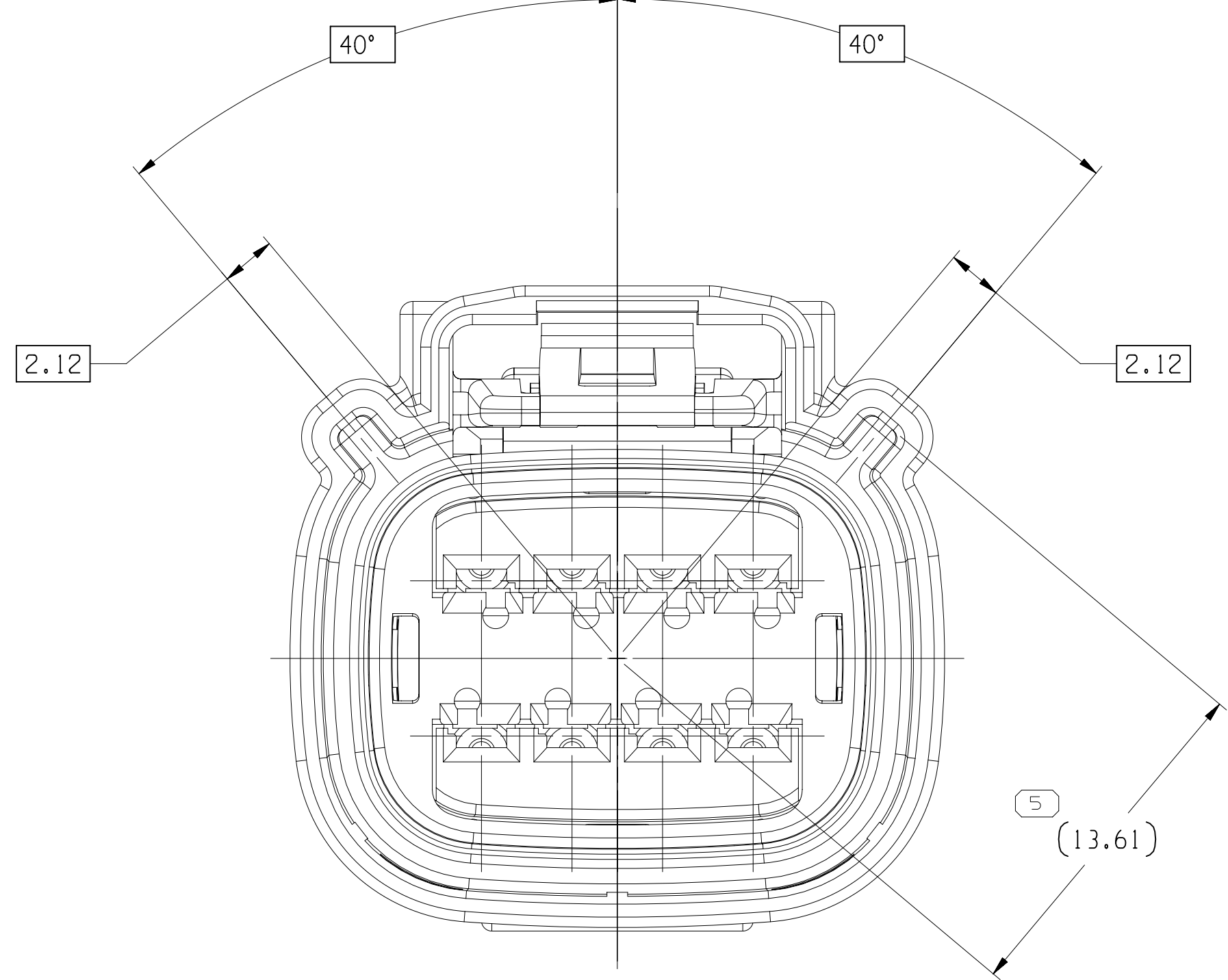
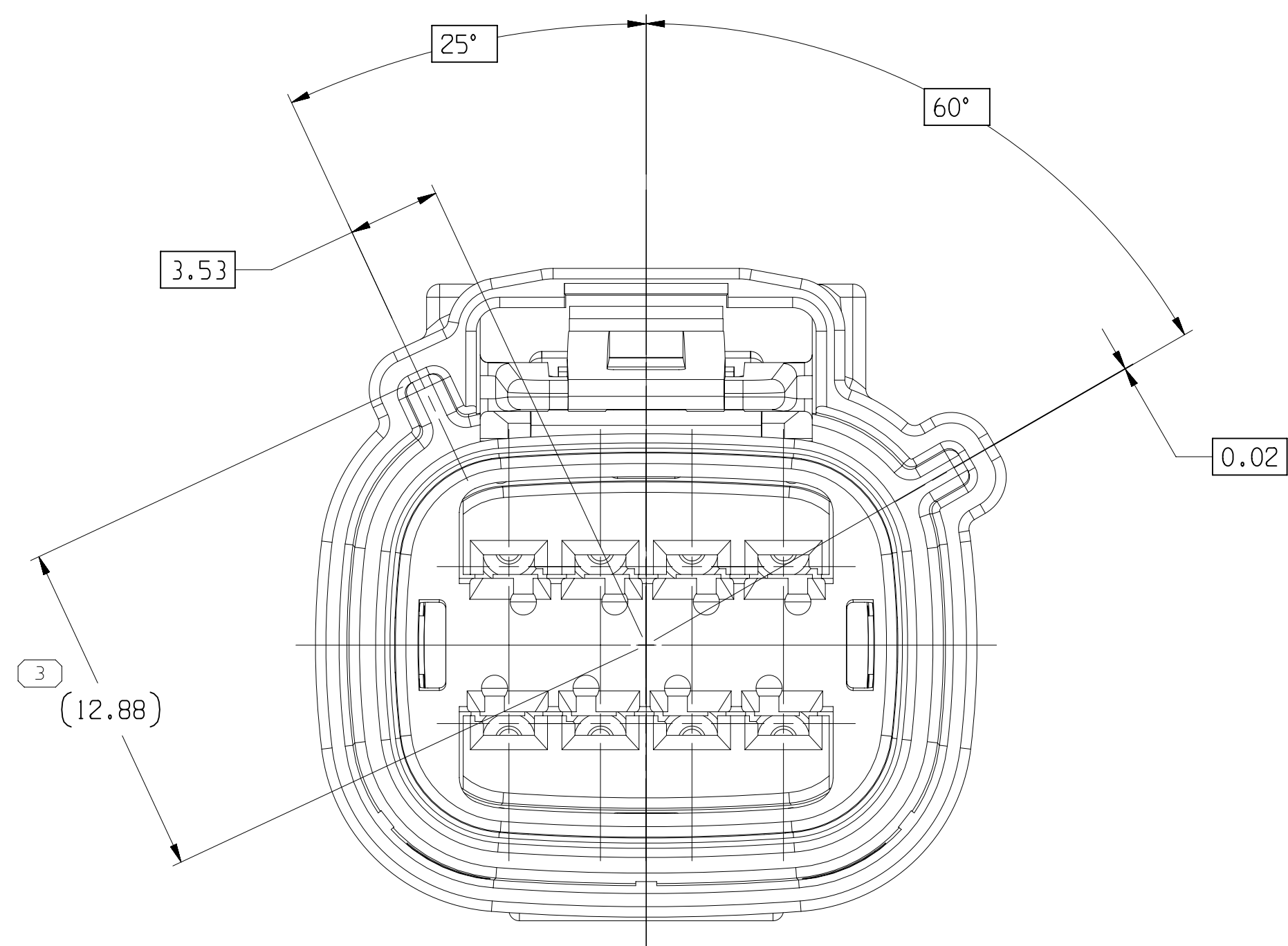


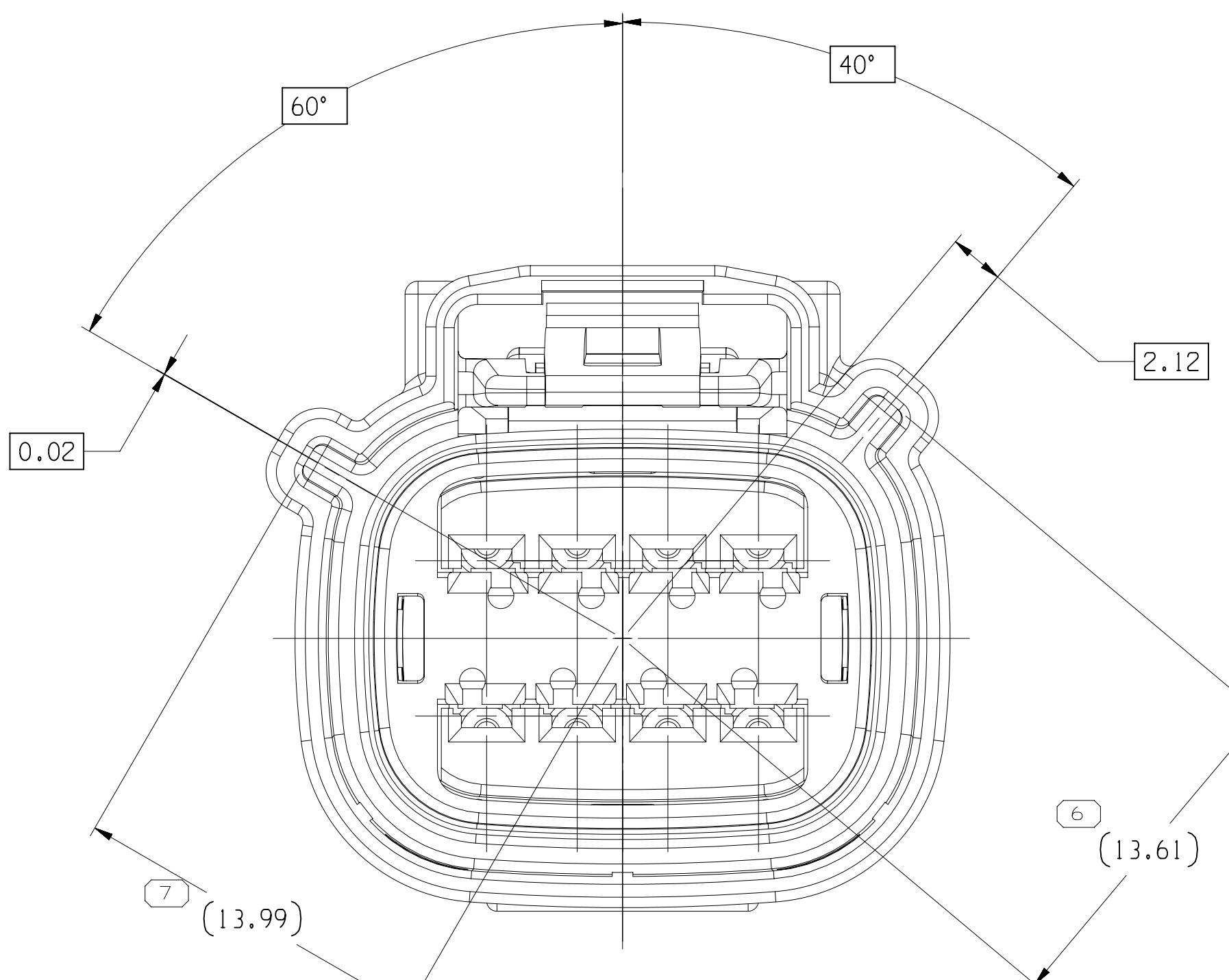
TYPE 102
SAME AS TYPE 101
EXCEPT AS SHOWN



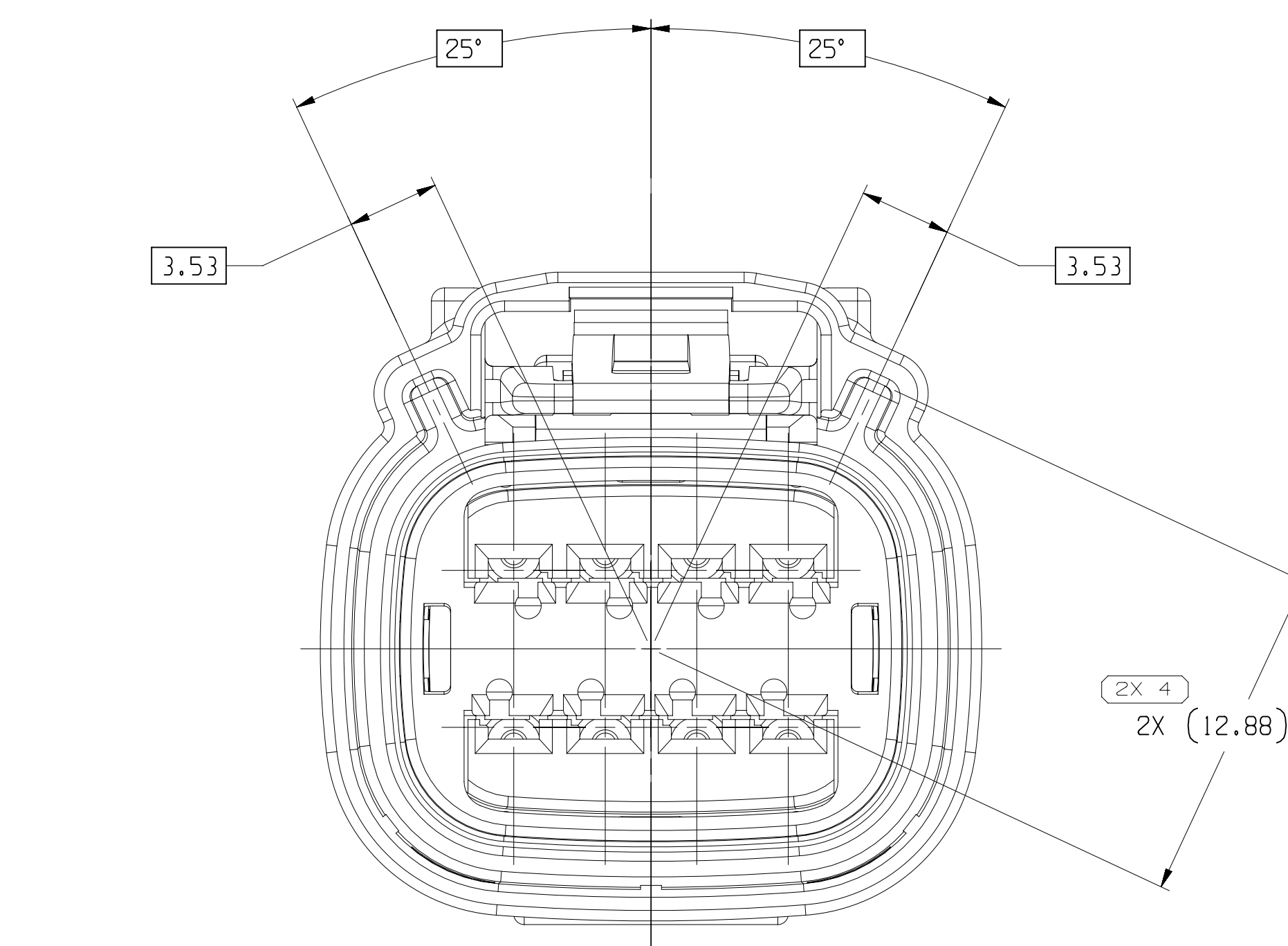
TYPE 105
SAME AS TYPE 101
EXCEPT AS SHOWN



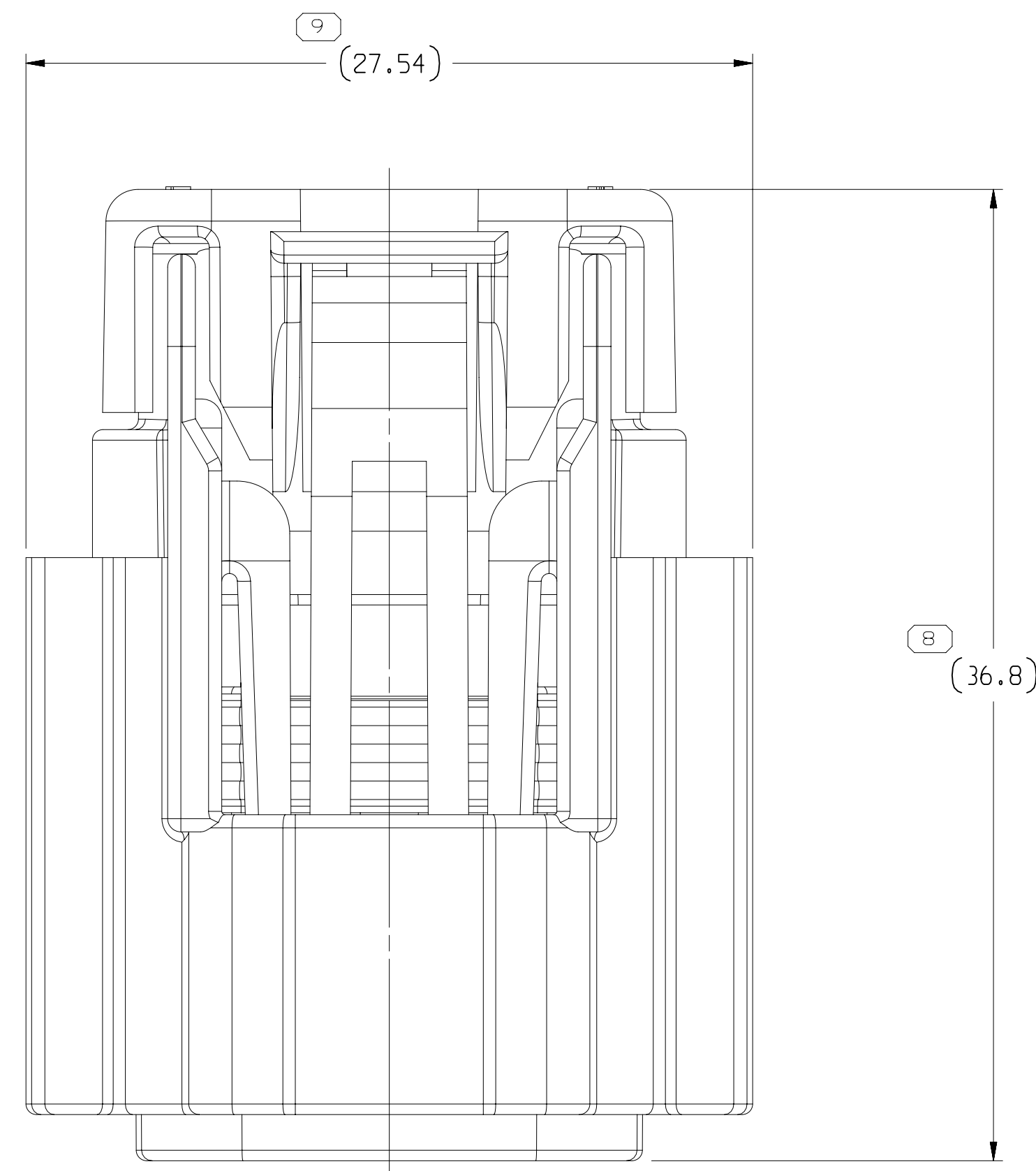
TYPE 103
SAME AS TYPE 101
EXCEPT AS SHOWN



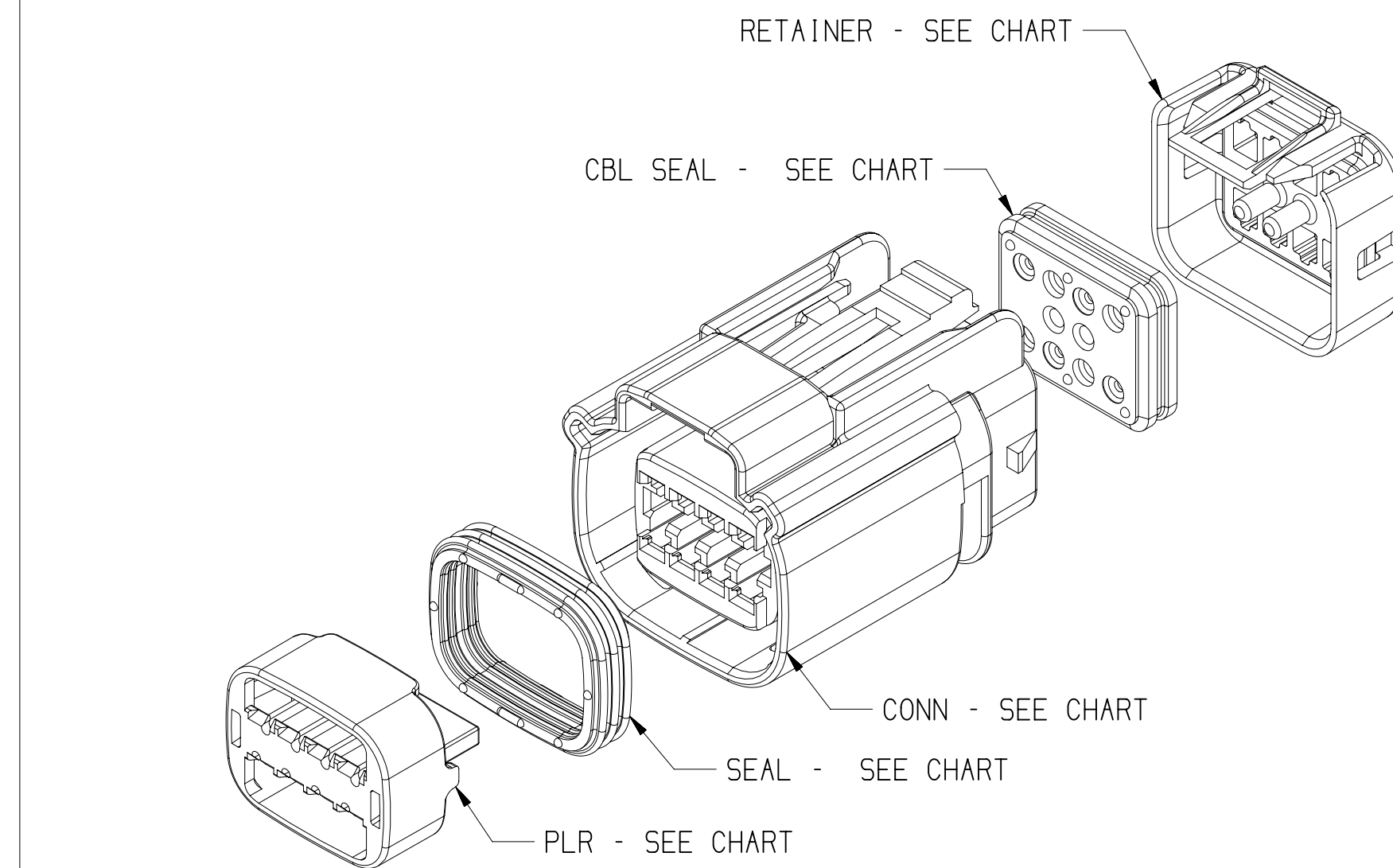
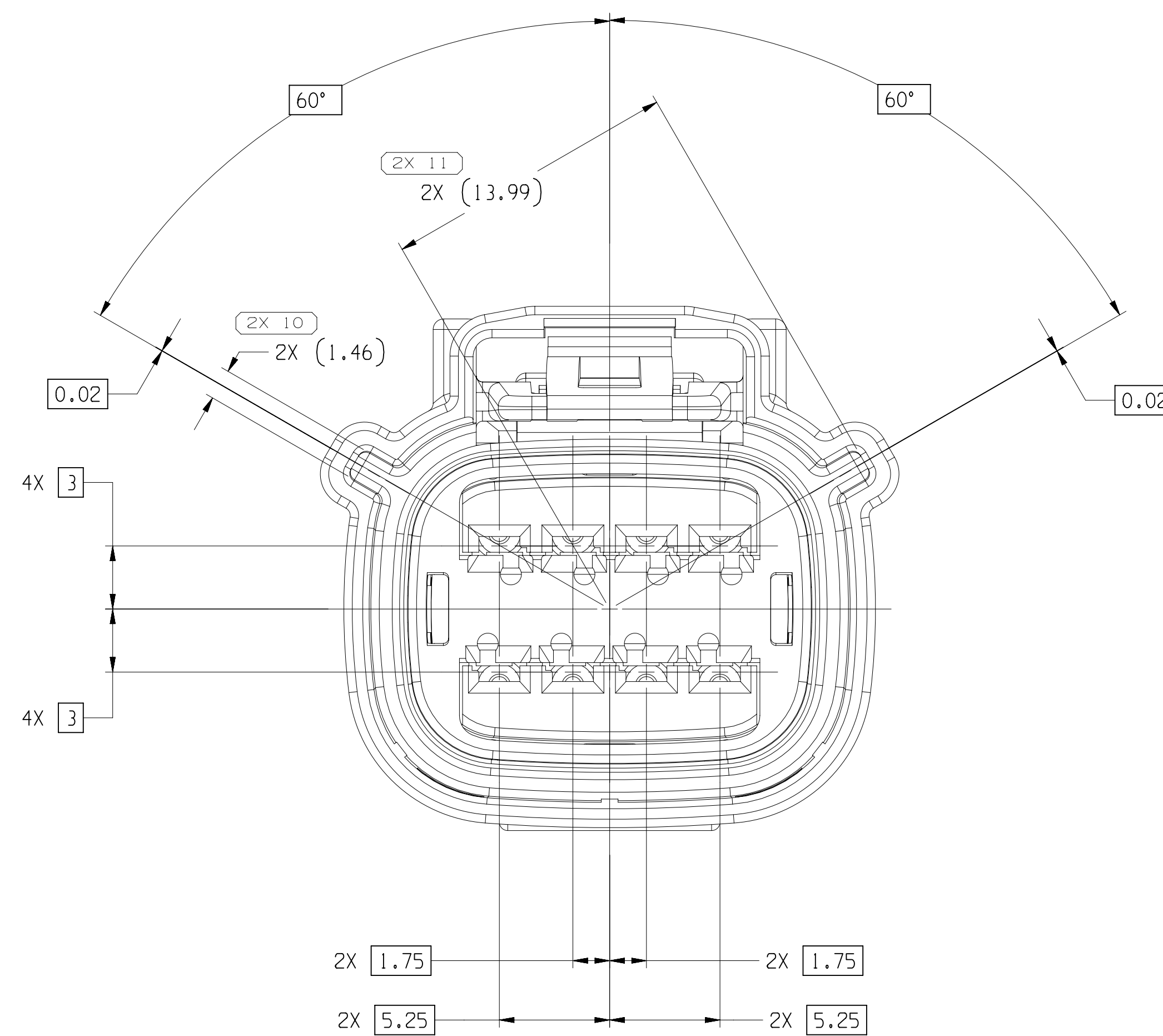
TYPE 106
SAME AS TYPE 101
EXCEPT AS SHOWN



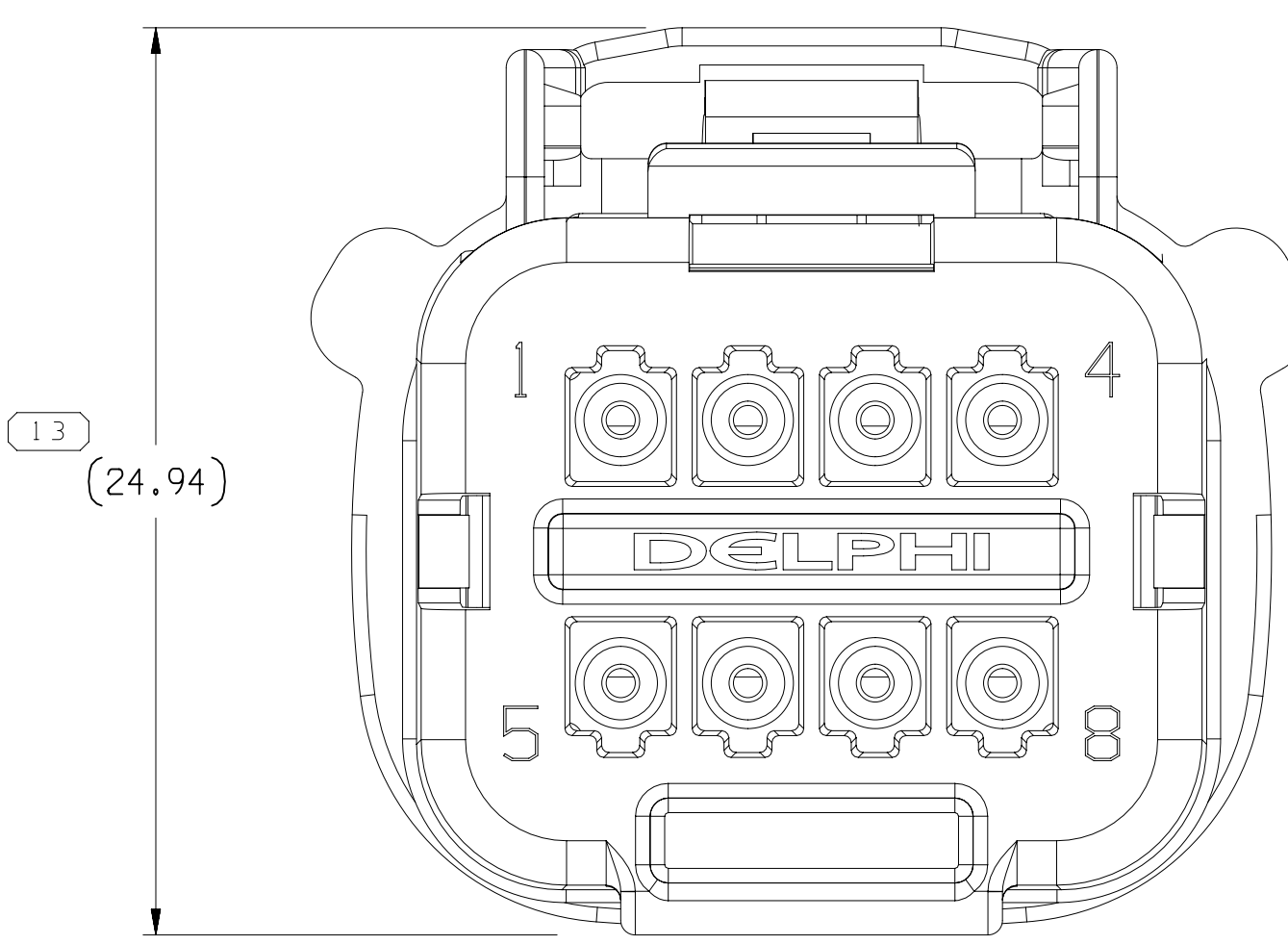
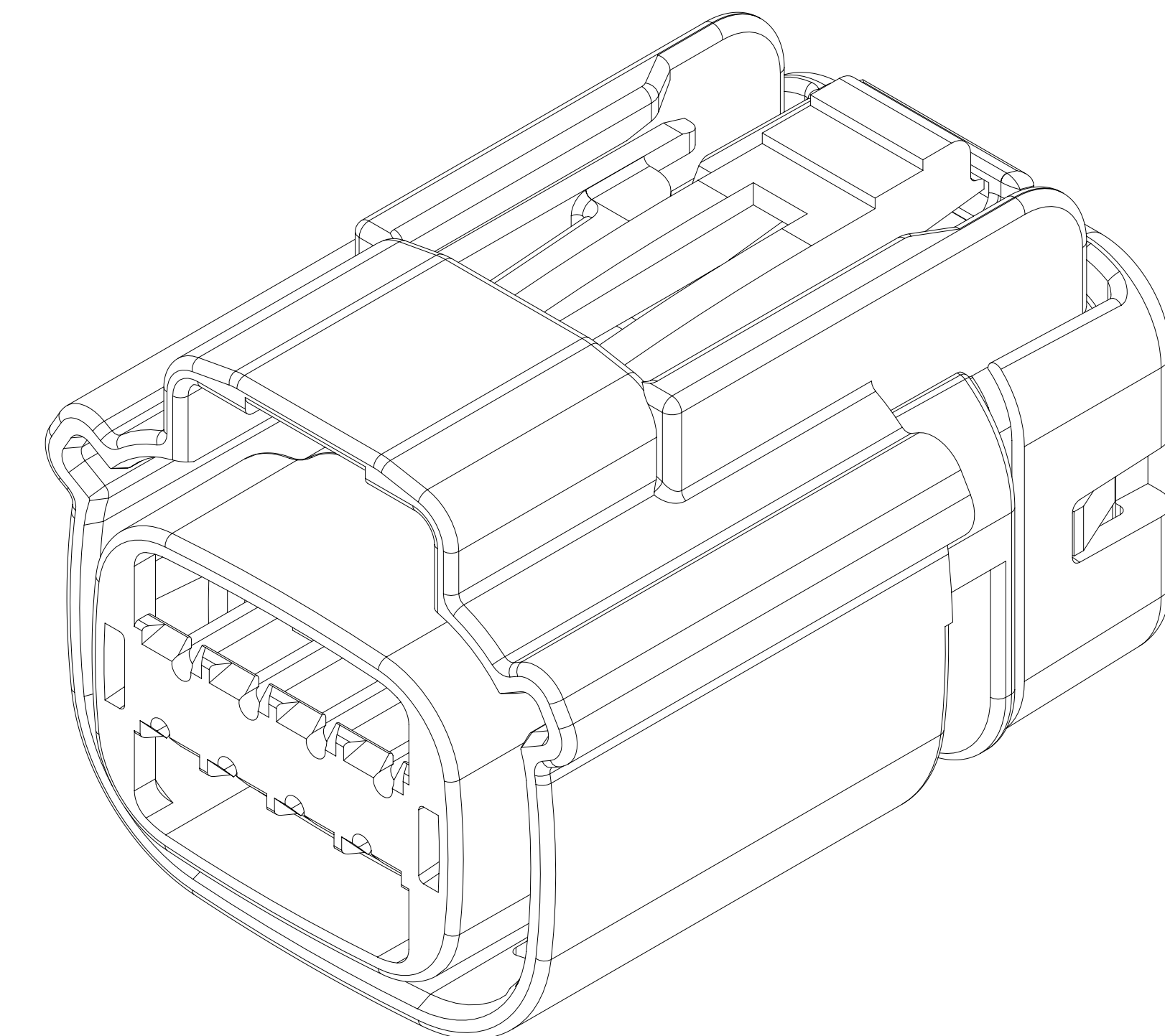
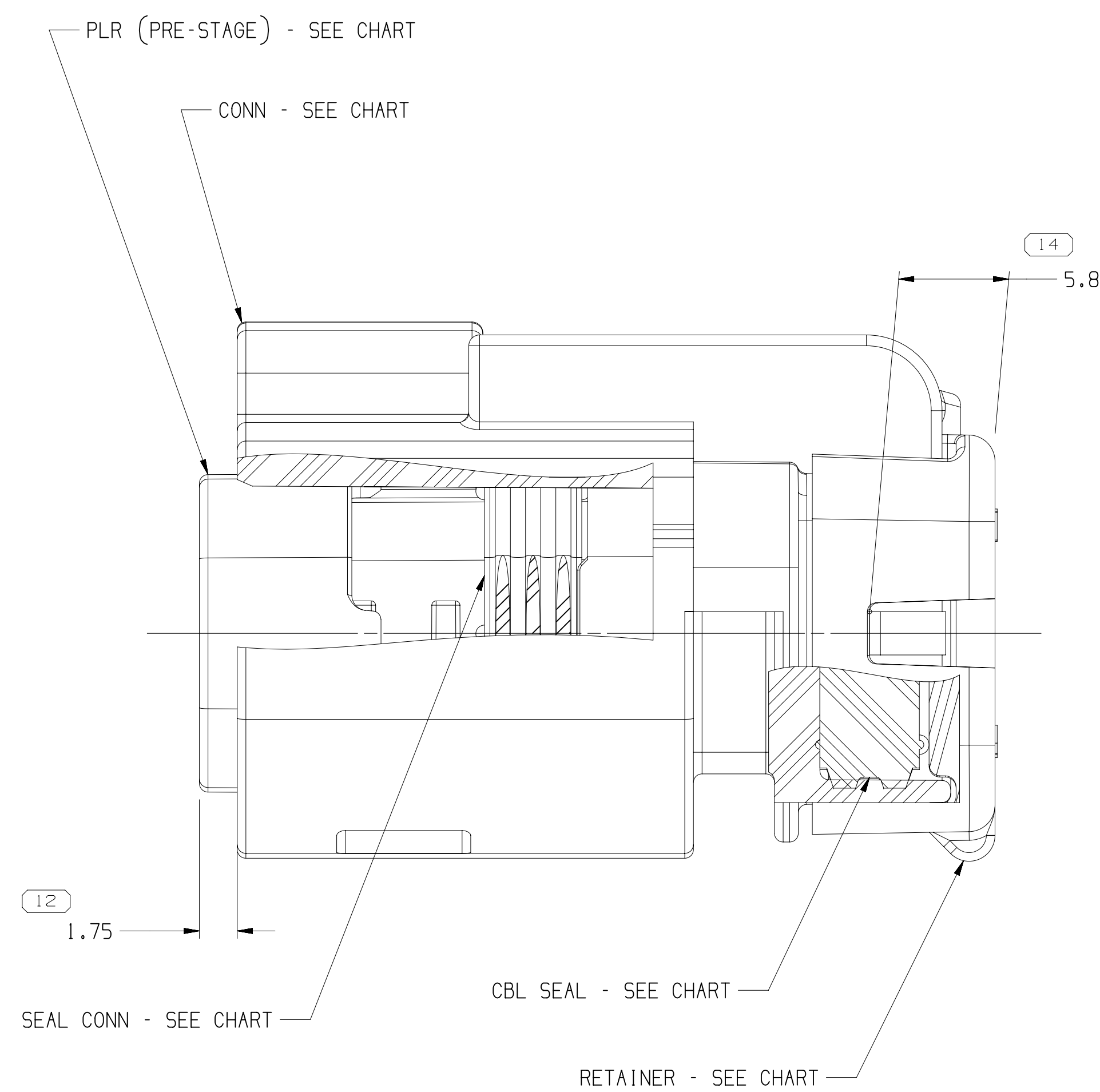
TYPE 104
SAME AS TYPE 101
EXCEPT AS SHOWN



TYPE 101



EXPLODED VIEW
SCALE 2:1



NOTES

- UNLESS OTHERWISE SPECIFIED AND/OR INDICATED:
DIMENSIONS ARE TO FACE OF VIEW SHOWN AND AUTOMATICALLY ROUNDED BY COMPUTER FOR INSPECTION (SEE MATH MODEL FOR PRECISE DIMENSIONS). FOR ALL OTHER DIMENSIONS NOT SHOWN BUT REQUIRED FOR TOOL BUILD, SEE MATH MODEL FOR PRECISE TOOL PATH DATA.
- PART IS MANUFACTURED TO GEOMETRIC TOLERANCES. CENTERLINE DIMENSIONS ARE FOR REFERENCE ONLY.
- SEALING CODE 4 - DESIGN WILL MEET REQUIREMENTS OF SAE/JEOPAR-2 CONNECTOR SYSTEM ENVIRONMENTAL TEST FLOWCHART (PRESSURE/VACUUM AND SUBMERSION).
- THIS PRODUCT IS NOT CATEGORIZED AS AN APPEARANCE ITEM. MINOR IMPERFECTIONS INCLUDING, BUT NOT LIMITED TO, FLOW MARKS, COLOR BLEMISHES, GATE VESTIGE, AND SOFT FLASH THAT DO NOT AFFECT THE FIT, FORM, OR FUNCTION OF THE PART ARE PERMISSIBLE PER EIA-3-3CS-01-EN.
- FOR APPLICATION DATA SEE THE INDIVIDUAL APPLICATION DRAWINGS.
- ASSEMBLY TO BE USED WITH APPROPRIATE APTV HOLDER DESIGN.
- ASSEMBLY TO BE PROCESSED USING APTV CONNECTION SYSTEMS BEST PRACTICE METHODS AND/OR CONNECTOR ASSEMBLY INSTRUCTIONS AND APPLICABLE REPAIR PROCEDURES.
- BEFORE TERMINAL ASSEMBLY: VERIFY THAT PLR IS IN THE PRE-STAGE POSITION ON THE CONNECTOR. IF NOT: RETURN PLR TO PRE-STAGE POSITION.
- FOR DIFFERENT PUNCH PATTERN CONFIGURATIONS (IF AVAILABLE) SEE SHEET 2
- FOR ASSEMBLIES WITH CPA SEE DRAWING 15514673

15532410	02	AC	106	15514665	15514685	15514684	15514683	15514678	F
15532409	02	AC	105	15514664	15514685	15514684	15514683	15514678	E
15532408	02	AC	104	15514663	15514685	15514684	15514683	15514678	D
15532407	02	AC	103	15514662	15514685	15514684	15514683	15514678	C
15532406	02	AC	102	15514661	15514685	15514684	15514683	15514678	B
15532405	02	AE	101	15514659	15514685	15514684	15514683	15514678	A
PART NO	REV	N/P	TYPE	CONNECTOR	PLR	SEAL CONN	RETAINER	USCAR OPTION	

FUNCTIONAL PART NO	15532402	DATE	15532402
FROM	0	TO	15532402
TO	15532402	TO	15532402
TO	15532402	TO	15532402
TO	15532402	TO	15532402
TO	15532402	TO	15532402
TO	15532402	TO	15532402
TO	15532402	TO	15532402
TO	15532402	TO	15532402
TO	15532402	TO	15532402

THIRD ANGLE PROJECTION	DO NOT SCALE	USE MATH DATA
------------------------	--------------	---------------

SIZE	SCALE	FRAME NO	SHEET NO	REV	NOT
A1x3	5:1	1 OF 2	1 OF 2	R	08

DATE	15532402
BY	EDUARDO SENA
CHKD	ALICIA GUERRERO
APPV	ALICIA GUERRERO
DATE	15532402

CONNECTION SYSTEMS	WARRANTY
CONNECTION SYSTEMS	WARRANTY
CONNECTION SYSTEMS	WARRANTY
CONNECTION SYSTEMS	WARRANTY
CONNECTION SYSTEMS	WARRANTY
CONNECTION SYSTEMS	WARRANTY
CONNECTION SYSTEMS	WARRANTY
CONNECTION SYSTEMS	WARRANTY
CONNECTION SYSTEMS	WARRANTY
CONNECTION SYSTEMS	WARRANTY

50435221