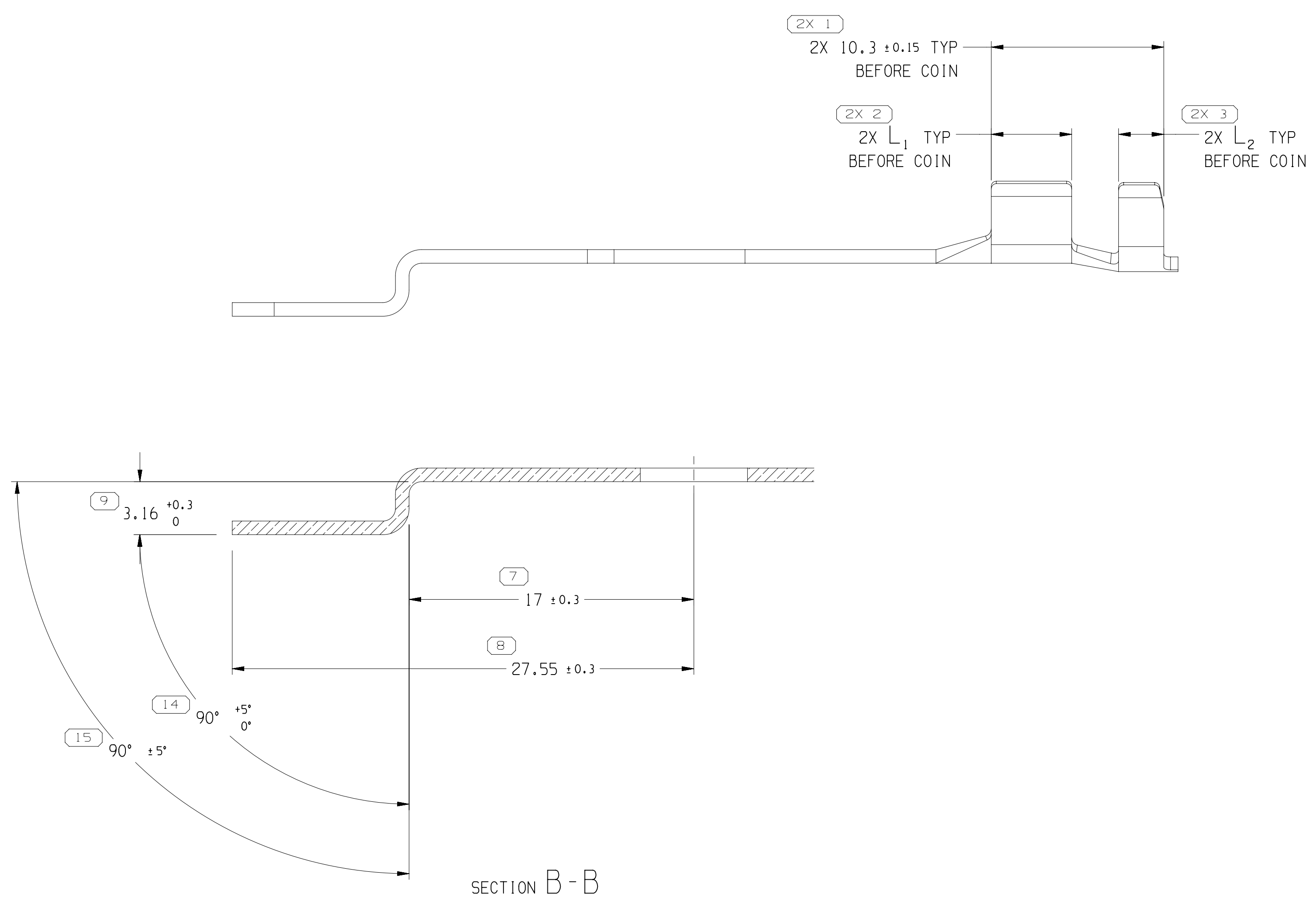
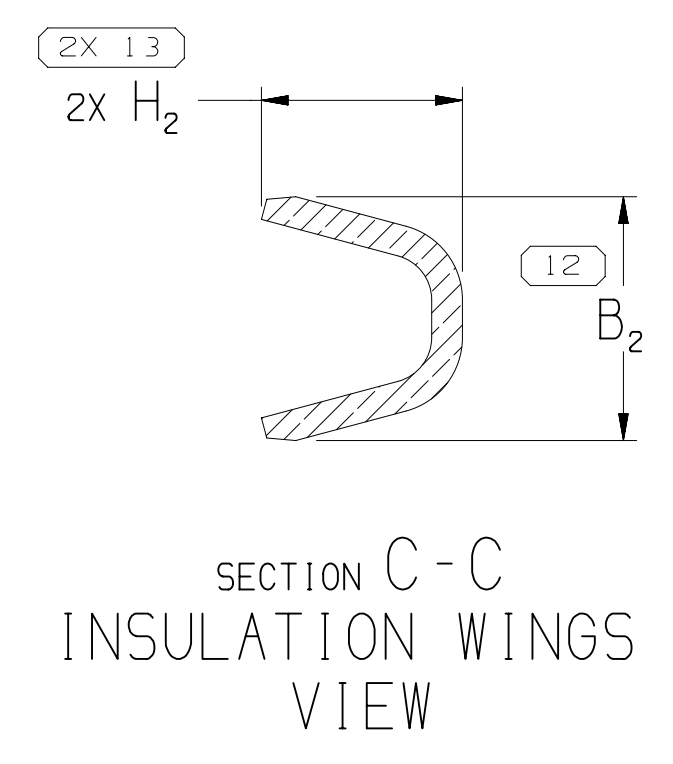
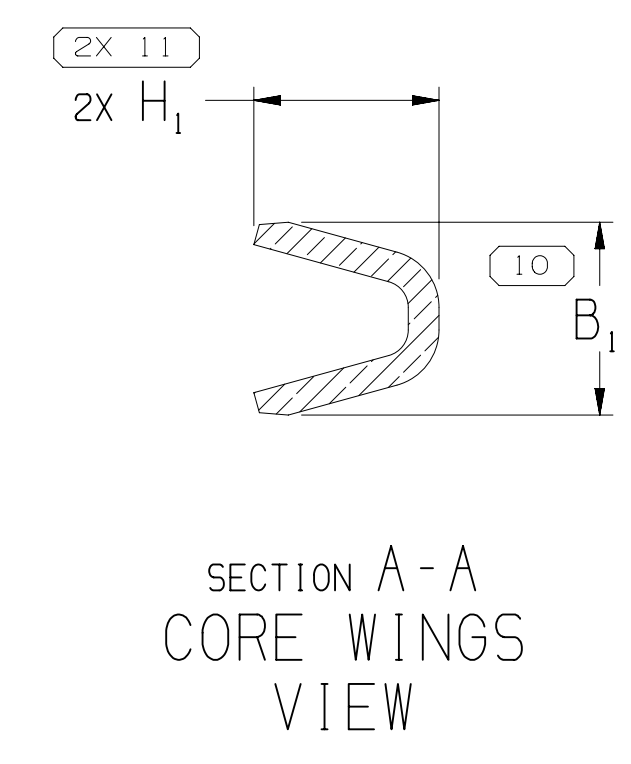
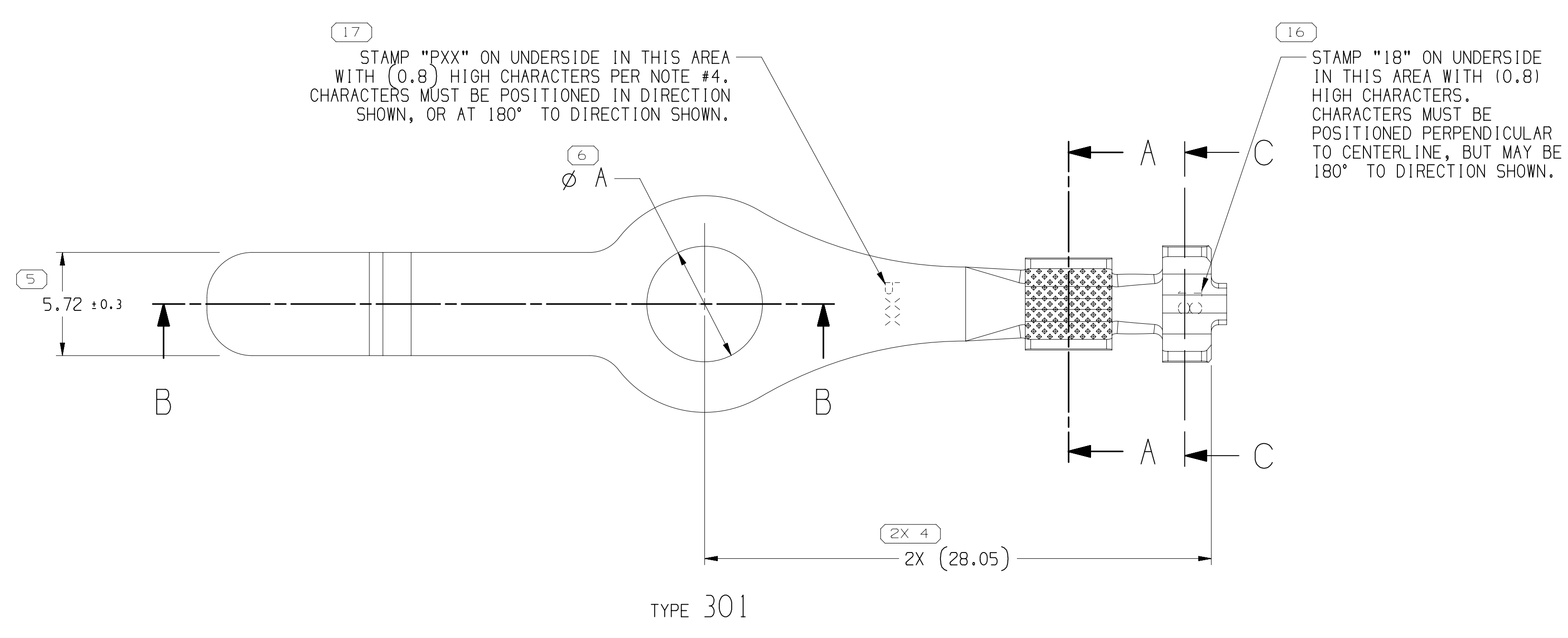
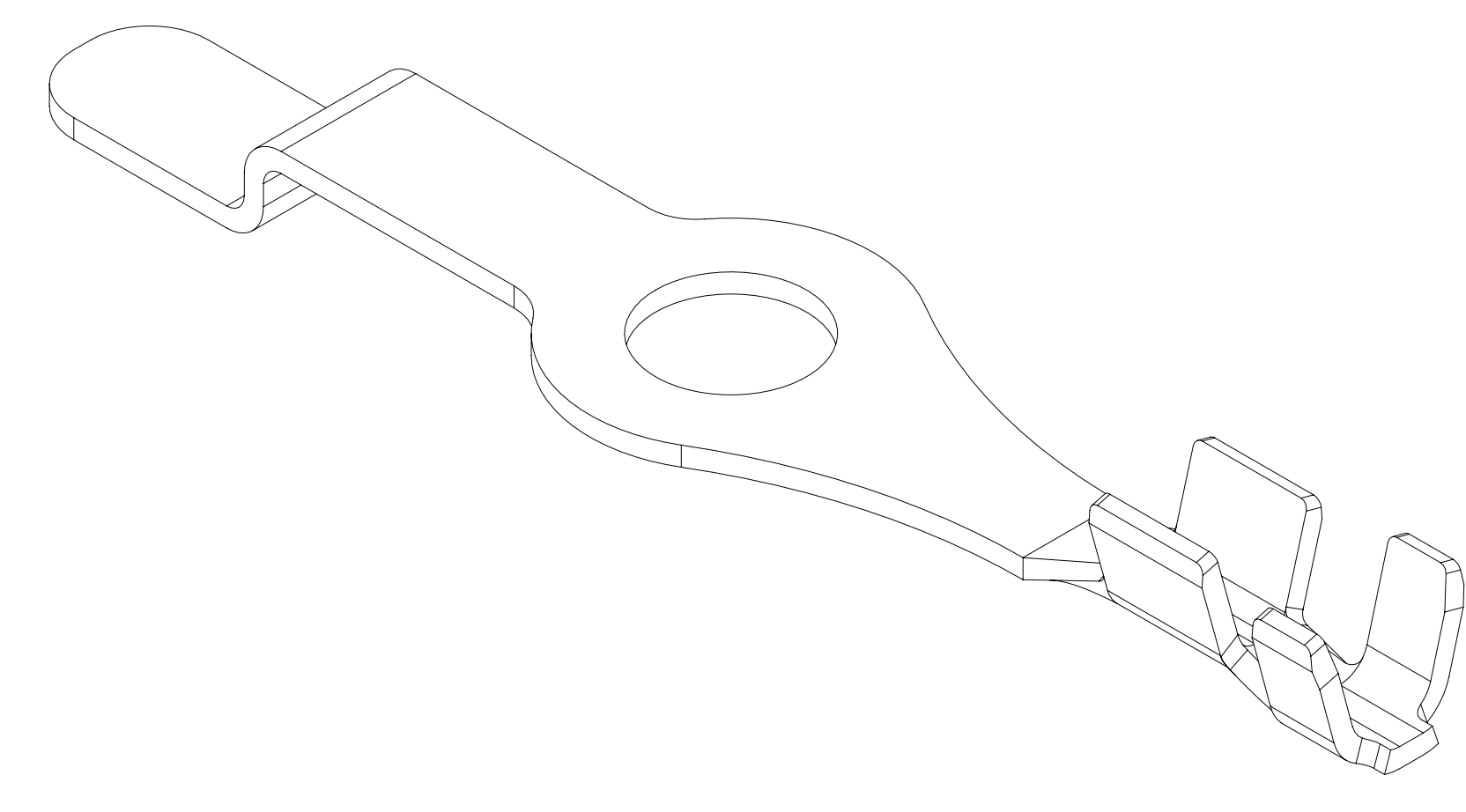


SYMBOL DEFINITION		MISSING SYMBOLS	
A DIMENSION WITHOUT AN INSPECTION REPORT SYMBOL DOES NOT REQUIRE INSPECTION. IT MAY BE CONTROLLED ON THE INDIVIDUAL COMPONENT DRAWING.	TOTAL NO OF INSPECTIONS REQUIRED	NO MISSING SYMBOL NUMBER	
	23		
	LAST NO. USED		
	17		

DWG STATUS		ZONE		REVISION HISTORY		AUTH		APV	
DATE	STG	REV	N/P	CHG					
150C19	R	01	-	-	35387462 - WAS LIMITED & SEPARATE DWG. "BEFORE COIN" WAS "BELOW COIN" ON DIMS #1-3. MAT'L SIZE WAS 0.813 X 66.44, DIM #5 WAS (5.72), DIM #7 WAS 17, DIM #8 WAS 27.55 & DIM #9 WAS 3.16, ADDED L1 & L2 TO CHART, DIMENSIONS #14-15 & INSPECTION SYMBOLS #16-17 AND REMOVED TAB POSITION INFO	444564	LXA	JAA	AGH
155E20	R	02	-	-	35387462 - UPDATED PART AVAILABILITY	55244B	JLL	COD	AGH



- NOTES
- UNLESS OTHERWISE SPECIFIED AND/OR INDICATED: DIMENSIONS ARE TO FACE OF VIEW SHOWN AND AUTOMATICALLY ROUNDED BY COMPUTER FOR INSPECTION (SEE MATH MODEL FOR PRECISE DIMENSIONS). FOR ALL OTHER DIMENSIONS NOT SHOWN BUT REQUIRED FOR TOOL BUILD, SEE MATH MODEL FOR PRECISE TOOL PATH DATA.
 - VISIBLE CRACKS ARE NOT PERMISSIBLE.
 - R 0.4 PERMISSIBLE ON ALL "SHARP" CORNERS.
 - "PXX" INDICATES "P" PLUS LAST TWO DIGITS OF MAKE DIE SERIES NUMBER (P01, P02, P03, ETC.).
 - PARTS ARE SYMMETRICAL ABOUT CENTERLINE.
 - TERMINAL SHALL BE FREE DEBRIS, RESIDUAL ABRASIVE MATERIALS, CORROSION PRODUCTS AND ANY EXTERNAL RESIDUES, NO LUBE EXCESS IS PERMISSIBLE.
 - PARTS MUST BE FREE OF BURRS, OR OTHER IMPERFECTIONS THAT AFFECT FUNCTION OR FIT OF PARTS.

6.4	1/4	M6
Ø A ±0.15/0	STANDARD	METRIC
CLOSE FIT HOLE	SCREW/STUD SIZE	

PART NO	REV	N/P	TYPE	MAT'L SIZE	MAT'L SPEC	SIZE (mm)	ID	M5	M6	M8	B1 ±0.3	B2 ±0.3	(H1)	(H2)	ØJ	K	L	L1 ±0.15	L2 ±0.15
35387462	01	AB	301	0.813 X 66.40	TIN PLATED COPPER ALLOY	0.75 - 1.00	18	-	X	-	5.1	6.45	4.9	5.32	13.6	9.45	1.5	4.8	2.7

6	PROCESS SENSITIVE DIMENSION		
DIMENSIONS ENCLOSED IN () INDICATE REFERENCE DIMENSIONS AND NO TOLERANCE LIMITS ARE ESTABLISHED			
FROM	TO	CHART	IS
0	12	>	12
TOLERANCE UNLESS OTHERWISE SPECIFIED			
±0.1	±0.2		
ANGULAR TOLERANCE ±2°			

PART DRAWING	
STYLE	D
VOLUME T0P1	DISTR CODE
UNLESS OTHERWISE SPECIFIED	
THIS DOCUMENT IS IN ACCORDANCE WITH ASME Y14.5-2009. SEE APTIV ENGINEERING DESIGN STANDARD 06-2017 FOR ISO 1101:2004 RECONCILIATION REQUIREMENTS.	
ALL DIMENSIONS ARE IN MILLIMETERS	
THIRD ANGLE PROJECTION	DO NOT USE MATH DATA

• APTIV •

CONNECTION SYSTEMS
WARREN, OH

COPYRIGHT 2019 APTIV. ALL RIGHTS RESERVED.

THIS DRAWING IS THE PROPERTY OF APTIV AND CONTAINS APTIV CONFIDENTIAL INFORMATION. THE REPRODUCTION, DISTRIBUTION AND UTILIZATION OF THIS DOCUMENT OR ITS RELATED CAD DATA, AS WELL AS COMMUNICATION OF ANY CONTENT TO OTHERS, WITHOUT EXPRESS AUTHORIZATION, IS PROHIBITED.

DR	DATE
APV01 XAVIER ALEJANDRO	150C19
APV02 J.S. ALVARADO	160C19
APV03 ANGELES GALLEGOS	170C19
APV04	
APV05	

SUBSTANCES OF CONCERN AND RECYCLED CONTENT PER APTIV 10949001

MATERIAL SEE CHART

DRAWING NAME
TAXI TERM RING SN

DRAWING NUMBER
35201848

SIZE	SCALE	FRAME NO	SHEET NO	STG	REV	N/P
A0	5:1	1 OF 1	3 OF 3	R	02	-