

CTS 1.2 SensoMate™ SERIES

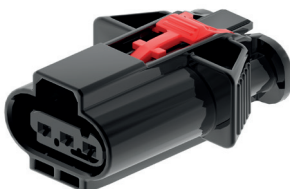
CTS 1.2 3W F short shroud CPA Type 2



CTS 1.2 3W F short shroud CPA Type 1



Male 3W



CTS 1.2 3W F long shroud



AVAILABLE CONFIGURATIONS

Cavity Count (ways)	2, 3, 4, 5, 6
Cavity Configurations (mm)	1.2
Genders	Female, Male (2-4W only)
Sealing Type	Cable Sealed
Centerline Spacing (mm)	4.0
Indexes	Varies, See Part List
TPA Type	Independent Secondary Lock (ISL)
CPA	Yes
Validation	GMW 3191; RNDS-B-00029 V.2 for short shroud; Others please consult us



APPLICATIONS

Chassis, Engine compartment, On-Engine-Mount, Severe Gearbox Applications, Sensors/Actuators

BENEFITS

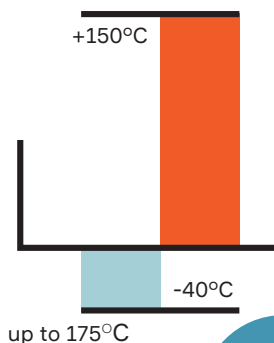
- VDA/USCAR 1.2 mm at 4 mm pitch interface compatible (universal)
- Industry standard 1.2 terminal cavity capability
- Short shroud design for small packaging footprint and long shroud design for easy mating device

FEATURES

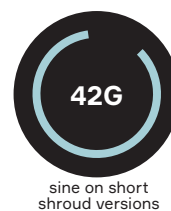
- One piece molded housing to ensure best in class sealing performance (short shroud version)
- Increased sealing performance through a unique 3 rib robust seal design (175°C version)
- Patented Smart Locking System version of the CPA to improve assembly cycle time (short shroud version)
- Compatible with wire dress back shells (short shroud version)



TEMPERATURE



VIBRATION



SEALING CLASS



See back page for representative part numbers and packaging dimensions.

About Aptiv

Aptiv is a global technology company that develops safer, greener and more connected solutions enabling a more sustainable future of mobility.

Visit aptiv.com



Cavity count	Blade size	Gender	Part number	Temperature Class	CPA	Shroud	Clip Slot	Dimensions (W x H x D)	Index	Other Indexes offered		
2	1.2	F	35126363	150°C	Type 1	Short	No	15.2 x 15 x 29.5	A	B, C		
3			35126369					19.2 x 15 x 29.5	A	B, C, D		
4			35126375					24.5 x 16.3 x 29.5	A	B, C, D, F, G		
5			35126383					28.5 x 16.3 x 29.5	A	B		
6			35020435					32.5 x 16.3 x 29.5	A	B, C, E		
2			35387382					Type 2	15.2 x 15 x 26	A	B, C	
3			35387389						19.2 x 15 x 26	A	B, C, D	
2			35449381	15.2 x 15 x 29.5	A				B, C			
3			35449383	Type 1	19.2 x 15 x 29.5			A	B, C, D			
4			35449387		24.5 x 16.3 x 29.5			A	B, C, D, F, G			
5			35449388		28.5 x 16.3 x 29.5			A	B			
6			35449389		32.5 x 16.3 x 29.5			A	B, C, E			
2			35747313		150°C			Yes	Long	No	25.2 x 14.6 x 32.8	A
3			35748524	26.2 x 14.6 x 32.8							A	B, C, D
4		35748643	30.2 x 15.6 x 32.8	A		B, C, D, E, F, G, H						
2		35747322	Yes	25.2 x 18.8 x 32.8		A	B, C, E, F					
3		35748527		25.2 x 18.8 x 32.8		A	B, C, D					
4		35748651		30.2 x 19.9 x 32.8		A	B, C, E, F, G					
2		35147458		150°C		Not Applicable	Yes				18.8 x 15.4 x 46.8	A
3		35148571	18.8 x 15.4 x 46.8								A	B, C, D
4	35147457	24.1 x 16.5 x 46.8	A								B, C, USCAR* E, F, G	

* USCAR interface on device

COMPATIBLE SEALS AND ACCESORIES

Type	Applicable Wire Size (mm²)	Color	Restraint Ring	Part Number
				
Cable Seal	0.13 - 0.35	Black	No	33120594
Cable Seal	0.35 - 0.5	Red	No	15327913
Cable Seal	0.5 - 1.0	Gray	No	15327918
Cable Seal	1.0 - 1.25	Yellow	No	15339412
Cavity Plug	NA	White	No	12198198
				
Cable Seal	0.13 - 0.35	Yellow	Yes	13887349
Cable Seal	0.5 - 1.0	Green	Yes	13887350
Cavity Plug	NA	Blue	Yes	13887353
Fixing clip for male housing slot**	NA	Black	NA	33119512
Back shell***	NA	-	NA	Consult us

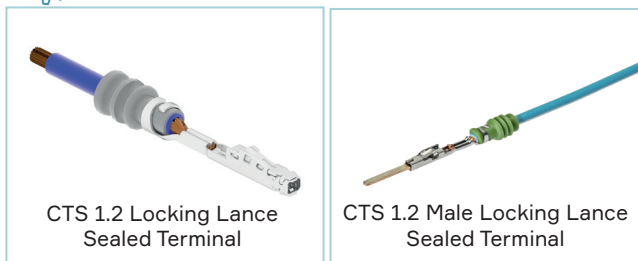
Other cable seals and cavity plugs available, please consult us

** USCAR 7 mm

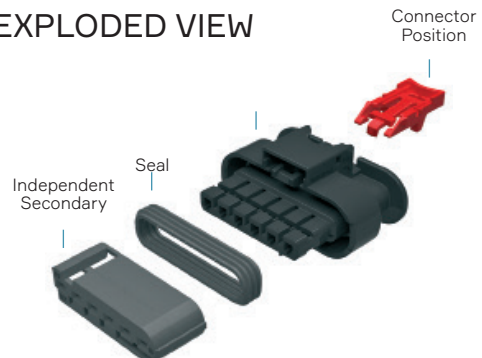
*** Lateral 90°, up/down 90°, 0°



COMPATIBLE WITH



EXPLODED VIEW



Part numbers, specifications, dimensions and performance data in this document are for general references only and are subject to change without notice. To verify product information, please contact an Aptiv representative.

CS-SP54-CTS-En0224