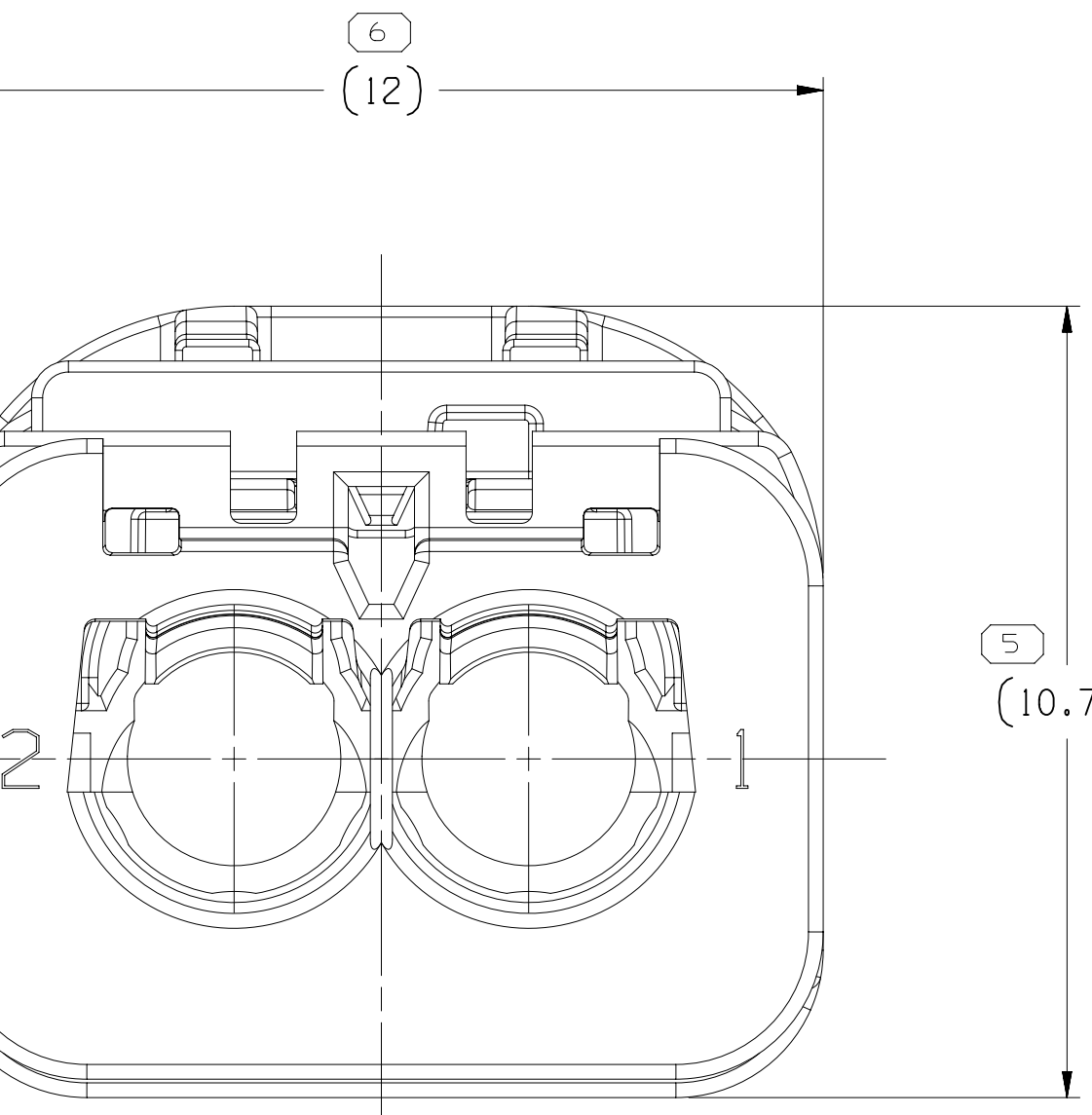
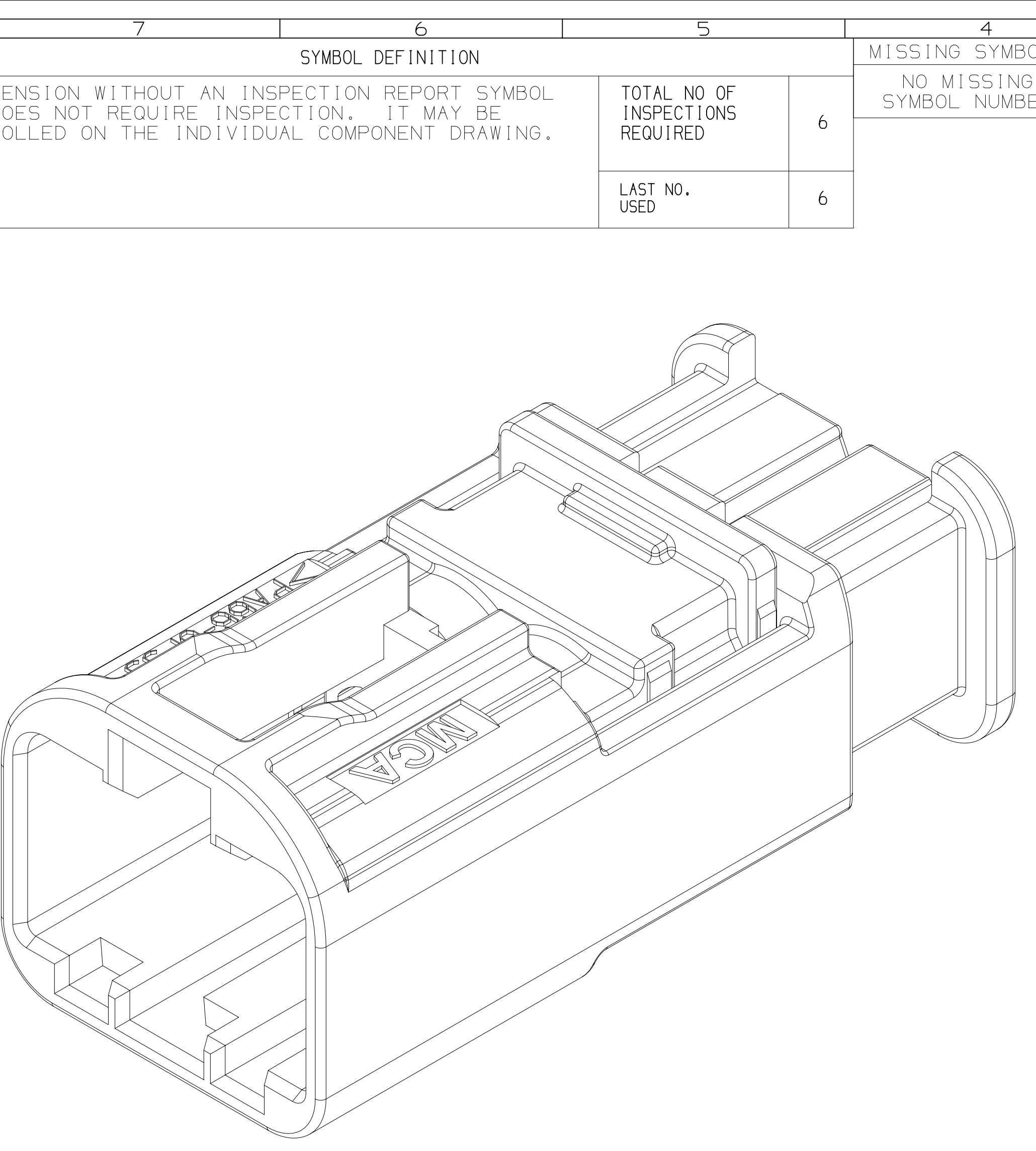
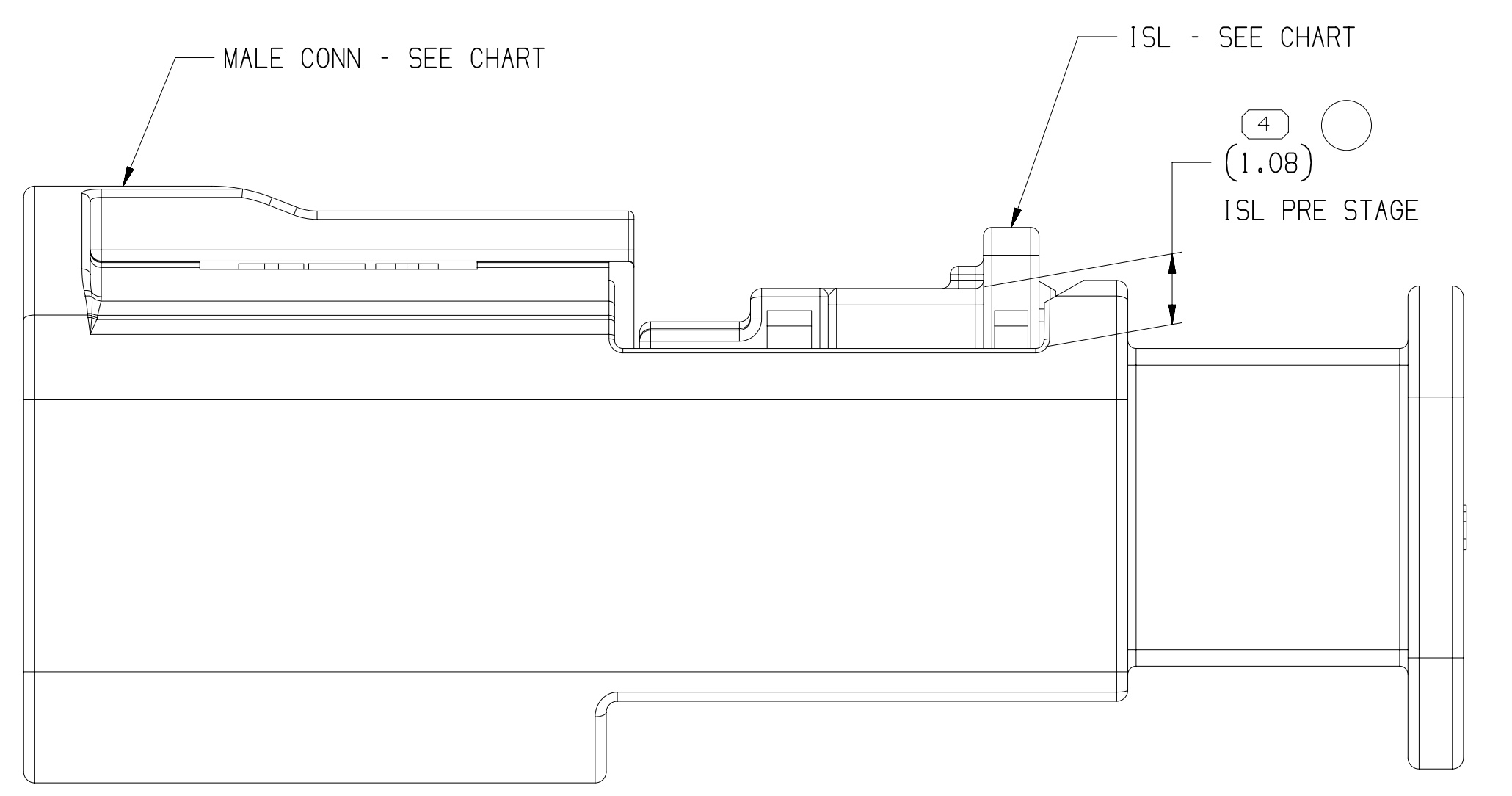
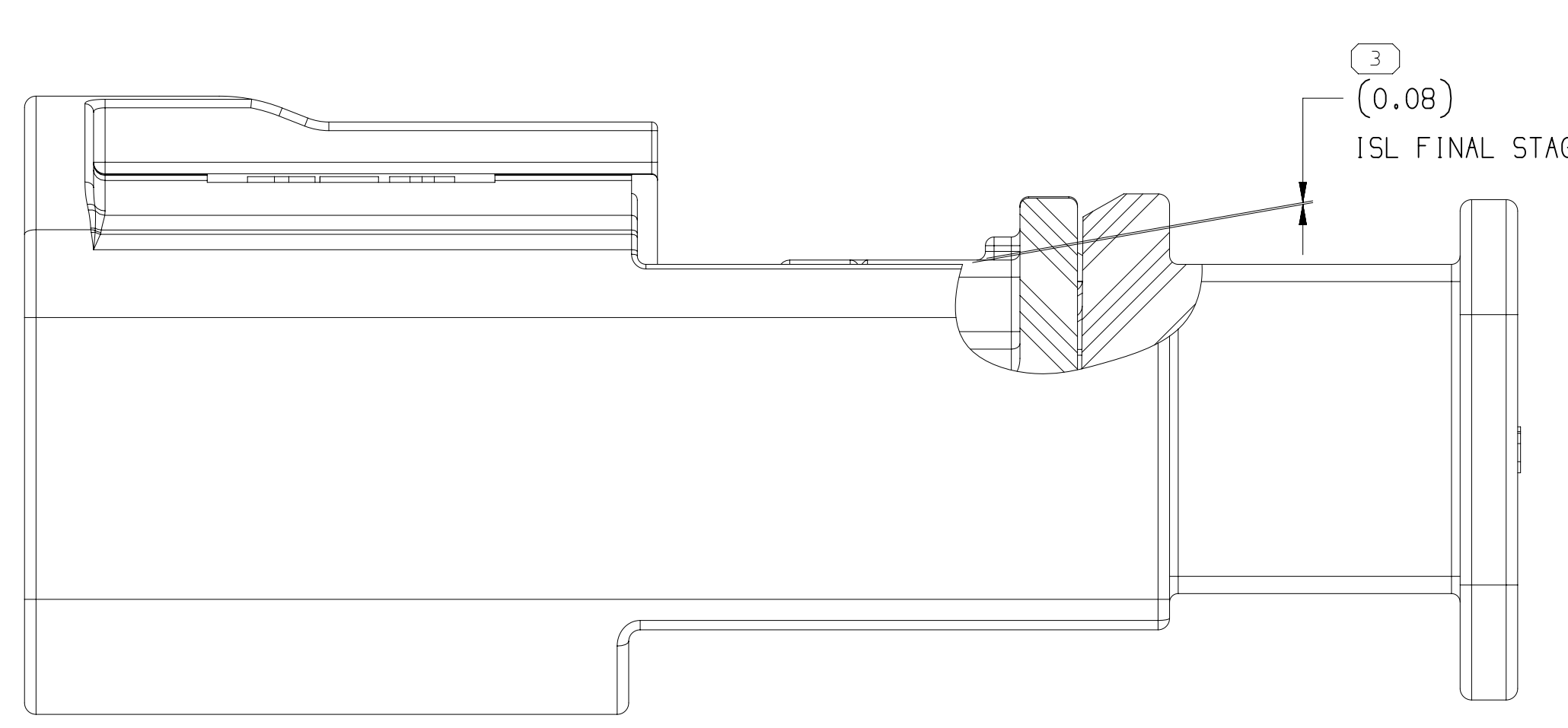
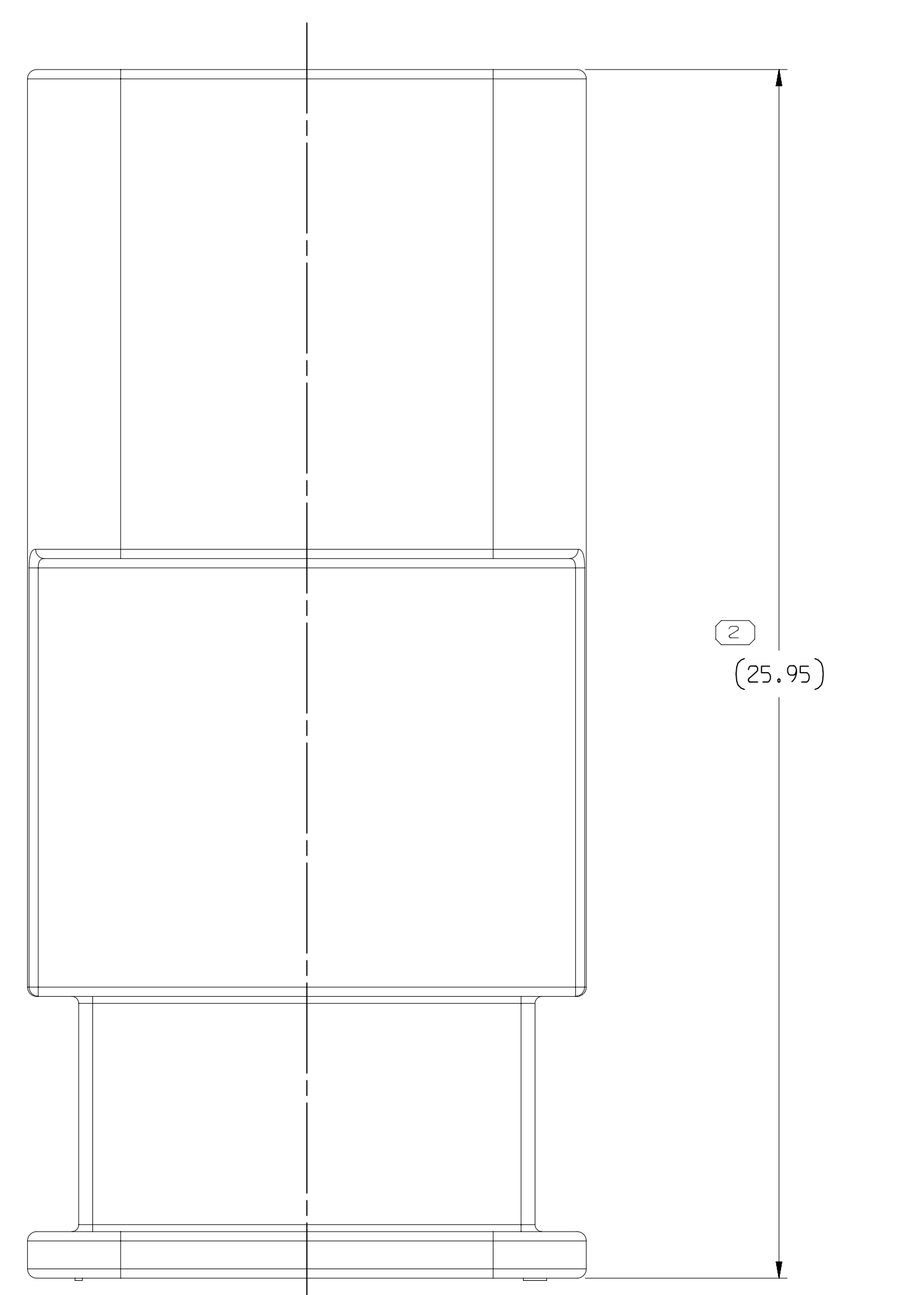
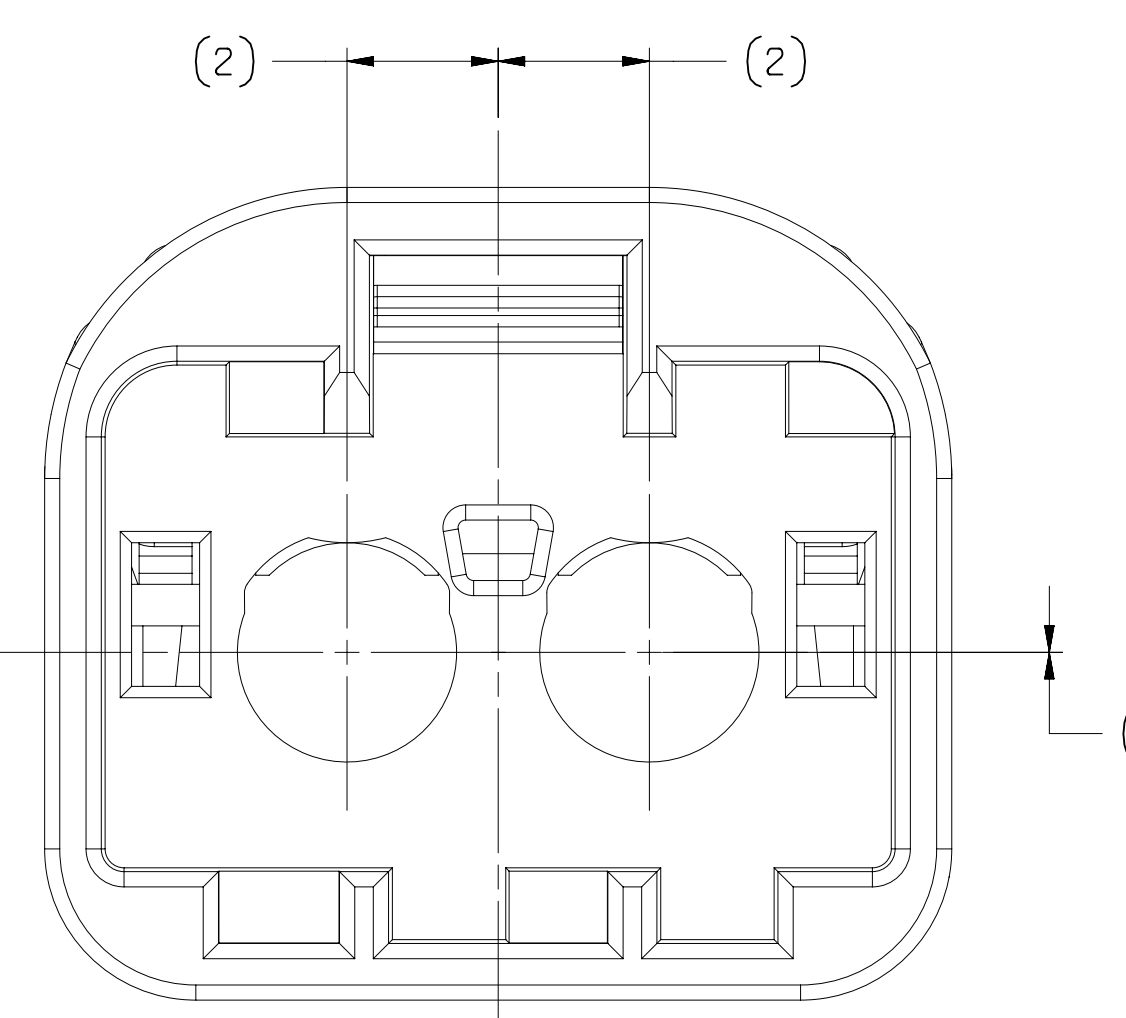
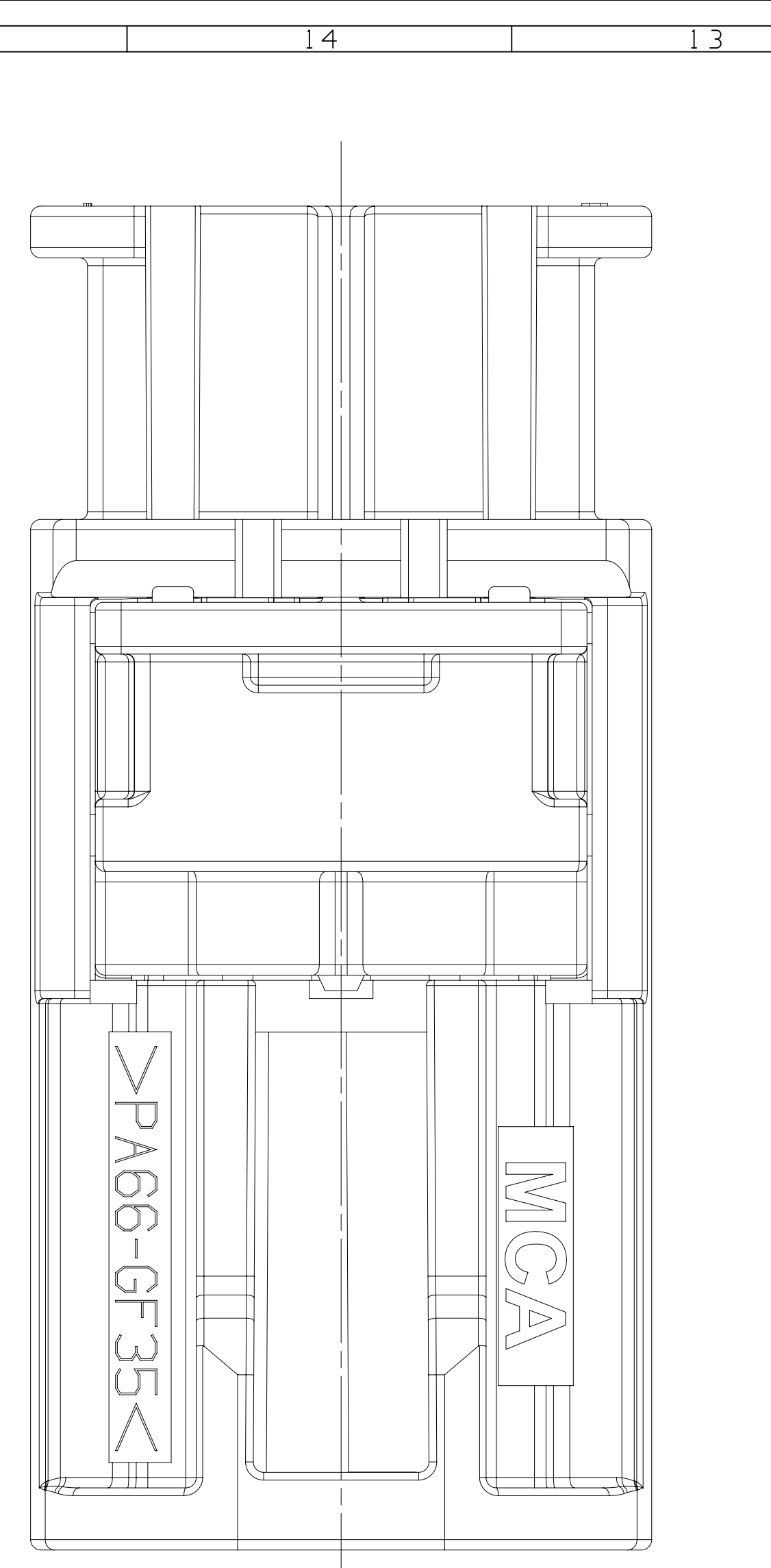
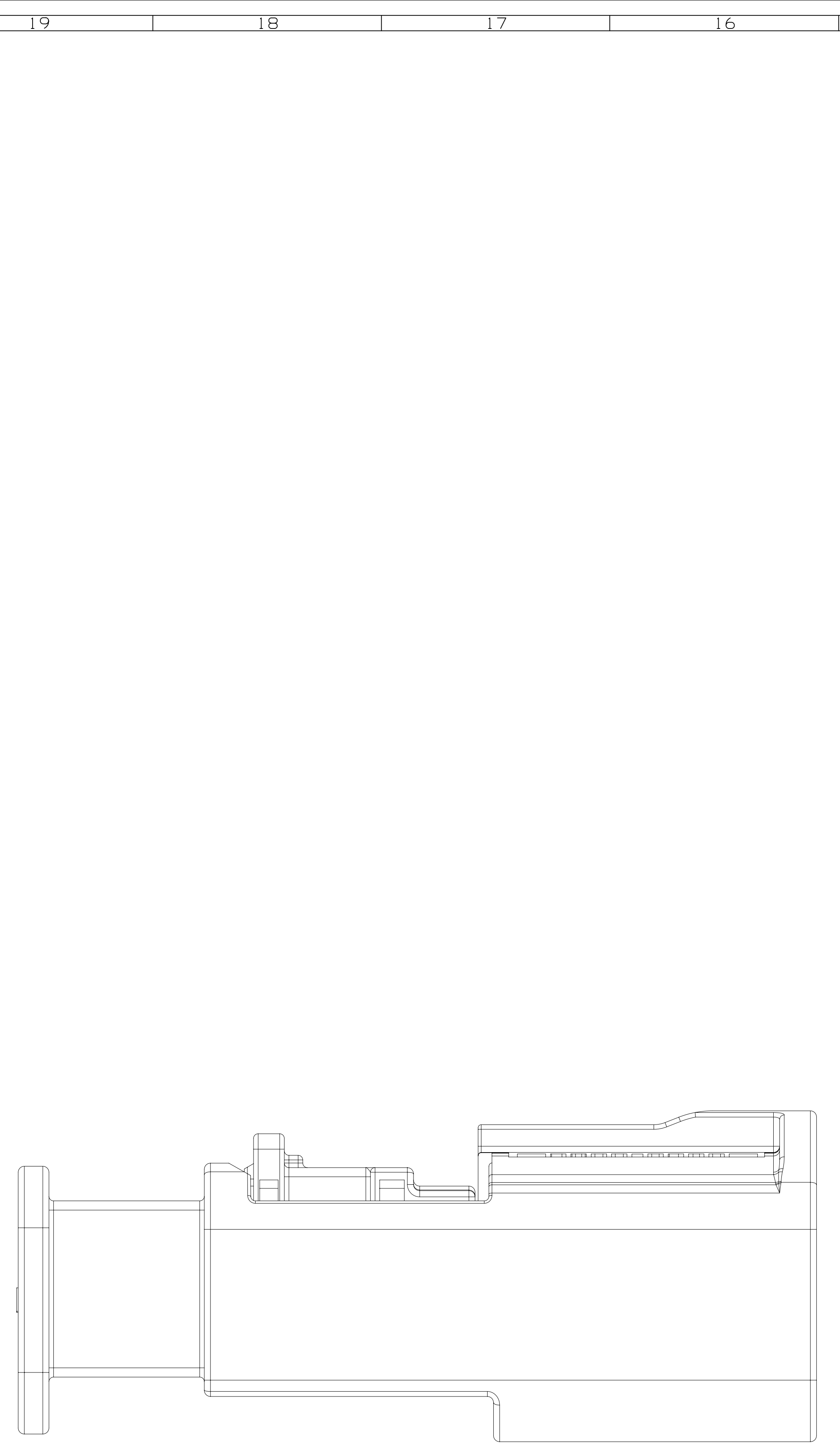


EXPLODED VIEW



- NOTES
- UNLESS OTHERWISE SPECIFIED AND/OR INDICATED:
DIMENSIONS ARE TO FACE OF VIEW SHOWN AND AUTOMATICALLY ROUNDED BY COMPUTER FOR INSPECTION (SEE MATH MODEL FOR PRECISE DIMENSIONS). FOR ALL OTHER DIMENSIONS NOT SHOWN BUT REQUIRED FOR TOOL BUILD, SEE MATH MODEL FOR PRECISE TOOL PATH DATA.
 - THIS PRODUCT IS NOT CATEGORIZED AS AN APPEARANCE ITEM. MINOR IMPERFECTIONS INCLUDING, BUT NOT LIMITED TO, FLOW MARKS, COLOR BLEMISHES, GATE VESTIGES, AND SOFT FLASH THAT DO NOT AFFECT THE FIT, FORM, OR FUNCTION OF THE PART ARE PERMISSIBLE PER ENP-4-3.CS.01.EN.
 - FOR APPLICATION DATA SEE THE INDIVIDUAL APPLICATION DRAWINGS.
 - DELIVERY CONDITION TO WIRE ASSEMBLY PLANT. VERIFY THE ISL IS IN THE PRE-STAGE POSITION.
 - BEFORE TERMINAL ASSEMBLY, VERIFY THE ISL IS IN THE PRE-STAGE POSITION ON THE CONNECTOR. IF NOT, RETURN THE ISL TO PRE-STAGE POSITION.
 - DELIVERY CONDITION TO VEHICLE ASSEMBLY PLANT. VERIFY THE ISL IS IN THE FINAL STAGE POSITION.

PART NO	REV	N/P	TYPE	CODE	CONNECTOR	ISL	CLIPSLOT
35521123	02	AA	107	Z	35521151	35522391	7 MM
35521148	02	AA	106	F	35521146	35522391	7 MM
35521162	02	AA	105	E	35521145	35522391	7 MM
35521166	02	AA	104	D	35521144	35522391	7 MM
35521165	02	AA	103	C	35521143	35522391	7 MM
35521164	02	AA	102	B	35521142	35522391	7 MM
35521163	02	AA	101	A	35521141	35522391	7 MM
35521162	02	AA	107	Z	35521140	35522391	NONE
35521152	02	AA	106	F	35521135	35522391	NONE
35521156	02	AA	105	E	35521134	35522391	NONE
35521155	02	AA	104	D	35521133	35522391	NONE
35521154	02	AA	103	C	35521132	35522391	NONE
35521153	02	AA	102	B	35521131	35522391	NONE
35477656	02	AA	101	A	35477655	35522391	NONE

DATE	REV	BY	CHKD	APPD
18NOV21	R	01	-	-
09MAY22	R	02	-	-
19AUG23	R	03	-	-

SYMBOL DEFINITION

A DIMENSION WITHOUT AN INSPECTION REPORT SYMBOL DOES NOT REQUIRE INSPECTION. IT MAY BE CONTROLLED ON THE INDIVIDUAL COMPONENT DRAWING.

TOTAL NO. OF INSPECTIONS REQUIRED	6
LAST NO. USED	6

MISSING SYMBOLS

NO MISSING SYMBOL NUMBER

DATE

18NOV21

09MAY22

19AUG23

REV

01

02

03

BY

APPROVED

ZONE

ALL PARTS - RELEASED PART DRAWING

ALL PARTS - REVISED GRAPHICS

REVISED DIM #4 & ADDED CODE TO CHART

REVISION HISTORY

551875 VS KV [D.5]

557367 VS KV [D.5]

561407 RV RAK[D.5]

Auth

OR

APPROVED

CONNECTION SYSTEMS

COMPANY, CHINA

RIGHTS RESERVED

THIS DRAWING IS THE PROPERTY OF APTIV AND CONTAINS APTIV'S CONFIDENTIAL INFORMATION. NO REPRODUCTION, DISTRIBUTION AND CIRCULATION OF THIS DOCUMENT OR ITS CONTENTS TO ANY PARTY, AS WELL AS COMMUNICATION OF ANY CONTENTS TO OTHERS WITHOUT EXPRESS AUTHORIZATION, IS PROHIBITED.

UNLESS OTHERWISE SPECIFIED

ALL DIMENSIONS ARE IN MILLIMETERS

REFERENCE

THIRD ANGLE PROJECTION

DO NOT SCALE

USE MATH DATA

APPROVED

DATE

18NOV21

09MAY22

19AUG23

REV

01

02

03

BY

APPROVED

35511939

18NOV21

09MAY22

19AUG23

REV

01

02

03

BY

APPROVED

32211939