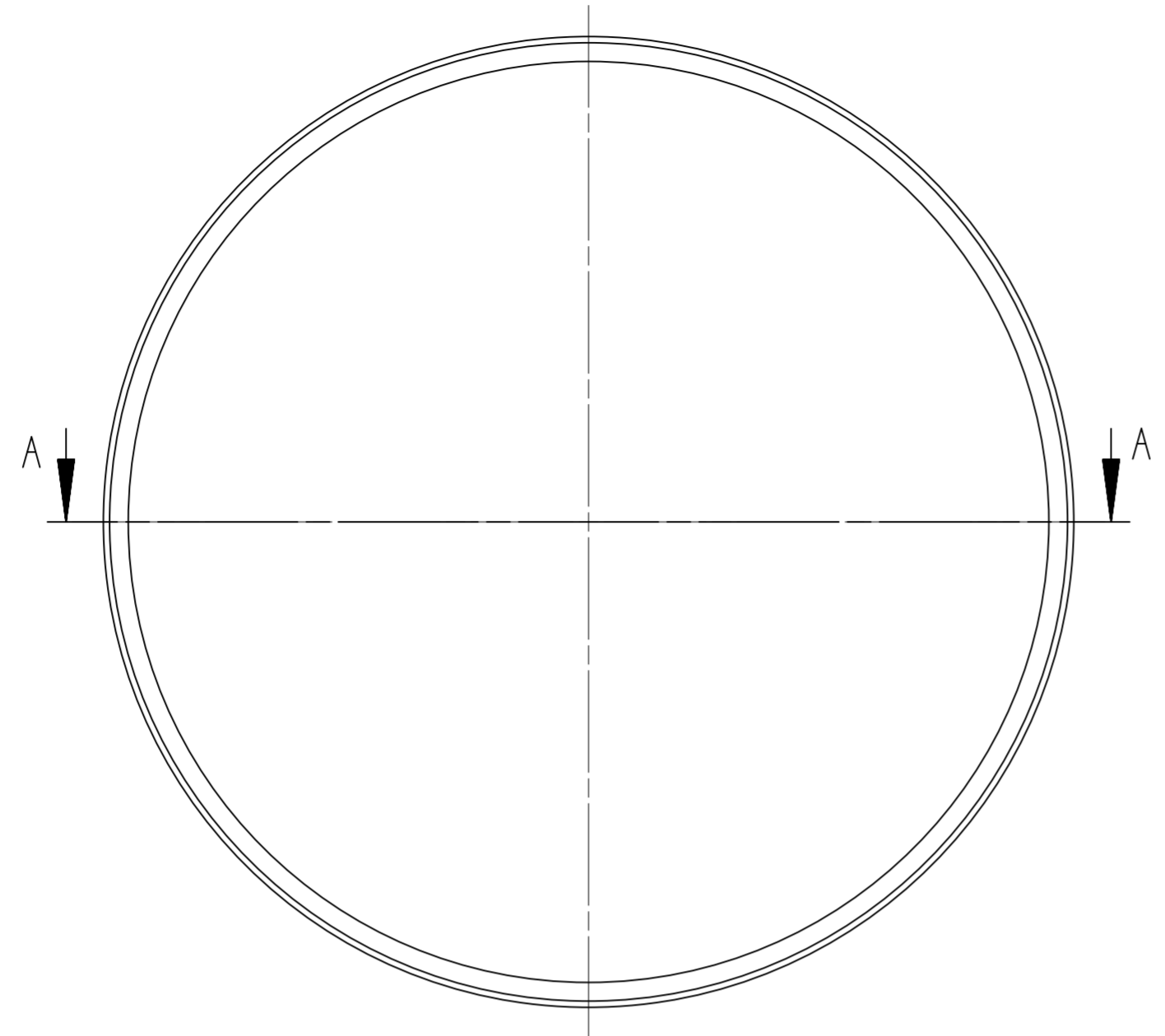
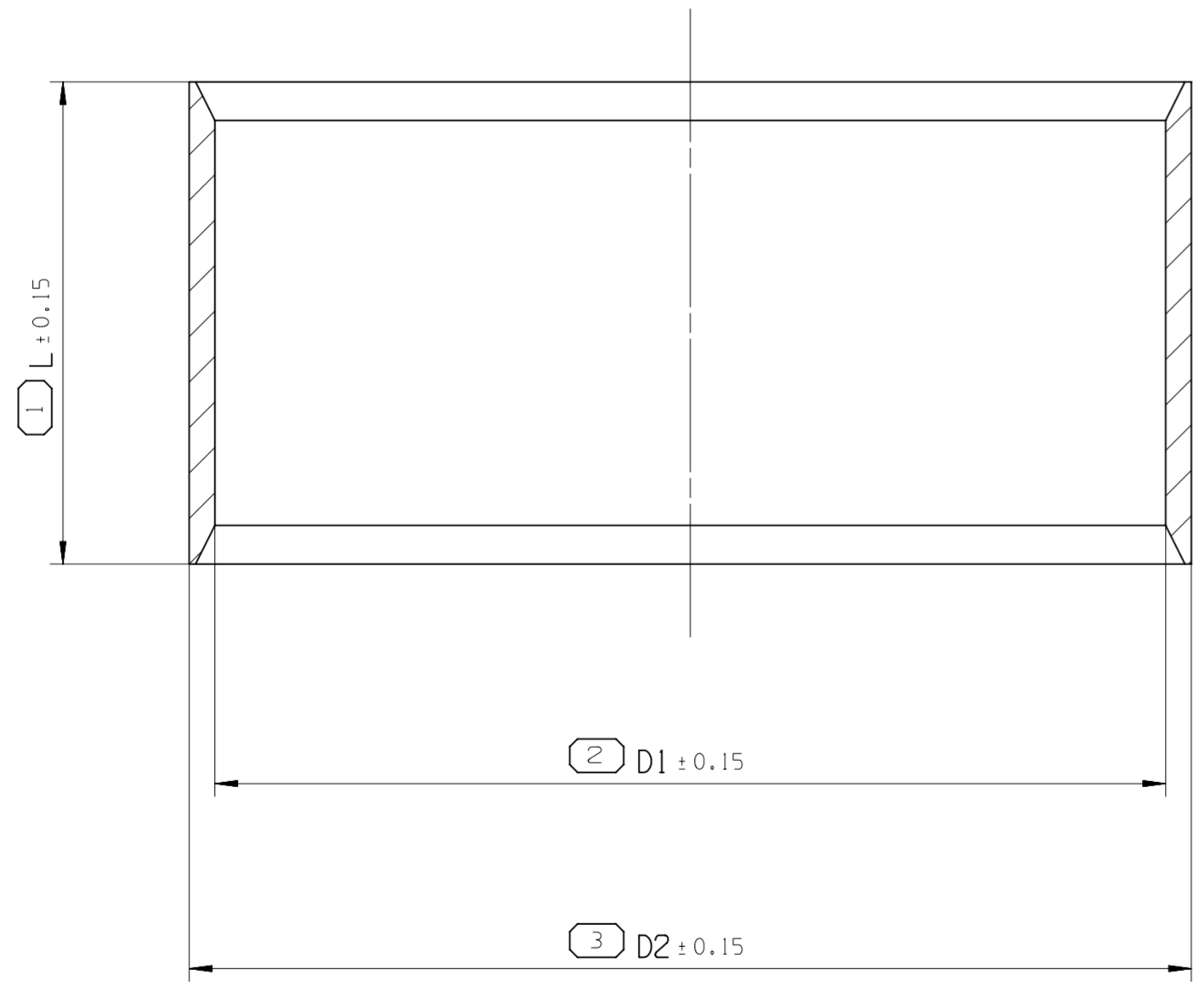


ASSOCIATED PARTS			
N°	DESCRIPTION	CODING	APTIV PN
		CODE 2	35084602
2	PLUG 800 2W	-	35098453
3	PLUG 890 SW	CODE 1	35254366

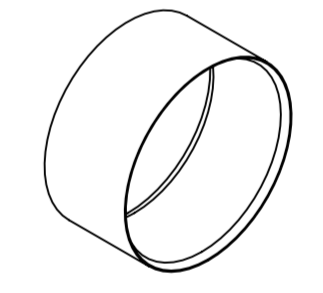
DWG STATUS		ZONE		REVISION HISTORY		AUTH	DR	APVD 1	APVD 2
DATE	STG	REV	N/P	CHG					
19AP19	R	01	-		INITIAL RELEASE		P.K.S	E.LAM	J.FAB



SECTION A - A



3D VIEW
SCALE 2:1



• APTIV •

CONNECTION SYSTEMS
Chennai, India

COPYRIGHT 2019 APTIV. ALL RIGHTS RESERVED.

THIS DRAWING IS THE PROPERTY OF APTIV AND CONTAINS APTIV CONFIDENTIAL INFORMATION. THE REPRODUCTION, DISTRIBUTION AND UTILIZATION OF THIS DOCUMENT OR ITS RELATED CAD MATH DATA, AS WELL AS COMMUNICATION OF ANY CONTENT TO OTHERS, WITHOUT EXPRESS AUTHORIZATION, IS PROHIBITED.

CE PLAN EST LE PROPRIETE DE DELPHI CORPORATION ET CONTIENT DES INFORMATIONS DELPHI CONFIDENTIELLES. LA REPRODUCTION, LA DISTRIBUTION ET L'UTILISATION DE CE DOCUMENT OU DE SES DONNEES MATHÉMATIQUES CAO, AINSI QUE LA COMMUNICATION DE TOUT CONTENU À AUTRUI, SANS AUTORISATION EXPRESSE EST INTERDITE.

	DATE
DR PRAVEEN KUMAR.S	19AP19
APVD1 E.LAM	19AP19
APVD2 M.VENARD	19AP19
APVD3 J.FABRE	19AP19
APVD4	
APVD5	

SUBSTANCES OF CONCERN AND RECYCLED CONTENT PER APTIV 10949001
MATIÈRES PROSCRITES ET CONTENU RECYCLABLE SEI0N DELPHI 10949001

MATERIAL
SEE TABLE

DRAWING NAME
OUTER FERRULE
35082414-CUS02

DRAWING NUMBER
35082414

SIZE	SCALE	FRAME NO	SHEET NO	STG	REV	N/P
A1	10:1	1 OF 1	1 OF 1	R	01	-

DWG TYP PART DRAWING	DISTR CODE D
WEIGHT (GR) 1.20	
VOLUME (CM³) 0.135	
ROUTING	

UNLESS OTHERWISE SPECIFIED

GENERAL TOLERANCES ACCORDING TO:
SEE CHART

GD&T ACCORDING TO:
ISO 1101

REFERENCE

FIRST ANGLE PROJECTION

DO NOT SCALE
USE MATH DATA

A LINE DRAWN THROUGH A PART NUMBER INDICATES THAT PHYSICAL PARTS ARE NOT AVAILABLE FOR ORDERING.

PART NUMBERS THAT DO NOT HAVE A LINE PRESENT INDICATE THAT PHYSICAL PARTS ARE AVAILABLE FOR ORDERING.

CONTACT APTIV SALES TO ASSURE AVAILABILITY OF PARTS.

DIMENSIONAL RANGE (MM)	CHART	D
FROM 0	12	> 12

TOLERANCE UNLESS OTHERWISE SPECIFIED
±0.1 ±0.2

ANGULAR TOLERANCE ±2°

	WIRE SECTION		MATERIAL
	35-50mm²	50-70mm²	
APTIV PN	33214221	35082415	COPPER ALLOY
D1	13.5	14.8	
D2	14.3	15.6	
L	8.5	7.5	

<input type="checkbox"/> DIM TO CHECK	<input type="checkbox"/> DIM FOR HELP	<input type="checkbox"/> THEORETIC DIM
---------------------------------------	---------------------------------------	--