
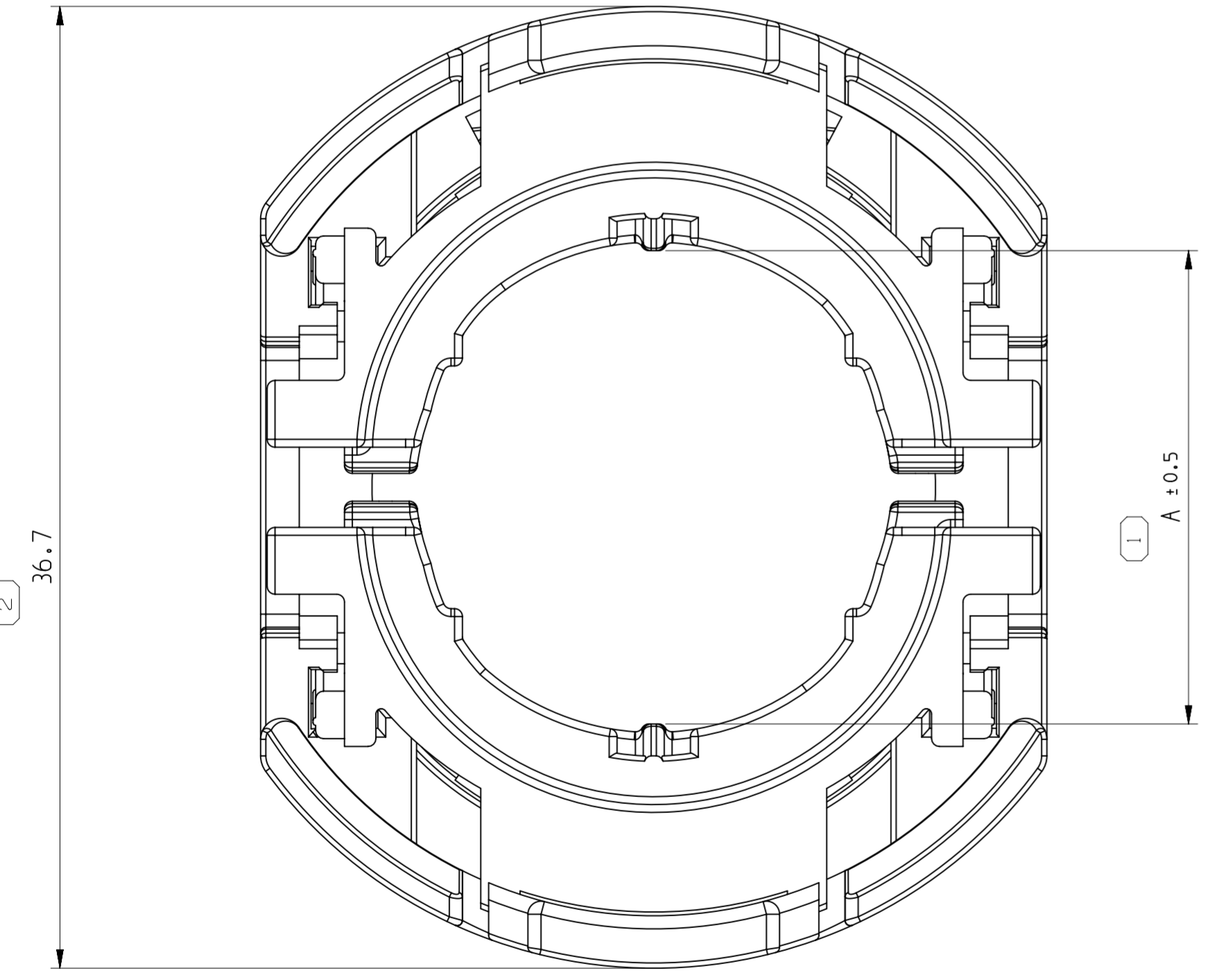
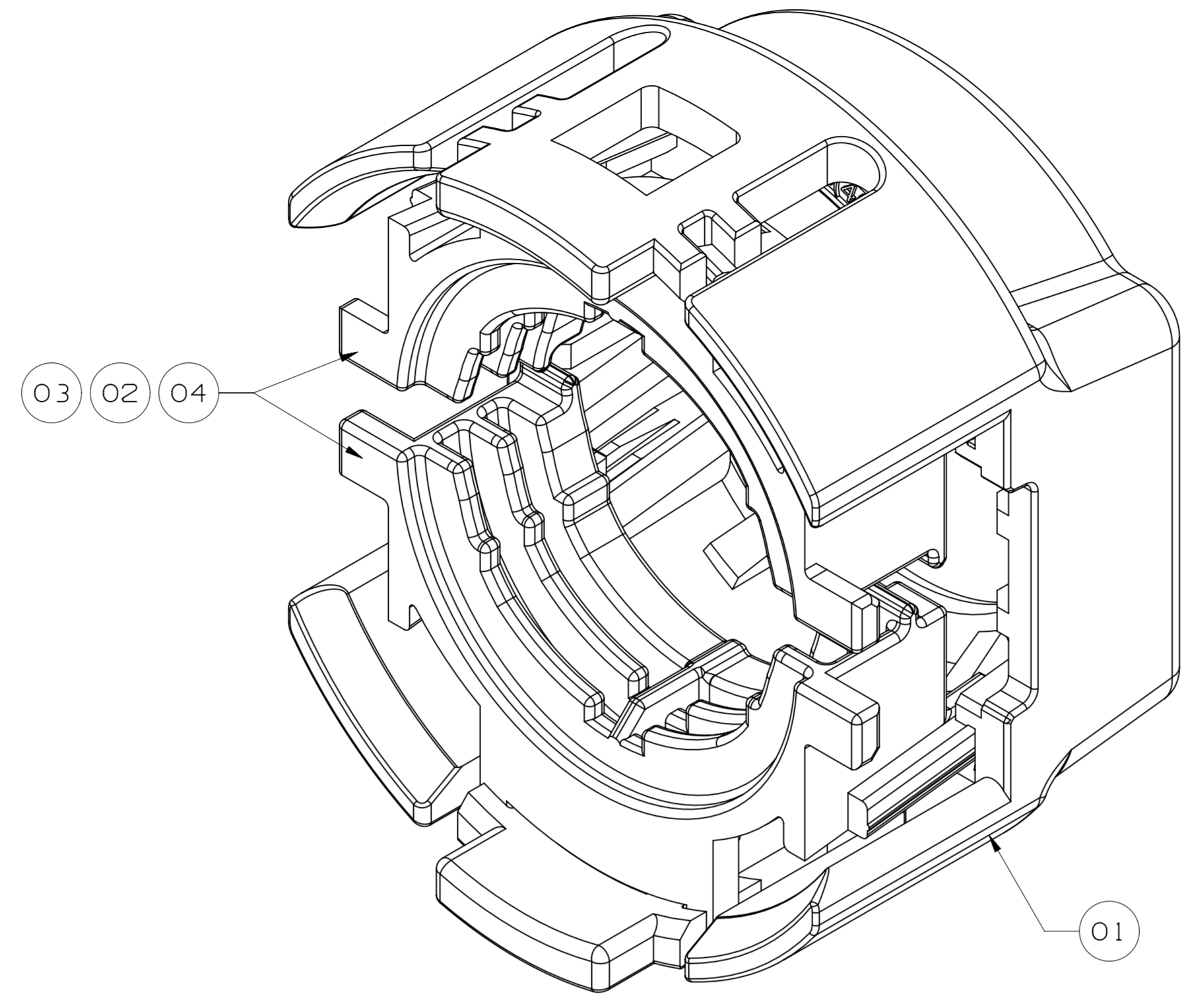
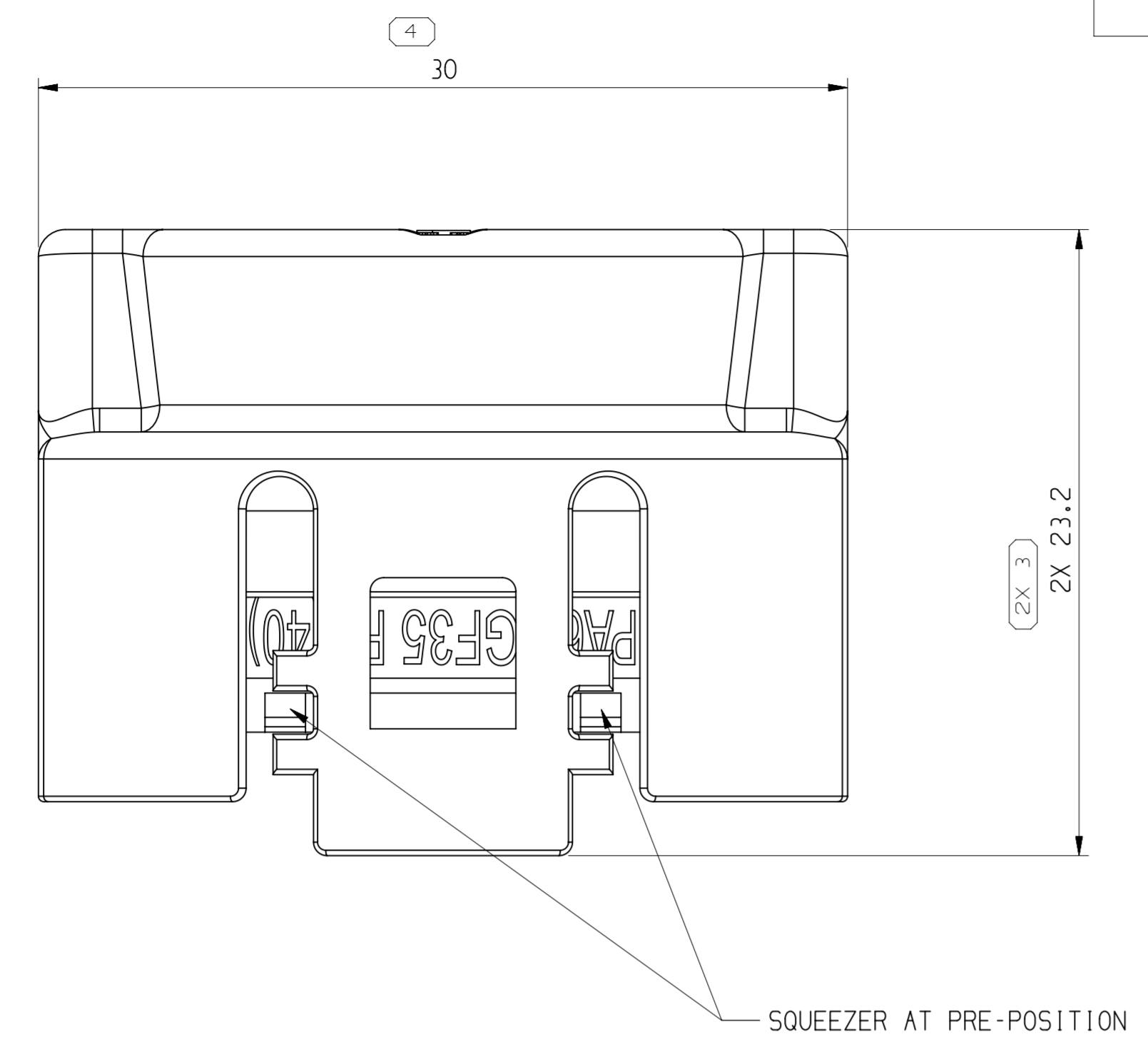


SYMBOL DEFINITION		TOTAL NO OF INSPECTIONS REQUIRED	
A DIMENSION WITHOUT AN INSPECTION REPORT SYMBOL  DOES NOT REQUIRE INSPECTION. IT MAY BE CONTROLLED ON THE INDIVIDUAL COMPONENT DRAWING.		5	
	LAST NO. USED	4	

MISSING SYMBOLS		DWG STATUS					REVISION HISTORY		AUTH	DR	APVD 1	APVD 2
NO MISSING SYMBOL NUMBER	DATE	STG	REV	N/P	CHG	ZONE						
	090C19	R	01	-	-		CREATED PART DRAWING		444644		LG	WZM



- NOTES
- UNLESS OTHERWISE SPECIFIED AND/OR INDICATED:
DIMENSIONS ARE TO FACE OF VIEW SHOWN AND AUTOMATICALLY ROUNDED BY COMPUTER FOR INSPECTION (SEE MATH MODEL FOR PRECISE DIMENSIONS). FOR ALL OTHER DIMENSIONS NOT SHOWN BUT REQUIRED FOR TOOL BUILD, SEE MATH MODEL FOR PRECISE TOOL PATH DATA.
 - THE ACCEPT CABLE SHOULD BE FOLLOW SPEC. LV216
 - PARTS SHOWN ON THIS DRAWING USED IN LAYOUTS SHOWN ON TAXI DRAWING 35356930.
 - RAW MATERIAL OF ALL PLASTIC COMPONENTS MEET UL-V0.
 - THE RETENTION FORCE OF SQUEEZER AT PRE-POSITION MUST BE MIN. 80N.

POS	PART NUMBER	REV	DESCRIPTION	QTY	UOM	MATERIAL	COLOR	DIM "A"
	35347219	01	ASM STRAIN RELIEF FOR 50mm ²	-	-	-	-	15.66
01	35339351	-	STRAIN RELIEF COVER	1	NOS	POLYAMIDE BLEND	ORANGE	-
02	35347220	-	STRAIN RELIEF INNER PART FOR CABLE 50mm ²	2	NOS	POLYAMIDE BLEND	GREEN	-
	35339348	01	ASM STRAIN RELIEF FOR 70mm ²	-	-	-	-	18.06
01	35339351	-	STRAIN RELIEF COVER	1	NOS	POLYAMIDE BLEND	ORANGE	-
03	35339353	-	STRAIN RELIEF INNER PART FOR CABLE 70mm ²	2	NOS	POLYAMIDE BLEND	NATURAL	-
	35339349	01	ASM STRAIN RELIEF FOR 95mm ²	-	-	-	-	20.76
01	35339351	-	STRAIN RELIEF COVER	1	NOS	POLYAMIDE BLEND	ORANGE	-
04	35339354	-	STRAIN RELIEF INNER PART FOR CABLE 95mm ²	2	NOS	POLYAMIDE BLEND	RED	-

DIMENSIONAL RANGE (MM)		CHART M	
FROM	TO	>	>
> 0	> 6	> 30	> 70
> 6	> 30	> 70	> 120
> 30	> 70	> 120	> 160
> 70	> 120	> 160	> 200
> 120	> 160	> 200	> 250
> 160	> 200	> 250	> 315
> 200	> 250	> 315	> 400

TOLERANCE UNLESS OTHERWISE SPECIFIED

±0.1	±0.2	±0.3	±0.4	±0.45	±0.55	±0.7	±0.85	±1.05
------	------	------	------	-------	-------	------	-------	-------

ANGULAR TOLERANCE ±1°

LINE DRAWN THROUGH A PART NUMBER INDICATES THAT PHYSICAL PARTS ARE NOT AVAILABLE FOR ORDERING.

PART NUMBERS THAT DO NOT HAVE A LINE PRESENT INDICATE THAT PHYSICAL PARTS ARE AVAILABLE FOR ORDERING.

CONTACT APTIV SALES TO ASSURE AVAILABILITY OF PARTS.

DWG TYPE: PART DRAWING

STYLE: [Symbol]

VOLUME (CM³): [Symbol]

DISTR CODE: [Symbol]

UNLESS OTHERWISE SPECIFIED THIS DOCUMENT IS IN ACCORDANCE WITH ASME Y14.5-2009, SEE DELPHI ENGINEERING DESIGN STANDARD B6 2017 FOR ISO 1101:2004 RECONCILIATION REQUIREMENTS.

ALL DIMENSIONS ARE IN MILLIMETERS

THIRD ANGLE PROJECTION

DO NOT SCALE

USE MATH DATA

NX

• APTIV •

CONNECTION SYSTEMS

Chennai, India

COPYRIGHT 2019 APTIV. ALL RIGHTS RESERVED.

THIS DRAWING IS THE PROPERTY OF APTIV AND CONTAINS APTIV CONFIDENTIAL INFORMATION. THE REPRODUCTION, DISTRIBUTION AND UTILIZATION OF THIS DOCUMENT OR ITS RELATED CAD MATH DATA, AS WELL AS COMMUNICATION OF ANY CONTENT TO OTHERS, WITHOUT EXPRESS AUTHORIZATION, IS PROHIBITED.

DR	DATE
APVD1 LINK GAO	090C19
APVD2 WEZHENG MA	090C19
APVD3 TIMON YU	090C19
APVD4	
APVD5	

SUBSTANCES OF CONCERN AND RECYCLED CONTENT 10949001 10949001

MATERIAL: SEE TABLE

DRAWING NAME: TAXI LOCK STRAIN RLF

DRAWING NUMBER: 35339347

SIZE	SCALE	FRAME NO	SHEET NO	STG	REV	N/P
A1	5:1	1 OF 1	1 OF 1	R	01	-

Sheet: 35339347-CUS01-S01/01 Date: 09-Oct-19 Time: 18:19:35 Path: J:\10092019_1818_30parts.mcr