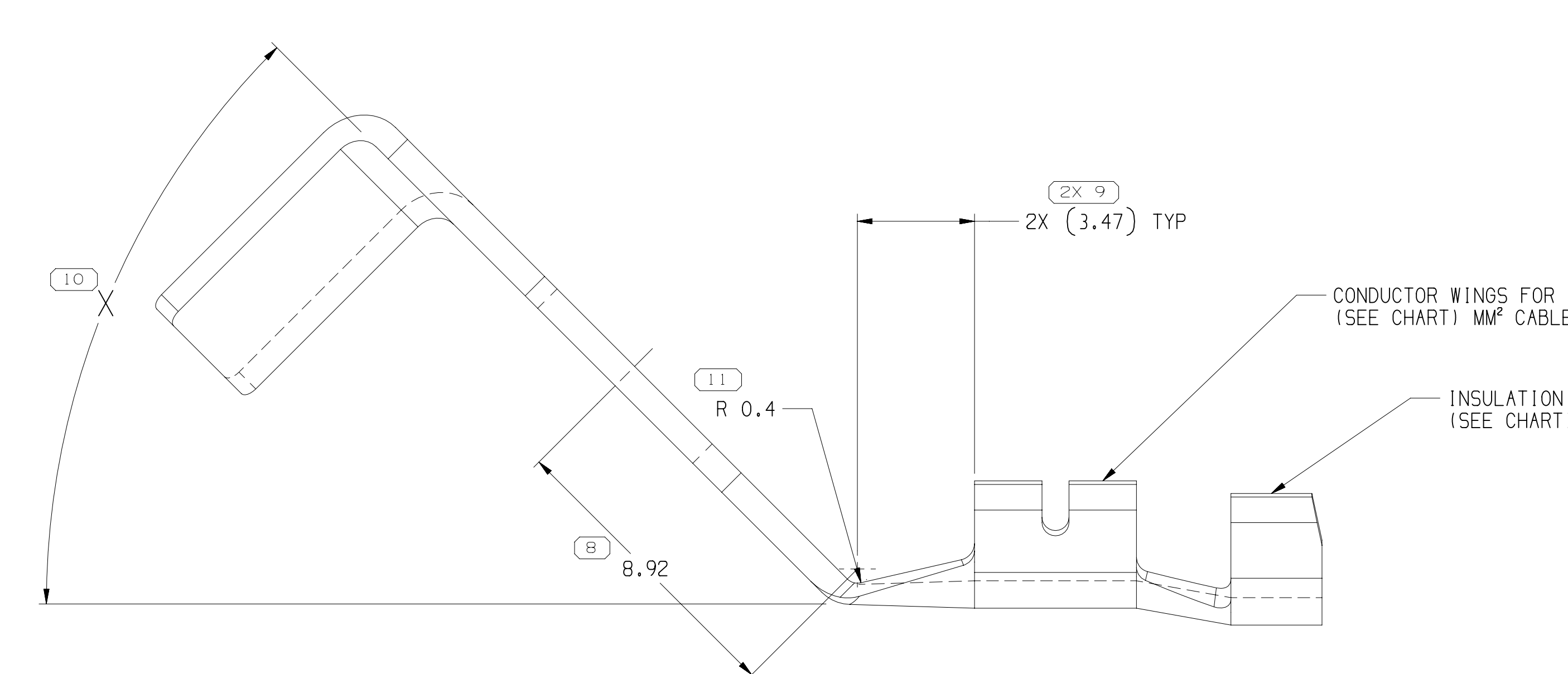
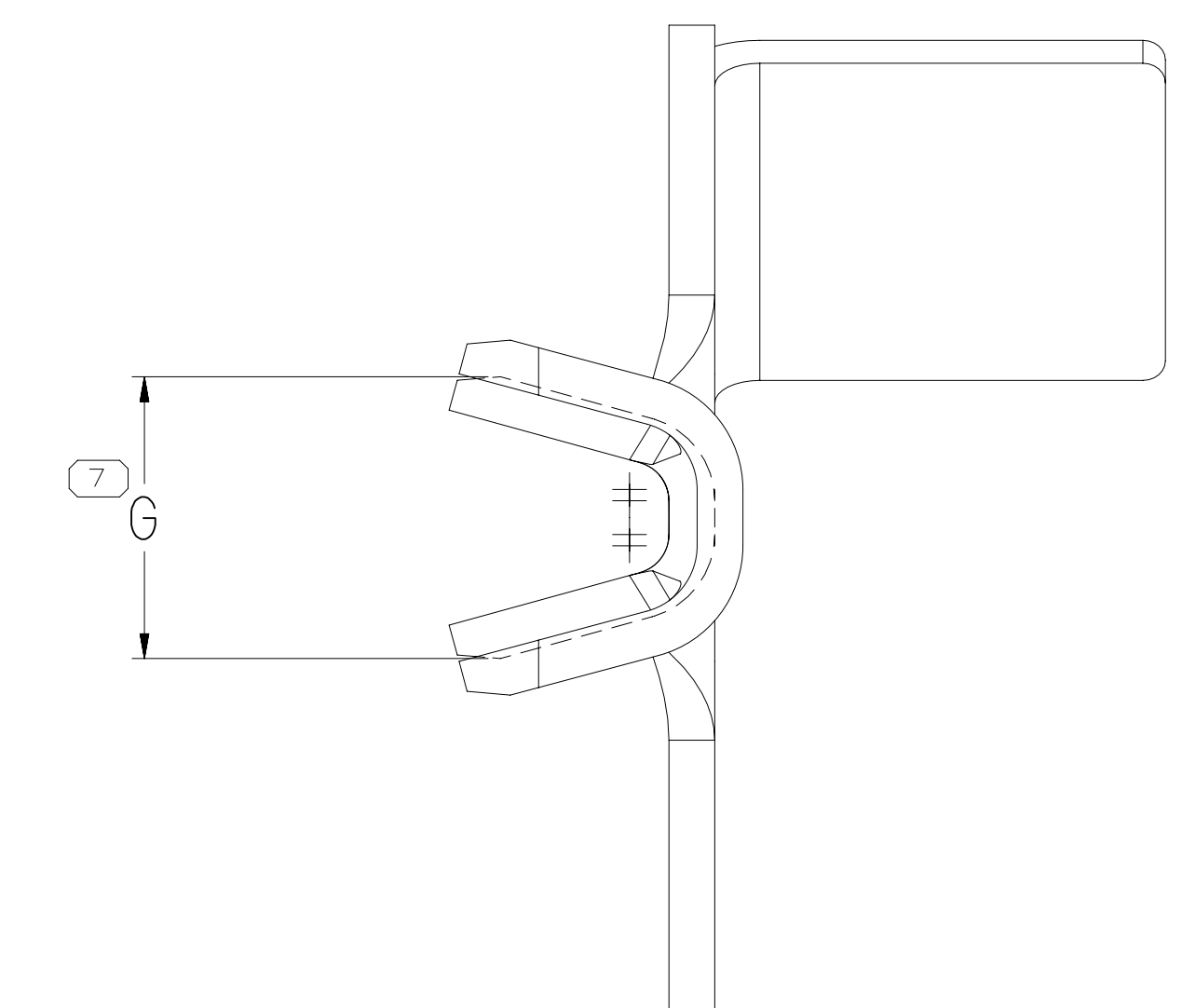
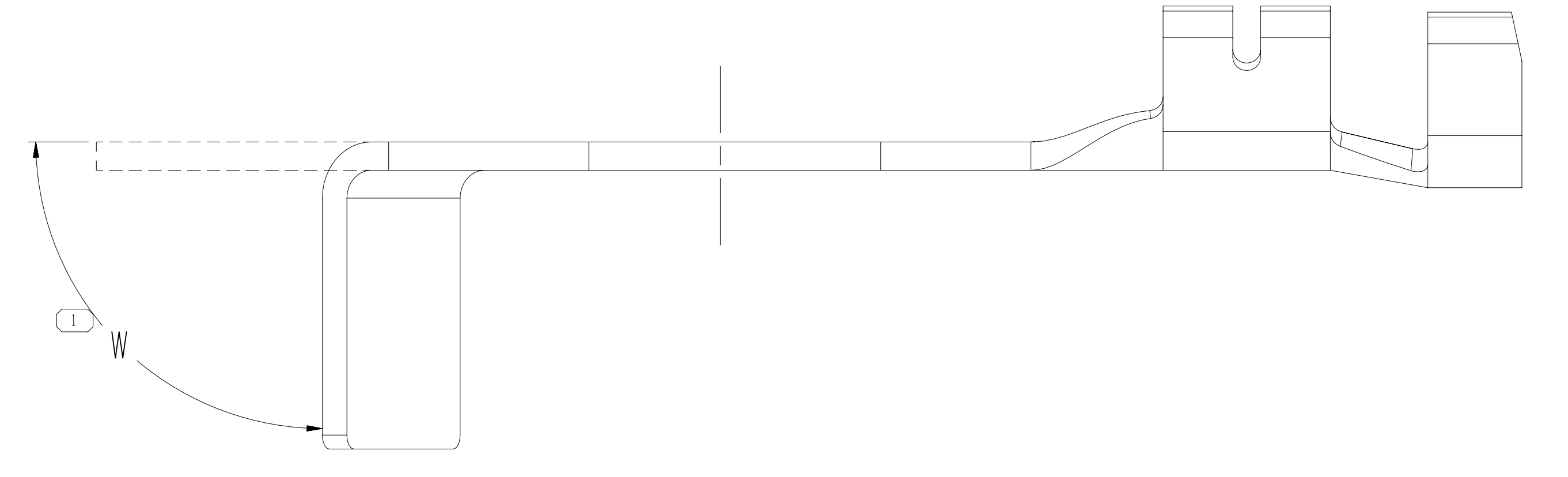
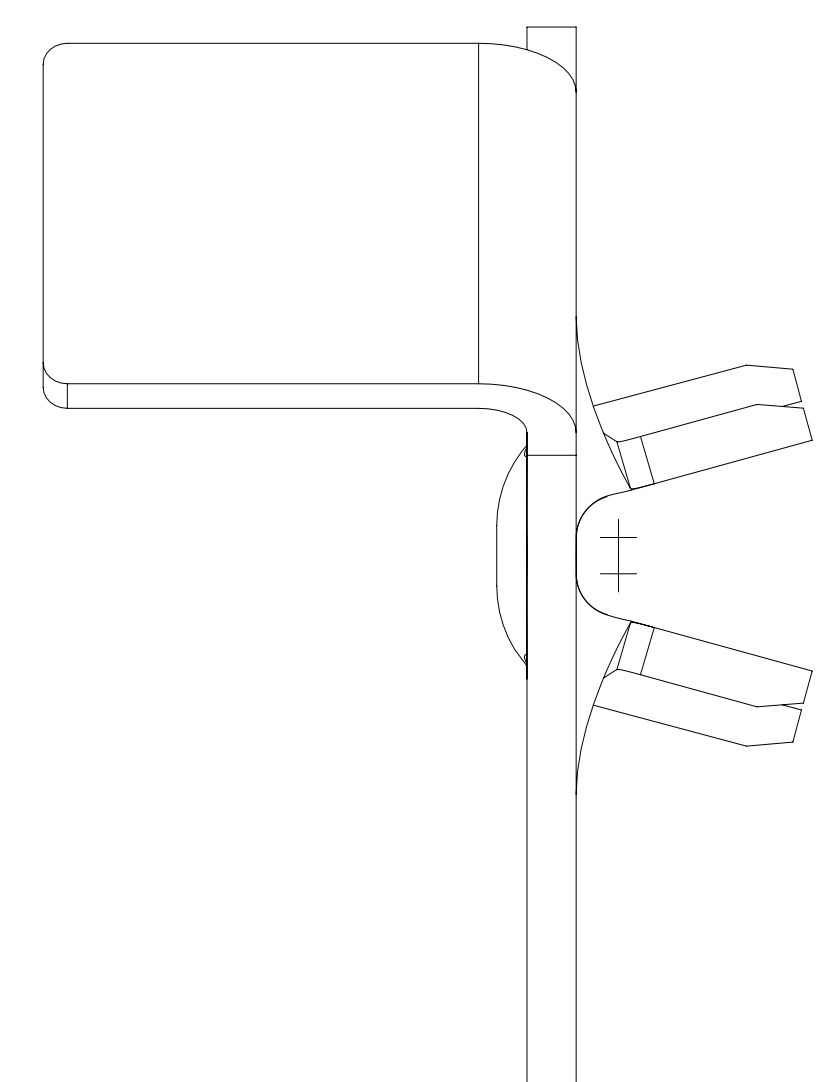
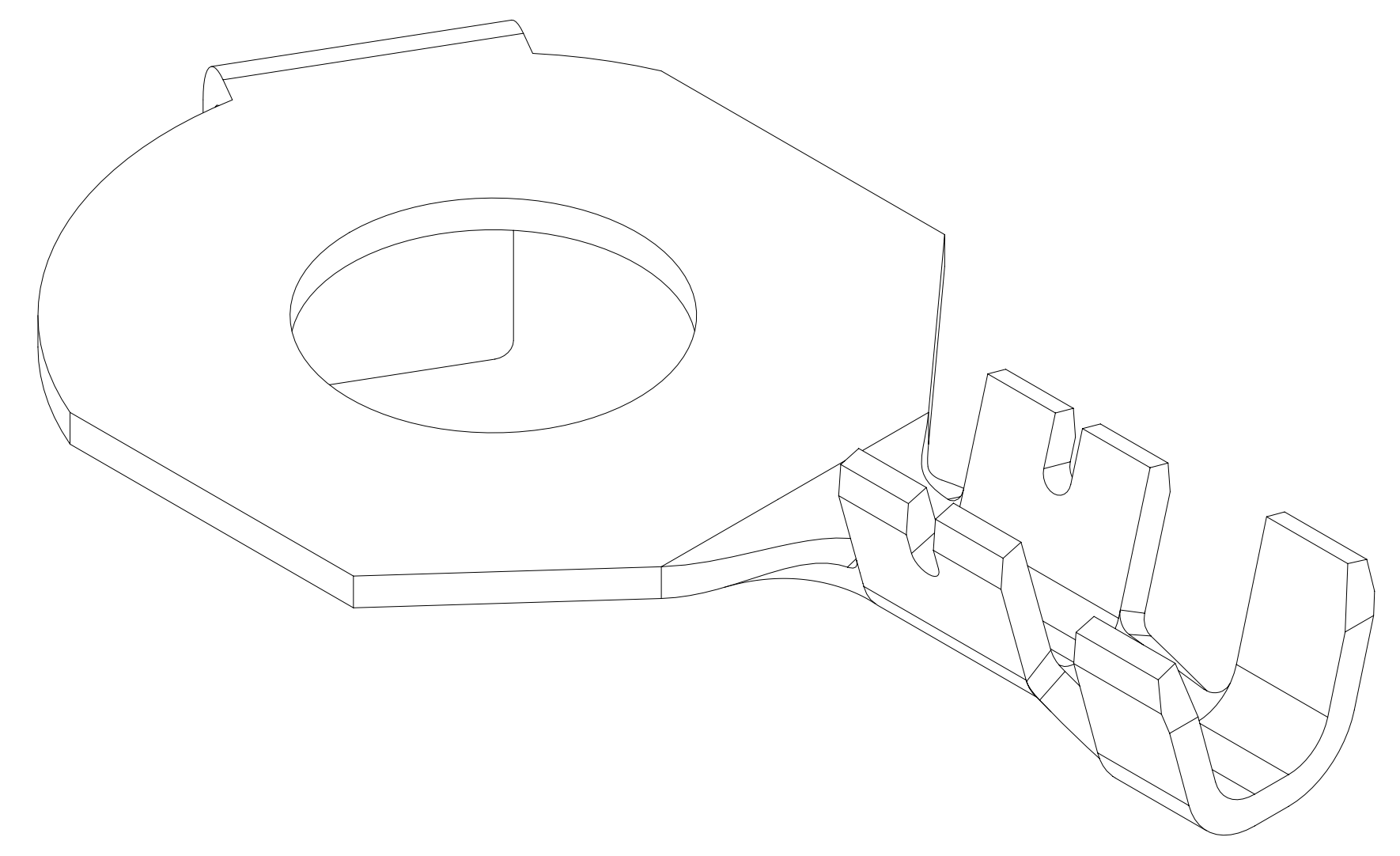
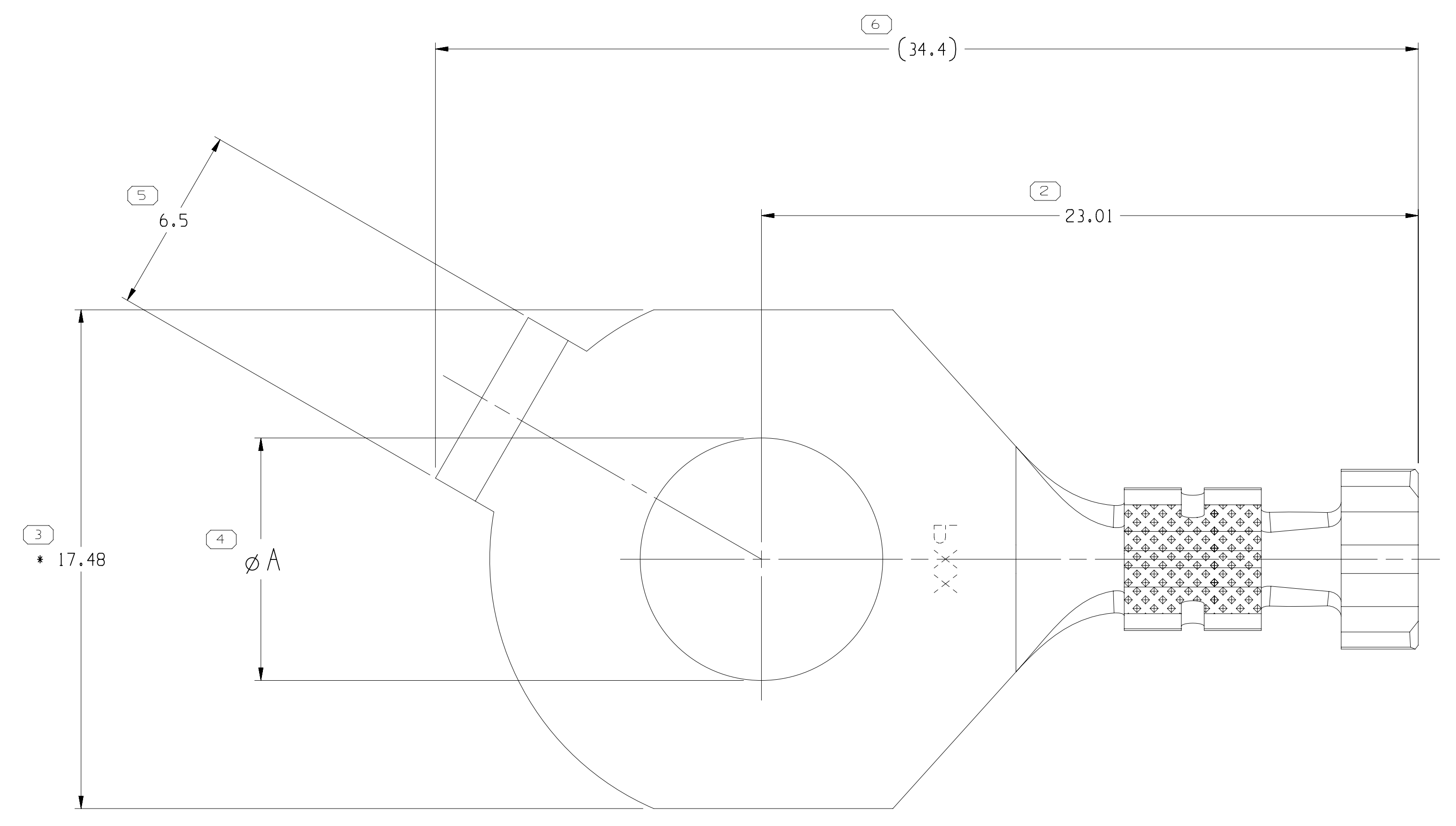


SYMBOL DEFINITION		TOTAL NO OF INSPECTIONS REQUIRED	
○	A DIMENSION WITHOUT AN INSPECTION REPORT SYMBOL DOES NOT REQUIRE INSPECTION. IT MAY BE CONTROLLED ON THE INDIVIDUAL COMPONENT DRAWING.	12	
○	LAST NO. USED	11	

MISSING SYMBOLS		NO MISSING SYMBOL NUMBER	
DATE	STG	REV	CHG
25AU99	R	001	-
25AU99	R	002	-
06ND99	R	003	-
26SE00	R	004	-
13ND00	R	005	-
04DE00	R	006	-
16JA01	R	007	-
19FE01	R	008	-
20ND03	R	009	-
23OC09	R	010	-
11MY10	R	011	-
18MY10	R	012	-
08OC10	R	013	-
14MR11	R	014	-
11MY11	R	015	-
13OC11	R	016	-
05AU13	R	017	-
30JA14	R	018	-
19MR14	R	019	-
28JL14	R	020	-
08OC15	R	021	-
08FE21	R	022	-



TYPE 502  
SAME AS TYPE 501  
EXCEPT AS SHOWN

- NOTES
- UNLESS OTHERWISE SPECIFIED AND/OR INDICATED: DIMENSIONS ARE TO FACE OF VIEW SHOWN AND AUTOMATICALLY ROUNDED BY COMPUTER FOR INSPECTION (SEE MATH MODEL FOR PRECISE DIMENSIONS). FOR ALL OTHER DIMENSIONS NOT SHOWN BUT REQUIRED FOR TOOL BUILD, SEE MATH MODEL FOR PRECISE TOOL PATH DATA.
  - "\*•" INDICATES DIMENSIONS MADE AT CUT-OFF AND CRIMP DIE.
  - BEND OPERATION WILL BE PERFORMED AT WIRING HARNESS PLANT.

PART NO	REV	N/P	MAT'L SIZE	UNPLATED	MAT'L SPEC	TYPE	SIZE (MM²)	ID	DIA	M6	M8	M10	BENT TAB
15519804	01	AB	0.813 X 42.47		15509708	502	1-0.8	17	2.7	X	-	-	3.6
15509708	02	AB	0.813 X 42.47		TIN PLATED COPPER ALLOY	501	1-0.8	17	2.7	X	-	-	3.6
13872120	01	AD	0.813 X 42.47		TIN PLATED COPPER ALLOY	501	5	10	4.5	X	-	-	5.6
13788232	01	AC	0.813 X 42.47		TIN PLATED COPPER ALLOY	501	1-0.8	17	2.7	-	X	-	3.6
15454533	01	AD	0.813 X 42.47		TIN PLATED COPPER ALLOY	501	5	10	4.5	-	X	-	5.6
15405816	01	AD	0.813 X 42.47		TIN PLATED COPPER ALLOY	501	3-2	13	3.7	-	X	-	5
15394494	01	AF	0.813 X 42.47		TIN PLATED COPPER ALLOY	501	1-0.8	17	2.7	-	X	-	3.6
15373480	01	AG	0.813 X 42.47		TIN PLATED COPPER ALLOY	501	5	10	4.5	-	X	-	5.6
15355190	A1	-	0.813 X 40.9		TIN PLATED COPPER ALLOY	501	1-0.8	17	2.7	-	X	-	3.6
15355189	02	AG	0.813 X 42.47		TIN PLATED COPPER ALLOY	501	1-0.8	17	2.7	-	X	-	3.6
15355120	A1	-	0.813 X 40.9		TIN PLATED COPPER ALLOY	501	3-2	13	3.7	-	X	-	5
15336640	03	AF	0.813 X 42.47		TIN PLATED COPPER ALLOY	501	3-2	13	3.7	-	X	-	5

10.6 ± 0.1	3/8	M10
8.5 ± 0.1	5/16	M8
6.7 ± 0.1	1/4	M6
Ø A ± 0.13	STANDARD	METRIC
	SCREW/STUD SIZE	

7	PROCESS SENSITIVE DIMENSION
10.6 ± 0.1	INDICATE DIMENSIONS ENCLOSED IN ( )
8.5 ± 0.1	INDICATE REFERENCE DIMENSIONS AND NO TOLERANCE LIMITS ARE ESTABLISHED
6.7 ± 0.1	INDICATE DIMENSIONAL RANGE (MM)
Ø A ± 0.13	INDICATE DIMENSIONAL RANGE (MM) > 12
	INDICATE DIMENSIONAL RANGE (MM) > 12
	INDICATE DIMENSIONAL RANGE (MM) > 12
	INDICATE DIMENSIONAL RANGE (MM) > 12
	INDICATE DIMENSIONAL RANGE (MM) > 12
	INDICATE DIMENSIONAL RANGE (MM) > 12

**•APTIV•**  
CONNECTION SYSTEMS  
WARREN, OH  
COPYRIGHT 1998 APTIV, ALL RIGHTS RESERVED.  
THIS DRAWING IS THE PROPERTY OF APTIV AND CONTAINS APTIV CONFIDENTIAL INFORMATION. THE REPRODUCTION, DISTRIBUTION AND UTILIZATION OF THIS DOCUMENT OR ITS RELATED CAD DATA, AS WELL AS COMMUNICATION OF ANY CONTENT TO OTHERS, WITHOUT EXPRESS AUTHORIZATION, IS PROHIBITED.

APPROVED BY: JOSE TAPIA, FCO, KOPKA, E., HAROLDSON  
DATE: 11AU98, 13AU98, 24AU98

DRAWING NUMBER: TAXI TERM RING  
12103500

SIZE: A0  
SCALE: 5:1  
FRAME NO: 1 OF 1  
SHEET NO: 5 OF 5  
REV: R 22