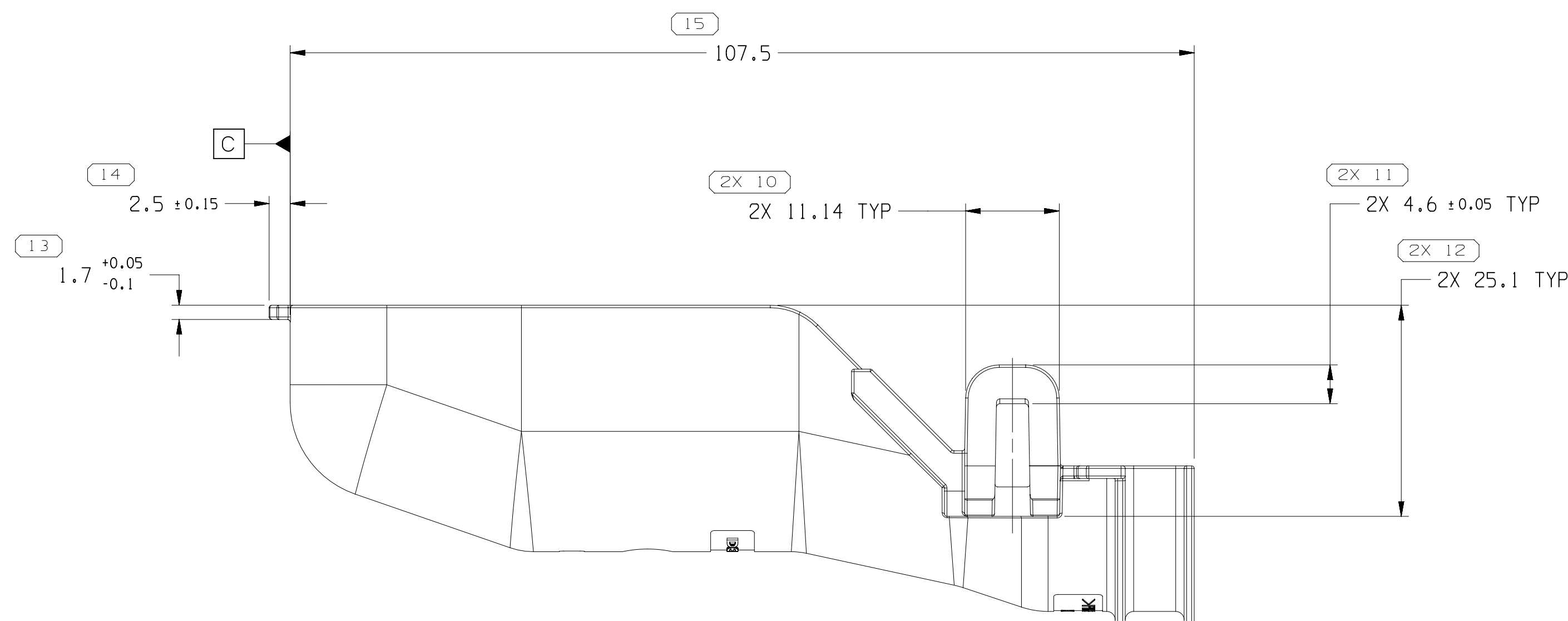
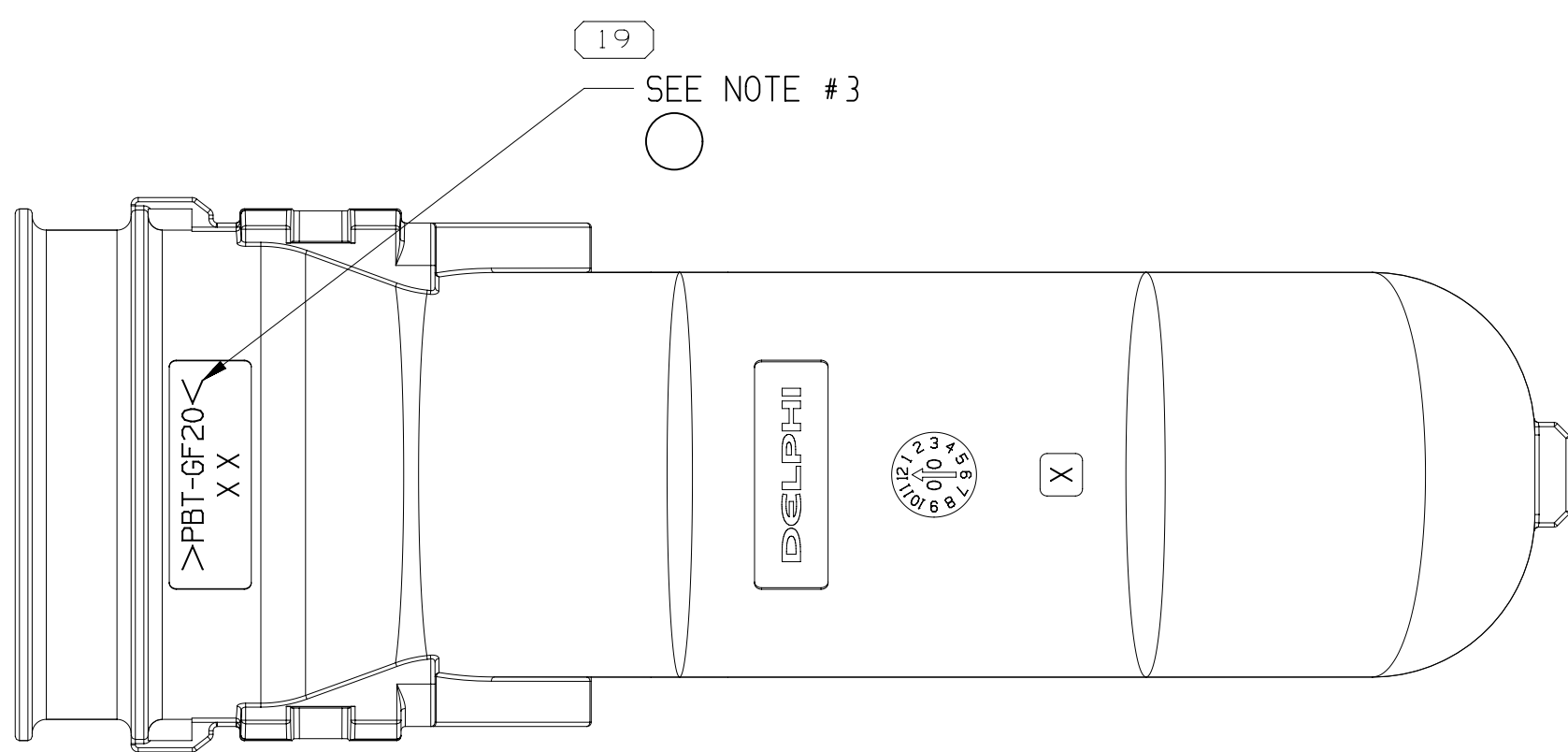
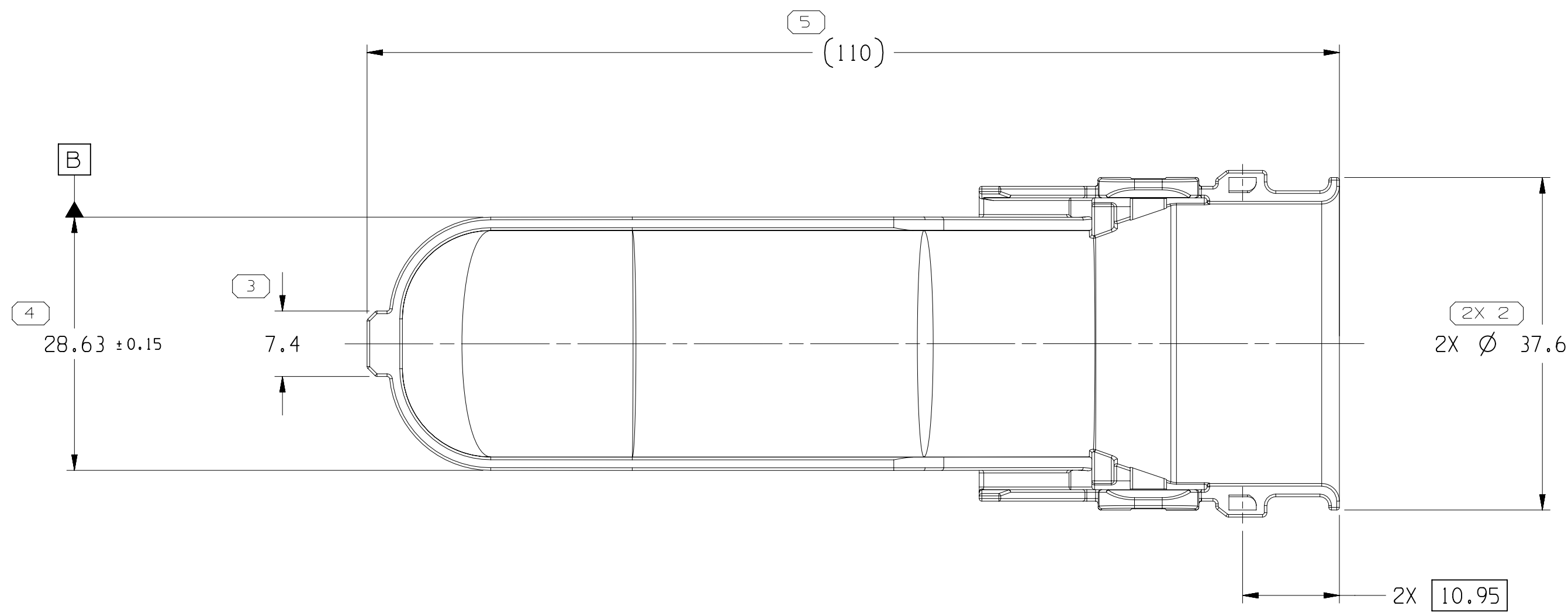
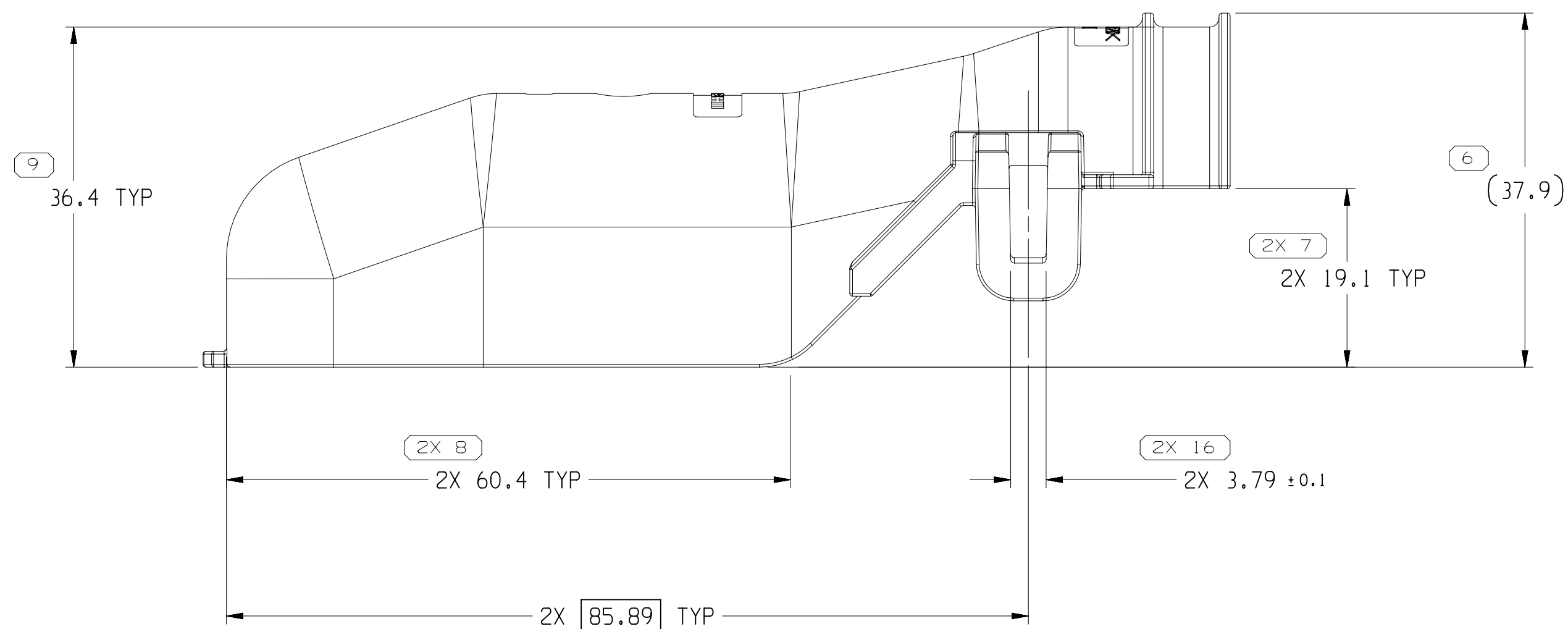


MISSING SYMBOLS		DWG STATUS				ZONE	REVISION HISTORY				AUTH	DR	APPROV	APPROV #
NO MISSING SYMBOL NUMBER		DATE	STG	REV	N/P		CHG							
		225E15	R	01	-	-			33204328 - WAS SEPARATE DRAWING AND 33273791 - RELEASED PART DRAWING	430417	KV	KV	TKS	
		09MR16	R	02	-	-			UPDATED PDM ATTRIBUTES	432286	KV	KV	TKS	
		02AU16	R	03	-	-			UPDATED PDM ATTRIBUTES	433742	SM	SM	TKS	
		16SE16	R	04	-	-			ADDED NOTE #5	433817	SM	SM	TKS	
		12NO18	R	05	-	-			ALL PARTS - UPDATED PART AVAILABILITY	441554	KRK	KRK	KST	
		14DE18	R	06	-	-			ALL PARTS - ADDED DIM #19, NOTE #3 & "MATERIAL CALLOUT" COLUMN ON CHART AND NOTE #6 WAS NOTE #3	441778	NKS	NKS	KST	



- DIMENSIONS ARE TO FACE OF VIEW SHOWN AND AUTOMATICALLY ROUNDED BY COMPUTER FOR INSPECTION (SEE MATH MODEL FOR PRECISE DIMENSIONS). FOR ALL OTHER DIMENSIONS NOT SHOWN BUT REQUIRED FOR TOOL BUILD, SEE MATH MODEL FOR PRECISE TOOL PATH DATA.
2. THIS PRODUCT IS NOT CATEGORIZED AS AN APPEARANCE ITEM, MINOR IMPERFECTIONS INCLUDING, BUT NOT LIMITED TO, FLOW MARKS, COLOR BLEMISHES, GATE VESTIGE, AND SOFT FLASH THAT DO NOT AFFECT THE FIT, FORM, OR FUNCTION OF THE PART ARE PERMISSIBLE PER DPNP-4.7-C-01.
 3. MATERIAL RECYCLING CODE PER ISO 11469, (1.5)(X10.1) CHARACTERS AS SHOWN (SEE CHART FOR MATERIAL CALLOUT) TO BE LOCATED ON ANY EXTERIOR SURFACE.
 4. (1.3)(X10.1) DELPHI CORPORATE BRAND TO BE LOCATED ON ANY EXTERIOR SURFACE, PREFERABLY VISIBLE AT FINAL ASSEMBLY. OPTIONAL CONSTRUCTION FOR EXISTING TOOLING MAY BE "PED".
 5. PART MAY BE INSPECTED IN RESTRAINED POSITION.
 6. REFERENCE MATING COMPONENTS OR EQUIVALENT:

A LINE DRAWING THROUGH A PART NUMBER	
INDICATED BY PHYSICAL PARTS ARE NOT AVAILABLE FOR ORDERING.	
PART NUMBERS THAT DO NOT HAVE A LINE PRESENT INDICATE THAT PHYSICAL PARTS ARE AVAILABLE FOR ORDERING.	
CONTACT UPSIDE SALES TO ASSURE AVAILABILITY OF PARTS.	
DWG TYPE	
PART DRAWING	
STYLE	
VOLUME (CM) SEE CHART	DISTR CODE D
UNLESS OTHERWISE SPECIFIED	
THIS DOCUMENT IS IN ACCORDANCE WITH ASME Y14.5M-1994 FOR THE FIRST DIMENSIONING SYSTEM. SEPARATE PATTERNS OF TOLERANCING ADDENDUM-2001. SEPARATE PATTERNS OF TOLERANCING ADDENDUM-2001. SEPARATE PATTERNS OF REFERENCES.	
ALL DIMENSIONS ARE IN MILLIMETERS	
REFERENCE	

<h1 style="text-align: center;">• APTIV •</h1> <p style="text-align: center;">CONNECTION SYSTEMS</p> <p style="text-align: center;">(Domestic, India)</p> <p style="text-align: center;">COPYRIGHT 2015 APTIV. ALL RIGHTS RESERVED.</p> <p>THIS DRAWING IS THE PROPERTY OF APTIV AND CONTAINS APTIV CONFIDENTIAL INFORMATION. THE REPRODUCTION, DISTRIBUTION AND UTILIZATION OF THIS DOCUMENT OR ITS RELATED CAD DATA, AS WELL AS COMMUNICATION OF ANY CONTENT IS STRICTLY PROHIBITED WITHOUT EXPRESS AUTHORIZATION. IT IS PROHIBITED:</p>									
DR					DATE				
APV02 V_KANDASAMY					22SE15				
APV02 V_KANDASAMY					22SE15				
APV03 TURNER KEVIN S					22SE15				
APV04									
APV05									
SUBSTANCES OF CONCERN AND RECYCLED CONTENT PER APTIV (1094900)									
MATERIAL SEE CHART									
DRAWING NAME									
TAXI COV CONN									
DRAWING NUMBER									
33273794									
SIZE	SCALE	FRAME NO	SHEET NO	SHEET NO	STD	REV	APP	APP	APP
A0	2:1	1	OF 1	1	OF 1	R	06	-	-

DIMENSIONAL RANGE (MM)							CHART 1	
FROM TO	> 0 20	> 20 30	> 30 70	> 70 100	> 100 150	> 150 200	> 200 250	> 250 300
TOLERANCE UNLESS OTHERWISE SPECIFIED								
	±0.15	±0.2	±0.3	±0.4	±0.5	±0.6	±0.8	±1
ANGULAR TOLERANCE ±2°								