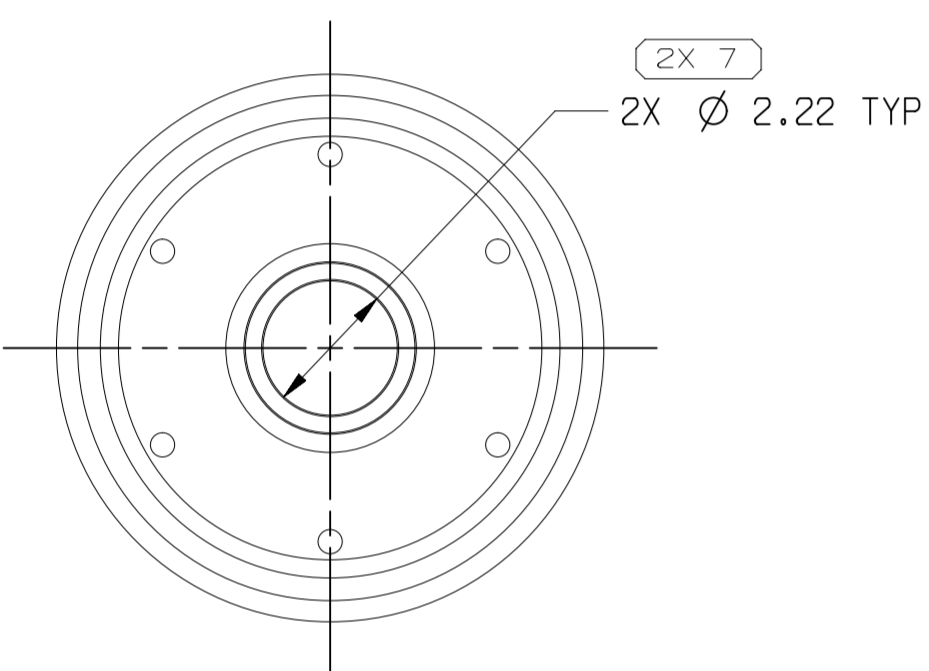
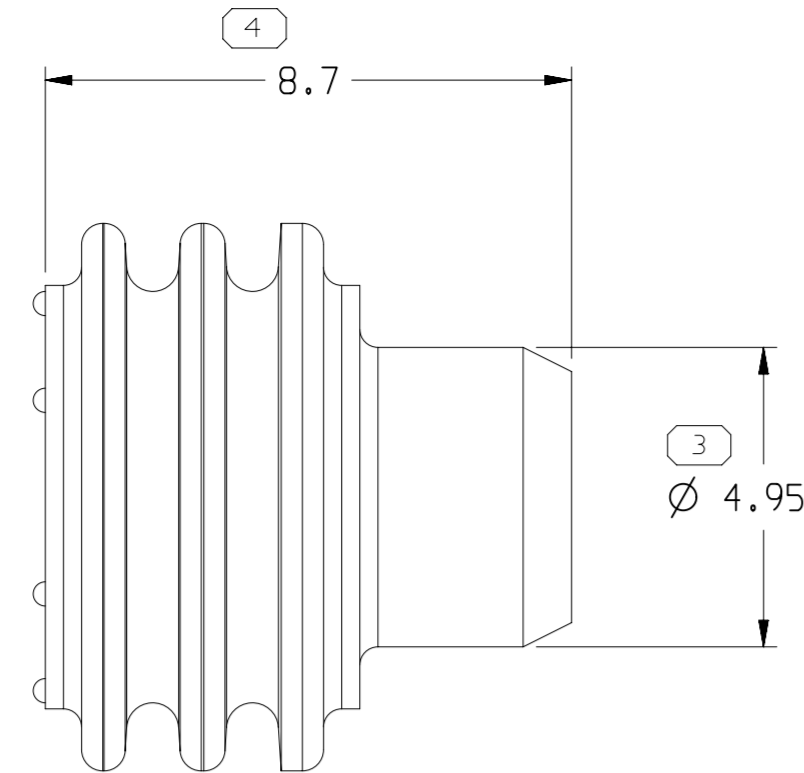
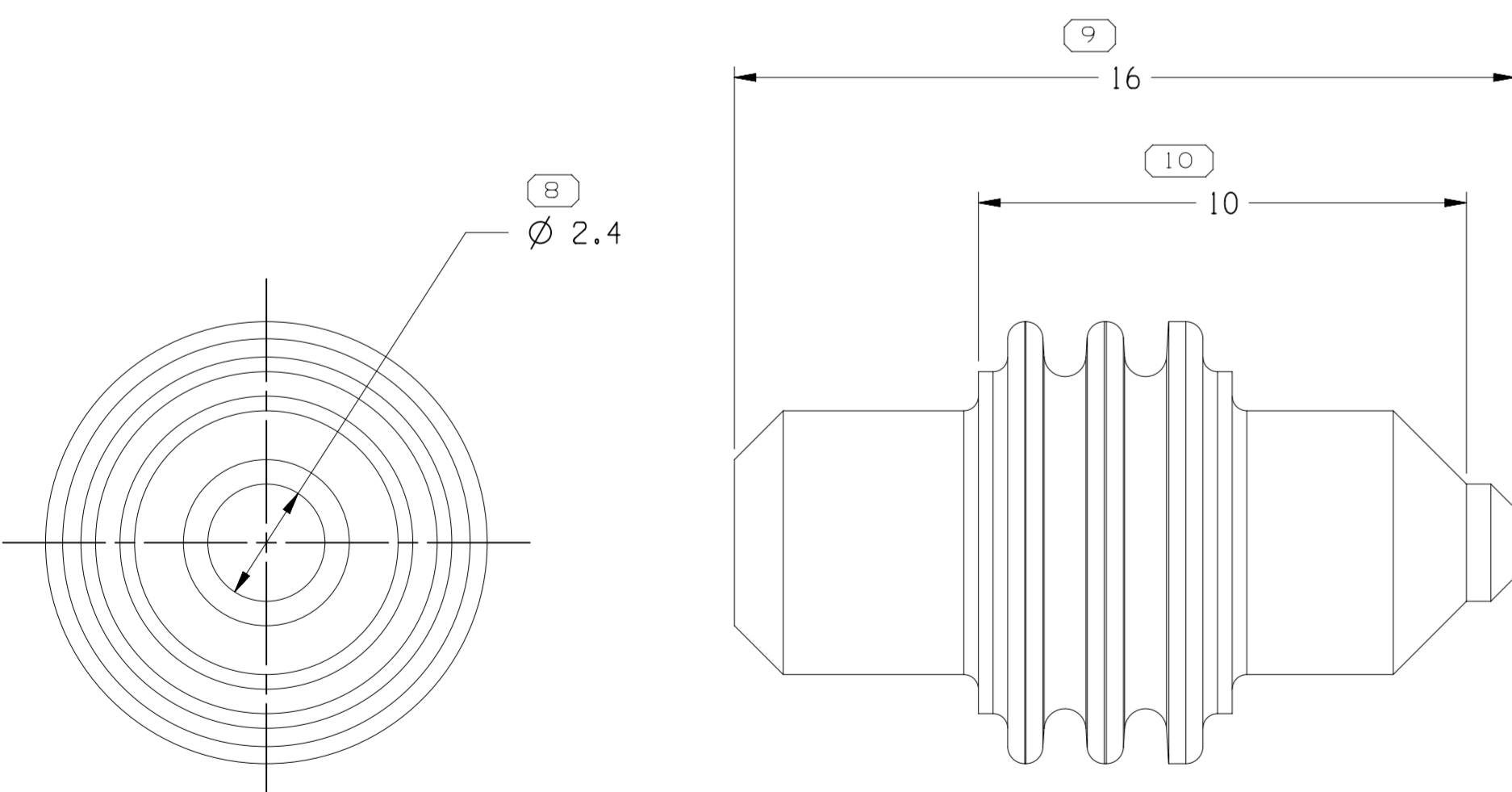


TYPE 102
SAME AS TYPE 101
EXCEPT AS SHOWN



TYPE 103
SAME AS TYPE 102
EXCEPT AS SHOWN



TYPE 104
SAME AS TYPE 102
EXCEPT AS SHOWN

33359662	01	AB	RUBBER COMPOUND GRAY	104	N/A	0.415
33359660	01	AA	RUBBER COMPOUND RED	103	RTK-031 (3.3)	0.268
33359661	01	AA	RUBBER COMPOUND WHITE	102	RG-174 (2.8)	0.284
33359659	02	AA	RUBBER COMPOUND GREEN	101	RG-58 (4.95)	0.166
PART NO	REV	N/P	MATERIAL SPECIFICATION AND COLOR	TYPE	CABLE SIZE OD	VOLUME

SYMBOL DEFINITION

A DIMENSION WITHOUT AN INSPECTION REPORT SYMBOL () DOES NOT REQUIRE INSPECTION. IT MAY BE CONTROLLED ON THE INDIVIDUAL COMPONENT DRAWING.

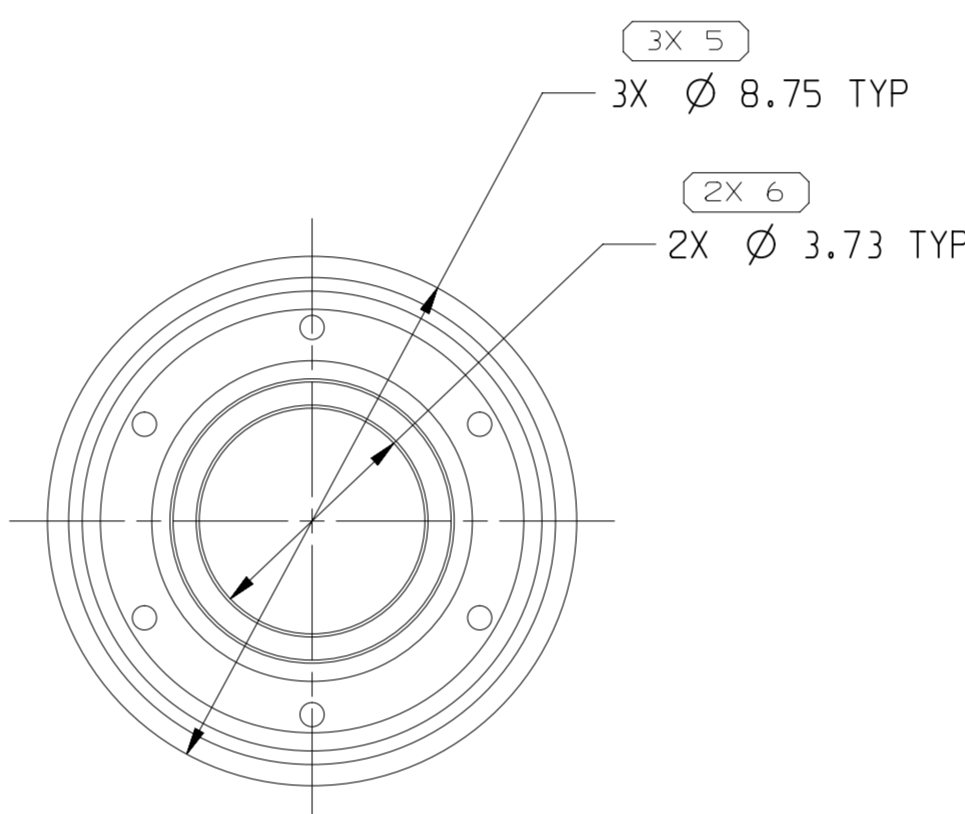
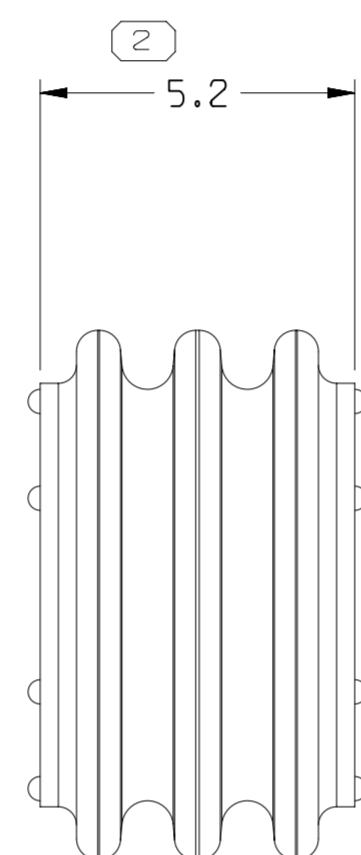
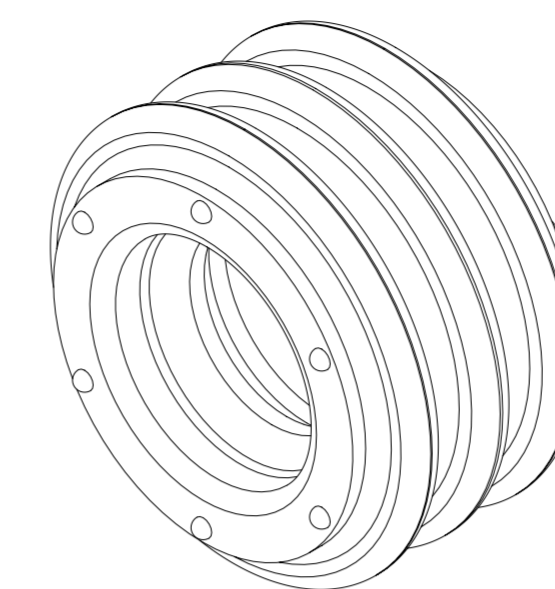
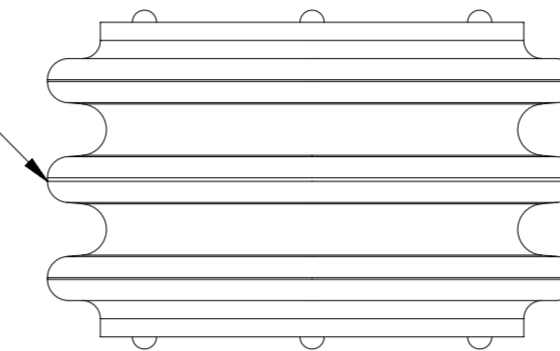
TOTAL NO OF INSPECTIONS REQUIRED	19
LAST NO. USED	12

MISSING SYMBOLS

NO MISSING SYMBOL NUMBER

DWG STATUS					ZONE	REVISION HISTORY	AUTH	DR	APVD	APVD
DATE	STG	REV	N/P	CHG						
13JL16	R	01	-	-		ALL PARTS - RELEASED	433660	TAI	TAI	DIW
15JA18	R	02	-	-		33359659 - MAT'L GENERIC CALLOUT WAS RUBBER COMPOUND ORANGE	438757	JVM	JVM	DIW
03JN19	R	03	-	-		33359659 & 33359661-62 - UPDATED PART AVAILABILITY	443483	LVD	RNL	RNL
05AU19	R	04	-	-		33359660 - UPDATED PART AVAILABILITY	444166	RNL	RNL	CEL
15N019	R	05	-	-		33359662 - CORRECTED COLOR TO GRAY	550553	AHY	AHY	RNL

12 SEALING RIBS MUST BE FREE OF SINKS, VOIDS, KNIT LINES AND FLASH, ALL AROUND PART.



TYPE 101

NOTES

1. UNLESS OTHERWISE SPECIFIED AND/OR INDICATED:

DIMENSIONS ARE TO FACE OF VIEW SHOWN AND AUTOMATICALLY ROUNDED BY COMPUTER FOR INSPECTION (SEE MATH MODEL FOR PRECISE DIMENSIONS). FOR ALL OTHER DIMENSIONS NOT SHOWN BUT REQUIRED FOR TOOL BUILD, SEE MATH MODEL FOR PRECISE TOOL PATH DATA.

2. PARTS ARE TO BE PACKAGED IN SEALED PLASTIC BAGS. GROSS WEIGHT INCLUDING CARTON IS NOT TO EXCEED 5 POUNDS.

2 PROCESS SENSITIVE DIMENSION
DIMENSIONS ENCLOSED IN () INDICATE REFERENCE DIMENSIONS AND NO TOLERANCE LIMITS ARE ESTABLISHED

DIMENSIONAL RANGE (MM)		CHART E1	
FROM	TO	> 30	> 300
> 0	> 20	> 70	> 100
> 20	> 30	> 100	> 150
> 30	> 70	> 150	> 200
> 70	> 100	> 200	> 250
> 100	> 150	> 250	> 300
> 150	> 200	> 300	> 400

TOLERANCE UNLESS OTHERWISE SPECIFIED
 ±0.15 ±0.2 ±0.3 ±0.4 ±0.5 ±0.6 ±0.8 ±1 ±1.2
 ANGULAR TOLERANCE ±2°

A LINE DRAWN THROUGH A PART NUMBER INDICATES THAT PHYSICAL PARTS ARE NOT AVAILABLE FOR ORDERING.
 PART NUMBERS THAT DO NOT HAVE A LINE PRESENT INDICATE THAT PHYSICAL PARTS ARE AVAILABLE FOR ORDERING.
 CONTACT APTIV SALES TO ASSURE AVAILABILITY OF PARTS.

DWG TYPE: PART DRAWING

STYLE: []

VOLUME (CM³): [] DISTR CODE: D

UNLESS OTHERWISE SPECIFIED
 THIS DOCUMENT IS IN ACCORDANCE WITH ASME Y14.5M-1994 AS AMENDED BY THE GM GLOBAL DIMENSIONING AND TOLERANCING ADDENDUM-2001. SEPARATE PATTERNS OF FEATURES MAY BE GAGED SEPARATELY REGARDLESS OF DATUM REFERENCES.

ALL DIMENSIONS ARE IN MILLIMETERS

REFERENCE: []

THIRD ANGLE PROJECTION

DO NOT SCALE USE MATH DATA

• APTIV •
 CONNECTION SYSTEMS
 WARREN, OH
 COPYRIGHT 2016 APTIV. ALL RIGHTS RESERVED.

THIS DRAWING IS THE PROPERTY OF APTIV AND CONTAINS APTIV CONFIDENTIAL INFORMATION. THE REPRODUCTION, DISTRIBUTION AND UTILIZATION OF THIS DOCUMENT OR ITS RELATED CAD MATH DATA, AS WELL AS COMMUNICATION OF ANY CONTENT TO OTHERS, WITHOUT EXPRESS AUTHORIZATION, IS PROHIBITED.

DR	DATE
APVD1 T. ILER	13JL16
APVD2 T. ILER	13JL16
APVD3 D. WAKEFORD	13JL16
APVD4	
APVD5	

SUBSTANCES OF CONCERN AND RECYCLED CONTENT PER APTIV 10949001

MATERIAL SEE CHART

DRAWING NAME: TAXI SEAL CBL 1W

DRAWING NUMBER: 33359663

SIZE	SCALE	FRAME NO	SHEET NO	STG	REV	N/P
A1	8:1	1 OF 1	1 OF 1	R	05	-