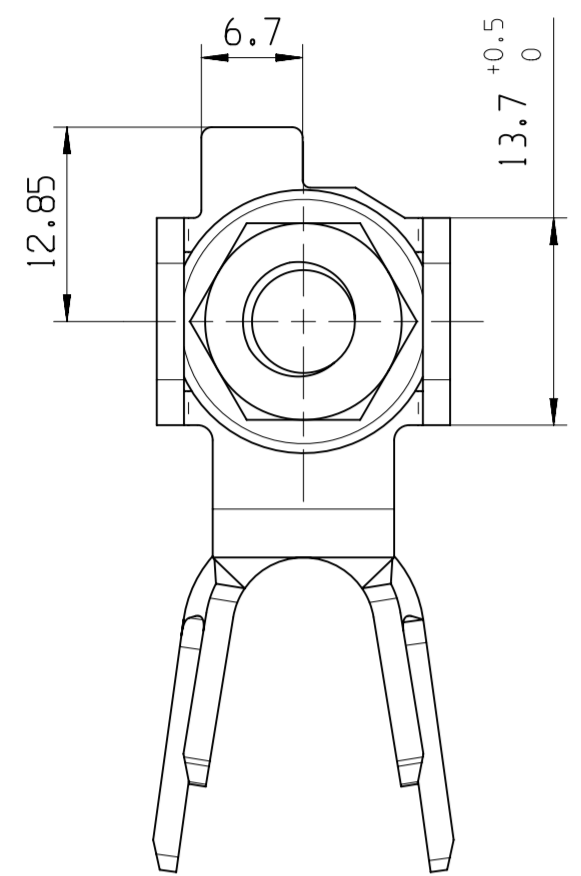
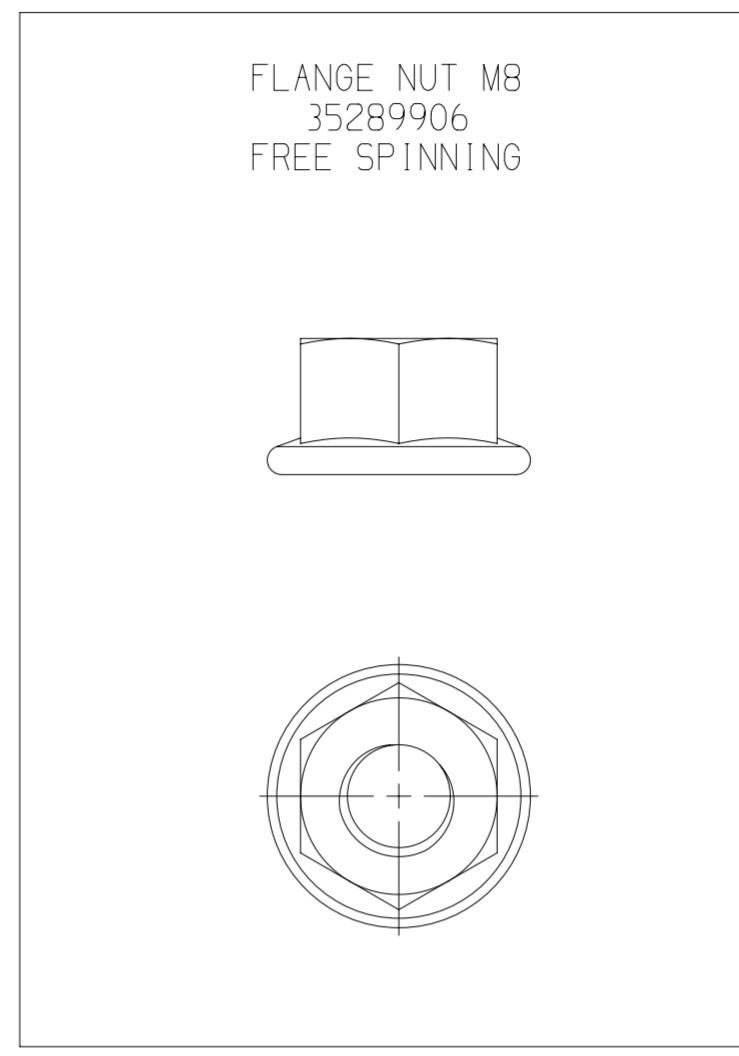
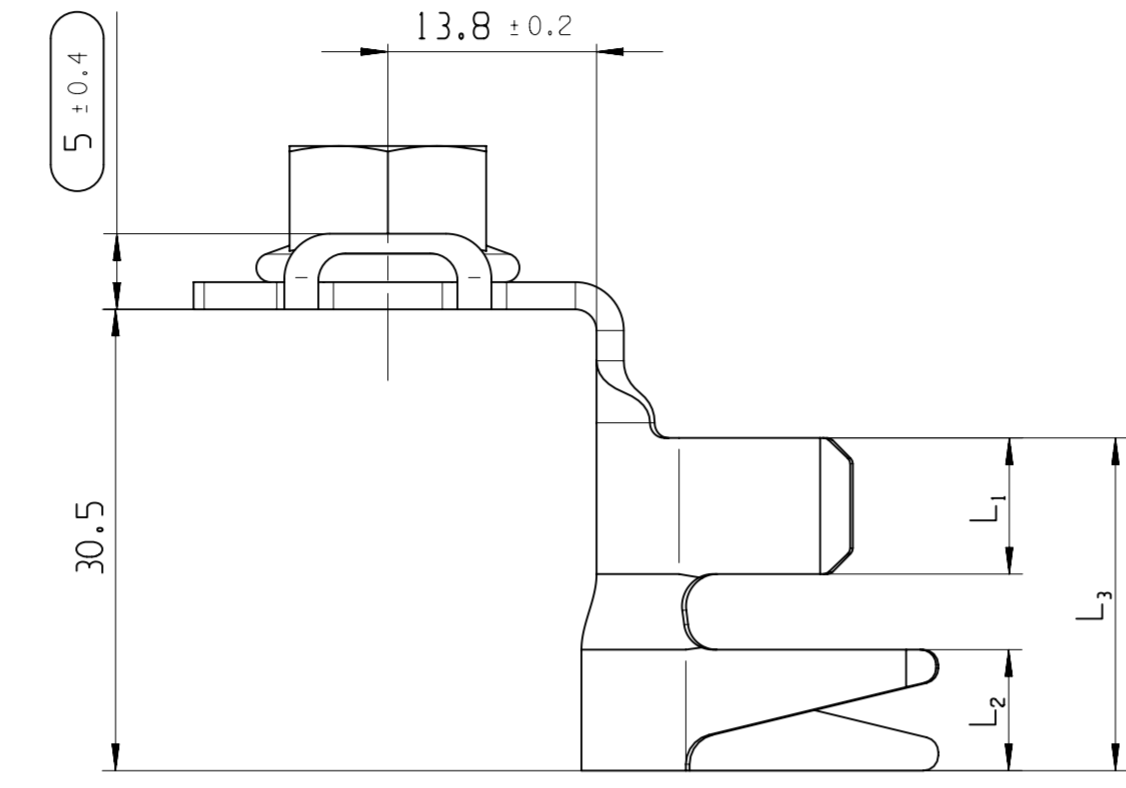
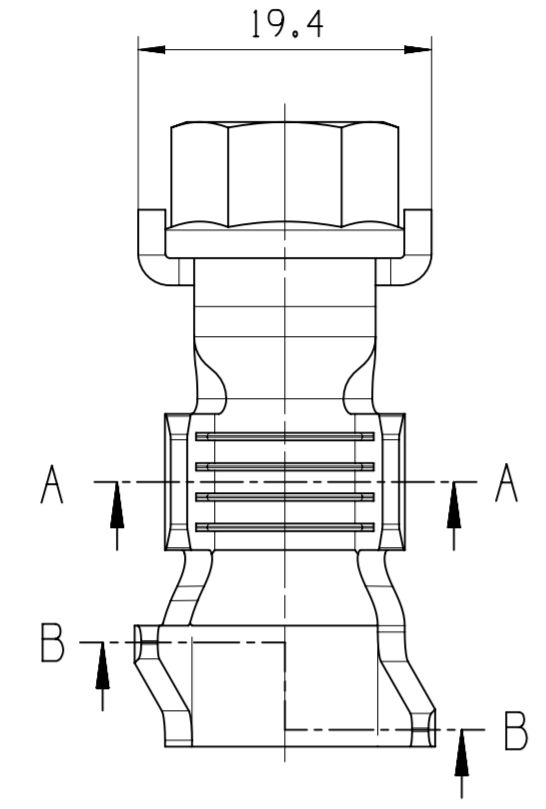


| NO. | WEIGHT [Kg] | APTIV PART NO. | PART REV. | DATE | CODING | CROSS SECTION | MATERIAL | SURFACE | MATERIAL THICKNESS | WIRE TYPE | PART NO. FLANGE NUT | L ₃ ±0.4 | L ₂ ±0.4 | L ₁ ±0.4 | R ₂ ±0.2 | R ₁ ±0.2 | H ₂ ±0.4 | H ₁ ±0.4 | B ₂ ±0.4 | B ₁ ±0.4 |
|-----|-------------|----------------|-----------|--------|--------|----------------------|----------|-----------------|--------------------|-----------|---------------------|---------------------|---------------------|---------------------|---------------------|---------------------|---------------------|---------------------|---------------------|---------------------|
| 1 | 0.027 | 35269989 | 01 | 26JN18 | CODE 1 | 35-50mm ² | CuSn6 | gal. min 3µm Sn | 1.8 | FLY | 35289906 | 22.0 | 8.0 | 9.0 | 8.0 | 6.5 | 23.6 | 16.95 | 19.9 | 15.9 |
| 2 | 0.027 | 35269992 | 01 | 11SE18 | CODE 2 | 35-50mm ² | CuSn6 | gal. min 3µm Sn | 1.8 | FLY | 35289906 | 22.0 | 8.0 | 9.0 | 8.0 | 6.5 | 23.6 | 16.95 | 19.9 | 15.9 |
| 3 | 0.027 | 35269991 | 01 | 26JN18 | CODE 3 | 35-50mm ² | CuSn6 | gal. min 3µm Sn | 1.8 | FLY | 35289906 | 22.0 | 8.0 | 9.0 | 8.0 | 6.5 | 23.6 | 16.95 | 19.9 | 15.9 |
| 4 | 0.017 | 35331823 | 01 | 15FE24 | CODE 1 | 35-50mm ² | CuSn6 | gal. min 3µm Sn | 1.8 | FLY | w/o NUT | 22.0 | 8.0 | 9.0 | 8.0 | 6.5 | 23.6 | 16.95 | 19.9 | 15.9 |
| 5 | 0.017 | 35331826 | 01 | 15FE24 | CODE 2 | 35-50mm ² | CuSn6 | gal. min 3µm Sn | 1.8 | FLY | w/o NUT | 22.0 | 8.0 | 9.0 | 8.0 | 6.5 | 23.6 | 16.95 | 19.9 | 15.9 |
| 6 | 0.017 | 35331825 | 01 | 15FE24 | CODE 3 | 35-50mm ² | CuSn6 | gal. min 3µm Sn | 1.8 | FLY | w/o NUT | 22.0 | 8.0 | 9.0 | 8.0 | 6.5 | 23.6 | 16.95 | 19.9 | 15.9 |

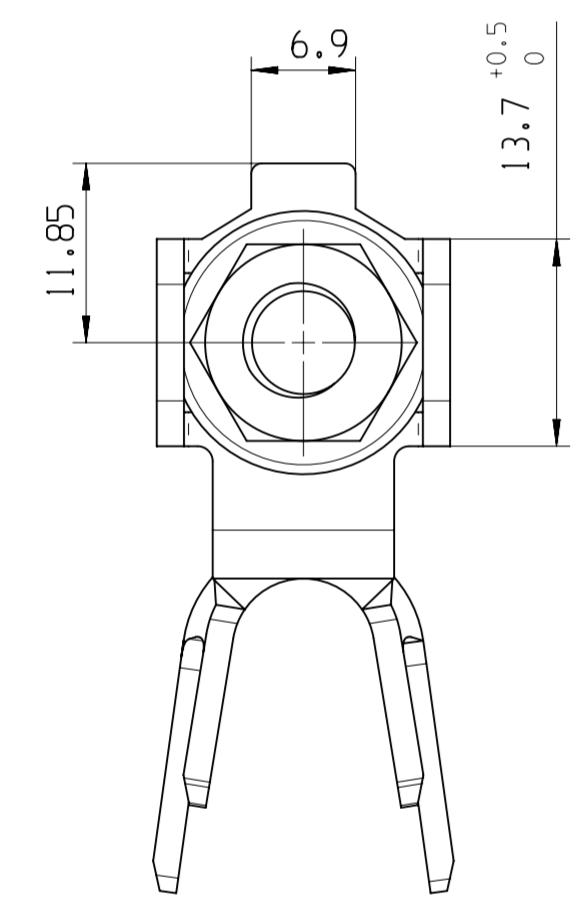
| DWG STATUS | | | | REVISION HISTORY | | | | AUTH | DR | APVD 1 | APVD 2 | |
|------------|-----|-----|---------|------------------|------|-----|----|--|----|--------|--------|-----|
| DATE | STG | REV | N/P/CHG | ZONE | DATE | REV | BY | REASON | | | | |
| 20MY19 | R | 01 | | | | | | INITIAL RELEASE / ERSTFREIGABE | | PHIL | R.GUT | SYS |
| 15FE24 | R | 02 | | | | | | PART NUMBERS ADDED / TEILENUMMERN HINZU: 35331823 / 35331825 / 35331826 | | PHIL | FRI | SYS |
| 01JL24 | R | 02 | AA | C9 | | | | REFERENCE DIM. ADDED / REFERENZMASS HINZU | | PHIL | FRI | SYS |



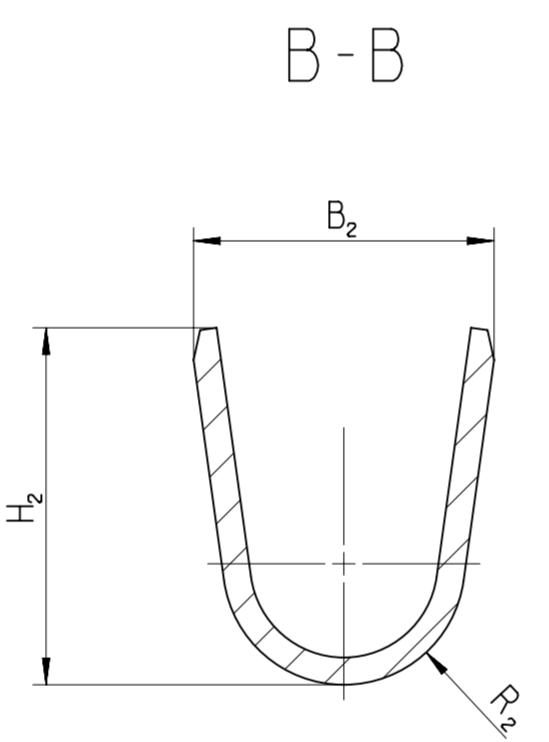
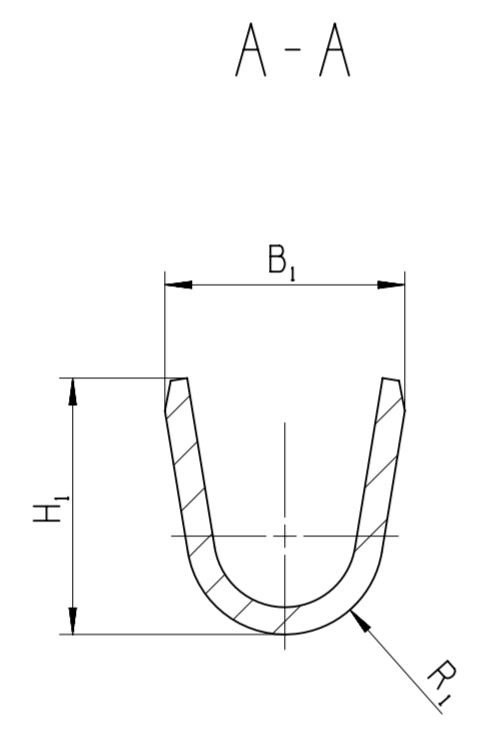
CODE 1
35269989



FLANGE NUT M8
35289906
FREE SPINNING



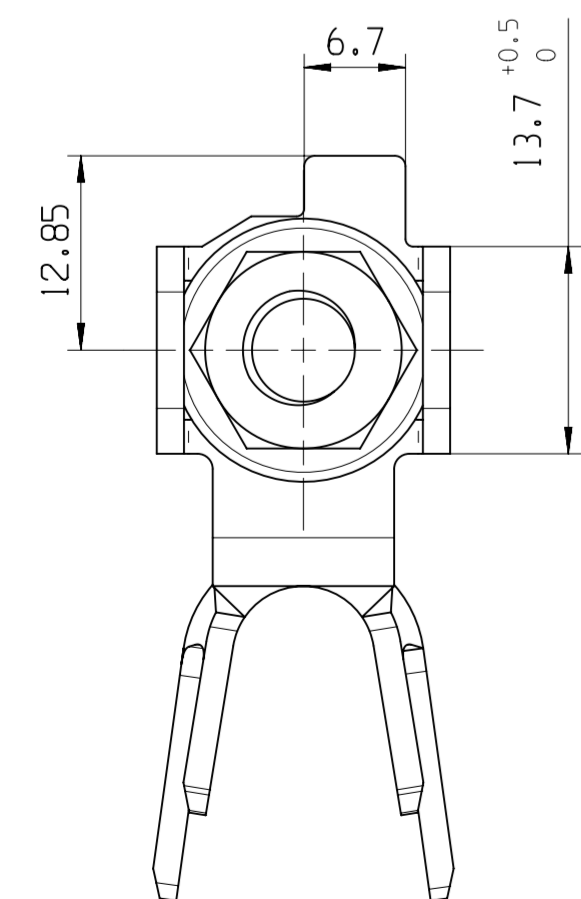
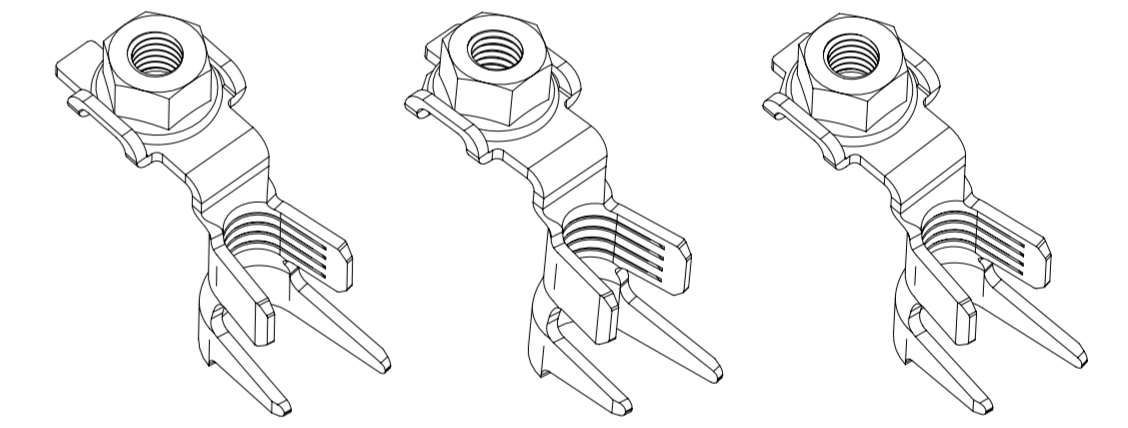
CODE 2
35269992



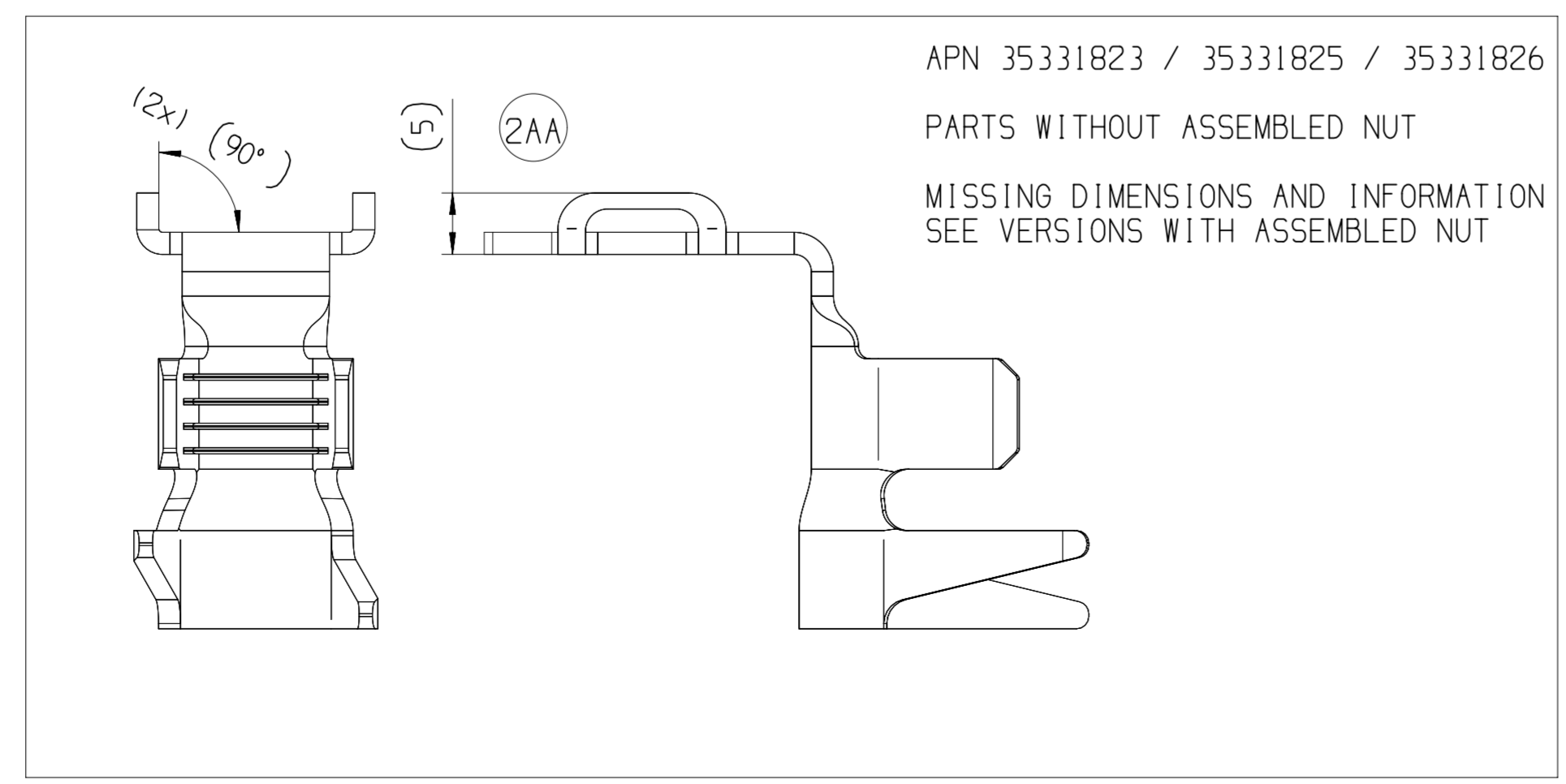
BEMERKUNGEN / COMMENTS

- THE CABLE LUGS ARE BULK GOODS
- DIMENSIONS MARKED WITH \varnothing ARE DOCUMENTED IN THE INITIAL SAMPLE INSPECTION REPORT (ISIR)
- DIMENSIONS MARKED WITH \times ARE USED FOR MACHINE CAPABILITY EVIDENCE IN THE CONTEXT OF THE ISIR
- DIMENSIONS MARKED WITH () ARE FOR REFERENCE
- CRIMP MANUFACTURING PARAMETERS AND TOOLING ACCORDING APTIV-SPECIFICATION FOR RESPECTIVE COMPONENT PART (APTIV PART NO.: SEE CHART)
- FLANGE NUT M8 - FREE SPINNING
MATERIAL: DIN EN ISO 989-2
SURFACE: GMW 4700 TYPE B CODE G

SCALE/MASSSTAB
1:1



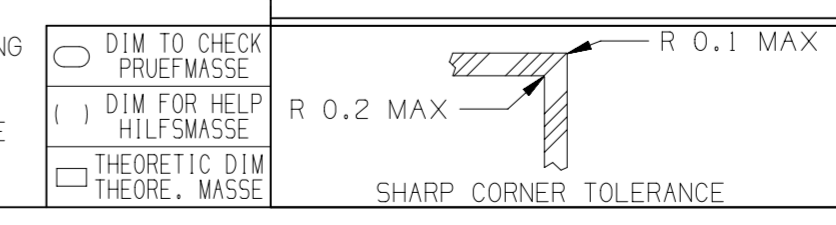
CODE 3
35269991



APN 35331823 / 35331825 / 35331826
PARTS WITHOUT ASSEMBLED NUT
MISSING DIMENSIONS AND INFORMATION
SEE VERSIONS WITH ASSEMBLED NUT

A LINE DRAWN THROUGH A PART NUMBER INDICATES THAT PHYSICAL PARTS ARE NOT AVAILABLE FOR ORDERING.
PART NUMBERS THAT DO NOT HAVE A LINE PRESENT INDICATE THAT PHYSICAL PARTS ARE AVAILABLE FOR ORDERING.
CONTACT APTIV SALES TO ASSURE AVAILABILITY OF PARTS.
MIT EINER LINE DURCHGESTRICHENE PART-NR. GEGENGEZEICHNET, DASS DIESE PART-NR NICHT BESTELLT WERDEN KANN.
PART-NR DIE KEINE LINE ZEIGEN, KENNZEICHNEN, DAS TEILE ZUR BESTELLUNG VERFUEGBAR SIND
FUER VERFUEGBARKEIT DER PARTS DEN EINKAUF VON APTIV KONTAKTIEREN

CRIMP MANUFACTURING PARAMETERS AND TOOLING ACCORDING TO APTIV-SPECIFICATION
CRIMPVERARBEITUNGSPARAMETER UND WERKZEUGE GEMAESS APTIV-SPECIFICATION



| CROSS SECTION QUERSCH. | CCH ±0.2 [mm] | CCW ±0.2 [mm] |
|------------------------|---------------|---------------|
| 35 MM ² | 7.4 | 13.65 |
| 50 MM ² | 8.8 | 13.45 |

| DIMENSIONAL RANGE (MM) NENNMASSBEREICH (MM) | |
|---|-----|
| FROM | TO |
| 0 | >12 |
| TOLERANCE UNLESS OTHERWISE SPECIFIED ALLGEMEINTOLERANZEN NACH DIN 7168 MITTEL | |

| KEY PRODUCT CHARACTERISTICS | | | |
|-----------------------------|-----------------|------------------|------|
| SAFETY/COMPLIANCE | FIT/FUNCTION | TOTAL ON DRAWING | 0 |
| S/C CHECKPOINTS | F/F CHECKPOINTS | LAST NO. USED | 0 |
| NO & TYPE | DESCRIPTION | RATIONALE | PTS |
| | | | ZONE |

| DWG TYP CUSTOMER PART DRAWING | | DISTR CODE |
|--|----|------------|
| WEIGHT (GR) | 27 | D |
| VOLUME (CM ³) | | |
| ROUTING | | |
| UNLESS OTHERWISE SPECIFIED | | |
| GENERAL TOLERANCES ACCORDING TO: SEE CHART | | |
| GD&T ACCORDING TO: ISO 1101 | | |
| REFERENCE | | |
| FIRST ANGLE PROJECTION | | |
| DO NOT SCALE USE MATH DATA | | |

• APTIV •

CONNECTION SYSTEMS
D-42119 WUPPERTAL

COPYRIGHT 2019 APTIV. ALL RIGHTS RESERVED.
REVISI 2024

THIS DRAWING IS THE PROPERTY OF APTIV AND CONTAINS APTIV CONFIDENTIAL INFORMATION. THE REPRODUCTION, DISTRIBUTION AND UTILIZATION OF THIS DOCUMENT OR ITS RELATED CAD MATH DATA, AS WELL AS COMMUNICATION OF ANY CONTENT TO OTHERS, WITHOUT EXPRESS AUTHORIZATION, IS PROHIBITED.

DESE ZEICHNUNG IST EIGENTUM DER FIRMA APTIV UND ENTHAELT APTIV VERTRAEULICHE INFORMATIONEN DIE REPRODUKTION, VERTEILUNG UND NUTZUNG DIESES DOKUMENTES ODER DEREN ZUGEHORIGEN CAD DATEN, ODER AUCH ALS KOMMUNIKATION VON BELIEBIGEN INHALT ZU ANDEREN, IST OHNE BERECHTIGUNGSPRUEFUNG DURCH DIE APTIV UNZULAESSIG.

| | DATE |
|---------------------|--------|
| DR PHILIPPS | 20MY19 |
| APVD1 GUTENSCHWAGER | 20MY19 |
| APVD2 SYS | 20MY19 |
| APVD3 | |
| APVD4 | |
| APVD5 | |

SUBSTANCES OF CONCERN AND RECYCLED CONTENT PER APTIV 10949001
POTENTIELL GEFAEHRLICHE STOFFE UND REZYKLATANTEILE GEMAESS APTIV 10949001

MATERIAL
SEE CHART/SIEHE TABELLE

DRAWING NAME
RING TERMINAL Ø 8.4 WITH FLANGE NUT M8

DRAWING NUMBER
1 3535875

| SIZE | SCALE | FRAME NO | SHEET NO | STG | REV | N/P |
|------|-------|----------|----------|-----|-----|-----|
| A1 | 2:1 | 1 OF 1 | 1 OF 1 | R | 02 | AA |