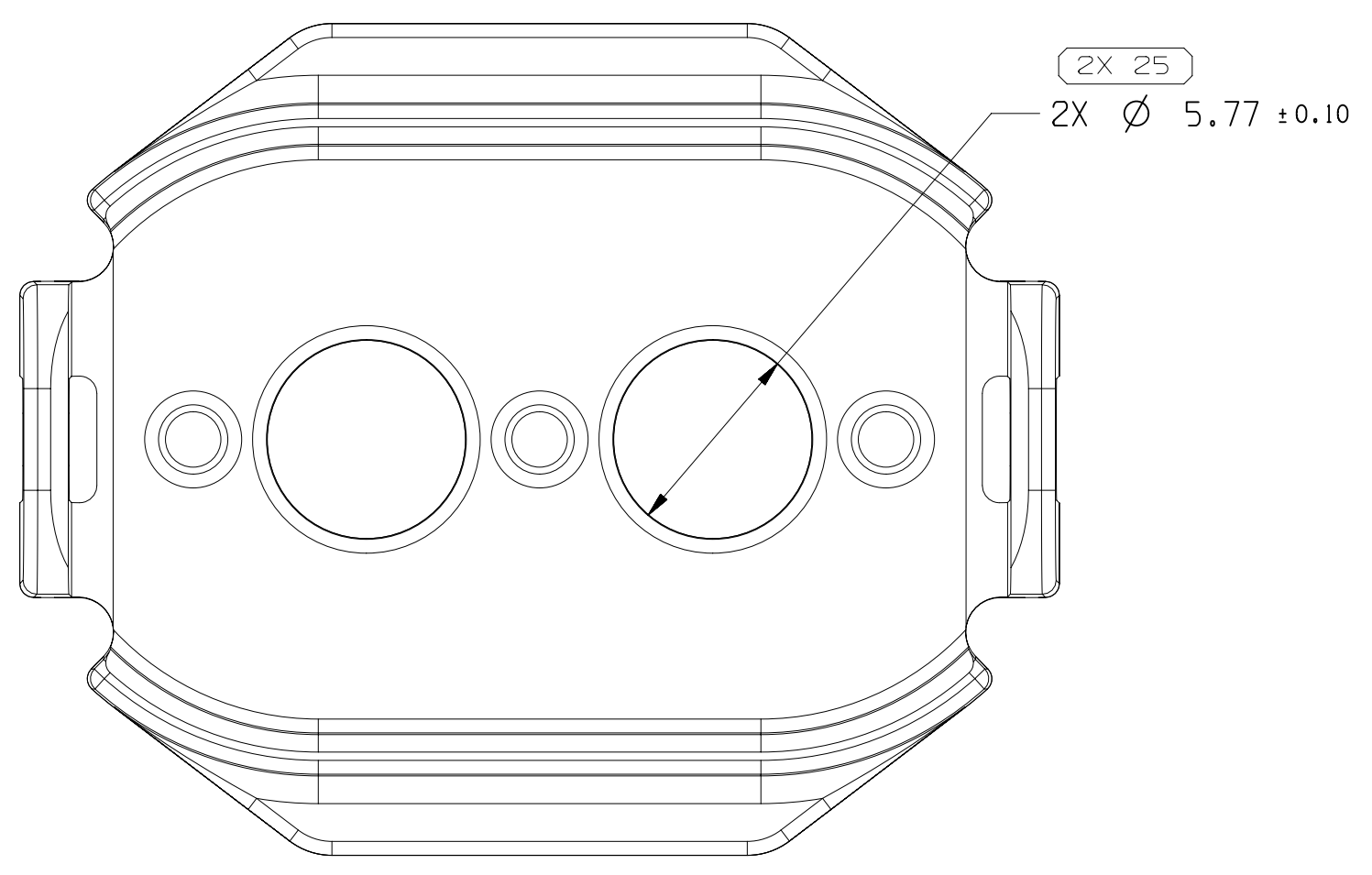
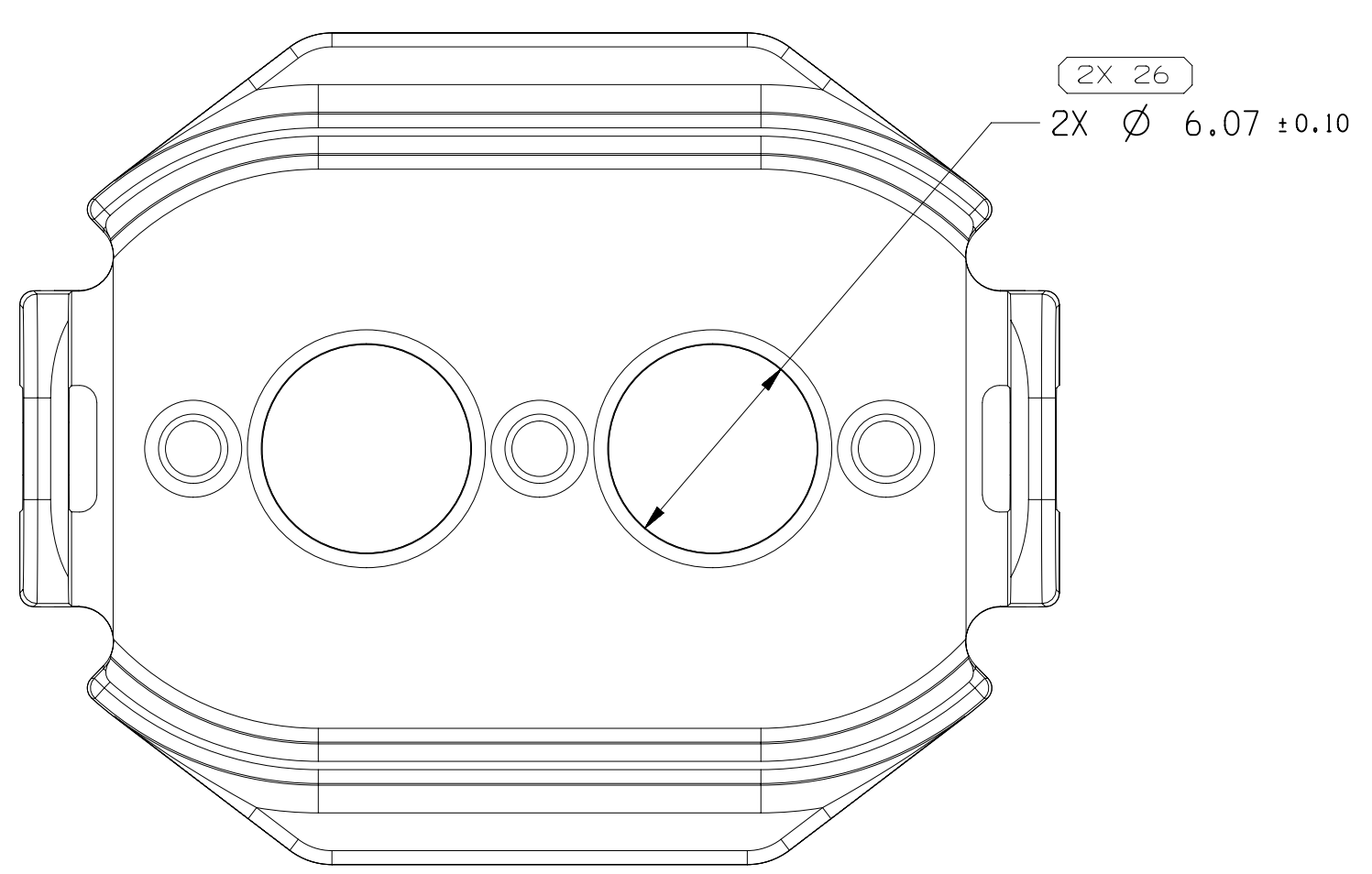


SYMBOL DEFINITION		TOTAL NO OF INSPECTIONS REQUIRED	MISSING SYMBOLS
A	DIMENSION WITHOUT AN INSPECTION REPORT SYMBOL DOES NOT REQUIRE INSPECTION. IT MAY BE CONTROLLED ON THE INDIVIDUAL COMPONENT DRAWING.	31	1 - 10
		LAST NO. USED	27

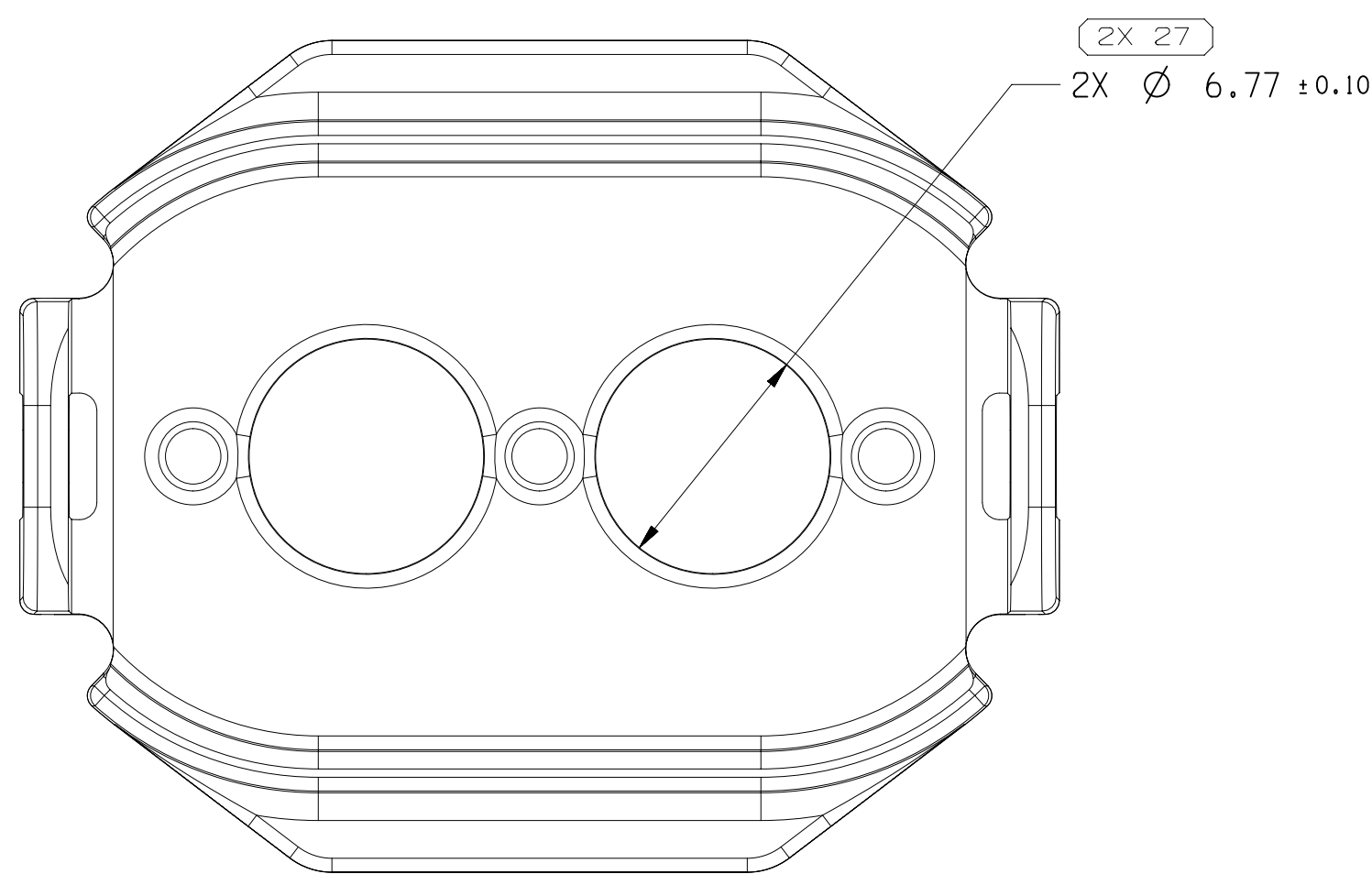
DWG STATUS		ZONE		REVISION HISTORY		AUTH	DR	APVD	APVD
DATE	STG	REV	N/P	CHG					
10AU17	R	01	-	-	CREATED PART DRAWING	437508	BP	SBH	APVD
19AP21	R	02	-	-	ADD CHANGAN P/N	446645	JL	AM	JL



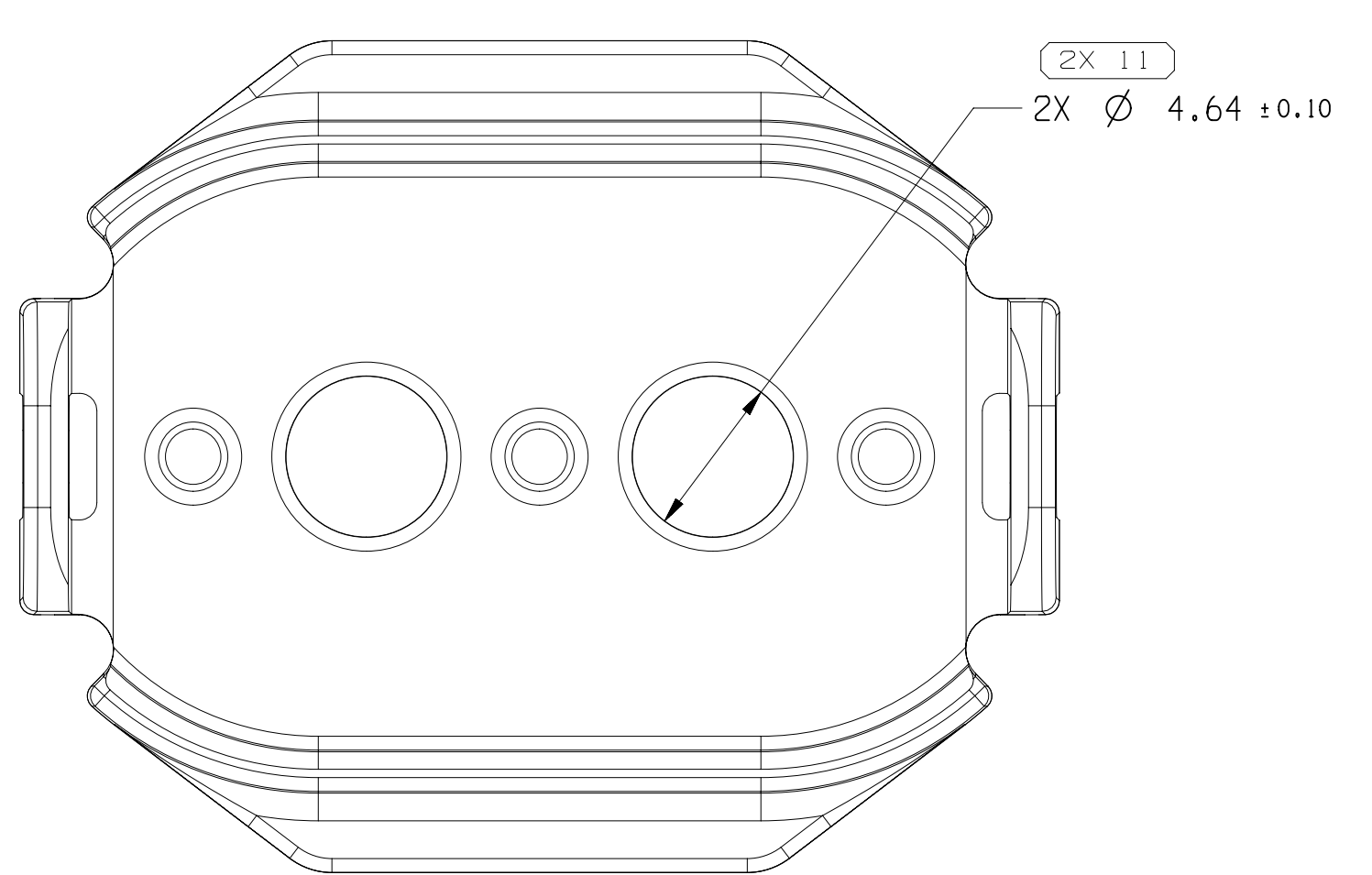
TYPE 106
SAME AS TYPE 101
EXCEPT AS SHOWN



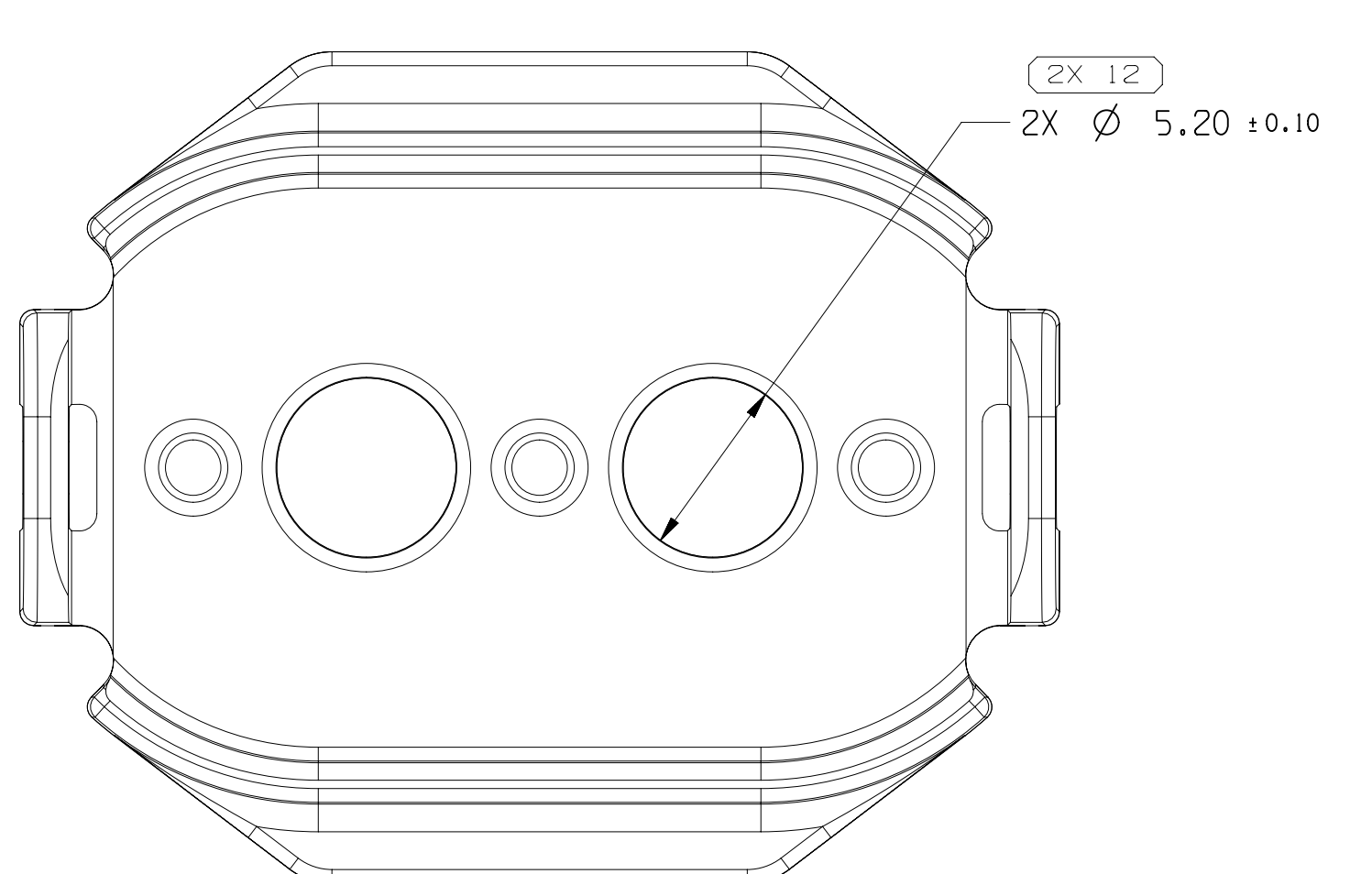
TYPE 105
SAME AS TYPE 101
EXCEPT AS SHOWN



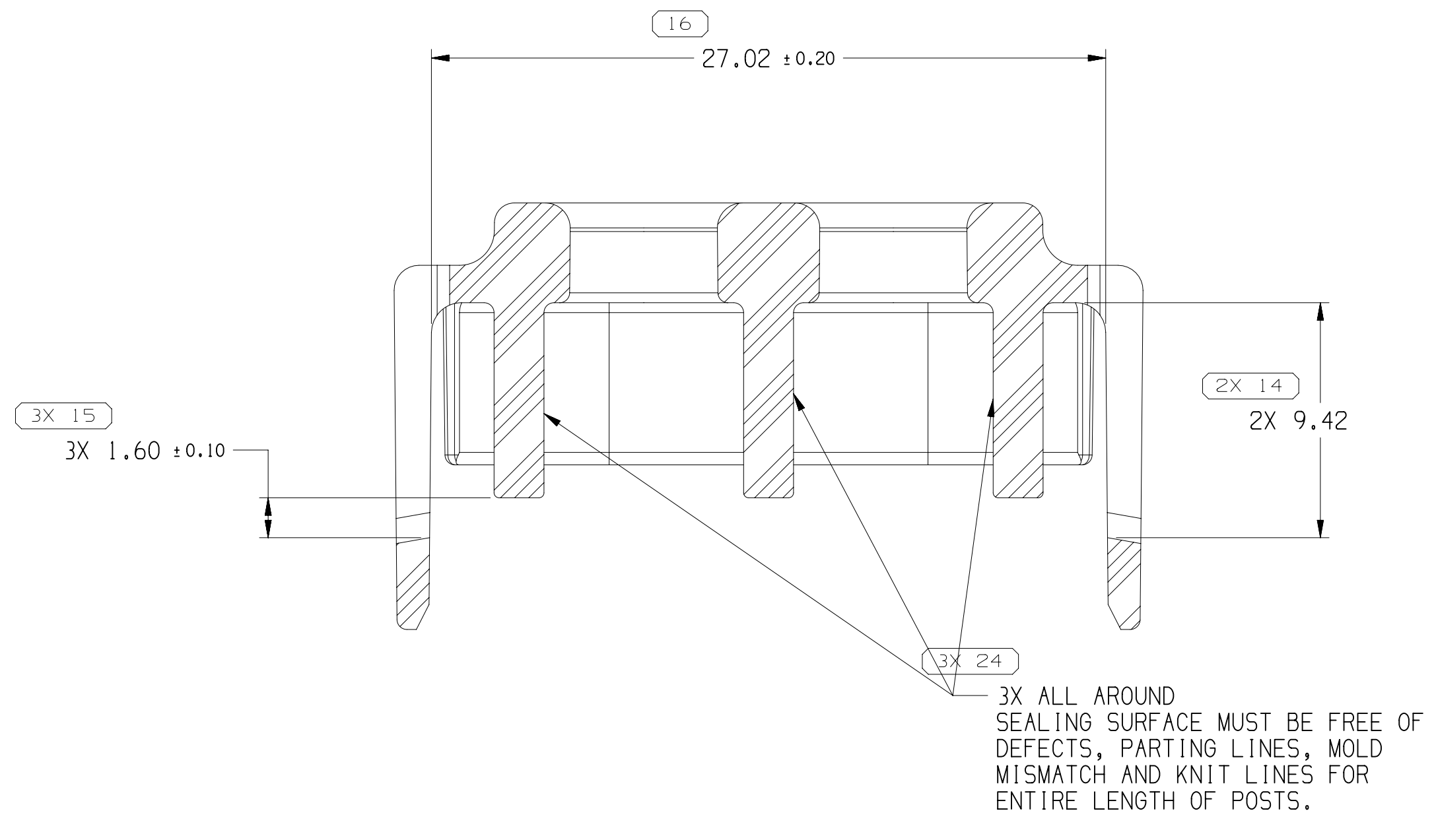
TYPE 104
SAME AS TYPE 101
EXCEPT AS SHOWN



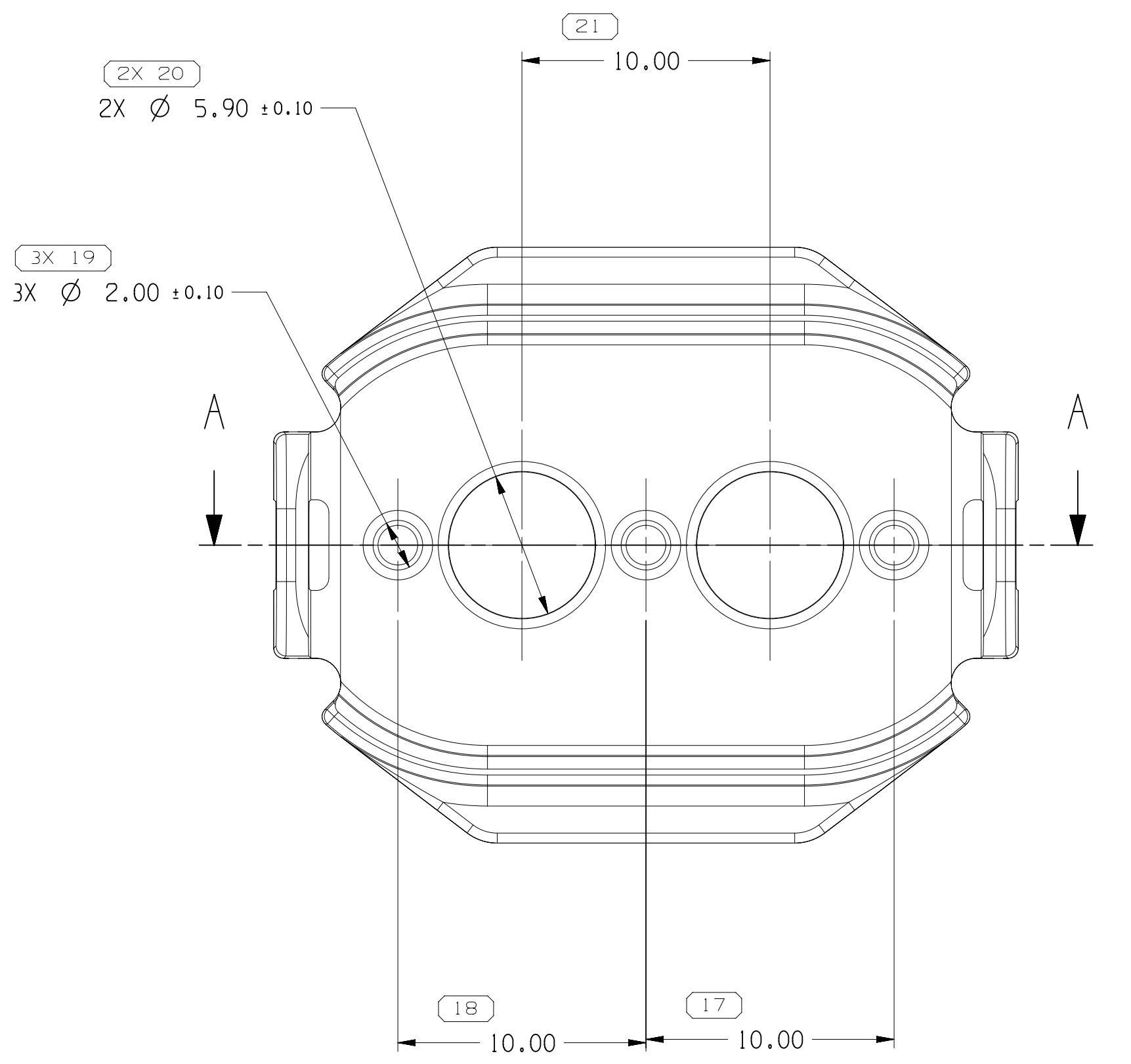
TYPE 103
SAME AS TYPE 101
EXCEPT AS SHOWN



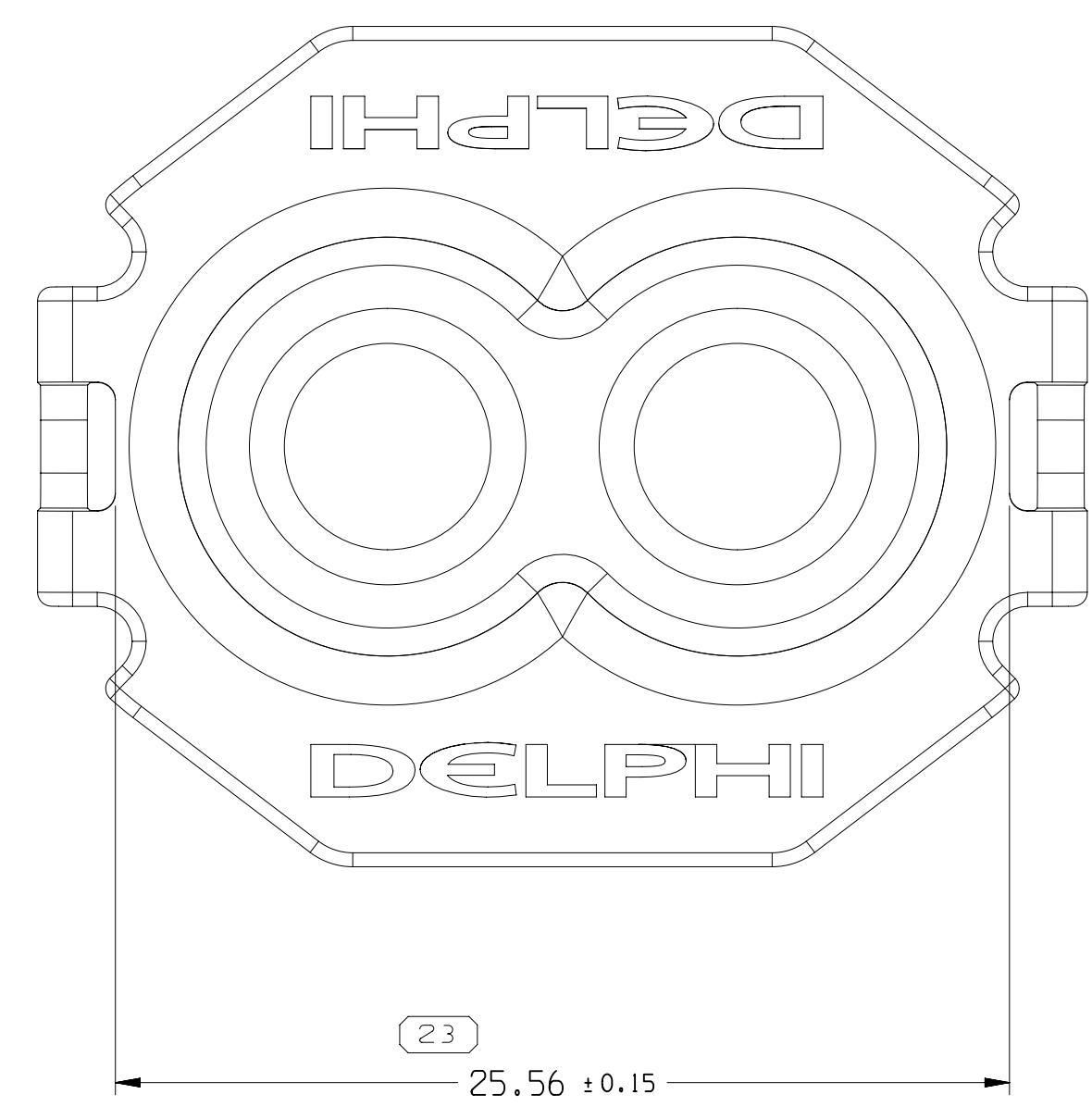
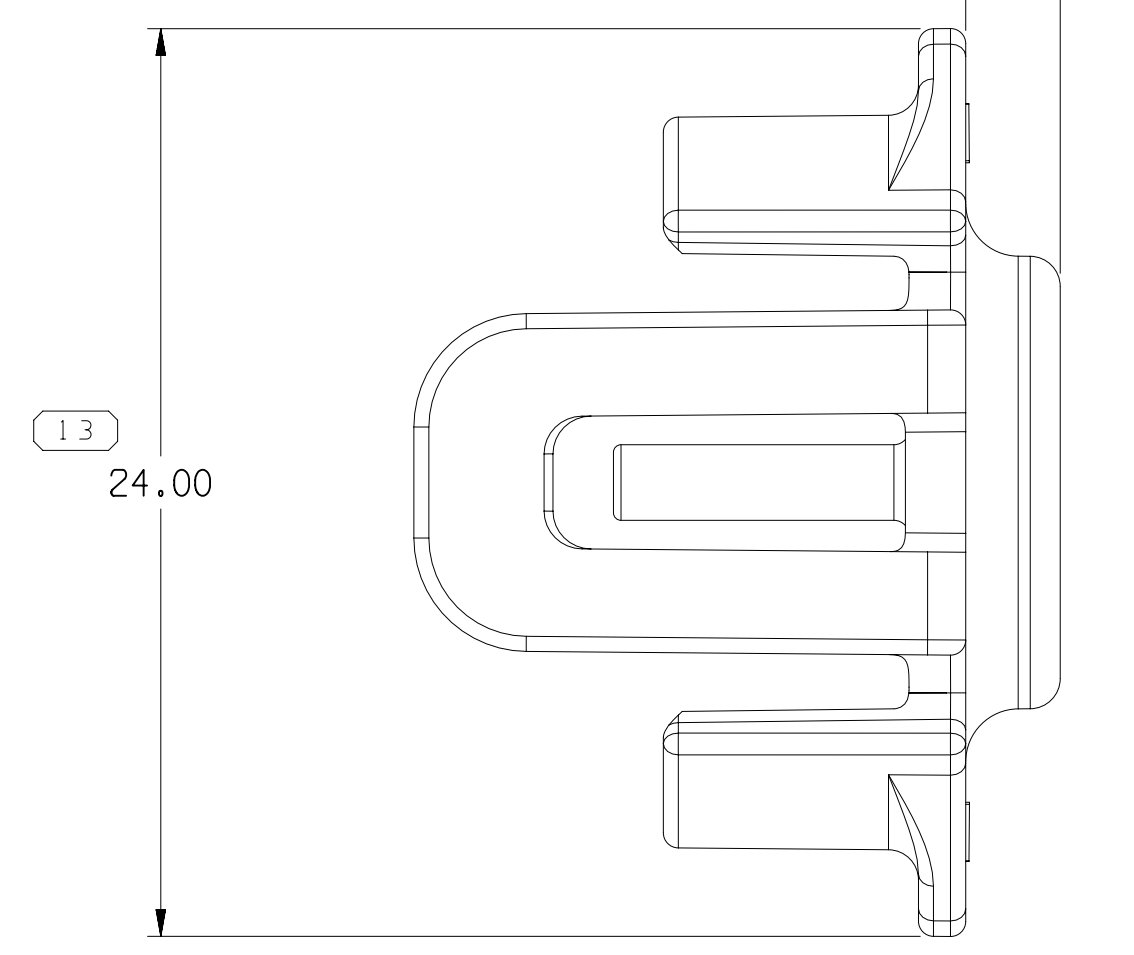
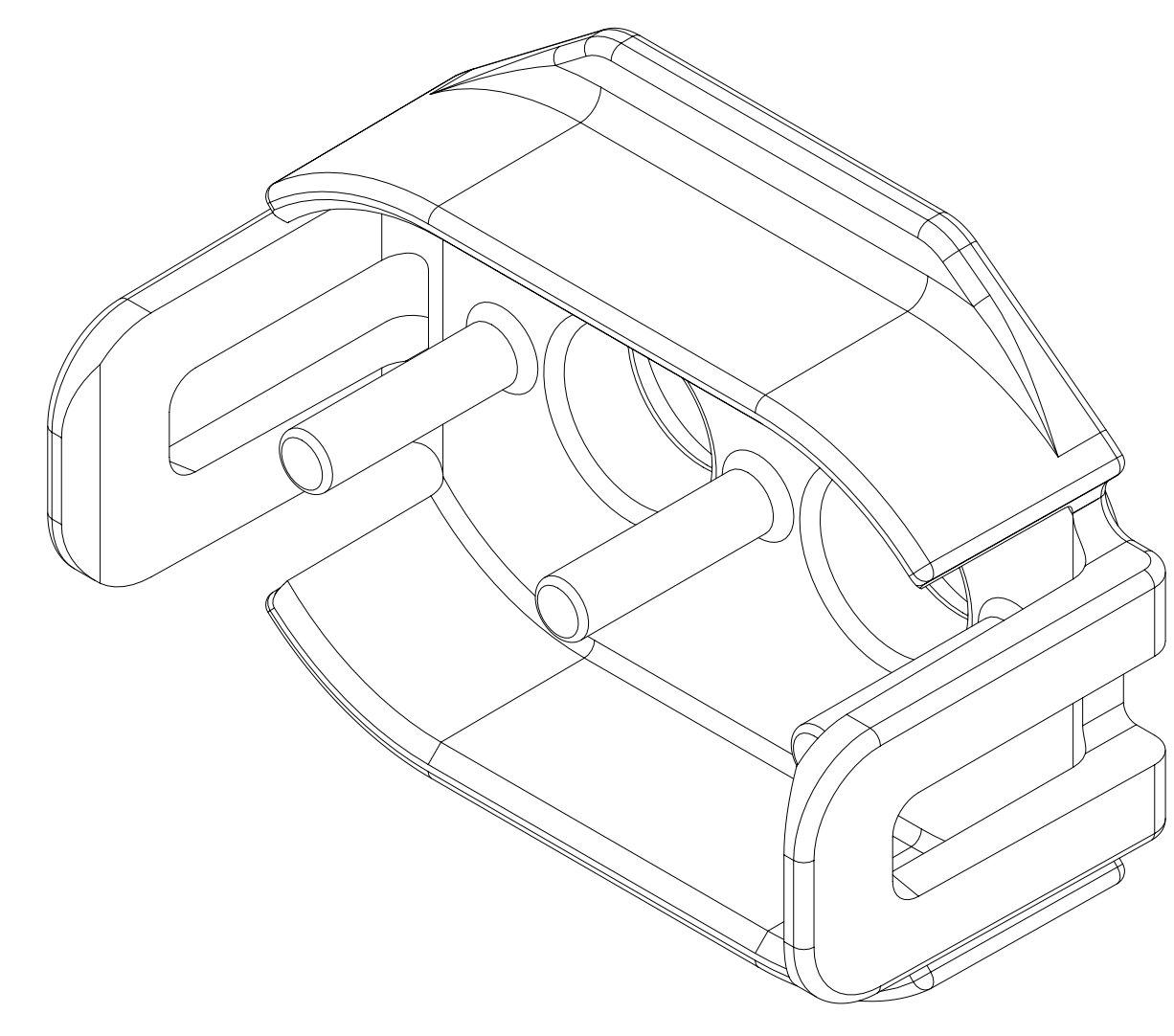
TYPE 102
SAME AS TYPE 101
EXCEPT AS SHOWN



SECTION A - A



TYPE 101



- NOTES
- UNLESS OTHERWISE SPECIFIED AND/OR INDICATED:
DIMENSIONS ARE TO FACE OF VIEW SHOWN AND AUTOMATICALLY ROUNDED BY COMPUTER FOR INSPECTION (SEE MATH MODEL FOR PRECISE DIMENSIONS). FOR ALL OTHER DIMENSIONS NOT SHOWN BUT REQUIRED FOR TOOL BUILD, SEE MATH MODEL FOR PRECISE TOOL PATH DATA.
 - PARTS SHOWN ON THIS DRAWING ACCEPT ASSEMBLIES SHOWN ON TAXI 35106653.
 - 11.51X10.11 DELPHI CORPORATE BRAND TO BE LOCATED ON ANY EXTERIOR SURFACE, PREFERABLY VISIBLE AT FINAL ASSEMBLY.

PART NUMBER	REV	N/P	TYPE	MATERIAL SPECIFICATION	VOL (CM ³)	CABLE OD RANGE	SHIELDED, JACKETED CABLE SIZE	APPLICABLE CABLE SEAL OR EQUIVALENT	REMARK
35116346	01	-	106	POLYESTER COMPOUND BROWN	1.915	5.5 - 5	3 MM ² (ISO)	35120064	
35559415	01	-	105	POLYESTER COMPOUND GRN	1.892	5.8 - 5.3	4 MM ² (ISO)	35028705	CHANGAN P/N
35116345	01	-							
35116344	01	-	104	POLYESTER COMPOUND NAT	1.831	6.5 - 6	5 MM ² (ISO)	35120063	
35116343	01	-	103	POLYESTER COMPOUND GRA	1.986	4.37 - 4.17	2 MM ² (SAE)	35069637	
35559416	01	-	102	POLYESTER COMPOUND ORANGE	1.953	4.93 - 4.73	3 MM ² (SAE)	35028704	CHANGAN P/N
35106555	01	-							
35106556	01	-	101	POLYESTER COMPOUND BLK	1.902	5.66 - 5.4	5 MM ² (SAE)	35069636	

DWG TYPE		PART DRAWING	
STYLE		DISTR CODE	D
VOLUME (CM ³)			

•APTIV•
CONNECTION SYSTEMS
Anqing, China
COPYRIGHT 2021 APTIV, ALL RIGHTS RESERVED.

THIS DRAWING IS THE PROPERTY OF APTIV AND CONTAINS APTIV CONFIDENTIAL INFORMATION. THE REPRODUCTION, DISTRIBUTION AND UTILIZATION OF THIS DOCUMENT OR ITS RELATED CAD DATA, AS WELL AS COMMUNICATION OF ANY CONTENT TO OTHERS, WITHOUT EXPRESS AUTHORIZATION, IS PROHIBITED.

DR	DATE
APVD1 JUN LIN	19AP21
APVD2 ARTHUR MA	19AP21
APVD3 JUN LIN	19AP21
APVD4	
APVD5	

MATERIAL: SEC CHART
SUBSTANCES OF CONCERN AND RECYCLED CONTENT PER APTIV 10949001

DRAWING NAME: TAXI LOCK SECONDARY
DRAWING NUMBER: 35110647

SIZE: A0
SCALE: 5:1
FRAME NO: 1 OF 1
SHEET NO: 1 OF 1
STG REV N/P: R 02 -

DIMENSIONAL RANGE (MM)		TOLERANCE	
FROM	TO	TOLERANCE	UNLESS OTHERWISE SPECIFIED
> 0	> 6	± 0.1	
> 6	> 30	± 0.2	
> 30	> 70	± 0.4	
> 70	> 120	± 0.45	
> 120	> 160	± 0.55	
> 160	> 200	± 0.7	
> 200	> 250	± 0.85	
> 250	> 315	± 1.05	
> 315	> 400	± 1.2	

THIRD ANGLE PROJECTION
DO NOT SCALE
USE MATH DATA