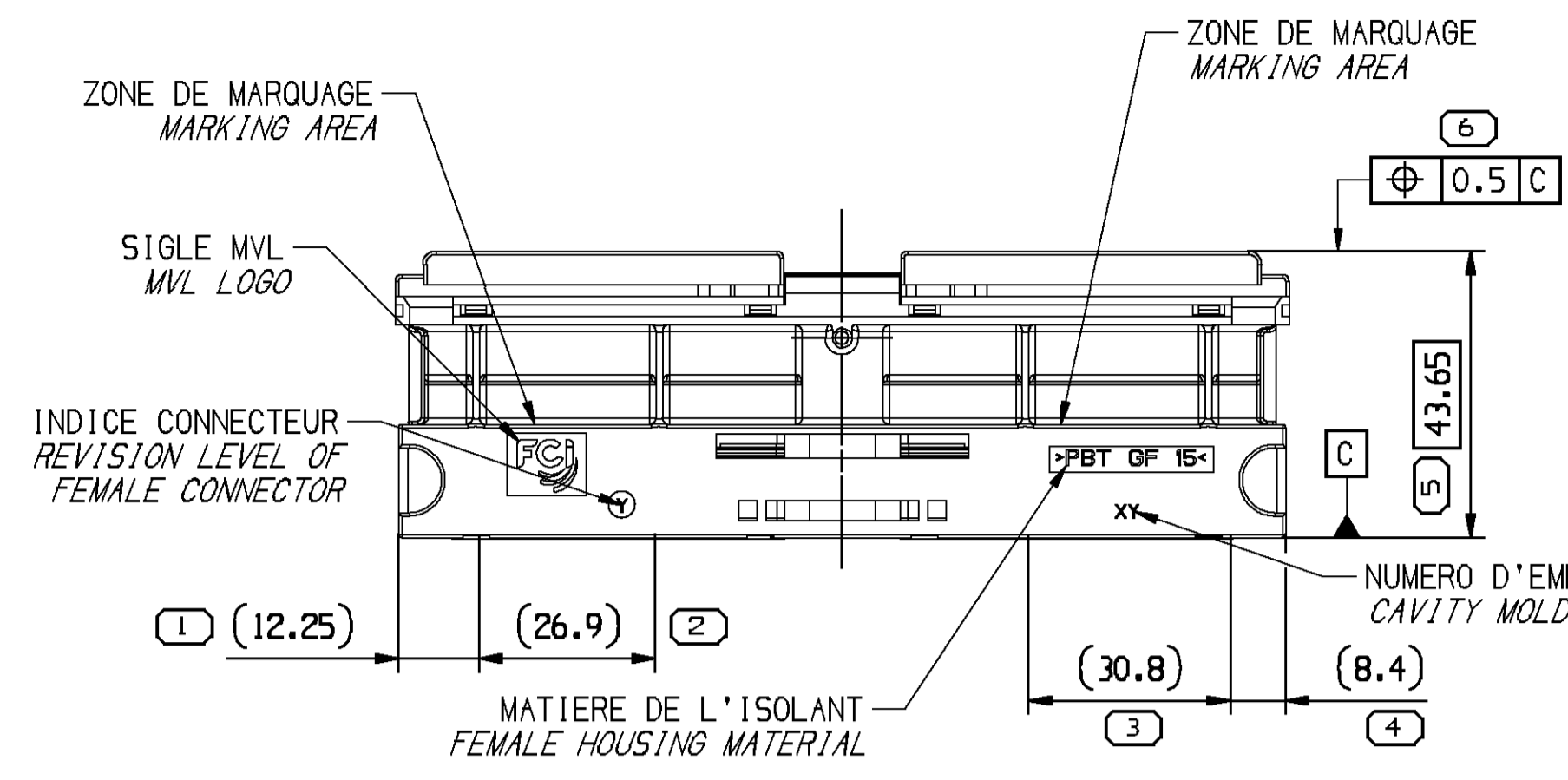
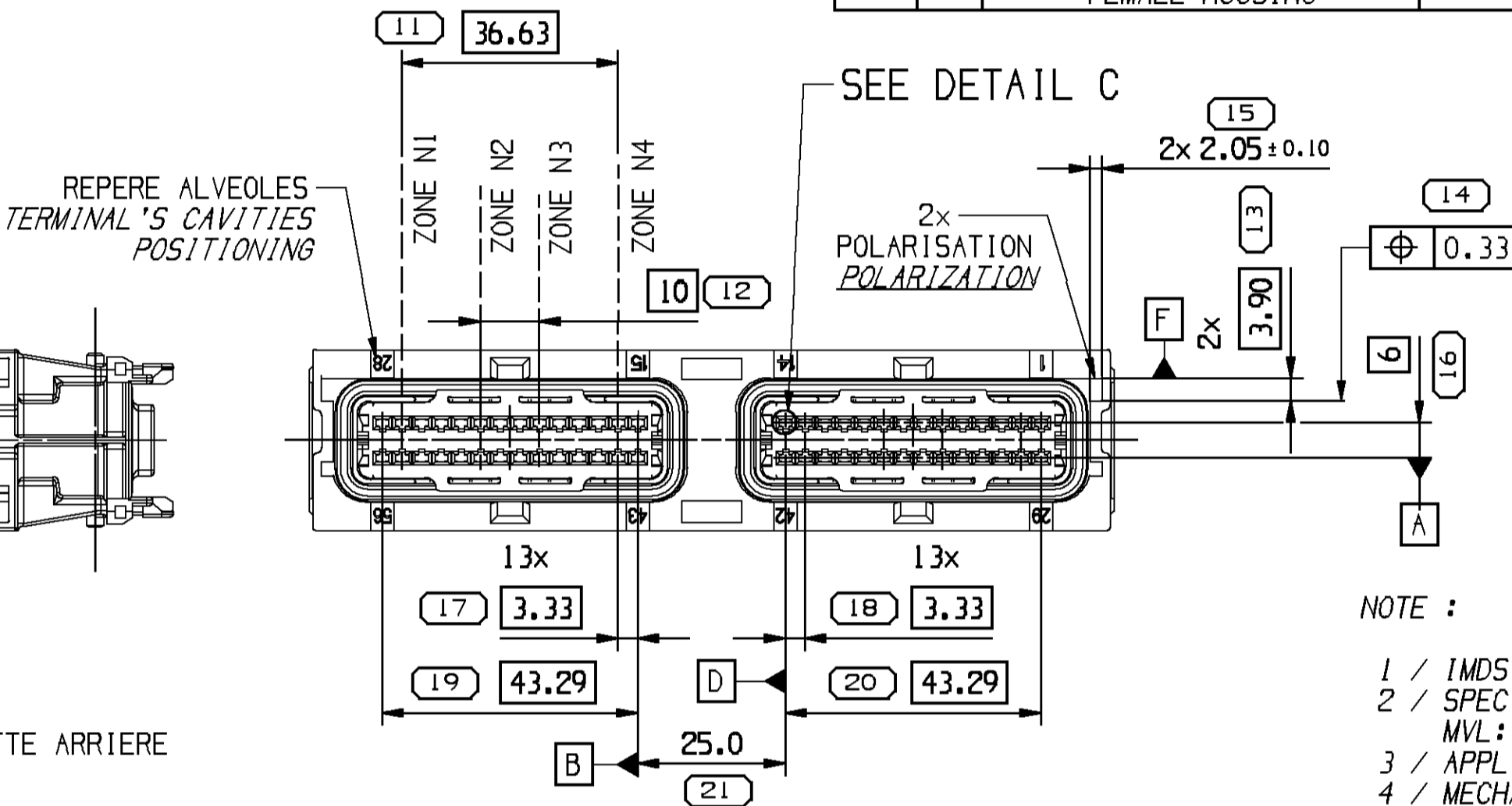
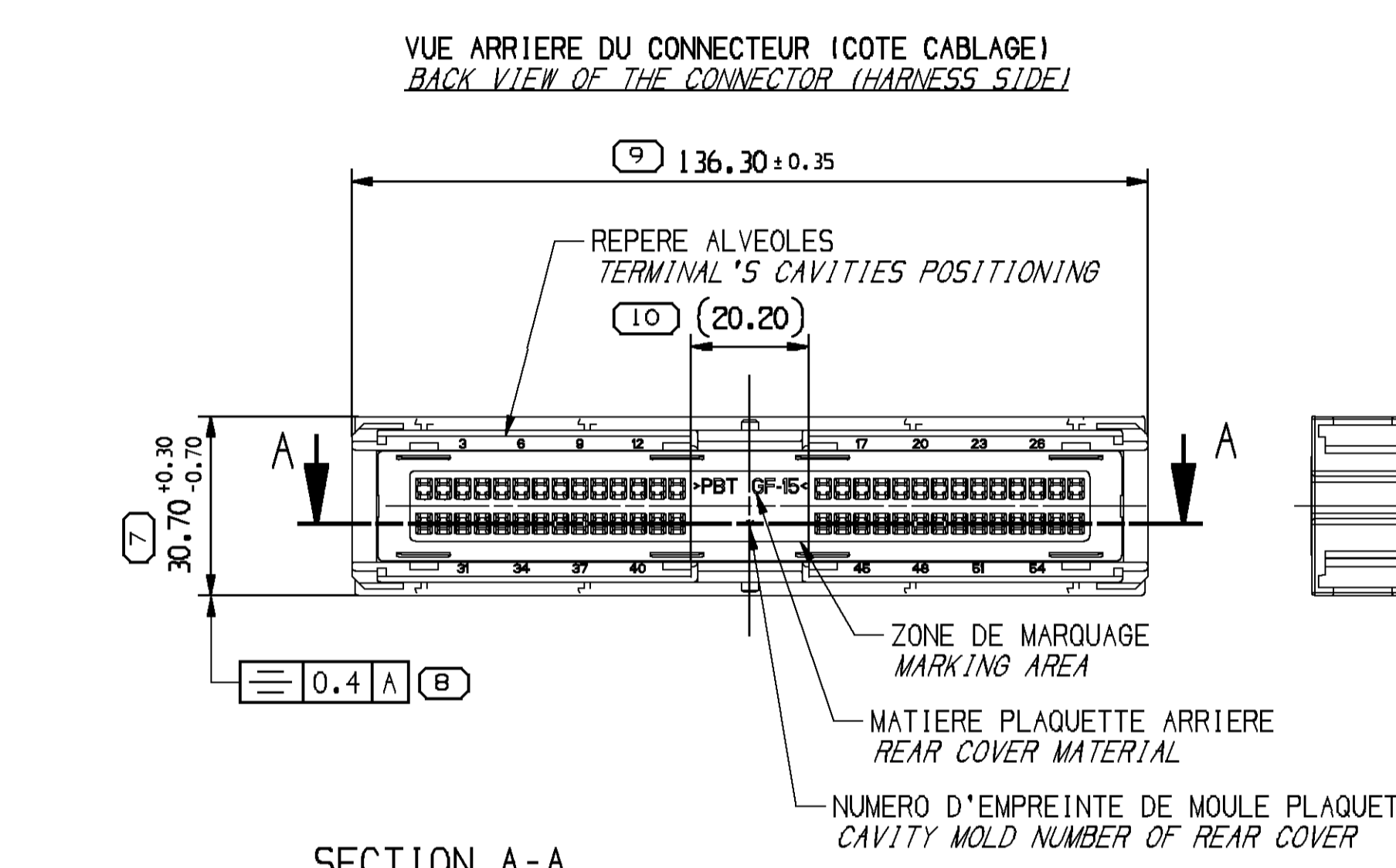


PRODUITS ASSOCIES (POUR INFORMATION) / ASSOCIATED PARTS (FOR INFORMATION)								
CLIPS (DONNE A TITRE INDICATIF) FEMALE TERMINALS (GIVEN FOR INFORMATION)			GAMME 0.5 <sup>2</sup> A 0.7 <sup>2</sup> RANGE 0.5 TO 0.7		GAMME 0.7 <sup>2</sup> A 1.3 <sup>3</sup> RANGE 0.7 TO 1.3		GAMME 1.3 <sup>2</sup> A 2 <sup>2</sup> RANGE 1.3 TO 2	
1.5 SICMA 3+	ETAME/TINNED CLASSE 125*	MVL REF.	REFERENCE MVL MVL PART NUMBER	REFERENCE DELPHI DELPHI PART NUMBER	REFERENCE MVL MVL PART NUMBER	REFERENCE DELPHI DELPHI PART NUMBER	REFERENCE MVL MVL PART NUMBER	REFERENCE DELPHI DELPHI PART NUMBER
			211 CC 2 S 1 I 160 P	10863984	211 CC 2 S 4 I 160 P	10865152	211 CC 2 S 2 I 160 P	10863985
DESIGNATION DESCRIPTION			REFERENCE MVL MVL PART NUMBER	REFERENCE DELPHI DELPHI PART NUMBER	REFERENCE MVL MVL PART NUMBER	REFERENCE DELPHI DELPHI PART NUMBER	PLAN CLIENT CUSTOMER DRAWING	
PORTE-LANGUETTES CODAGE NOIR MALE CONNECTOR BLACK CODING			F135200	33511394	PCC0577534		33511394	
CAPOT GUIDE-FILS WIRE COVER			211 A 56 0 008	10775755	211 FT 0236		33512090	
ETRIER SLIDER			211 A 56 7 007	10775756	211 FT 0127		-	
BOUCHON PLUG			F180100	13729227	PCC0557191		33521947	

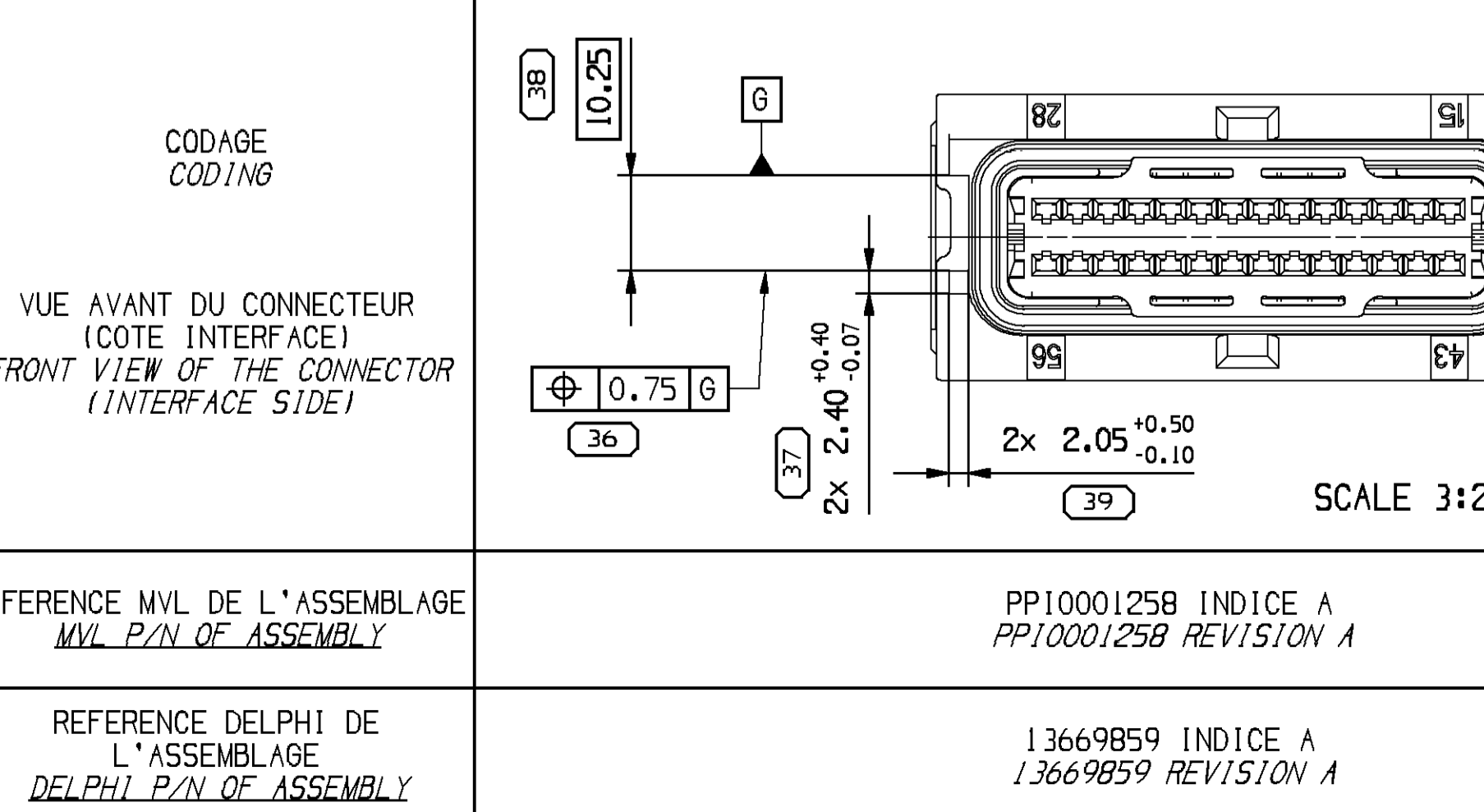
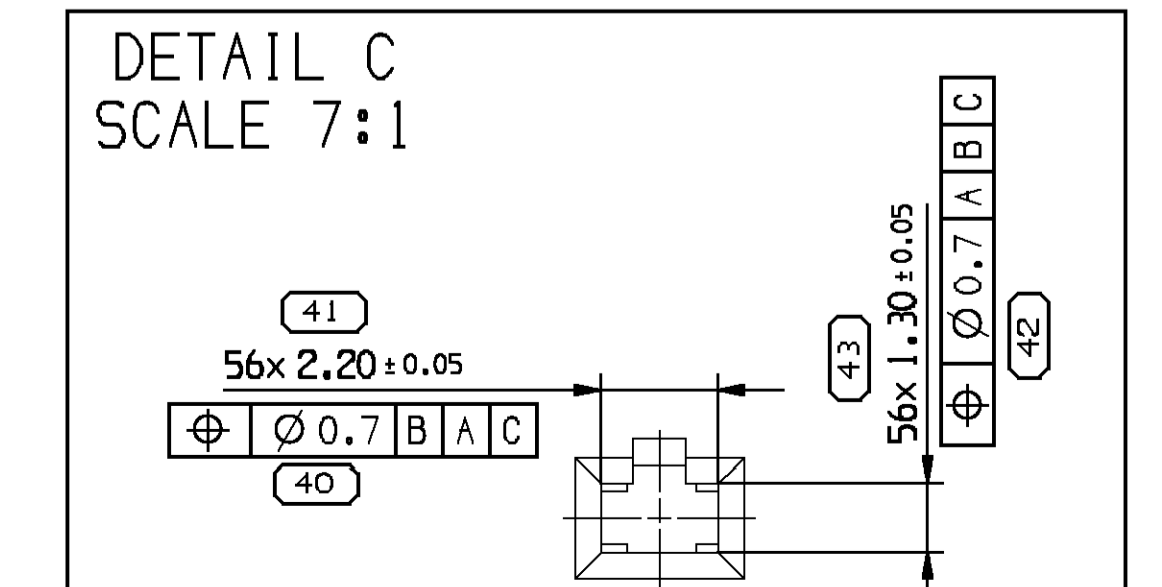
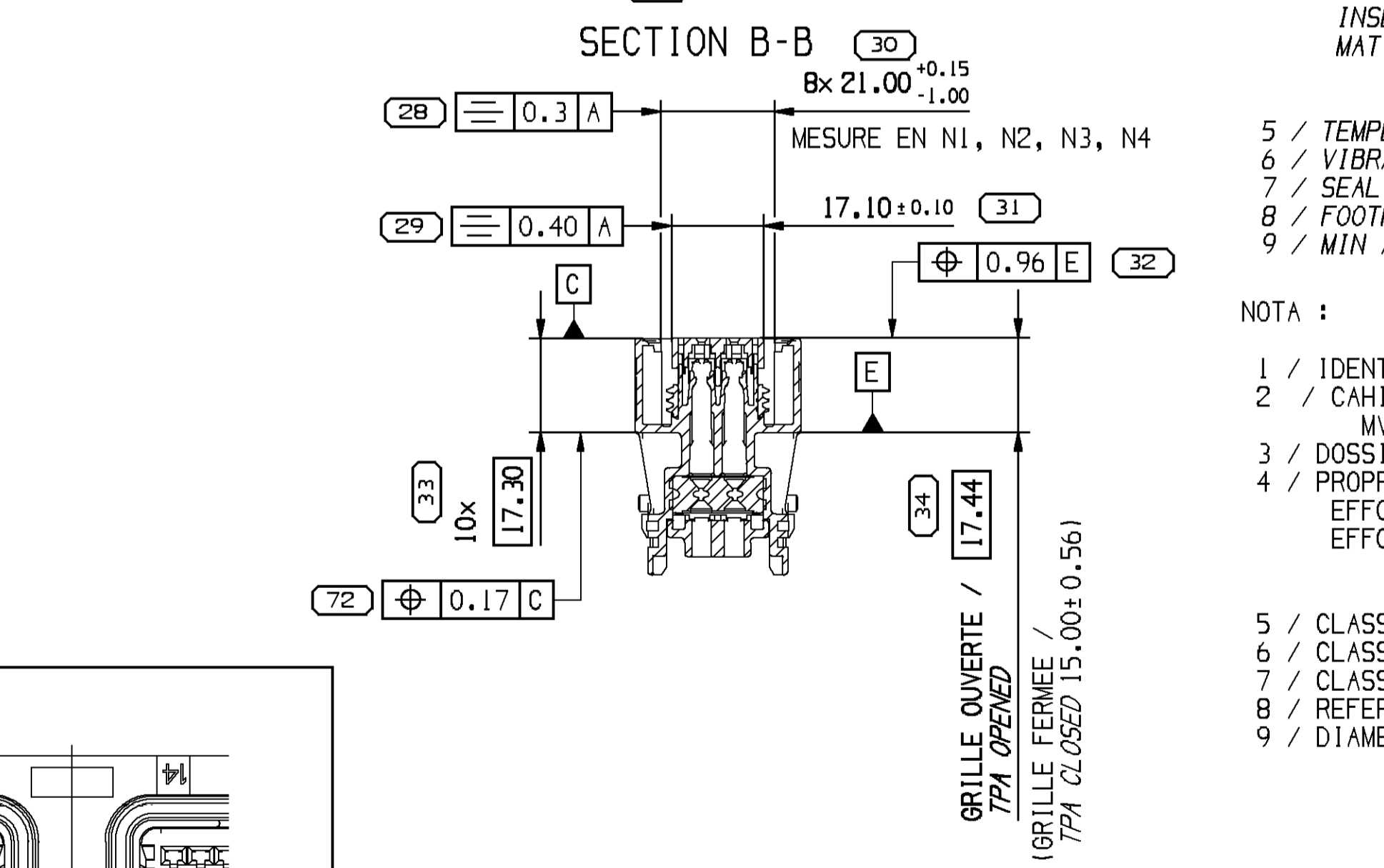
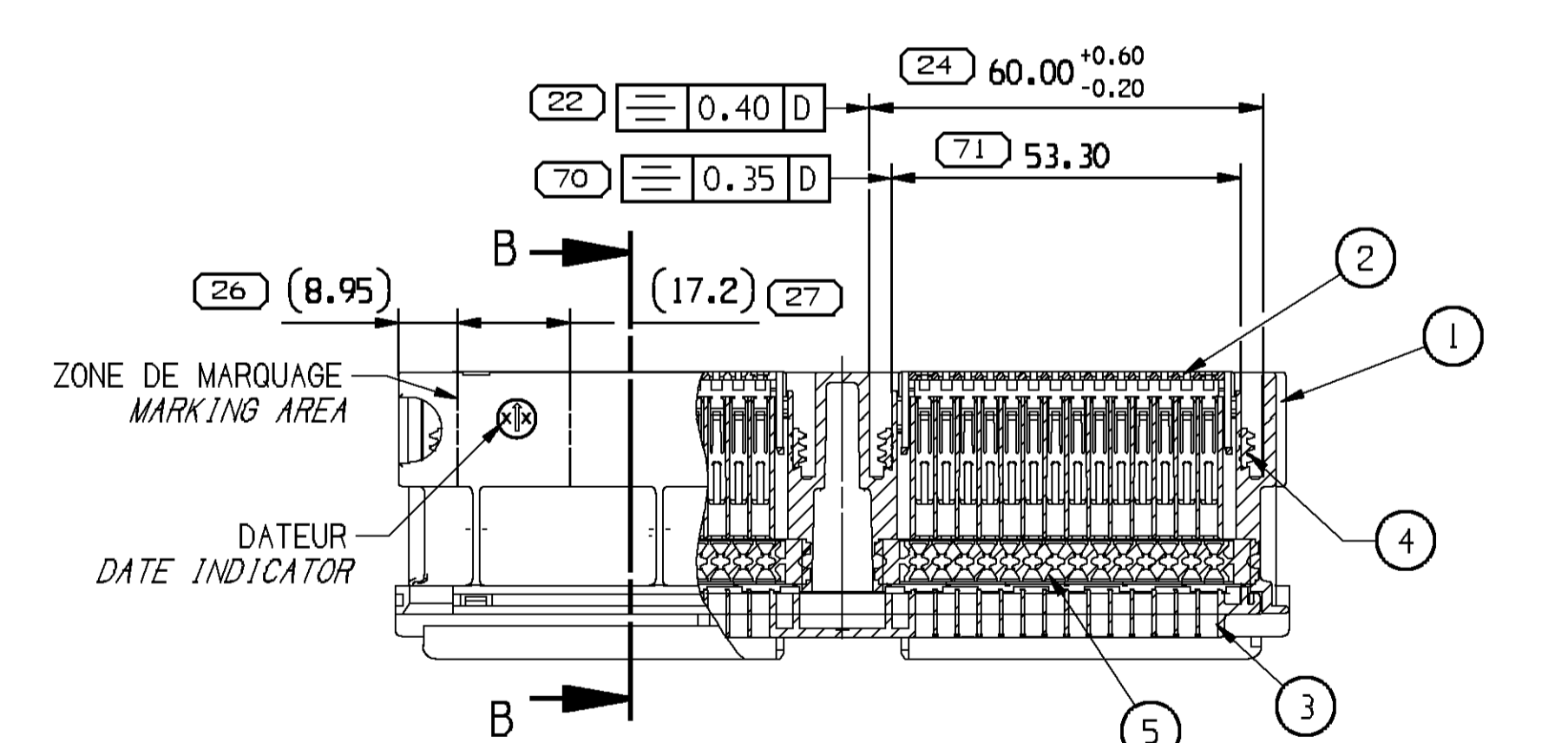
DWG STATUS				ZONE		REVISION HISTORY		AUTH	DR	APVD 1	APVD 2
DATE	ISTG	REV	P/CHG								
23FE16	R	01				FILE TRANSFERRED FROM MVL SYSTEM REDRAWN IN NX				V DUR	P.MEN/P.MEN
07MR16	R	02				DELPHI PART NUMBER ADDED  TOLERANCE WAS CHANGED FROM +.11/-0.70 TO +.11/-1.00  DIMENSION 43.33 BECOMES 43.29 DIMENSION 36.76 BECOMES 36.63				L.R.S	P.MEN/P.MEN



NOMENCLATURE / PARTS LIST						
REP. ITEM	QTY	DESIGNATION DESCRIPTION	MATIERE MATERIAL	COULEUR COLOR	REF. MVL MVL P/N	REF. DELPHI DELPHI P/N
5	2	ORONNET MATTE SEAL	(44) SILICONE SILICON	TRANSLUCIDE TRANSLUCENT	PP10001235	33503367
4	2	JOINT INTERFACIAL INTERFACE SEAL	(45) SILICONE SILICON	VERT GREEN	211 M 027	33508037
3	1	PLAQUETTE ARRIERE REAR COVER	(46) PBT 15% FV PBT GF 15	NOIR BLACK	PP10001233	33508242
2	2	GRILLE GRID TPA	(47) PBT 15% FV PBT GF 15	JAUNE YELLOW	211 M 4 025	33508046
1	1	ISOLANT PORTE-CLIPS FEMALE HOUSING	(48) PBT 15% FV PBT GF 15	NOIR BLACK	PP10001232	33508241



- NOTE :
- 1 / IMDS ID : 62629333 / 1
  - 2 / SPECIFICATIONS : MVL : FE PS 11-002
  - 3 / APPLICATION SPECIFICATION : PU112
  - 4 / MECHANICAL PROPERTIES : INSERTION FORCE OF A CONTACT : 12N MAXI MATING FORCE ON COUNTER-PART : FEMALE CONNECTOR CABLING RATE 63% : 150N MAXI FEMALE CONNECTOR CABLING RATE 100% : 185N MAXI
  - 5 / TEMPERATURE CLASS : CLASS 2 (-40° C ; +100° C)
  - 6 / VIBRATION CLASS : CLASS 1
  - 7 / SEALING CLASS : CLASS 2
  - 8 / FOOTPRINT DRAWING P/N : MVL : 211 FT 0137 REV D
  - 9 / MIN AND MAXI WIRE DIAMETRE TO USED : 1.4 TO 2.7



UNLESS OTHERWISE SPECIFIED

GENERAL TOLERANCES ACCORDING TO: SEE TABLE

GD&T ACCORDING TO: SEE TABLE

DO NOT SCALE USE MATH DATA

DATE: 06-Jul-16 Time: 13:58

**DELPHI**  
DELPHI PACKARD ELECTRICAL/ELECTRONIC ARCHITECTURE  
Chennai, India

COPYRIGHT 2012 DELPHI CORPORATION AND/OR ITS AFFILIATES. ALL RIGHTS RESERVED.  
REVISED 2016

THIS DRAWING IS THE PROPERTY OF DELPHI CORPORATION AND CONTAINS DELPHI CONFIDENTIAL INFORMATION. THE REPRODUCTION, DISTRIBUTION AND UTILIZATION OF THIS DOCUMENT OR ITS RELATED CAD DATA, AS WELL AS COMMUNICATION OF ANY CONTENT TO OTHERS, WITHOUT EXPRESS AUTHORIZATION, IS PROHIBITED.

CE PLAN EST LE PROPRIETE DE DELPHI CORPORATION ET CONTIENT DES INFORMATIONS DELPHI CONFIDENTIELLES. LA REPRODUCTION, LA DISTRIBUTION ET L'UTILISATION DE CE DOCUMENT OU DE SES DONNEES MATHÉMATIQUES CAD, ANSI QUE LA COMMUNICATION DE TOUT CONTENU À AUTRUI, SANS AUTORISATION EXPRESSE EST INTERDITE.

DR	S TRANCART	DATE	30JA08
APVD1	F FAURIE	11SE12	
APVD2	RAINER SCHMIDT	12SE12	
APVD3	PASCAL MENARD	12SE12	
APVD4			
APVD5			

SUBSTANCES OF CONCERN AND RECYCLED CONTENT PER DELPHI 10949001  
MATERIALS PROSCRIBED ET CONTENU RECYCLABLE SELON DELPHI 10949001

MATERIAL: SEE TABLE

DRAWING NAME: 56 W SEALED FEMALE CONNECTOR

DRAWING NUMBER: 13669859

SIZE	SCALE	FRAME NO	SHEET NO	STG	REV	N/P
A1	1:1	1 OF 1	1 OF 1	R	02	