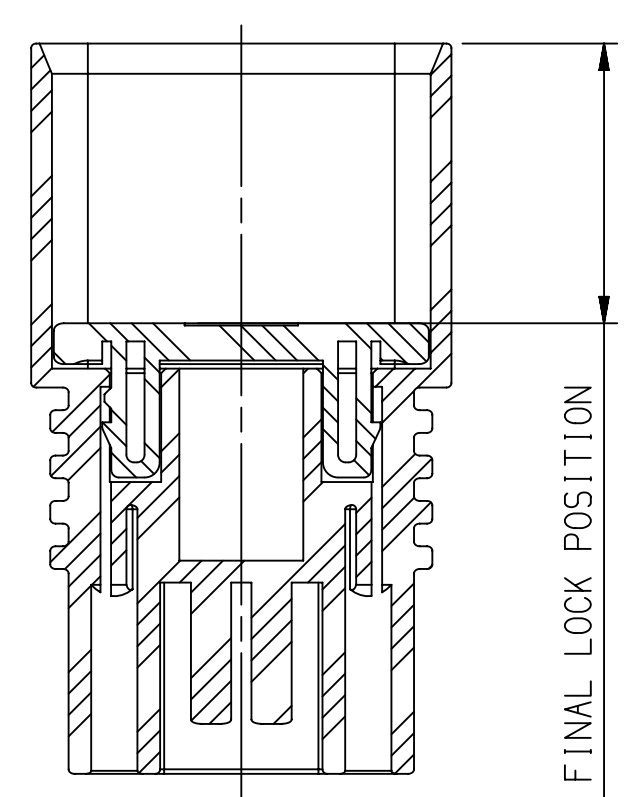
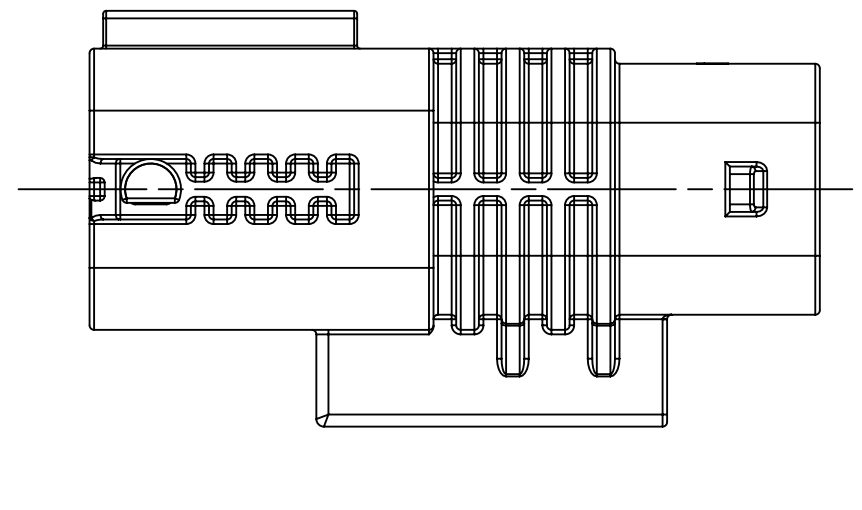
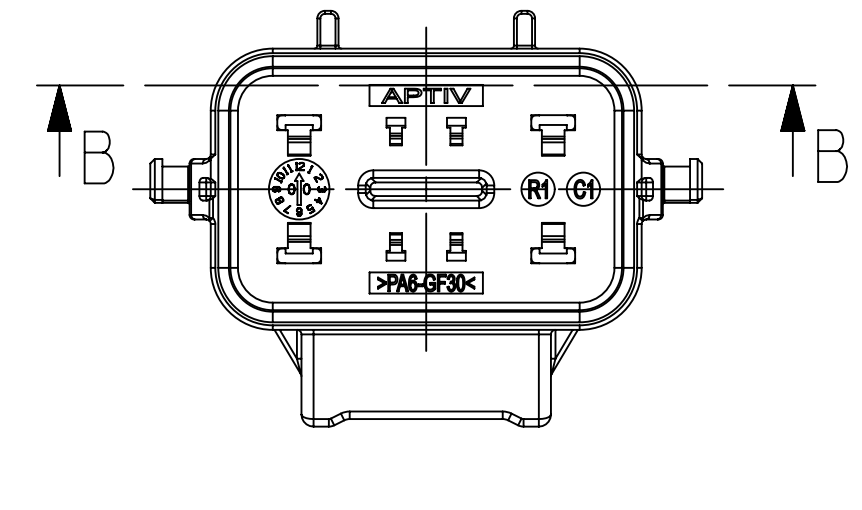


SECTION A-A

16.2 TPA PRE-LOCK POSITION

SCALE 2:1

TPA PRE-LOCK POSITION



SECTION B-B

18.5 TPA FINAL-LOCK POSITION

SCALE 2:1

TPA FINAL-LOCK POSITION

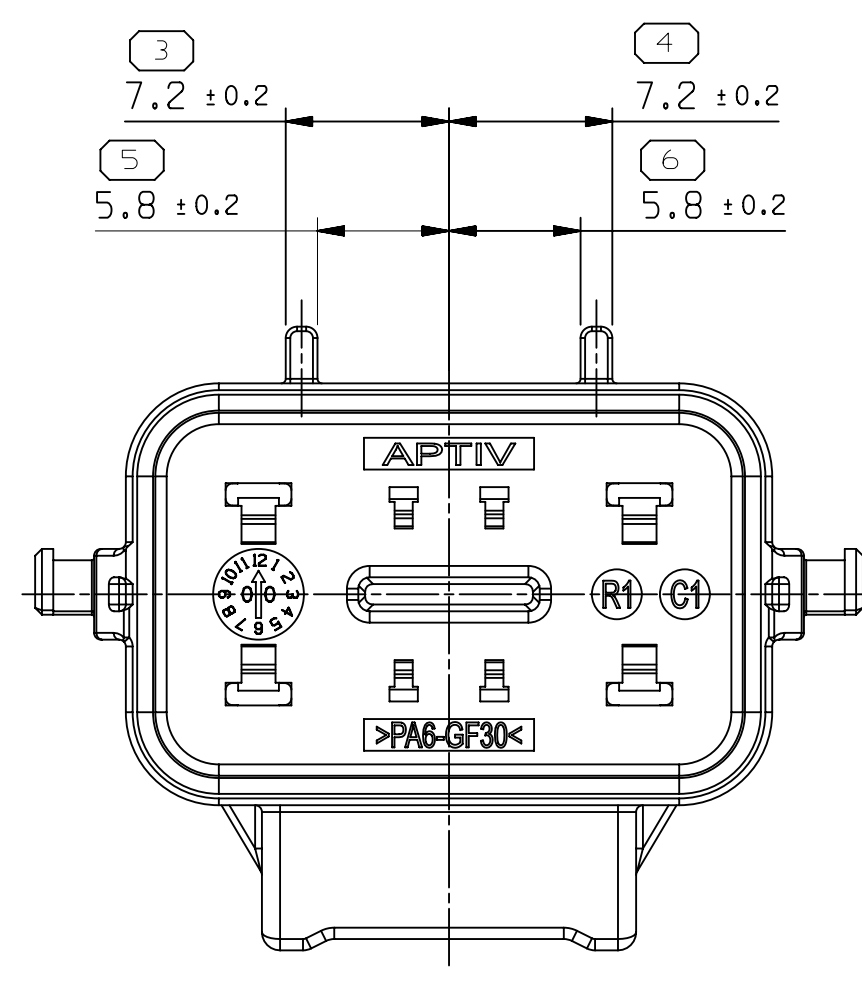
SYMBOL DEFINITION

A DIMENSION WITHOUT AN INSPECTION REPORT SYMBOL DOES NOT REQUIRE INSPECTION. IT MAY BE CONTROLLED ON THE INDIVIDUAL COMPONENT DRAWING.

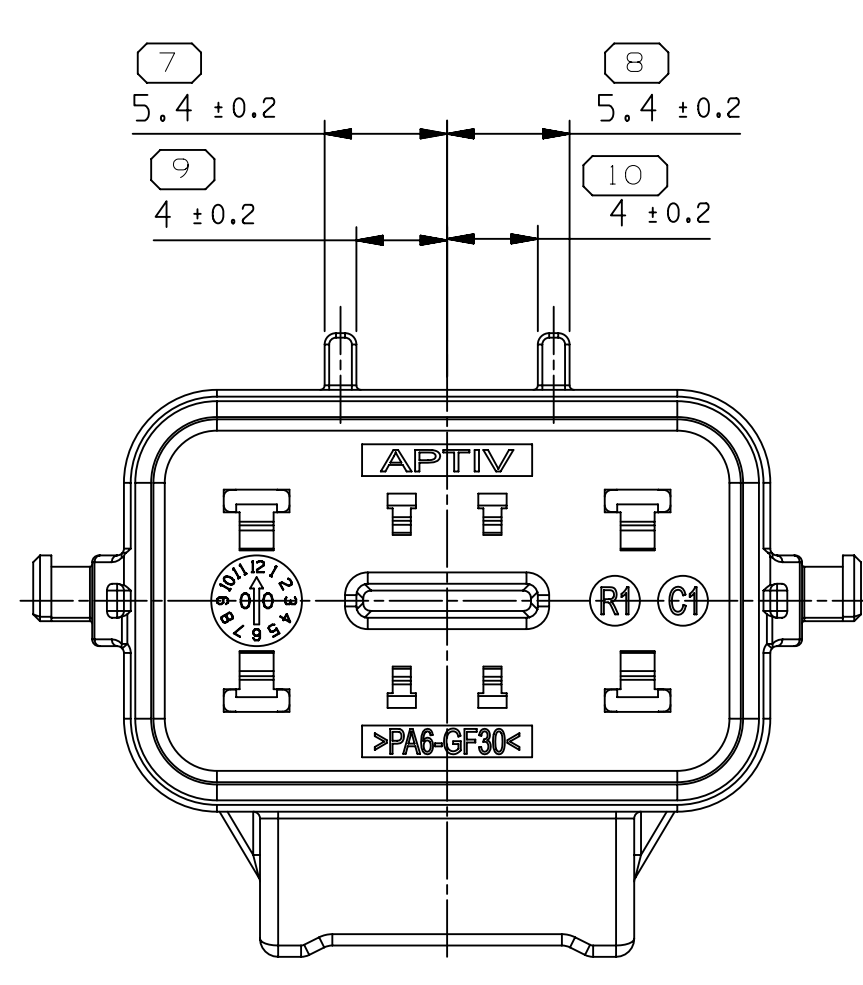
TOTAL NO. OF INSPECTIONS REQUIRED	3X
LAST NO. USED	26

MISSING SYMBOLS
NO MISSING SYMBOL NUMBER

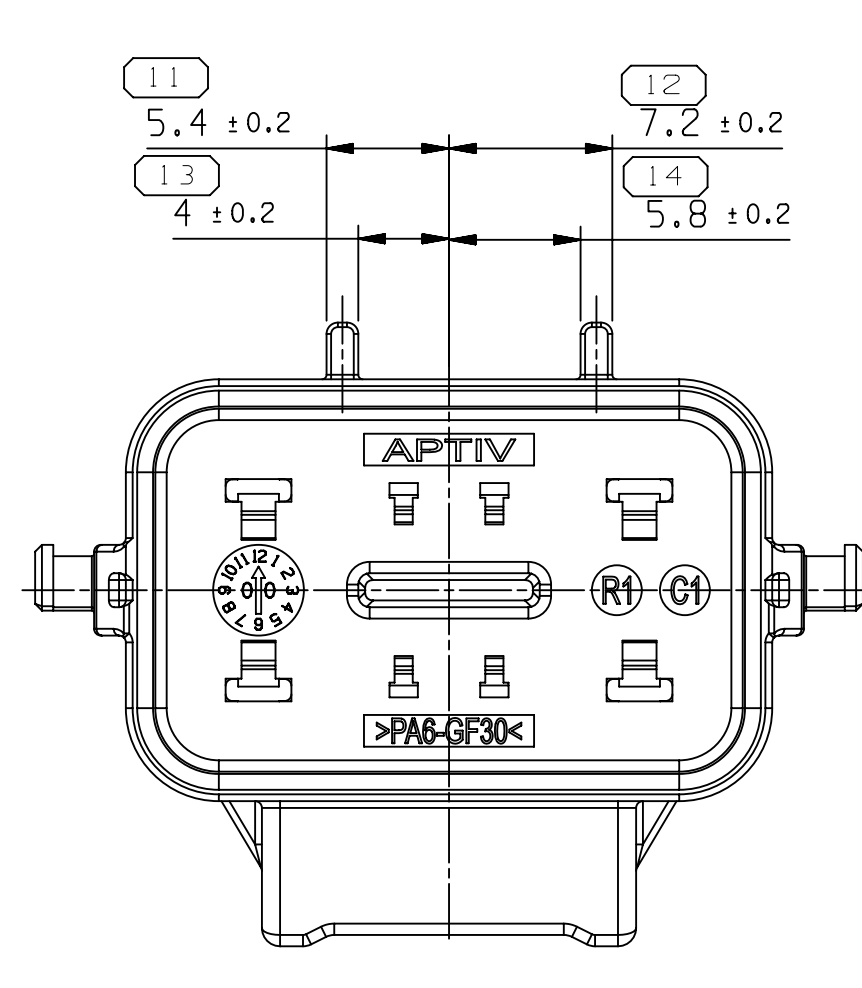
EXPLODED VIEW
SCALE 2:1



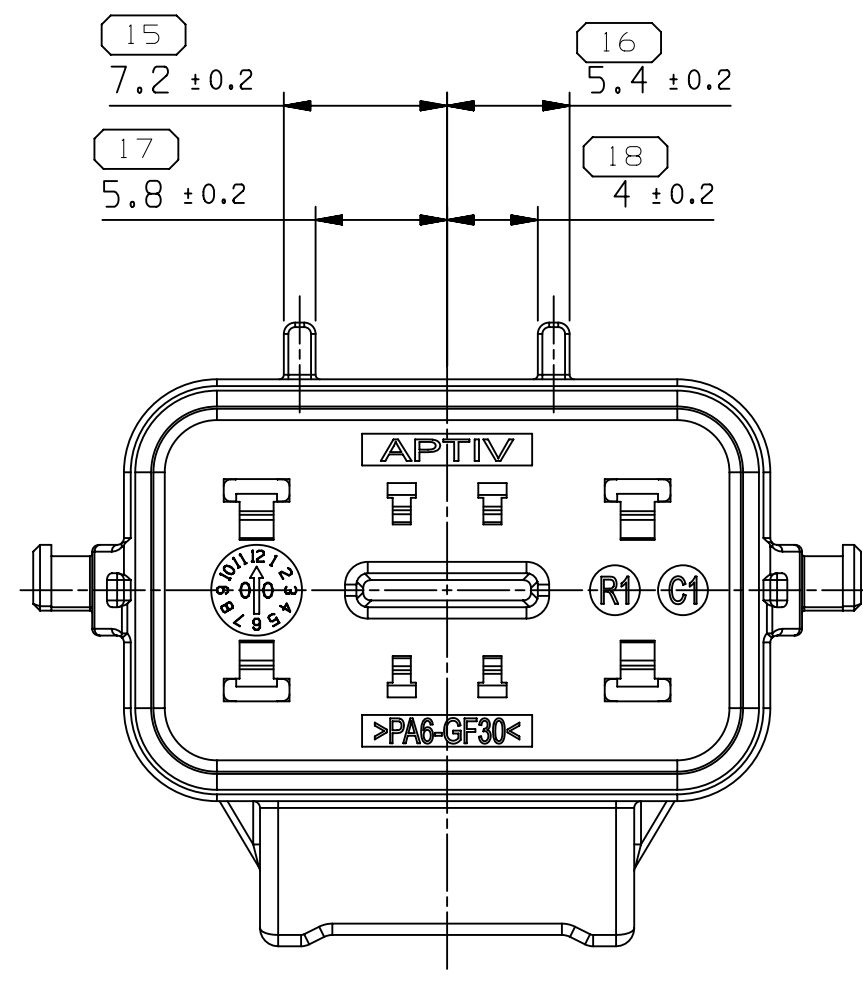
CODE A



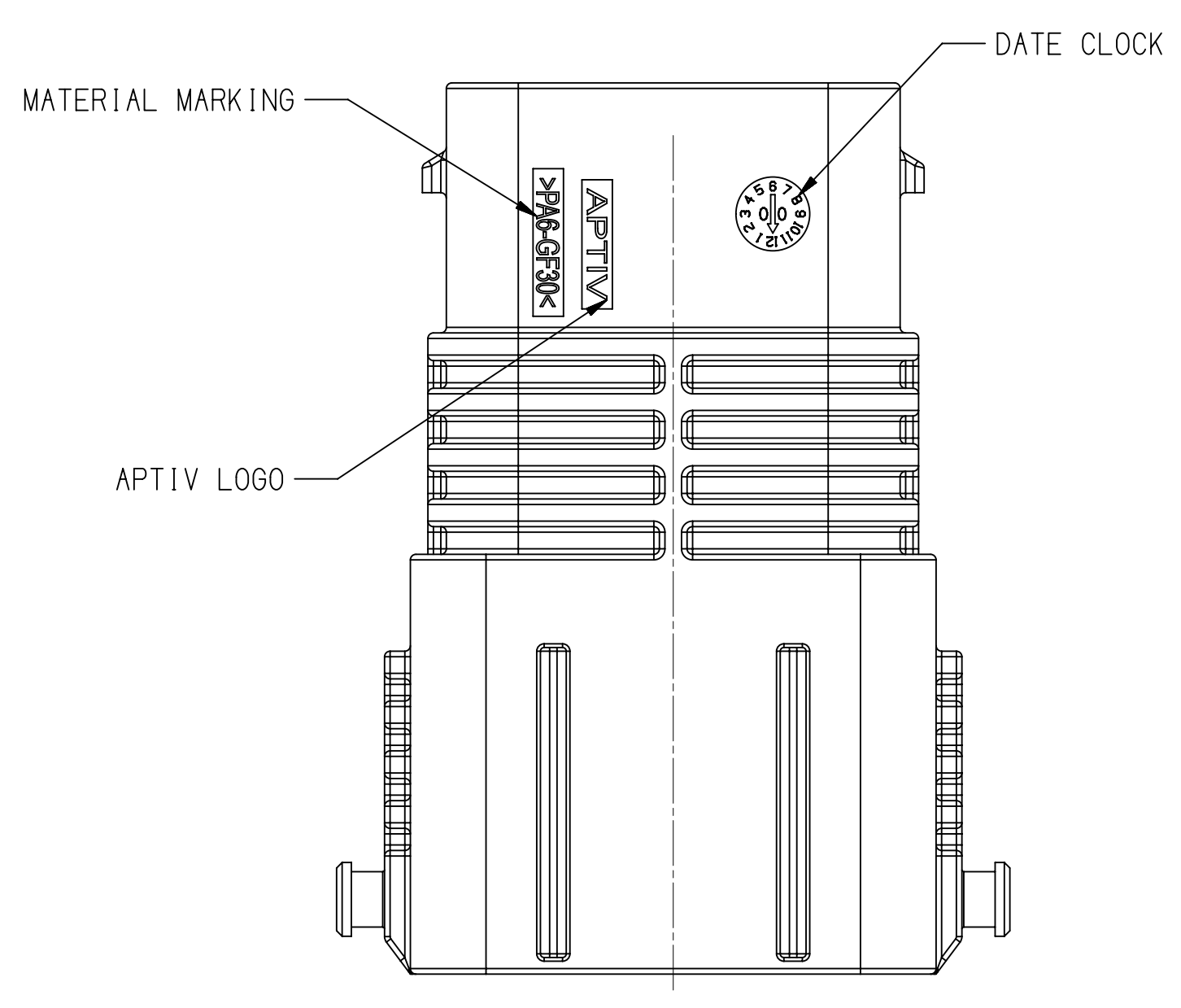
CODE B



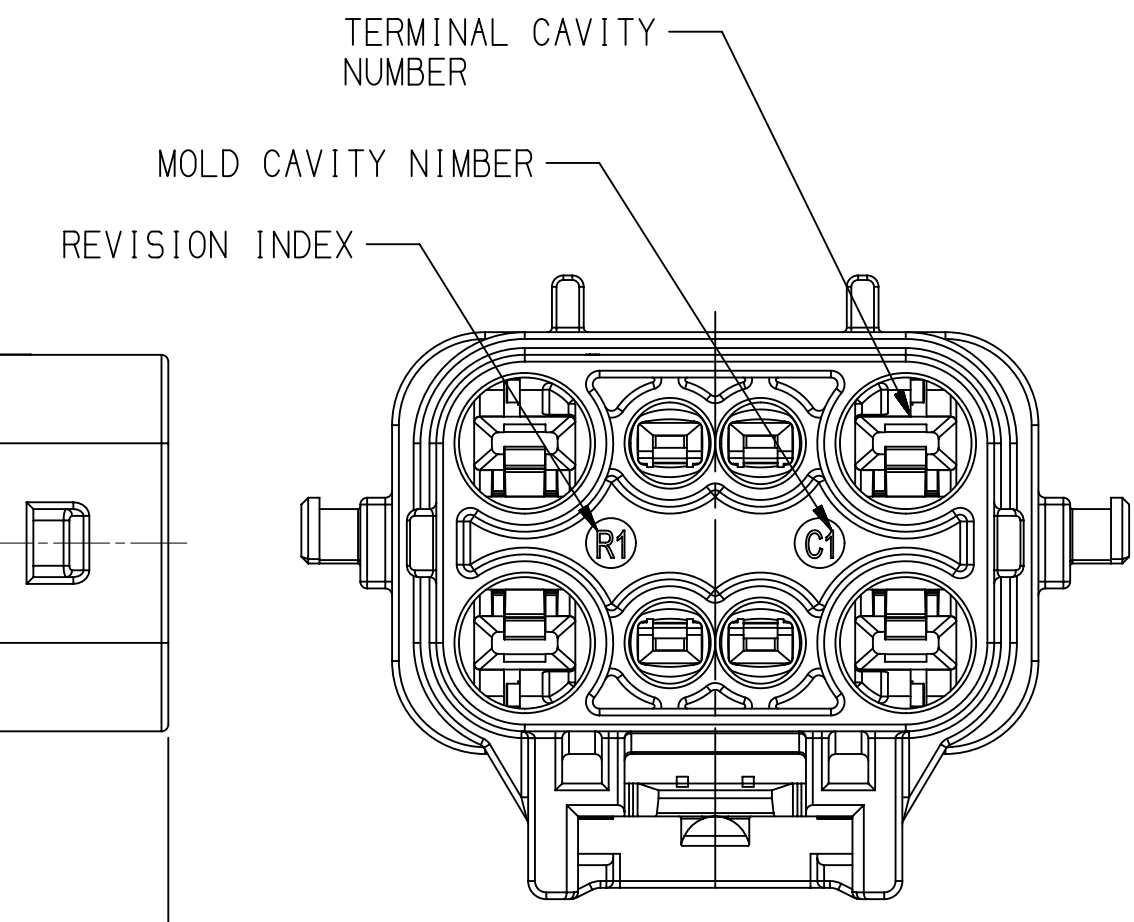
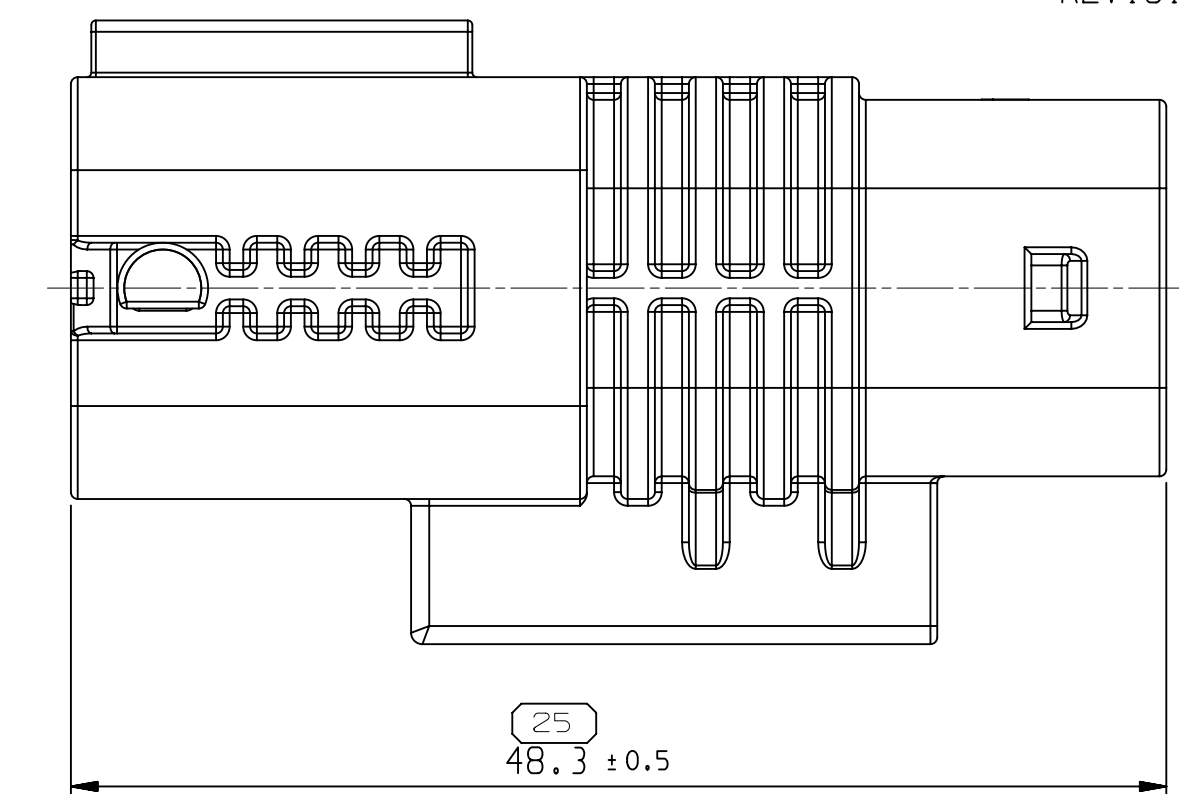
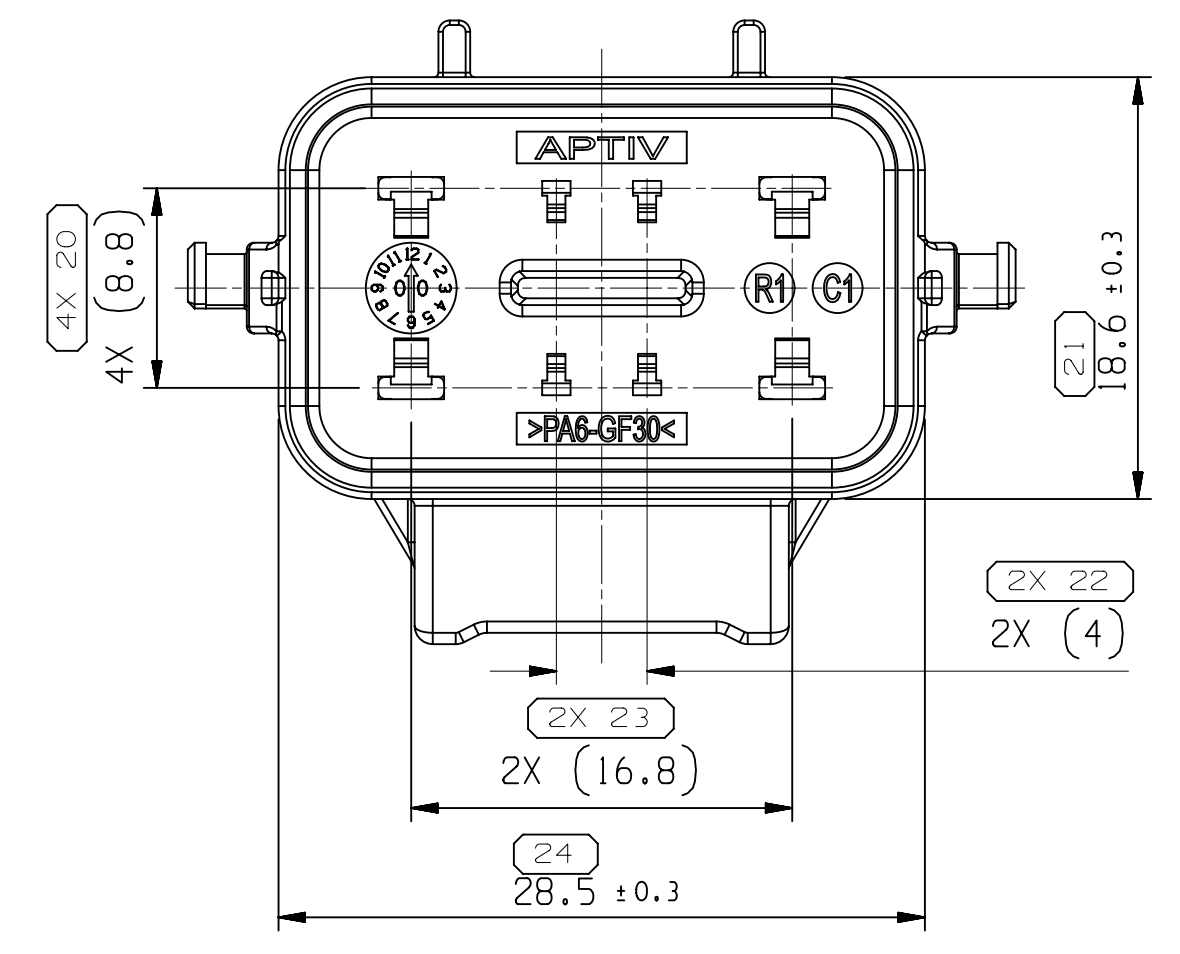
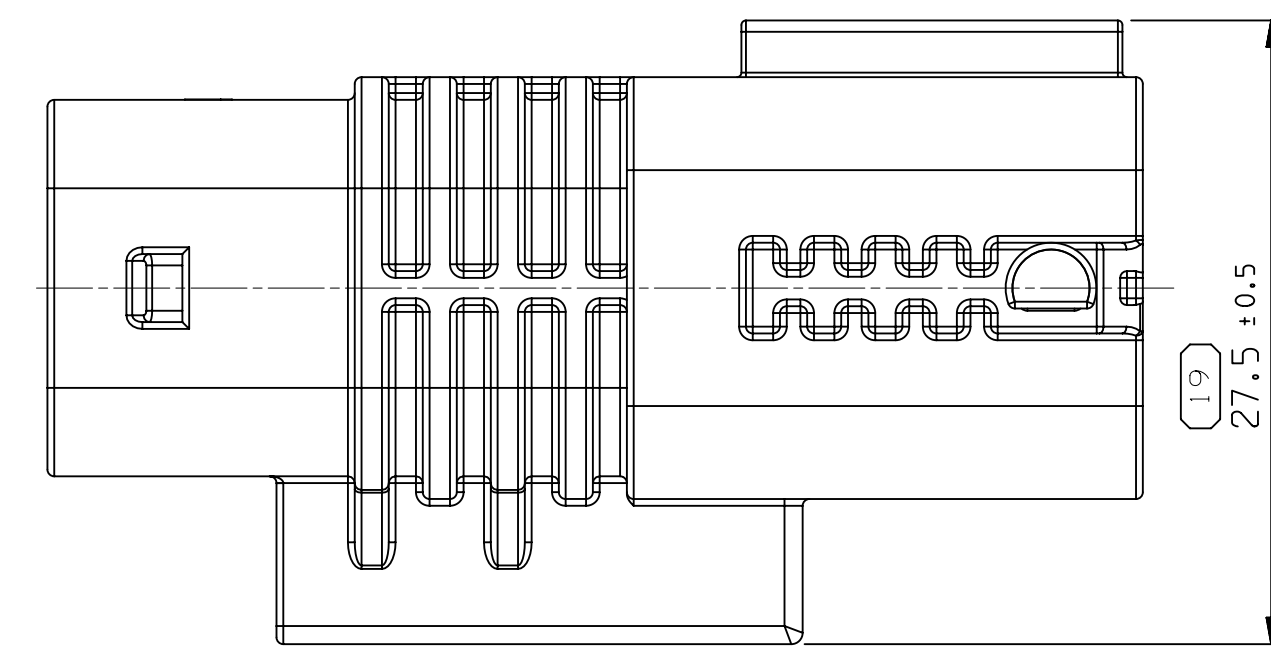
CODE C



CODE D



- NOTES:
- TOLERANCE ON DIN ISO 2768 (m)
 - MUST BE FREE OF CRACK, FLOW MARK, FLASH, BURR ETC. THAT AFFECT FUNCTION OF PRODUCT
 - MUST MEET HMC E591500-00 UNLESS OTHERWISE SPECIFIED TO VENDOR SPECIFICATION
 - APPLICABLE FEMALE CONNECTORS :



ASSOCIATED PARTS				
FEMALE TERMINAL	TIN	PART NUMBER	WIRE SIZE (mm ²)	AWG
APEX 2.8	TIN	15509074	2.5	13
	TIN	33219166	0.3-0.5	20-22
APEX 1.2	TIN	33219167	0.8-1.25	16-18
	Ag	33219168	0.3-0.5	20-18
	Ag	33219169	0.8-1.25	16-13
	Au	33219170	0.3-0.5	20-22
Au	33219171	0.8-1.25	16-18	

CABLE SEAL						
TERMINAL	TYPE	PART NUMBER	WIRE SIZE (mm ²)	INSULATION Ø	COLOR	MATERIAL
APEX 2.8	SHORT	35215173	2.5	2.9-3.0	BLACK	SILICONE RUBBER
		33318278	0.3-0.35	1.2-1.5	GRAY	
APEX 1.2	SHORT	33318279	0.5-0.85	1.6-1.9	LIGHT GRAY	SILICONE RUBBER
		33318275	1.0-1.5	1.9-2.4	BLACK	
		33402443	-	-	WHITE	
	DUMMY SEAL	35020635	-	-	DARK GRAY	

CODING	TYPE	REP.	PART NUMBER	DESCRIPTION	QTY.	MATERIAL	COLOR	REMARKS
	ASSEMBLY	-	35238862	SEALED MALE CONNECTOR CODE A	-	-	-	
A TYPE	MALE HOUSING	1	35258485	MALE HOUSING CODE A	1	PA6 GF30	BLACK	
	TPA	2	35258590	MALE TPA	1	PA6 GF30	BLUE	
B TYPE	ASSEMBLY	-	35239042	SEALED MALE CONNECTOR CODE B	-	-	-	
	MALE HOUSING	1	35258525	MALE HOUSING CODE B	1	PA6 GF30	BLACK	
C TYPE	ASSEMBLY	-	35241514	SEALED MALE CONNECTOR CODE C	-	-	-	
	MALE HOUSING	1	35258527	MALE HOUSING CODE C	1	PA6 GF30	BLACK	
D TYPE	ASSEMBLY	-	35258390	SEALED MALE CONNECTOR CODE D	-	-	-	
	MALE HOUSING	1	35258588	MALE HOUSING CODE D	1	PA6 GF30	BLACK	
	TPA	2	35258590	MALE TPA	1	PA6 GF30	BLUE	

DIN ISO 2768		Tolerance Class Medium (m)							
Linear Dimensions except for broken edges	Permissible deviations for basic size range (mm)	0.5	1 up to 3	over 3 up to 6	over 6 up to 30	over 30 up to 120	over 120 up to 400	over 400 up to 1000	over 1000 up to 2000
		±0.1	±0.1	±0.2	±0.3	±0.5	±0.8	±1.2	
Broken edges (radii, chamfers)	Permissible deviations for basic size range (mm)	0.5	1 up to 3	over 3 up to 6	over 6 up to 120	over 120 up to 400	over 400 up to 1000	over 1000 up to 2000	
		±0.2	±0.2	±0.5	±1	±1	±1	±1	
Angular dimensions	Permissible deviations for ranges of lengths, in mm, of the shorter side of the angle concerned	up to 10	over 10 up to 50	over 50 up to 120	over 120 up to 400	over 400 up to 1000	over 1000 up to 2000		
		±1°	±0° 30'	±0° 20'	±0° 10'	±0° 5'	±0° 5'		

*1 For nominal sizes below 0.5mm, the deviations shall be indicated adjacent to the relevant nominal size(s).

APTIV
CONNECTION SYSTEMS

Copyright 2019 APTIV. All rights reserved.

THIS DRAWING IS THE PROPERTY OF APTIV AND CONTAINS APTIV CONFIDENTIAL INFORMATION. THE REPRODUCTION, DISTRIBUTION AND UTILIZATION OF THIS DOCUMENT OR ITS RELATED CAD DATA, AS WELL AS COMMUNICATION OF ANY CONTENT TO OTHERS, WITHOUT EXPRESS AUTHORIZATION, IS PROHIBITED.

DATE: 15FE19
DR: CHO, WOO-JAE
APVD1: CHO, WOO-JAE
APVD2: CHOI, JUNG-WOOK
APVD3: PARK, JOO-HYUN
APVD4: [REDACTED]

DRAWING NUMBER: 35263947

SIZE: A0
SCALE: 3:1
FRAME NO: 1 OF 1
SHEET NO: 1 OF 1
DATE: 15FE19