

FISHER & PAYKEL

GAS-ON-GLASS COOKTOP

JZT-CG301DNGGB5, JZT-CG301DNNGG5, JZT-CG391DNGGB5 &
JZT-CG391DNNGG5 models

USER GUIDE

CN

CONTENTS

Safety and warnings	5
First use	9
Manual lighting	11
Burner parts	12
Burner accessories	13
Cookware guide	14
Care and cleaning	15
Leak testing	16
Troubleshooting	17
Manufacturer's Warranty and Service guide	19

⚠ WARNING!



Electrical Shock Hazard

Failure to follow this advice may result in electrical shock or death.

- Switch the power to the cooktop off at the wall before cleaning or maintenance.
- Connection to a good earth wiring system is essential and mandatory.
- Alterations to the domestic wiring system must only be made by a qualified electrician.
- Do not cook on a broken or cracked cooktop. If the glass should break or crack, turn off the gas supply and switch the appliance off immediately at the mains power supply (wall switch) and contact a qualified technician.
- Do not modify this appliance.

⚠ WARNING!



Fire Hazard

Failure to follow this advice may result in serious injury.

- Never leave the appliance unattended when in use. Boilover causes smoking and greasy spillovers that may ignite.
- Do not place articles on or against this appliance.

⚠ WARNING!



Poisoning Hazard

Failure to follow this advice may result in poisoning or death.

- Never use this appliance as a space heater to heat or warm the room. Doing so may result in carbon monoxide poisoning and overheating of the appliance.

⚠ WARNING!



Explosion Hazard

Failure to follow this advice may result in death or serious injury.

- Do not use or store flammable materials such as gasoline near this appliance.
- Do not spray aerosols in the vicinity of this appliance while it is in operation.

⚠ WARNING!



Hot Surface Hazard

Failure to follow this advice may result in serious injury.

- This appliance becomes hot during use. Do not touch the cooktop components, burners, pan supports or the glass when hot.
- Before cleaning, turn the burners off and make sure the whole cooktop is cool.

READ AND SAVE THIS GUIDE

WARNING!

To reduce the risk of fire, injury to persons or damage when using the appliance, follow the important safety instructions listed below. Read all the guidance before installing or using the appliance.

Installation

- This is a Type A gas appliance.
- Save these instructions for the local electrical inspector's use.
- Installation must comply with your local building and local electricity regulations.
- This appliance is to be installed and serviced only by Fisher & Paykel trained and supported service technician or qualified person.
- The manufacturer accepts no responsibility for the incorrect installation of appliances. Incorrect installation may result in personal injury, damage to property and may invalidate any warranty or liability claims.
- This appliance shall be installed in accordance with the regulations in force and only used in a well-ventilated space.
- Do not install this appliance next to a downdraft ventilation unit.
- Packing elements (eg plastic bags, polystyrene foam, staples, packing straps etc) and tools should not be left around during and after installation, especially if they are within easy reach of children, as these may cause serious injuries.
- Make sure you recycle the packaging material.
- Before disposing of any appliance, make sure that it can no longer be used and that all hazardous parts are removed or made harmless, so that children playing with the old appliance cannot harm themselves.
- Servicing shall be carried out only by authorized personnel.
- Only genuine replacement parts may be used for servicing the appliance. These are available from your nearest Fisher & Paykel Service Centre.
- The adjustment conditions for this appliance are stated on the data plate. Prior to installation, ensure that the local distribution conditions (nature of the gas and gas pressure) and the adjustment of the appliance are compatible. If in doubt, refer to the local gas network operator or gas supplier to confirm gas type at installation site.
- Do not use or store flammable materials on or near this appliance.
- Do not spray aerosols in the vicinity of this appliance while it is in operation.
- You must remove the transit screws before installing the cooktop.
- Particular attention shall be given to the relevant requirements regarding ventilation.
- These appliances are tested by China Quality Supervising and Test for Gas Appliances (CGAC).

General Use

- **CAUTION:** This appliance is for cooking purposes only. It shall not be used for other purposes, for example, room heating.
- Keep children away from the cooktop when it is in use.
- Household appliances are not intended to be played with by children.
- Children of less than 8 years old must be kept away from the appliance unless continuously supervised. This appliance can be used by children aged from 8 years and above, and persons with reduced physical, sensory or mental capabilities or lack of experience and knowledge, if they have been given supervision or instruction concerning the use of the appliance in a safe way and they understand the hazards involved. Cleaning and user maintenance shall not be done by children without supervision.

SAFETY AND WARNINGS

- If the electrical supply cord is damaged, it must only be replaced by an authorised person.
- If the appliance is connected to the gas supply with a flexible hose, make sure that the hose cannot come in contact with the bottom of the appliance or any sharp edges.
- Ensure that the electrical connection plug is accessible after installation.
- This appliance should be connected to a circuit that incorporates an isolating switch providing full disconnection from the electricity supply.
- Do not use an asbestos mat or decorative covers between the flame and the saucepan as this may cause serious damage to your cooktop.
- Do not place aluminium foil or plastic dishes on the cooktop burners.
- Do not let large saucepans, frying pans or woks push any other pans aside. This could make them unstable or deflect heat onto your benchtop and damage the surface.
- Do not use a steam cleaner for cleaning this cooktop.
- Saucepan handles may be hot to touch. Ensure saucepan handles do not overhang other gas burners that are on. Keep handles out of reach of children.
- Do not stand or place heavy objects on this appliance.
- After use, ensure that the burner dials are in the 'OFF' (o) position.
- Where this appliance is installed in marine craft or in caravans, it shall not be used as a space heater.
- CAUTION: In case the glass surface breaks:
 - Immediately shut off all burners and any electrical heating element, and disconnect the appliance from the power supply.
 - Do not touch the appliance surface.
 - Do not use the appliance.
- Take care not to drop any heavy or sharp objects on the cooktop. The glass is tough, but sharp or heavy objects falling on it (e.g. pepper mill, heavy-based frying pan) may crack or chip it.
- CAUTION: The use of a gas cooking appliance results in the production of heat and moisture in the room in which it is installed. Ensure the kitchen is well ventilated. Keep natural ventilation holes open or install a mechanical ventilation device (mechanical extractor hood). Prolonged intensive use of the appliance may call for additional ventilation, for example opening of a window, or more effective ventilation, for example increasing the level of mechanical ventilation where present. Consult a professional before installation of the additional ventilation.
- After having unpacked the appliance, check to ensure that it is not damaged. In case of doubt, do not use it and consult your supplier or a professionally qualified technician.
- Packing elements (eg plastic bags, polystyrene foam, nails, packing straps, etc.) should not be left around within easy reach of children, as these may cause serious injuries.
- Do not modify this appliance.
- This appliance is to be serviced only by Fisher & Paykel trained and supported service technician or qualified electrician in order to avoid a hazard.
- Some products are supplied with protective film on steel and aluminium parts. This film must be removed before using the appliance.
- Never leave the cooktop unattended when in use. Boil-over causes smoking and greasy spills that may ignite.
- Never allow flames to extend beyond cookware or curl up its sides. This could discolor and damage the utensil and you may get burned touching a hot handle.
- Keep handles out of the way. Turn handles so that they don't extend over the edge of the cooktop or another burner that is on.
- Take care when deep-frying. Oil or fat can overheat quickly, particularly on high.

FIRST USE

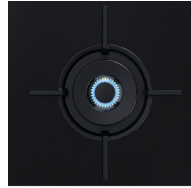


Cooktop features and accessories

- ① Burner
- ② Trivet
- ③ Control dial
- ④ Small pan support
- ⑤ Wok stand
- ⑥ Serial label (on cooktop base)

FIRST USE

When using the burner, you can choose to use the inner burner only or both the inner and outer burners as desired.



Inner burner only



Inner and outer burner

Lighting the burner

Push the dial down and turn counterclockwise to the highest heat setting. Once the burner is lit, hold the dial down for a further 3 seconds.

Note: Refer to 'Manually lighting the cooktop' if your burner will not light.

Setting both the inner and outer rings

Turn the dial to any heat setting between **MEDIUM** and **HIGH** before releasing.

If the flame on the outer ring appears to flutter, turn the dial slightly towards high to stabilise.

Setting the inner ring

Turn the dial to any heat setting between **MEDIUM** and **LOW** before releasing.

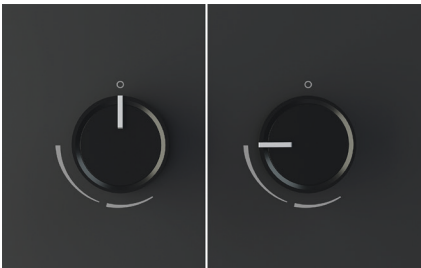
When you have finished cooking, turn the dial clockwise back to **O (OFF)**.

MANUAL LIGHTING

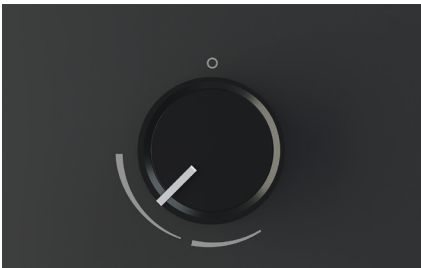
If the burner will not light after several attempts, the burner can be manually lit. If you have attempted to light the burner with the ignition, allow 5 minutes for any accumulated gas to dissipate before manually lighting. Lighting your cooktop this way can be achieved if your power is off.



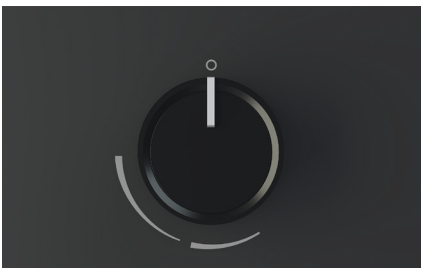
1. Carefully hold a lit match near the burner.



2. Push the dial down and turn counterclockwise to the highest heat setting. Once the burner is lit continue to hold the dial down for a further 3 seconds.



3. Wait until the flame is burning evenly before adjusting the heat setting as required.



4. When you have finished cooking, turn the dial clockwise back to **O (OFF)**.

BURNER PARTS



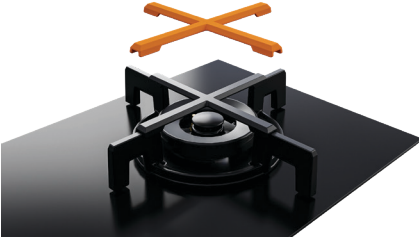
Ensure all parts are correctly fitted before using the burner.

Flames should burn blue, without yellow tips or fluttering around the burner cap.



Ensure the trivet is securely positioned and level. If necessary, adjust the height of its feet.

BURNER ACCESSORIES

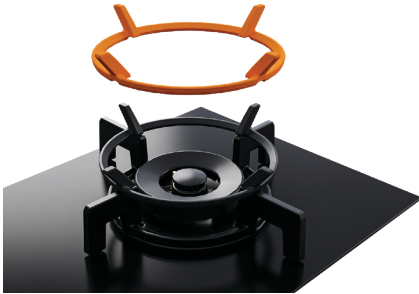


Small pan support

Use the small pan support for cookware with a base diameter smaller than 200mm.

Using the small pan support

Ensure the cooktop is cool before positioning the small pan support on the centre of the trivet. Ensure the support is securely positioned and level before using.



Wok stand

The wok stand is designed to allow the safe use of a wok. This accessory must be used when cooking with a wok.

Using the wok stand

Ensure the cooktop is cool before slotting the wok stand onto the centre of the burner. Ensure all notches rest securely on the burner pan supports before use.

COOKWARE GUIDE

For optimal performance, ensure the size of the cookware is suitable for the burner in use.

BURNER		MIN. DIAMETER	MAX. DIAMETER
		MM	MM
Dual wok	Pan without small pan support	200	340
	Wok with wok stand	240	400

Note: measurements provided from base of pan

CARE AND CLEANING

When cleaning your cooktop, switch the power off at the wall.

We do not recommend using the following cleaning products as they may cause damage:

- Plastic or stainless steel scouring pads
- Abrasive or solvent cleaners
- Acid or alkaline cleaners
- Stainless steel cleaners or polishes
- Laundry detergents or disinfectants

Everyday cleaning such as fingerprints, marks, metal sheen and non-sugary spills

Apply cooktop cleaner, then wipe with a damp cloth. Dry with a clean, lint-free cloth or paper towel. If further cleaning is required, apply cooktop cleaner following the manufacturer's instructions.

Boilovers, melts and hot sugary spills

Remove these immediately with a glass scraper, but beware of hot surfaces.

- ① Turn off the cooktop.
- ② Hold the scraper at a 30° angle, and move the spill to a cool area of the cooktop.
- ③ Wipe clean with a damp cloth or paper towel.

Cleaning the burner caps, rings, flame spreaders and accessories

When cleaning these parts, ensure they are completely dry before refitting as wet burner parts may result in an irregular, dangerous flame.

- ① Remove the parts that you wish to clean.
- ② Clean in hot soapy water with a stiff nylon brush.
- ③ Rinse in warm water and dry thoroughly.
- ④ Ensure all parts are replaced correctly.

Cleaning the ignitor and probe

Burners should be cleaned regularly. Food residue may obstruct the ignitor and the notches of the flame spreader, preventing the burner from functioning correctly.

- ① Remove the parts required to access the ignitor and probe.
- ② Clean carefully with a stiff nylon brush dipped in methylated spirits ensuring any build up is removed.
- ③ Ensure all parts are replaced correctly.

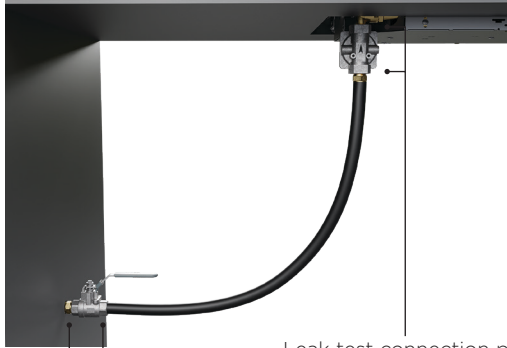
LEAK TESTING

Follow the below instructions to carry out leak testing:

- Ensure all dials are set to **OFF** before connecting cooktop to gas supply.
- After final gas connection is made, turn gas supply on and test all connections in gas supply piping for gas leaks with a soapy water solution.
- In order to avoid property damage or serious personal injury, never use a match or open flame. If a leak is present, tighten joint or unscrew, apply more joint compound, tighten again and retest connection for leak.



Manual shut-off valve



Leak test connection points

TROUBLESHOOTING

Why won't my cooktop turn on?

There may be no power. Make sure the cooktop is connected to the power supply and switched on at the wall. Check the circuit breaker, or check if there is a power cut in your home or area. If your cooktop still won't turn on, call Customer Care or your Authorized Service Center.

There is a strong gas smell

The gas connection could be leaking. Open a window and check for leaks. Refer to 'Leak testing' for details. Do not use the cooktop until the leak has been repaired.

There is a slight rubbery or metallic smell when I use the cooktop for the first time

This is normal for first use and is caused by manufacturing residues burning off. The smell will disappear with use.

There is no clicking/ sparking when trying to ignite the cooktop

- There may be a power failure. You can still use your cooktop in a power failure, but you will need to match-light the burners. Refer to 'Manual lighting' for details.
 - The ignitor may be dirty or wet. Clean the ignitor following the guidance in 'Care and cleaning'.
-

There is clicking/sparking, but the burner won't light easily or at all

- The gas supply may not be turned on at the valve or gas bottle. Turn all the burners off, and check whether the gas supply to the cooktop is turned on. Wait 1 minute, then try relighting the burner, holding the dial down for a few more seconds.
 - The gas supply to the house may not be working. You should hear the gas when you turn a burner on. If you use bottled gas, not hearing the gas may indicate you are getting near the end of the bottle and need to replace it.
 - Burner parts may be clogged or wet. Ensure parts are clean and dry. See 'Care and cleaning' for guidance.
 - Burner parts may not have been replaced correctly. Check the assembly and ensure the burner cap is sitting flat.
-

The burner goes out after lighting

The dial may not have been held down for long enough. Wait for 1 minute, then try to relight the burner, holding the dial down for a few more seconds.

TROUBLESHOOTING

The flame has been extinguished

- The flame may have been blown out by draught. In this case, the flame failure protection will automatically cut the gas supply to the burner off, stopping gas from escaping.
 - The flame may have been extinguished by a spill. Turn the burner off, then wait for at least 5 minutes before attempting to relight. This is to allow for any accumulated gas to disperse.
-

The flame goes out at low settings

The gas supply pressure may be low. Check this with your service person or installer.

What should I do if the glass gets cracked or chipped?

Stop using the cooktop. Turn off the power supply at the wall, and call Customer Care or your Authorized Service Center.

MANUFACTURER'S WARRANTY AND SERVICE GUIDE



To access your Warranty and Service Guide

Scan the QR code with your smartphone to access your warranty and book a service, or view online at <https://www.fisherpaykel.com/cn/help-and-support/warranty-information>

This product has been designed for use in a domestic (residential) environment. This product is not designed for any commercial use. Any commercial use by the customer will affect this products Manufacturer's Warranty.

Complete and keep for safe reference:

Model	_____
Serial No.	_____
Purchase Date	_____
Purchaser	_____
Dealer	_____
Suburb	_____
Town	_____
Country	_____

FISHERPAYKEL.COM

© Fisher & Paykel Appliances 2025. All rights reserved.

The models shown in this guide may not be available in all markets
and are subject to change at any time.

The product specifications in this guide apply to the specific products and
models described at the date of issue. Under our policy of continuous product
improvement, these specifications may change at any time.

For current details about model and specification availability in your country,
please go to our website or contact your local Fisher & Paykel dealer.

432634A 02.25