

FISHER & PAYKEL

**INTEGRATED
REFRIGERATOR FREEZER**

RB6018BRV

INSTALLATION GUIDE

CN

COMPONENTS REQUIRED

TOOLS

- | | |
|---|---|
| <input type="checkbox"/> Powered Driver | <input type="checkbox"/> Phillips Screwdriver |
| <input type="checkbox"/> Level | <input type="checkbox"/> Flathead screwdriver |
| <input type="checkbox"/> Square | <input type="checkbox"/> Box cutter |
| <input type="checkbox"/> Tape measure | <input type="checkbox"/> Spanner |
| <input type="checkbox"/> Scissors | |

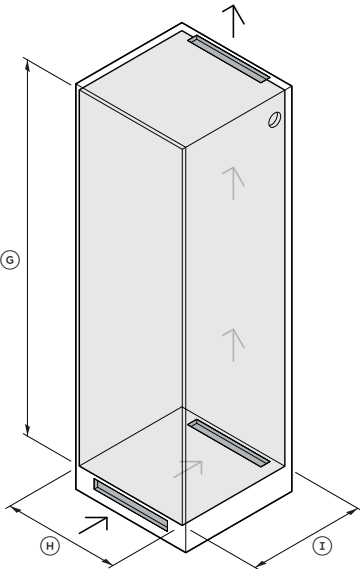
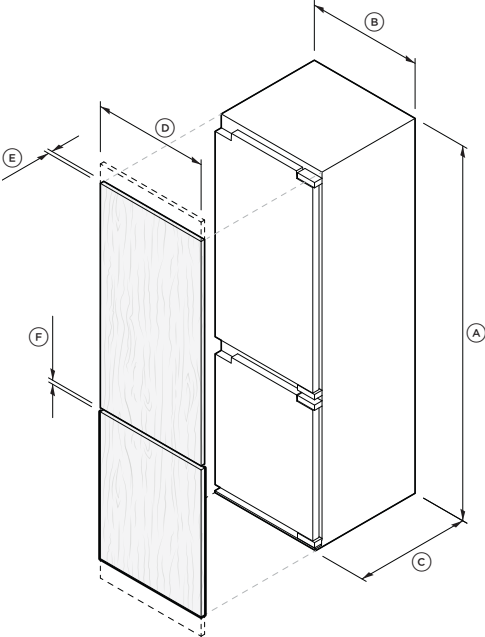
PARTS

- | | |
|---|---|
| <input type="checkbox"/> Hinge Screws (12) | <input type="checkbox"/> Door panel brackets (6) |
| <input type="checkbox"/> Door Panel Bracket Screws (12) | <input type="checkbox"/> Hinge spacers (4) |
| <input type="checkbox"/> Screw head covers (2) | <input type="checkbox"/> Rear flow divider (1) |
| <input type="checkbox"/> Top hinge trims (2) | <input type="checkbox"/> Alcove seals (2) |
| <input type="checkbox"/> Middle hinge trim (1) | <input type="checkbox"/> Hinge trims (3) |
| <input type="checkbox"/> Upper depth gauge (1) | <input type="checkbox"/> Hanging bracket alignment guides (4) |
| <input type="checkbox"/> Lower trim (1) | <input type="checkbox"/> Side gauges (4) |
| <input type="checkbox"/> Lower trim cover (1) | <input type="checkbox"/> Refrigerator top door cover (1) |
| <input type="checkbox"/> Non-hinge side middle spacer and depth gauge (1) | <input type="checkbox"/> Freezer top door cover (1) |

ACCESSING YOUR PRODUCT SPECIFICATIONS



For full product, cabinetry and service specifications, refer to the Planning Guide. To access the Planning Guide, scan the QR code or visit fisherpaykel.com/specify. Search by appliance type, product name or model code.



	mm
(A)	1772
(B)	550
(C)	550
(D)	592
(E)	16-19
(F)	4
(G)	1778-1782
(H)	560-568
(I)	560-580

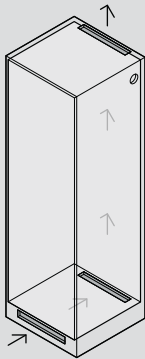
Minimum inlet and outlet ventilation gap: 200cm²

PRIOR TO INSTALLATION



1. Ensure cabinetry and panel specifications have been met and clearances have been considered.

Refer to the Planning Guide for details.



2. Ensure the alcove is square, has a finished return, and includes a ventilation cutout through the plinth and out of the cavity. Avoid venting directly into the adjacent cabinetry.

Refer to the planning guide for full ventilation requirements.



3. Ensure service access has been considered. If needed, create a cutout in the alcove to route the power cord.

UNPACKING



1. Cut the straps, open the top and cut down the side of the carton to remove.

Remove all pre-packaged parts and set aside.

Check power to the product.

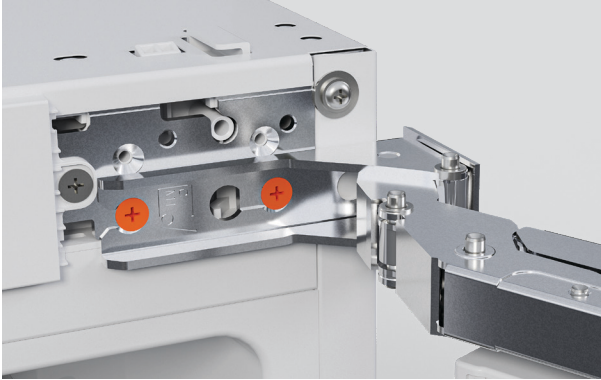


2. Loosen the screws and slide the transit brackets off each door. Discard the brackets.

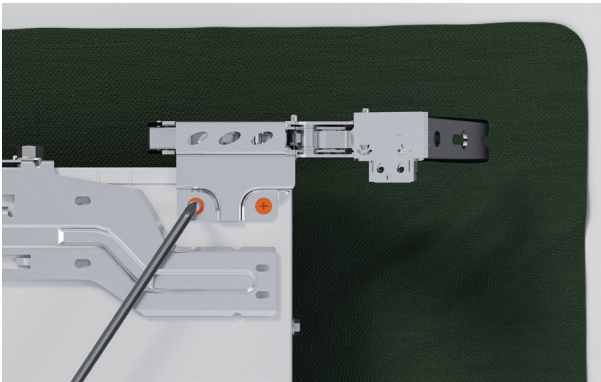


3. Dispose of packaging responsibly.

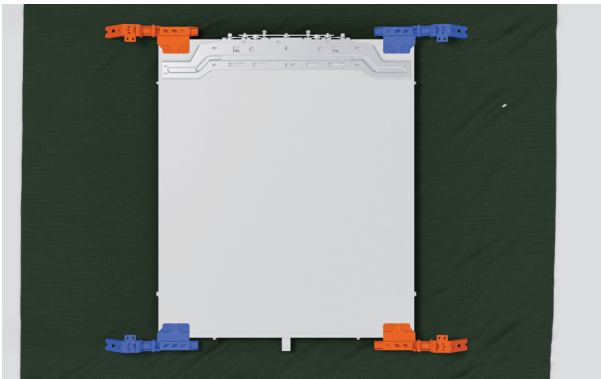
HINGE SWAP (OPTIONAL)



1. Open the door.
Loosen the upper and lower hinge screws. Slide door off and place on a protected surface.



2. Carefully remove hinges from door and set aside.

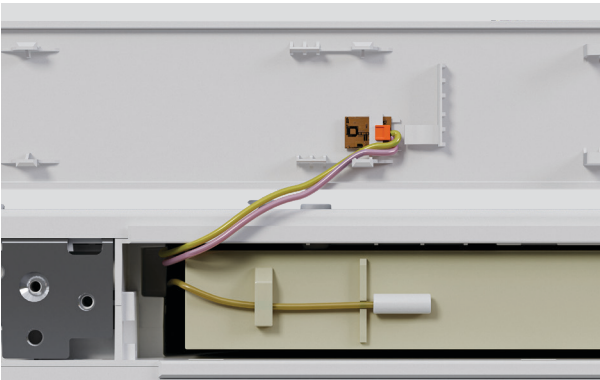


3. Swap hinges as illustrated.
Ensure base of hinges are parallel and tightened securely.

HINGE SWAP (OPTIONAL)



4. Remove the screw and lift the cover from the right-hand side. Unclip to remove.

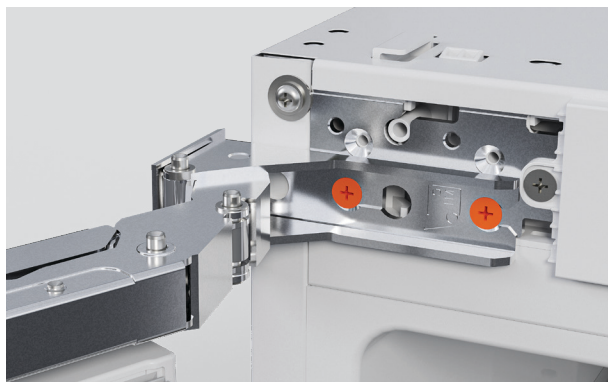


5. Remove the sensor, taking care not to damage.



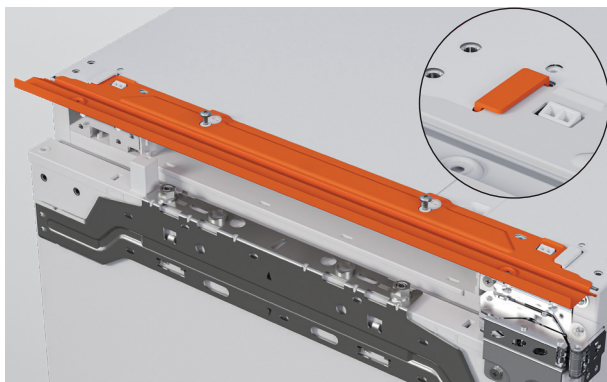
6. Swap the sensor to the other side, ensuring it is clips in place. Hook the cover into the tab and fit the screw to secure.

HINGE SWAP (OPTIONAL)

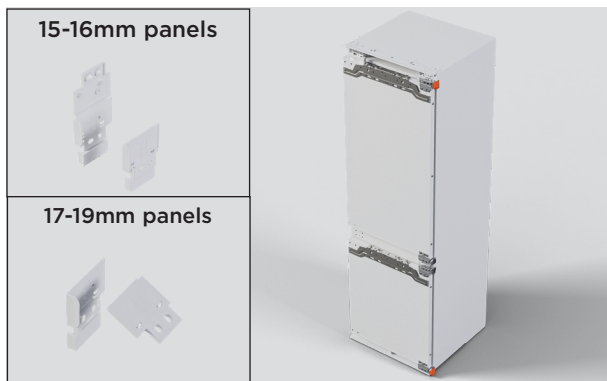


7. Slot the door back onto the screws and tighten.

INSTALL DEPTH GAUGES AND SPACERS



1. Loosen the screws and slide the upper depth gauge into place. Ensure the bracket slides under the tabs on both sides.

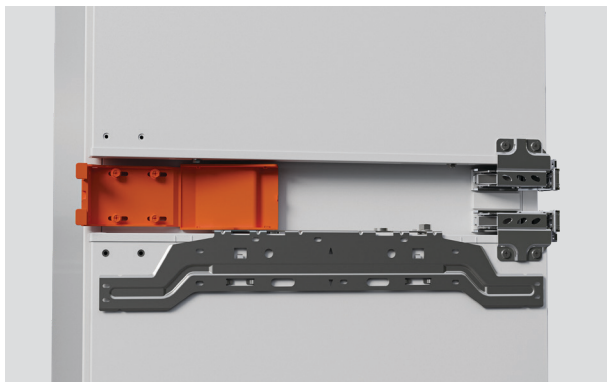


2. Prepare hinge spacers based on thickness of cabinetry panels.

15-16mm panels: fold spacers

17-19mm panels: snap spacers

There are two hinge spacer/depth gauges for the upper hinges and two for the lower hinges. Clip each into place, ensuring correct positioning.



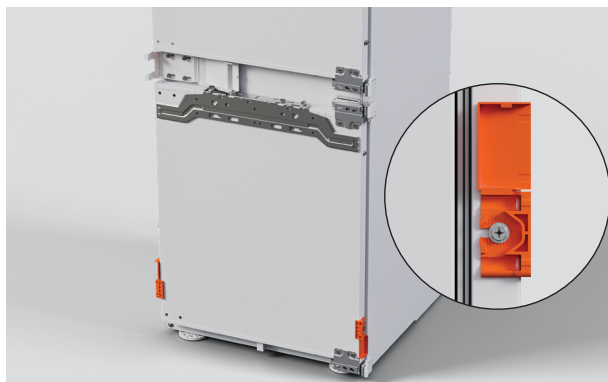
3. Attach the middle hinge spacer on non-hinge side of the product.

Adjust bracket location ensuring it sits flush to cabinet.

INSTALL DOOR PANEL BRACKETS



1. Loosen the screws and slide the four door panel brackets onto the refrigerator door. Tighten to secure. Close the covers.



2. Install two door panel brackets onto the freezer door. Close the covers.

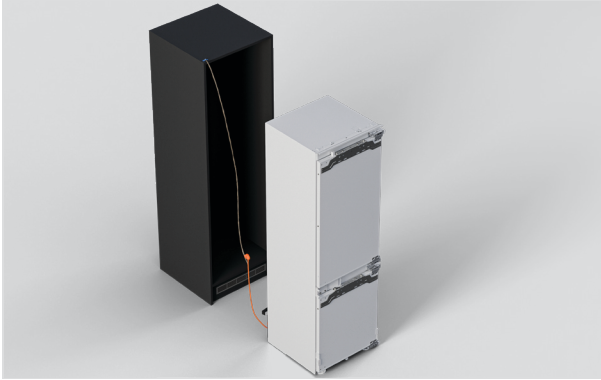
SECURE FLOW DIVIDER



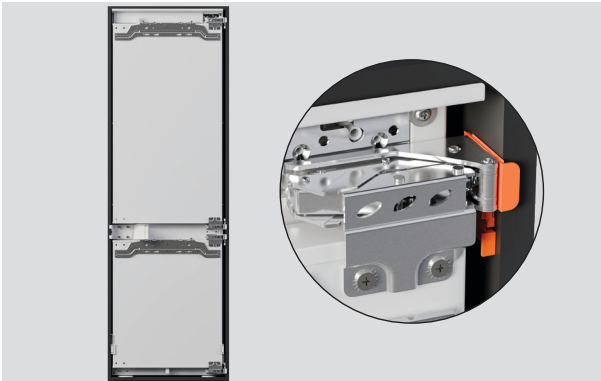
1. Fit rear flow divider using the pre-fitted adhesive.



2. Ensure the feet are retracted completely.

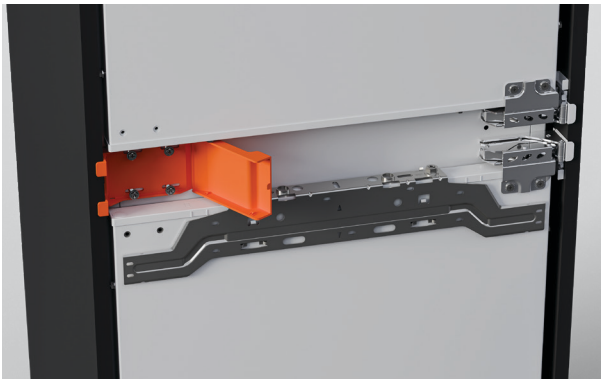


1. Push the product into the cabinet, ensuring the power cable is pulled through and not trapped.



2. Align the hinge side brackets so the spacers sit against the cabinet walls and the depth gauges are flush with the cabinet front.

The lower gauges should stay flush while the upper gauges will sit forward.

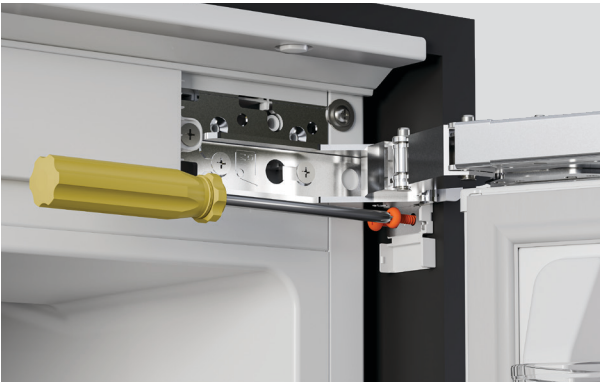


3. Ensure the middle depth gauge on the non-hinge side is in contact with the alcove wall.

SECURE



6. Adjust feet using flat head screw driver until all depth gauges sit flush with the cabinet.



5. Secure to cabinet through all four hinge spacers.
Close the hinge spacer covers.



4. Secure through the middle depth gauge.
Snap to remove all depth gauge tabs and close the middle hinge cover.

CONNECT POWER



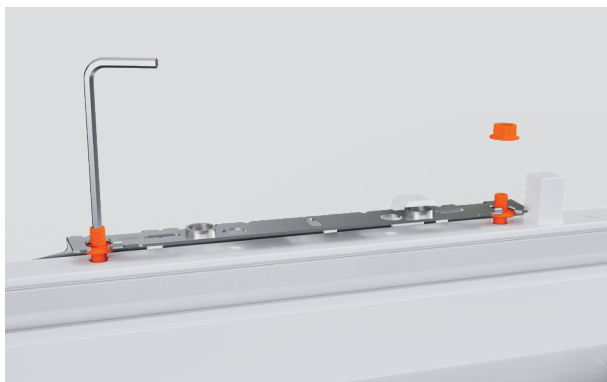
1. Connect to outlet and turn power on.

DOOR PANEL PREP



1. Recheck the door panel specifications.

Refer to the Planning Guide for details.



2. Remove the nuts, then raise the door panel hanging brackets by 5 mm using a 4mm Allen key.

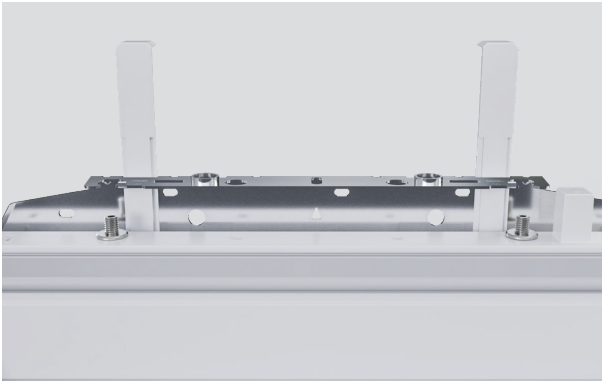


3. Pull the height gauge up to remove it, flip it front to back, and reinsert it into the adjacent slot. Adjust the gauge until it clicks into the correct position.

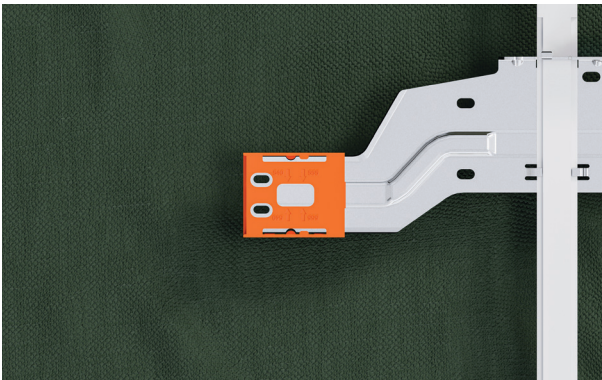
DOOR PANEL PREP



4. Raise the height gauge to the top of the cabinet. Align it with the base of the panel above if fitted, or with the base of the door panel if there is no panel above.

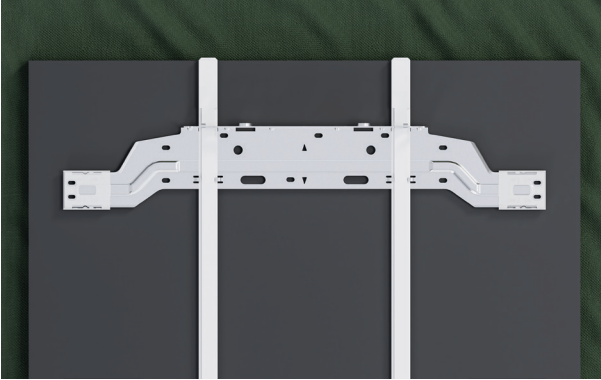


5. Remove the hanging bracket from the door.

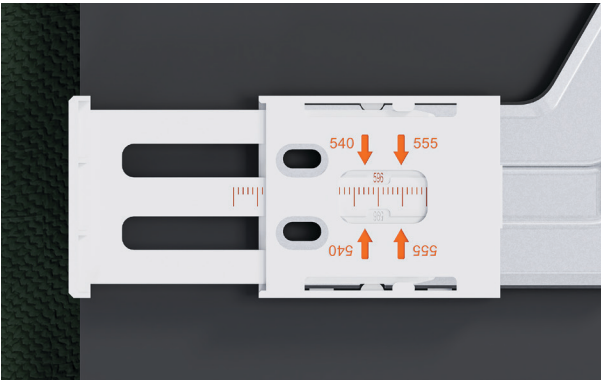


6. Clip the plastic alignment guides onto each end of the bracket.

DOOR PANEL PREP

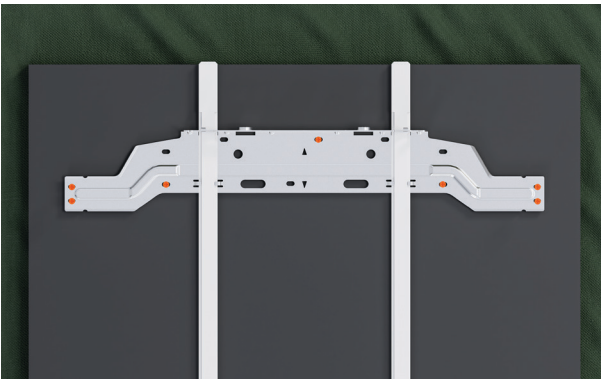


7. Place the bracket on the back of the panel with the height gauges hooked over the top edge.



8. Slide the side gauges into the alignment guides until they slide into place.

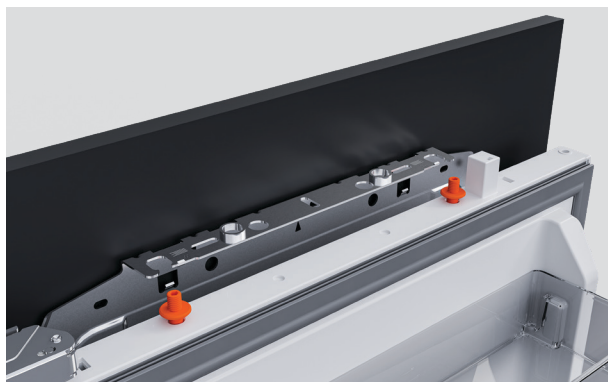
Center the bracket on the panel using the markings provided.



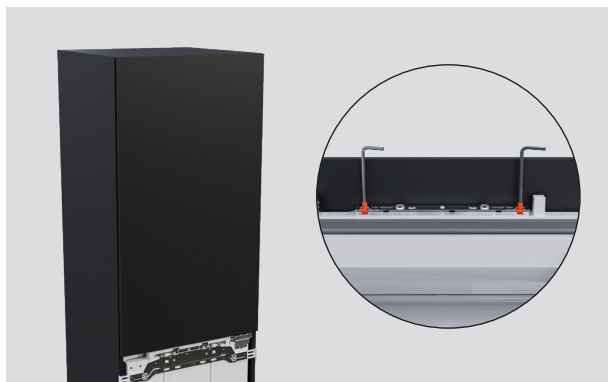
9. Secure the bracket to the panel using the four small screws from the side gauges and three screws from the install kit. Drill pilot holes before fixing the screws.

Remove the gauges, leaving the alignment guides in place. Keep gauges to use later when fitting the panel.

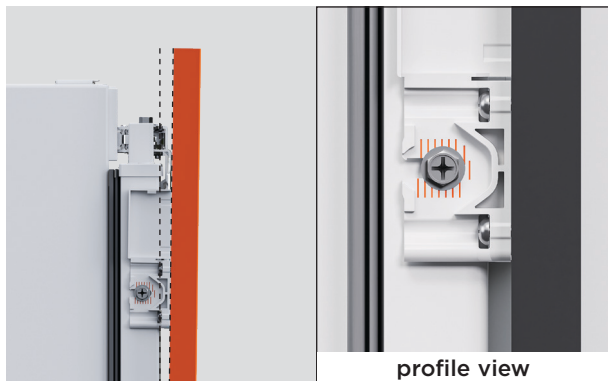
SECURE DOOR PANEL



1. Lower the panel onto the door.



2. Adjust panel height using the hanging bracket screws.



3. Adjust panel tilt using the side door brackets.

SECURE DOOR PANEL



4. Screw the panel brackets to the door. Adjust in or out to set spacing, taking care not to overtighten.

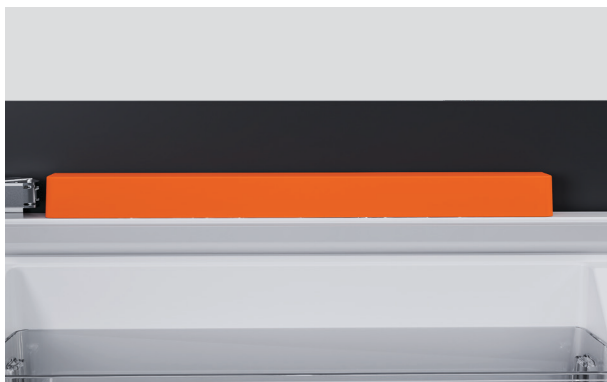


5. Recheck panels are flush and gaps are even.



6. Repeat for lower door.

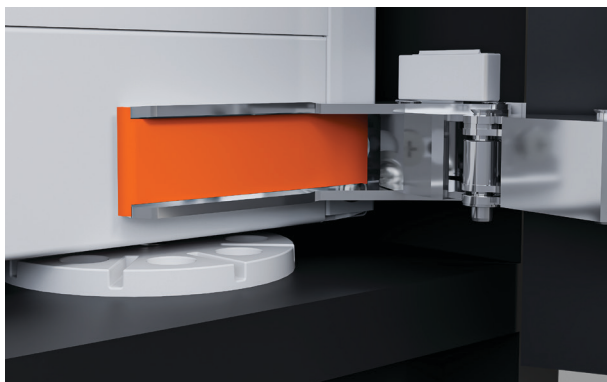
FIT TRIMS



1. Fit the top door covers. Use the taller cover for the fridge and the shorter cover for the freezer.



2. Slide the top hinge cover on and clip it into place.

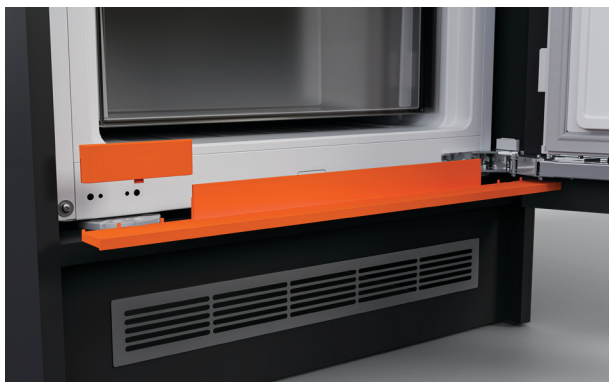


3. Slide the lower hinge cover on and clip it into place.

FIT TRIMS



4. Fit middle hinge covers. Press firmly to secure.



5. Fit the two lower trims. Press firmly to secure.



6. Fit the alcove seals. Cut each seal to size with a flat cut, starting at the top and trimming slightly longer. Fit each seal individually.

INSTALLER CHECKLIST

- ☐ Product is secure.
- ☐ Gaps are even.
- ☐ Trims are in place.
- ☐ Seals are in place.
- ☐ Ventilation has been maintained.

Complete and keep for safe reference:

Model	_____
Serial no.	_____
Purchase date	_____
Purchaser	_____
Dealer address	_____
Installer's name	_____
Installer's signature	_____
Installation company	_____
Installation date	_____

FISHERPAYKEL.COM

© Fisher & Paykel Appliances 2025. All rights reserved.

The models shown in this guide may not be available in all markets
and are subject to change at any time.

The product specifications in this guide apply to the specific products and
models described at the date of issue. Under our policy of continuous product
improvement, these specifications may change at any time.

For current details about model and specification availability in your country,
please go to our website or contact your local Fisher & Paykel dealer.

433126A 08.25