

Installation Instructions: LEXDBLADE

Note: Lexmark® T650 cartridge used for demonstration



Figure 1

Step 1: Install the long foam that is provided with the LEXDBLADE kit into a cleaned OEM 1-cycle cartridge as shown in Figure 1. Install the foam so that it is in the center of the cartridge. It is acceptable to have a small gap on both sides of the foam. The foam can be installed on top of the existing dr. bar sealing blade or the blade can be removed and then the foam can be installed.

NOTE: After installation of the long foam, apply Static Control's CSEALANT on the J-Seals to prevent leaking.



Figure 2

Step 2: Place the blade face down as shown in Figure 2.



Figure 3

Step 3: Place the small foams that are provided in the LEXDBLADE kit on the ends of the blade as shown in Figure 3.

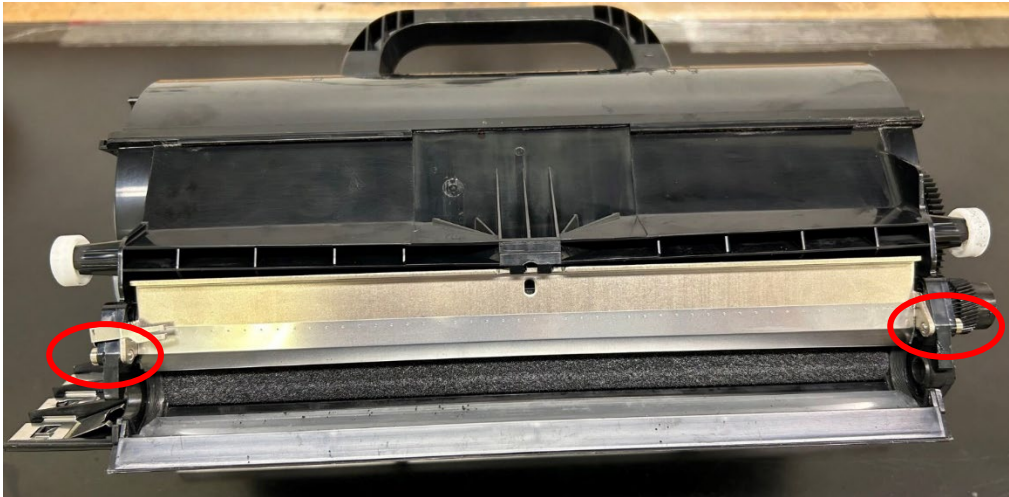


Figure 4

Step 4: Install LEXDBLADE into cartridge as shown in Figure 4. Insert provided pins into each end of the LEXDBLADE as circled. NOTE: The OEM doctor bar pins and the OEM spring are not needed and can be discarded.

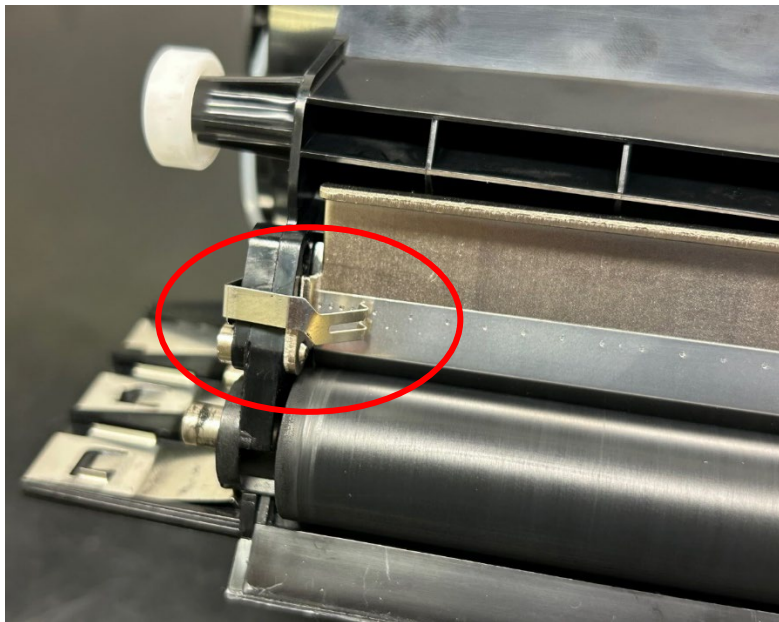


Figure 5

Step 5: Confirm that the doctor blade contact is touching the LEXDBLADE. This may require bending the contact.



Figure 6

Step 6: Install the DVR and complete remanufacturing as normal.