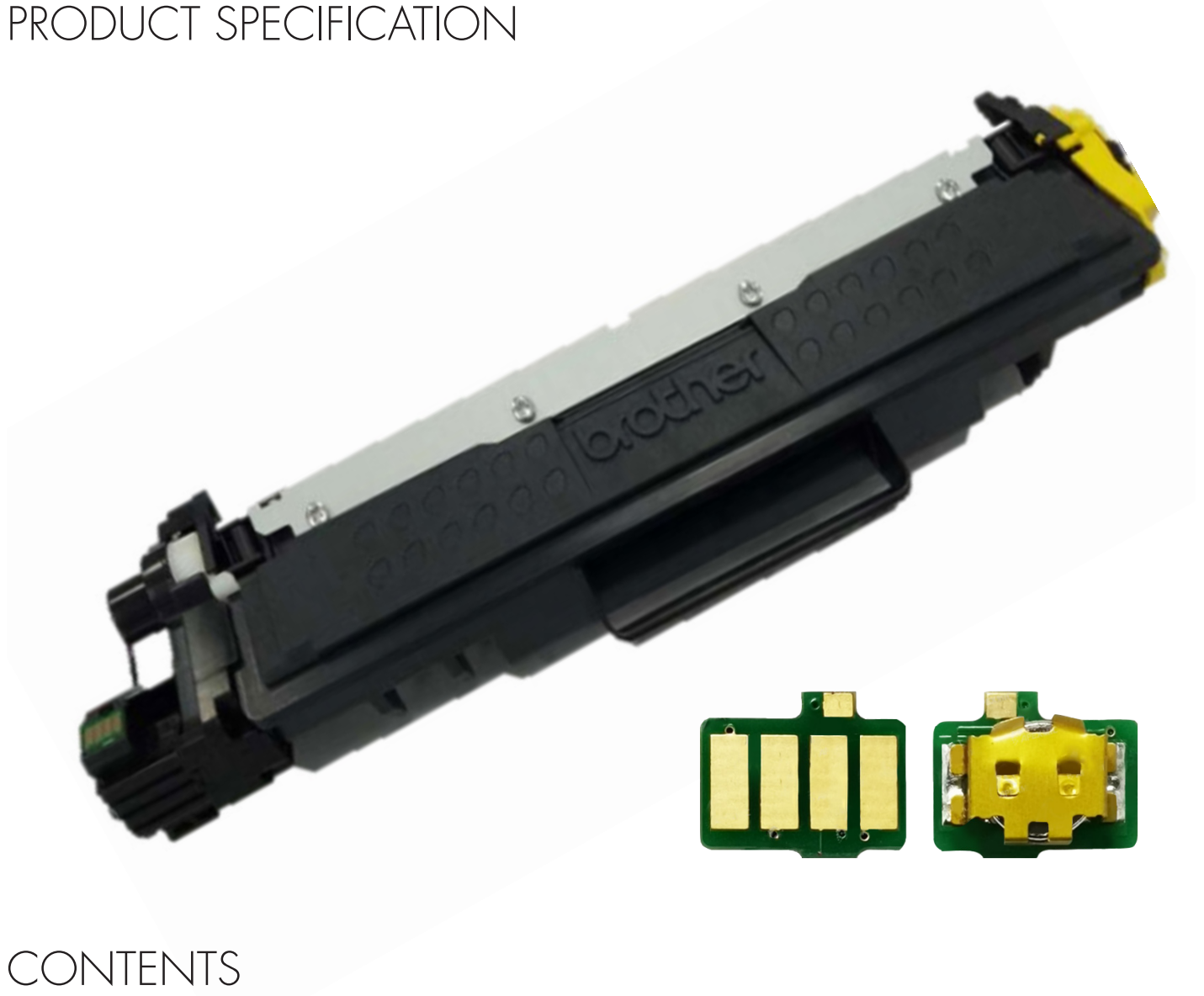




## Replacement Chips for Brother Laser II Series

### PRODUCT SPECIFICATION



### CONTENTS

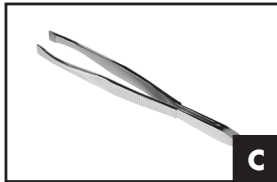
Tools & Supplies	2
Product Appearance & Size	3
Installation Guide	4
About Static Control	5



**A** Torque-controlled drill



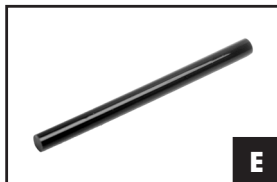
**B** Heat gun



**C** Tweezers



**D** Hot Glue Gun (GLUEGUN)



**E** Hot Glue Stick (GLUESTICK)



**F** Safety Glasses

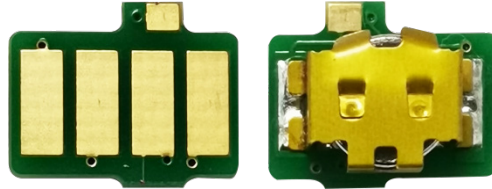


**G** Rubber Gloves



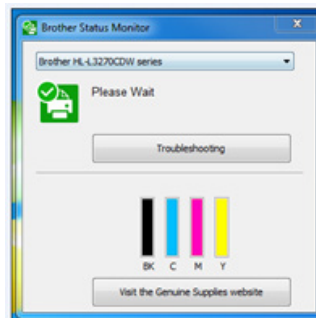
## Appearance

---



## Comparison of installation prompts between OEM chip and non-OEM chip.

---



Installation Display with an OEM Chip



Installation Display with a Static Control Chip

Conclusion: “?” is a symbol that appears on the printer after replacement chips are installed. After doing relevant tests, the replacement chips can be used normally.

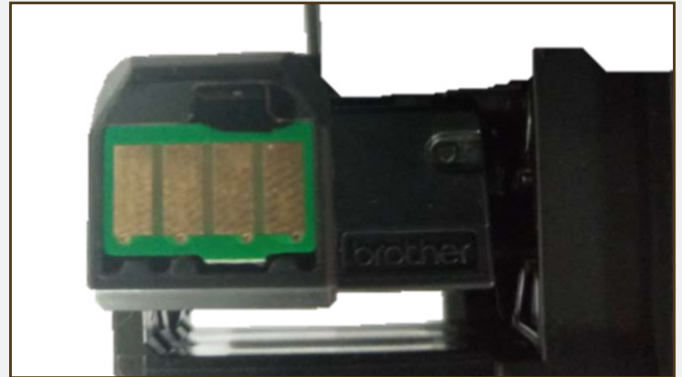


## STEP 1



Here is the OEM cartridge ready to be remanufactured.

## STEP 2



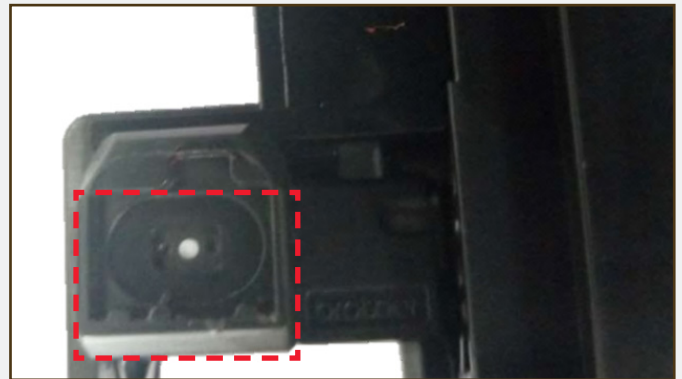
Locate the used OEM chip.

## STEP 3



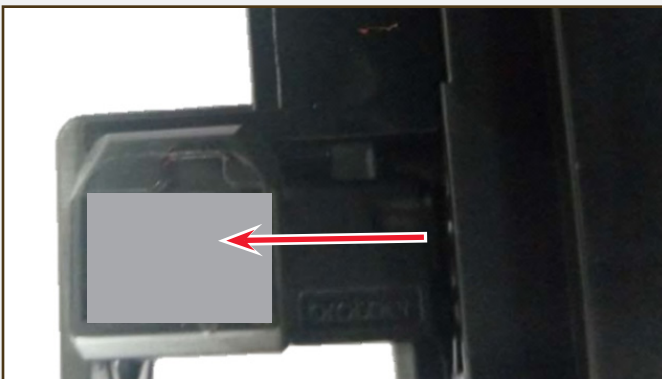
Heat the OEM chip with a heat gun and remove the chip using tweezers.

## STEP 4



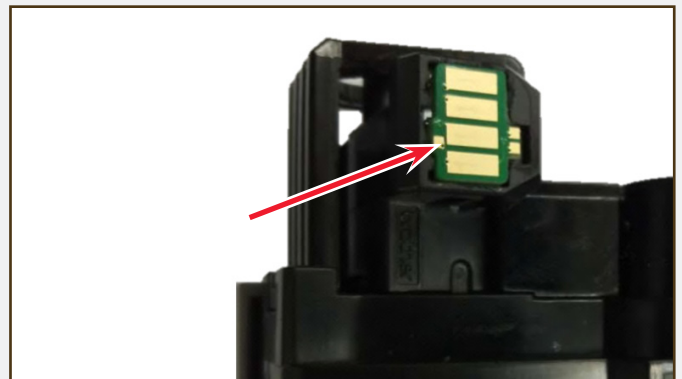
Deepen the red-marked cartridge part (9.7\*5.7mm) with a drilling machine or a milling machine by 2mm. Be careful not to exceed the red-marked area or cartridge damage can occur.

## STEP 5



Stick hot melt adhesive on the indicated area and install the replacement chip.

## STEP 6



Be sure the replacement chip is properly placed in the area that was deepened and is consistent with the OEM chip position.



# Static Control®

Static Control Components (USA - World Headquarters)  
3010 Lee Avenue 27332 | PO Box 152 Sanford, NC 27331  
US/Canada Tel: +1 800-488-2426 • Fax: +1 800-488-2452  
Int'l Tel: +1 919-774-3808 • Fax: +1 919-774-1287  
Email: [info@scc-inc.com](mailto:info@scc-inc.com)

Static Control Components (Europe) Limited  
Unit 30, Worton Grange  
Reading, Berkshire RG2 0TG, United Kingdom  
Tel: +44 (0) 118-923-8800 Fax: +44 (0) 118-923-8811  
Email: [info@scceurope.co.uk](mailto:info@scceurope.co.uk)