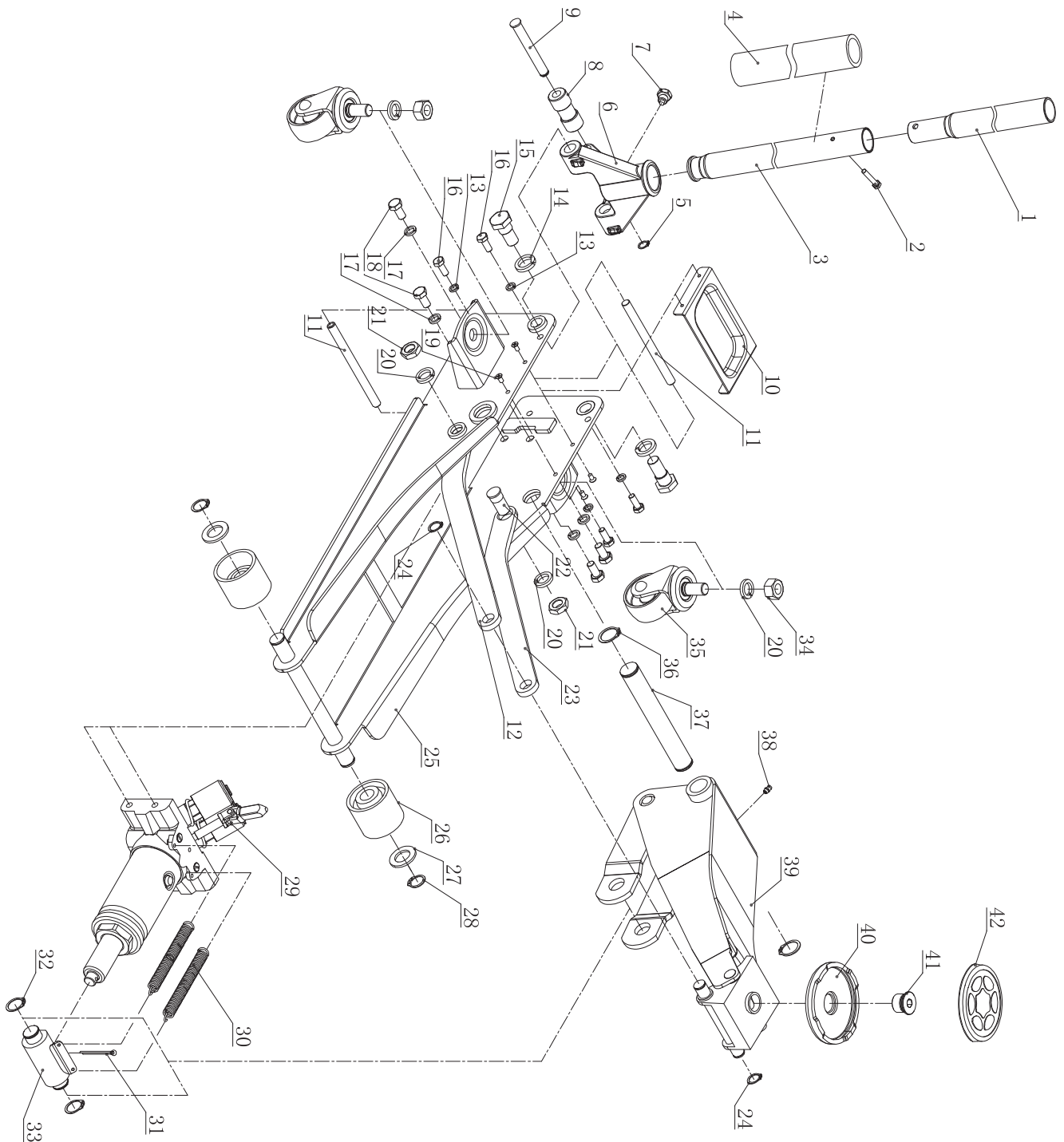


2 Ton 2XP Low Profile Jack

Cric rouleur à profil bas de 2 tonnes 2XP

Prod. No. / N° du prod.: 030404

Mod. No. / N° du mod.: 962DL



REF	PART NUMBER	DESCRIPTION	REQ	REF	PART NUMBER	DESCRIPTION	REQ
P1	PCN-962DL-P1	O-RING	1	P25	PCN-962DL-P25	PUMP CORE	1
P2	PCN-962DL-P2	NUT	1	P26	PCN-962DL-P26	RELEASE VALVE	1
P3	PCN-962DL-P3	WASHER	1	P27	PCN-962DL-P27	SPRING	1
P4	PCN-962DL-P4	RAM	1	P28	PCN-962DL-P28	SPRING PROTECTION	1
P5	PCN-962DL-P5	PLUG	1	P29	PCN-962DL-P29	O-RING	2
P6	PCN-962DL-P6	NYLON WASHER	1	P30	PCN-962DL-P30	PUMP CORE	1
P7	PCN-962DL-P7	PISTON ASS'Y	1	P31	PCN-962DL-P31	SPRING BASE	1
P8	PCN-962DL-P8	WASHER	1	P32	PCN-962DL-P32	RETAINER RING	1
P9	PCN-962DL-P9	O-RING	1	P33	PCN-962DL-P33	WASHER	1
P10	PCN-962DL-P10	RAM	1	P34	PCN-962DL-P34	PUMP CORE BASE	1
P11	PCN-962DL-P11	WAHER	1	P35	PCN-962DL-P35	SPRING	1
P12	PCN-962DL-P12	FIX PLATE	2	P36	PCN-962DL-P36	COVER	1
P13	PCN-962DL-P13	FILTER	2	P37	PCN-962DL-P37	U-BOLT	1
P14	PCN-962DL-P14	STEEL BALL	4	P38	PCN-962DL-P38	WASHER	1
P15	PCN-962DL-P15	STEEL BALL	1	P39	PCN-962DL-P39	PUMP CORE	1
P16	PCN-962DL-P16	STEEL BALL	1	P40	PCN-962DL-P40	SPRING BASE	1
P17	PCN-962DL-P17	STEEL BALL BASE	1	P41	PCN-962DL-P41	RETAINER RING	1
P18	PCN-962DL-P18	SPRING	1	P42	PCN-962DL-P42	SCREW	1
P19	PCN-962DL-P19	SPRING	1	P43	PCN-962DL-P43	O-RING	1
P20	PCN-962DL-P20	SCREW	1	P44	PCN-962DL-P44	PUMP ASS'Y	1
P24	PCN-962DL-P24	O-RING	1	P45	PCN-962DL-P45	SCREW	1
				P46	PCN-962DL-P46	STEEL BALL	1

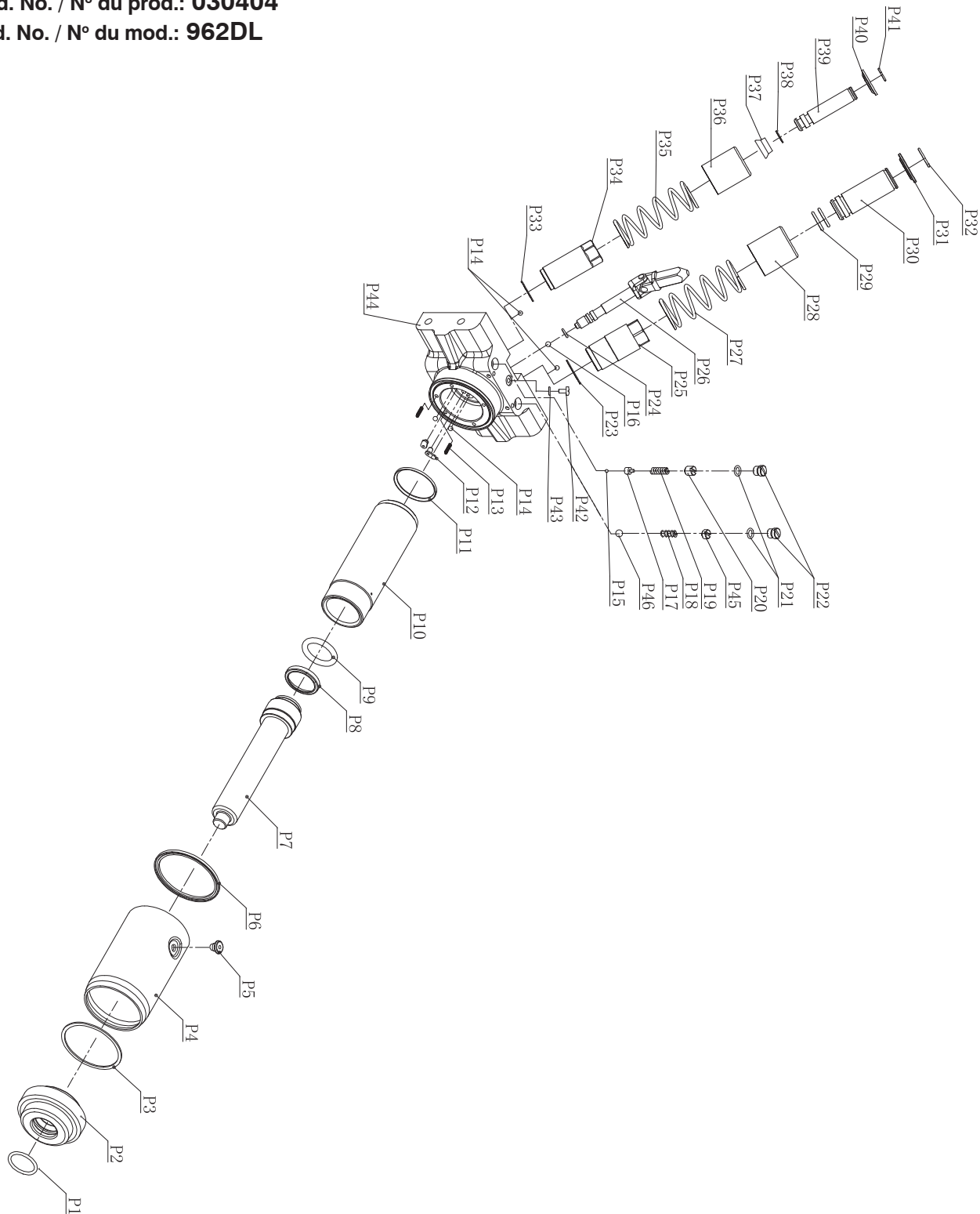
RÉF.	NUMÉRO DE PIÈCE	DESCRIPTION	NOMBRE REQUIS	RÉF.	NUMÉRO DE PIÈCE	DESCRIPTION	NOMBRE REQUIS
P1	PCN-962DL-P1	JOINT TORIQUE	1	P25	PCN-962DL-P25	INTÉRIEUR DE LA POMPE	1
P2	PCN-962DL-P2	ÉCROU	1	P26	PCN-962DL-P26	VALVE DE DÉTENTE	1
P3	PCN-962DL-P3	RONDELLE	1	P27	PCN-962DL-P27	RESSORT	1
P4	PCN-962DL-P4	VÉRIN	1	P28	PCN-962DL-P28	PROTECTION DU RESSORT	1
P5	PCN-962DL-P5	BOUCHON	1	P29	PCN-962DL-P29	JOINT TORIQUE	2
P6	PCN-962DL-P6	RONDELLE EN NYLON	1	P30	PCN-962DL-P30	INTÉRIEUR DE LA POMPE	1
P7	PCN-962DL-P7	ENSEMBLE DU PISTON	1	P31	PCN-962DL-P31	BASE DU RESSORT	1
P8	PCN-962DL-P8	RONDELLE	1	P32	PCN-962DL-P32	BAGUE DE RETENUE	1
P9	PCN-962DL-P9	JOINT TORIQUE	1	P33	PCN-962DL-P33	RONDELLE	1
P10	PCN-962DL-P10	VÉRIN	1	P34	PCN-962DL-P34	BASE INTÉRIEURE DE LA POMPE	1
P11	PCN-962DL-P11	RONDELLE	1	P35	PCN-962DL-P35	RESSORT	1
P12	PCN-962DL-P12	PLAQUE FIXE	2	P36	PCN-962DL-P36	COUVERCLE DE PROTECTION	1
P13	PCN-962DL-P13	FILTRE	2	P37	PCN-962DL-P37	BOULON EN U	1
P14	PCN-962DL-P14	BILLE EN ACIER	4	P38	PCN-962DL-P38	RONDELLE	1
P15	PCN-962DL-P15	BILLE EN ACIER	1	P39	PCN-962DL-P39	INTÉRIEUR DE LA POMPE	1
P16	PCN-962DL-P16	BILLE EN ACIER	1	P40	PCN-962DL-P40	BASE DU RESSORT	1
P17	PCN-962DL-P17	BASE DE LA BILLE D'ACIER	1	P41	PCN-962DL-P41	BAGUE DE RETENUE	1
P18	PCN-962DL-P18	RESSORT	1	P42	PCN-962DL-P42	VIS	1
P19	PCN-962DL-P19	RESSORT	1	P43	PCN-962DL-P43	JOINT TORIQUE	1
P20	PCN-962DL-P20	VIS	1	P44	PCN-962DL-P44	ENSEMBLE DE LA POMPE	1
P24	PCN-962DL-P24	JOINT TORIQUE	1	P45	PCN-962DL-P45	VIS	1
				P46	PCN-962DL-P46	BILLE EN ACIER	1

2 Ton 2XP Low Profile Jack

Cric rouleur à profil bas de 2 tonnes 2XP

Prod. No. / N° du prod.: 030404

Mod. No. / N° du mod.: 962DL



REF	PART NUMBER	DESCRIPTION	REQ	REF	PART NUMBER	DESCRIPTION	REQ
1	PCN-962DL-01	UPPER HANDLE	1	22	PCN-962DL-22	BOLT	2
2	PCN-962DL-02	SCREW	1	23	PCN-962DL-23	LEFT ADJUST PLATE	1
3	PCN-962DL-03	LOWER HANDLE	1	24	PCN-962DL-24	RETAINER RING	2
4	PCN-962DL-04	HANDLE SOCKET	1	25	PCN-962DL-25	FRAME	1
5	PCN-962DL-05	RETAIER RING	1	26	PCN-962DL-26	FRONT WHEEL	2
6	PCN-962DL-06	HANDLE BASE	1	27	PCN-962DL-27	WASHER	2
7	PCN-962DL-07	SCREW	1	28	PCN-962DL-28	RETAINER RING	2
8	PCN-962DL-08	ROLLER	1	29	PCN-962DL-29	PUMP	1
9	PCN-962DL-09	PIN	1	30	PCN-962DL-30	SPRING	2
10	PCN-962DL-10	PLATE	1	31	PCN-962DL-31	COTTER PIN	1
11	PCN-962DL-11	LIMITED ROD	2	32	PCN-962DL-32	RETAINER RING	2
12	PCN-962DL-12	RIGHT ADJUST PLATE	1	33	PCN-962DL-33	PISTON ADAPTOR	1
13	PCN-962DL-13	WASHER	4	34	PCN-962DL-34	NUT	2
14	PCN-962DL-14	WASHER	2	35	PCN-962DL-35	CASTOR	2
15	PCN-962DL-15	BOLT	2	36	PCN-962DL-36	RETAINER RING	2
16	PCN-962DL-16	BOLT	4	37	PCN-962DL-37	LIFTING PIN	1
17	PCN-962DL-17	WASHER	4	38	PCN-962DL-38	OIL CUP	1
18	PCN-962DL-18	BOLT	4	39	PCN-962DL-39	FRAME	1
19	PCN-962DL-19	BOLT	4	40	PCN-962DL-40	ADAPTOR	1
20	PCN-962DL-20	WASHER	4	41	PCN-962DL-41	SCREW	1
21	PCN-962DL-21	NUT	2	42	PCN-962DL-42	RUBBER PAD	1

RÉF.	NUMÉRO DE PIÈCE	DESCRIPTION	NOMBRE REQUIS	RÉF.	NUMÉRO DE PIÈCE	DESCRIPTION	NOMBRE REQUIS
1	PCN-962DL-01	POIGNÉE SUPÉRIEURE	1	22	PCN-962DL-22	BOULON	2
2	PCN-962DL-02	VIS	1	23	PCN-962DL-23	PLAQUE DE RÉGLAGE GAUCHE	1
3	PCN-962DL-03	POIGNÉE INFÉRIEURE	1	24	PCN-962DL-24	BAGUE DE RETENUE	2
4	PCN-962DL-04	DOUILLE DE LA POIGNÉE	1	25	PCN-962DL-25	ARMATURE	1
5	PCN-962DL-05	BAGUE DE RETENUE	1	26	PCN-962DL-26	ROUE AVANT	2
6	PCN-962DL-06	BASE DE LA POIGNÉE	1	27	PCN-962DL-27	RONDELLE	2
7	PCN-962DL-07	VIS	1	28	PCN-962DL-28	BAGUE DE RETENUE	2
8	PCN-962DL-08	ROULETTE	1	29	PCN-962DL-29	POMPE	1
9	PCN-962DL-09	GOUPILLE	1	30	PCN-962DL-30	RESSORT	2
10	PCN-962DL-10	PLAQUE	1	31	PCN-962DL-31	CLAVETTE	1
11	PCN-962DL-11	TIGE DE RESTREINTE	2	32	PCN-962DL-32	BAGUE DE RETENUE	2
12	PCN-962DL-12	PLAQUE DE RÉGLAGE DROITE	1	33	PCN-962DL-33	ADAPTEUR DU PISTON	1
13	PCN-962DL-13	RONDELLE	4	34	PCN-962DL-34	ÉCROU	2
14	PCN-962DL-14	RONDELLE	2	35	PCN-962DL-35	ROULETTE	2
15	PCN-962DL-15	BOULON	2	36	PCN-962DL-36	BAGUE DE RETENUE	2
16	PCN-962DL-16	BOULON	4	37	PCN-962DL-37	AXE DE LEVAGE	1
17	PCN-962DL-17	RONDELLE	4	38	PCN-962DL-38	RÉSERVOIR À HUILE	1
18	PCN-962DL-18	BOULON	4	39	PCN-962DL-39	BÂTI	1
19	PCN-962DL-19	BOULON	4	40	PCN-962DL-40	ADAPTATEUR	1
20	PCN-962DL-20	RONDELLE	4	41	PCN-962DL-41	VIS	1
21	PCN-962DL-21	ÉCROU	2	42	PCN-962DL-42	TAMPON EN CAOUTCHOUC	1