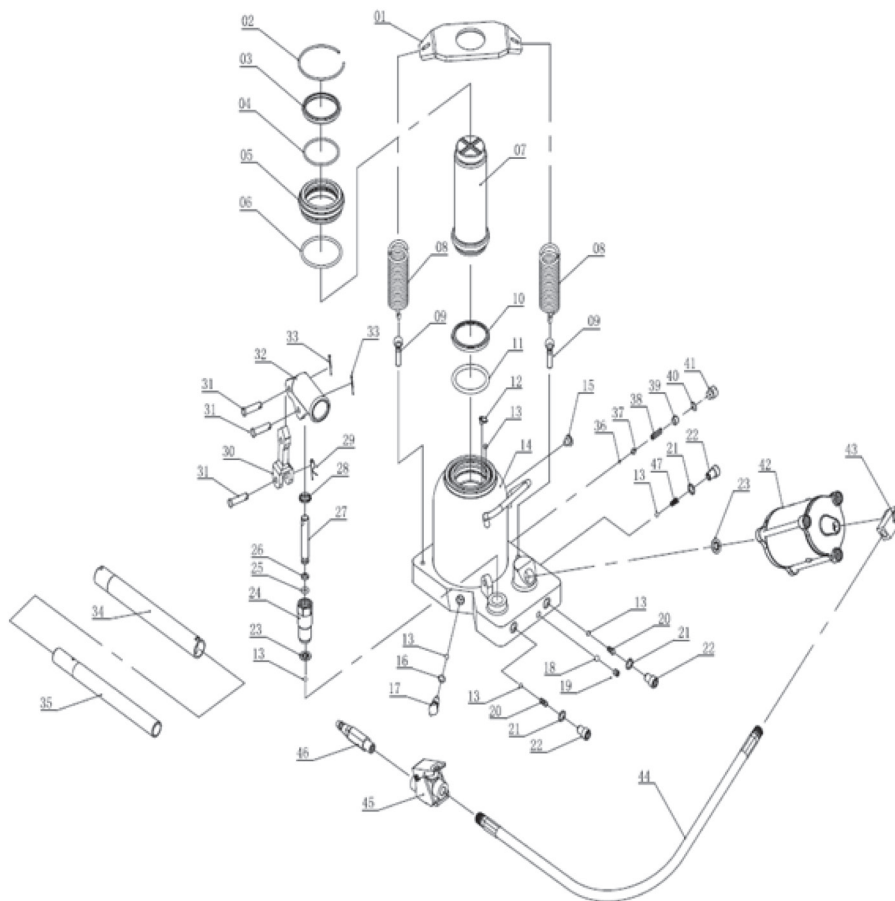


## 20 Ton Low Profile Air / Hydraulic Bottle Jack – Super Heavy Duty

PROD. NO. 030160  
MOD. NO. 391SHD



NO.	PART NUMBER	DESCRIPTION	REQ
01	PCN-390SHD-01	Spring plate	1
02	PCN-391SHD-02	Circlip	1
03	PCN-391SHD-03	Dust ring	1
04	PCN-391SHD-04	O-ring	1
05	PCN-391SHD-05	Retaining ring	1
06	PCN-391SHD-06	O-ring	1
07	PCN-391SHD-07	Piston	1
08	PCN-391SHD-08	Spring	2
09	PCN-391SHD-09	Bolt	2
10	PCN-391SHD-10	Cup seal	1
11	PCN-391SHD-11	O-ring	1
12	PCN-391SHD-12	Ball cup	1
13	PCN-391SHD-13	Ball	6
14	PCN-391SHD-14	Reservoir	1
15	PCN-391SHD-15	Filler plug	1
16	PCN-391SHD-16	O-ring	1
17	PCN-391SHD-17	Release valve	1
18	PCN-391SHD-18	Ball	1
19	PCN-391SHD-19	Screw	1
20	PCN-391SHD-20	Spring	2
21	PCN-391SHD-21	Copper Ring	2
22	PCN-391SHD-22	Screw	2
23	PCN-391SHD-23	Copper Ring	2
24	PCN-391SHD-24	Pump Core Base	1
25	PCN-391SHD-25	O-ring	1
26	PCN-391SHD-26	F4 ring	1
27	PCN-391SHD-27	Pump Core	1
28	PCN-391SHD-28	J-Dust ring	1
29	PCN-391SHD-29	R-pin	1
30	PCN-391SHD-30	Handle bracket	1
31	PCN-391SHD-31	Pin	3
32	PCN-391SHD-32	Hand press	1
33	PCN-391SHD-33	Pin	2
34	PCN-390SHD-34	Handle 1	1
35	PCN-390SHD-35	Handle 2	1
36	PCN-391SHD-36	Ball	1
37	PCN-391SHD-37	Adjust ball seat	1
38	PCN-391SHD-38	Spring	1
39	PCN-391SHD-39	Screw	1
40	PCN-391SHD-40	O-ring	1
41	PCN-391SHD-41	Screw	1
42	PCN-390SHD-42	Air motor	1
43	PCN-390SHD-43	Connecting Fitting	1
44	PCN-390SHD-44	Air hose	1
45	PCN-390SHD-45	Valve body	1
46	PCN-390SHD-46	Quick coupler-male	1

### PCN-391SHD-PRK

#### HYDRAULIC REPAIR KIT, CONTENTS

REPAIR KIT(ONE PC FOR #2, #3, #4, #5, #6, #10, #11, #12, #16, #18, #25, #26, #28, #36, #37, #38, #39, #40, #47, 2PCS FOR #20, #23, 3PCS FOR #21, 6PCS FOR #13)