

Operation MANUAL

Air/Water Hose Reel

Prod. No. **028283**
Mod. No. **IAR-3850**

WARNING

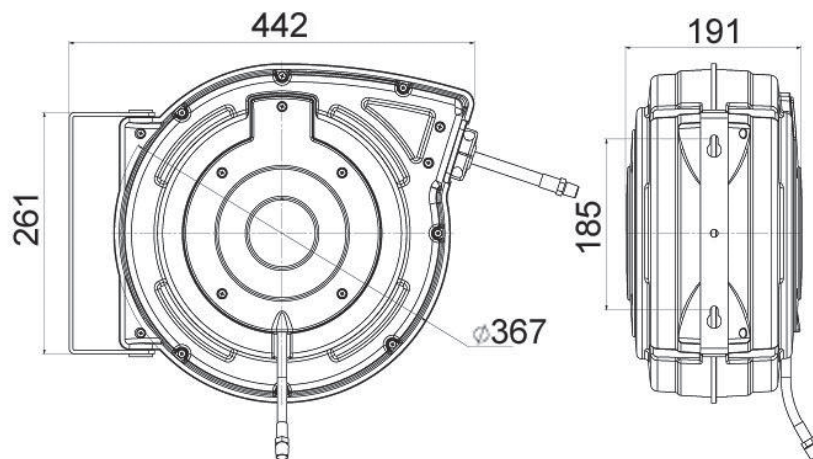
Read carefully and understand all INSTRUCTIONS before operating. Failure to follow the safety rules and other basic safety precautions may result in serious personal injury.

Save these instructions in a safe place and on hand so that they can be read when required. Keep these instructions to assist in future servicing.



TECHNICAL DETAILS

ITEM	MAX PRESSURE	HOSE WORKING TEMPERATURE (°C/°F)	HOSE CAPACITY		
			MATERIAL	I.D. (inch/mm)	LENGTH (m/ft)
028283	300Psi (20Bar)	-10 – 60°C (14 – 140°F)	Hybrid Polymer	3/8"/10	15/50



SAFETY PRECAUTIONS

GENERAL SAFETY RULES

WARNING: Read and understand all instructions.

WARNING: The warnings, cautions, and instructions discussed in this instruction manual cannot cover all possible conditions or situations that could occur. It must be understood by the operator that common sense and caution are factors which cannot be built into this product but must be supplied by the operator.

HOSE REEL SAFETY PRECAUTIONS

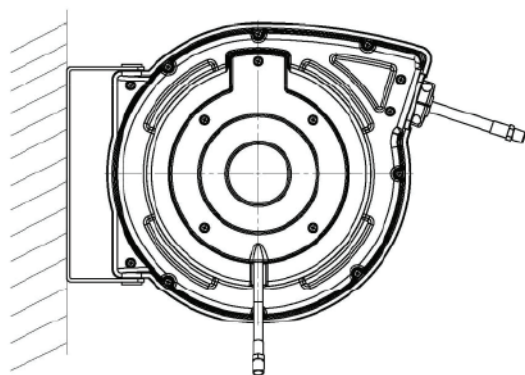
1. Use proper eye protection when assembling and using the hose reel.
2. Keep children away from the work area.
3. Personal injury and/or equipment damage may result if proper safety precautions are not observed.
4. Ensure that reel is properly installed before connecting input and output hoses.
5. Bleed fluid/gas pressure from system before servicing reel.
6. Before connecting reel to supply line ensure that pressure does not exceed maximum working pressure rating of reel.
7. Remember, even low pressure is very dangerous and can cause personal injury or death.
8. If a leak occurs in the hose or reel, remove system pressure immediately.
9. Ensure that reel, hose, and equipment being service are properly grounded.
10. If reel ceases to unwind or rewind, remove system pressure immediately.
11. Do not pull or jerk on hose.

WARNING:

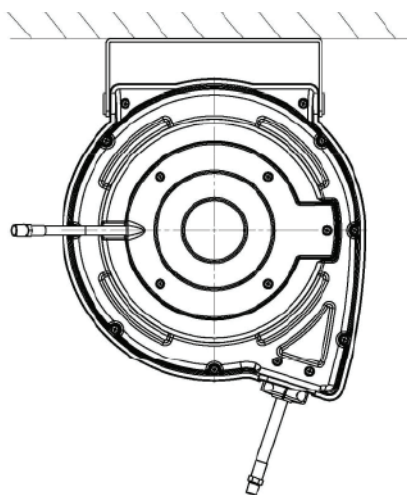
Exposure of skin directly to pressurized air or fluids could result in severe bodily injury.

INSTALLATION

1. Prior to mounting the hose reel, ensure that the supply line pressure does not exceed the maximum working pressure of the hose reel.
2. Unpack and inspect reel for damage. Turn by hand to check for smooth operation. Check for completeness.
3. For overhead ceiling mounting: Install reel at most 10 ft/3 m above the floor.
4. You will need to purchase appropriate hardware for mounting your new reel.
 - i) The reel base has three 8.5 mm drilled holes for mounting on a suitable flat surface.
 - ii) Using the three holes in the base, mount the reel in the desired location. Be sure to use appropriate hardware and tighten securely.

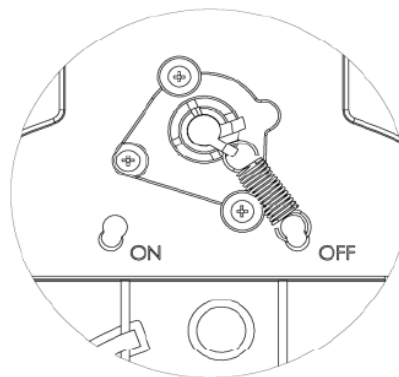
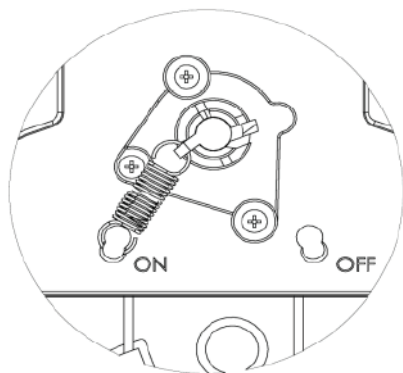


Wall



Ceiling

5. Apply Teflon tape or pipe sealant to supply line threads, attach to reel inlet and tighten. The other end of incoming line can now be connected to desired supply source.
6. Apply Teflon tape or pipe sealant to outlet fitting on reel hose, then attach to desired tool or nozzle. Check connection for leakage, also check hose reel for correct operation. See: Operation section.
7. If hose stopper adjustment is required, pull hose from reel and allow to latch at desired length. Loosen stopper bolts and slide stopper to a position close to the hose guide. Tighten stopper bolts and unlatch the reel.
8. Double adjustment function: see the picture below. Adjusting the latch spring to left position can lock the hose at any desired length. Adjust the latch spring to opposite position for a non-lock function, then hose can be freely moved.

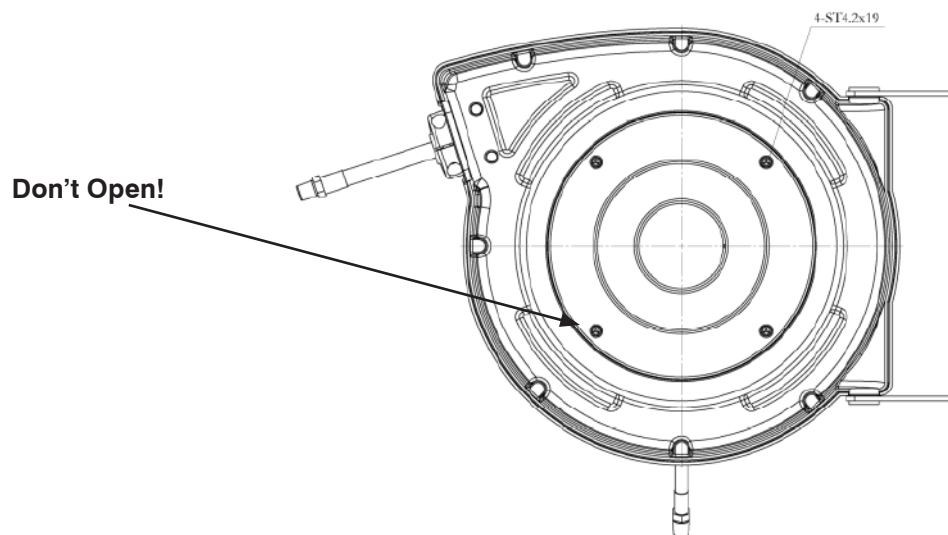


OPERATION

1. Check reel for correct operation by slowly pulling out hose. A clicking noise will be heard every half revolution of the drum.
2. To latch the reel, pull out the hose and allow it to retract after hearing the first, second, or third click.
3. To unlatch, slowly pull out the hose until the clicking noise stops, then let hose retract until the hose stopper rests against the hose guide.
4. If necessary, adjust spring tension on reel by adding or removing wraps of hose from spool, one wrap at a time, until desired tension is obtained. Add wraps to increase tension. Remove wraps to decrease tension.

WARNING:

Do not open the cover (#10) at will. It is very dangerous and can cause personal injury or death. See picture below.



MAINTENANCE

1. Make sure the hose is in proper working order.
2. Clean the hose with a cloth dipped in warm water to remove dirt or deposits and ensure correct rewinding.
3. Do not use detergents or solvents which could prove incompatible with cable-winder materials.
4. Dismantling of the unit by unskilled personal could prove hazardous; the risks involved mainly concern the preloaded springs.

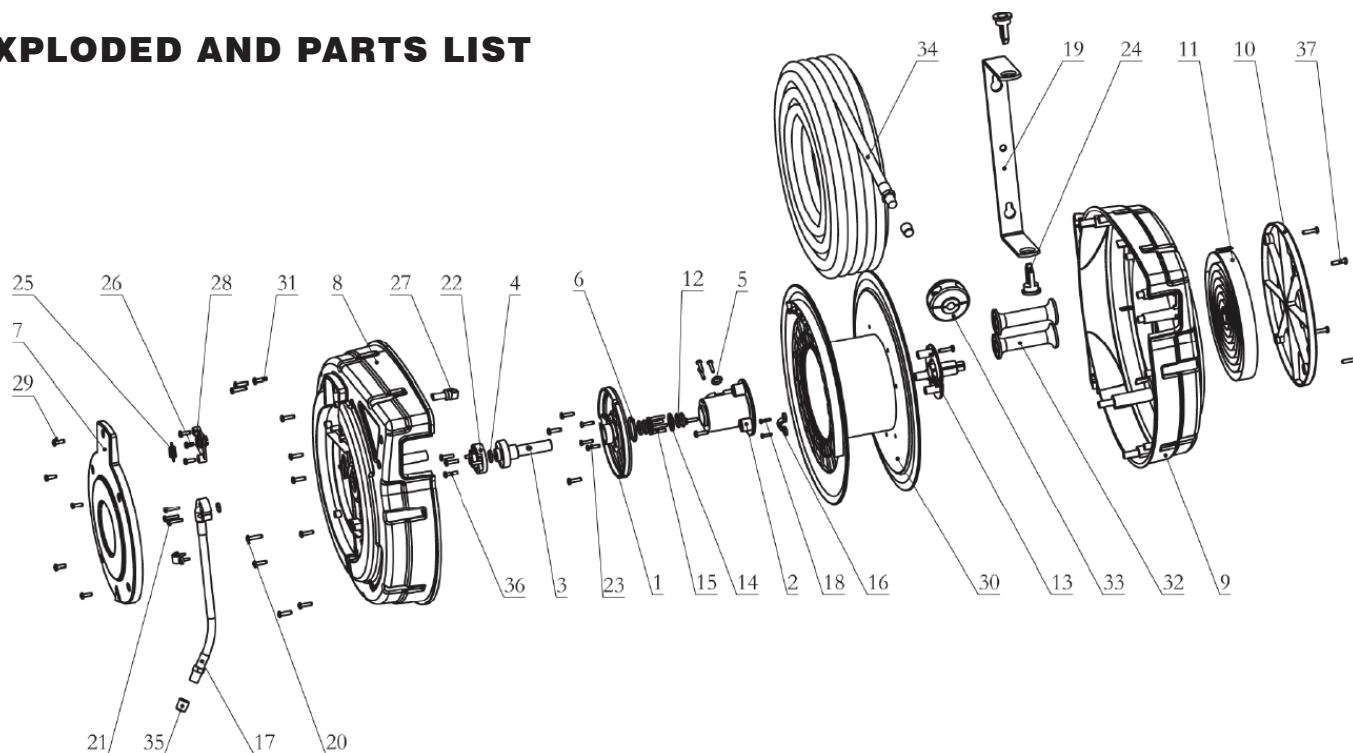
LIMITED WARRANTY

1. The manufacturer warrants this hose reel against defects in material and craftsmanship, for a period of 24 months from date of purchase, but not including hose and O-ring parts.
2. Manufacturer's liability is limited to replacement or repair of defective material within the warranty period, when returned freight prepaid to the distributor or their designated service depot.
3. The warranty does not cover damage caused by accident, misuse, or faulty installation.
4. The reel must be installed and maintained in compliance with the instructions.

WARNING

Your risk from these exposures varies, depending on how often you do this type of work. To reduce your exposure to these chemicals: work in a well-ventilated area, and work with approved safety equipment, such as those dust masks that are specially designed to filter out microscopic particles.

EXPLODED AND PARTS LIST



REF NO.	DESCRIPTION	QTY.	REF NO.	DESCRIPTION	QTY.
1	Bushing	1	20	Screw	3
2	Swivel Body	1	21	Screw	3
3	Swivel Spool	1	22	Connector	1
4	O-ring	1	23	Screw	6
5	O-ring	2	24	Pin	2
6	O-ring	1	25	Ratchet Spring	1
7	Small Left Cover	1	26	Screw	1
8	Left Cover	1	27	Ratchet Paw	1
9	Right Cover	1	28	Ratchet Base	1
10	Small Right Cover	1	29	Screw	7
11	Main Spring	1	30	Drum	1
12	O-ring	4	31	Screw	14
13	Axle	1	32	Roller	2
14	Retainer	1	33	Stopper Assembly	1
15	Retainer Base	1	34	Hose Assembly	1
16	Clamp	2	35	Protector Cap	2
17	Lead-in Hose Assembly	1	36	Screw	3
18	Screw	4	37	Screw	4
19	Bracket	1			