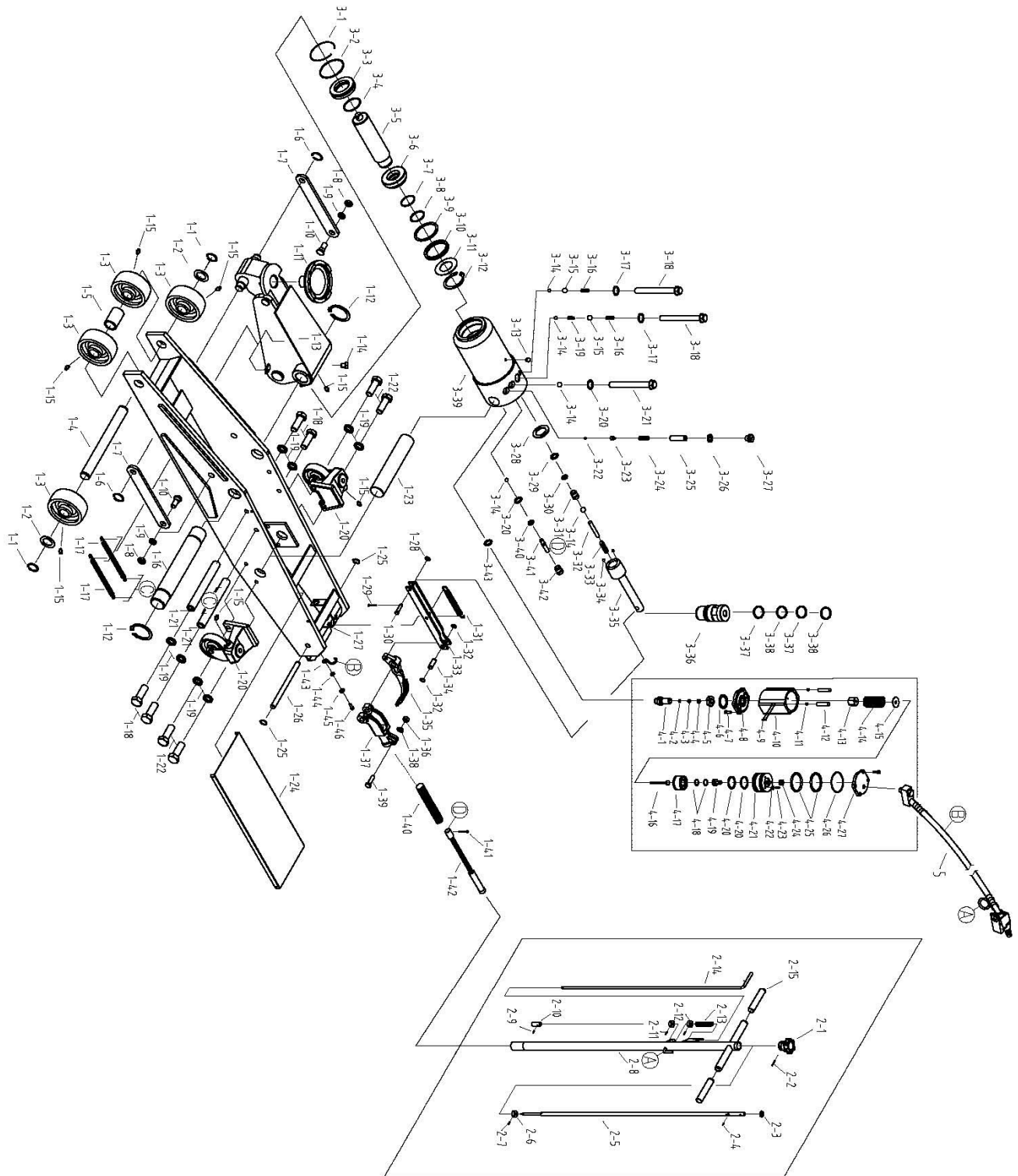


980SD 20T Air/Hyd Long Chassis Service Jack PROD NO. 030439



980SD 20T Air/Hyd Long Chassis Service Jack PROD NO. 030439

REF	PART NUMBER	DESCRIPTION	REQ	REF	PART NUMBER	DESCRIPTION	REQ	REF	PART NUMBER	DESCRIPTION	REQ
1-1	PTL-980P1-1	SNAP RING	2	2-1	PTL-980P2-1	KNOB	1	3-32	PTL-980P3-32	RUBBER SEAL	1
1-2	PTL-980P1-2	WASHER	2	2-2	PTL-980P2-2	PIN	1	3-33	PTL-980P3-33	SPRING	1
1-3	PTL-980P1-3	FRONT WHEEL	4	2-3	PTL-980P2-3	WASHER	1	3-34	PTL-980P3-34	STEEL BALL	2
1-4	PTL-980P1-4	FRONT WHEEL AXLE	1	2-4	PTL-980P2-4	PIN	1	3-35	PTL-980P3-35	PUMP PISTON	1
1-5	PTL-980P1-5	BUSH	1	2-5	PTL-980P2-5	ROD	1	3-36	PTL-980P3-36	PISTON HOUSE	1
1-6	PTL-980P1-6	SNAP RING	2	2-6	PTL-980P2-6	WASHER	1	3-37	PTL-980P3-37	X O-RING	2
1-7	PTL-980P1-7	LINK RING	2	2-7	PTL-980P2-7	PIN	1	3-38	PTL-980P3-38	X SNAP RING	2
1-8	PTL-980P1-8	NUT	2	2-8	PTL-980P2-8	HANDLE TUBE	1	3-39	PTL-980P3-39	PUMP CYLINDER	1
1-9	PTL-980P1-9	WASHER	2	2-9	PTL-980P2-9	PIN	1	3-40	PTL-980P3-40	X O-RING	1
1-10	PTL-980P1-10	BOLT	2	2-10	PTL-980P2-10	PIN	1	3-41	PTL-980P3-41	RELEASE ROD	1
1-11	PTL-980P1-11	SADDLE	1	2-11	PTL-980P2-11	BOLT	2	3-42	PTL-980P3-42	FIX RING	1
1-12	PTL-980P1-12	SNAP RING	2	2-12	PTL-980P2-12	WASHER	2	3-43	PTL-980P3-43	COPPER WASHER	1
1-13	PTL-980P1-13	LIFT ARM	1	2-13	PTL-980P2-13	SPRING	1	4-1	PTL-980P4-1	PUMP CYLINDER	1
1-14	PTL-980P1-14	BOLT	1	2-14	PTL-980P2-14	CONTROL ROD	1	4-2	PTL-980P4-2	X SEAL	1
1-15	PTL-980P1-15	GREASE FITTING	7	2-15	PTL-980P2-15	SLEEVE	2	4-3	PTL-980P4-3	X NYLON GASKET	1
1-16	PTL-980P1-16	PIN	1	3-1	PTL-980P3-1	SNAP RING	1	4-4	PTL-980P4-4	COPPER RING	1
1-17	PTL-980P1-17	SPRING	2	3-2	PTL-980P3-2	X O-RING	1	4-5	PTL-980P4-5	NUT	1
1-18	PTL-980P1-18	BOLT	4	3-3	PTL-980P3-3	RING	1	4-6	PTL-980P4-6	SPRING	1
1-19	PTL-980P1-19	WAHSER	8	3-4	PTL-980P3-4	X O-RING	1	4-7	PTL-980P4-7	BOLT	8
1-20	PTL-980P1-20	REAR WHEEL ASSEMBLY	2	3-5	PTL-980P3-5	PISTON	1	4-8	PTL-980P4-8	FRONT COVER	1
1-21	PTL-980P1-21	BUSH	2	3-6	PTL-980P3-6	PISTON RING	1	4-9	PTL-980P4-9	STEEL BALL	4
1-22	PTL-980P1-22	BOLT	4	3-7	PTL-980P3-7	X GASKET	1	4-10	PTL-980P4-10	AIR PUMP HOUSING	1
1-23	PTL-980P1-23	PIN	1	3-8	PTL-980P3-8	X O-RING	1	4-11	PTL-980P4-11	STEEL BALL	2
1-24	PTL-980P1-24	COVER	1	3-9	PTL-980P3-9	X PISTON WASHER	1	4-12	PTL-980P4-12	PIN	2
1-25	PTL-980P1-25	SNAP RING	2	3-10	PTL-980P3-10	X SEAL	1	4-13	PTL-980P4-13	NUT	1
1-26	PTL-980P1-26	PIN	1	3-11	PTL-980P3-11	PISTON WASHER	1	4-14	PTL-980P4-14	SPRING	1
1-27	PTL-980P1-27	FRAME	1	3-12	PTL-980P3-12	SNAP RING	1	4-15	PTL-980P4-15	WASHER	1
1-28	PTL-980P1-28	WASHER	1	3-13	PTL-980P3-13	PLUG	1	4-16	PTL-980P4-16	CYLINDER PUMP PLUNGER	1
1-29	PTL-980P1-29	PIN	1	3-14	PTL-980P3-14	STEEL BALL	5	4-17	PTL-980P4-17	PISTON	1
1-30	PTL-980P1-30	PIN	1	3-15	PTL-980P3-15	STEEL BALL	2	4-18	PTL-980P4-18	X O-RING	2
1-31	PTL-980P1-31	SPRING	1	3-16	PTL-980P3-16	SPRING	2	4-19	PTL-980P4-19	AIR RELEASE ROD	1
1-32	PTL-980P1-32	WASHER	2	3-17	PTL-980P3-17	COPPER WASHER	2	4-20	PTL-980P4-20	O-RING	2
1-33	PTL-980P1-33	LINK ASSEMBLY	1	3-18	PTL-980P3-18	BOLT	2	4-21	PTL-980P4-21	PISTON	1
1-34	PTL-980P1-34	PIN	1	3-19	PTL-980P3-19	SPRING	1	4-22	PTL-980P4-22	O-RING	3
1-35	PTL-980P1-35	PEDAL	1	3-20	PTL-980P3-20	COPPER WASHER	2	4-23	PTL-980P4-23	BOLT	3
1-36	PTL-980P1-36	NUT	1	3-21	PTL-980P3-21	BOLT	1	4-24	PTL-980P4-24	X AIR SEAL	1
1-37	PTL-980P1-37	HANDLE SOCKET	1	3-22	PTL-980P3-22	STEEL BALL	1	4-25	PTL-980P4-25	X O-RING	2
1-38	PTL-980P1-38	WASHER	1	3-23	PTL-980P3-23	BALL SEAT	1	4-26	PTL-980P4-26	O-RING	1
1-39	PTL-980P1-39	BOLT	1	3-24	PTL-980P3-24	SPRING	1	4-27	PTL-980P4-27	REAR COVER	1
1-40	PTL-980P1-40	SPRING	1	3-25	PTL-980P3-25	BOLT	1	5	PTL-980P5	AIR HOSE ASSEMBLY	1
1-41	PTL-980P1-41	BOLT	1	3-26	PTL-980P3-26	SEAL	1	NS	PTL-980PPU	POWER UNIT	1
1-42	PTL-980P1-42	RELEASE ASSEMBLY	1	3-27	PTL-980P3-27	BOLT	1	NS	PTL-980P-AM	AIR MOTOR ASSY	1
1-43	PTL-980P1-43	FIX RING	1	3-28	PTL-980P3-28	COPPER WASHER	1	NS	PTL-980P-HA	HANDLE ASSY	1
1-44	PTL-980P1-44	WASHER	1	3-29	PTL-980P3-29	X O-RING	1	NS	PTL-980P-HRK	HYD REPAIR KIT MARKED W X	1
1-45	PTL-980P1-45	WASHER	1	3-30	PTL-980P3-30	O-RING	1				
1-46	PTL-980P1-46	BOLT	1	3-31	PTL-980P3-31	BOLT	1				