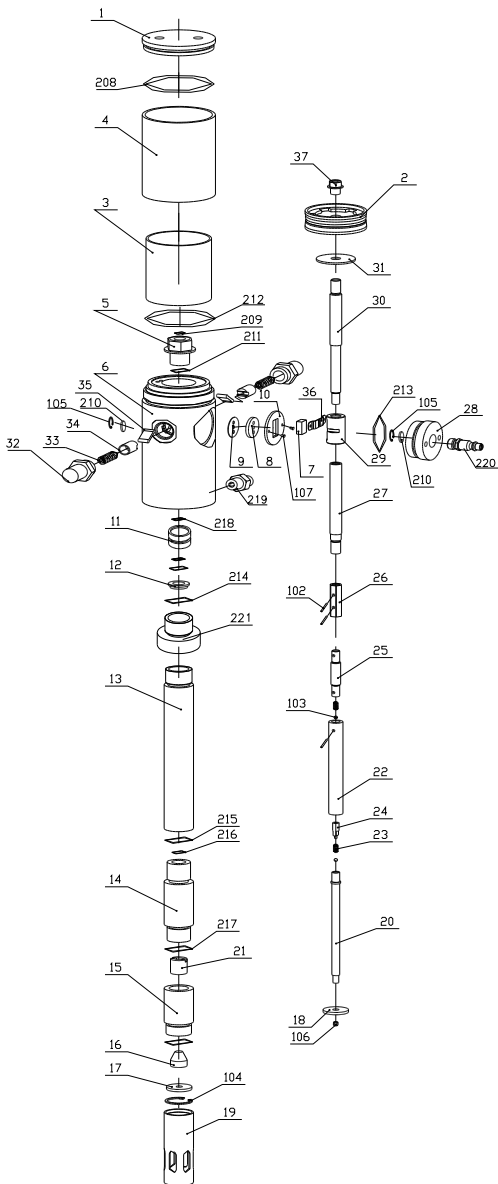


Compression Ratio	50:1
Air Operating Pressure (bar - PSI)	5-8 / 70-115
Maximum Air Inlet Pressure (bar - PSI)	8 / 115
Air Consumption (cfm)	4.3 cfm @ 115 PSI
Capacity (l/min - gallon/min)	18 / 5
Tube Diameter (mm - inch)	30 / 1.18
Suction Tube Length (mm - inch)	740 / 29
Suitable for Drum Size (kgs - lbs)	50-60 / 110-132
Air Inlet Connection	1/4"
Oil Delivery Connection	1/4"
Noise Level (dB)	82



50:1 Air Operated Grease Pump

No.	Description	No.	Description
1	Air Motor Cover	31	Washer
2	Piston	32	Spring Shell
3	Air Motor Shell (inside)	33	Spring
4	Air Motor Shell (outside)	34	Spring Seat
5	Bracket	35	Trip Shoe Guide
6	Air Control Center	36	Slider Bracket
7	Slider	37	Nut
8	Gasket	102	Pin
9	Soft Gasket	103	Ball
10	Securing Washer	104	Circlip
11	Bracket	105	Small Circlip
12	Washer	106	Nut
13	Connecting Tube	107	Screw
14	Piston Shell	208	O-Ring
15	Valve Seat	209	O-Ring
16	Taper Washer	210	Silencer
17	Filter	211	O-Ring
18	Shovel Washer	212	O-Ring
19	Suction Tube	213	O-Ring
20	Shovel Rod	214	O-Ring
21	Valve	215	O-Ring
22	Piston	216	O-Ring
23	Spring	217	O-Ring
24	Spring Seat	218	O-Ring
25	Connecting Shaft	219	Outlet
26	Connecting Shell	220	Air Fitting
27	Middle Shaft	PRK	Repair Kit
28	Air Centre Cover	P07K	(7, 8, 9, 10, 36)
29	Slider Shell	P17K	(1 x 17, 18, 104, 106)
30	Piston Shaft	P32K	(2 x 32, 33, 34, 35)

When ordering parts, specify model number and part required

